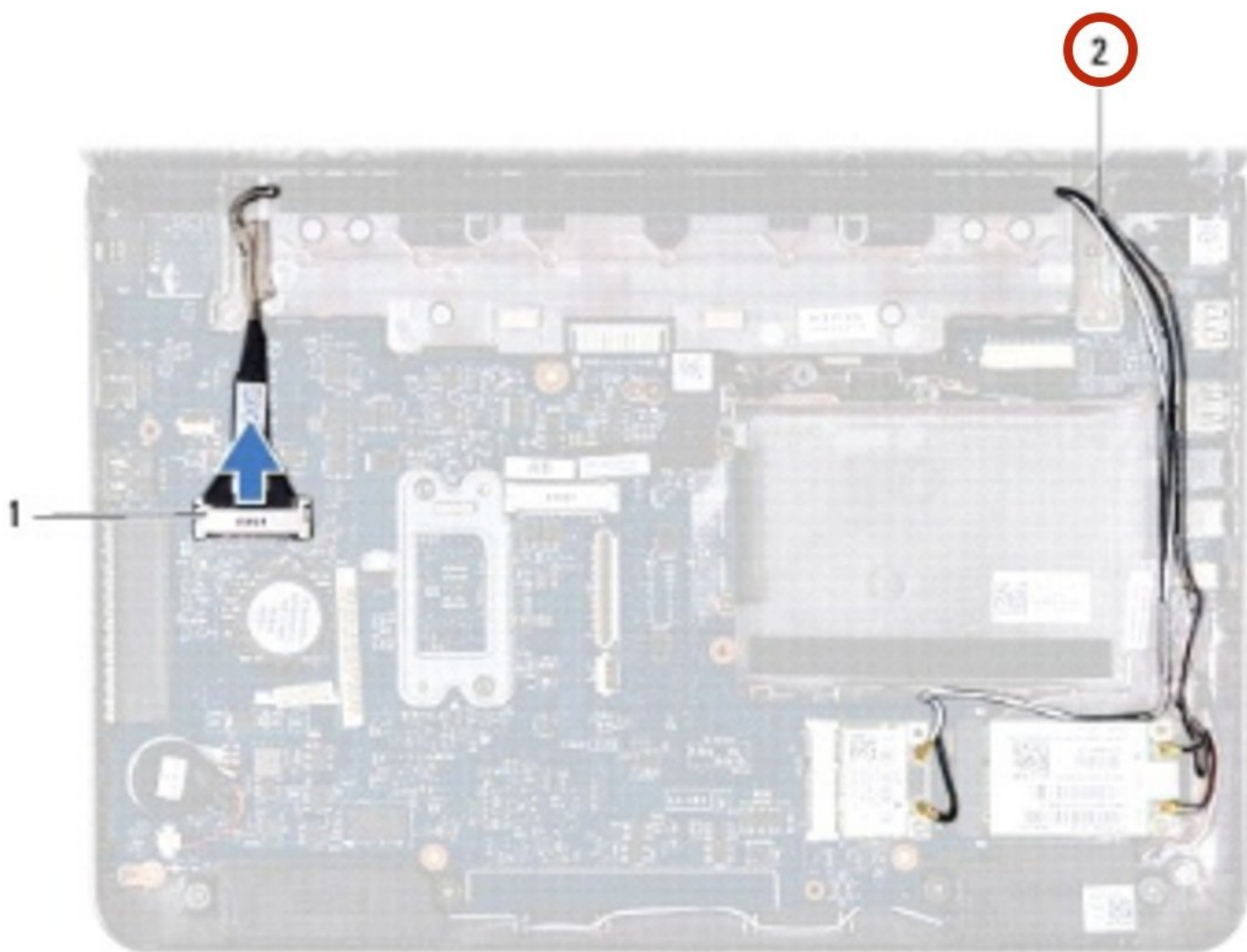




# Dell Inspiron 10z 1120 Display Assembly Replacement

Written By: Terrence15



---

## INTRODUCTION

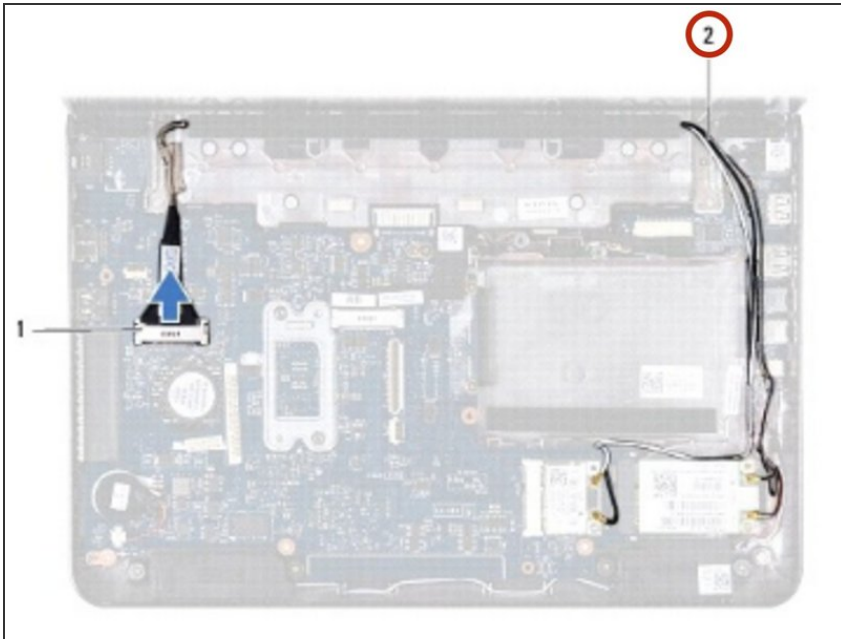
In this guide, we will show you how to remove and replace the Display Assembly.



### TOOLS:

- [Phillips #0 Screwdriver](#) (1)
-

## Step 1 — Disconnecting the Antenna Cables

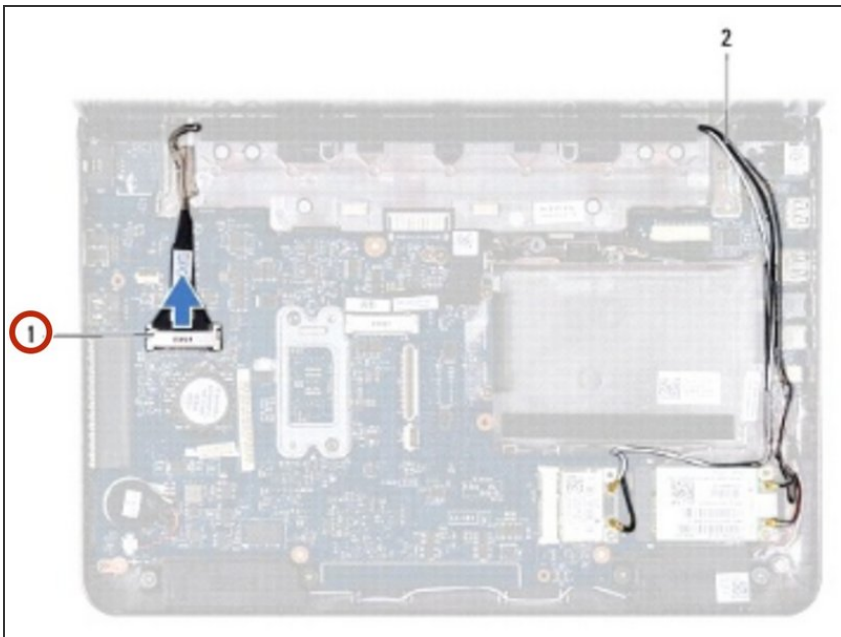


**⚠ WARNING:** Before working inside your computer, read the safety information that shipped with your computer. Follow the instructions in [Before You Begin](#).

**⚠ CAUTION:** To avoid electrostatic discharge, ground yourself by using a wrist grounding strap or by periodically touching an unpainted metal surface (such as a connector on your computer).

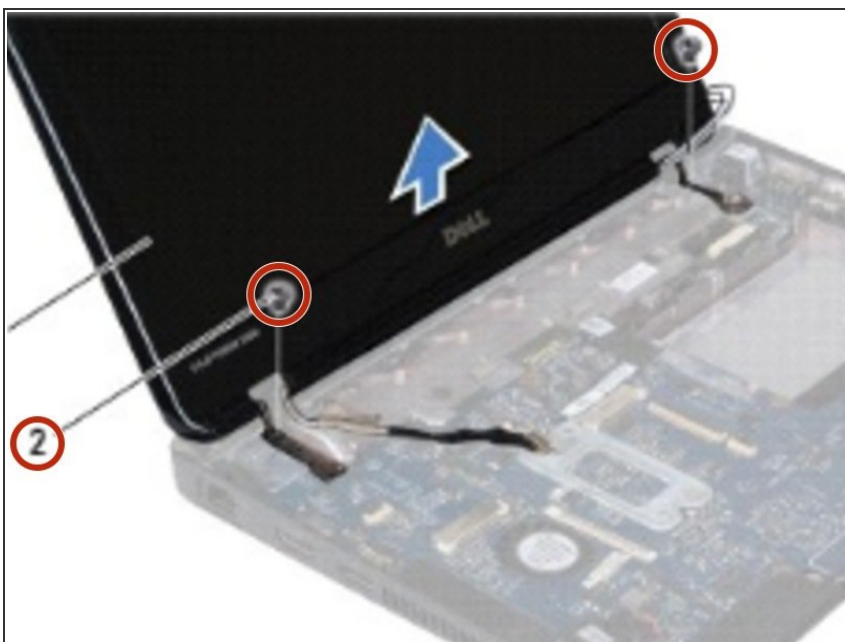
- Disconnect the Mini-Card antenna cables from the Mini-Card(s).

## Step 2 — Dislodge the Antenna Cables



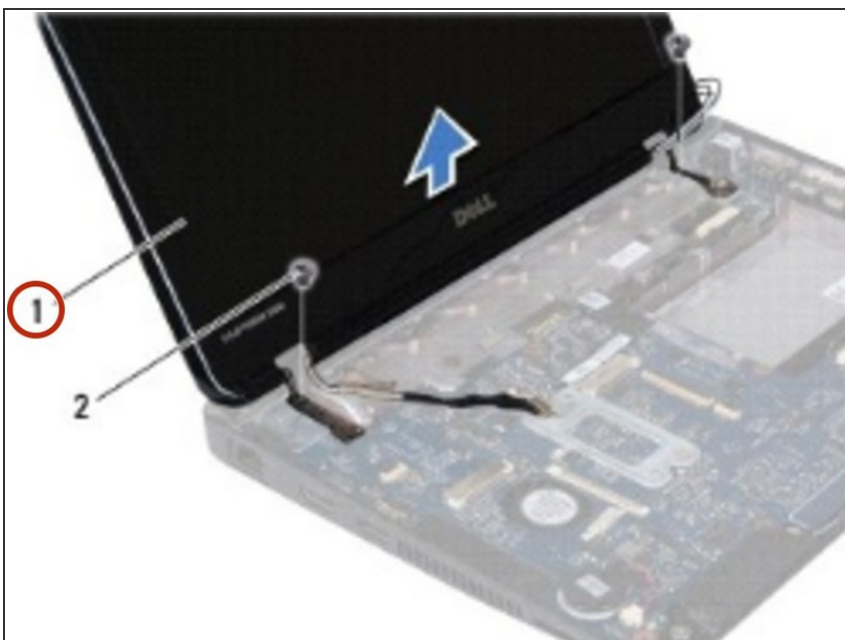
- Make note of the cable routing and carefully dislodge the Mini-Card antenna cables from the routing guides.

### Step 3 — Remove the Screws



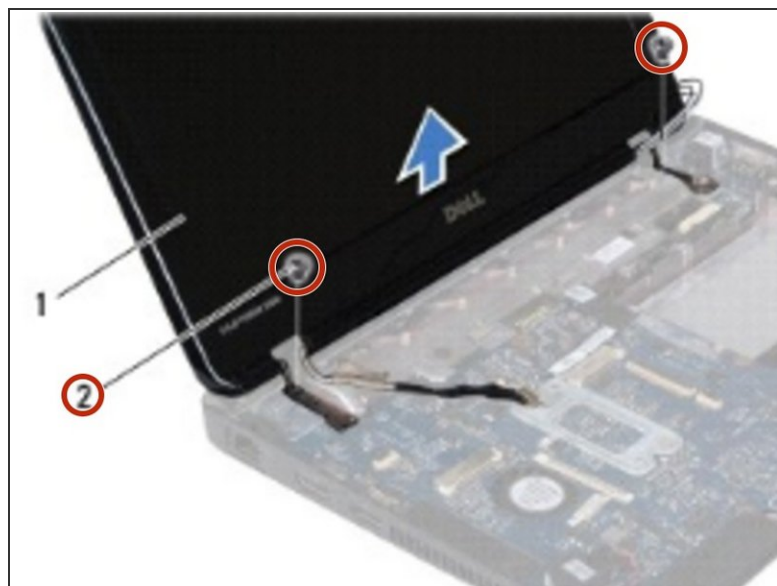
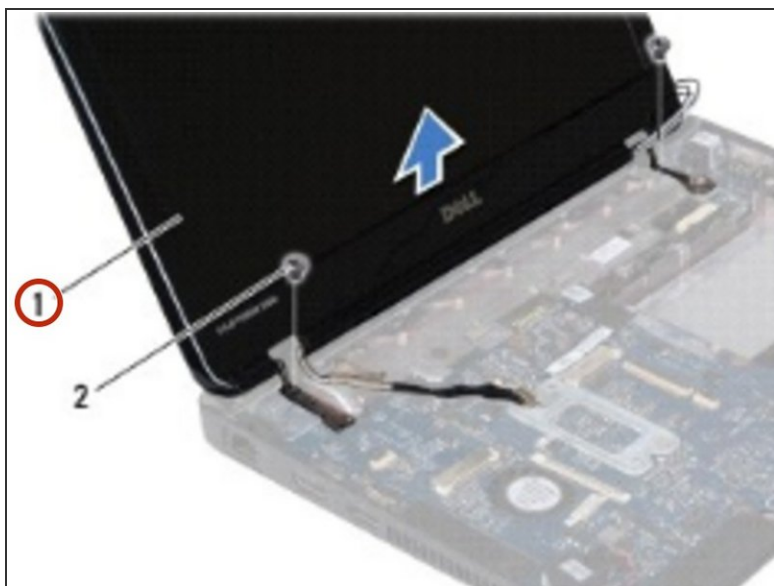
- Remove the two screws (one on each side) that secure the display assembly to the computer base.

### Step 4 — Removing the Display Assembly



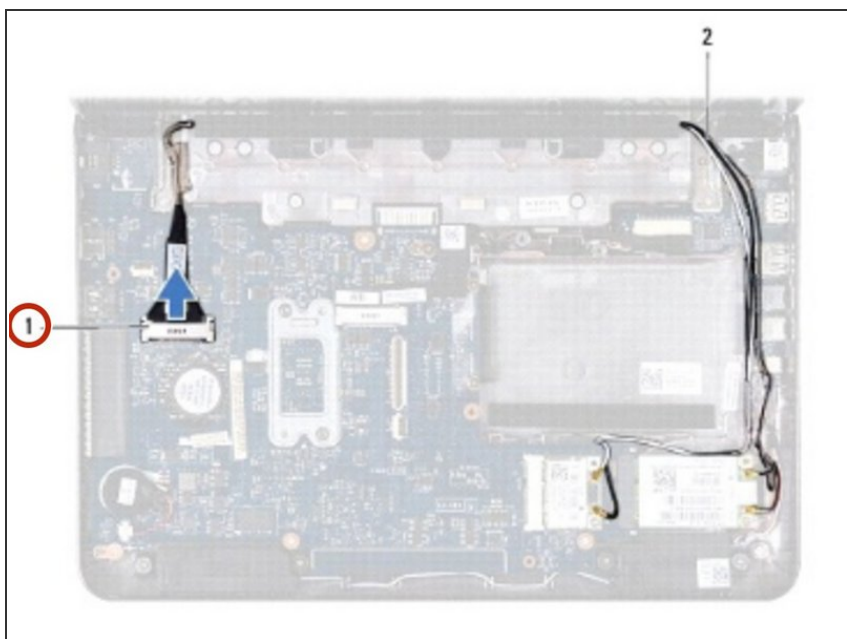
- Lift and remove the display assembly off the computer base.

## Step 5 — Placing the Display Assembly



- Place the **NEW** display assembly in position and replace the two screws (one on each side) that secure the display assembly to the computer base.

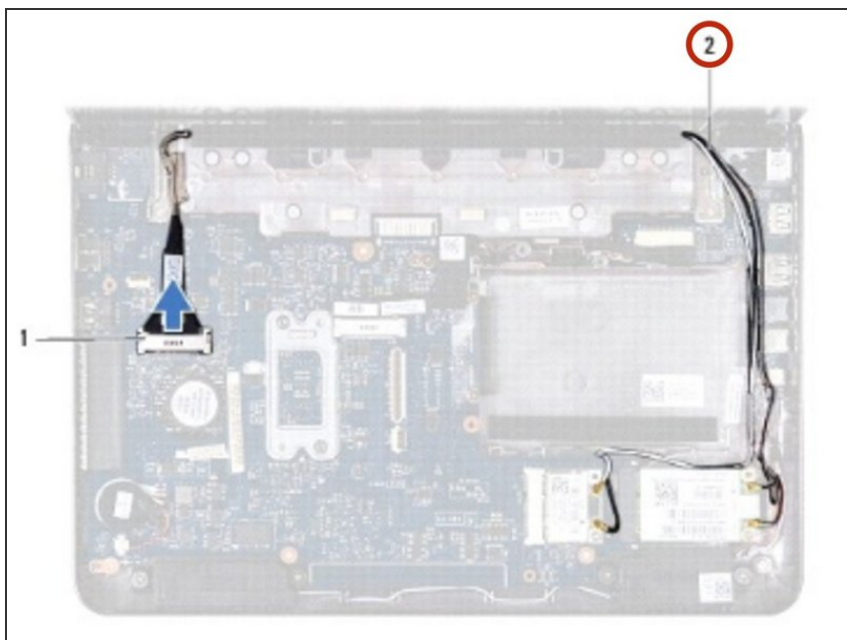
## Step 6 — Connecting the Display Cable



- Connect the display cable to the system board connector.

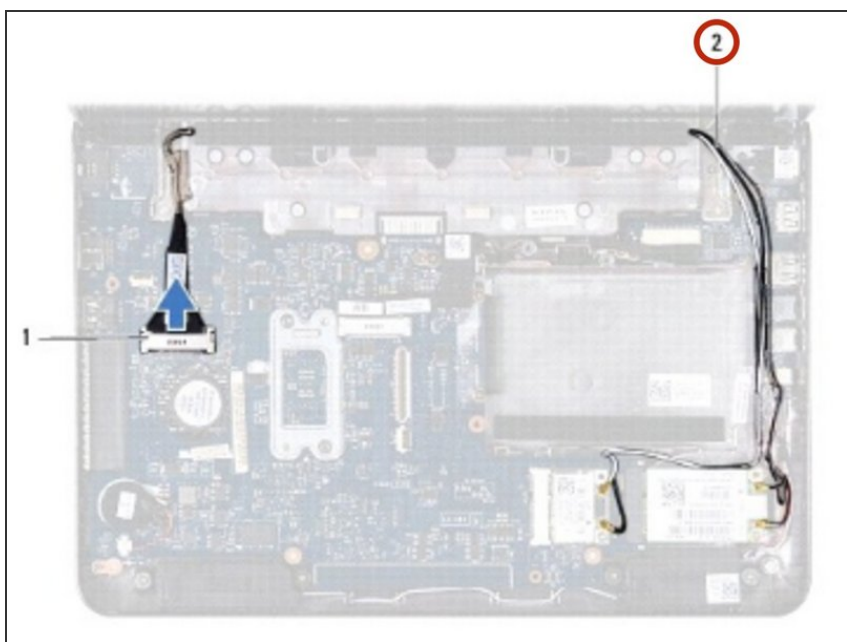


## Step 7 — Routing the Antenna Cables



- Route the Mini-Card antenna cables through the routing guides on the computer base.

## Step 8 — Connecting the Antenna Cables



- Connect the Mini-Card antenna cables to the Mini-Card(s).

To reassemble your device, follow these instructions in reverse order.