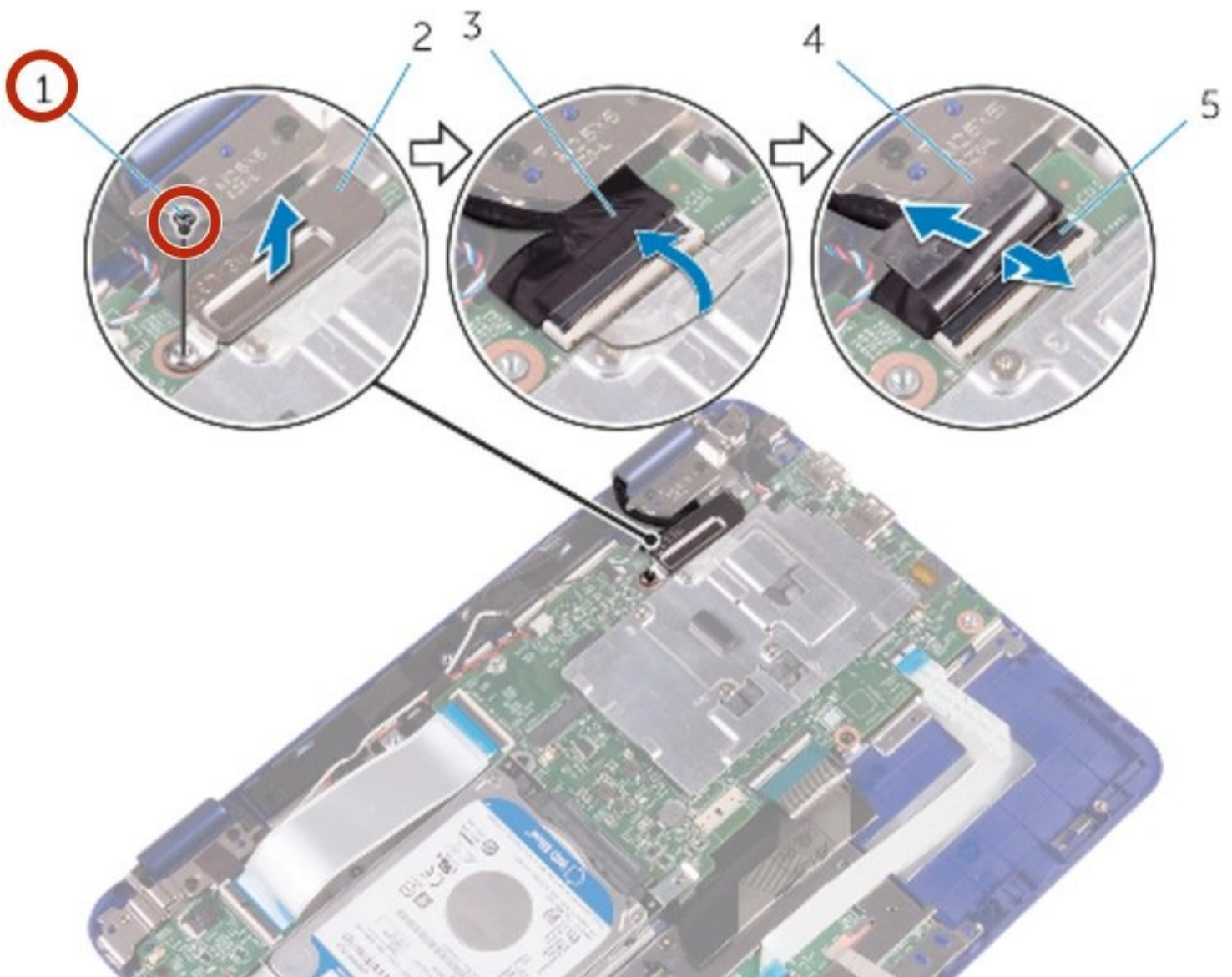




Dell Inspiron 11 3179 Display Assembly Replacement

Written By: Terrence15



INTRODUCTION

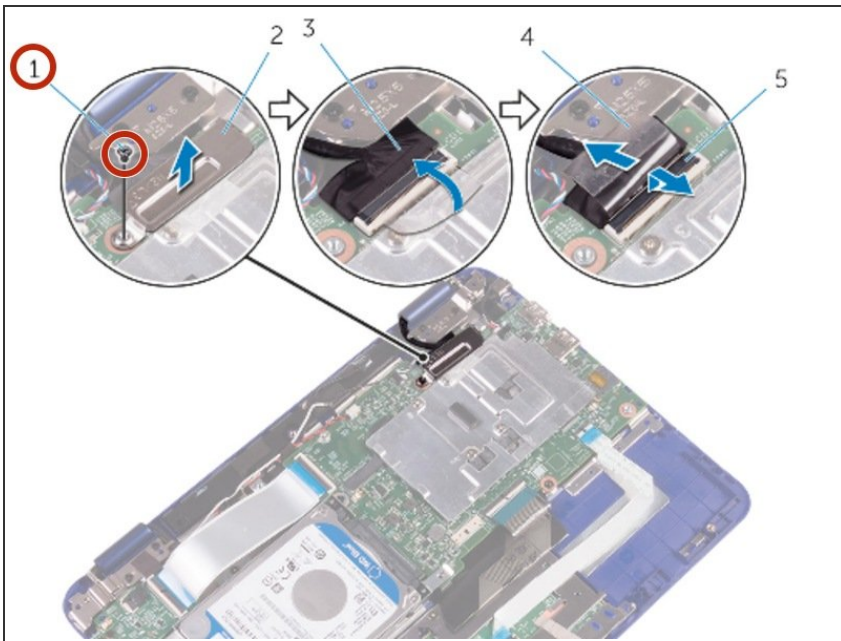
In this guide, we will show you how to remove and replace the Display Assembly.



TOOLS:

- [Phillips #0 Screwdriver](#) (1)
-

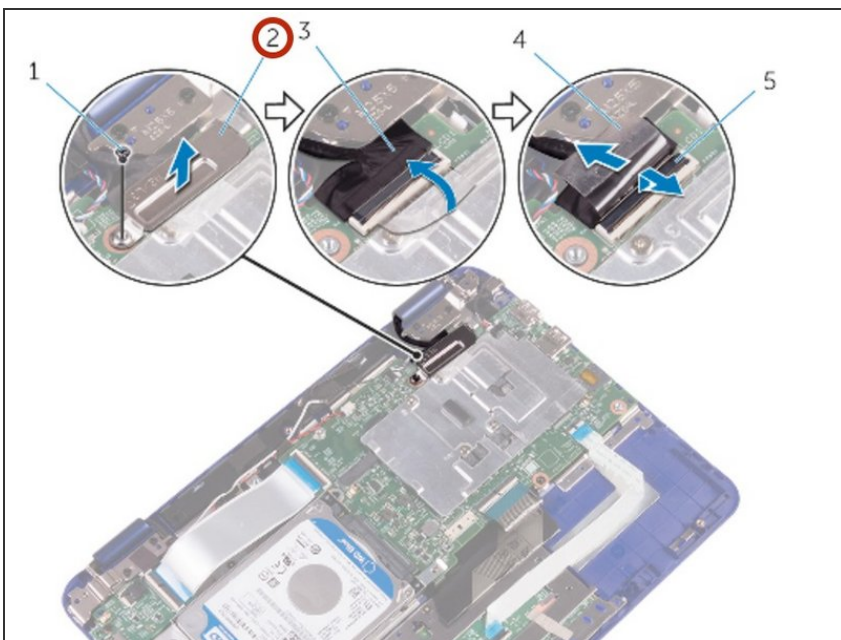
Step 1 — Remove the Screw



⚠ WARNING: Before working inside your computer, read the safety information that shipped with your computer and follow the steps in [Before working inside your computer](#). After working inside your computer, follow the instructions in [After working inside your computer](#).

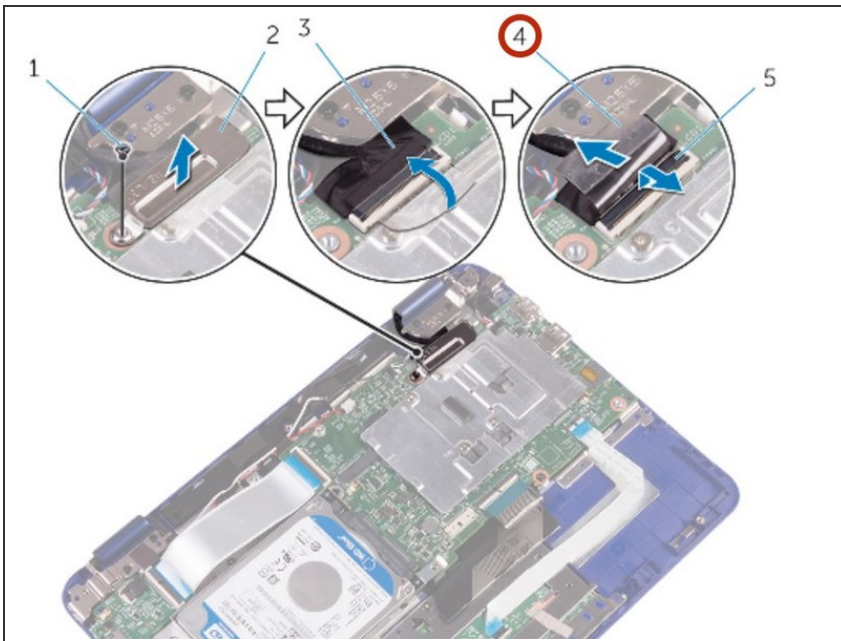
- Remove the screw that secures the display-cable bracket to the system board.

Step 2 — Lifting the Display Cable



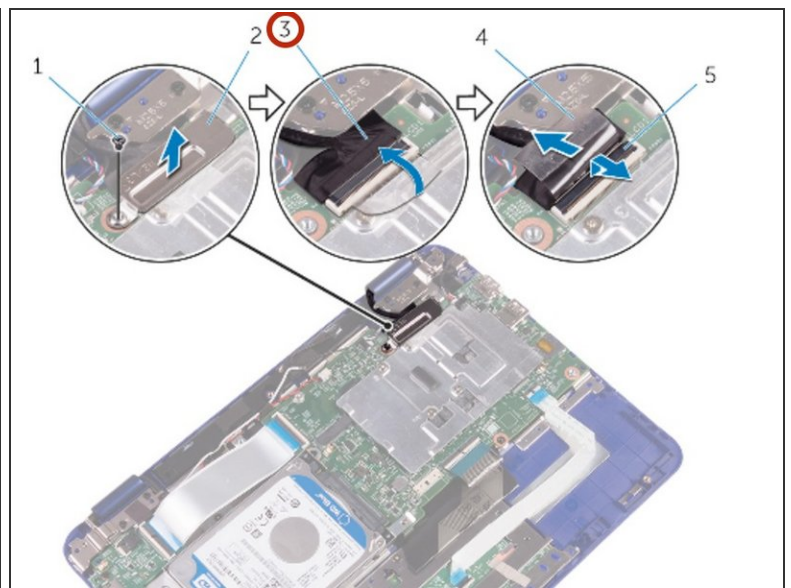
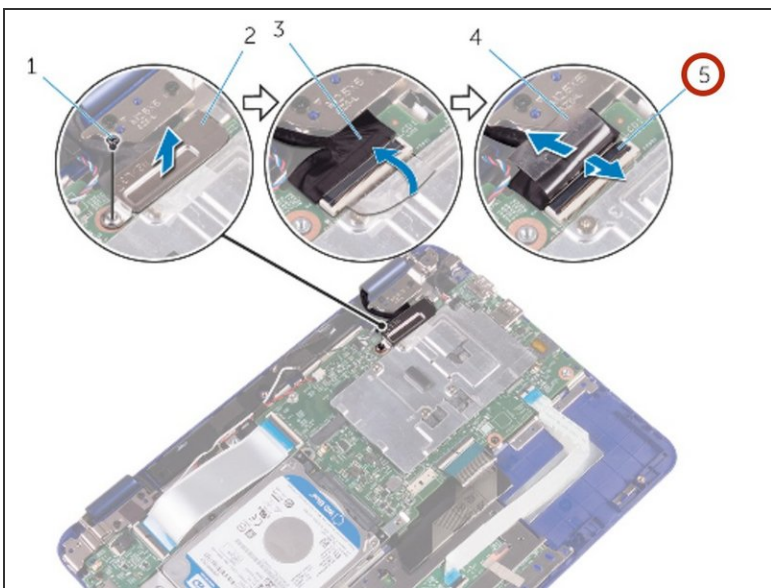
- Lift the display-cable bracket off the system board.

Step 3 — Peeling the Tape



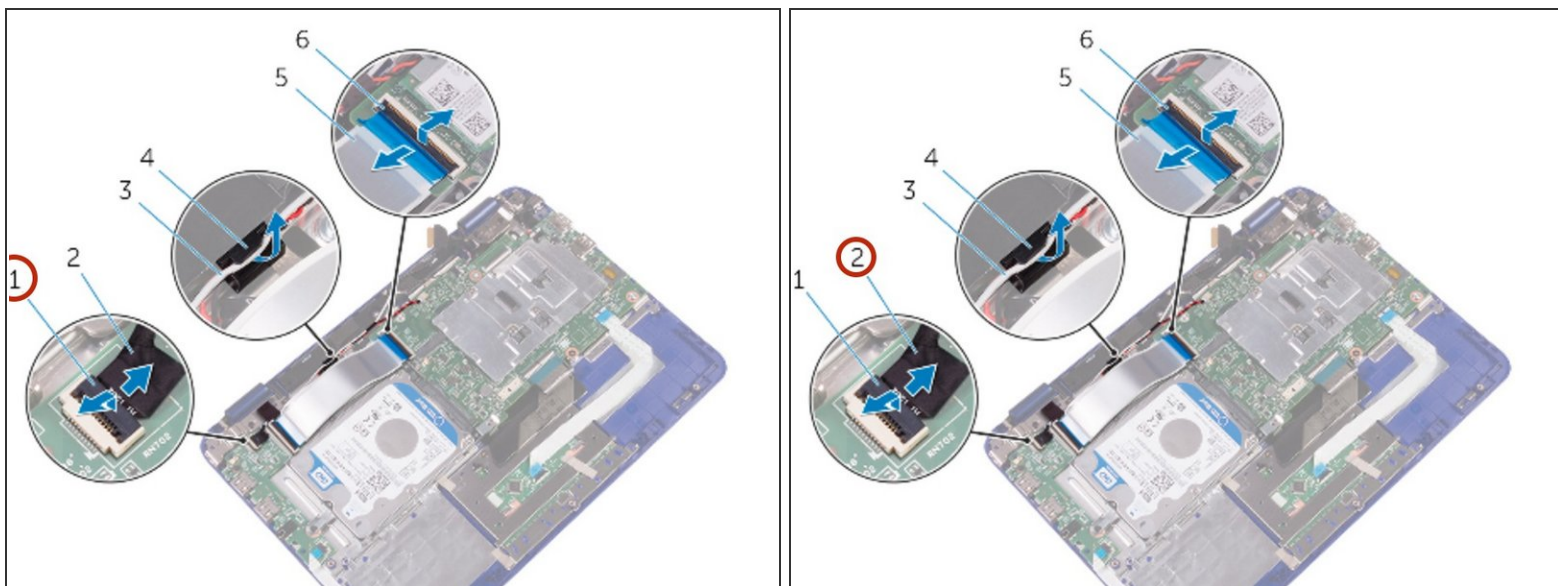
- Peel off the tape to access the display cable.

Step 4 — Disconnecting the Display Cable



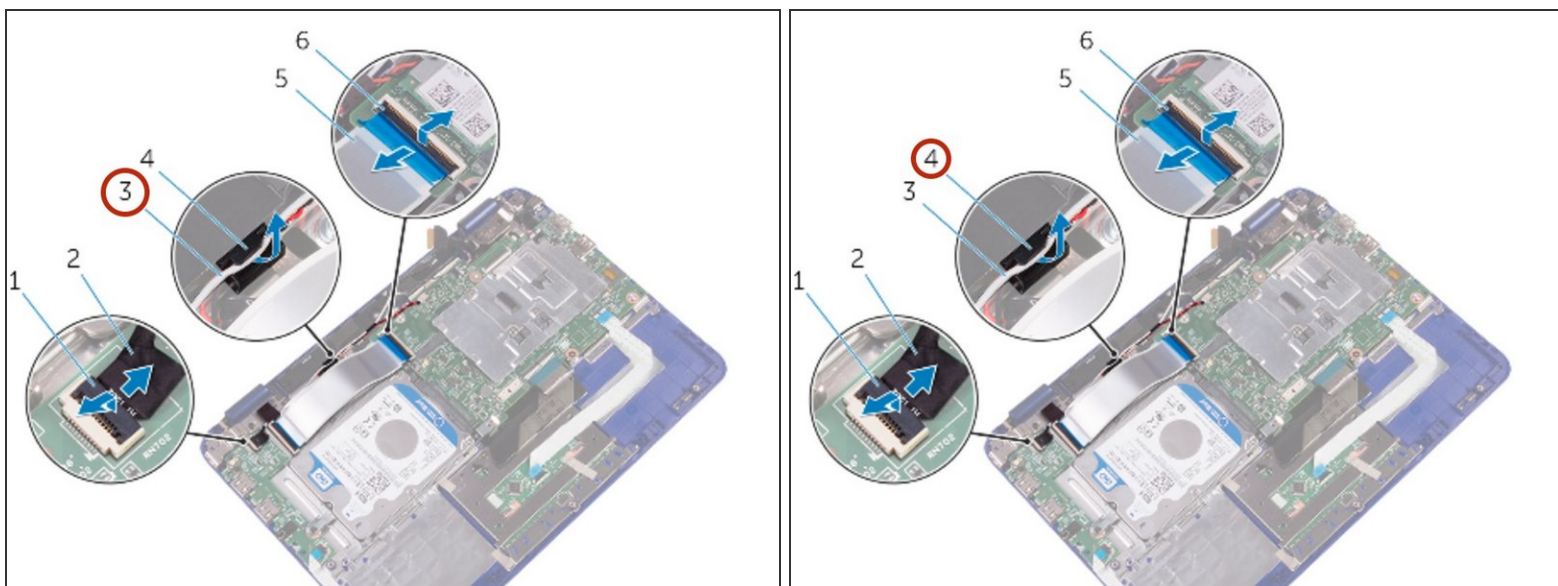
- Open the latch and disconnect the display cable.

Step 5 — Disconnecting the Sensor-Board Cable



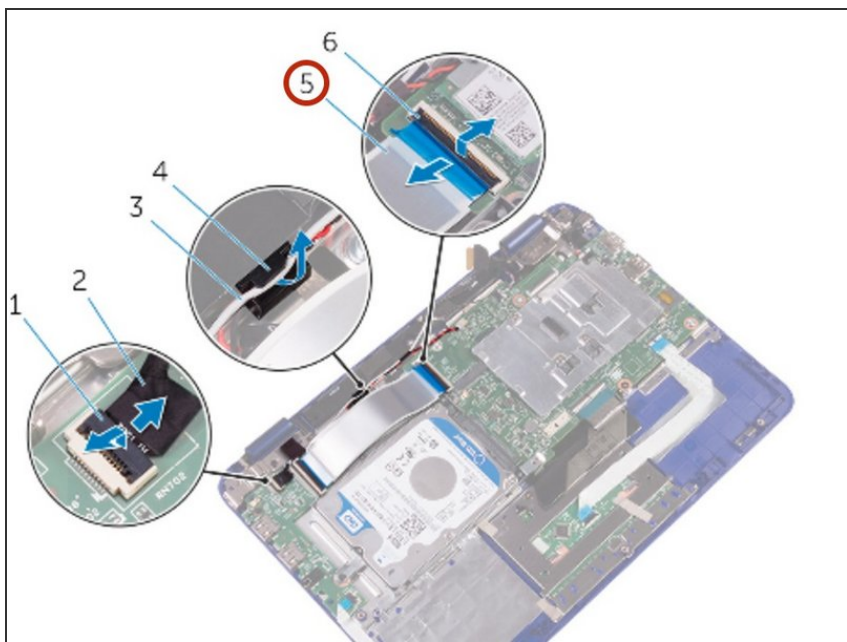
- Open the latch and disconnect the sensor-board cable from the I/O board.

Step 6 — Remove the Antenna Cable



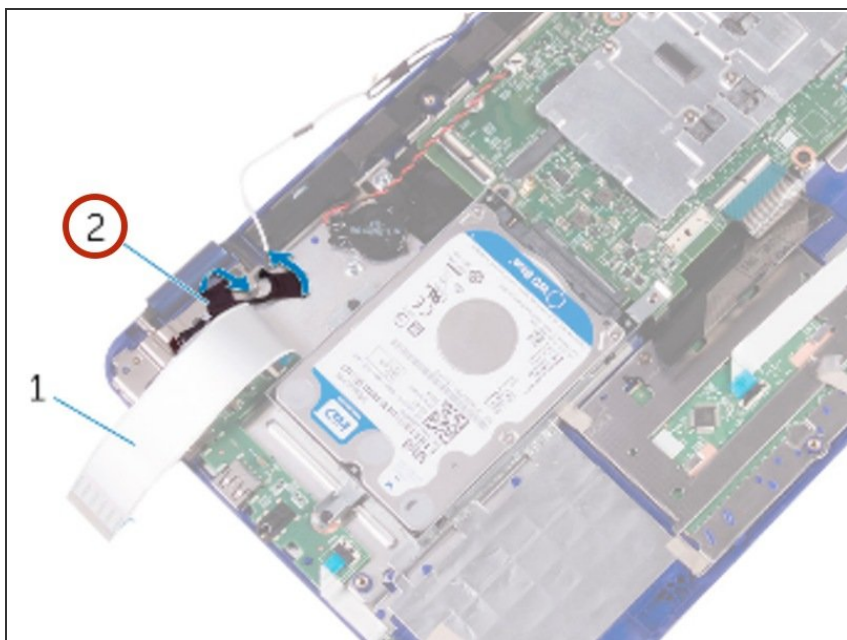
- Remove the antenna cable from the routing guide on the right speaker.

Step 7 — Open the Latch



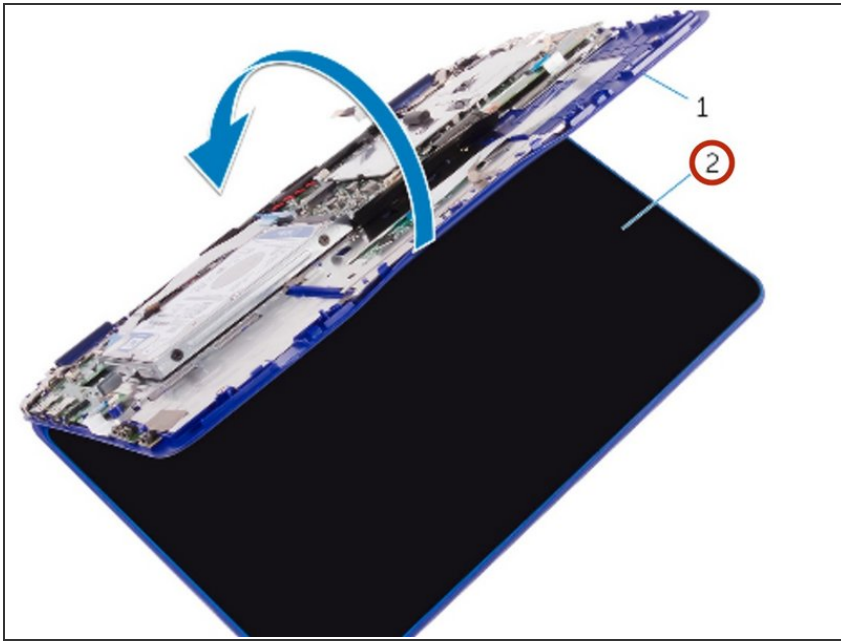
- Open the latch and disconnect the I/O-board cable from the system board.

Step 8 — Peeling the Tapes



- Peel the tapes off the display hinges.

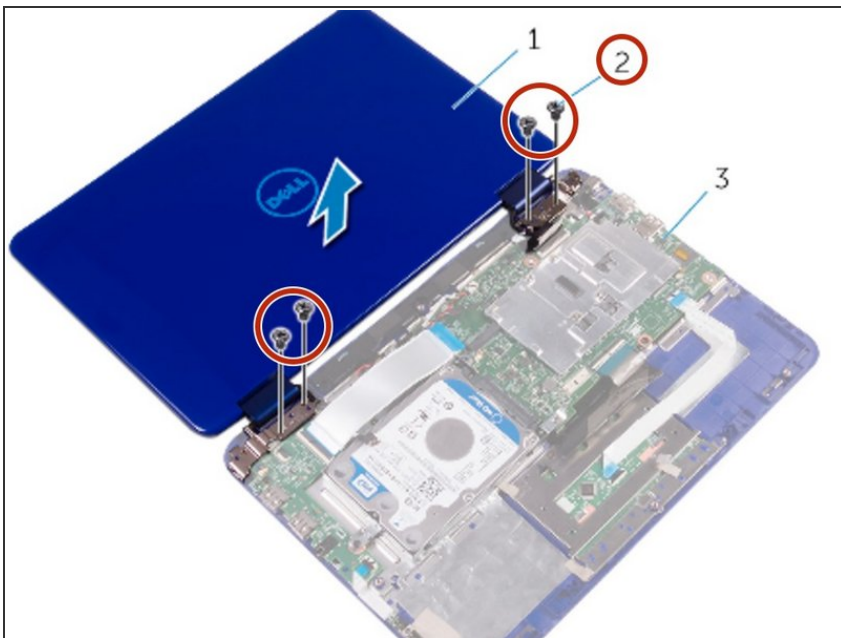
Step 9 — Opening the Display



- Turn the computer over and open the display as far as possible.

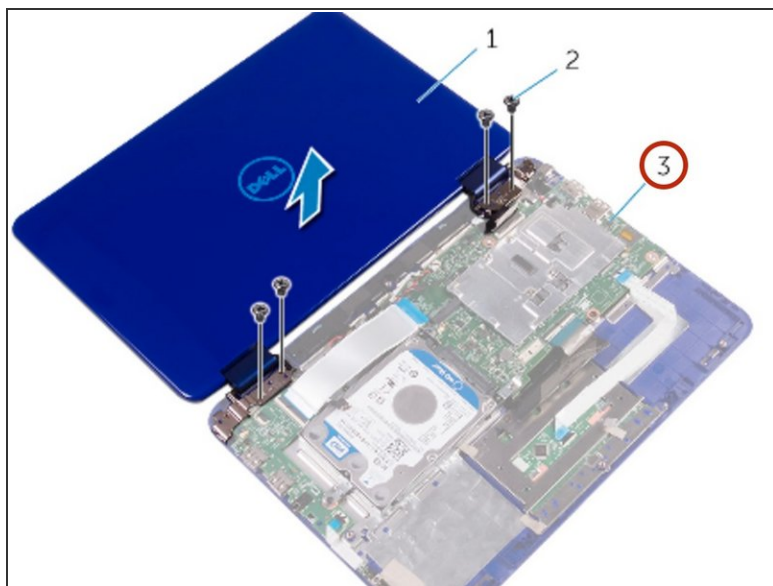
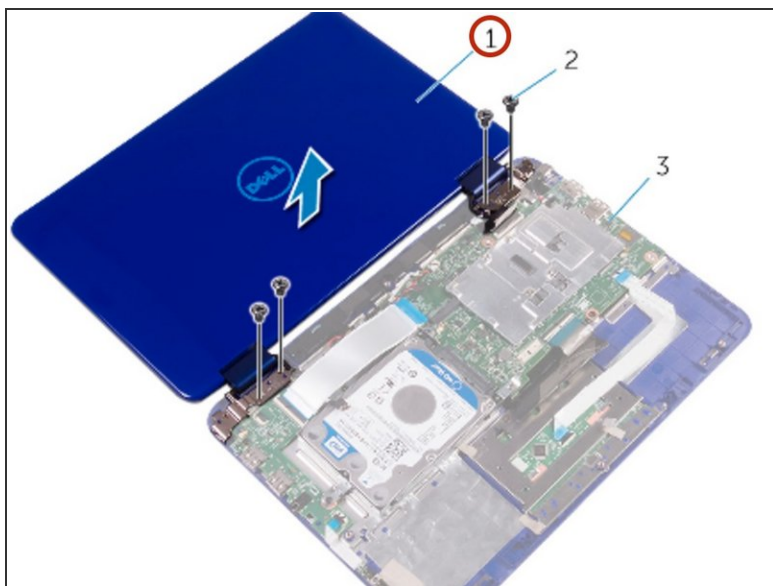
⚠ CAUTION: Place the computer on a soft and clean surface to avoid scratching the display.

Step 10 — Remove the Screws



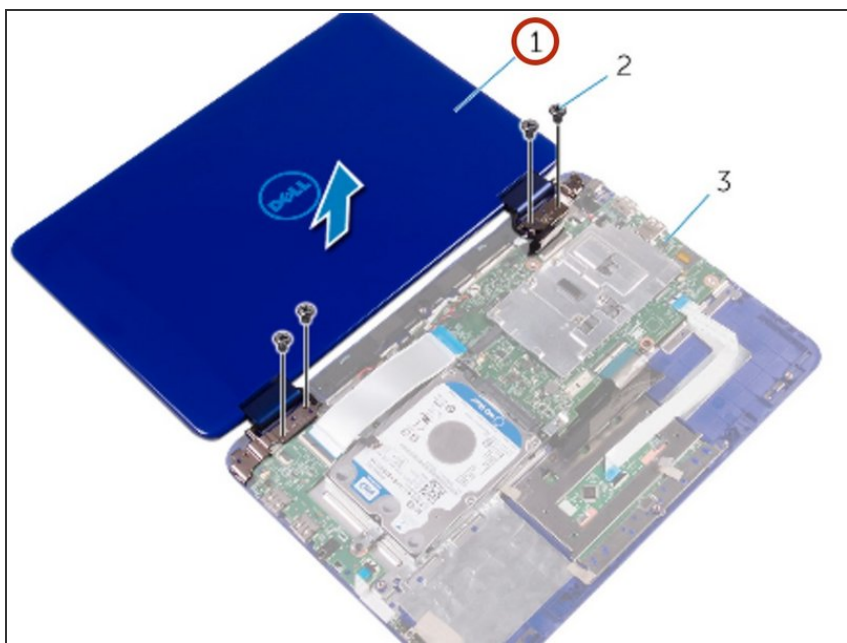
- Place the computer face down on a flat surface.
- Remove the screws that secure the display assembly to the palm-rest and keyboard assembly.

Step 11 — Lifting the Display Assembly



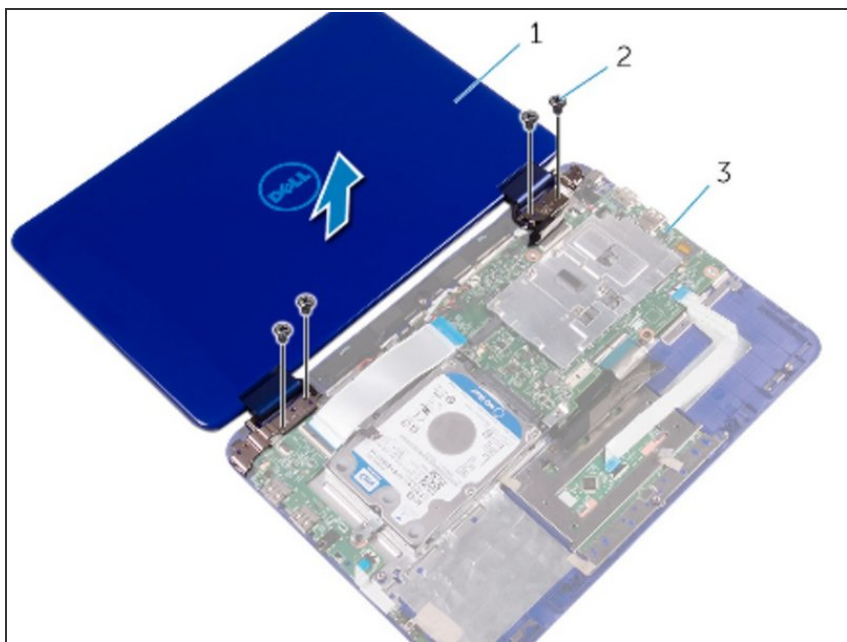
- Lift the display assembly off the palm-rest and keyboard assembly.

Step 12 — Placing the Display Assembly



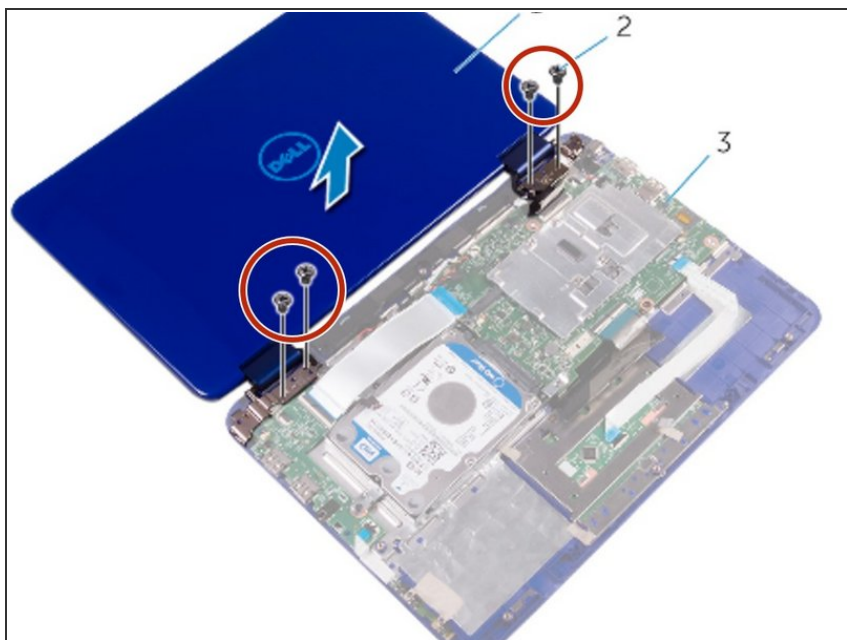
- Place the **NEW** display assembly on the palm-rest and keyboard assembly.

Step 13 — Align the Screw Holes



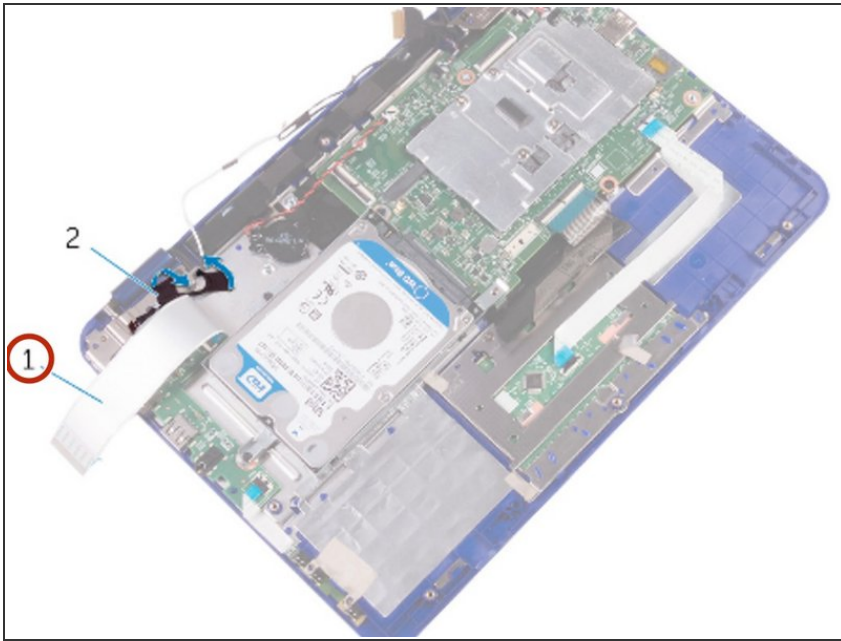
- Align the screw holes on the display hinges with the screw holes on the palm-rest and keyboard assembly.

Step 14 — Replace the Screws



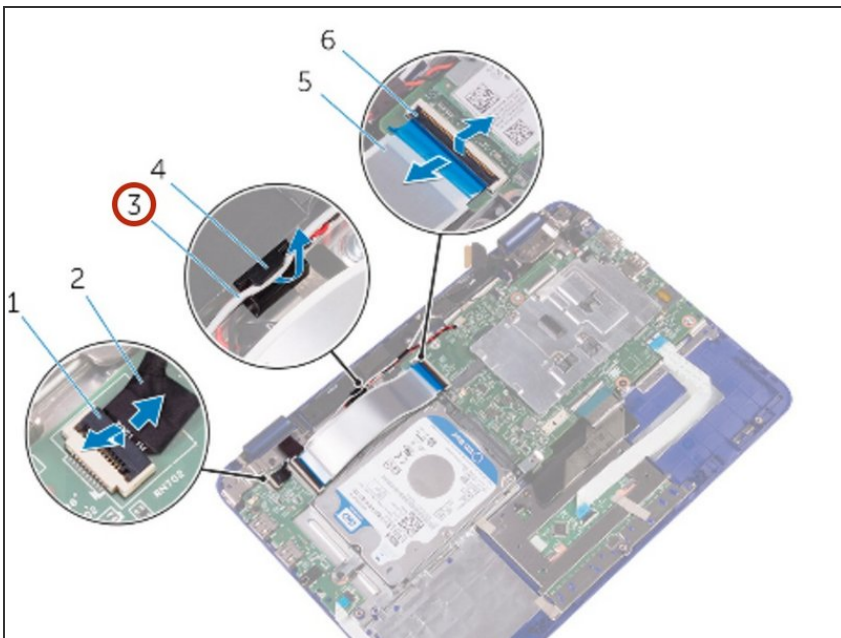
- Replace the screws that secure the display assembly to the palm-rest and keyboard assembly.

Step 15 — Sliding the I/O Board Cable



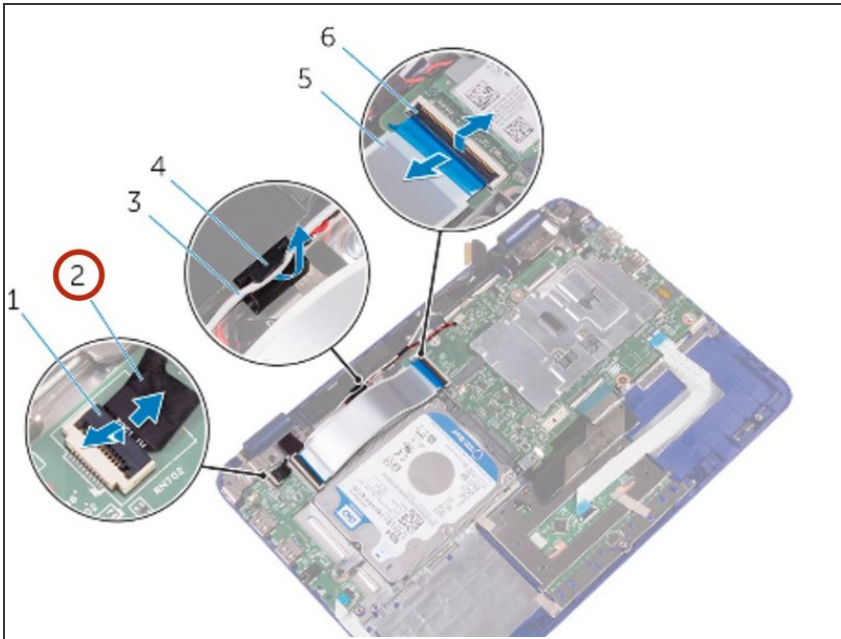
- Turn the computer over and close the display.
- Slide the I/O-board cable into its slot on the system board and press down the latch to secure the cable.

Step 16 — Routing the Antenna Cable



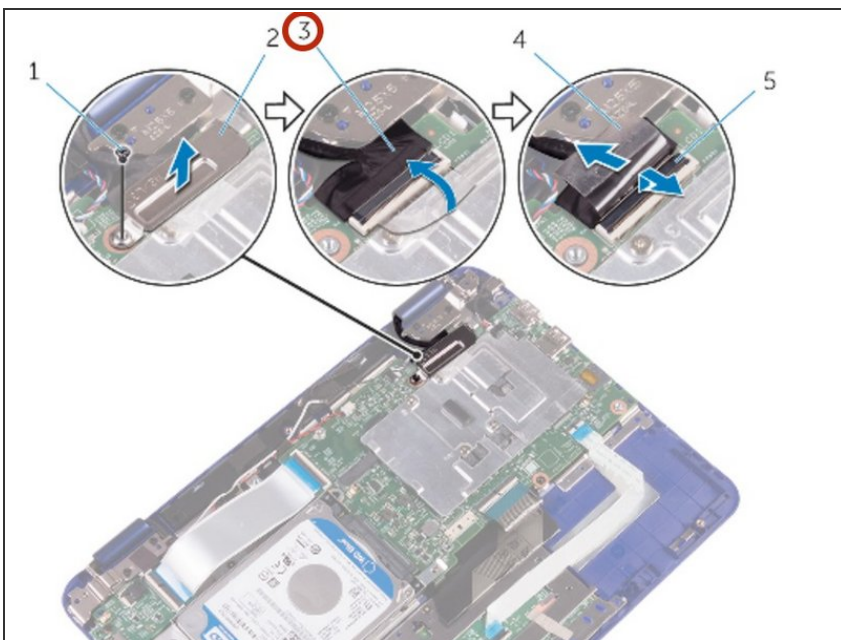
- Route the antenna cable through its routing on the right speaker.

Step 17 — Sliding the Sensor-Board Cable



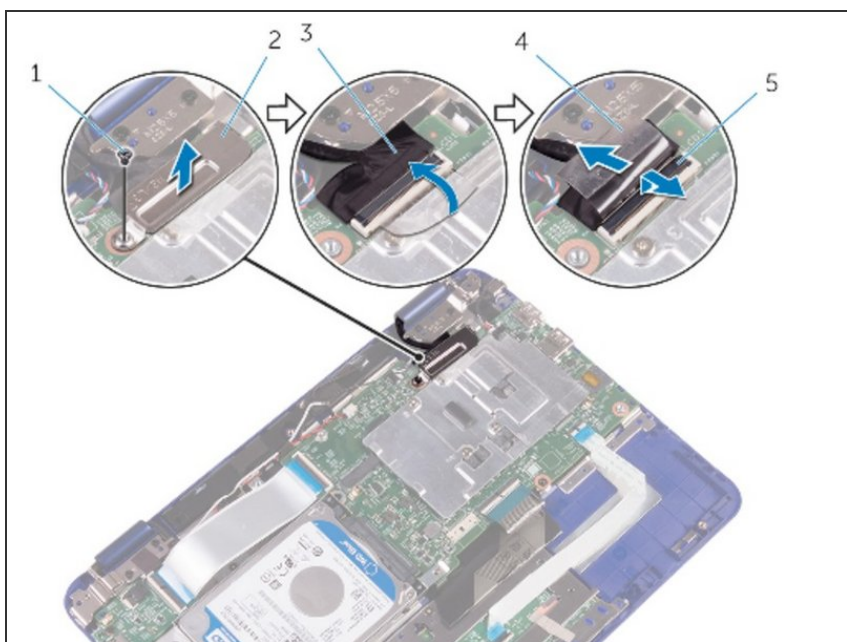
- Slide the sensor-board cable into its slot on the I/O board and press down the latch to secure the cable.

Step 18 — Sliding the Display Cable



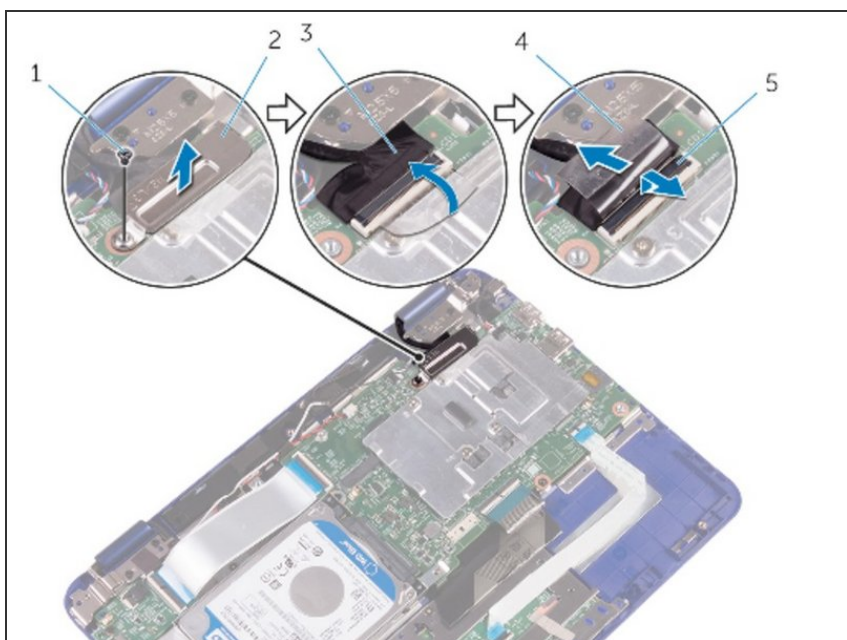
- Slide the display cable into its slot on the system board and press down the latch to secure the cable.

Step 19 — Adhering the Tape



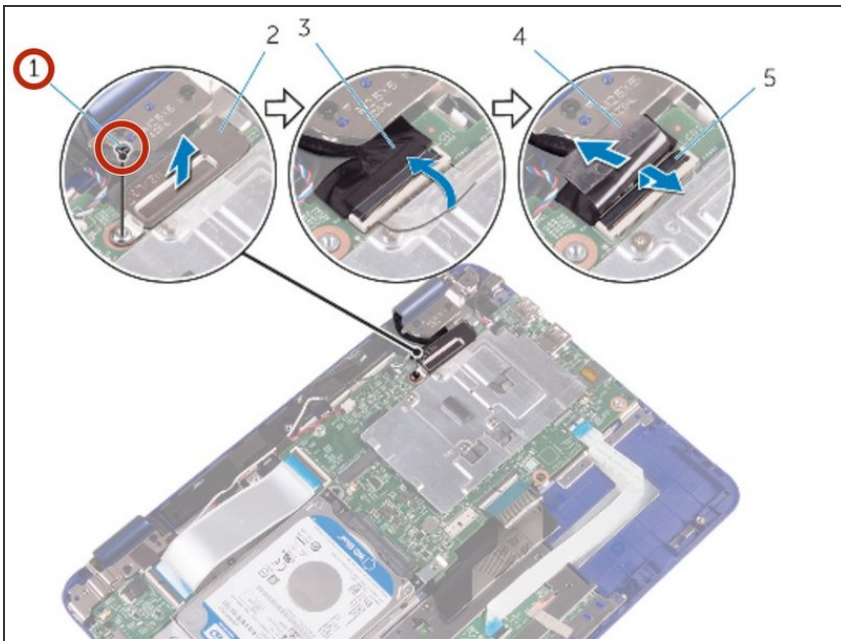
- Adhere the tape on the display cable.

Step 20 — Align the Screw Hole



- Align the screw hole on the display-cable bracket with the screw hole on the system board.

Step 21 — Replace the Screw



- Replace the screw that secures the display-cable bracket to the system board.

To reassemble your device, follow these instructions in reverse order.