



Dell Inspiron 11 i3147 Camera Replacement

How to replace a Dell Inspiron 11 i3147 camera.

Written By: Muhammad Erchid





TOOLS:

- [Phillips #0 Screwdriver](#) (1)
 - [Spudger](#) (1)
 - [Tweezers](#) (1)
-

Step 1 — Camera



- Close the computer and turn it over, with the bottom of the computer facing up.

Step 2



- Remove the nine 7.6mm PH0 screws on the cover.

Step 3



- Use a plastic opening tool to remove the cover from the computer.

Step 4



- Remove the three 4.7mm PH0 screws that secure the battery to the computer.

Step 5



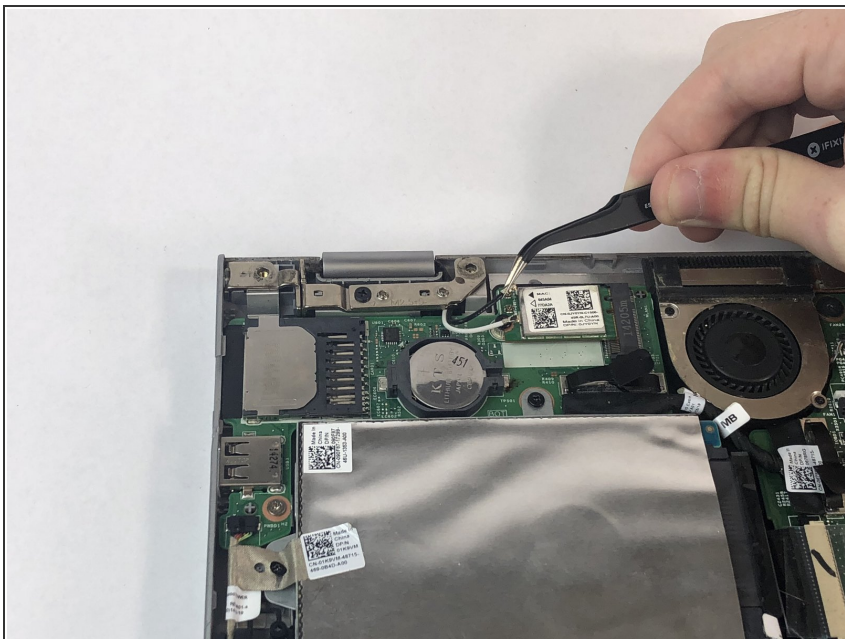
- Remove the hard drive cable from the battery.

Step 6



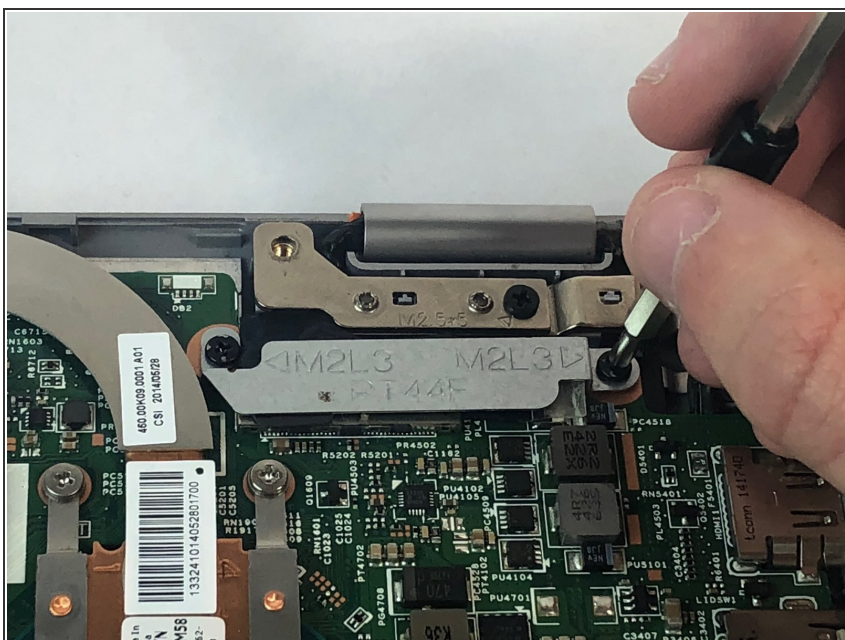
- Lift the battery from the keyboard.

Step 7



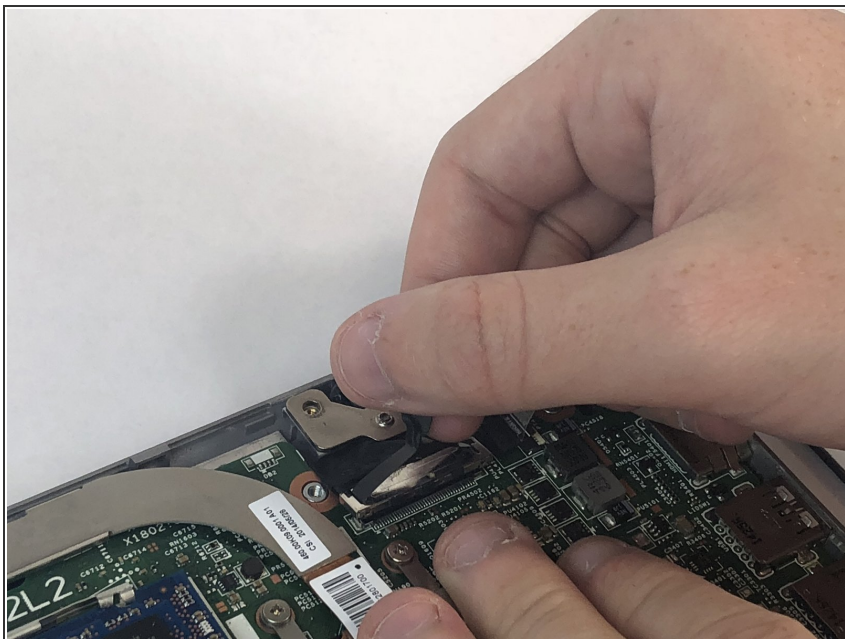
- Disconnect antenna cables.

Step 8



- Remove 2 4mm PH0 screws that connect display cable bracket to the system board.
- Lift display cable bracket off the system board.

Step 9



- Use the pull tab to disconnect the display cable from the system board.

Step 10



- Pull the windows button board cable from the system board.

Step 11



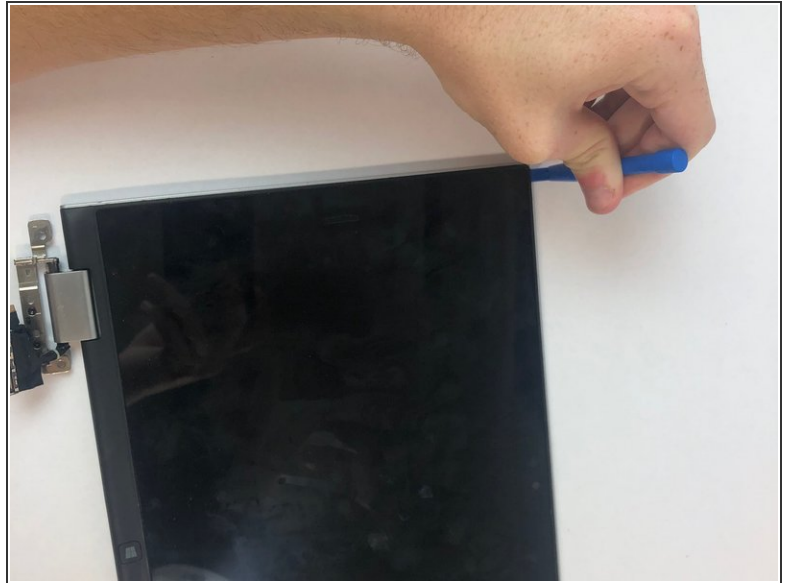
- Remove the 2 5.6mm PH0 screws.

Step 12



- Separate the screen and body of the computer.

Step 13



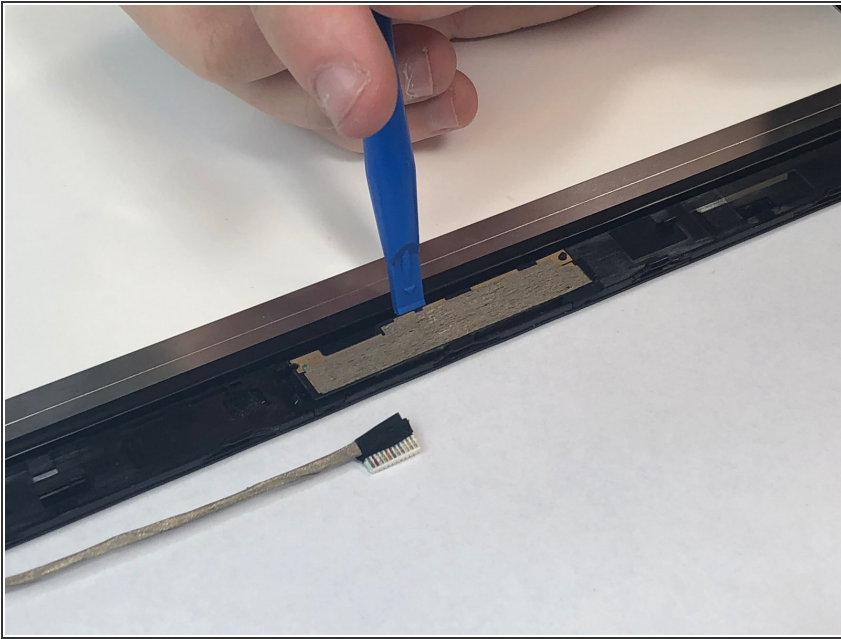
- Use a plastic opening tool to take the display panel assembly off the display back cover and antenna assembly. Start from the top.

Step 14



- Place display panel face down on a flat surface

Step 15



- Use a plastic opening tool to take the camera module off the display.

To reassemble your device, follow these instructions in reverse order.