



# Dell Inspiron 11-3138 Display Assembly Replacement

Written By: Terrence15



---

## INTRODUCTION

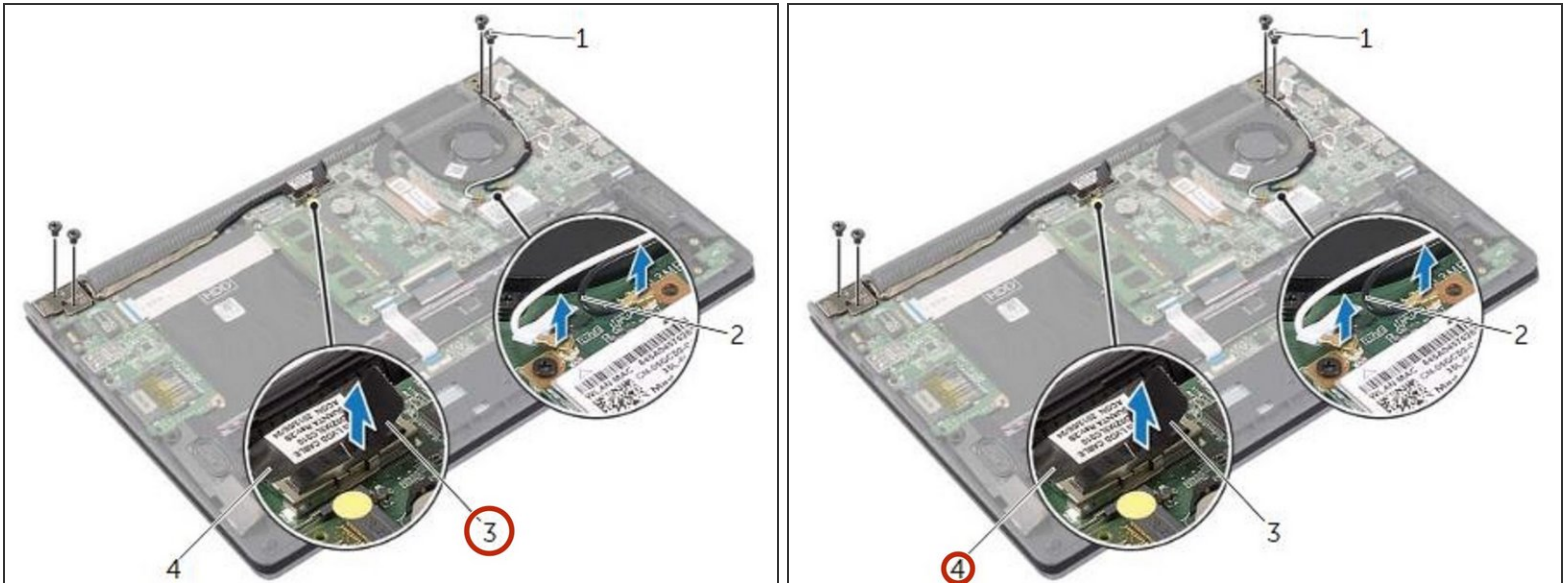
In this guide, we will show you how to remove and replace the Display Assembly.



### TOOLS:

- [Phillips #0 Screwdriver](#) (1)
-

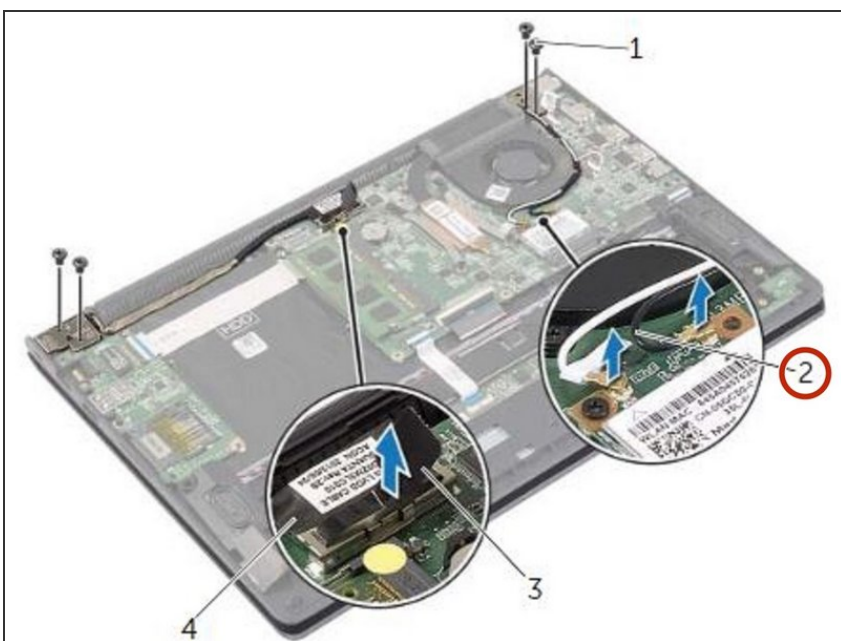
## Step 1 — Disconnecting the Display Cable



**⚠ WARNING:** Before working inside your computer, read the safety information that shipped with your computer and follow the steps in ["Before Working Inside Your Computer"](#). After working inside your computer, follow the instructions in ["After Working Inside Your Computer"](#).

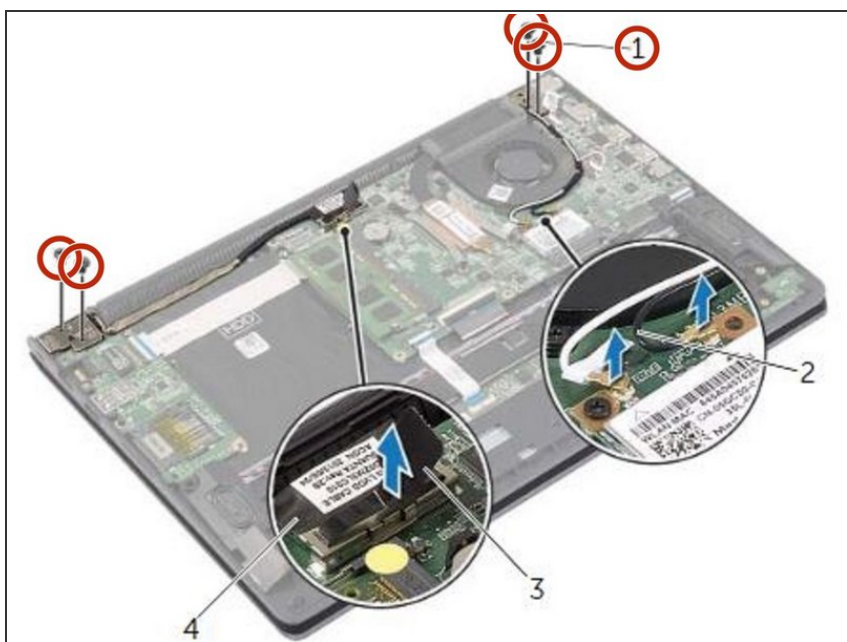
- Using the pull tabs, disconnect the display cable from the system board.

## Step 2 — Disconnecting the Antenna Cables



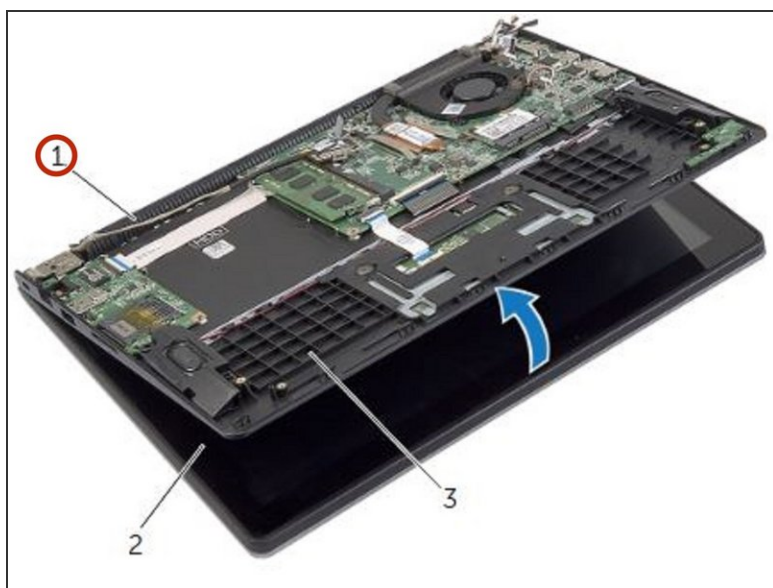
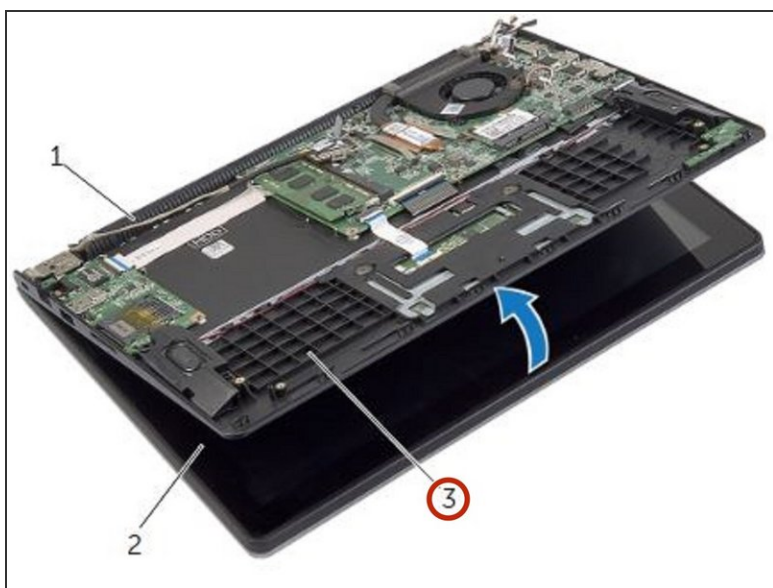
- Disconnect the antenna cable from the wireless card and remove the cable from the routing guides on the fan.

### Step 3 — Remove the Screws



- Remove the screws that secure the display assembly to the palm-rest assembly.

### Step 4 — Open the Palm-Rest Assembly



- Open the palm-rest assembly as far as possible to release the display hinge from the palm-rest assembly.

## Step 5 — Lifting the Palm-Rest Assembly



- Lift the palm-rest assembly away from the display assembly.

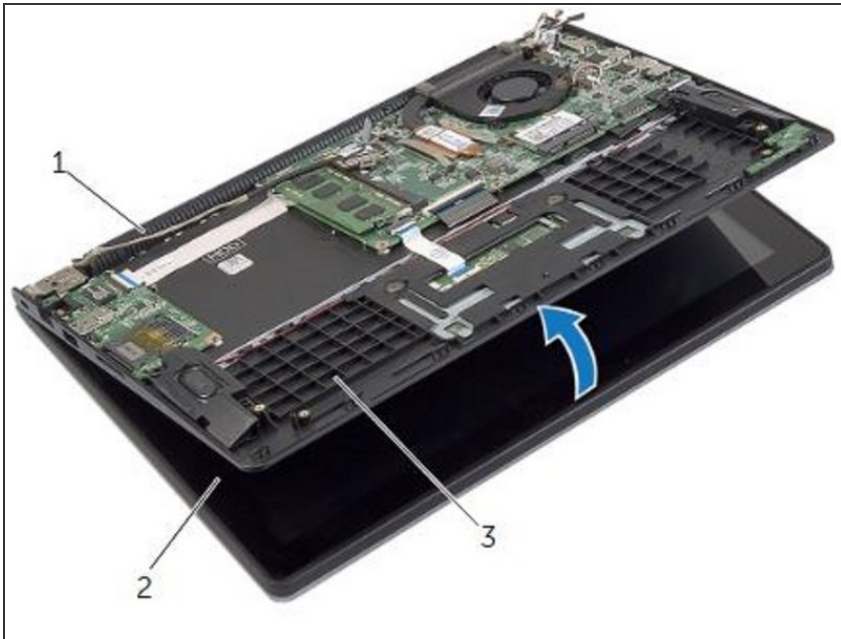
## Step 6 — Placing the Palm-Rest Assembly



- Place the **NEW** palm-rest assembly on the display assembly.

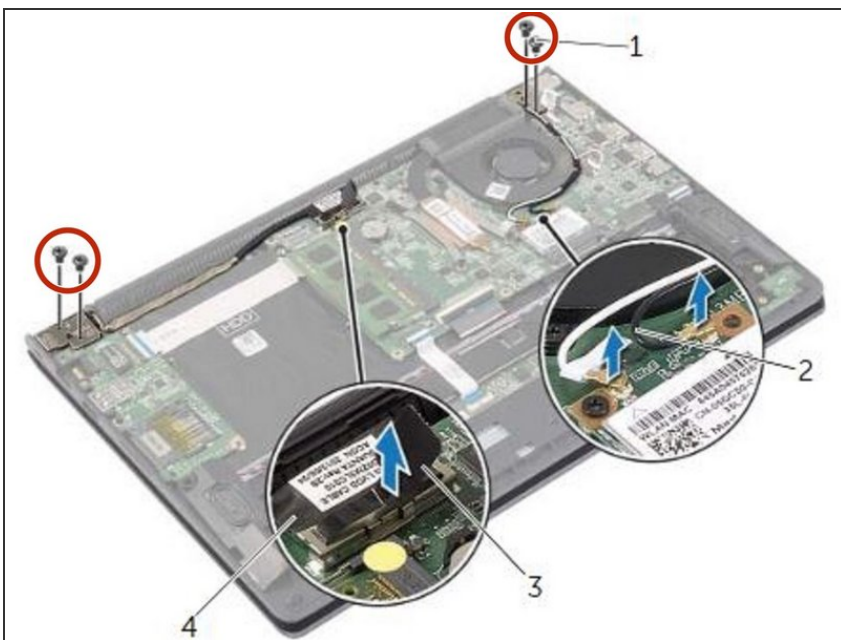


## Step 7 — Aligning the Screw Holes



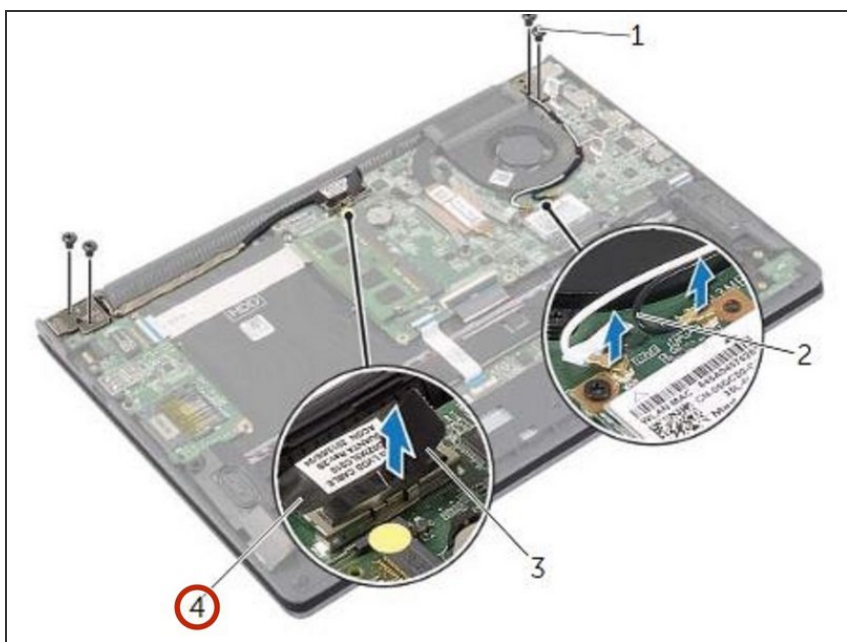
- Align the screw holes on the palm-rest assembly with the screw holes on the display hinges and press down the display hinges to close the palm-rest assembly.

## Step 8 — Replace the Screws



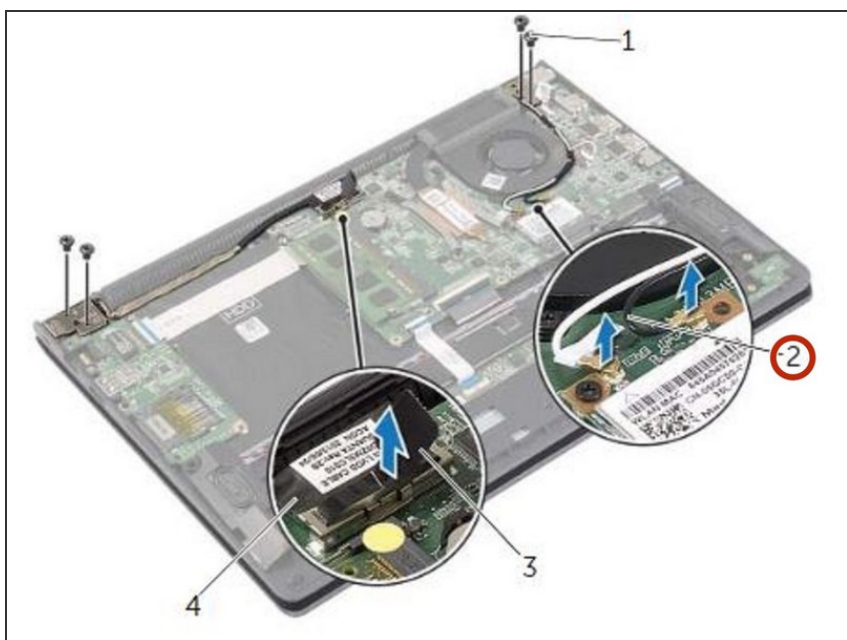
- Replace the screws that secure the display assembly to the palm-rest assembly.

## Step 9 — Connecting the Display Cables



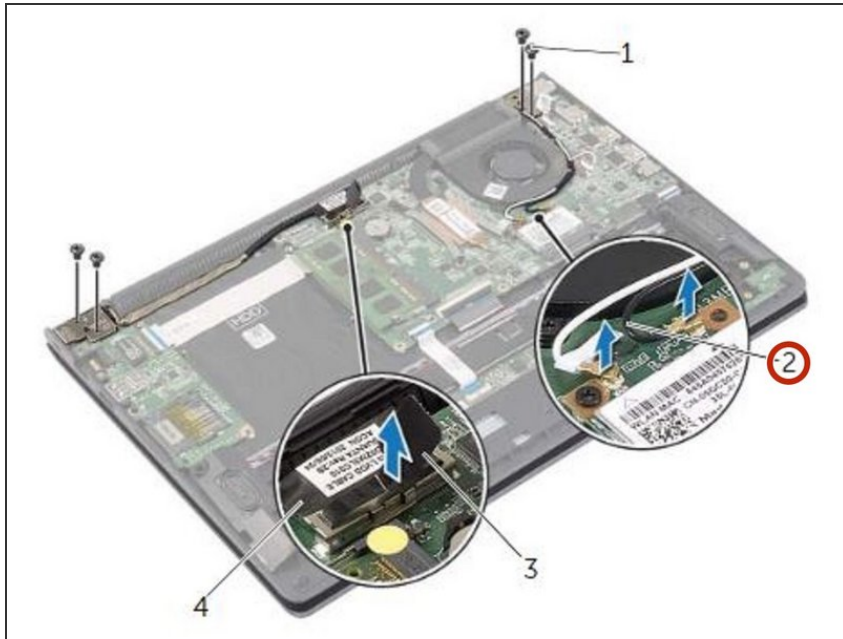
- Connect the display cables to the system board.

## Step 10 — Routing the Antenna Cables



- Route the antenna cables through the routing guides on the fan.

## Step 11 — Connecting the Antenna Cables



- Connect the antenna cables to the wireless card.

To reassemble your device, follow these instructions in reverse order.