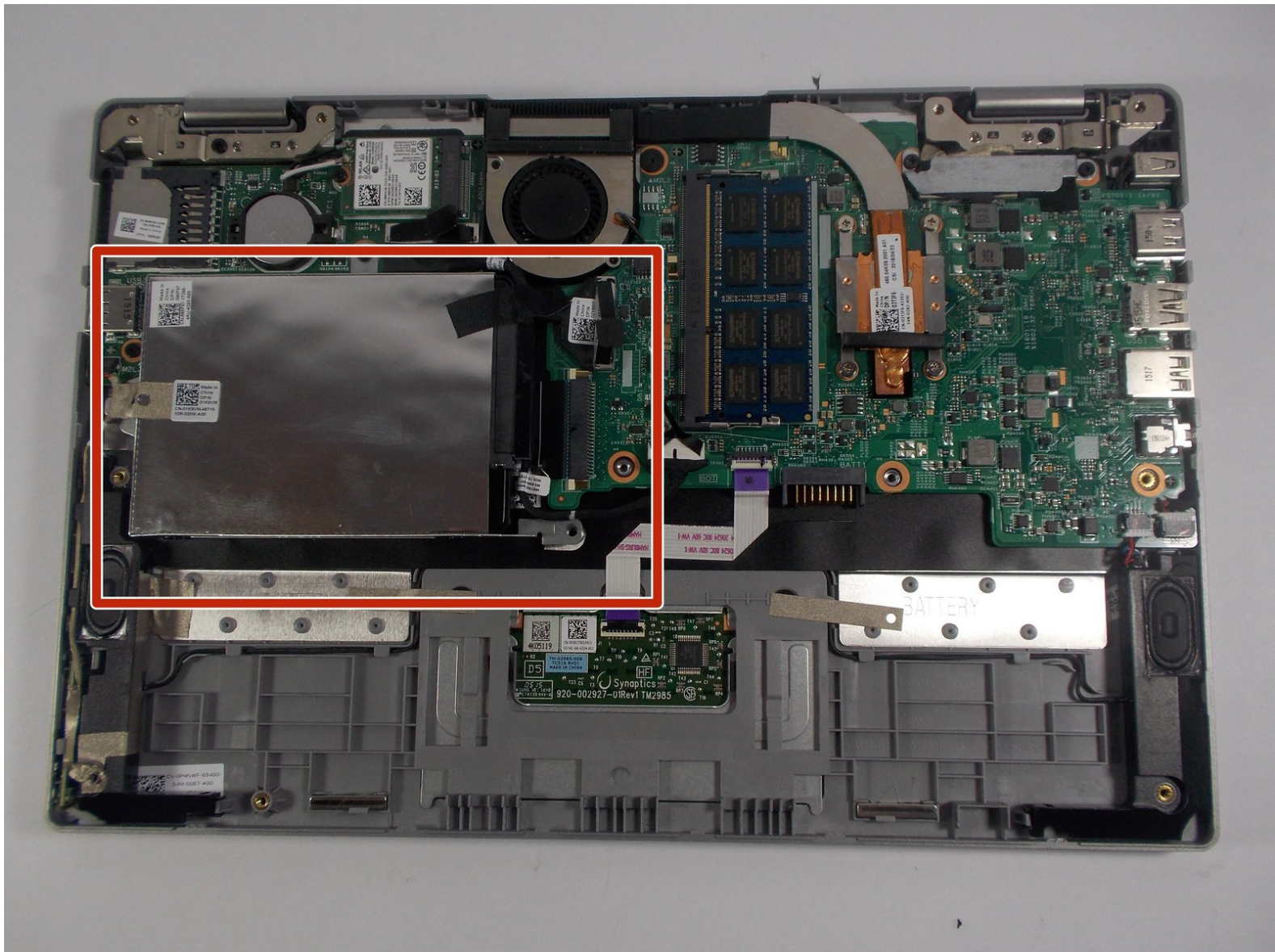




# Dell Inspiron 11-3152 Solid State Drive Replacement

This guide will show you have to get to and remove the Solid State Drive.

Written By: derek odoi



## INTRODUCTION

This guide will show you how to get to and remove the Solid State Drive. It is responsible for the storage of data and start up of your computer.



### TOOLS:

- [Phillips #0 Screwdriver](#) (1)
  - [Spudger](#) (1)
-

## Step 1 — Back Panel



- Flip the computer over.

## Step 2



- Remove all nine 5mm Phillips head screws from the back cover using #0 Phillips head.

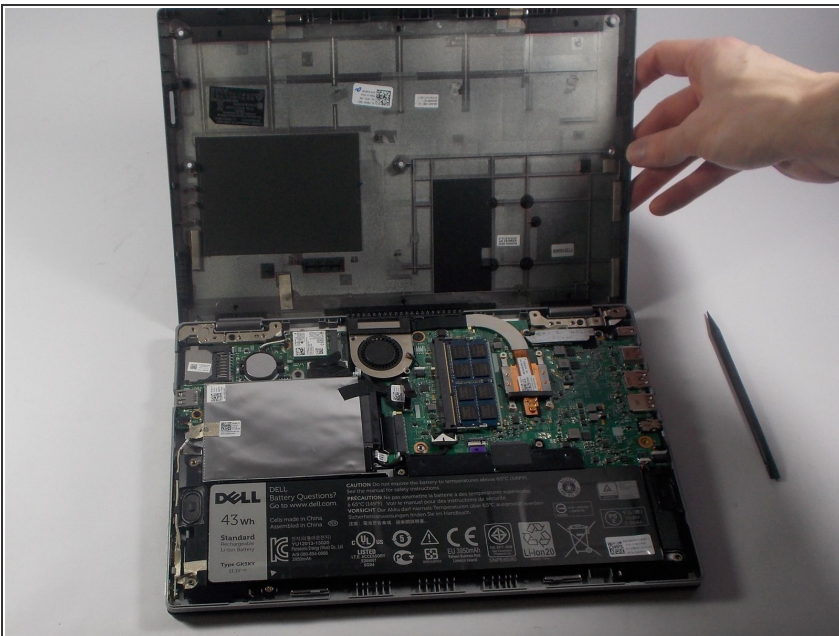


### Step 3



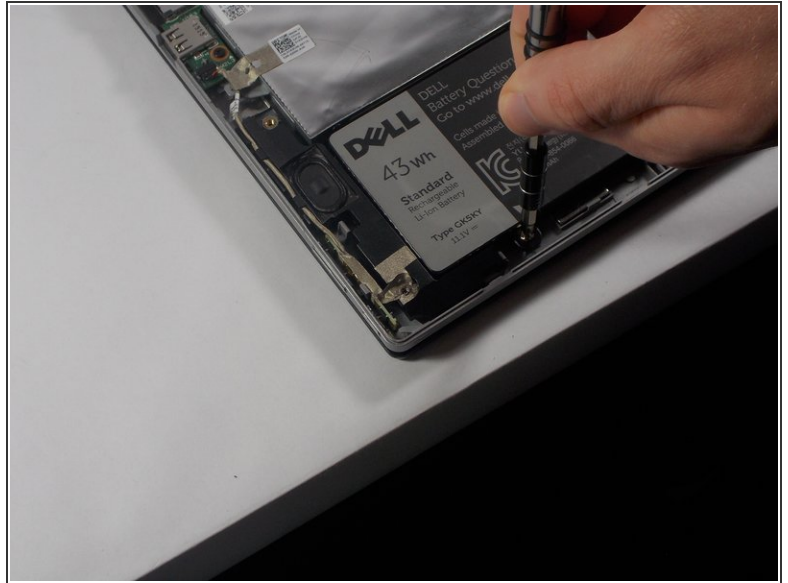
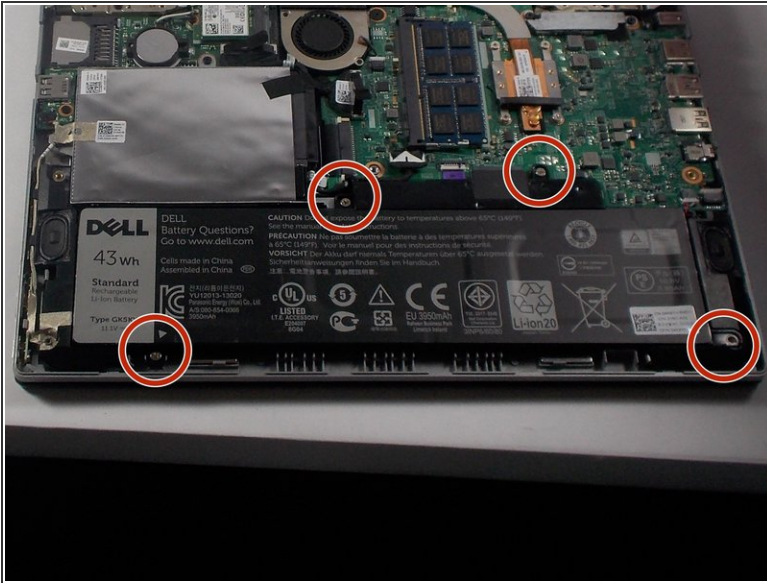
- Gently use a spudger to pull the cover away from the rest of the laptop. The cover will come off after you use the tool on two or three sides.

### Step 4 — Battery



- ⚠ Make sure that the power is off.
- After taking off the back panel, you will see the battery located at the bottom of the computer system. It's black and is clearly labeled "dell battery".

## Step 5



- Locate the battery at the bottom of the computer and remove the four 3mm screws with a Phillips #0 head that hold the battery down.

## Step 6



- Remove the Solid State Drive wire from the battery clip by detaching the wire.
- This can be done by gently pulling the connector away from the battery clip.

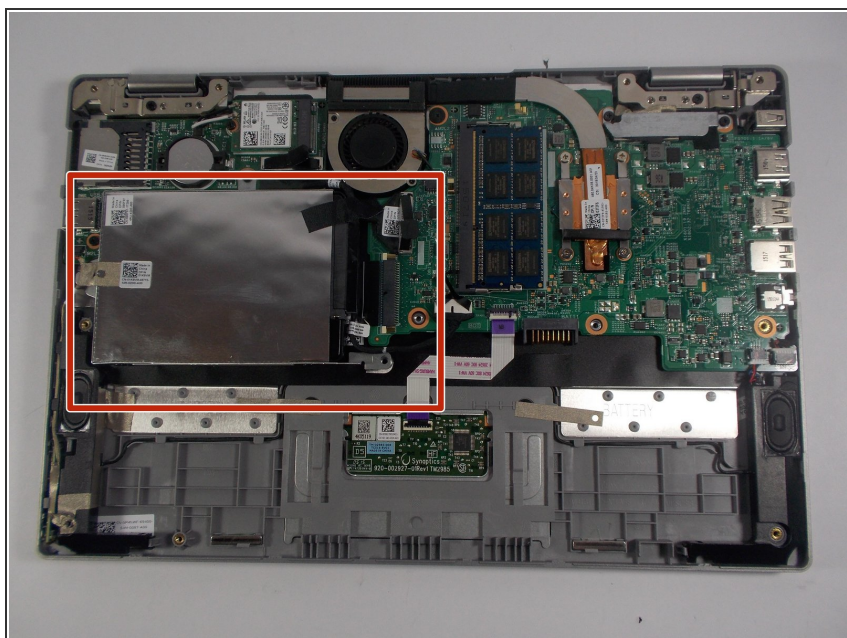


## Step 7



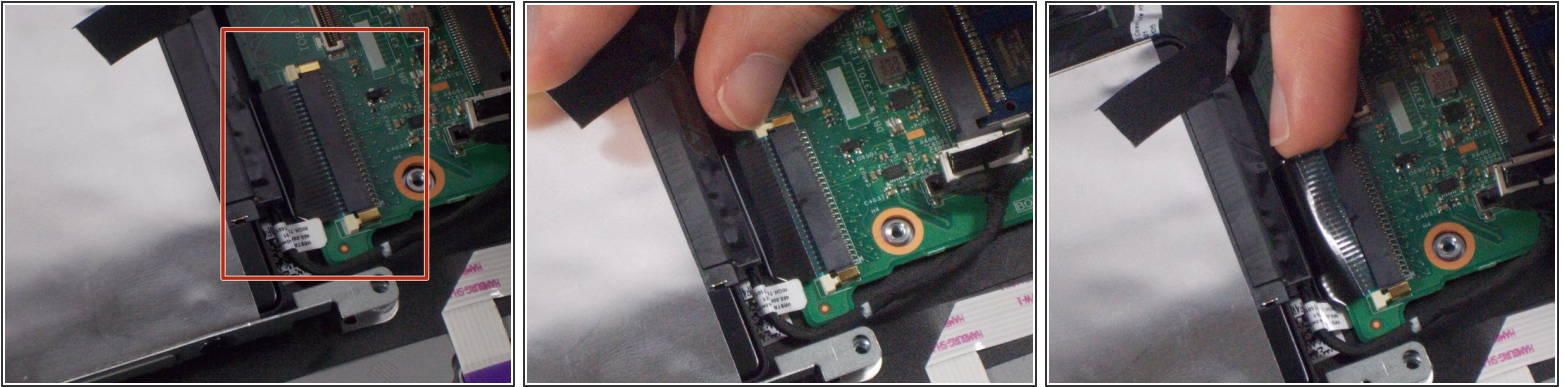
- Remove the battery from the computer system by gently lifting it from the side.

## Step 8 — Solid State Drive



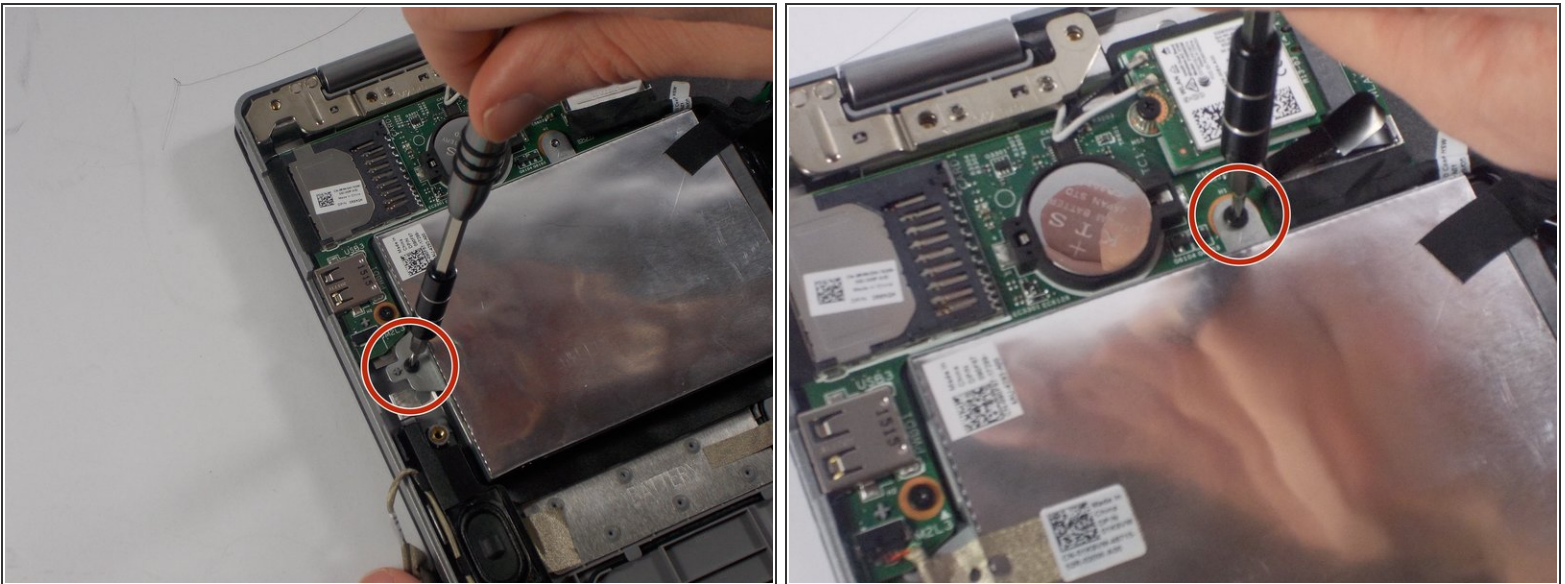
- The Hard Disk Drive is the silver box at the left middle portion on top of the battery.

## Step 9



- Remove the no - fuss ribbon connector which connects the Solid State Drive to the motherboard.
- Pull the two white clips with your fingers to release the connector pins.
- After the pins have been opened, detach the ribbon connector by gently pulling it out from the port.

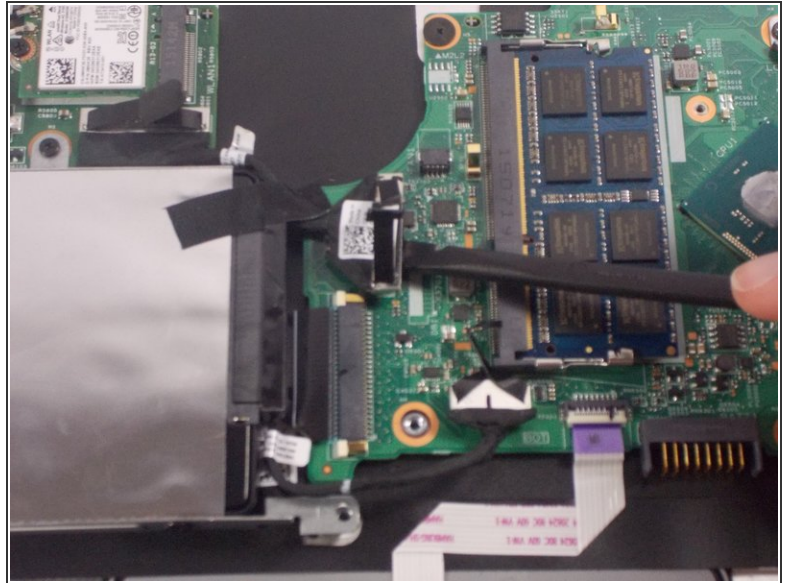
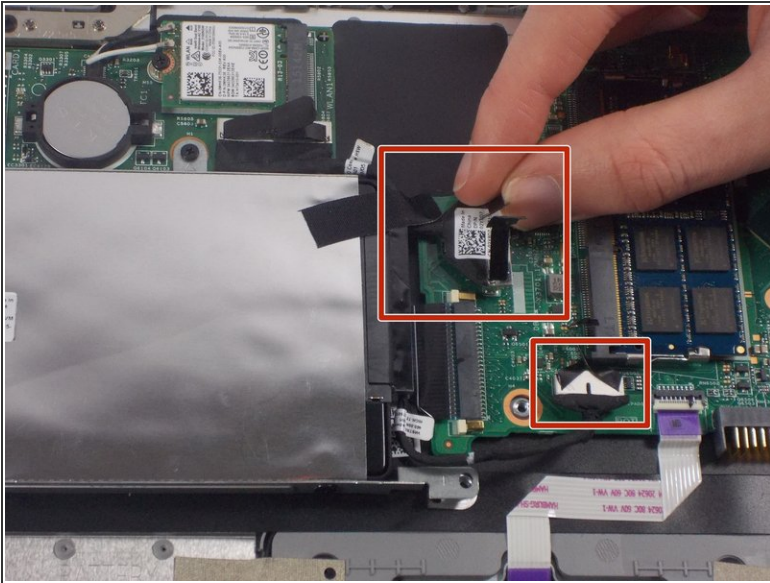
## Step 10



- Remove all three 2mm screws holding down the Solid State Drive by using a #0 Phillips head.



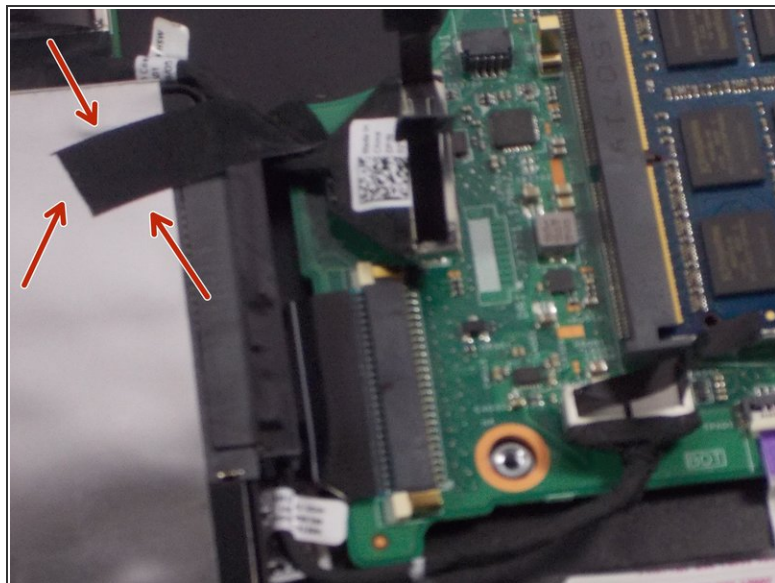
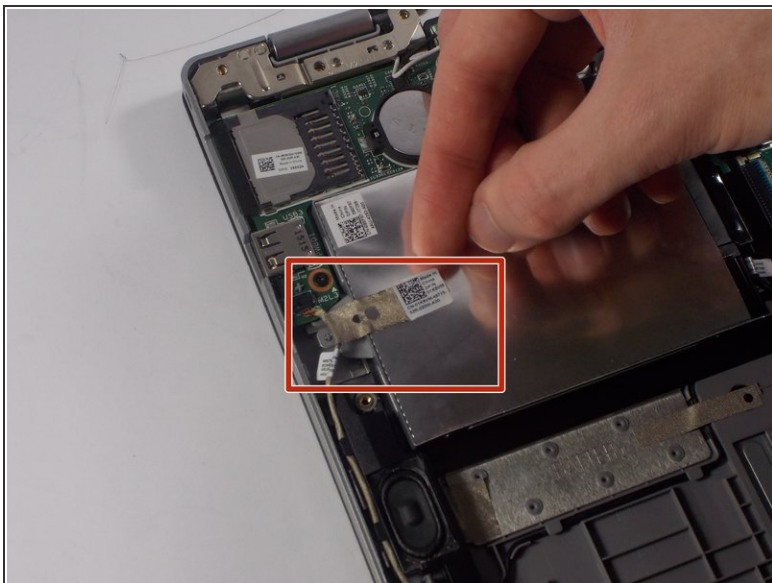
## Step 11



- Remove the two ZIF connectors , which connect Hard Disk Drive to the motherboard.
- Pull apart the black tape on top of the ZIF connector with fingers
- Pull the tape upwards with your fingers to remove the ZIF connector.
- If you are having trouble, use the spudger to pry it up.

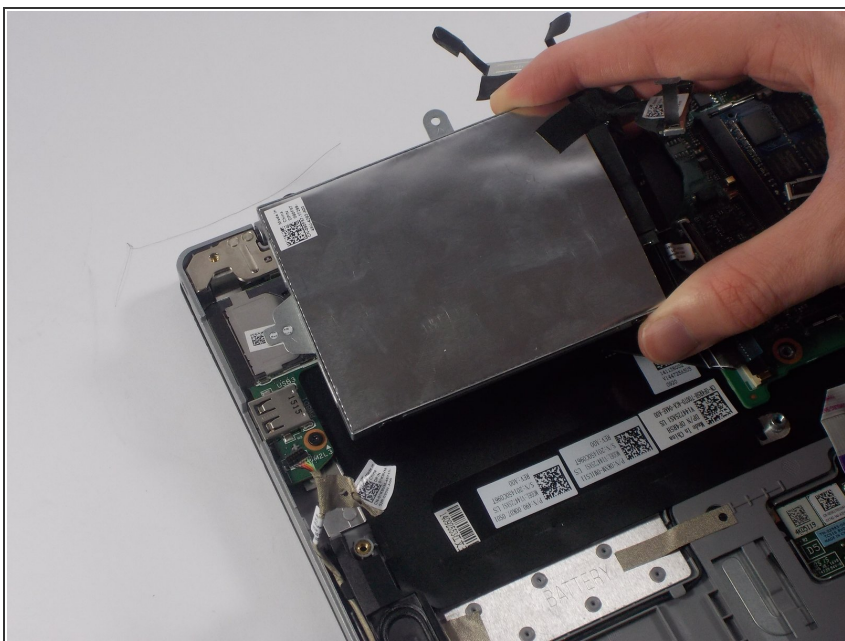


## Step 12



- Remove the tape attached to the Solid State Drive by simply pulling them off with fingers.

## Step 13



- Remove the Solid State Drive by simply lifting it away from the laptop.

To reassemble your device, follow these instructions in reverse order.