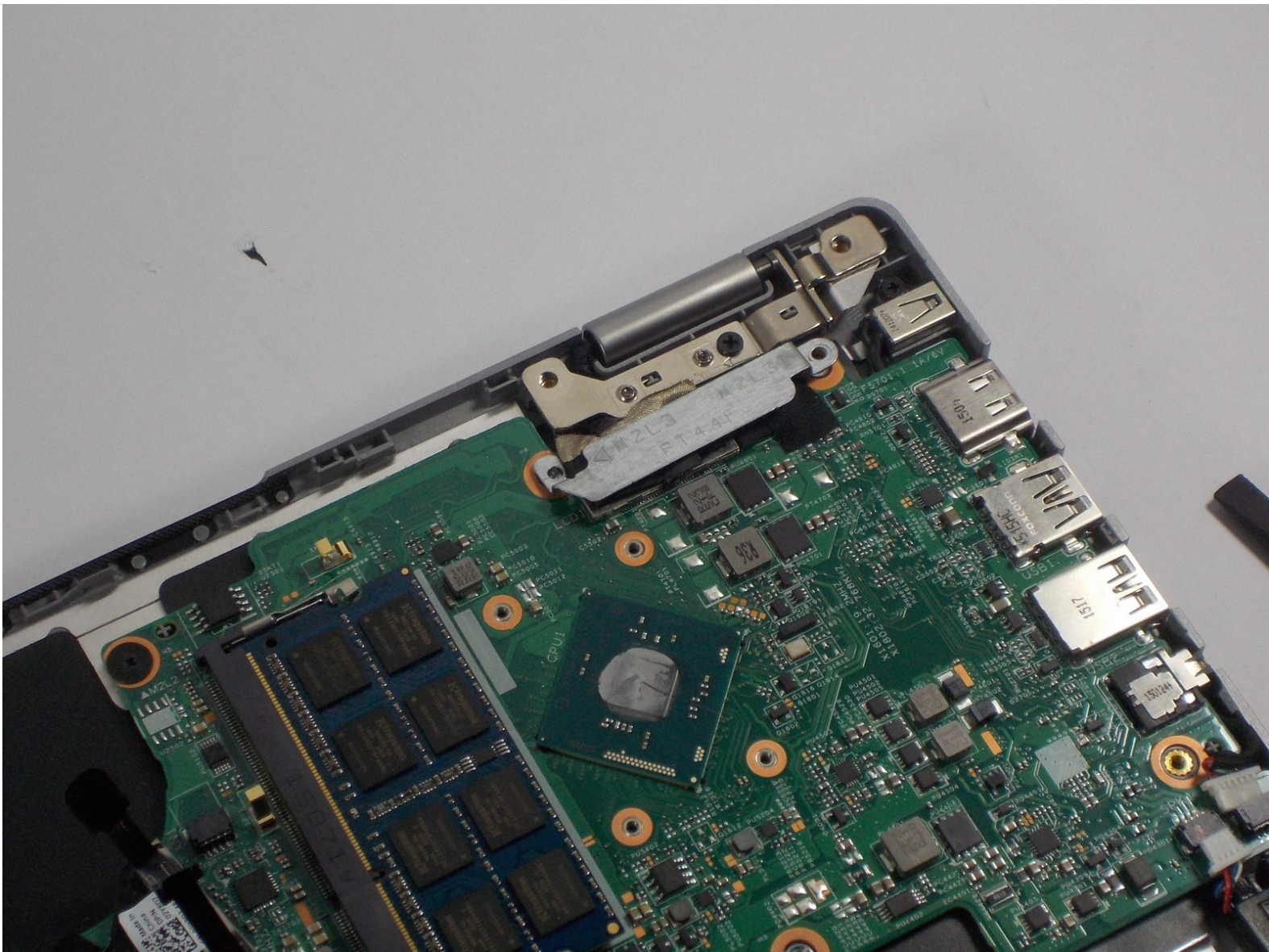




Dell Inspiron 11-3152 USB Port Replacement

This guide will show you how to replace the USB Ports on your Dell Inspiron.

Written By: Matthew Duncan



INTRODUCTION

This guide will show you how to replace the USB Ports on your Dell Inspiron.



TOOLS:

- [Phillips #0 Screwdriver](#) (1)
 - [Spudger](#) (1)
-

Step 1 — Back Panel



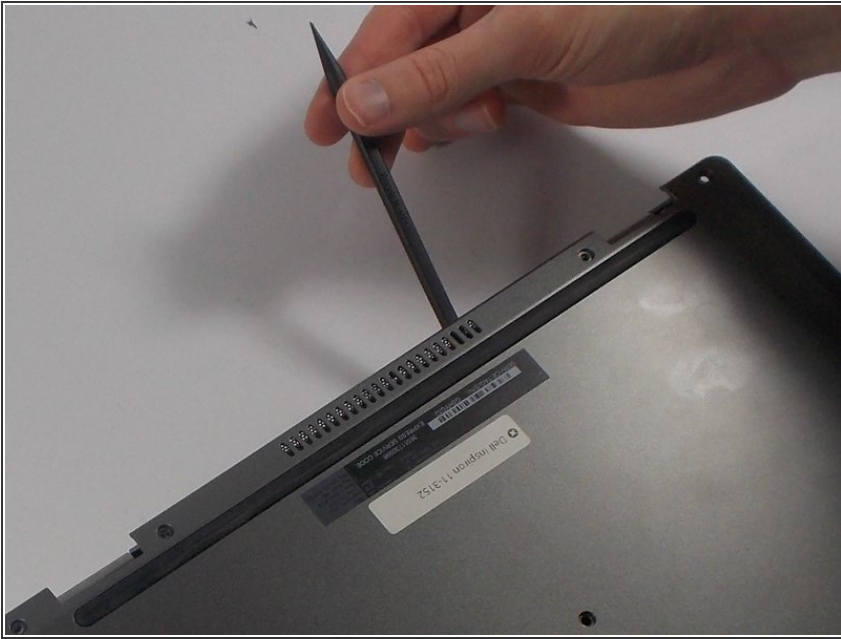
- Flip the computer over.

Step 2



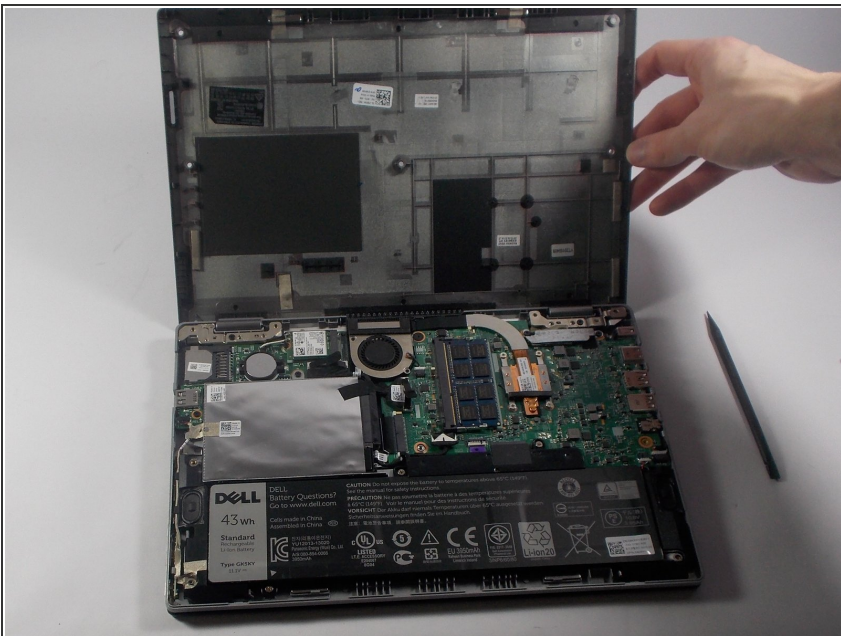
- Remove all nine 5mm Phillips head screws from the back cover using #0 Phillips head.

Step 3



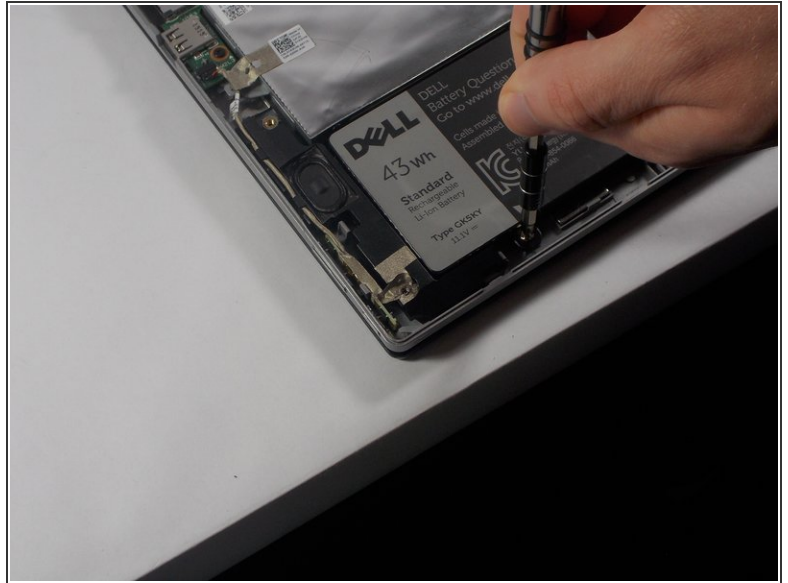
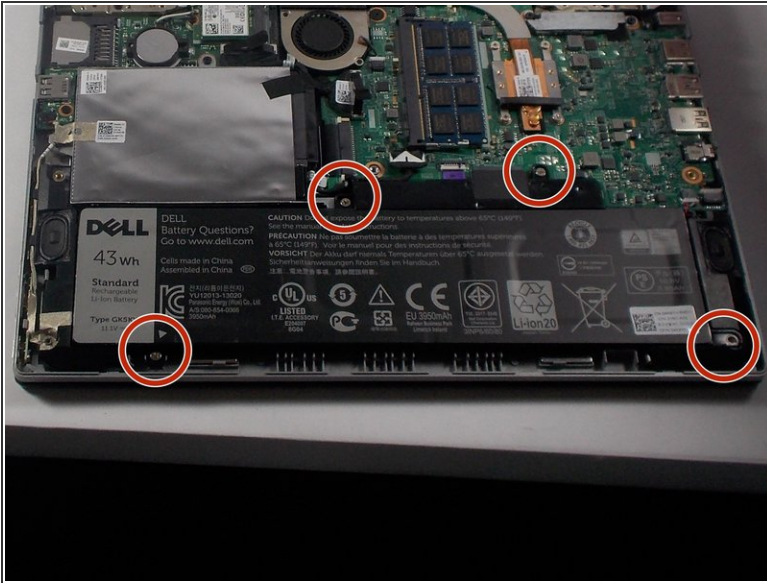
- Gently use a spudger to pull the cover away from the rest of the laptop. The cover will come off after you use the tool on two or three sides.

Step 4 — Battery



- ⚠ Make sure that the power is off.
- After taking off the back panel, you will see the battery located at the bottom of the computer system. It's black and is clearly labeled "dell battery".

Step 5



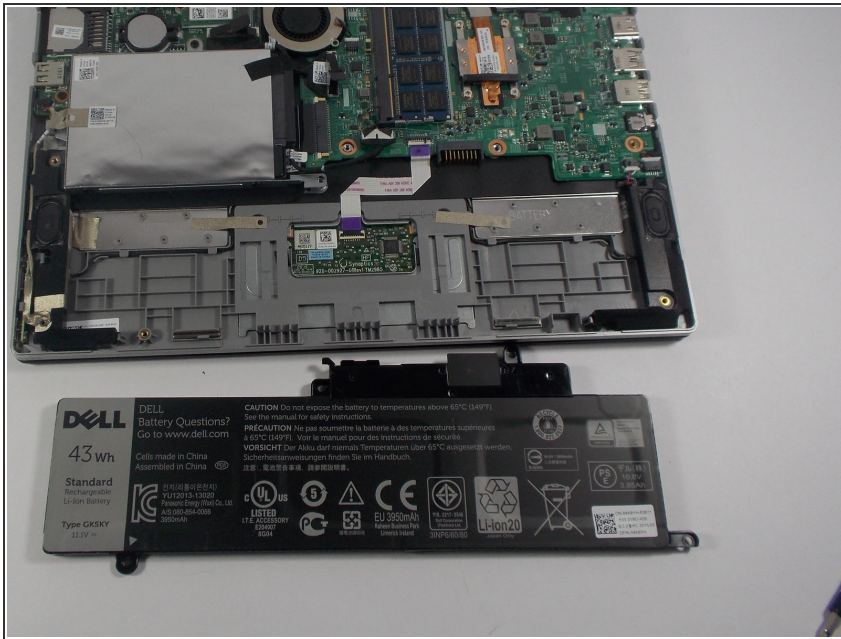
- Locate the battery at the bottom of the computer and remove the four 3mm screws with a Phillips #0 head that hold the battery down.

Step 6



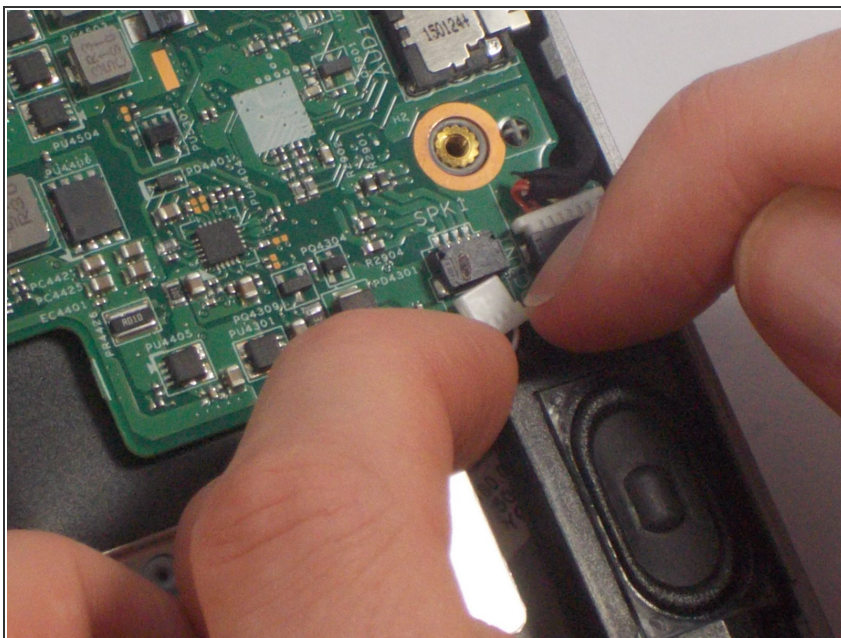
- Remove the Solid State Drive wire from the battery clip by detaching the wire.
- This can be done by gently pulling the connector away from the battery clip.

Step 7



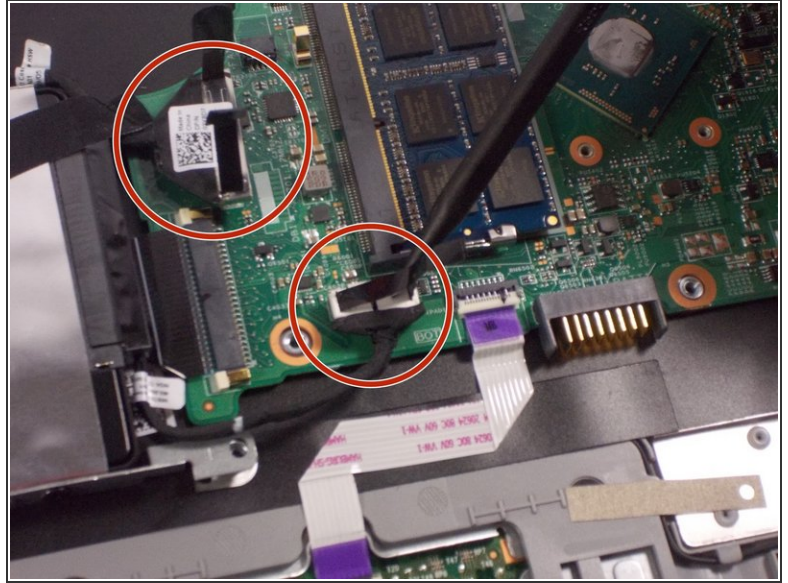
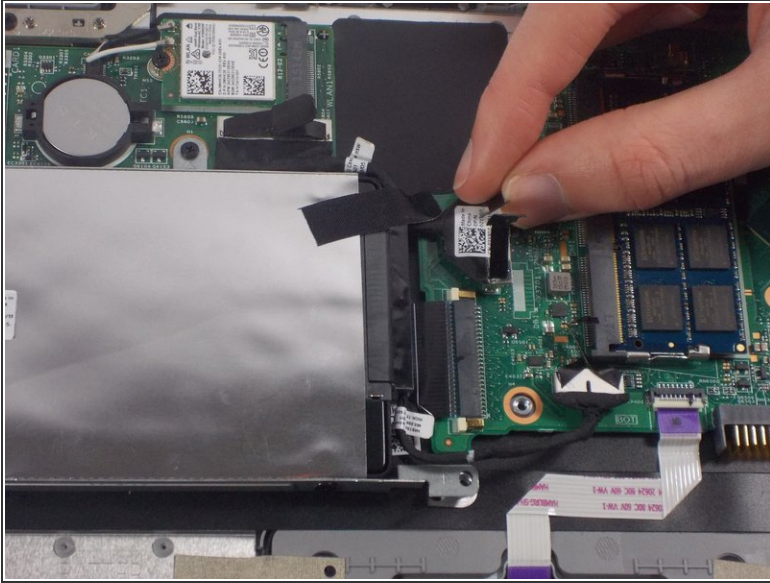
- Remove the battery from the computer system by gently lifting it from the side.

Step 8 — USB Port



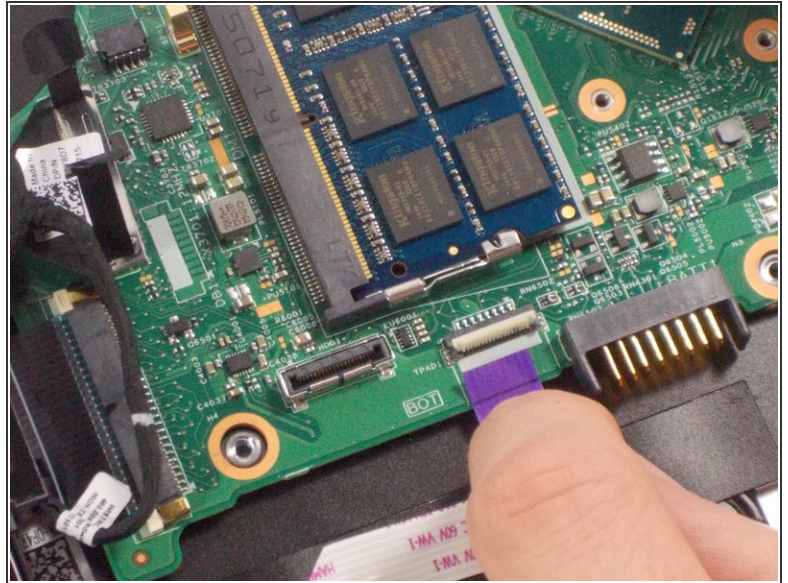
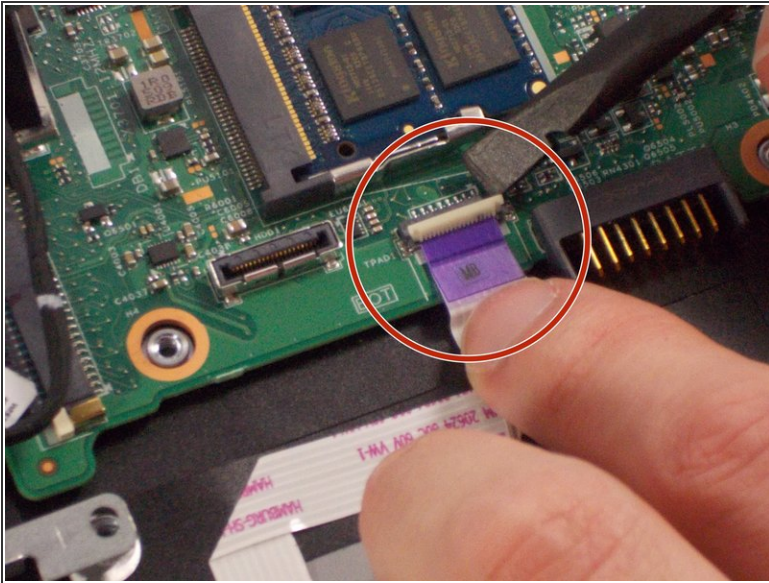
- Remove the two white power connectors on the bottom right of the motherboard by gently pulling on the tabs backward.

Step 9



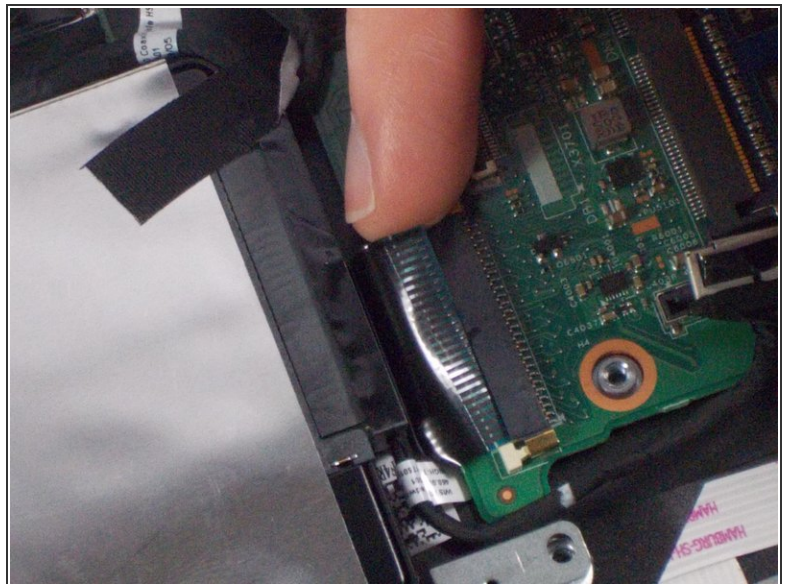
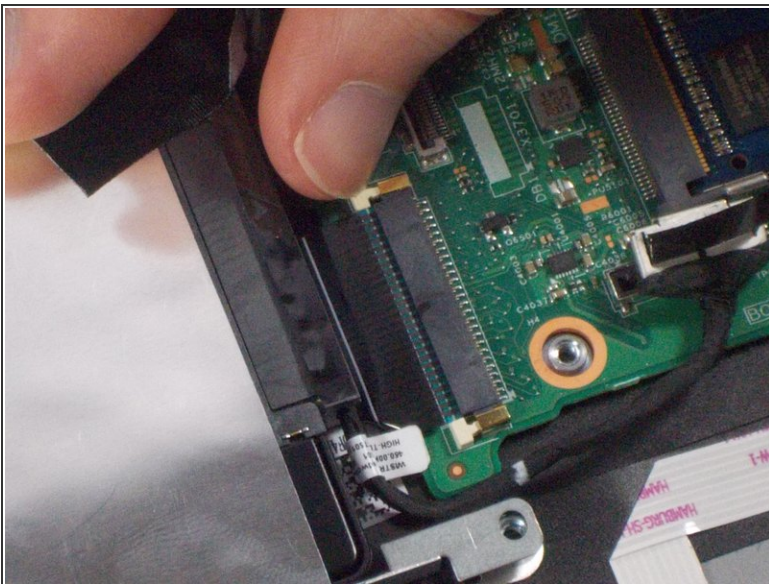
- Gently peel the tape on top of the power connectors that link the Solid State Drive to the motherboard.
- Use spudger to lift and detach the power connector from the motherboard.

Step 10



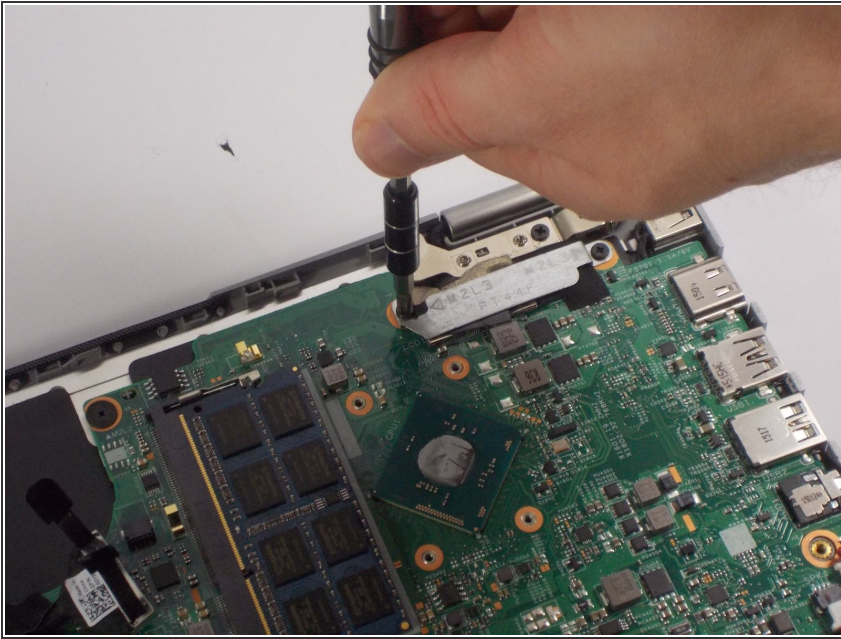
- Detach the purple ZIF connector and the white ribbon connector. This can be done by using a spudger to unlock the ZIF connector and pull the cable out.
- Pull the ribbon cable that connects the keyboard to the motherboard away.

Step 11



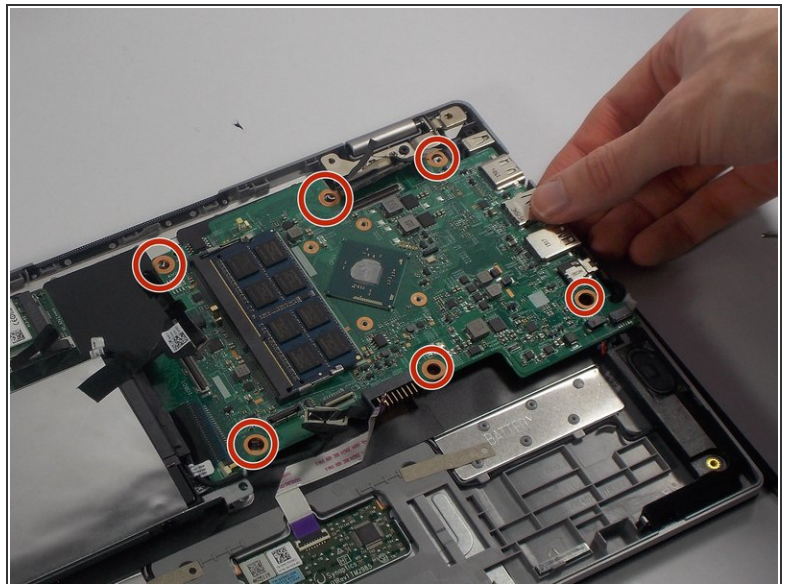
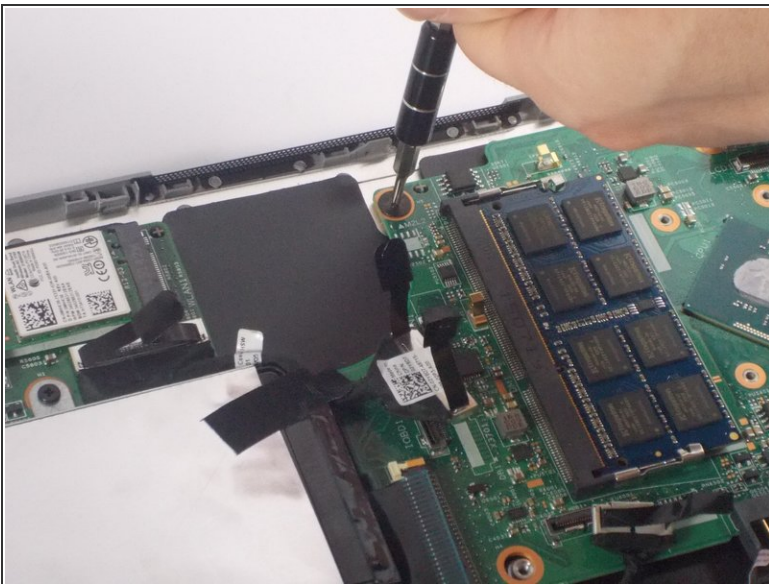
- Slide the ZIF cord connecting to the Solid State Drive towards itself to detach it from the motherboard.

Step 12



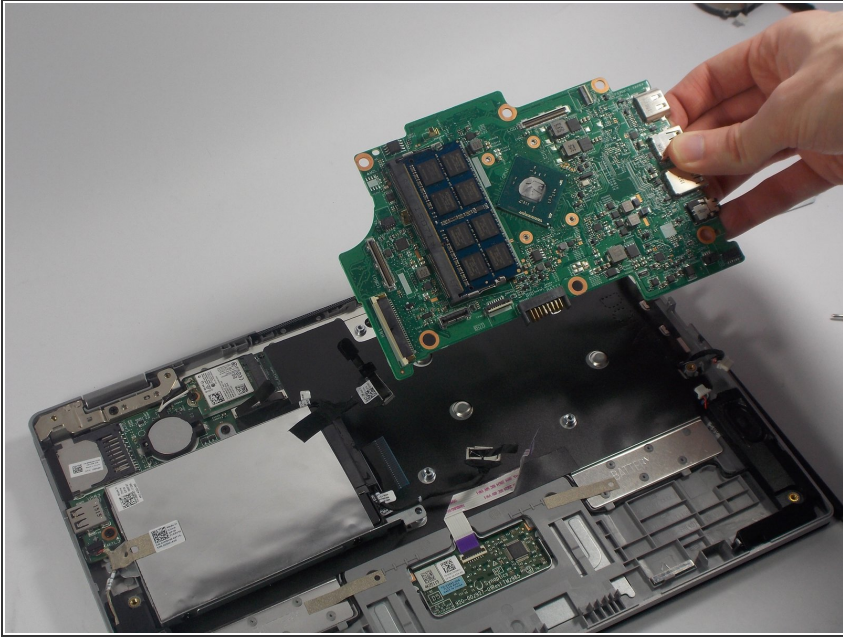
- Unscrew the two 2mm screws on the silver brace in the top right of the laptop using a #0 Phillips head.

Step 13



- Unscrew six 1mm screws holding down the motherboard using a #0 Phillips head.

Step 14



- Lift up the motherboard.

To reassemble your device, follow these instructions in reverse order.