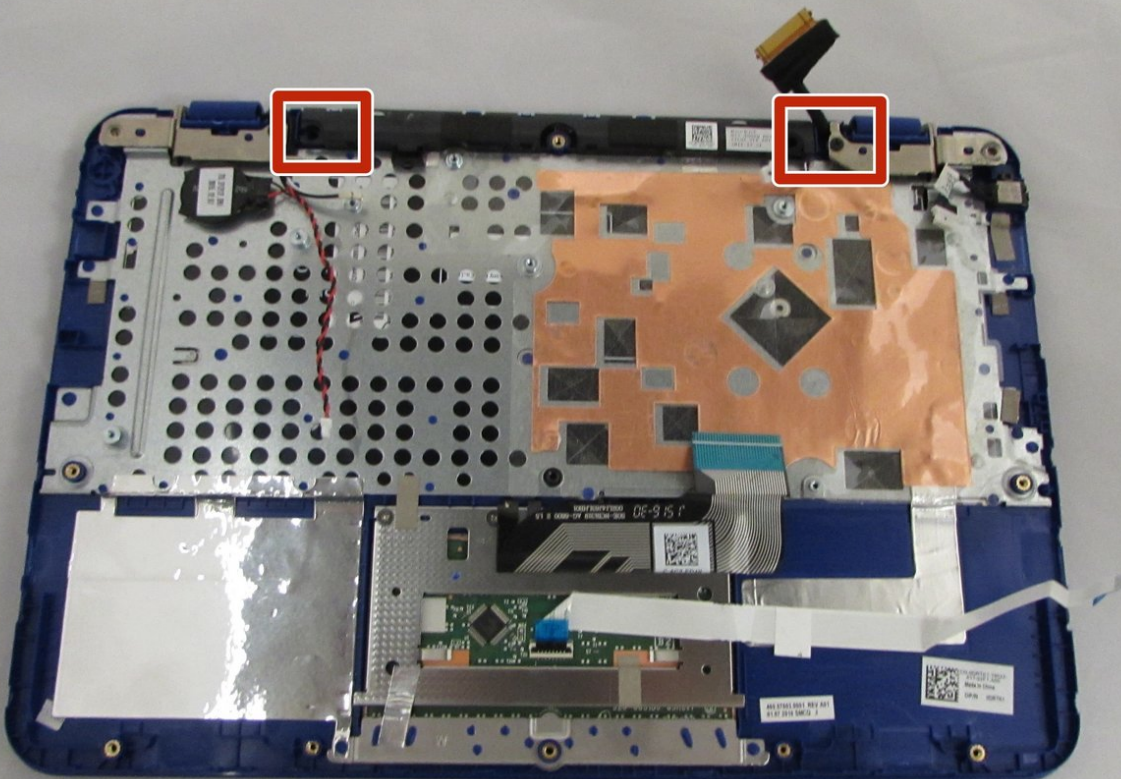




Dell Inspiron 11-3162 LCD Screen Replacement

This guide will teach you how to replace the LCD screen on a Dell Inspiron 11-3162

Written By: Jared Johnson



INTRODUCTION

This guide will tell you how to replace your LCD screen. When working with screens, be careful about electrical discharges, and take steps to assure that the battery is disconnected for awhile before you follow this guide.

TOOLS:

- [Phillips PH000 Screwdriver](#) (1)
 - [Tweezers](#) (1)
 - [Heavy-Duty Spudger](#) (1)
 - [phillips Screwdriver PH00](#) (1)
-

Step 1 — Back Cover Removal



- Remove the screw cover by using tweezers.

Step 2



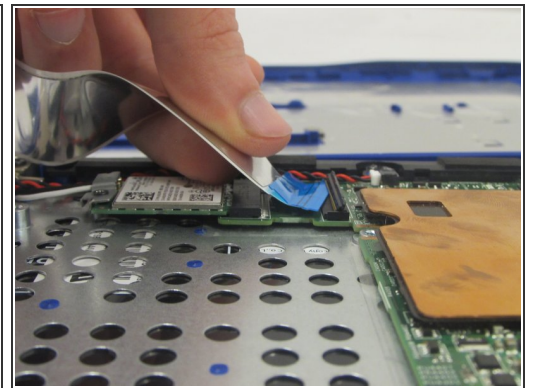
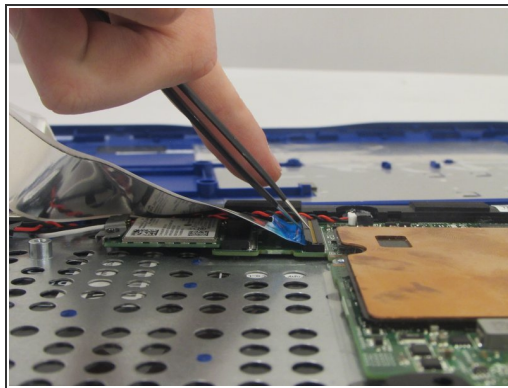
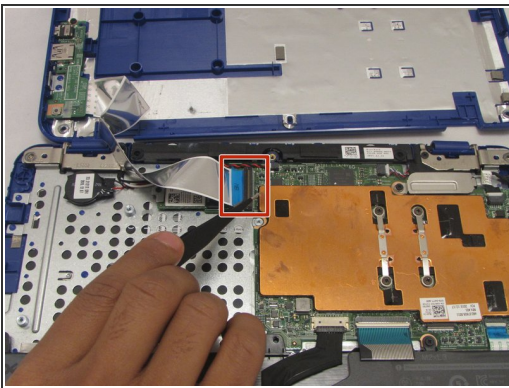
- Using the Phillips screw head (PH00), unscrew the 9 6.8mm Phillips screws.

Step 3



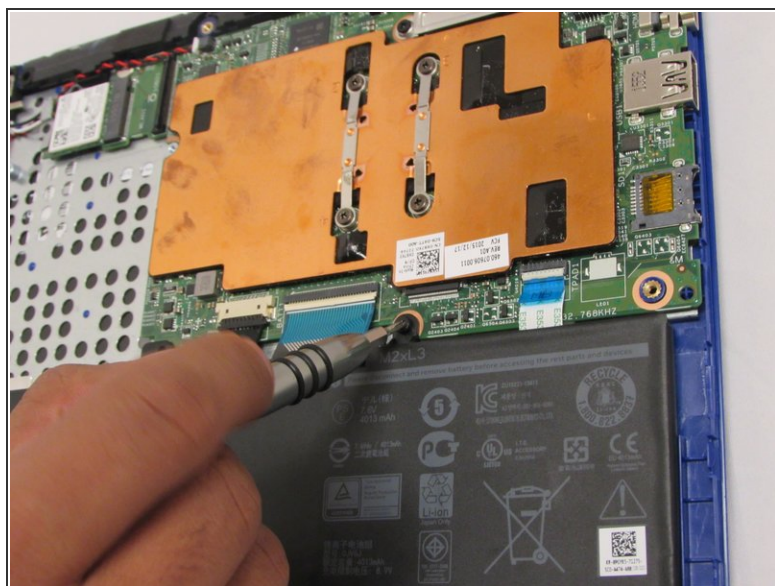
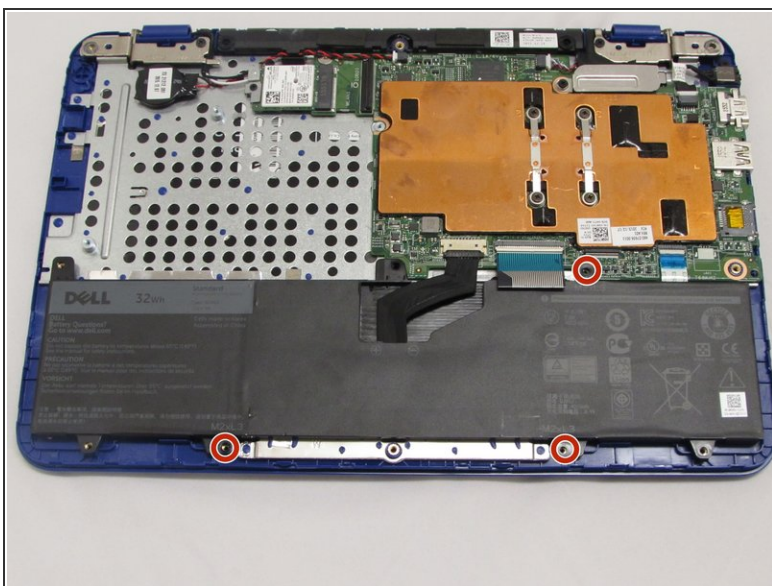
- Use the regular black nylon spudger tool to pry around the base edges of the back cover and remove it.

Step 4



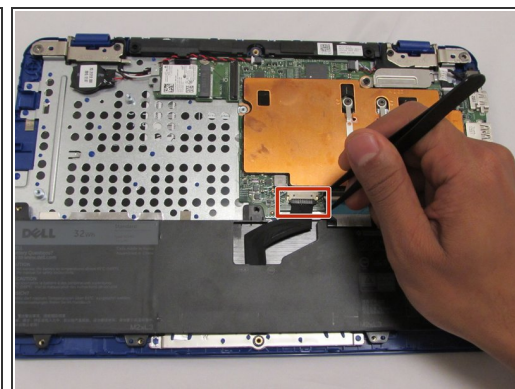
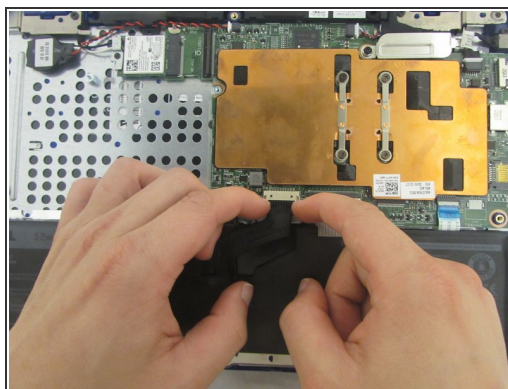
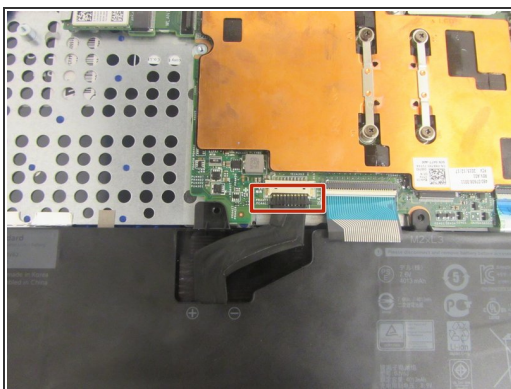
- Gently pull upwards on the latch with tweezers
- When you've flipped the latch open, pull the ribbon cable outwards to disconnect the back cover from the motherboard.

Step 5 — Battery



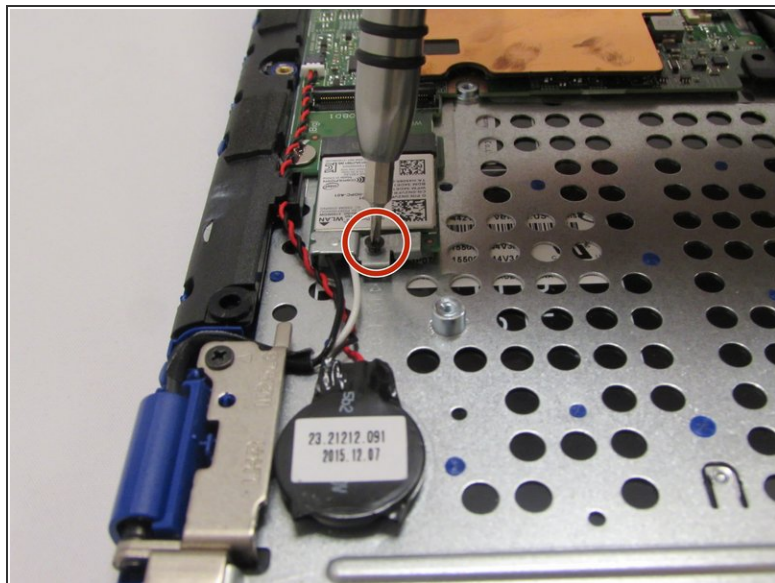
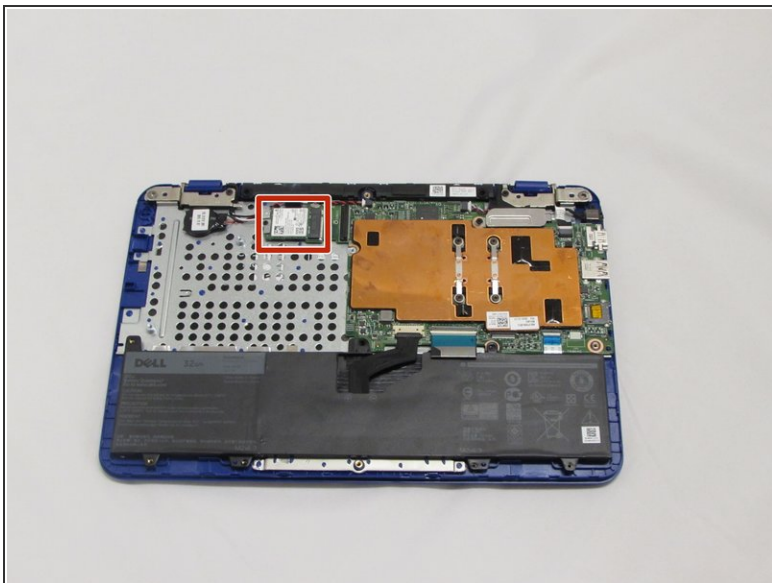
- Using the phillips head (PH0) screwdriver, unscrew the 3 4mm screws.

Step 6



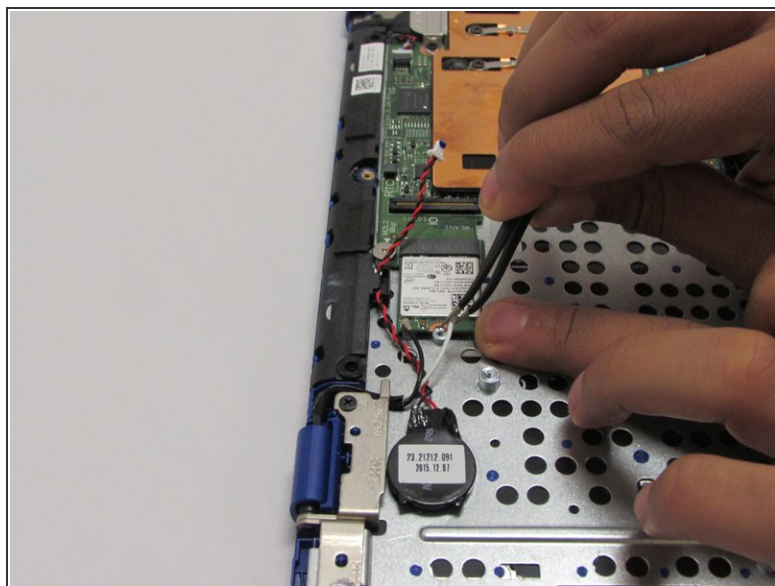
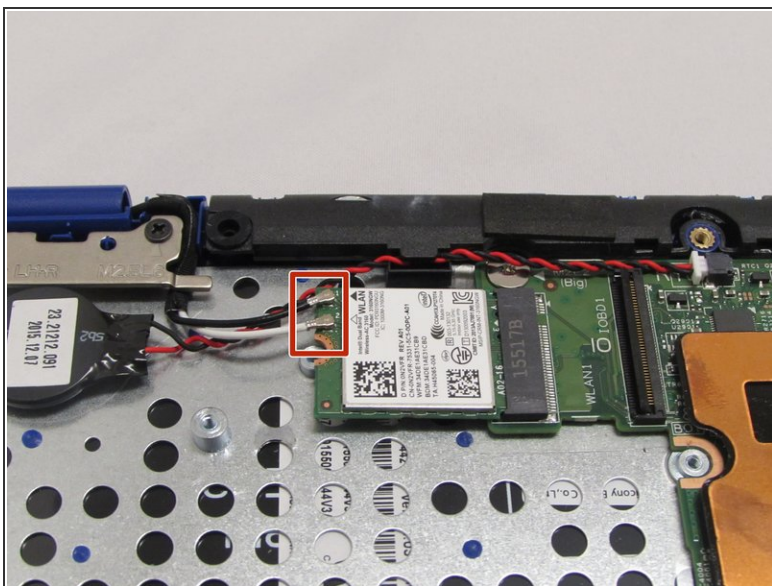
- Use your fingers (or a set of tweezers) to remove the battery cable, pulling gently from the sides of the connector.

Step 7 — Wireless WLAN Card



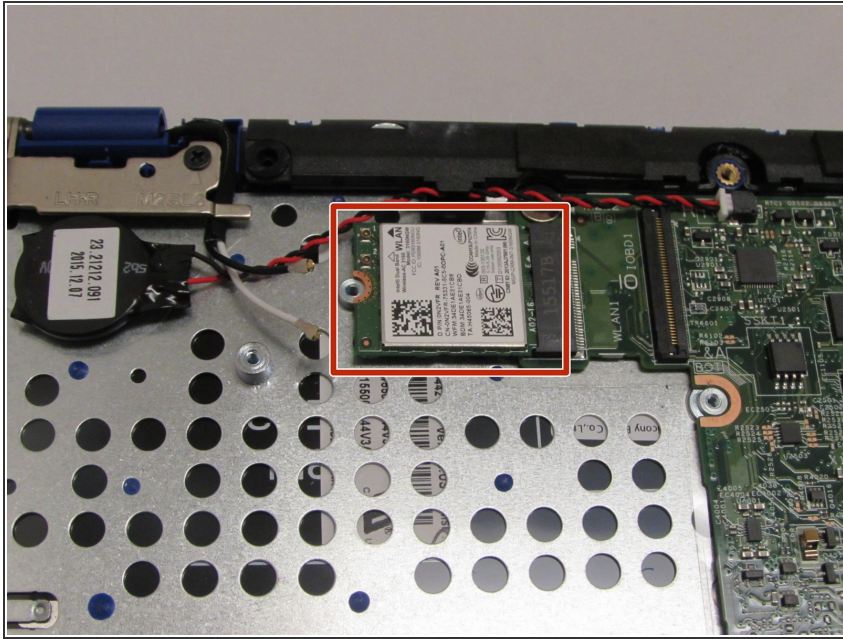
- Use the Phillips screwdriver with the PH000 head to unscrew the 3.8mm screw.

Step 8



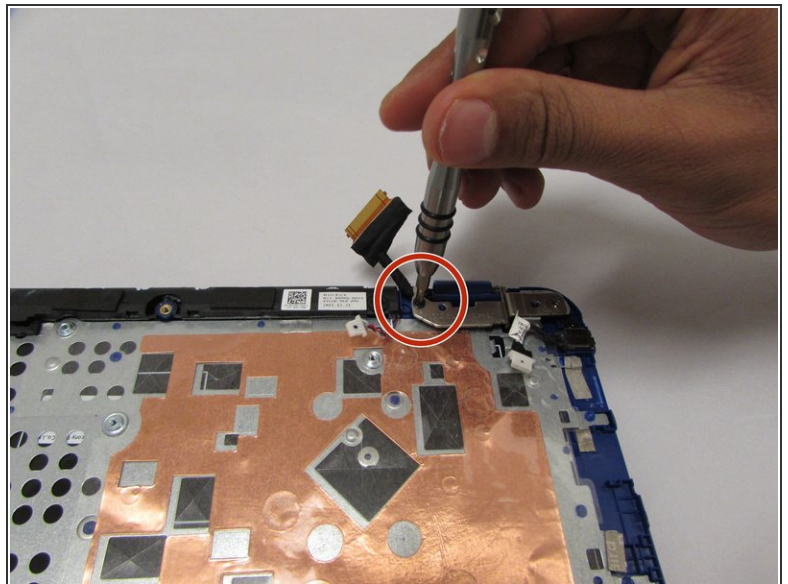
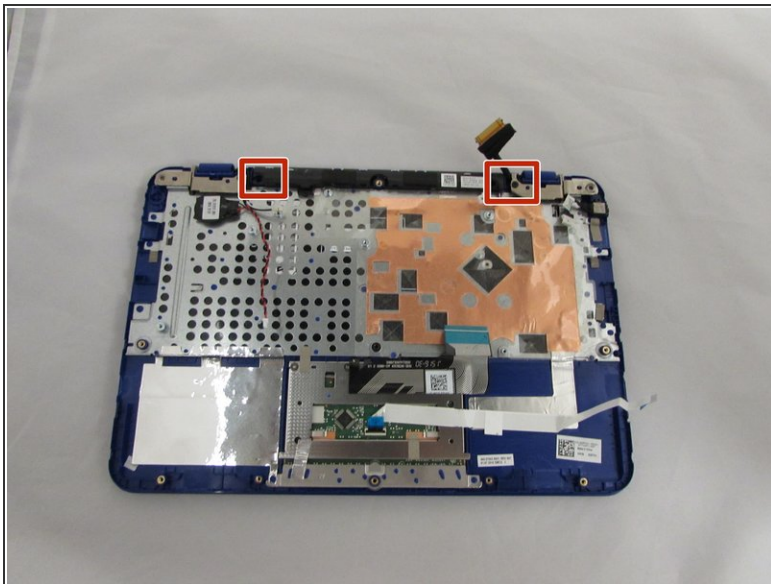
- Using the tweezers, pull the white and black wires off of the WiFi Chip.

Step 9



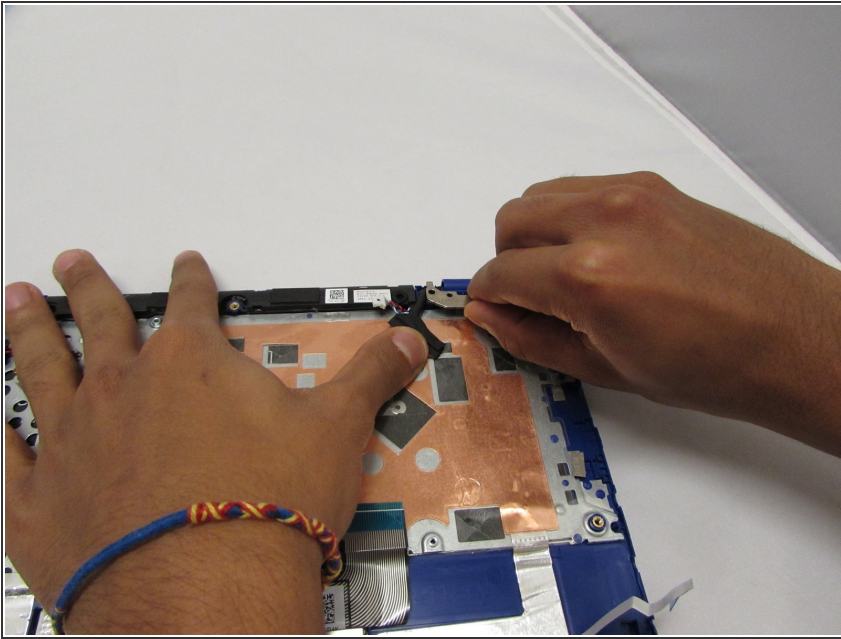
- Pull out the WiFi Chip.

Step 10 — LCD Screen



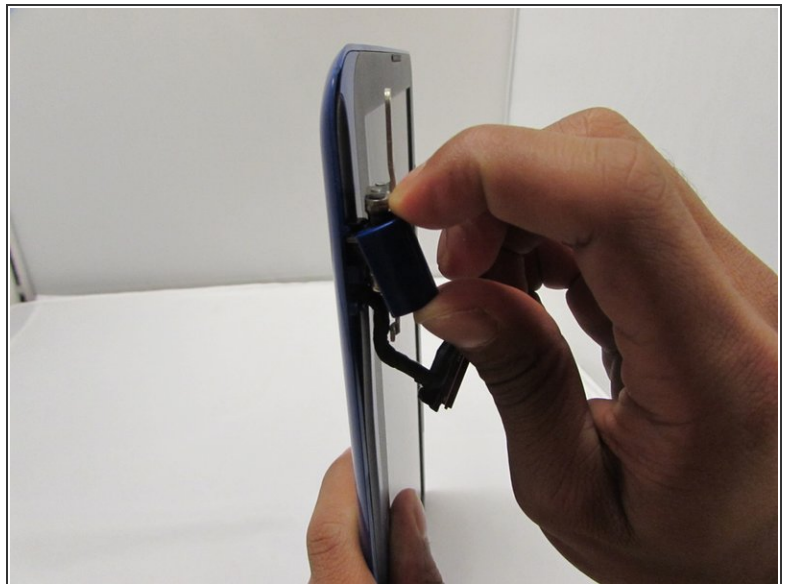
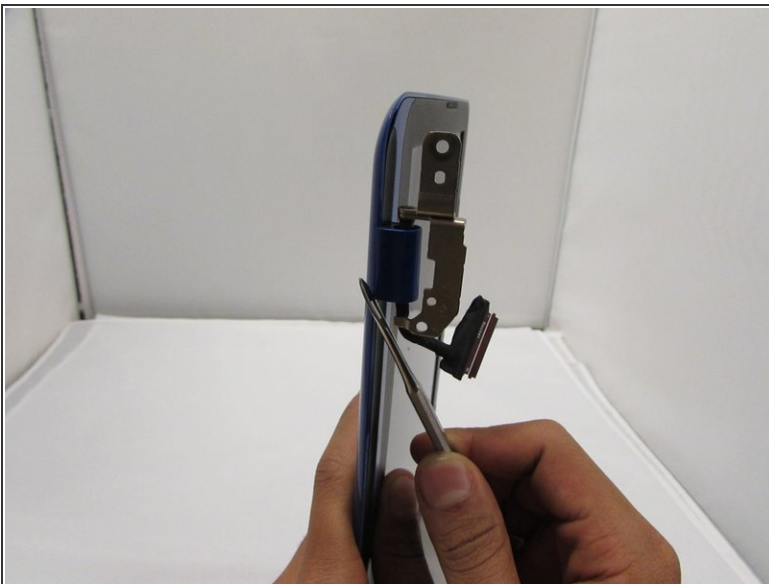
- Remove the two screws that hold down the LCD hinges.

Step 11



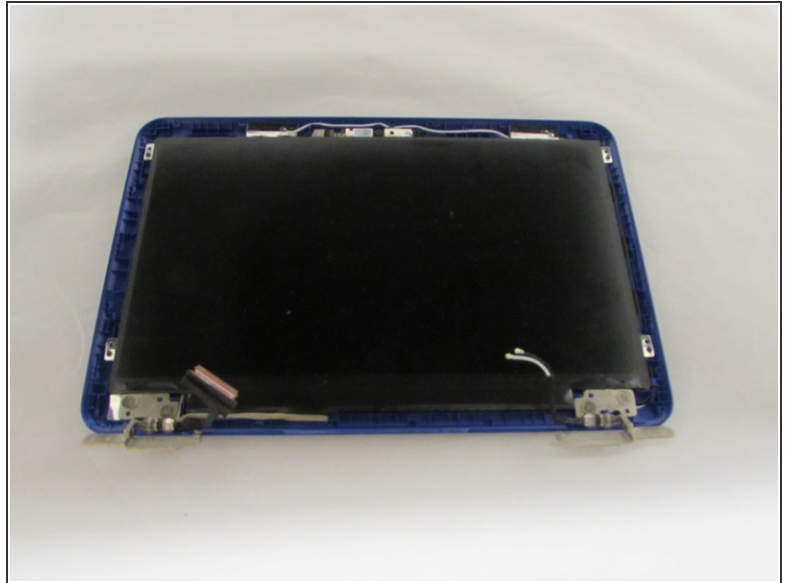
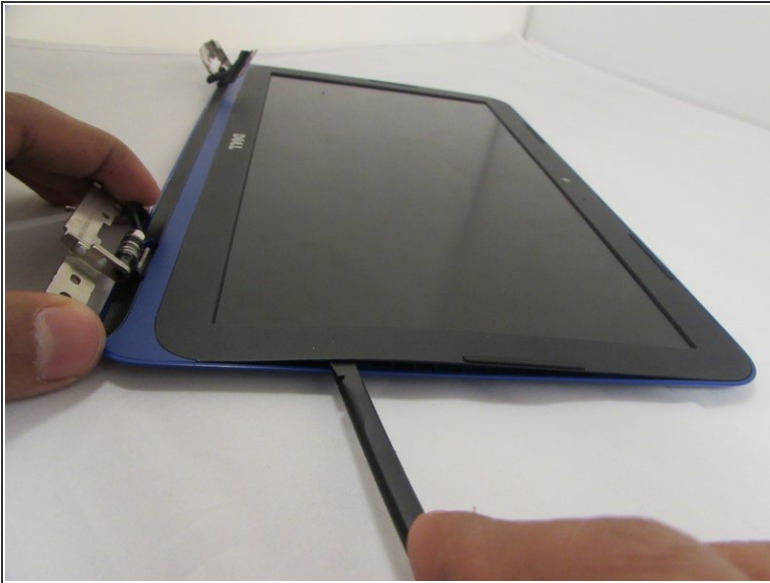
- Pull the hinges back and remove the screen.

Step 12



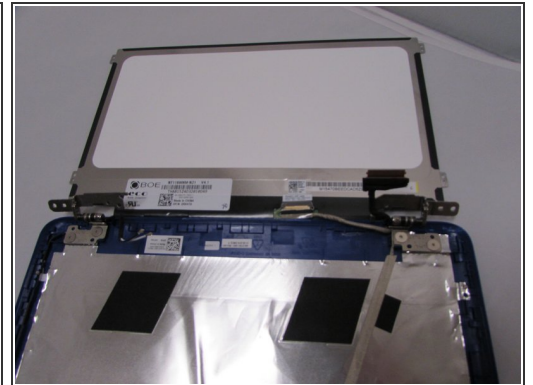
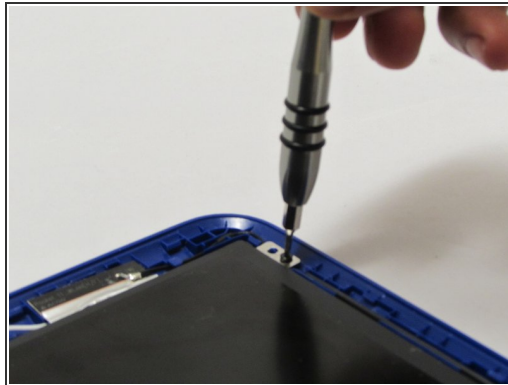
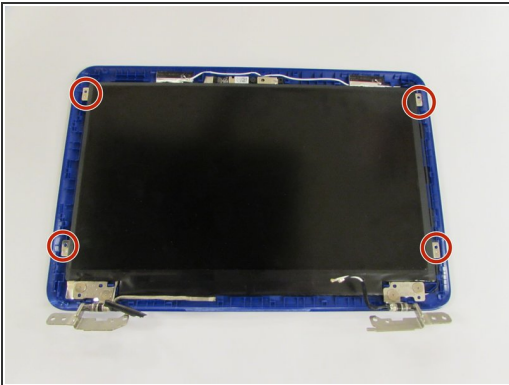
- Remove the hinge covers with your spudger tool.

Step 13



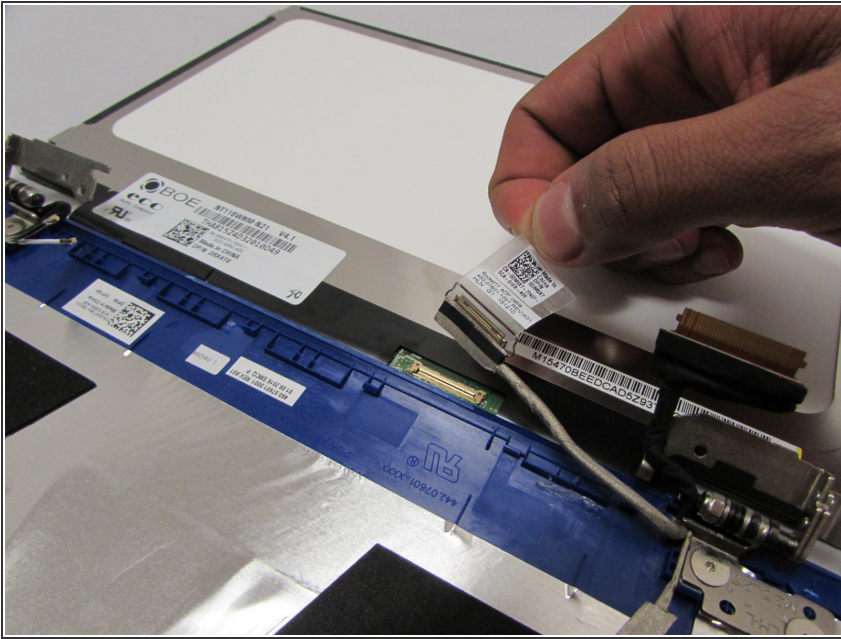
- Carefully remove the LCD Bezel with your regular black nylon spudger tool by bringing it all the way around the outer edges of your screen.

Step 14



- Remove the four screws with a PH00 sized bit.
- Flip the screen over.

Step 15



- Loosen the tape, and remove the LCD Cable.
- Remove the screen.

To reassemble your device, follow these instructions in reverse order.