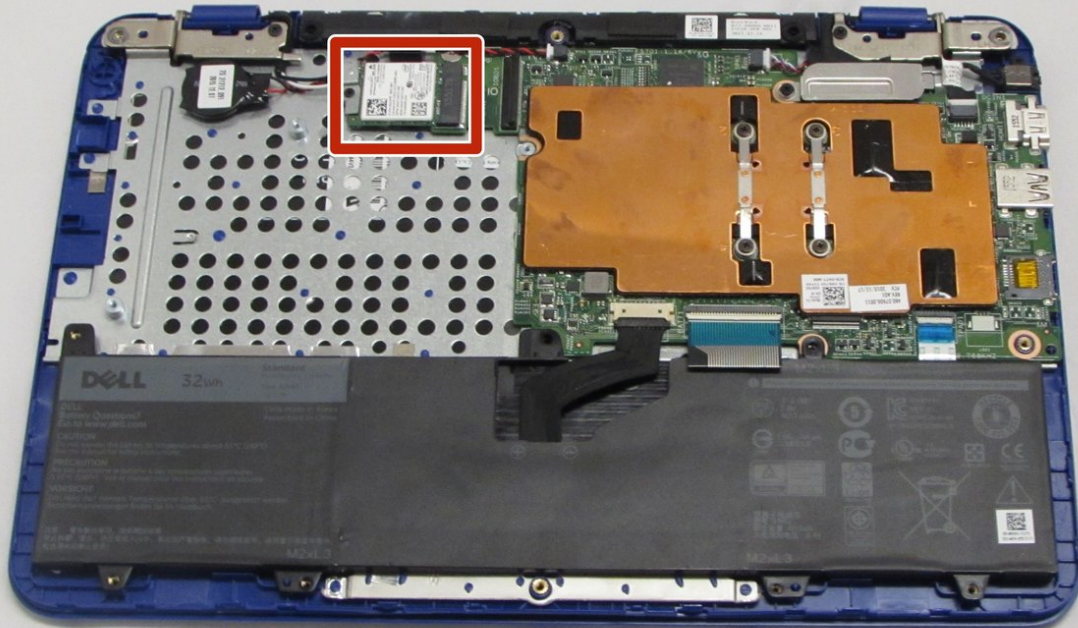




Dell Inspiron 11-3162 Wireless WLAN Card Replacement

In this guide you will be able to replace you wireless card.

Written By: Dominic DeLong



INTRODUCTION

If you clicked this link from the troubleshooting guide, follow these steps to help get your wireless back up and running.

TOOLS:

- [64 Bit Driver Kit](#) (1)
 - [Tweezers](#) (1)
 - [Heavy-Duty Spudger](#) (1)
 - [Phillips #000 Screwdriver](#) (1)
 - [Phillips #00 Screwdriver](#) (1)
-

Step 1 — Back Cover Removal



- Remove the screw cover by using tweezers.

Step 2



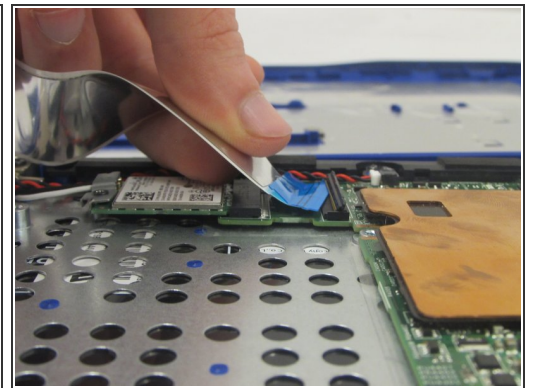
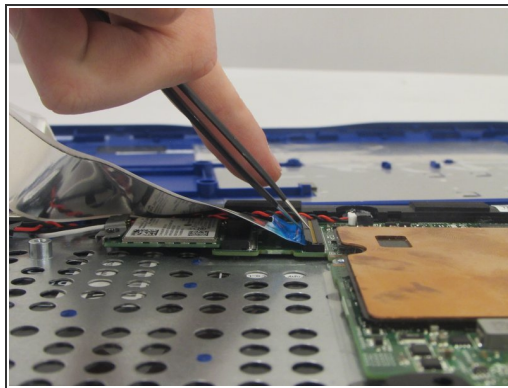
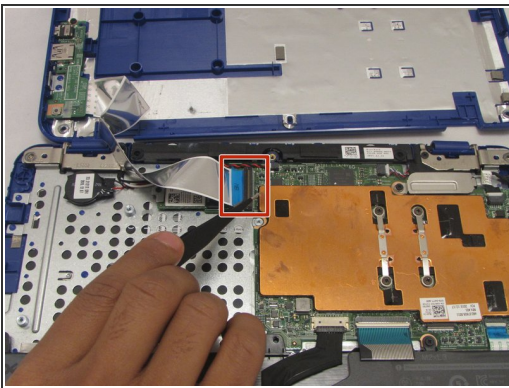
- Using the phillips screw head (PH00), unscrew the 9 6.8mm philip screws.

Step 3



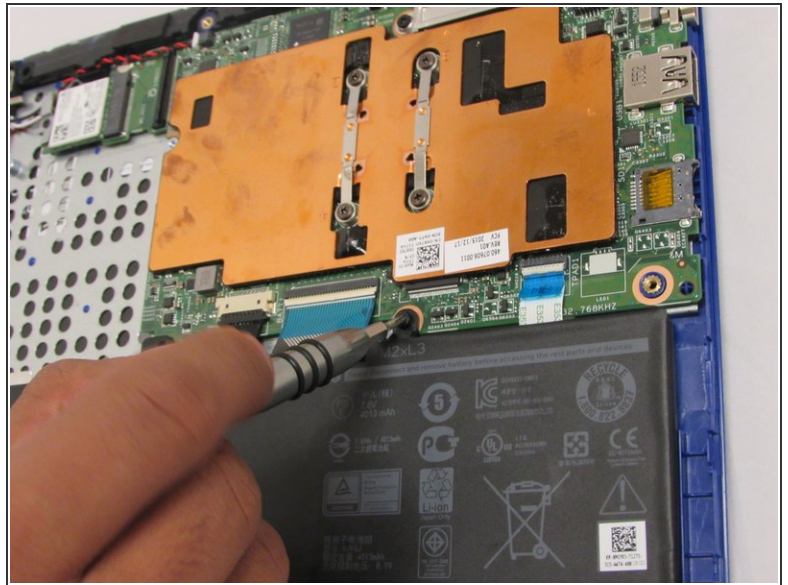
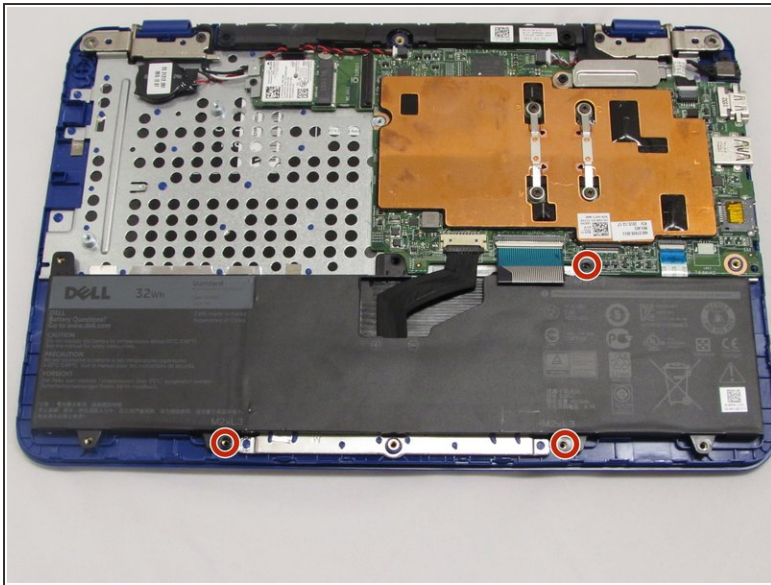
- Use the regular black nylon spudger tool to pry around the base edges of the back cover and remove it.

Step 4



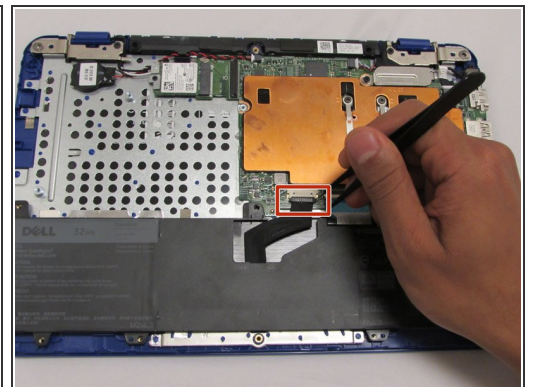
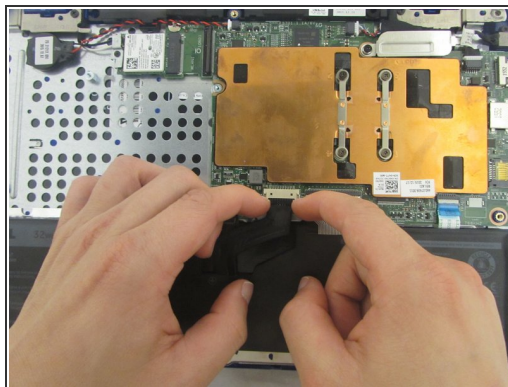
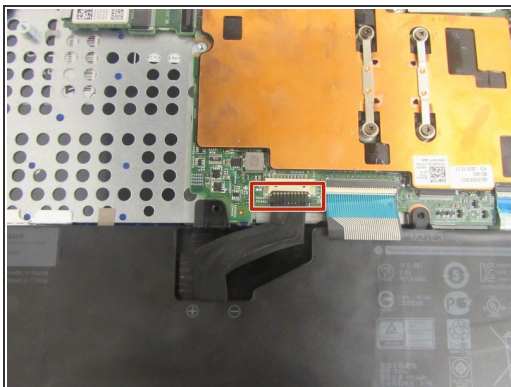
- Gently pull upwards on the latch with tweezers
- When you've flipped the latch open, pull the ribbon cable outwards to disconnect the back cover from the motherboard.

Step 5 — Battery



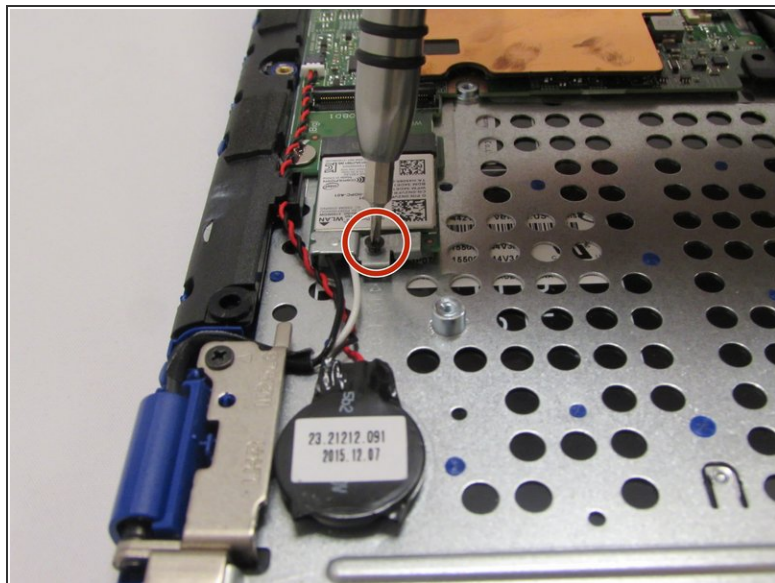
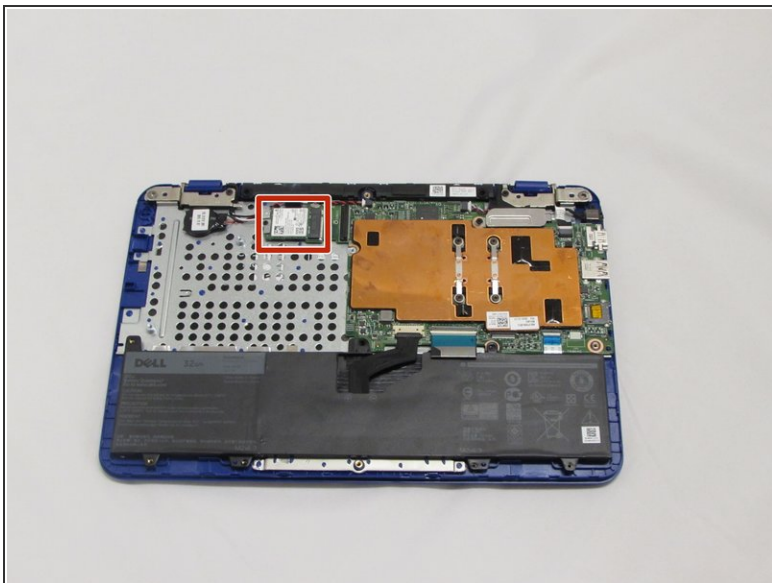
- Using the phillips head (PH0) screwdriver, unscrew the 3 4mm screws.

Step 6



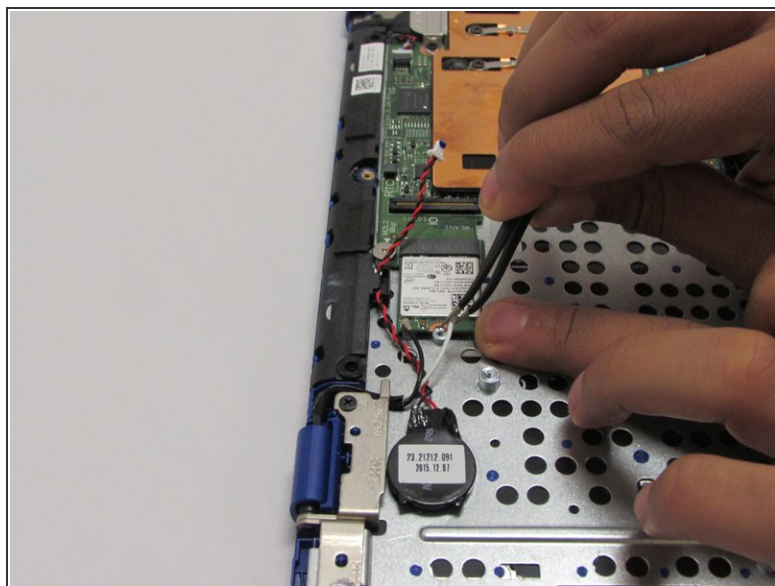
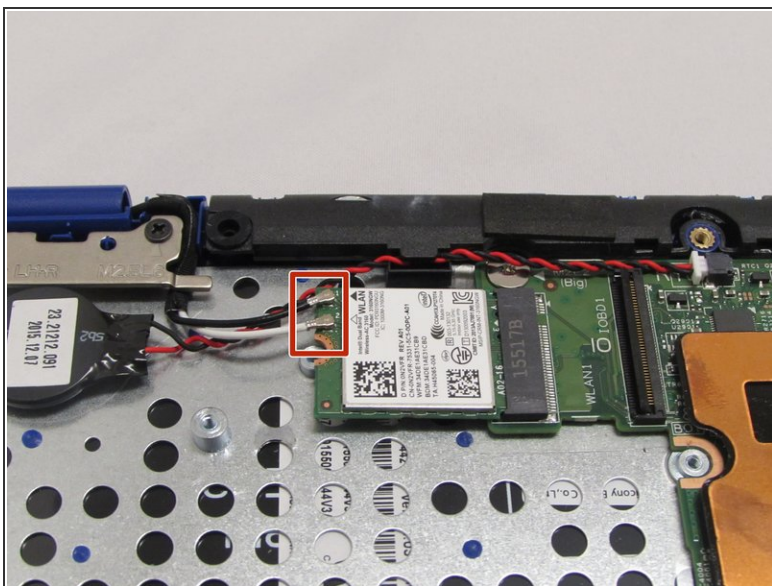
- Use your fingers (or a set of tweezers) to remove the battery cable, pulling gently from the sides of the connector.

Step 7 — Wireless WLAN Card



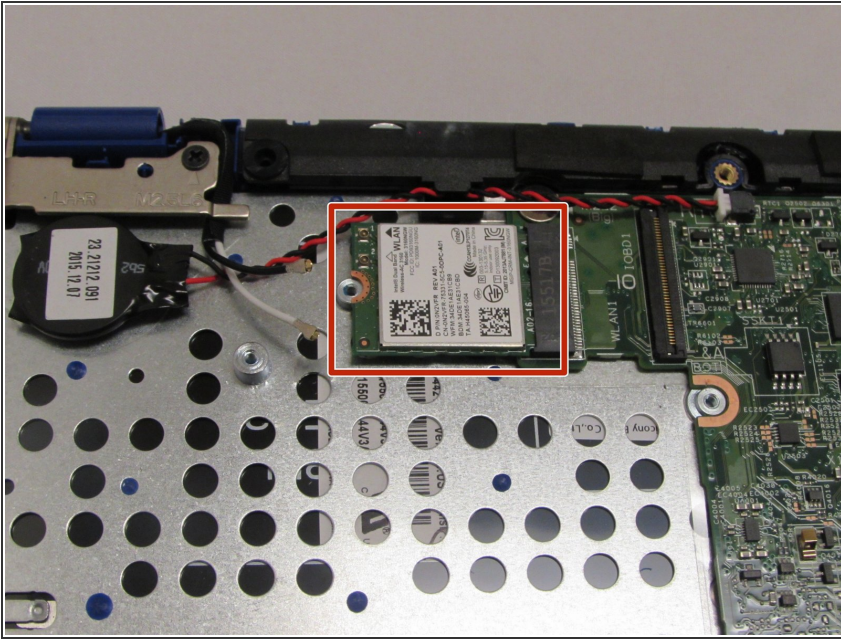
- Use the phillips screwdriver with the PH000 head to unscrew the 3.8mm screw.

Step 8



- Using the tweezers, pull the white and black wires off of the WiFi Chip.

Step 9



- Pull out the WiFi Chip.

To reassemble your device, follow these instructions in reverse order.