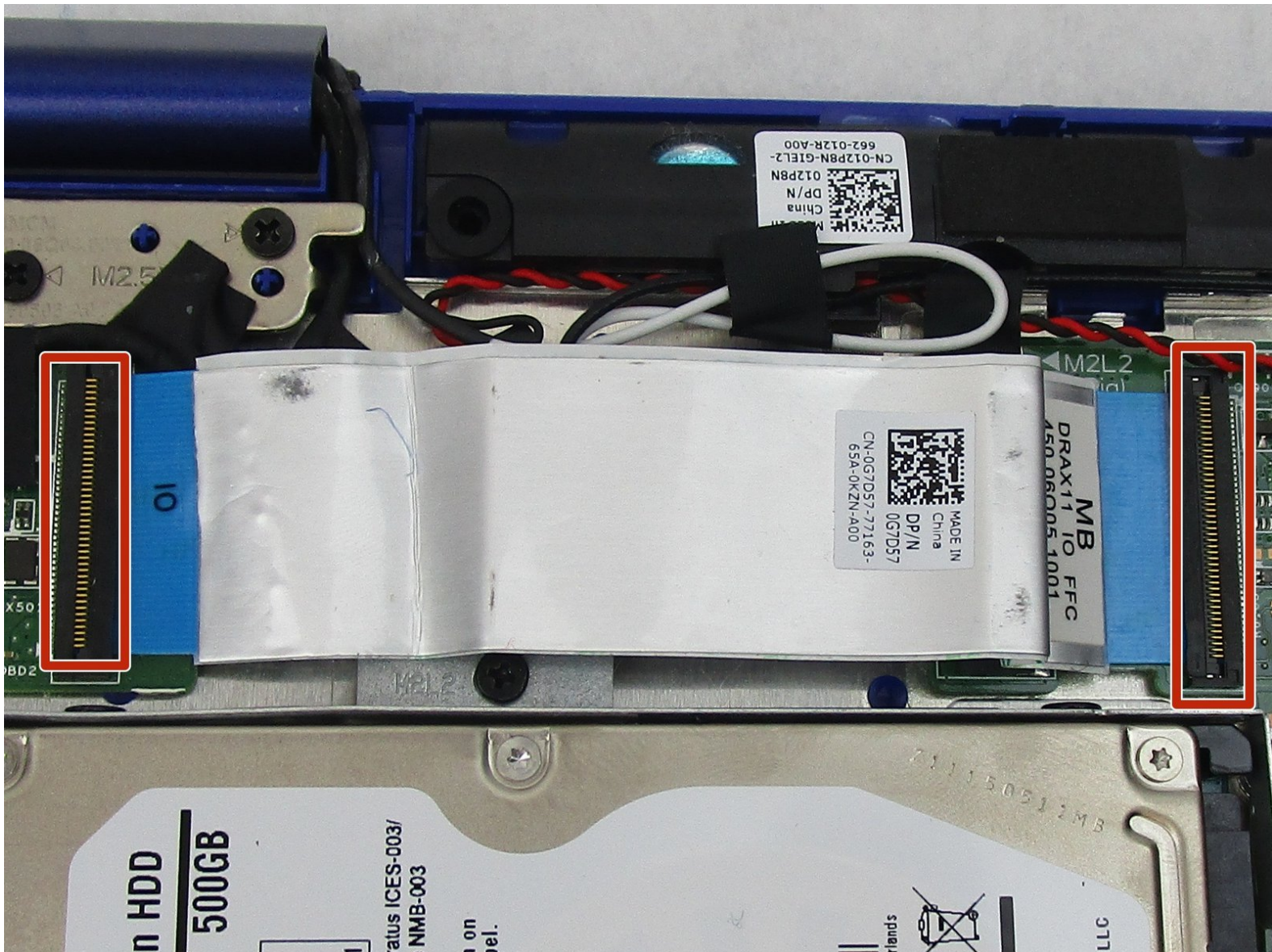




# Dell Inspiron 11-3168 Wifi module Replacement

How to replace WiFi module in Dell Inspiron 11-3168.

Written By: Matthew Roomsburg



## INTRODUCTION

This guide will show you how to replace the WiFi module on your Dell Inspiron 11-3168. Note: There is one small screw that may be difficult to grip with your fingers. Before starting, make sure both the laptop AC adapter and battery are disconnected prior to replacing any part or component.



### TOOLS:

- [Phillips #00 Screwdriver](#) (1)
- [iFixit Opening Tools](#) (1)



### PARTS:

- [Dell Inspiron 11-3168 WiFi WLAN card](#) (1)

## Step 1 — Battery



- Using a Phillips #00 screwdriver, remove all nine 7.5mm screws from the bottom case of the laptop.

## Step 2



- Remove the bottom case of the laptop by gently prying along the seam with a plastic opening tool.

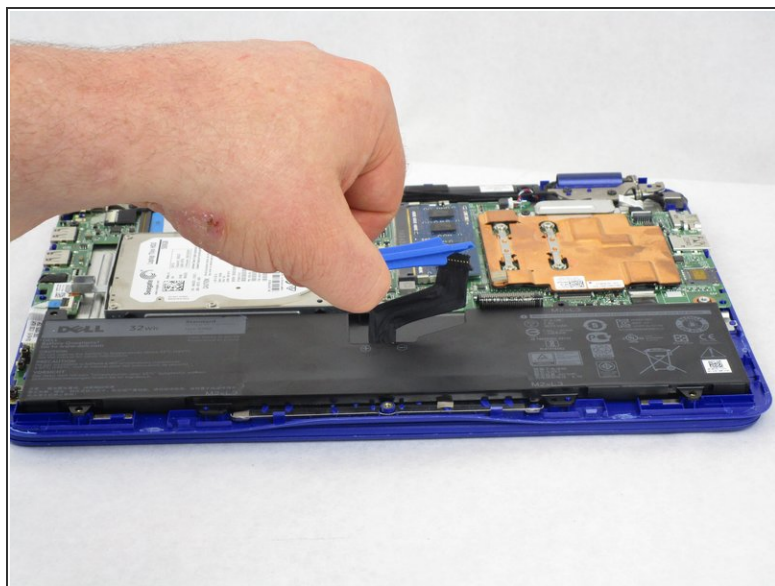
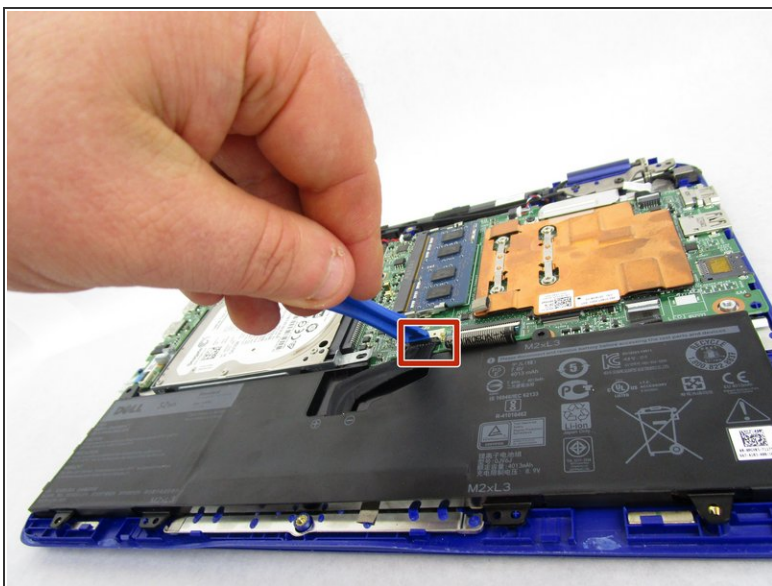


### Step 3



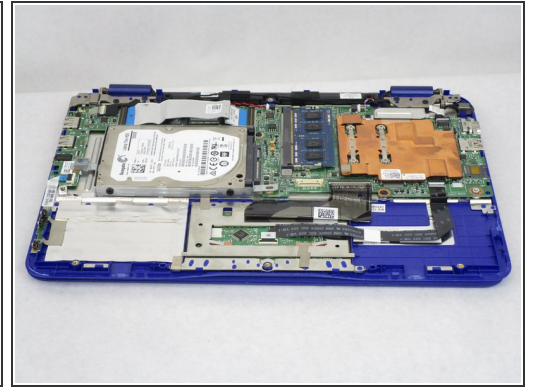
- Remove the one 7.5mm screw that is holding the battery in place.

### Step 4



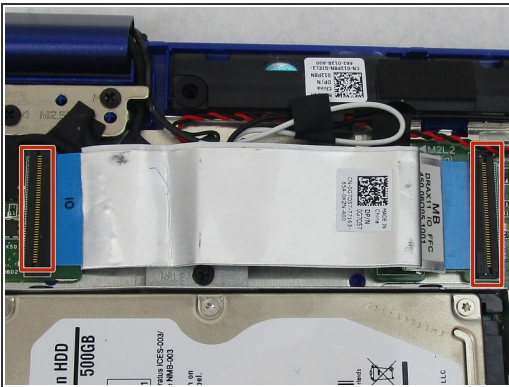
- Use the plastic opening tool to disconnect the battery cable.

## Step 5



- Remove the battery.

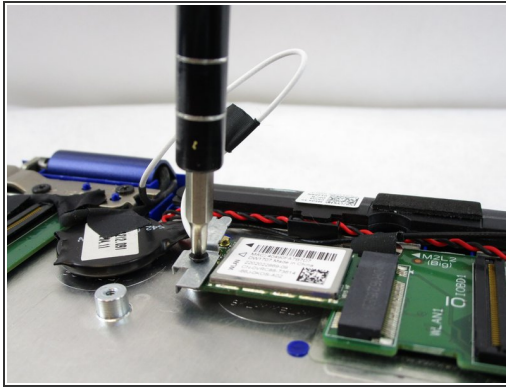
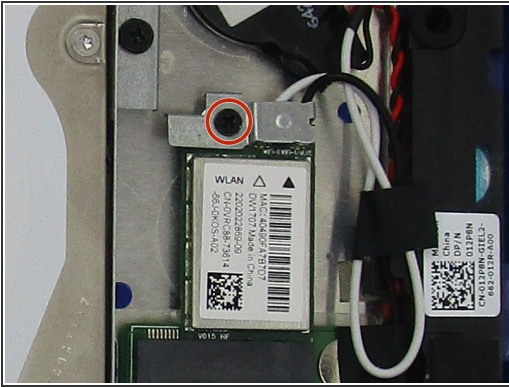
## Step 6 — Wifi module



- Use an opening tool or your fingers to release the clamps on both ends of the ribbon cable and lift away.

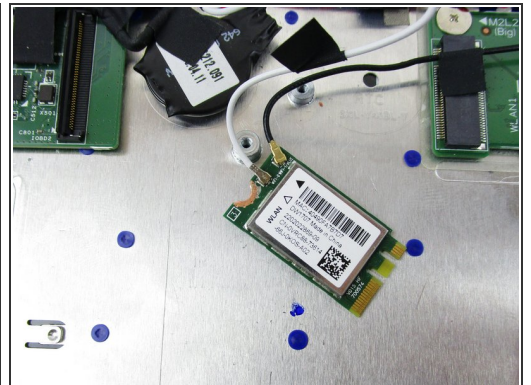
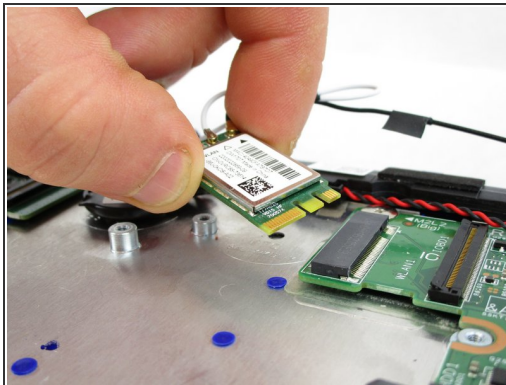
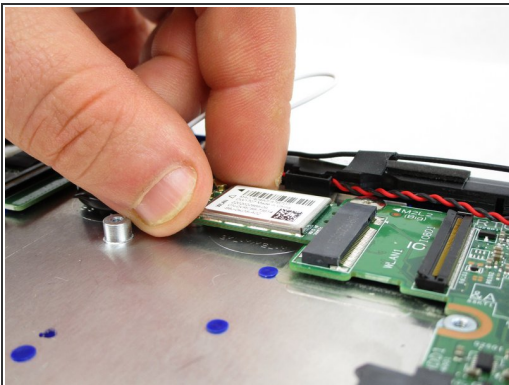


## Step 7



- Use a Phillips #00 screwdriver to remove the screw that is holding the WiFi module in place.
- Remove the metal piece that covers the antenna cable connectors.

## Step 8



- To remove the WiFi module from the motherboard, slide it free of the socket connector.

## Step 9



- Disconnect both the black and the white wires from the WiFi module.

To install the replacement module, start at step 4 and work your way backwards to step 1.