



Dell Inspiron 1100 CD Drive Replacement

This guide will demonstrate how to replace the CD Drive on the Dell Inspiron 1100.

Written By: Alexander Pacheco



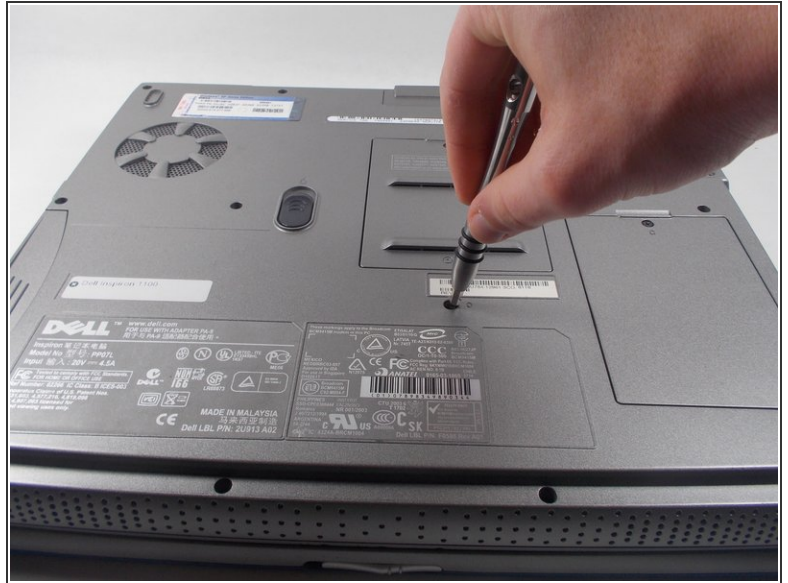
INTRODUCTION

The CD Drive is used to read and write CDs. The CD Drive is delicate and can be easily broken which could lead to it needing replacement.

TOOLS:

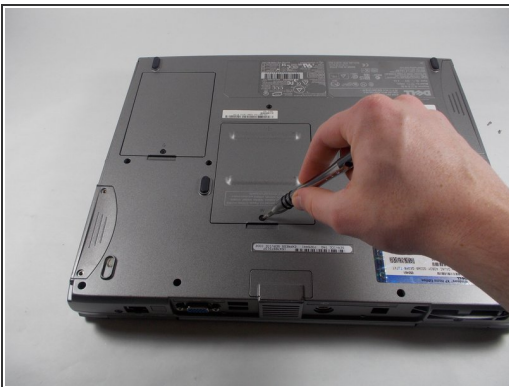
- [Phillips #0 Screwdriver](#) (1)
-

Step 1 — CD Drive



- Unscrew the one 8mm Phillips #0 screw immediately below the RAM compartment and remove the panel.
- ⓘ This screw locks the CD Drive into place and must be completely removed before proceeding.

Step 2



- Unscrew the one Phillips #0 screw at the bottom of the RAM compartment cover, and remove the RAM compartment cover.
- ⚠ The screw does not separate from the cover. Be careful when using force to remove the cover. Also be sure that the screw has been completely unscrewed.

Step 3



- Push and hold the switch inside the RAM compartment to the right.
- ⓘ This will cause the CD Drive to be slightly pushed out of its slot.
- ☑ If the switch cannot be moved, check to make sure you have completed the first step in this guide.

Step 4



- While holding down the switch in the RAM compartment, pull out the CD Drive.

To reassemble your device, follow these instructions in reverse order.