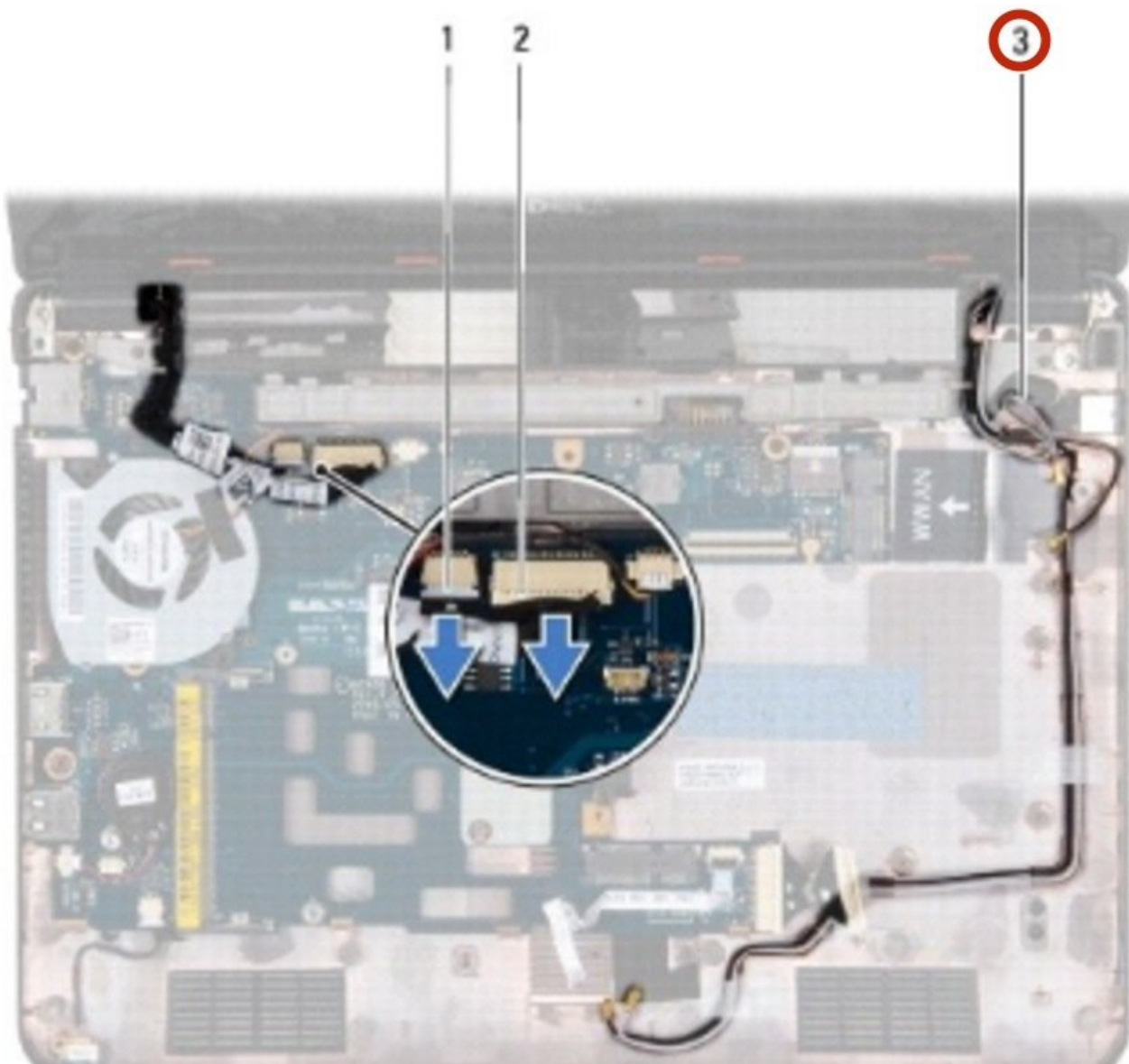




# Dell Inspiron 11z 1110 Display Assembly Replacement

Written By: Terrence15



---

## INTRODUCTION

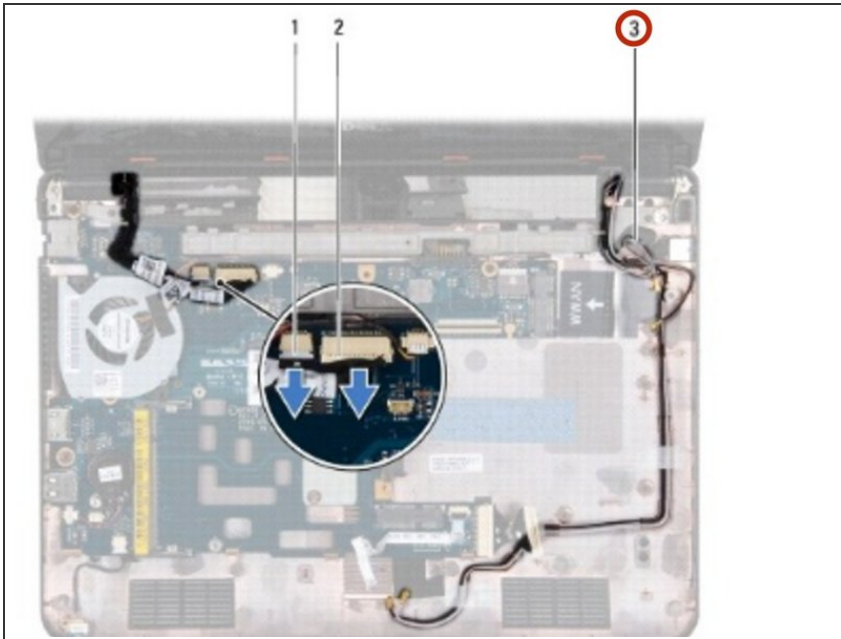
In this guide, we will show you how to remove and replace the Display Assembly.



### TOOLS:

- [Phillips #0 Screwdriver](#) (1)
-

## Step 1 — Dislodge the Mini-Card Antenna Cables

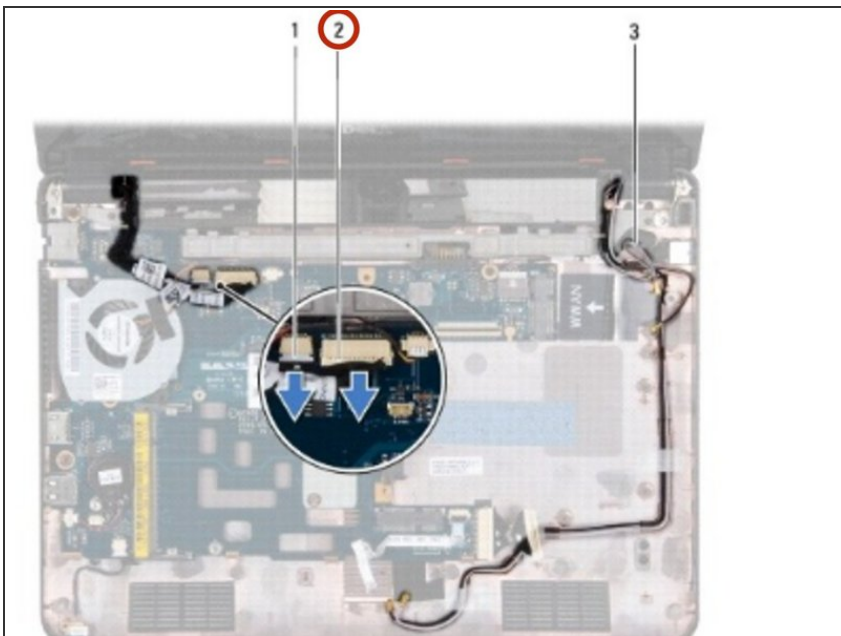


**⚠ WARNING:** Before working inside your computer, read the safety information that shipped with your computer. Follow the procedures in [Before You Begin](#).

**⚠ CAUTION:** To avoid electrostatic discharge, ground yourself by using a wrist grounding strap or by periodically touching an unpainted metal surface (such as a connector on your computer).

- Make note of the cable routing and carefully dislodge the Mini-Card antenna cables from the routing guides.

## Step 2 — Disconnecting the Display Cable



- Disconnect the display cable and the camera cable from the system board connectors.

### Step 3 — Remove the Screws



- Remove the two screws (one on each side) that secure the display assembly to the computer base.

### Step 4 — Lifting the Display Assembly



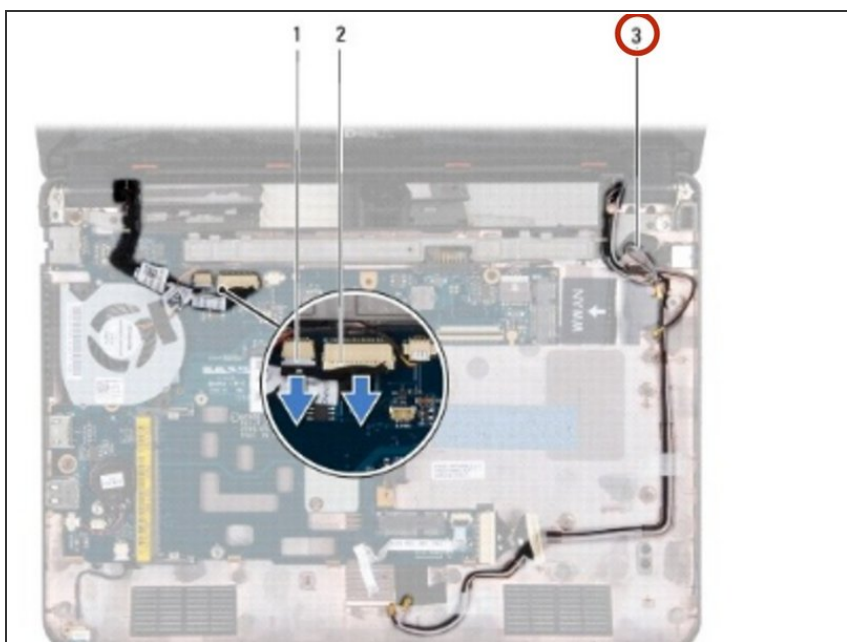
- Lift the display assembly off the computer.

## Step 5 — Placing the Display Assembly



- Place the **NEW** display assembly in position and replace the two screws (one on each side) that secure the display assembly to the computer base.

## Step 6 — Routing the Mini-Card Antenna Cables



- Route the Mini-Card antenna cables through the routing guides.

To reassemble your device, follow these instructions in reverse order.