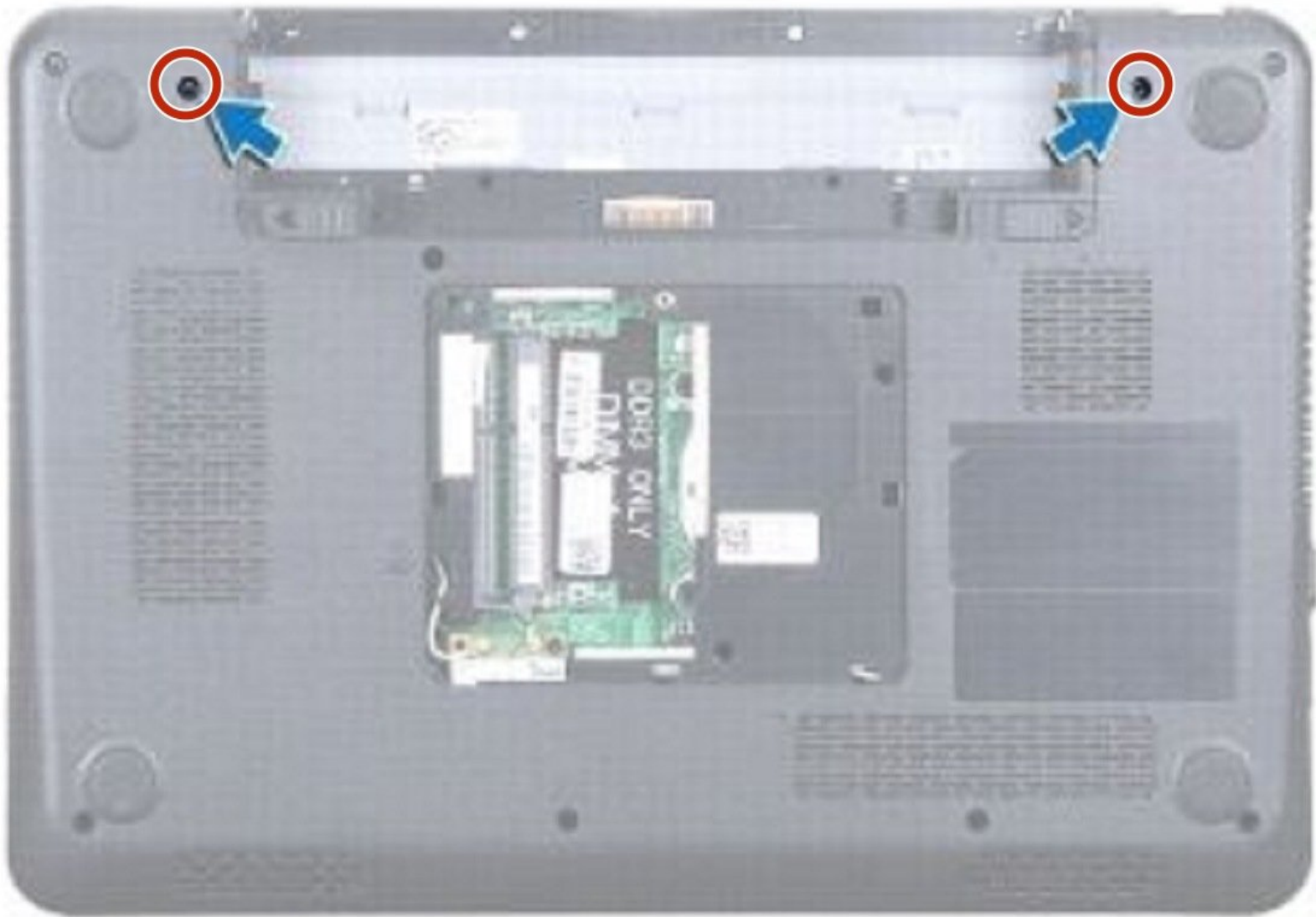




# Dell Inspiron 13 N3010 Display Assembly Replacement

Written By: Terrence15



---

## INTRODUCTION

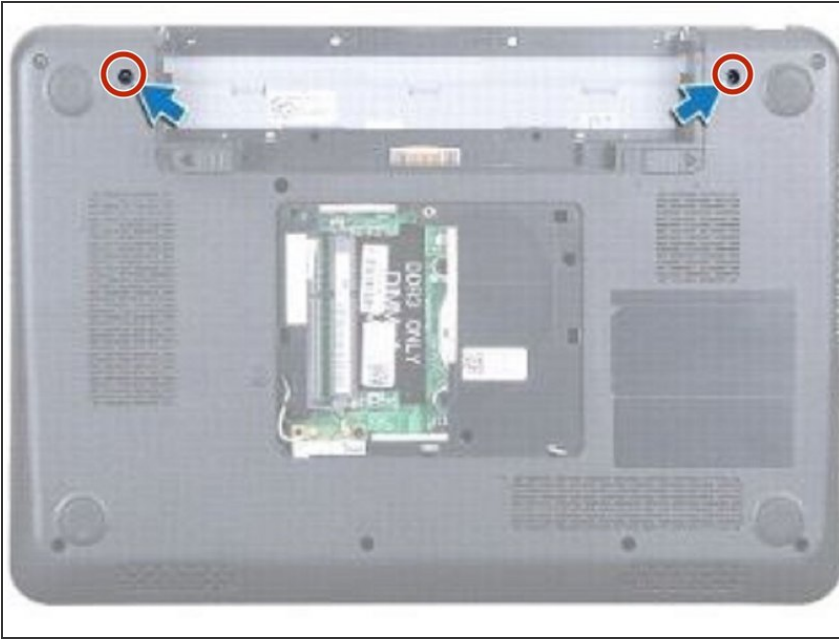
In this guide, we will show you how to remove and replace the Display Assembly.



### TOOLS:

- [Phillips #0 Screwdriver](#) (1)
-

## Step 1 — Remove the Screws



**WARNING:** Before working inside your computer, read the safety information that shipped with your computer. Follow the instructions in [Before You Begin](#).

**CAUTION:** To avoid electrostatic discharge, ground yourself by using a wrist grounding strap or by periodically touching an unpainted metal surface (such as a connector on your computer).

- Remove the two screws on the bottom of the computer that secure the display assembly to the computer base.

## Step 2 — Disconnecting the Display Cable



- Open the display as far as possible.
- Pull the pull-tab to disconnect the display cable from the connector on the system board.

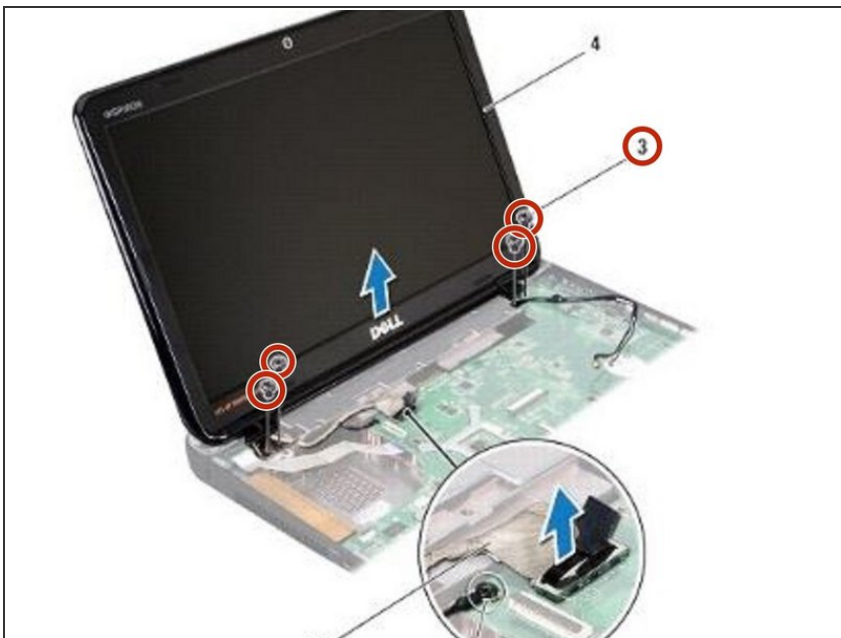
### Step 3 — Remove the Display Cable



- Remove the display cable grounding screw.

**i** NOTE: Open the display at a 90-degree angle to the plane.

### Step 4 — Remove the Screws



- In sequential order (indicated on the display hinge), remove the four screws that secure the display assembly to the computer base.

## Step 5 — Lifting the Display Assembly



- Lift the display assembly off the computer.

## Step 6 — Placing the Display Assembly



- Place the **NEW** display assembly in position.

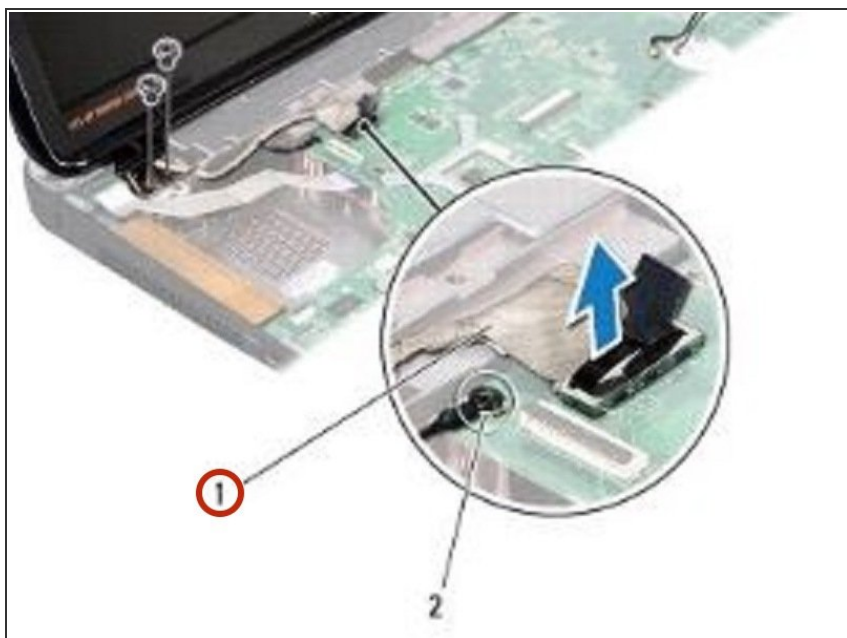


## Step 7 — Replace the Screws



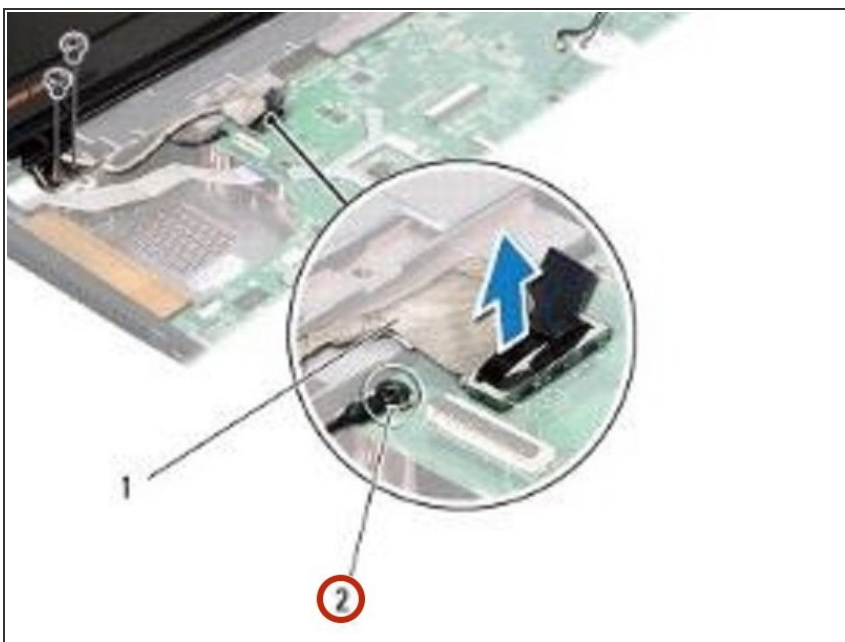
- In sequential order (indicated on the display hinge), replace the four screws that secure the display assembly to the computer base.

## Step 8 — Connecting the Display Cable



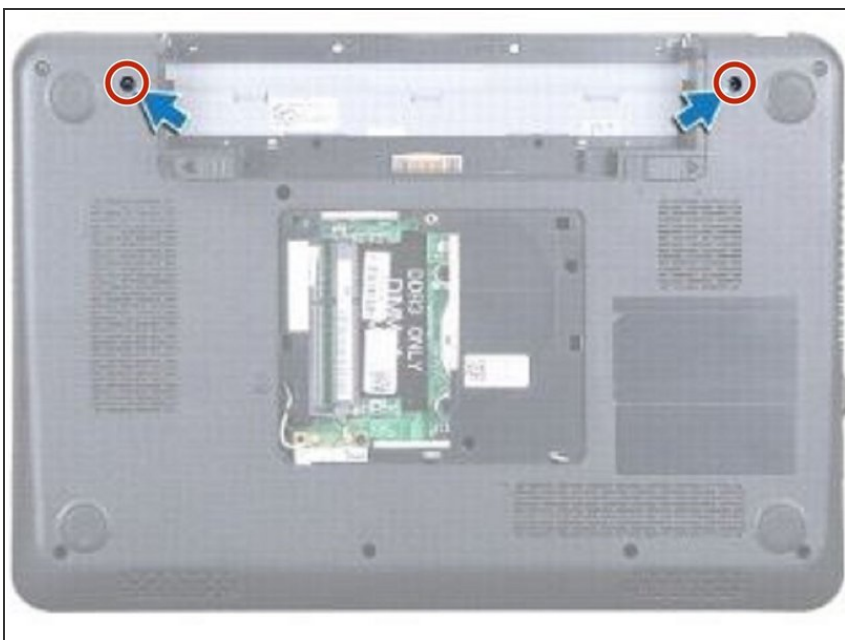
- Connect the display cable to the connector on the system board.

## Step 9 — Replace the Display Cable



- Replace the display cable grounding screw.

## Step 10 — Replace the Screws



- Turn the computer over and replace the two screws that secure the display assembly to the computer base.

To reassemble your device, follow these instructions in reverse order.