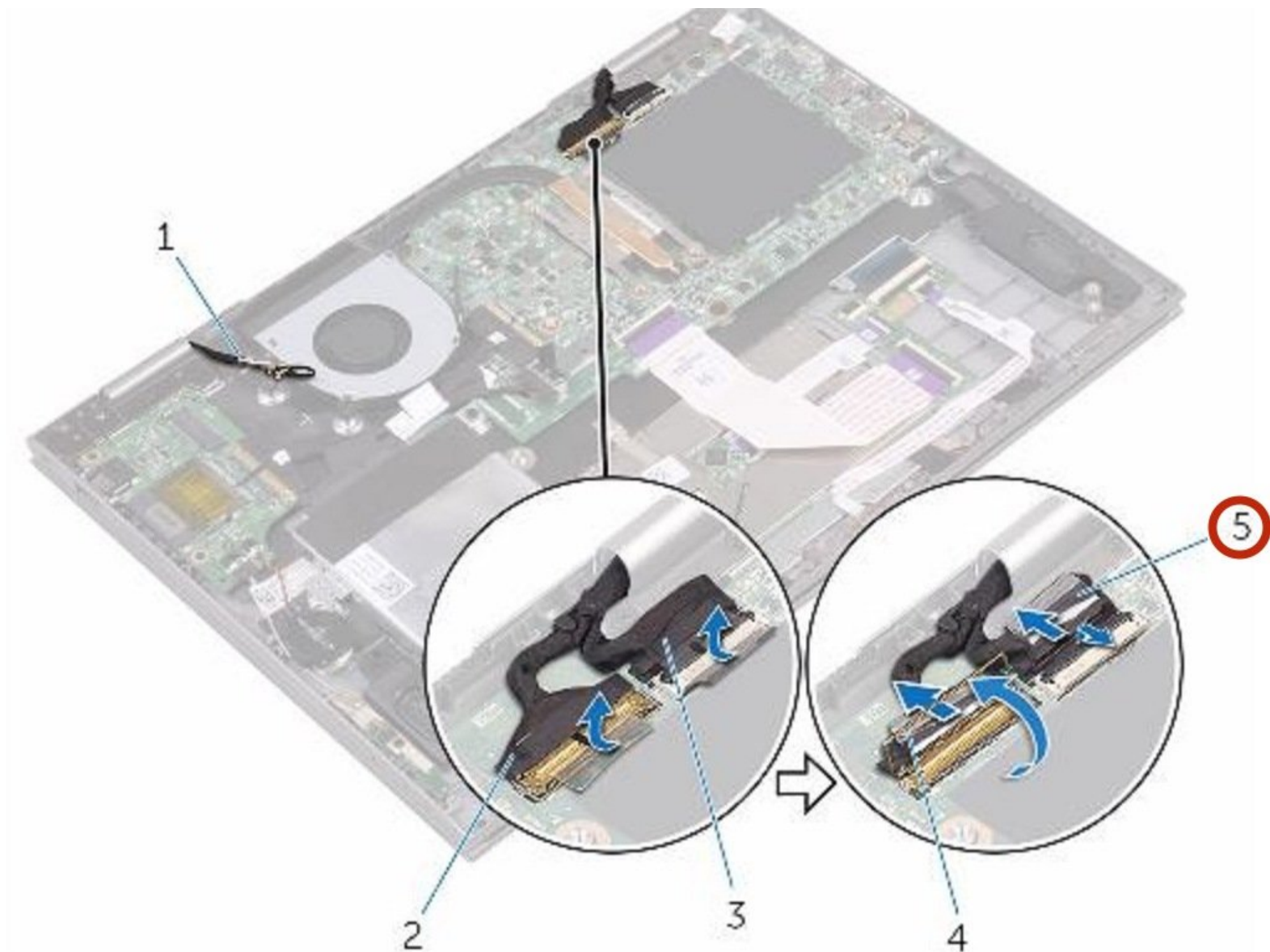




Dell Inspiron 13-5378 Display Assembly Replacement

Written By: Terrence15



INTRODUCTION

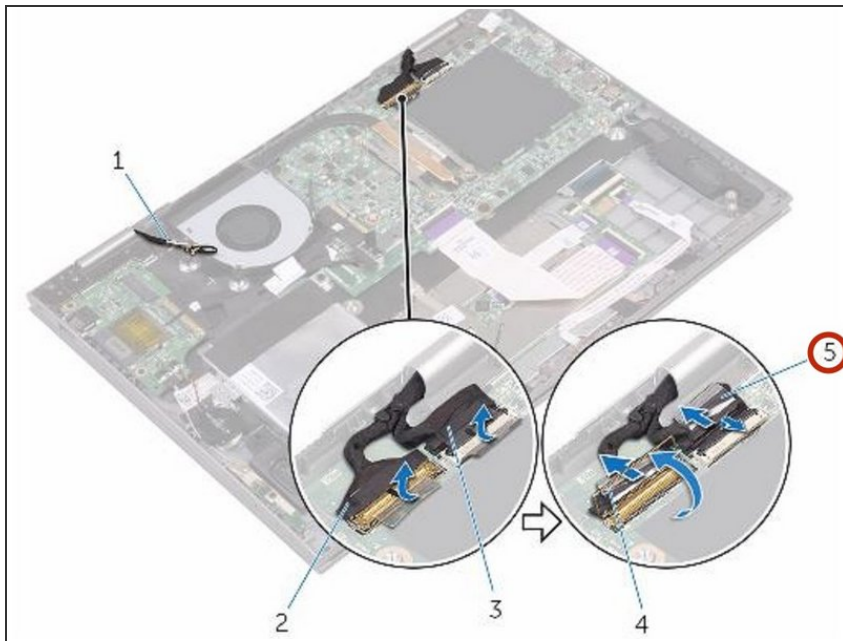
In this guide, we will show you how to remove and replace the Display Assembly.



TOOLS:

- [Phillips #0 Screwdriver](#) (1)
-

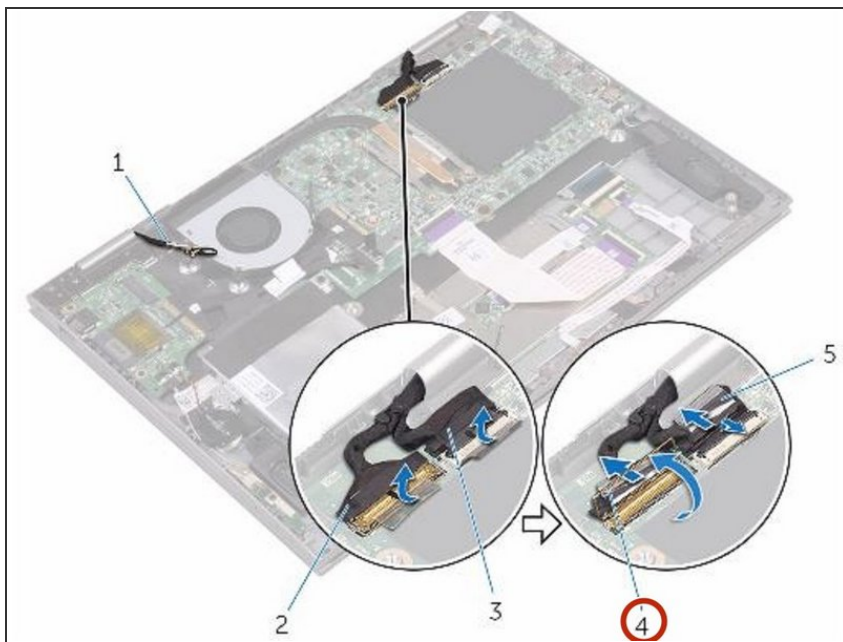
Step 1 — Peeling the Tape



⚠ WARNING: Before working inside your computer, read the safety information that shipped with your computer and follow the steps in [Before Working Inside Your Computer](#). After working inside your computer, follow the instructions in [After Working Inside Your Computer](#).

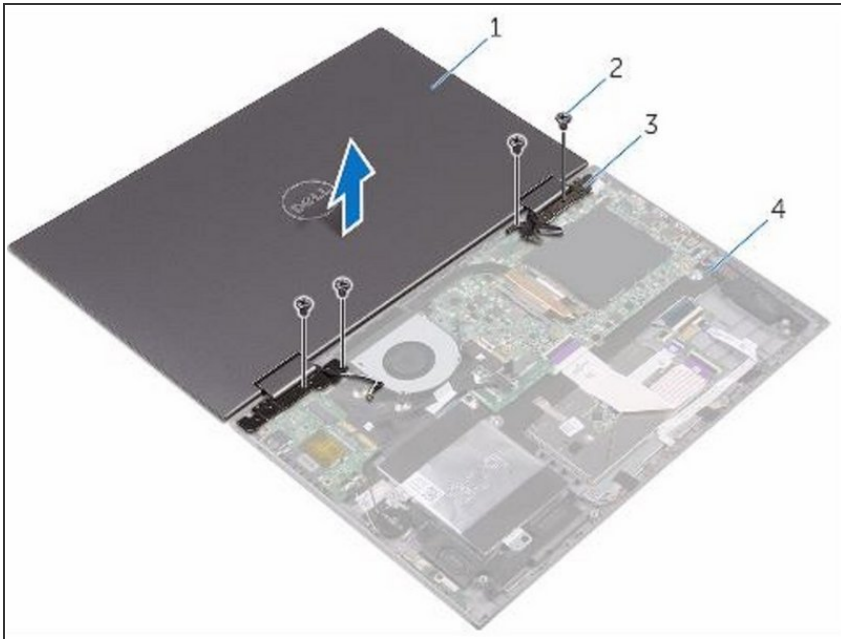
- Peel off the pieces of tape that secure the display cable and touch-screen board-cable to the system board.

Step 2 — Open the Latches



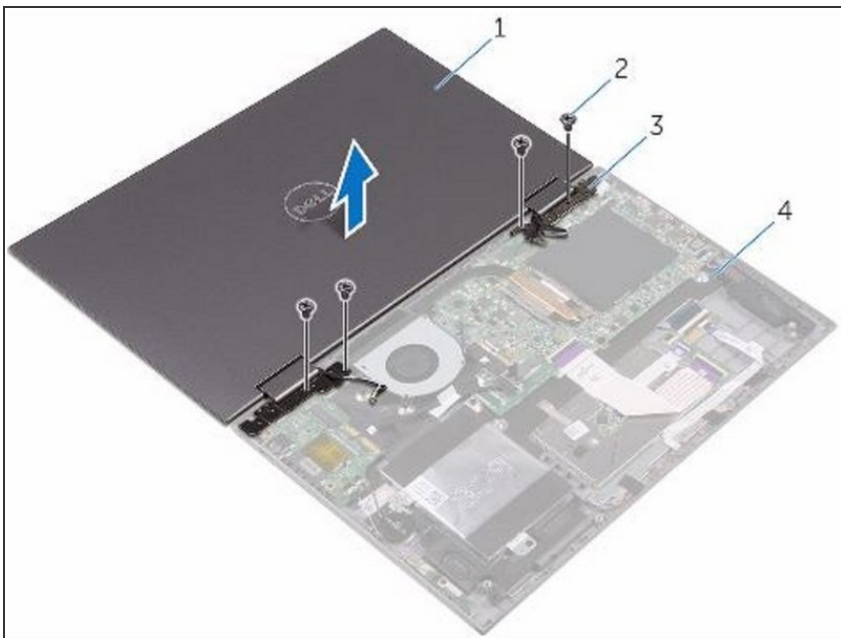
- Open the latches to disconnect the display cable and the touch-screen board-cable from the system board.

Step 3 — Open the Display



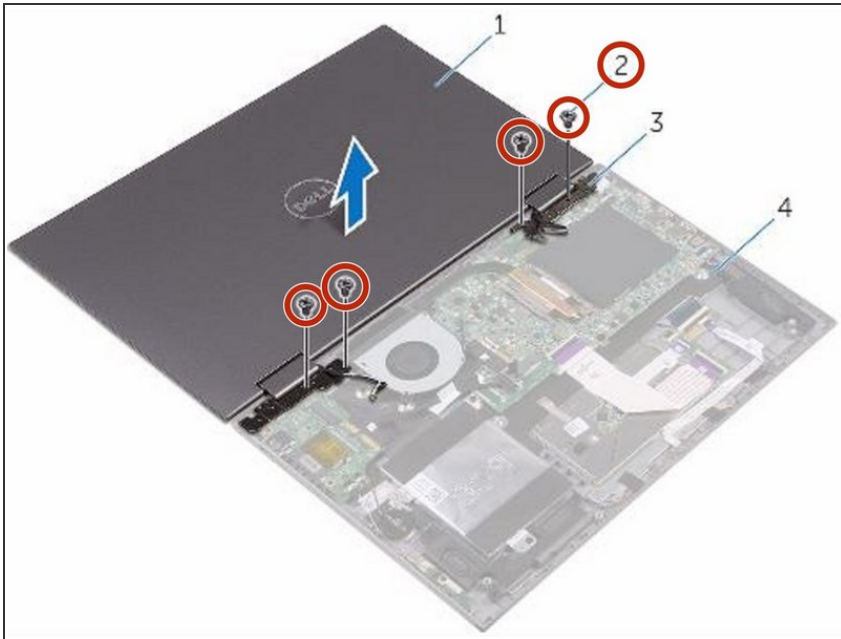
- Turn the computer over and open the display as far as possible.

Step 4 — Placing the Computer



- ⚠ CAUTION: Place the computer on a soft and clean surface to avoid scratching the display.
- Place the computer face down on a flat surface.

Step 5 — Remove the Screws



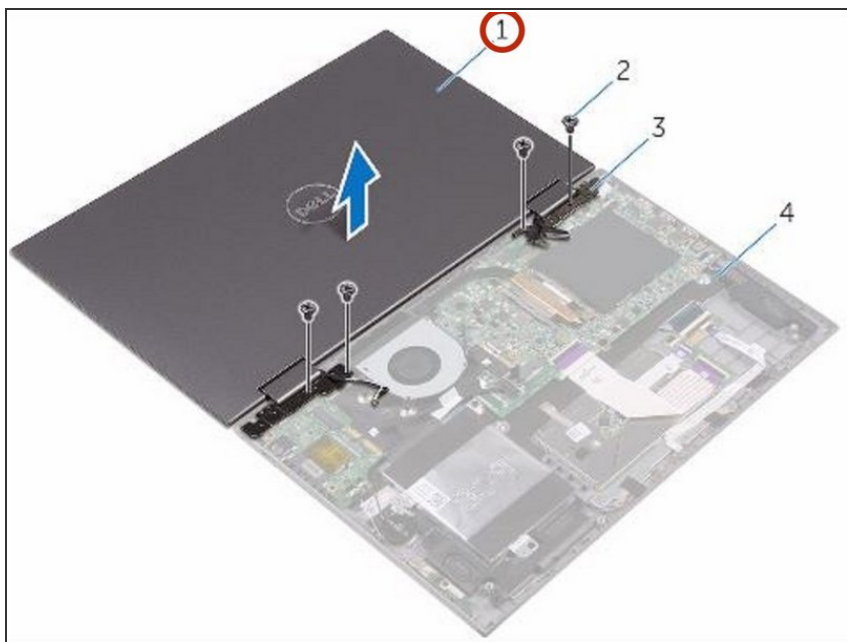
- Remove the screws that secure the display assembly to the palm-rest assembly.

Step 6 — Lifting the Display Assembly



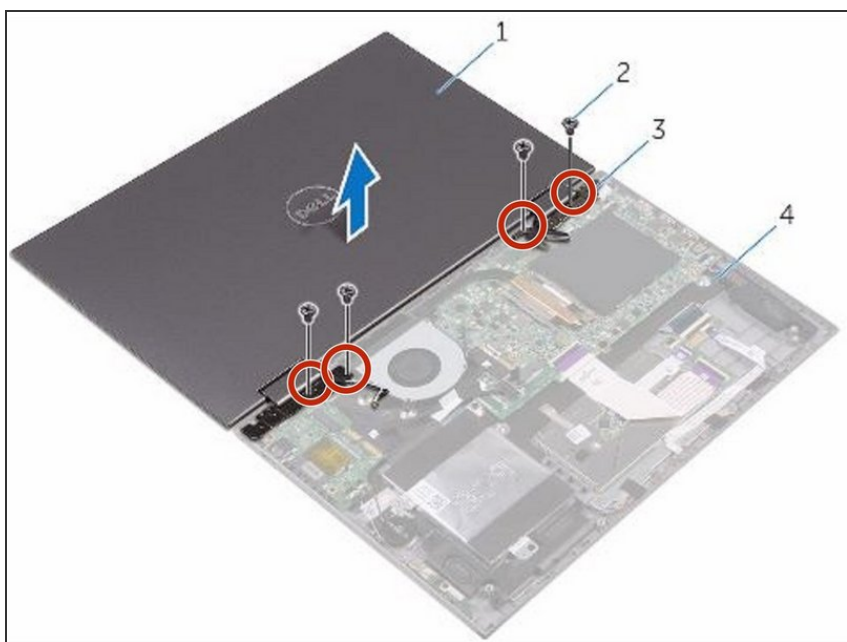
- Lift the display assembly off the palm-rest assembly.

Step 7 — Placing the Display Assembly



- Place the **NEW** display assembly face down on the palm-rest assembly.

Step 8 — Align the Screw Holes



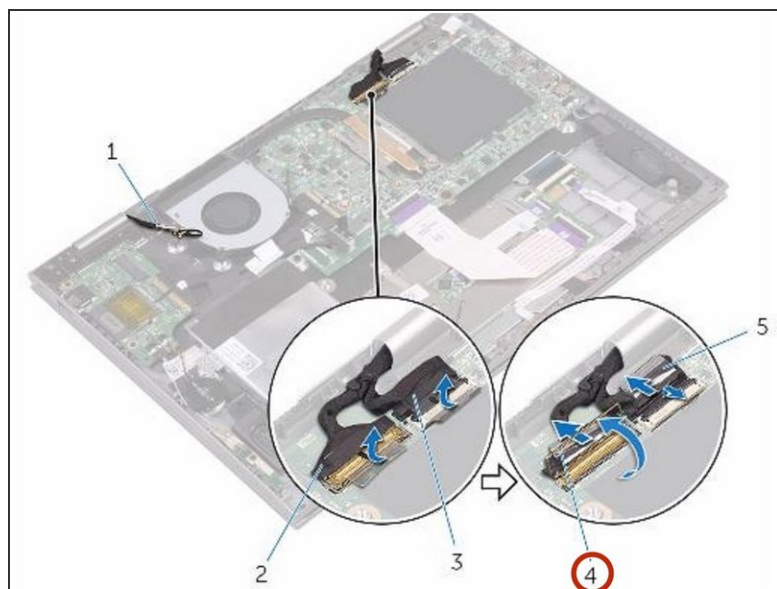
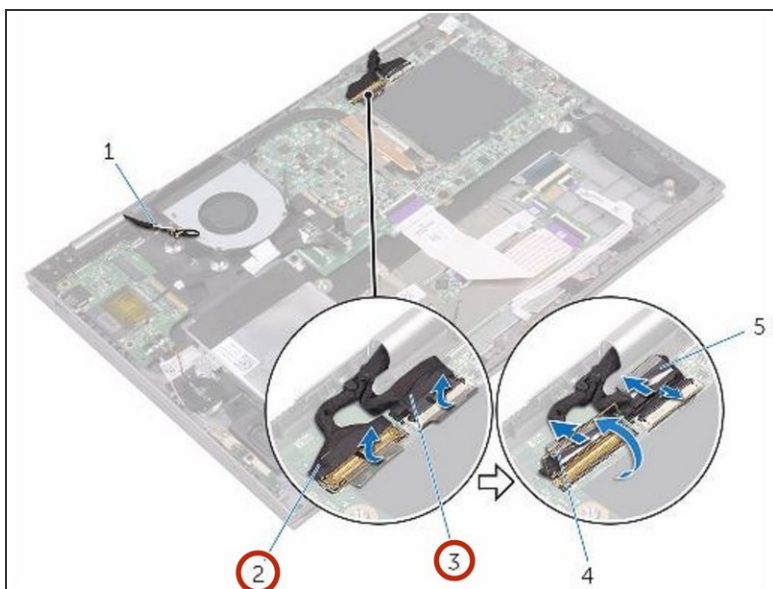
- Align the screw holes on the display hinges with the screw holes on the palm-rest assembly.

Step 9 — Close the Display



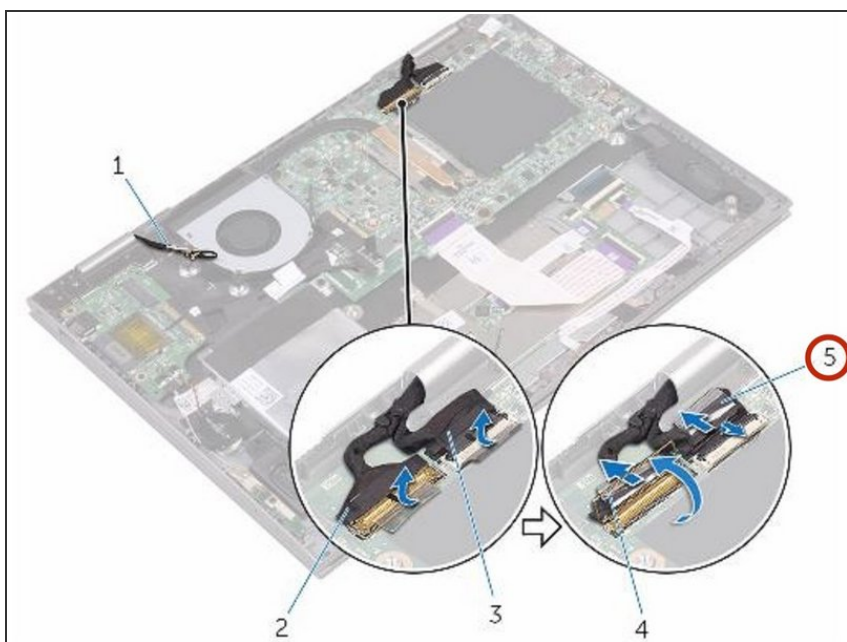
- Close the display and turn the computer over.

Step 10 — Sliding the Display Cable



- Slide the display cable and the touch-screen board-cable into their respective connectors on the system board and close the latches to secure the cables.

Step 11 — Adhering the Pieces



- Adhere the pieces of tape that secure the display cable and the touch-screen board-cable to their respective connectors on the system board.

To reassemble your device, follow these instructions in reverse order.