



Dell Inspiron 13-7347 Touchpad Replacement

This guide would be useful for replacing faulty or broken touchpad for your Dell Inspiron 13-7347.
Make sure to follow the instructions closely.

Written By: lee120496



INTRODUCTION

This guide will assist you to replace a new touchpad to of your Dell Inspiron 13-7347. Make sure the touchpad that you are replacing is specifically for Dell Inspiron 13-7347. It's very important to find the correct model of touchpad for your Dell Inspiron 13-7347 in order to prevent any troubles. Be sure to use the tools we suggested, and be gentle when you are using the screwdriver. Its very easy to lead to stripped screws if you didn't use the screwdriver correctly or not gentle enough.

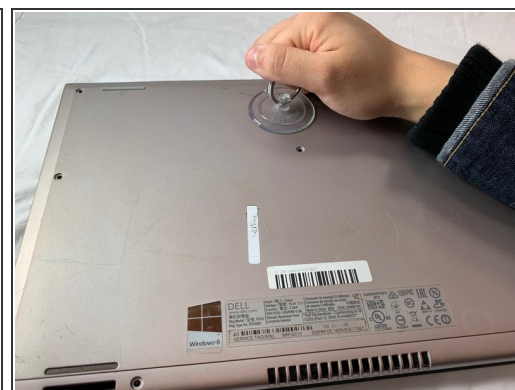
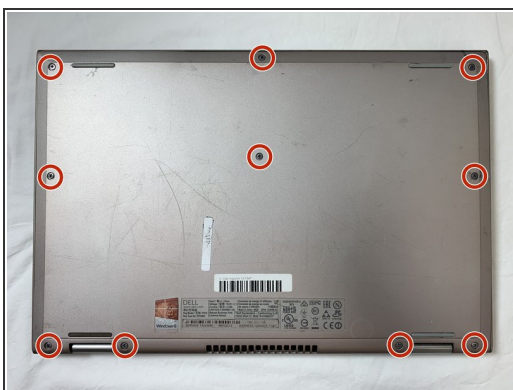
Make sure to follow the instructions step by step carefully.



TOOLS:

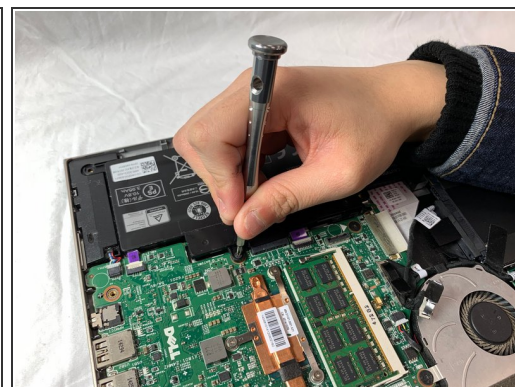
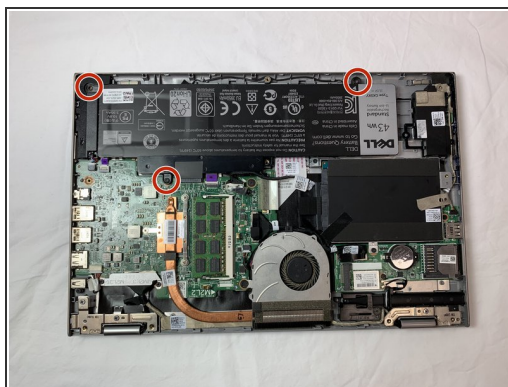
- [Mako Driver Kit - 64 Precision Bits](#) (1)
 - [Suction Handle](#) (1)
-

Step 1 — Battery



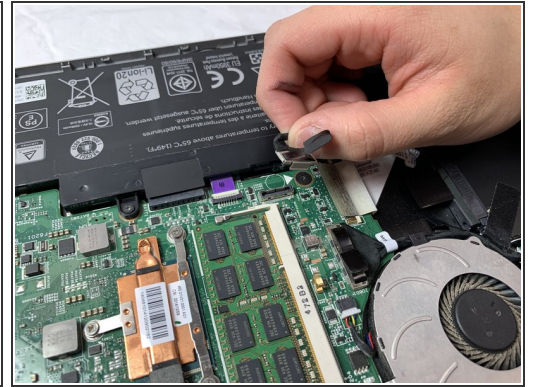
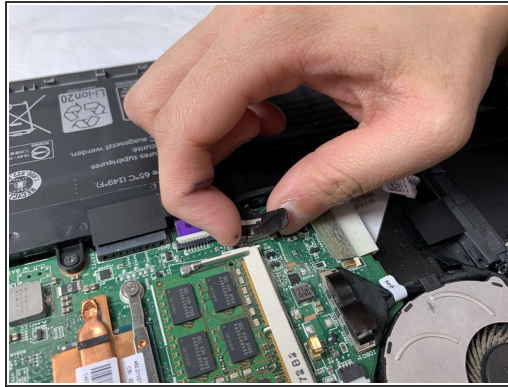
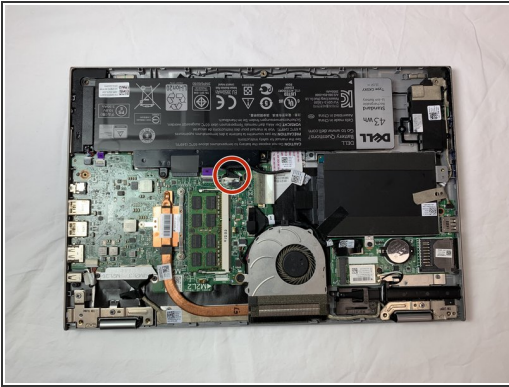
- Flip the device over, so that the back is facing up.
- Remove the ten, 7 mm, Phillips #1 screws on the back of your Dell Inspiron 13-7347.
- Use the suction cup to lift off the back case.

Step 2



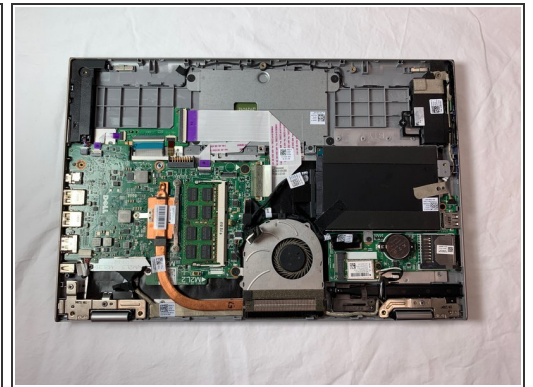
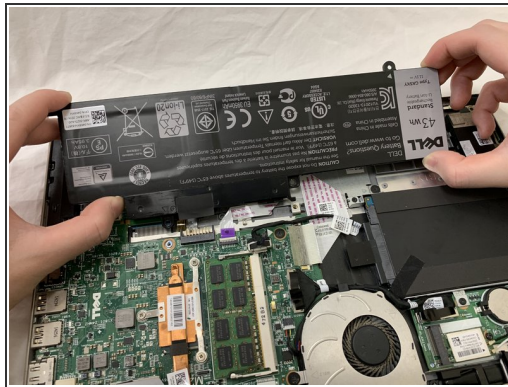
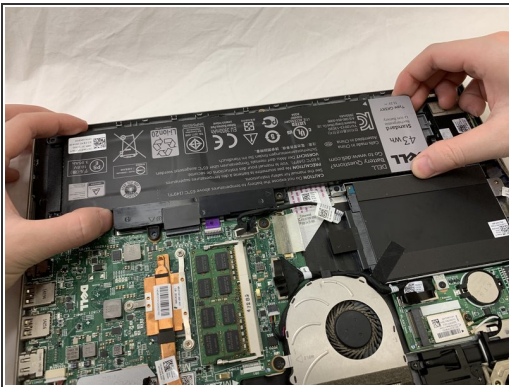
- Remove the three 4 mm JIS #00 screws that secure the battery to the device.

Step 3



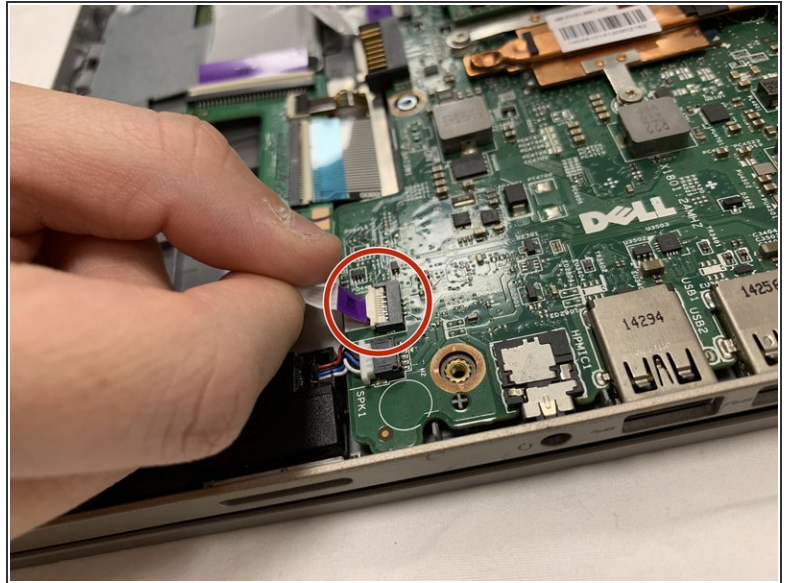
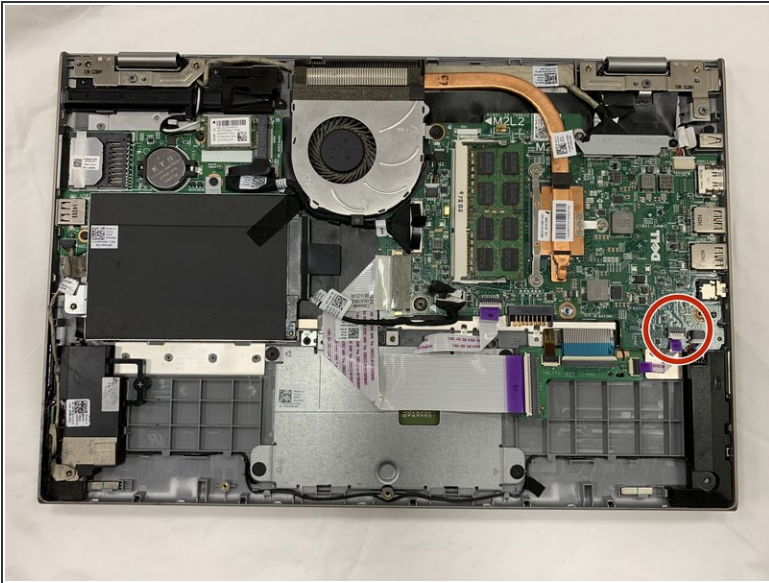
- Unplug the flat connector that is connected to the battery.

Step 4



- Lift the battery steadily from the device.
- ⓘ Tilt the battery upward while removing.

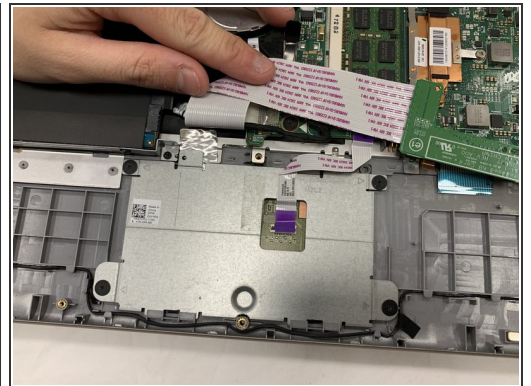
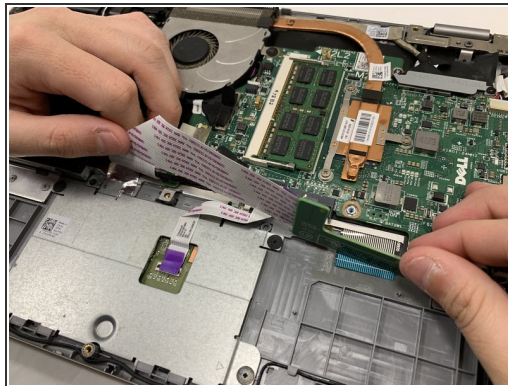
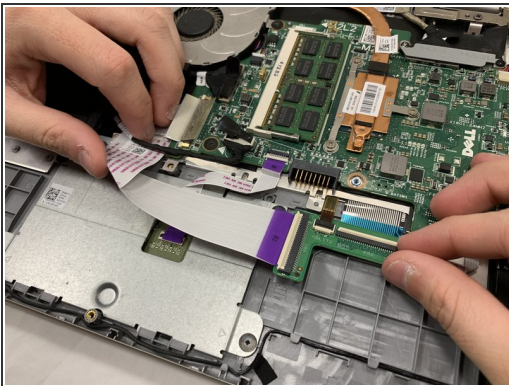
Step 5 — Touchpad



- Unplug the sliding connector.

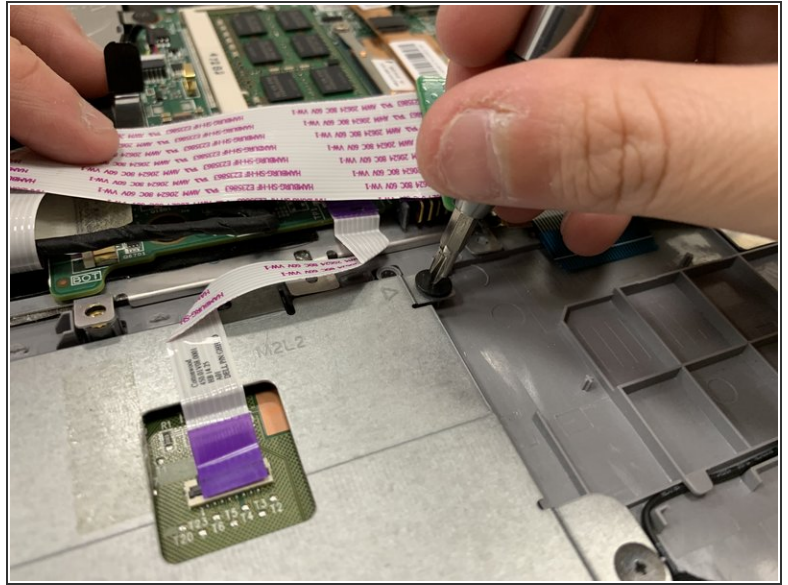
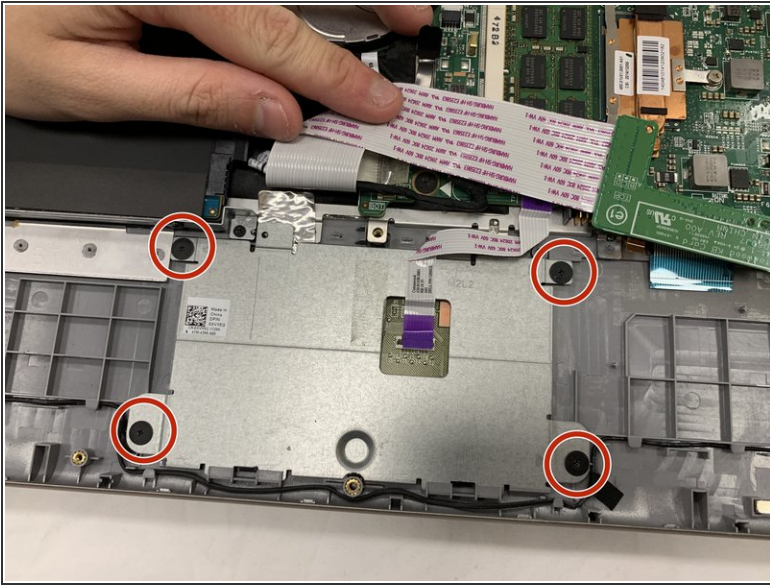
⚠ The cord is extremely fragile.

Step 6



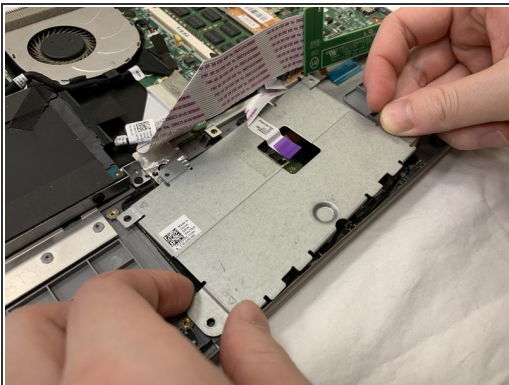
- Flip the cord upward.

Step 7



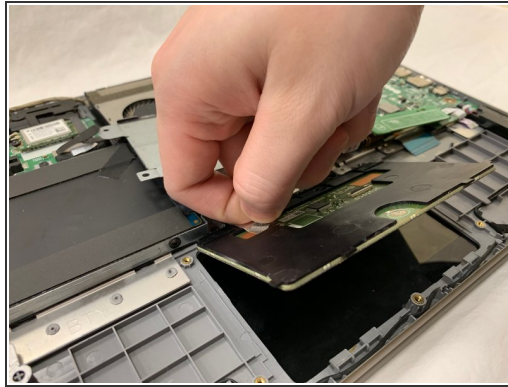
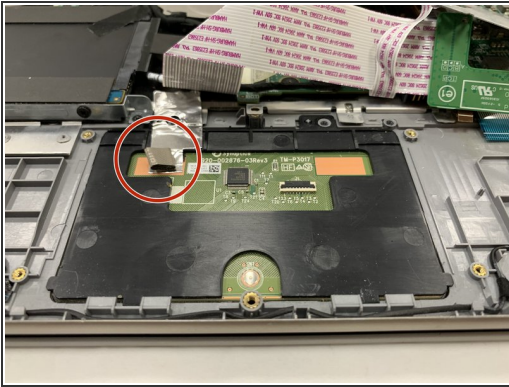
- Remove the four 2.5 mm JIS #00 screws.

Step 8



- Flip the metal plate upward.
- Take out the metal plate completely.

Step 9



- Remove the touchpad by lifting up the handle.

To reassemble your device, follow these instructions in reverse order.