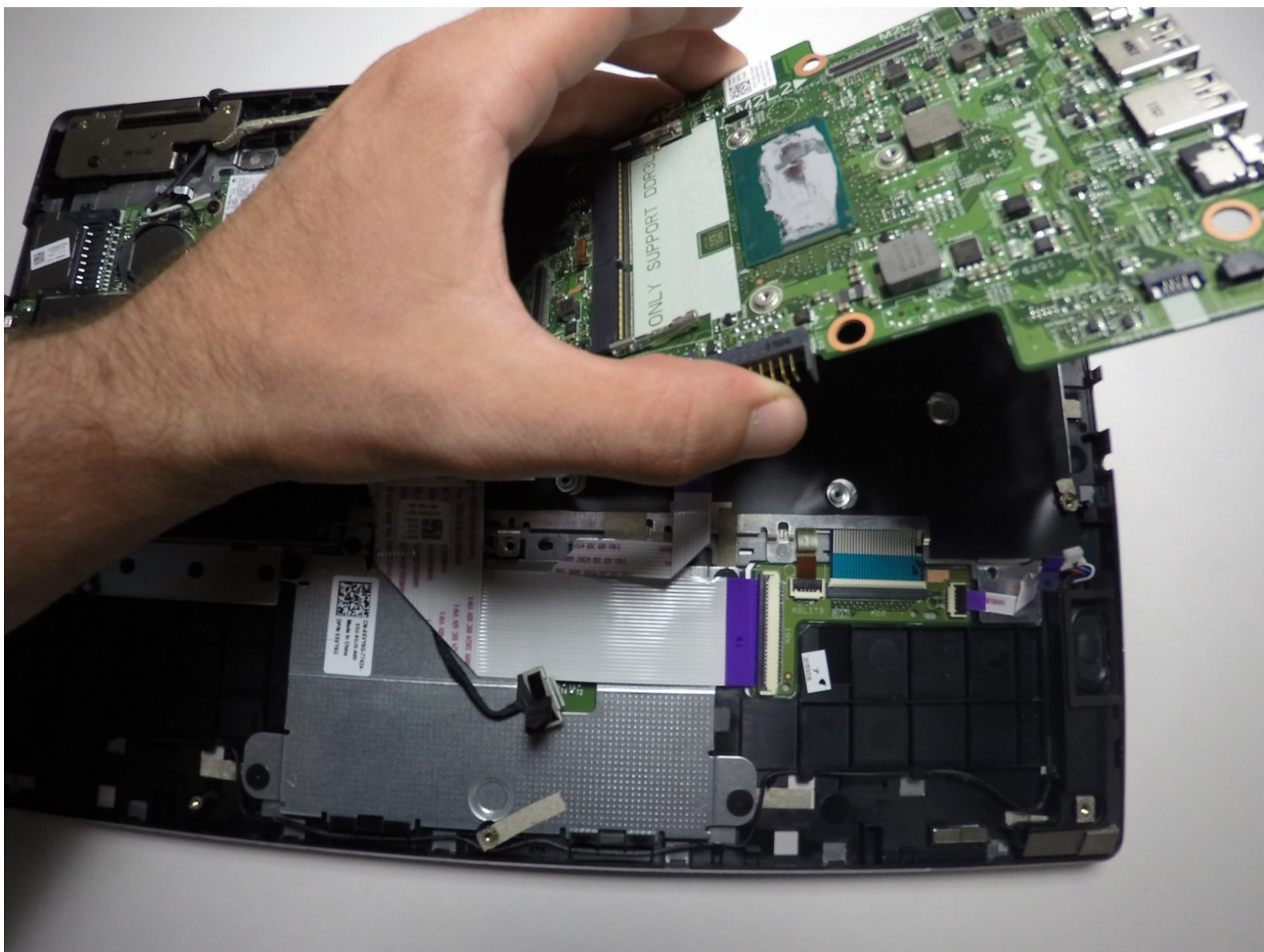




Dell Inspiron 13-7352 System Board Replacement

Replacement guide for the circuit board that connects most of the different components, including the memory, hard drive and other important interfaces.

Written By: Chris Monte



This document was generated on 2019-10-01 03:22:36 PM (MST).

INTRODUCTION

This guide will show users through the steps required to replace the main system board.



TOOLS:

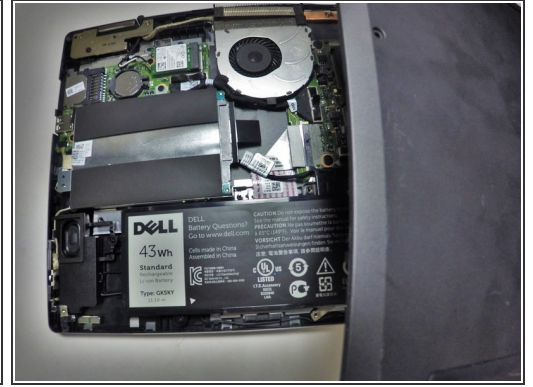
- [iFixit Opening Tools](#) (1)
- [Phillips #0 Screwdriver](#) (1)



PARTS:

- [Dell Inspiron 13-7352 Laptop Motherboard](#) (1)
- [Dell Inspiron 13-7352 CPU Laptop Heat Sink](#) (1)

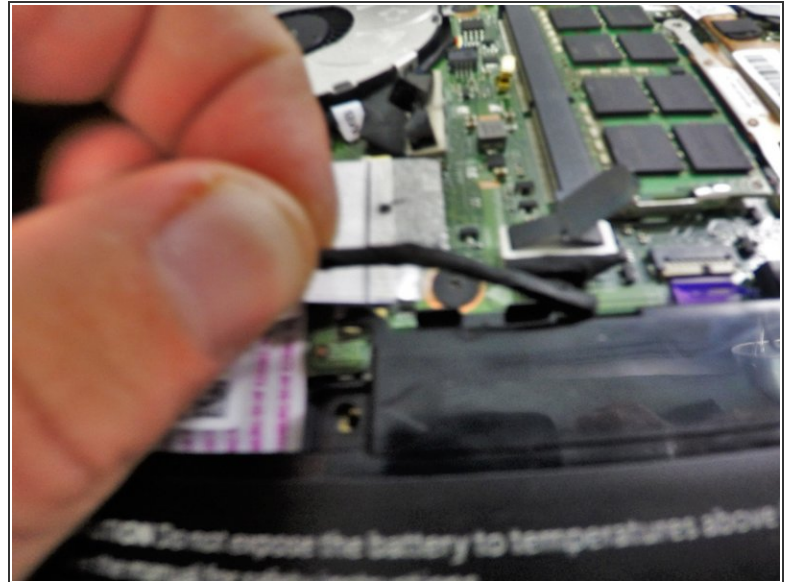
Step 1 — Battery



⚠ Before disassembling your laptop, be sure it is powered off.

- Remove the ten 7.5mm screws that secure the back panel with the Phillips #0 head
- Use the plastic opening tool to remove the back panel.

Step 2



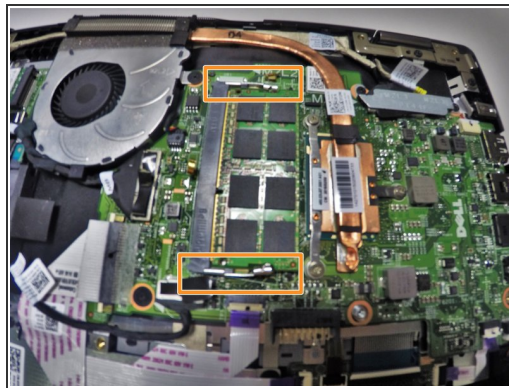
- Remove the two 3mm screws with the Phillips #0 head that hold down the battery.
- Remove the Hard Drive wire from the battery clip by detaching the wire

Step 3



- Gently remove the battery from the rest of the device.

Step 4 — Memory Module (RAM)



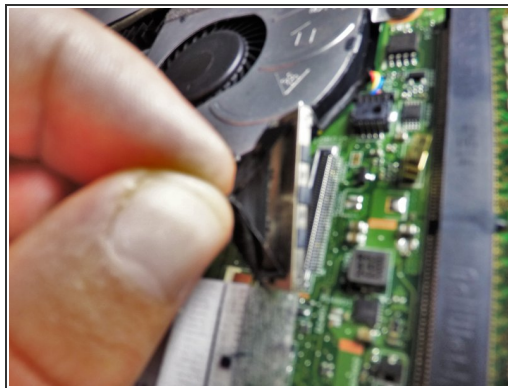
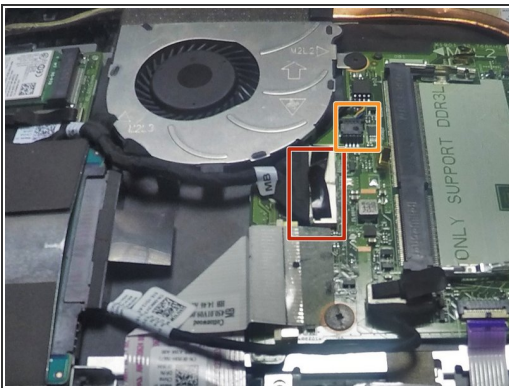
- Locate your memory module (RAM).
- Release the clips from the Memory Module by gently pushing down. This should cause the Memory Module to pop up and separate from the device base.

Step 5



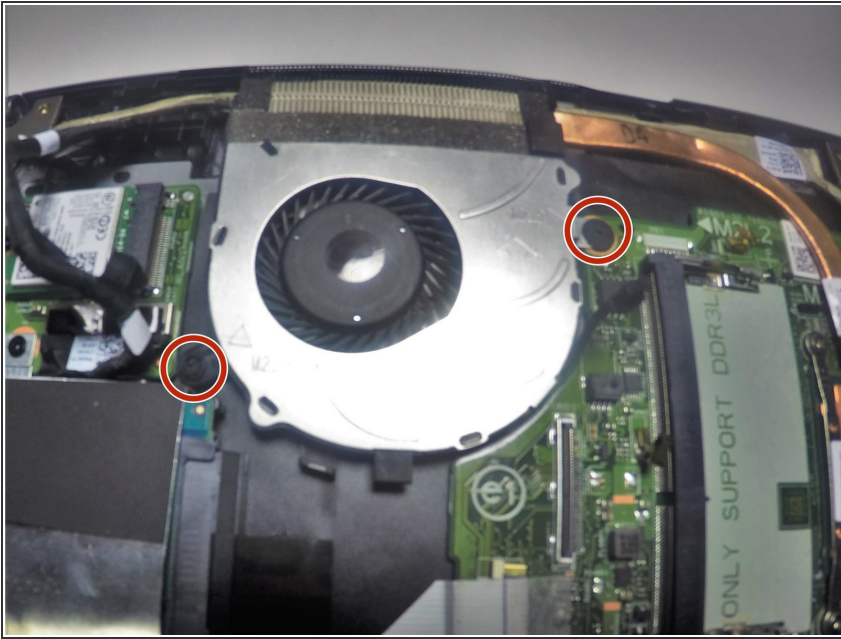
- Pull the Memory Module from its slot by grasping each side with thumb and middle or index finger to pull from the rest of the device.

Step 6 — System Board



- Remove cord that runs from system board to the I/O board.
- Remove connecting wire that runs from fan to system board.

Step 7



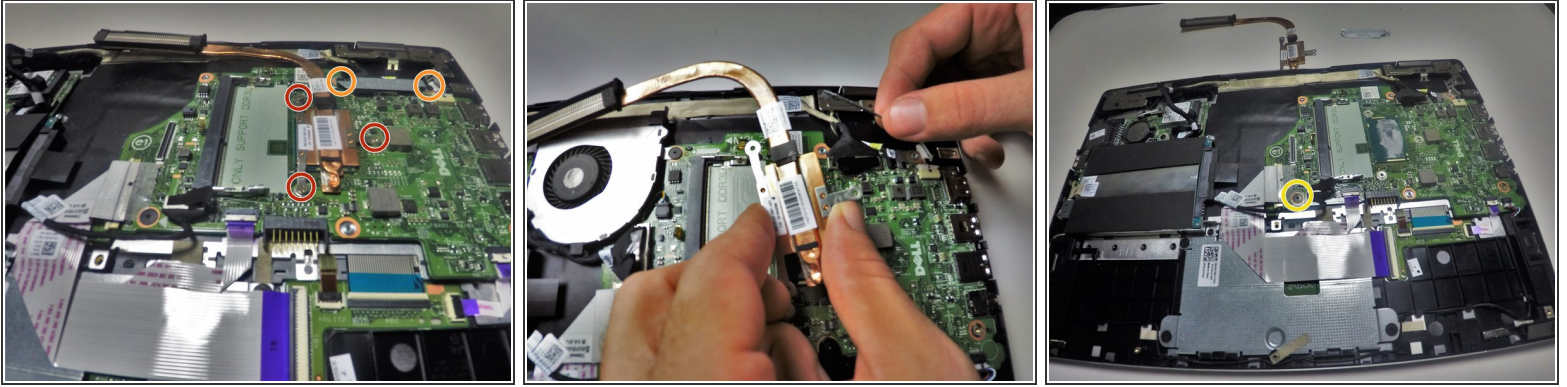
- Remove the 3mm and 4mm screws using the Phillips #0 head for both that hold down the fan

Step 8



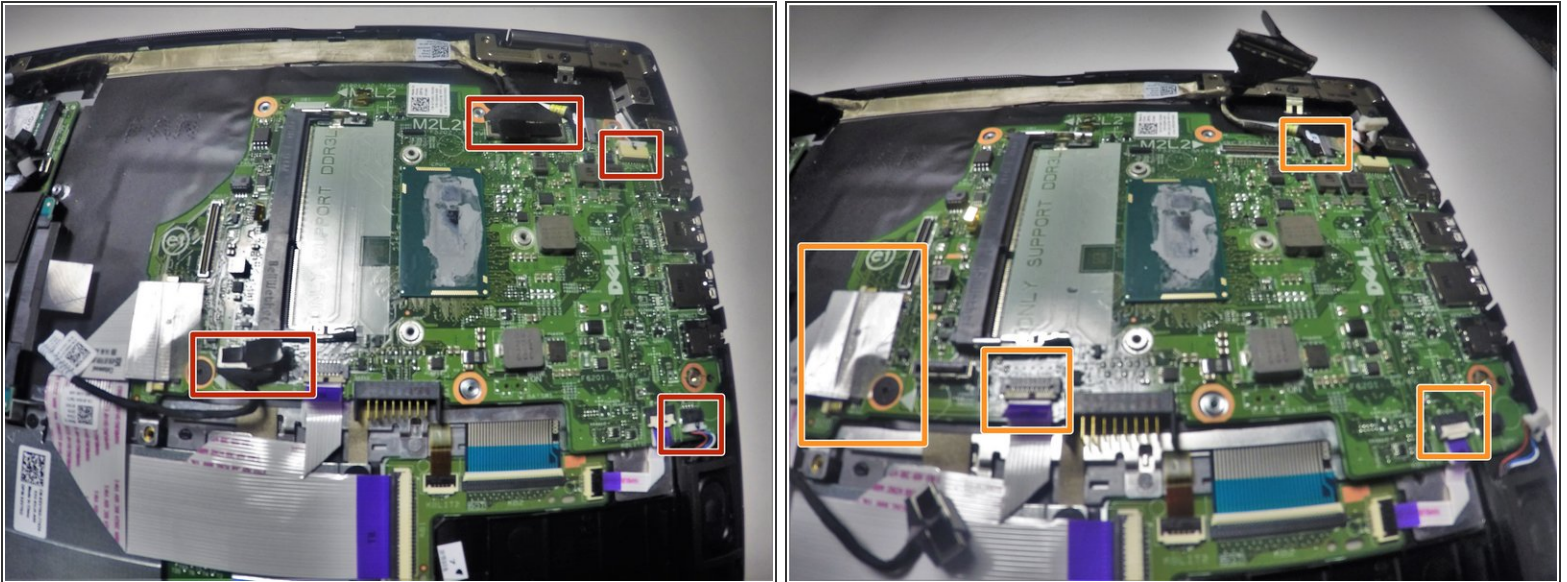
- Lift the fan from the system board by using your thumb and index or middle finger to gently pull away from the rest of the device.

Step 9



- Remove the three 4mm screws with the Phillips #0 holding down the heat sink.
- Remove the two 4mm screws with the Phillips #0 holding down the metal bracket.
- Unscrew the single 3mm screw using the Phillips #0 head securing the system board.

Step 10



- Remove the wire connections attached to the system board.
- Remove the tape wires from the system board.

Step 11



- Carefully remove the system board from the base by grasping with thumb and index or middle finger and pulling away from the rest of the device.

To reassemble your device, follow these instructions in reverse order.