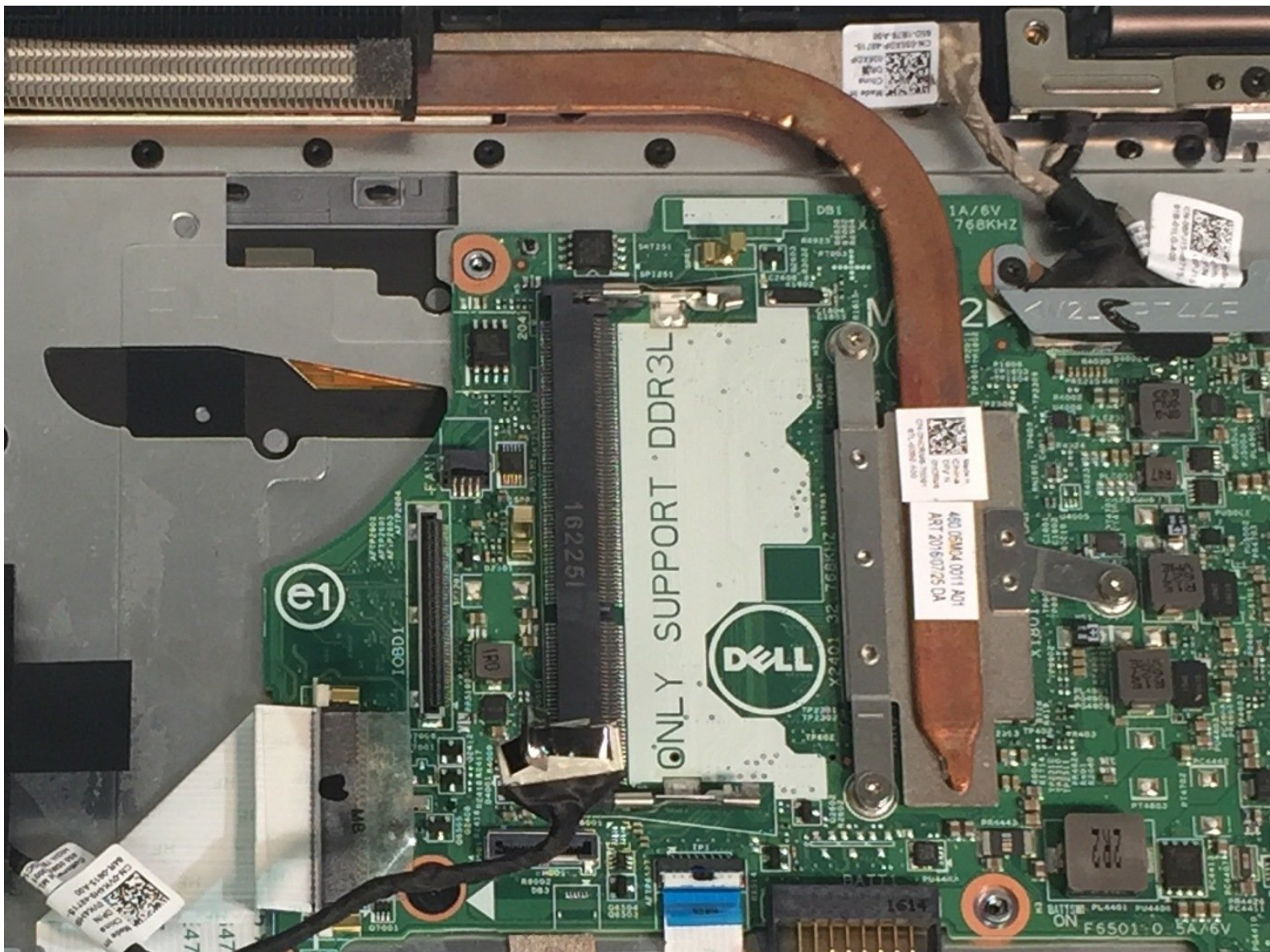




Dell Inspiron 13-7353 Heat Sink Replacement

This guide will help you replace the heat sink in your dell inspiron 13 7353 laptop.

Written By: Stephany Marin Restrepo



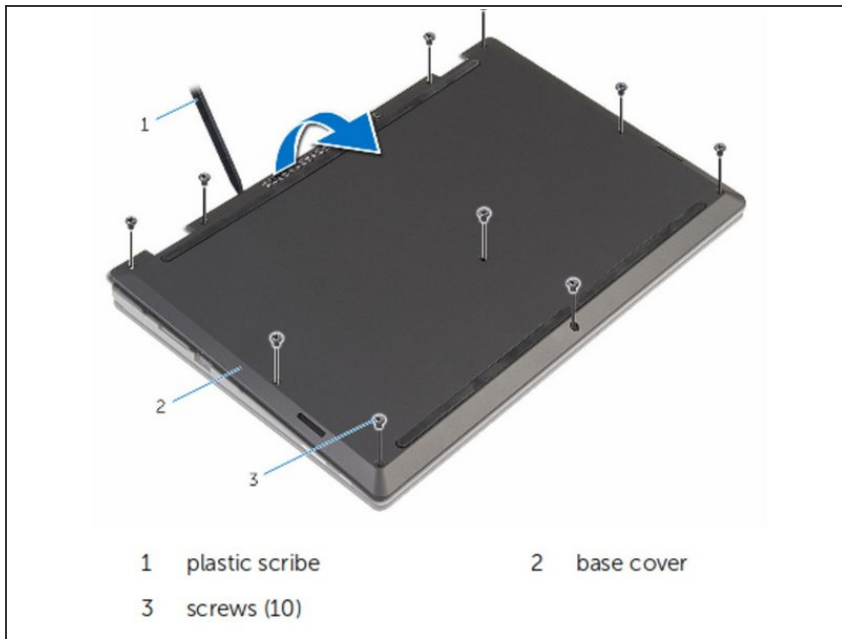
INTRODUCTION

If you notice your computer overheating and it is not because of the fan, this guide may be able to help. This guide will show you how to replace the heat sink in a few steps.

TOOLS:

- [Phillips #0 Screwdriver](#) (1)
 - [Phillips #1 Screwdriver](#) (1)
-

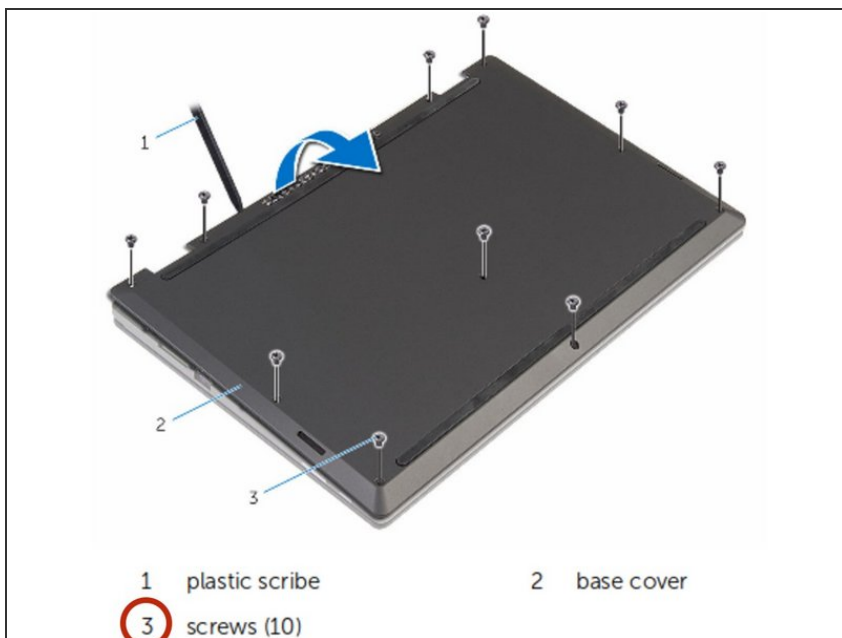
Step 1 — Flip the Computer



WARNING : Before working inside your computer, read the safety information that shipped with your computer and follow the steps in Before working inside your computer . After working inside your computer, follow the instructions in After working inside your computer.

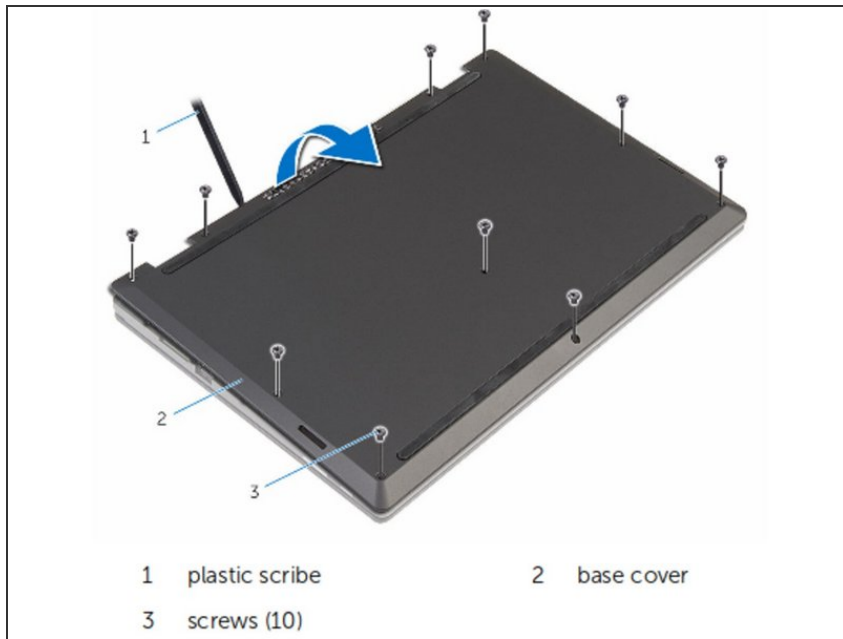
- Close the display and turn the computer over

Step 2 — Secure the Base



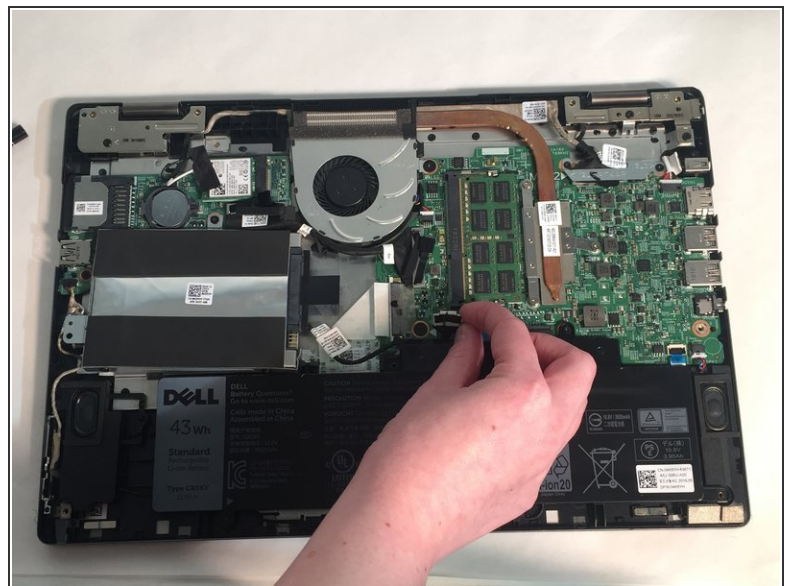
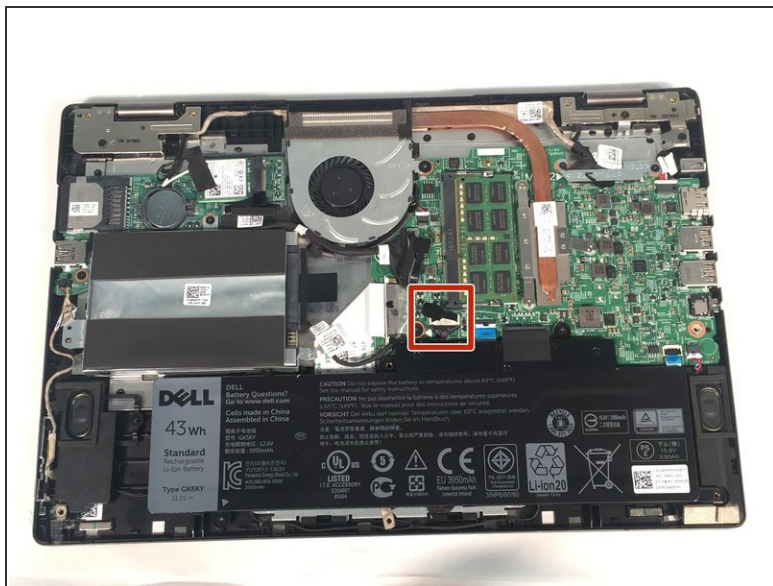
- Remove the screws that secure the base cover to the computer base.

Step 3 — Pry the Base cover



- Using a plastic scribe (plastic opening tool), pry the base cover off the computer base.

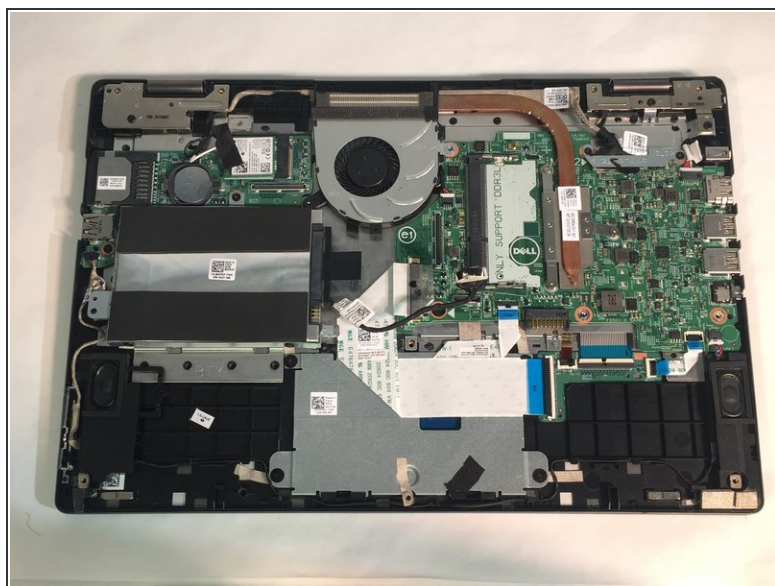
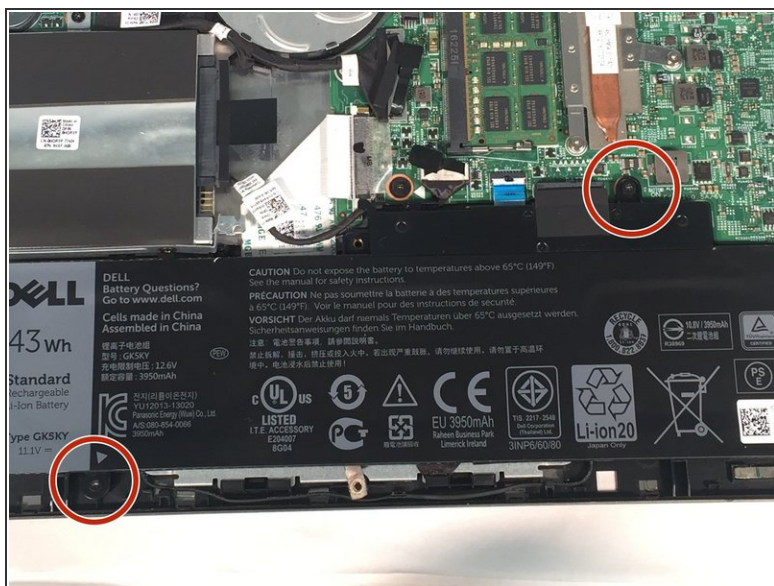
Step 4 — RAM



i Before opening device, ensure that all data is backed up on a hard drive to prevent data loss.

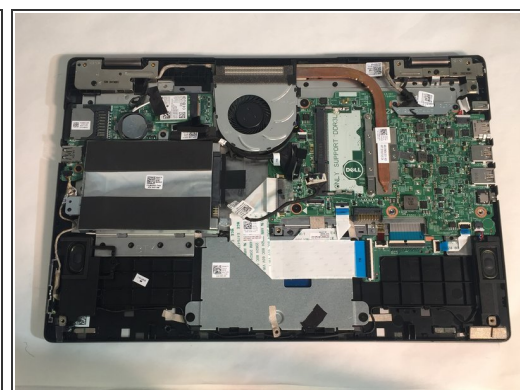
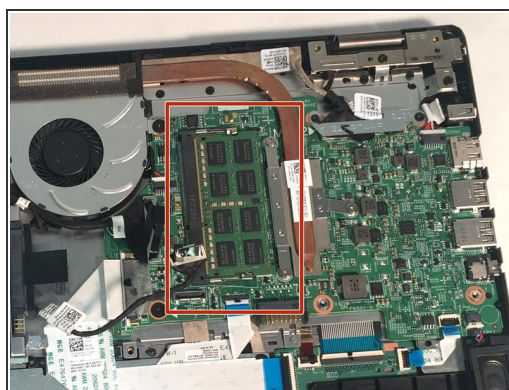
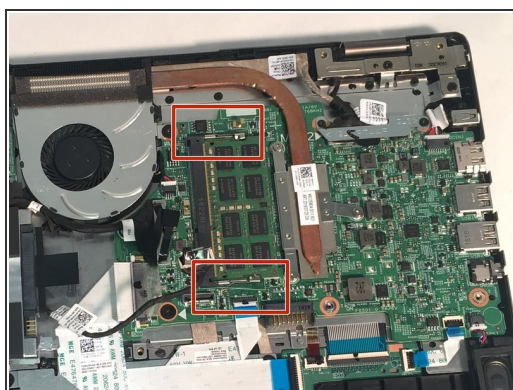
- Loosen and then unplug the hard drive cable.

Step 5



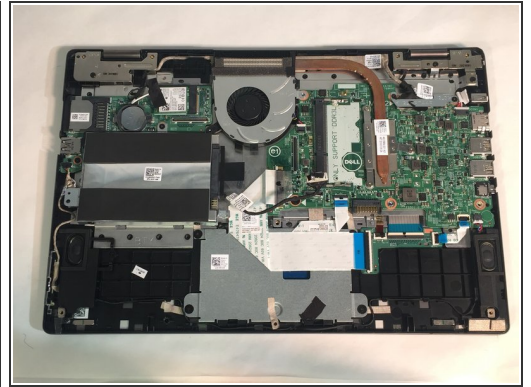
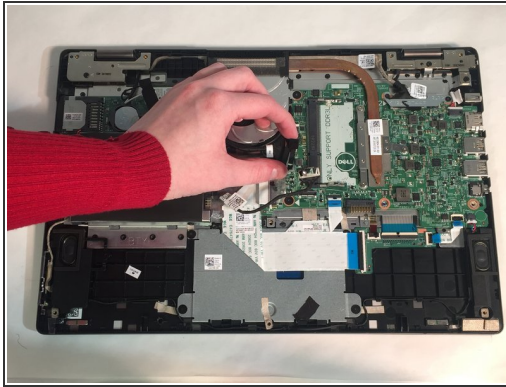
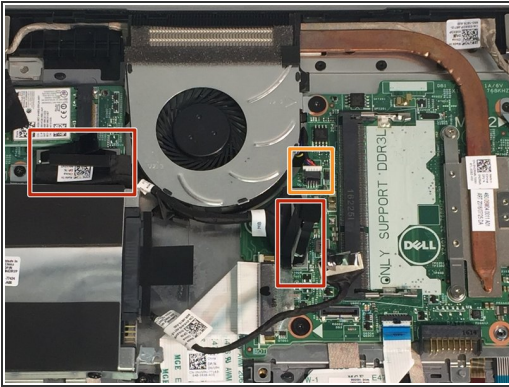
- Remove 2 M2 3mm screws, using the Phillips 1 screwdriver.
- Remove the battery.

Step 6



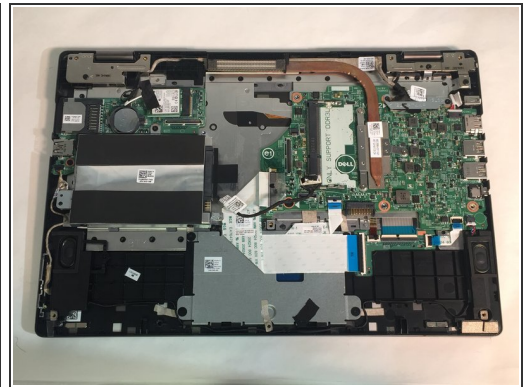
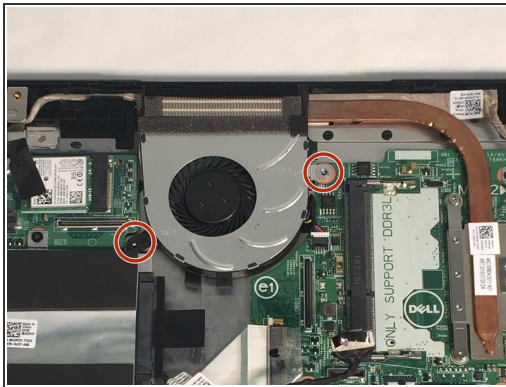
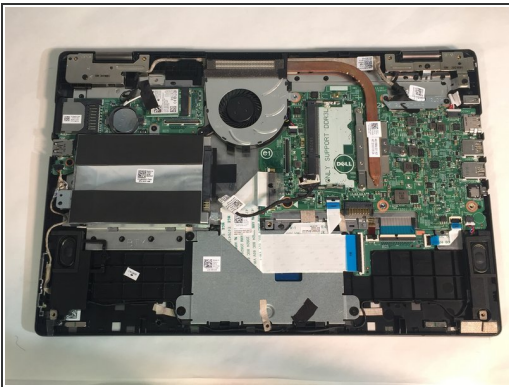
- Pry open the clips and remove the RAM.

Step 7 — Fan



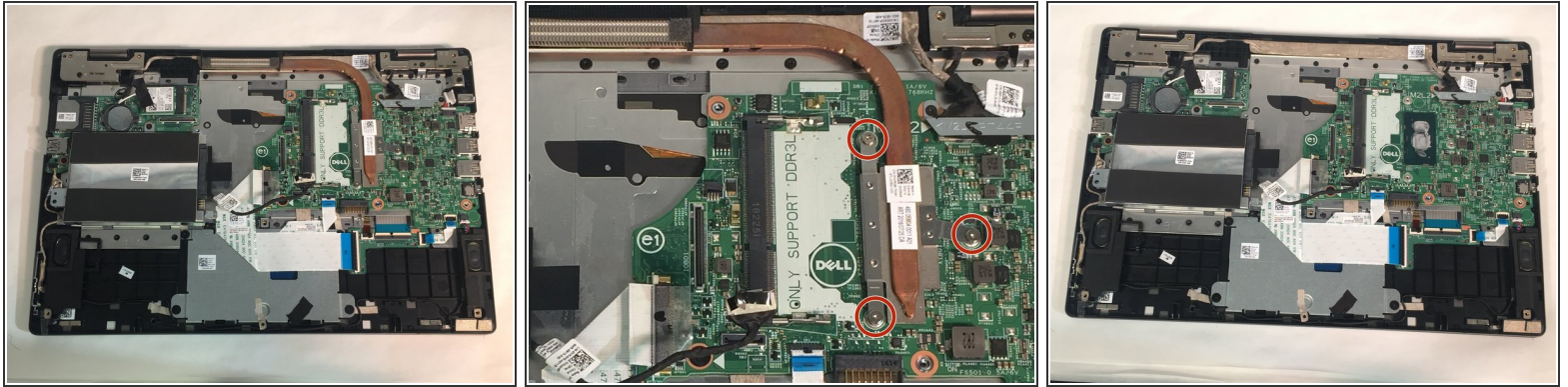
- Unplug the daughter board cable in two places marked in red, then remove it.
- Unplug the fan cable marked in orange.

Step 8



- Remove 1 MR 3mm screw, using the Phillips 1 screwdriver, on the cooling fan.
- Remove 1 M2 2mm wafer screw, using the Phillips 1 screwdriver, on the cooling fan.
- Remove the cooling fan.

Step 9 — Heat Sink



- Remove 3 M2 2mm screws, using the Phillips 0 screwdriver, on the heat sink.
- Remove the heat sink.

To reassemble your device, follow these instructions in reverse order.