



Dell Inspiron 13-7359 Battery Replacement

Replace your device's dying battery to bring it back to life.

Written By: Valentin Medina



INTRODUCTION

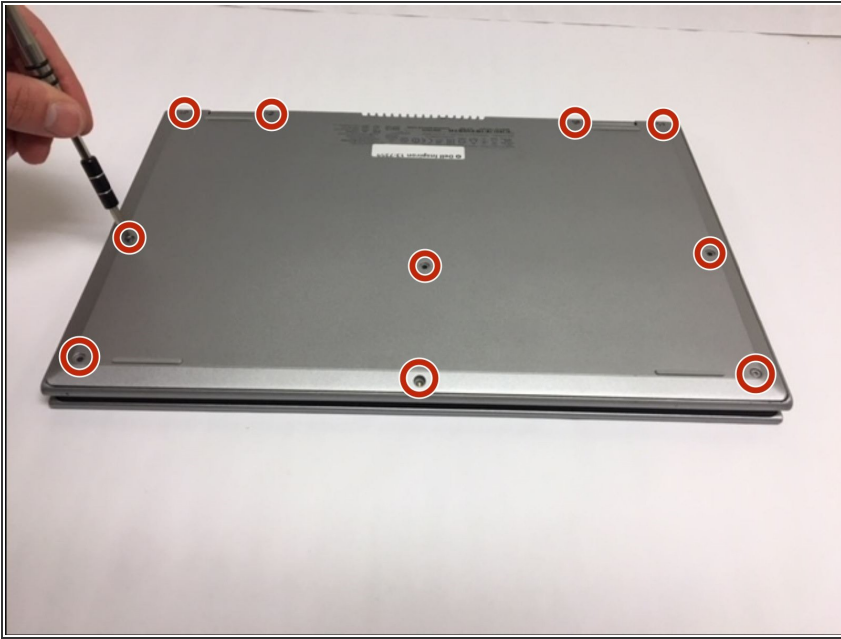
This guide will show you how to replace your device's battery without any hiccups. You will need one Phillips #0 screwdriver and one plastic spudger.



TOOLS:

- [Phillips #0 Screwdriver](#) (1)
 - [Spudger](#) (1)
-

Step 1 — Battery



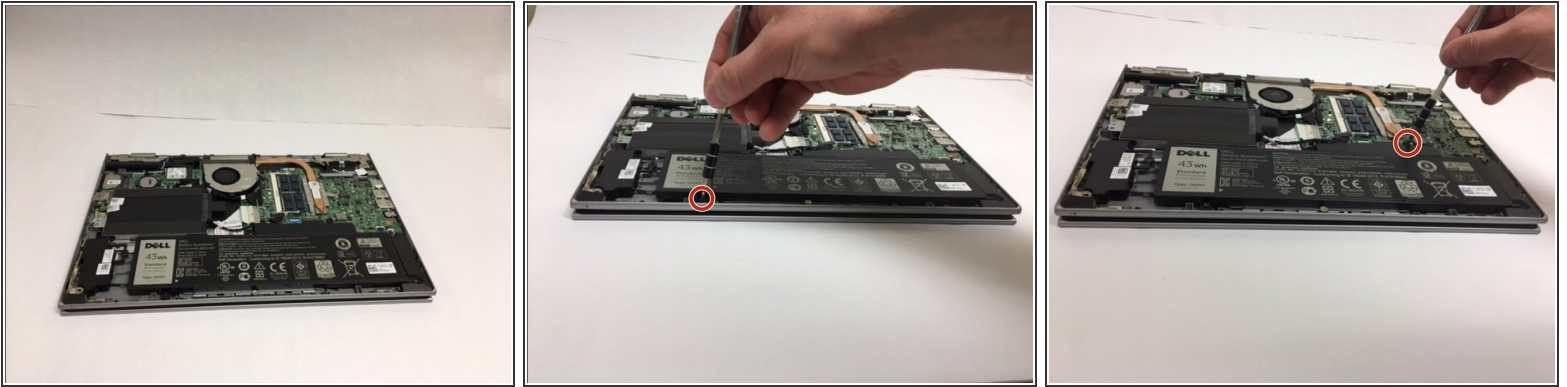
- First flip over the laptop to expose the back panel
- Use a Phillips #0 screwdriver to unscrew all ten 7mm Phillips head screws holding the back panel in place.

Step 2



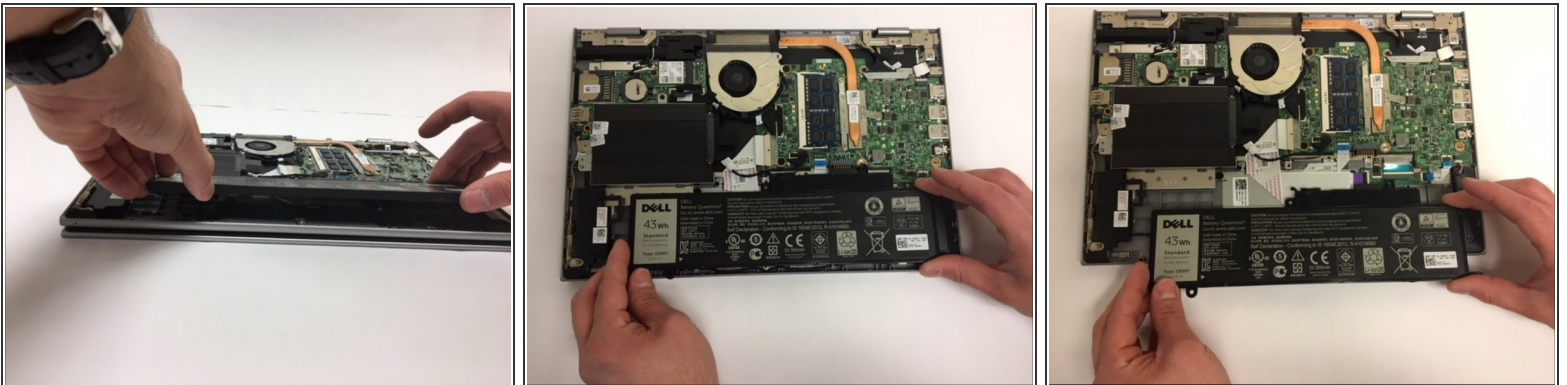
- With a plastic spudger, carefully remove the back panel by prying each corner off individually
- Slowly pick up the panel and set it aside

Step 3



- The battery will be the largest black component in the device located near the bottom edge. Using a Phillips #0 screwdriver, unscrew the two 3mm Phillips head screws holding in the battery.

Step 4



- To remove the old battery, slightly lift the bottom edge of the battery with your hands
- Now slowly pull the battery towards you to fully detach the battery

To reassemble your device, follow these instructions in reverse order.