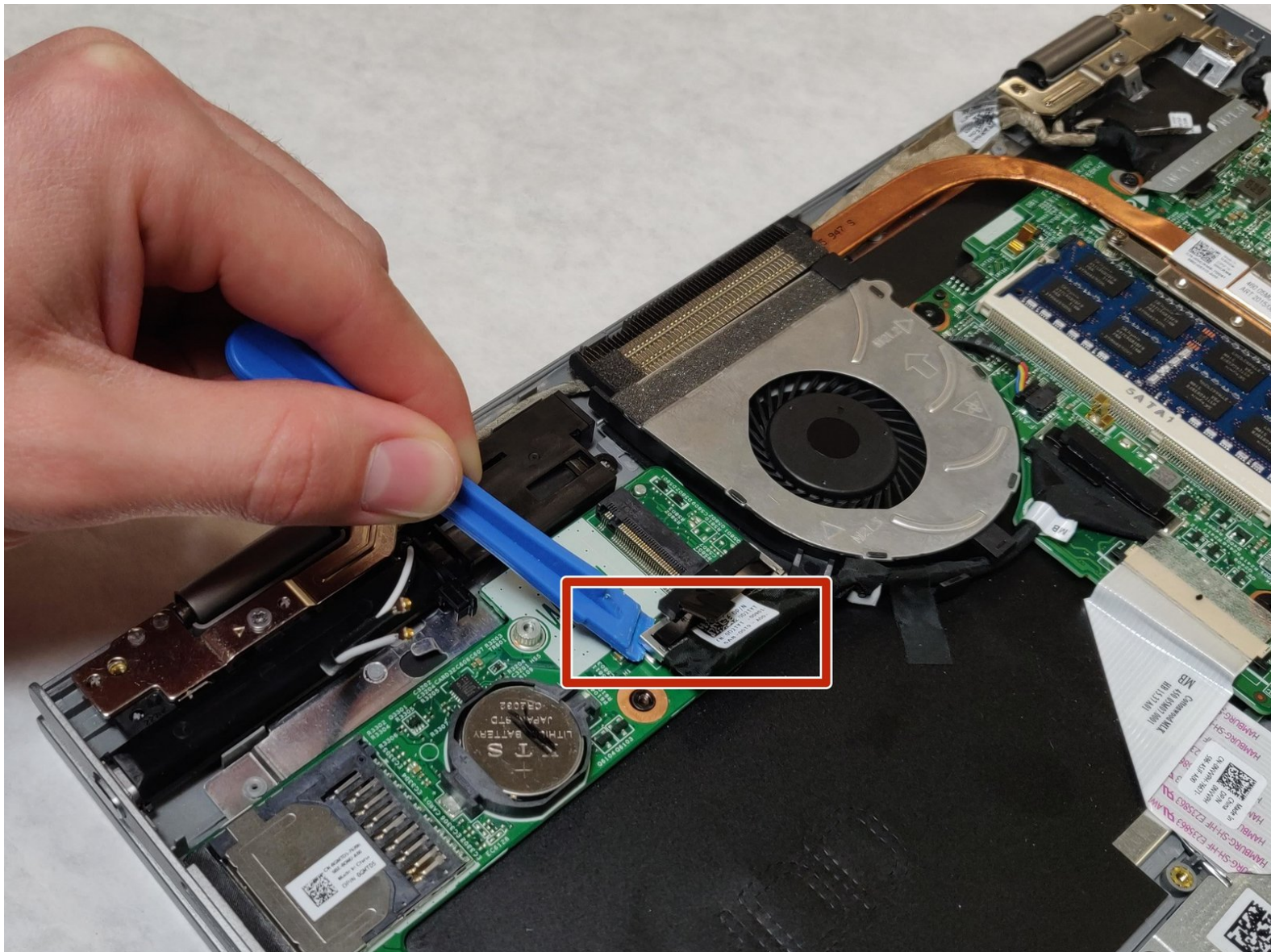




# Dell Inspiron 13-7359 USB/SD Card Reader IO Circuit Board Replacement

How to replace the USB/SD Card Reader IO Circuit Board in Dell Inspiron 13-7359.

Written By: Bo Yi Lim



---

## INTRODUCTION

Use this guide to replace your USB/SD Card Reader IO Circuit Board. You will need a Phillips #0 screwdriver and a plastic opening tool to complete this guide.

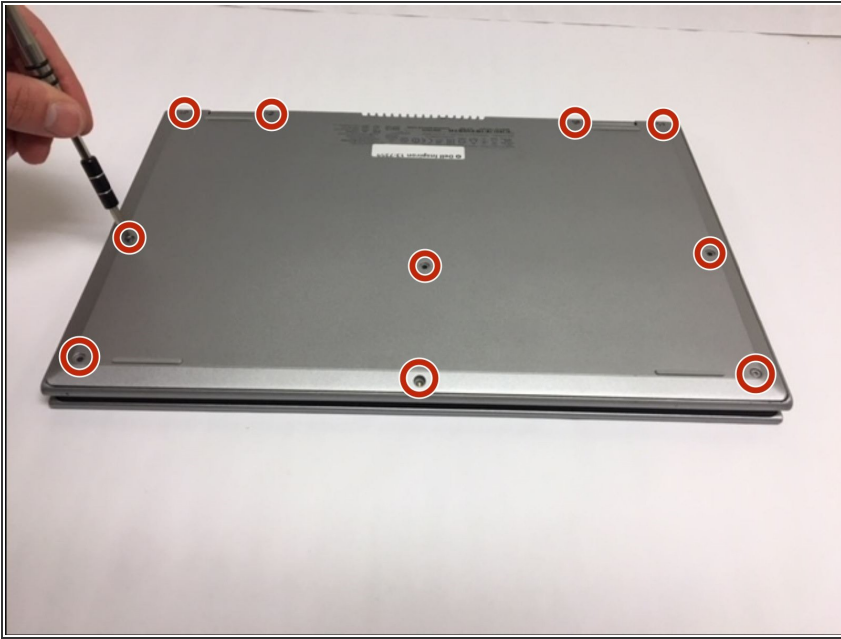
---



### TOOLS:

- [Phillips #0 Screwdriver](#) (1)
  - [iFixit Opening Tools](#) (1)
  - [Spudger](#) (1)
-

## Step 1 — Battery



- First flip over the laptop to expose the back panel
- Use a Phillips #0 screwdriver to unscrew all ten 7mm Phillips head screws holding the back panel in place.

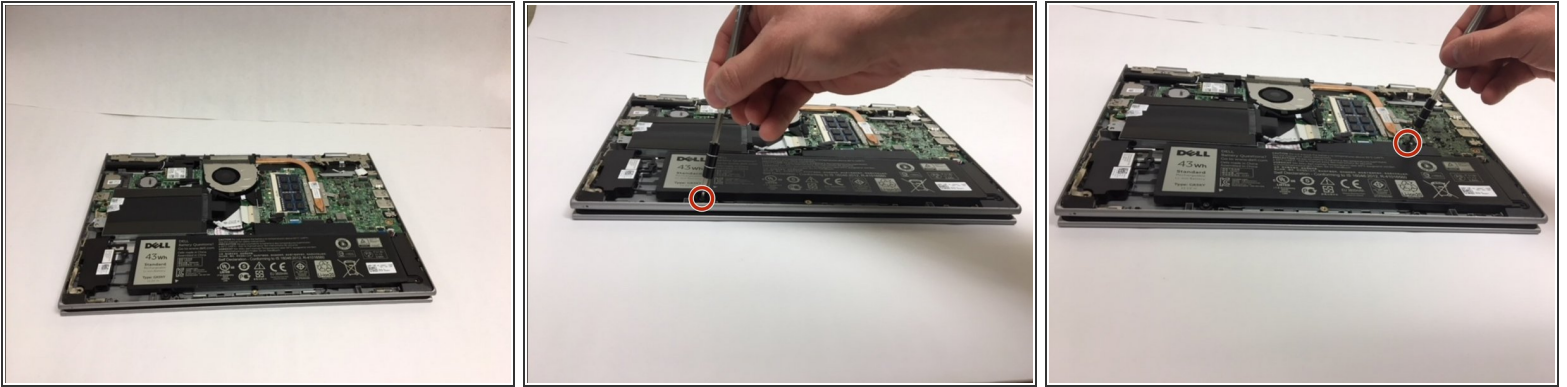
## Step 2



- With a plastic spudger, carefully remove the back panel by prying each corner off individually
- Slowly pick up the panel and set it aside

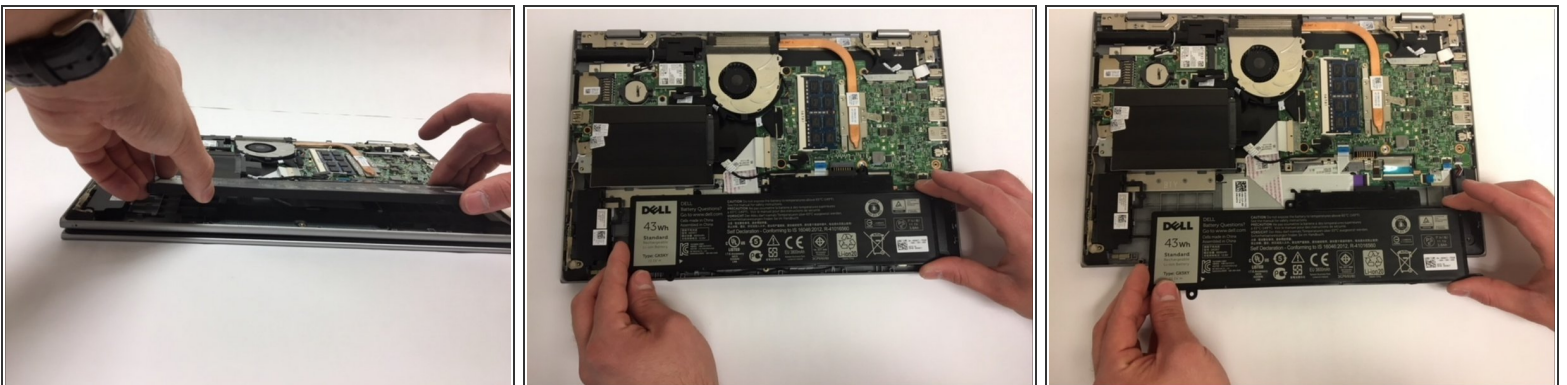


## Step 3



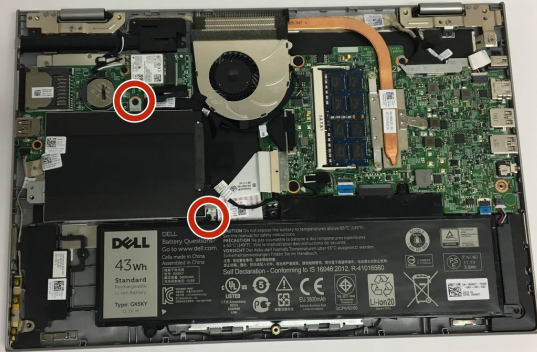
- The battery will be the largest black component in the device located near the bottom edge. Using a Phillips #0 screwdriver, unscrew the two 3mm Phillips head screws holding in the battery.

## Step 4



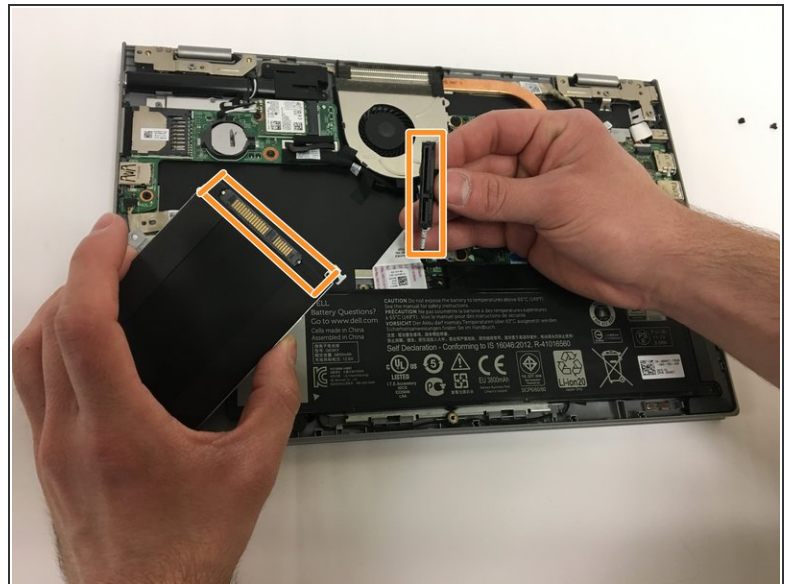
- To remove the old battery, slightly lift the bottom edge of the battery with your hands
- Now slowly pull the battery towards you to fully detach the battery

## Step 5 — Hard Drive



- Unscrew and remove the 2 of the 3mm Phillips head screws holding the hard drive in place.

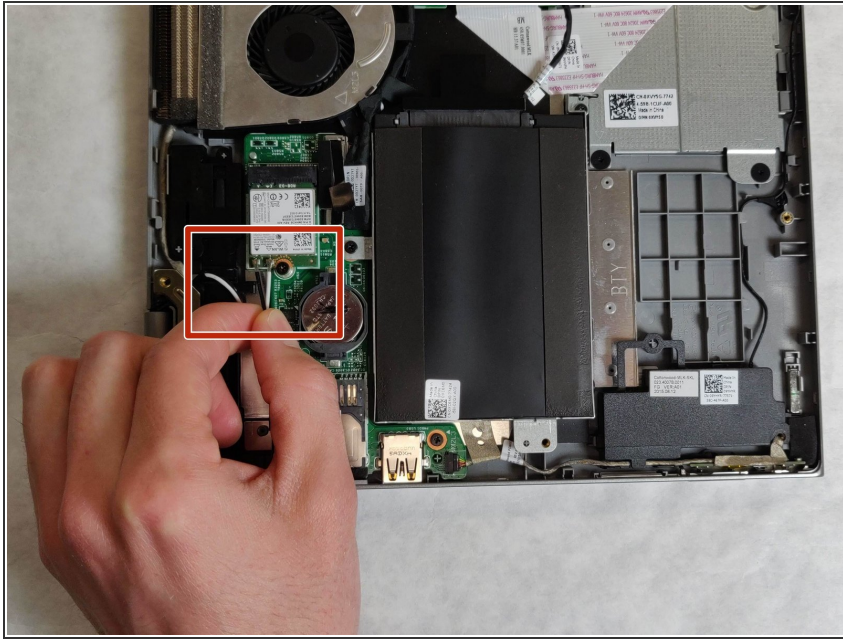
## Step 6



- Lift and hold the hard drive in your left hand.
- Use your right hand to grab hold of the black wire connector attached on the right of the hard drive.
- Carefully pull the connector away from the hard drive to completely disconnect from the laptop.

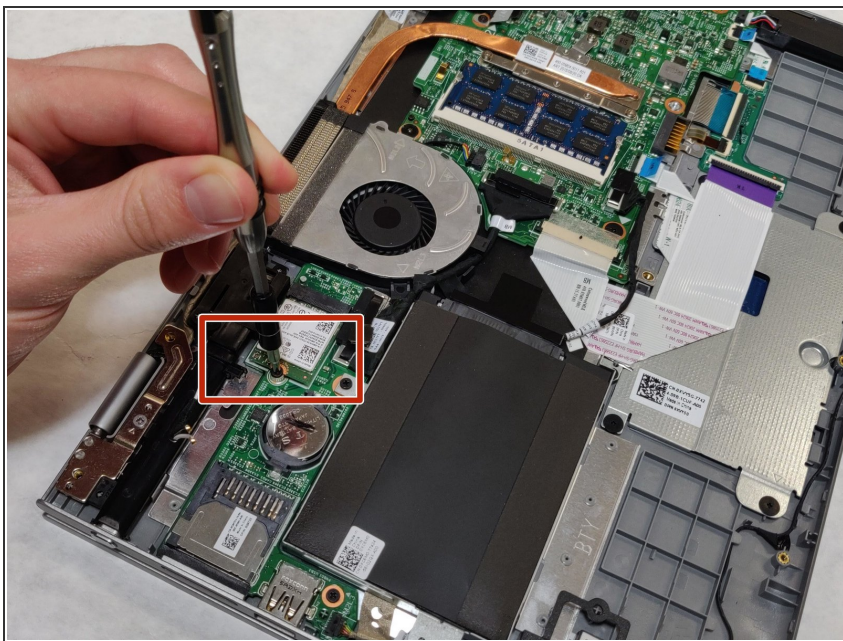


## Step 7 — WLAN Adaptor



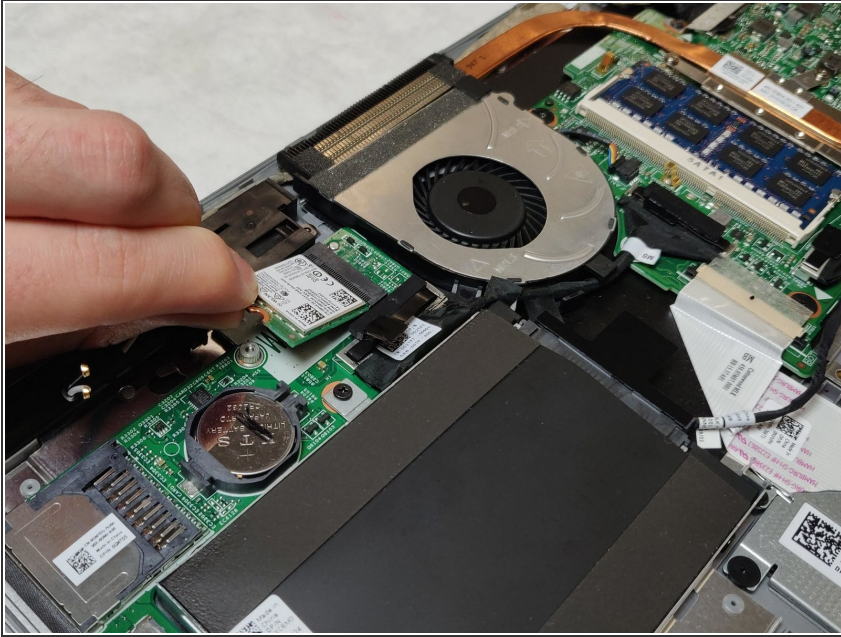
- Unhook both of the wires attached to the WLAN adaptor.

## Step 8



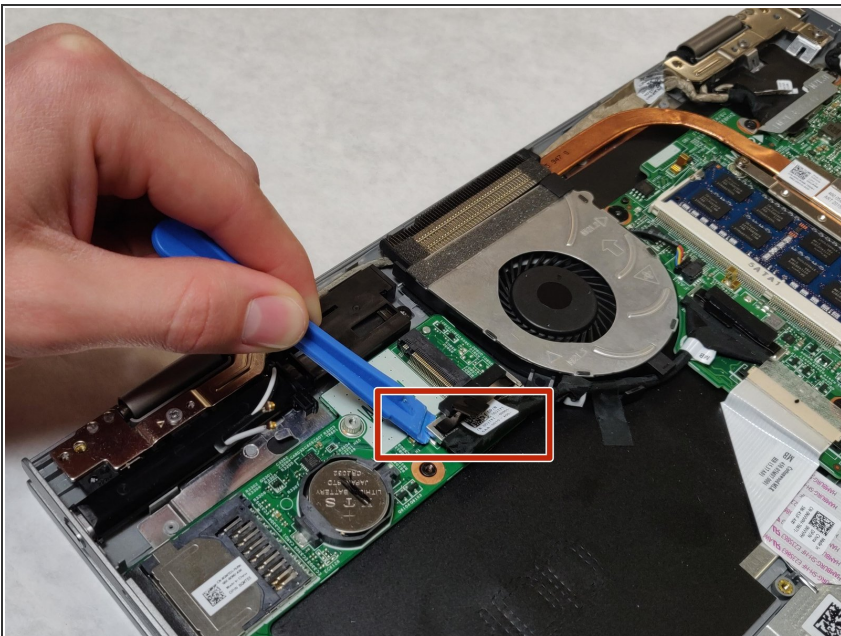
- Remove the 3.9mm Phillips screw using Phillips #0 screwdriver.
- Once the screw is removed, one end of the WLAN adaptor will raise up.

## Step 9



- Gently remove the WLAN adaptor.

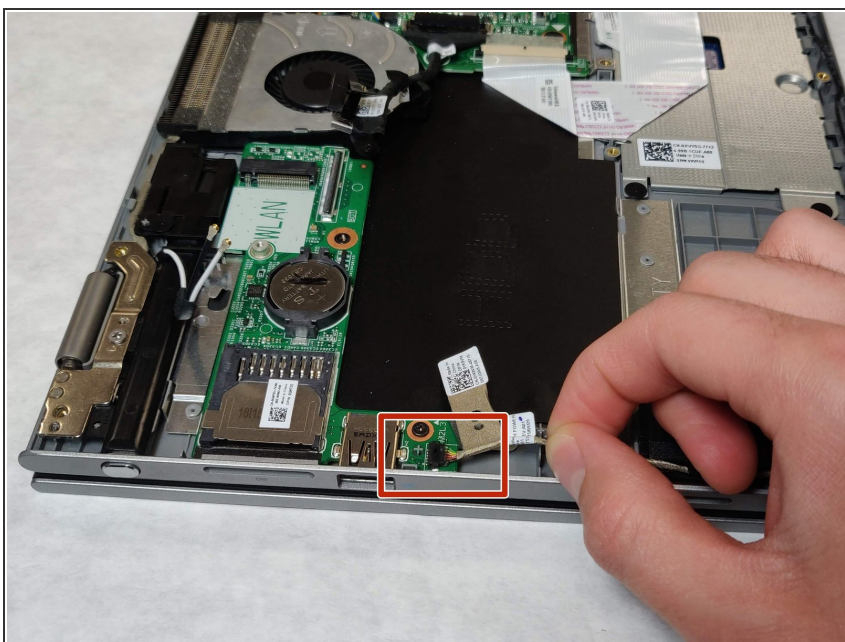
## Step 10 — USB/SD Card Reader IO Circuit Board



- Using the plastic opening tool, unhook the black cable as shown.



## Step 11



- Gently pull to unplug the speaker cable.

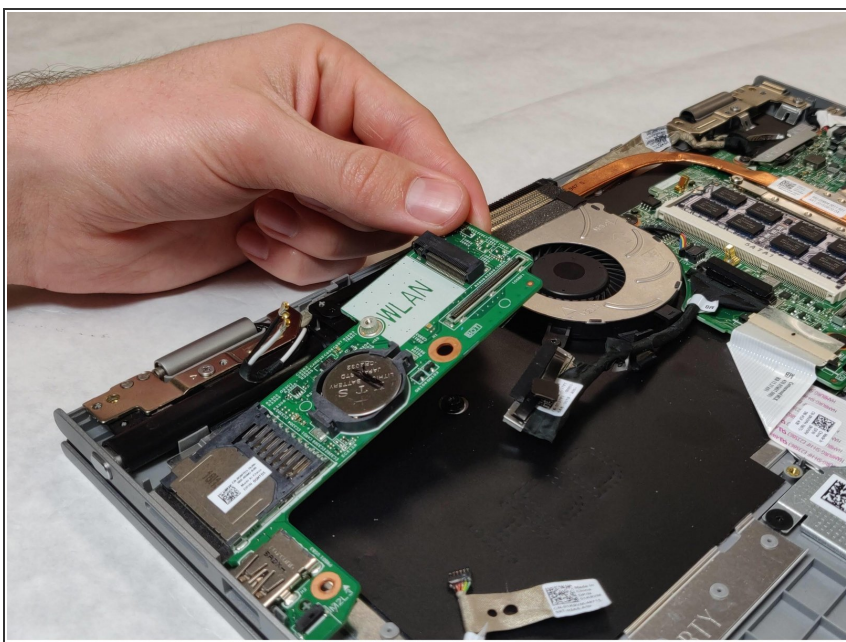
## Step 12



- Using the Phillips #0 screwdriver, remove the 3.9mm Phillips screw as shown.



## Step 13



- Gently raise the USB/SD Card Reader IO Circuit Board and pull the part free from the device.

To reassemble your device, follow these instructions in reverse order.