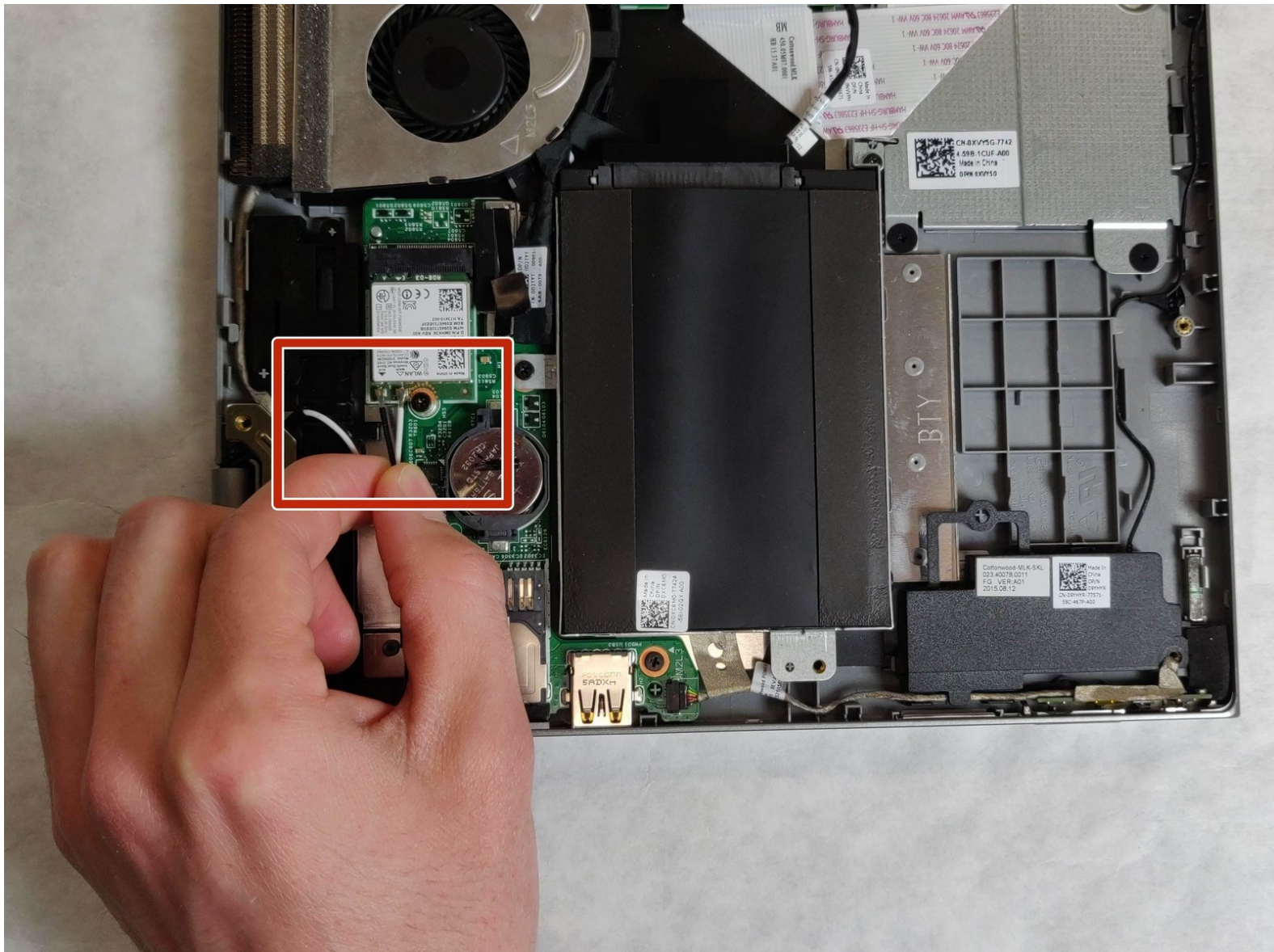




# Dell Inspiron 13-7359 WLAN Adaptor Replacement

How to replace the WLAN Adaptor in a Dell Inspiron 13-7359.

Written By: Bo Yi Lim



---

## INTRODUCTION

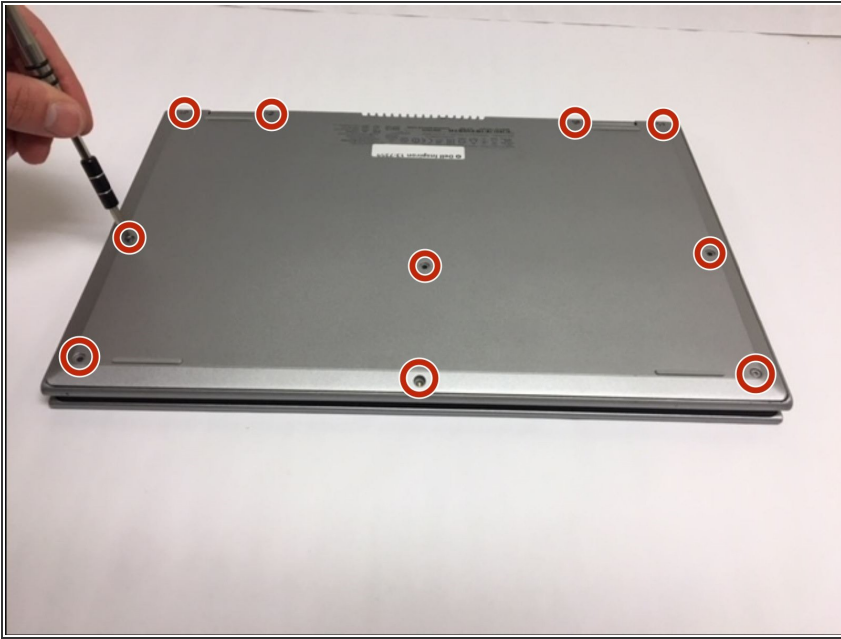
Use this guide to replace your WLAN adaptor. You will need a Phillips #0 screwdriver and a plastic opening tool to complete this guide.



### TOOLS:

- [Spudger](#) (1)
  - [Phillips #0 Screwdriver](#) (1)
  - [iFixit Opening Tools](#) (1)
-

## Step 1 — Battery



- First flip over the laptop to expose the back panel
- Use a Phillips #0 screwdriver to unscrew all ten 7mm Phillips head screws holding the back panel in place.

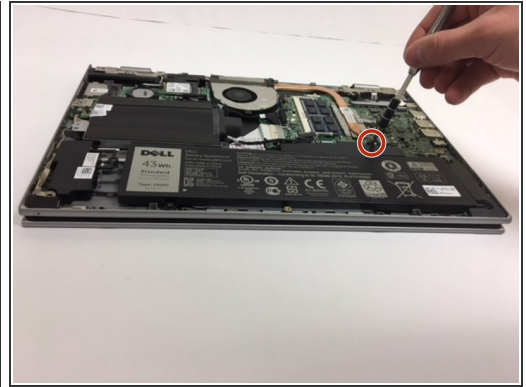
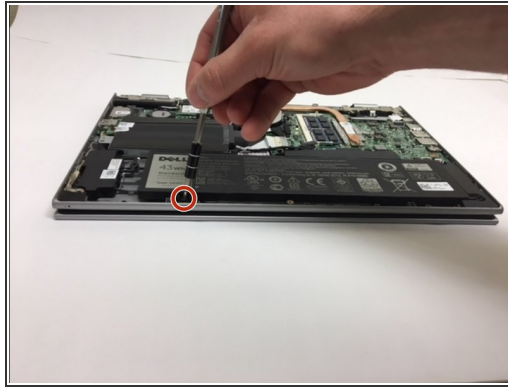
## Step 2



- With a plastic spudger, carefully remove the back panel by prying each corner off individually
- Slowly pick up the panel and set it aside

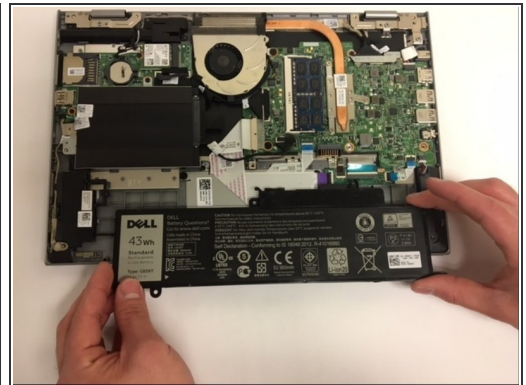
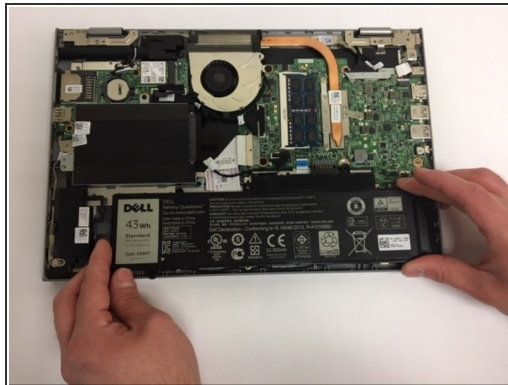
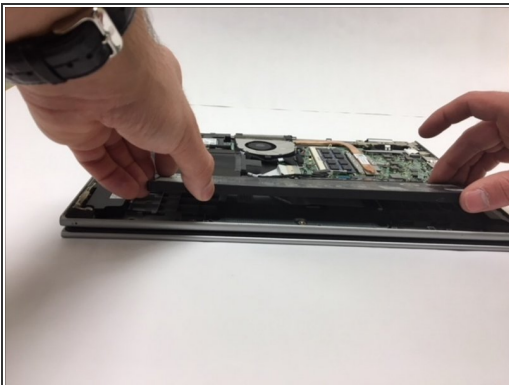


## Step 3



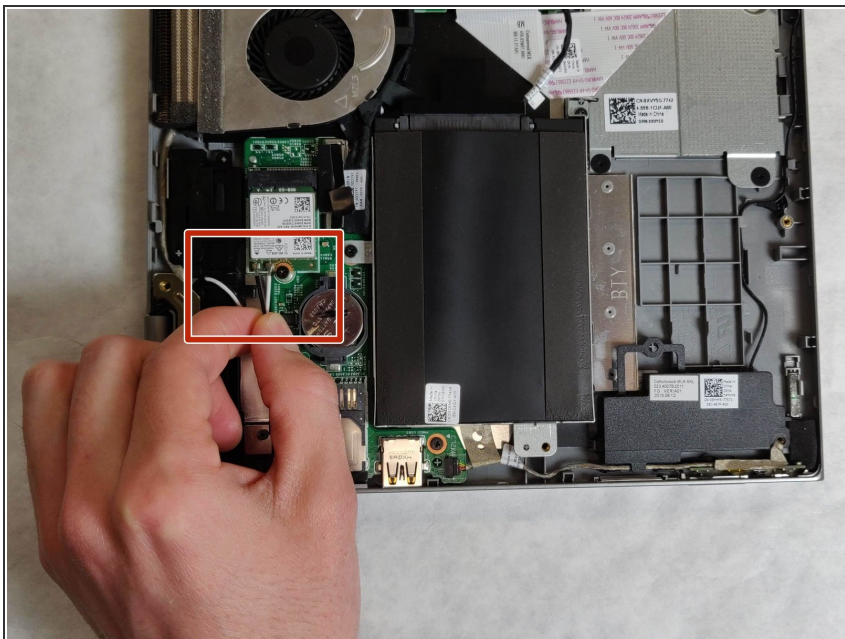
- The battery will be the largest black component in the device located near the bottom edge. Using a Phillips #0 screwdriver, unscrew the two 3mm Phillips head screws holding in the battery.

## Step 4



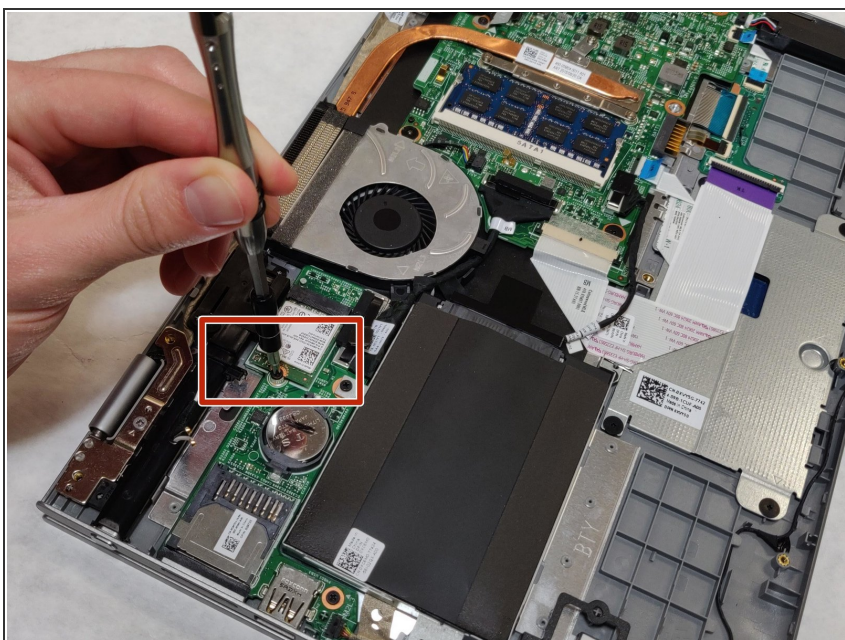
- To remove the old battery, slightly lift the bottom edge of the battery with your hands
- Now slowly pull the battery towards you to fully detach the battery

## Step 5 — WLAN Adaptor



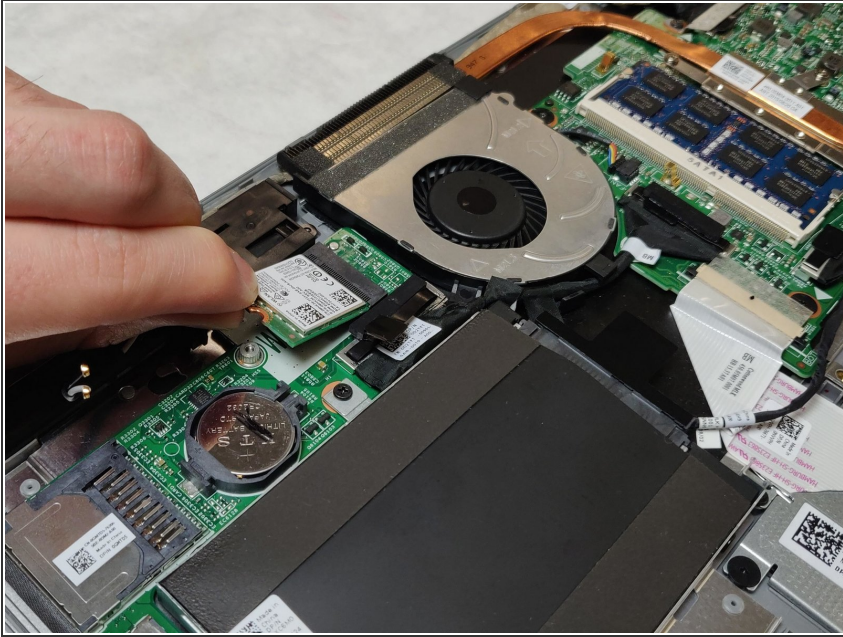
- Unhook both of the wires attached to the WLAN adaptor.

## Step 6



- Remove the 3.9mm Phillips screw using Phillips #0 screwdriver.
- Once the screw is removed, one end of the WLAN adaptor will raise up.

## Step 7



- Gently remove the WLAN adaptor.

To reassemble your device, follow these instructions in reverse order.