



Dell Inspiron 1318 Display Assembly Replacement

Written By: Terrence15



INTRODUCTION

In this guide, we will be showing you how to remove and replace the Display Assembly.



TOOLS:

- [Essential Electronics Toolkit](#) (1)
-

Step 1 — Removing the Antenna Cables



- Make note of the cable routing and carefully remove the antenna cables from their routing guides. Pull the cables with their connectors through the system board so that they are clear of the computer base.

Step 2 — Removing the Screws



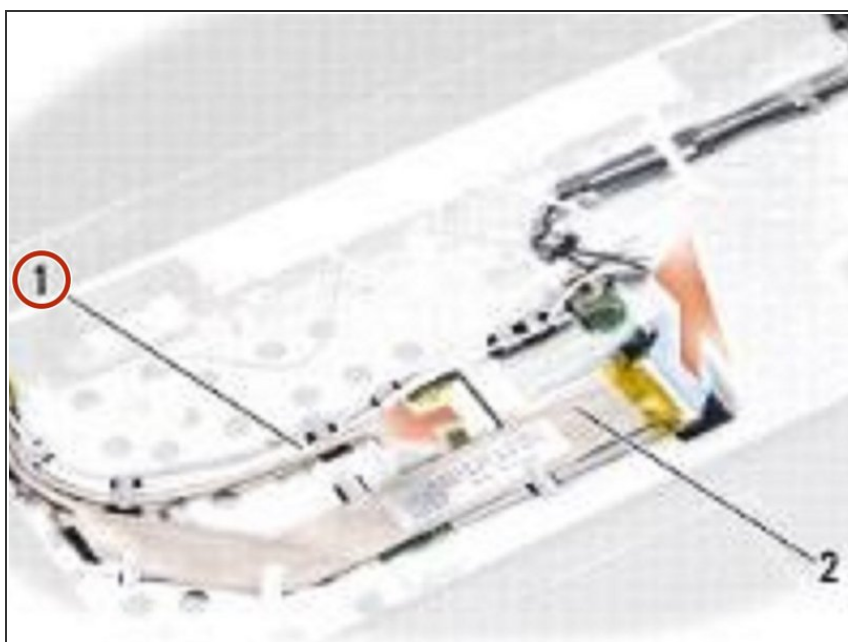
- Remove the two M2.5 x 5-mm screws from the computer base.
- ⓘ NOTE: Note how the display cable and the camera cable have been routed through their routing guides.

Step 3 — Disconnecting the Display Cable



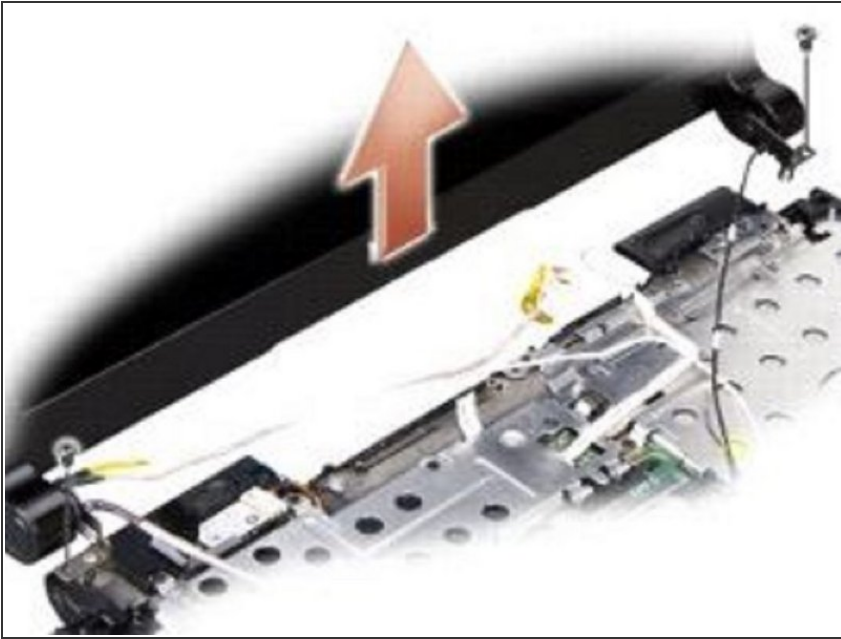
- Pull the display cable tab to disconnect the display cable from the system board connector.

Step 4 — Disconnecting the Camera Cable



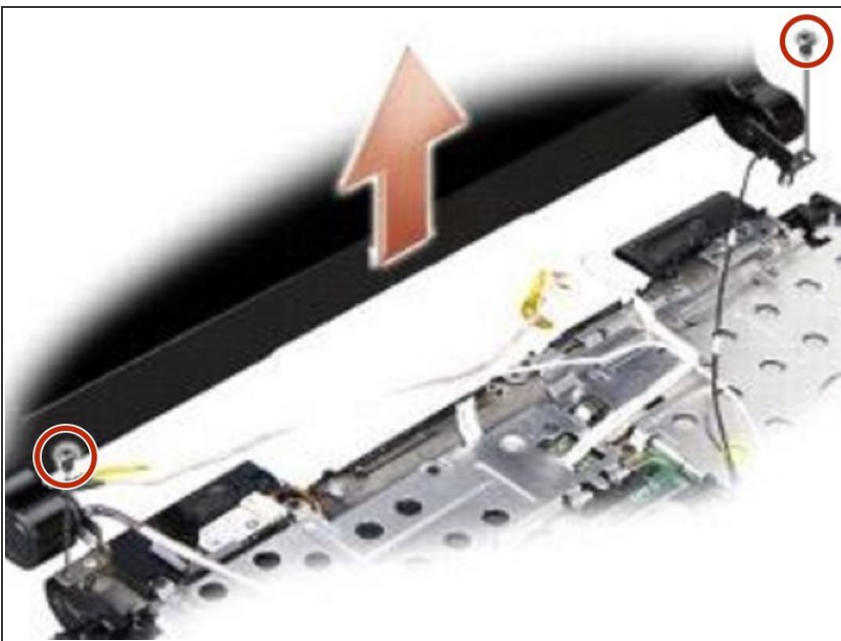
- Disconnect the camera cable from the system board connector.

Step 5 — Dislodging the Cables



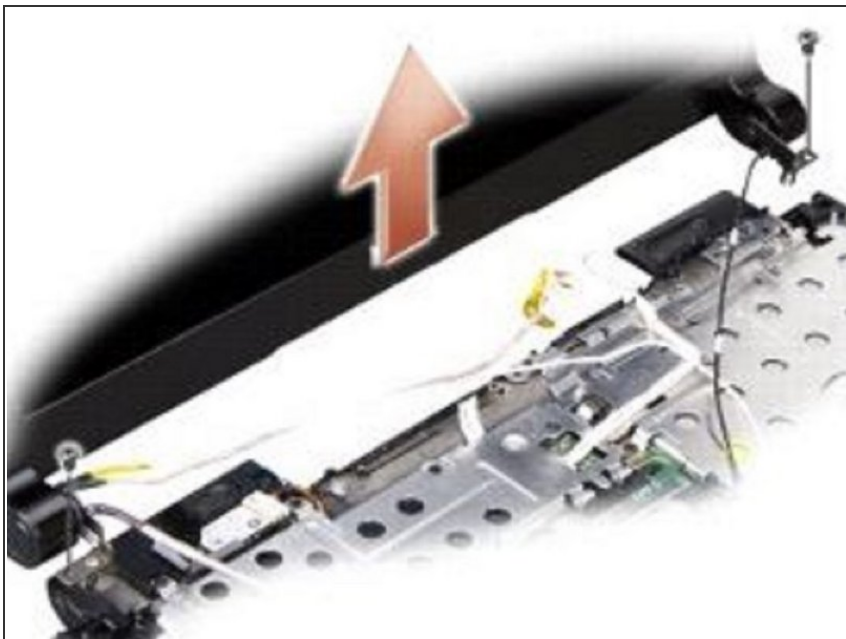
- Make note of the cable routing and carefully dislodge the antenna cables and the rest of the cables from their routing guides. Pull the cables away, so that they are clear of the palm rest.

Step 6 — Remove the Screws



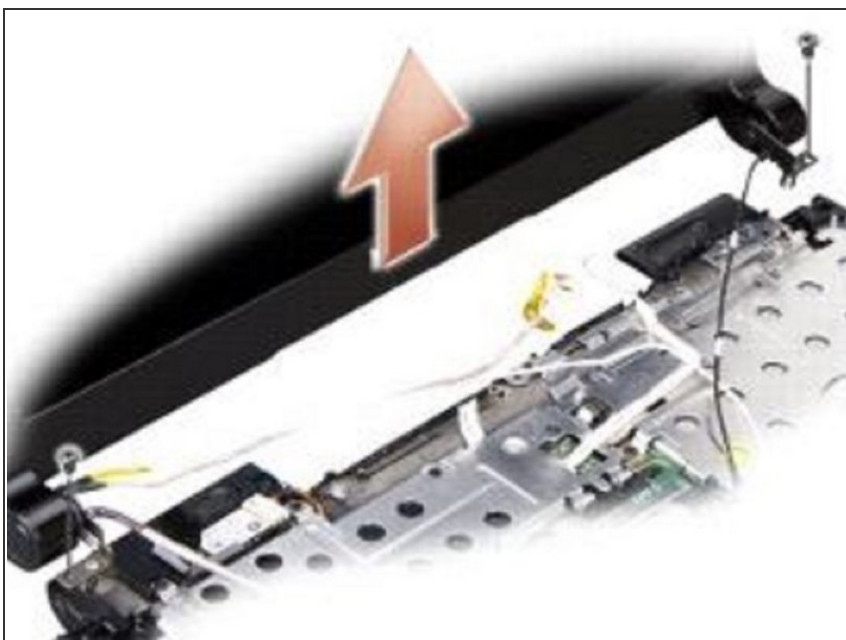
- Remove the two M2.5 x 5-mm screws from either side of the display assembly.

Step 7 — Removing the Display Assembly



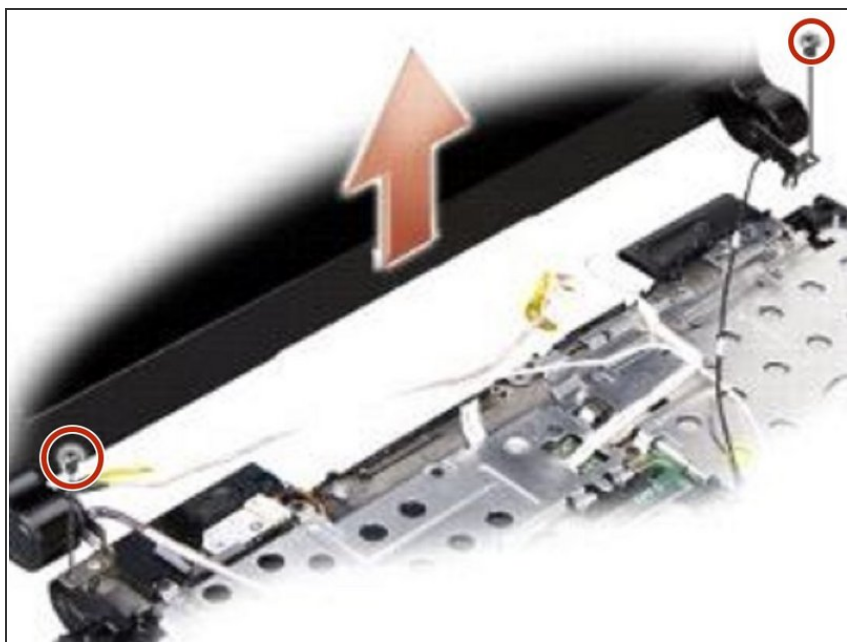
- Lift and remove the display assembly from the computer base.

Step 8 — Routing the Cables



- Route and connect the display cable to the connector on the system board.
- Route and connect the camera cable to the connector on the system board.
- Carefully route the WLAN antenna cables into their routing guides on the palm rest and through the computer base.

Step 9 — Replace the Screws



- Replace the two M2.5 x 5-mm screws on each side of the display assembly.

Step 10 — Turn the Computer Over



- Turn the computer over and replace the two M2.5 x 5-mm screws on the computer base.

Step 11 — Routing the Cables



- Carefully route the WLAN card antenna cables through their routing guides and connect them to the WLAN card.