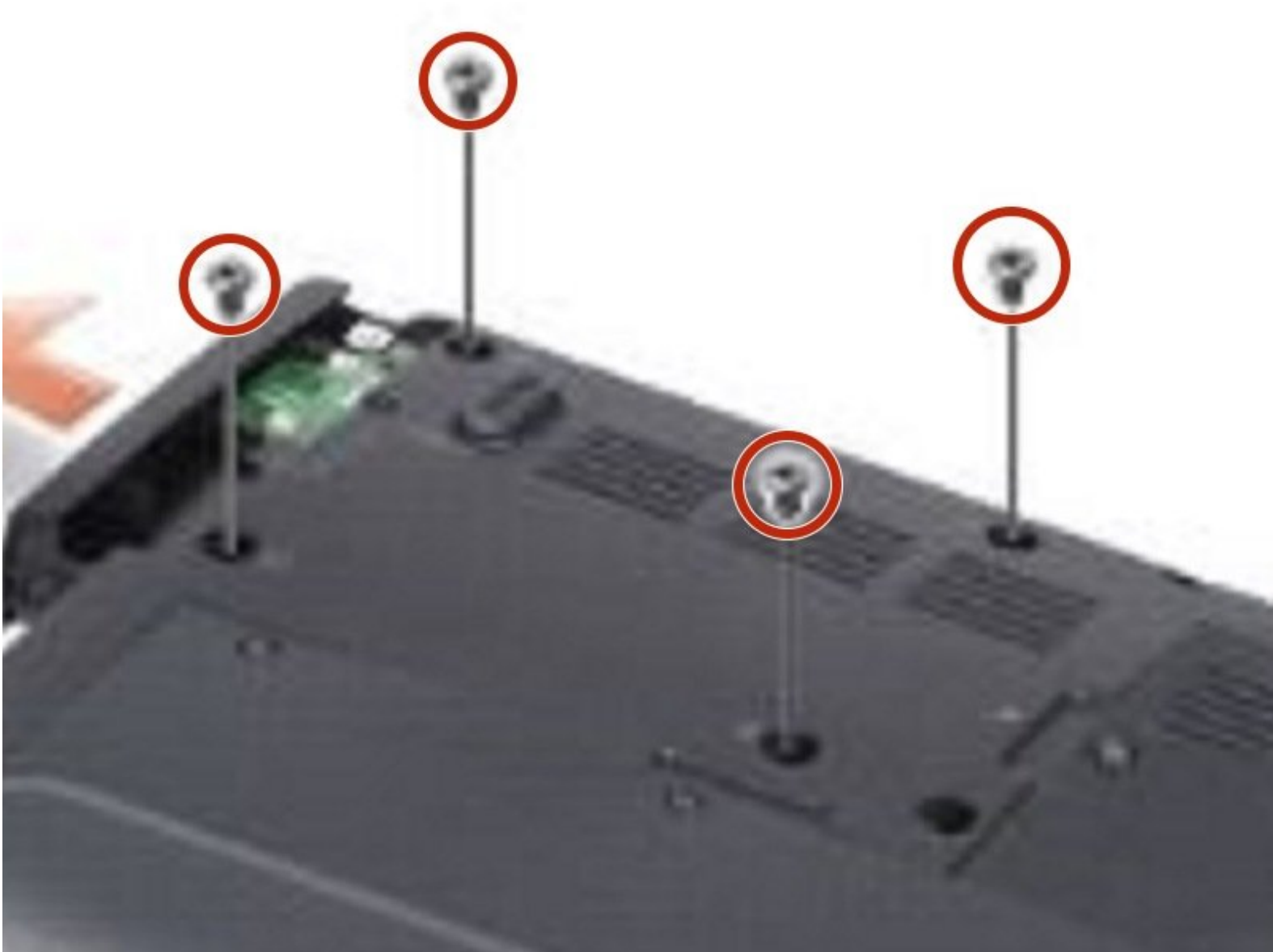




Dell Inspiron 1318 Hard Drive Replacement

Written By: Terrence15



INTRODUCTION

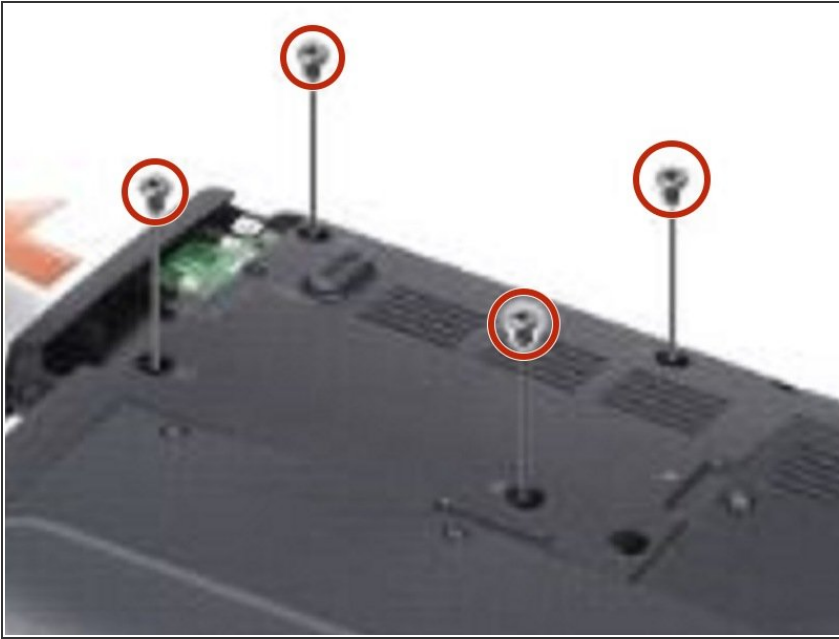
In this guide, we will show you how to remove and replace the Hard Drive.



TOOLS:

- [Phillips #0 Screwdriver](#) (1)
-

Step 1 — Remove the Screws

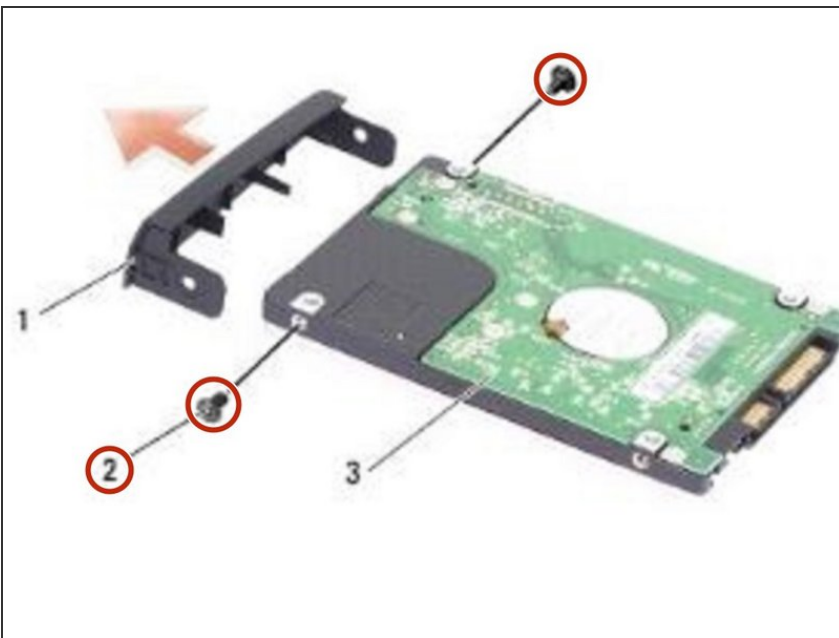


⚠ CAUTION: Before you begin any of the procedures in this section, follow the safety instructions shipped with your computer. Follow the procedures in [Before You Begin](#).

⚠ NOTICE: Hard drives are extremely fragile. Exercise care when handling the hard drive.

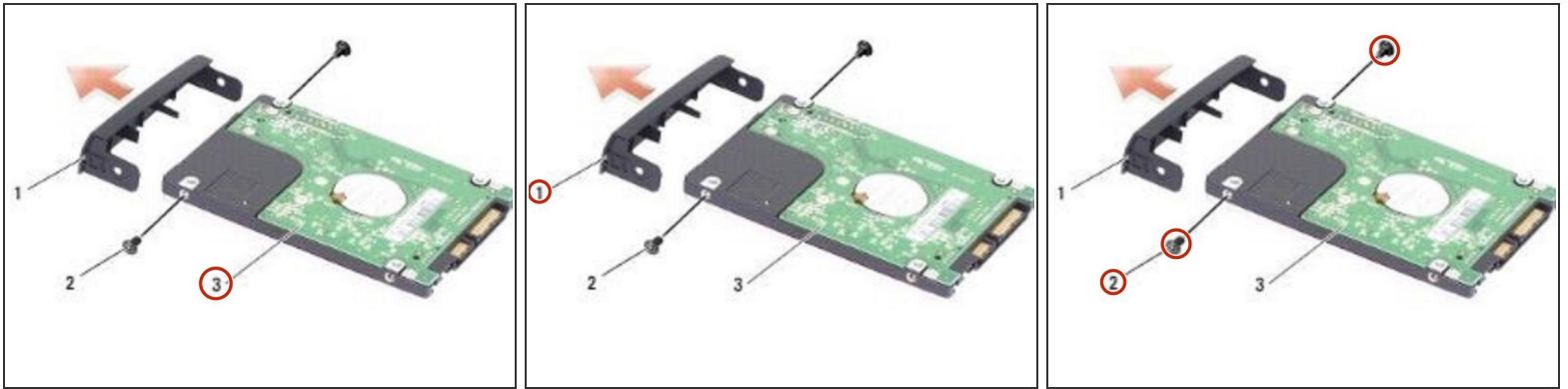
- Remove the four M3 x 3-mm screws and slide the hard drive away from the bay.

Step 2 — Remove the Screws



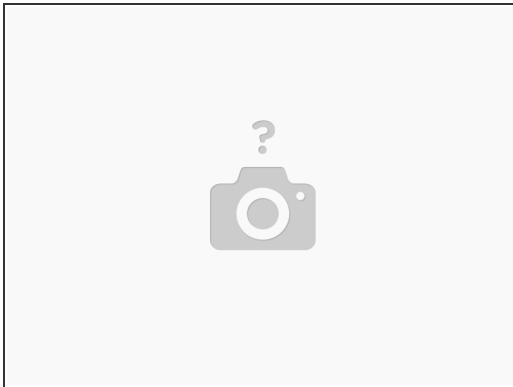
- Remove the two screws from either side of the hard drive bracket and pull the hard drive away from the bracket.

Step 3 — Placing the Hard Drive



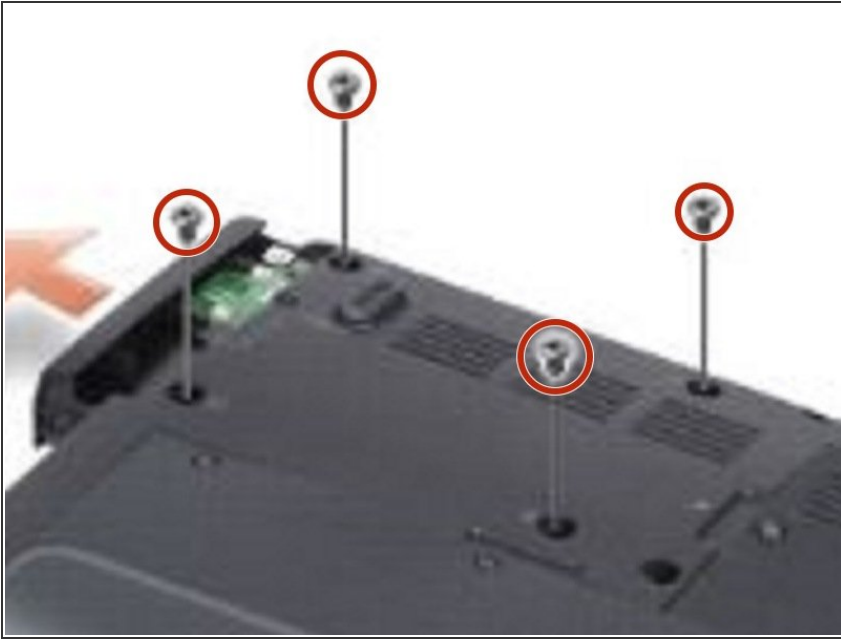
- Place the **NEW** hard drive in the bracket and replace the two M2 x 3-mm screws on either side.

Step 4 — Sliding the Hard Drive



- Slide the hard drive into the bay.

Step 5 — Replace the Four Screws



- Replace the four M3 x 3-mm screws on the hard drive.