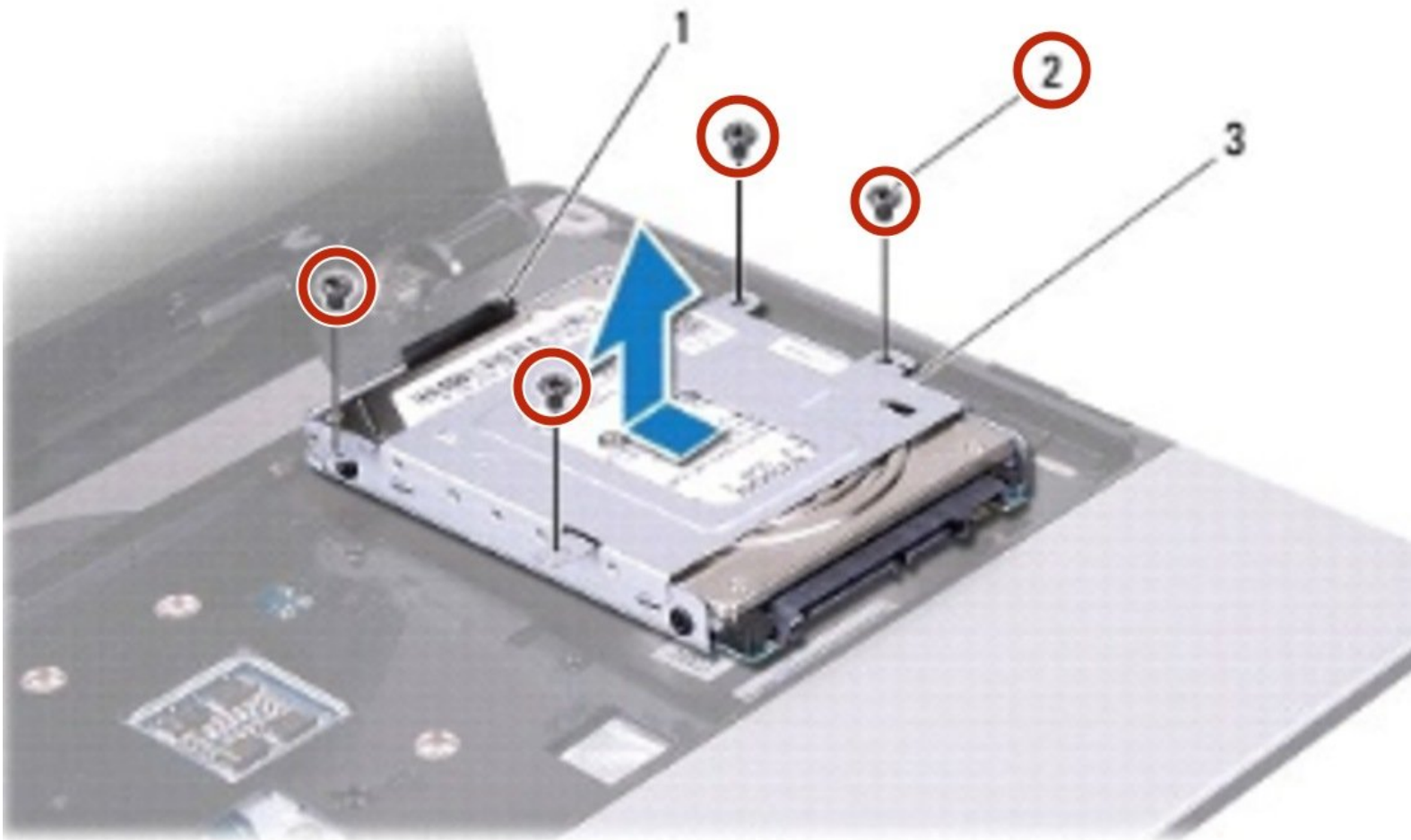




Dell Inspiron 1320 Hard Drive Replacement

Written By: Terrence15



INTRODUCTION

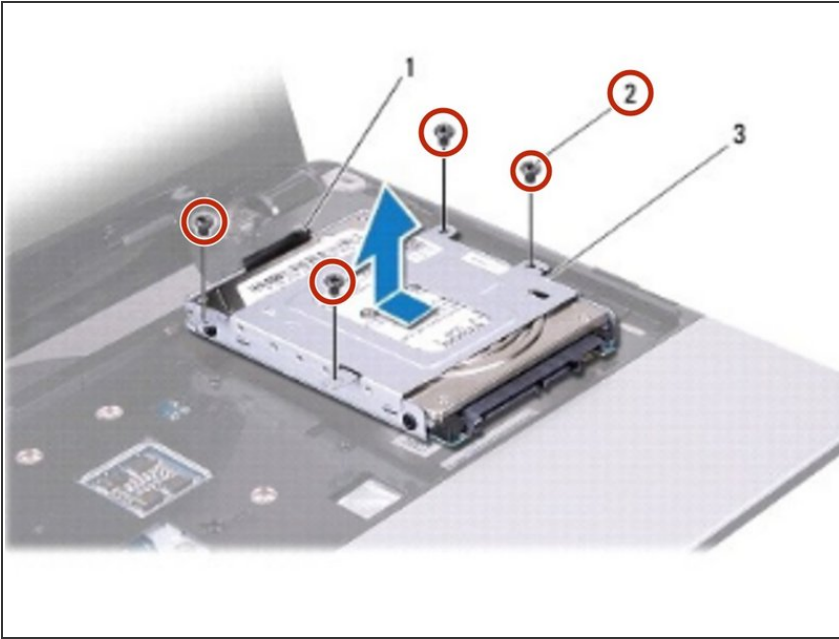
In this guide, we will show you how to remove and replace the Hard Drive.



TOOLS:

- [Essential Electronics Toolkit](#) (1)
-

Step 1 — Remove the Four Screws

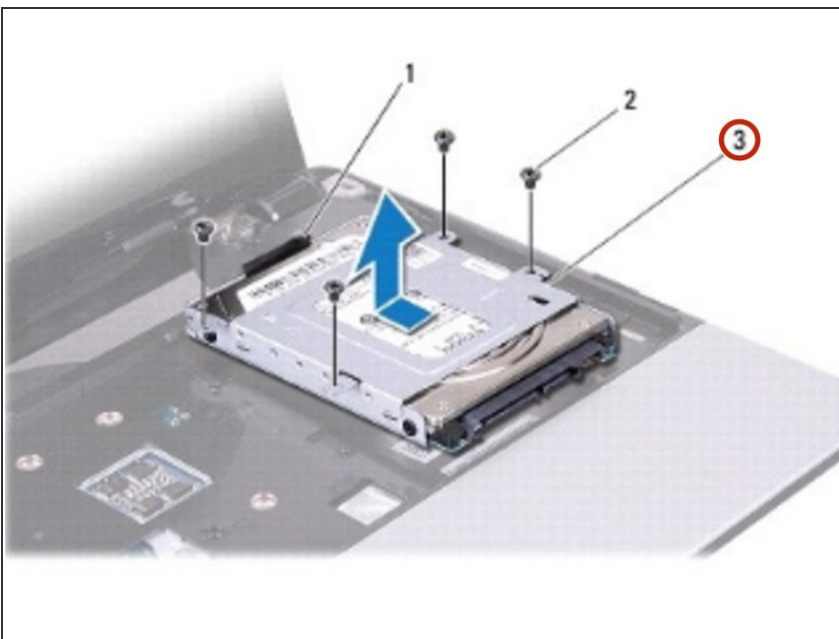


⚠ WARNING: Before working inside your computer, read the safety information that shipped with your computer. Follow the procedures in [Before You Begin](#).

⚠ CAUTION: To avoid electrostatic discharge, ground yourself by using a wrist grounding strap or by periodically touching an unpainted metal surface (such as a connector on your computer).

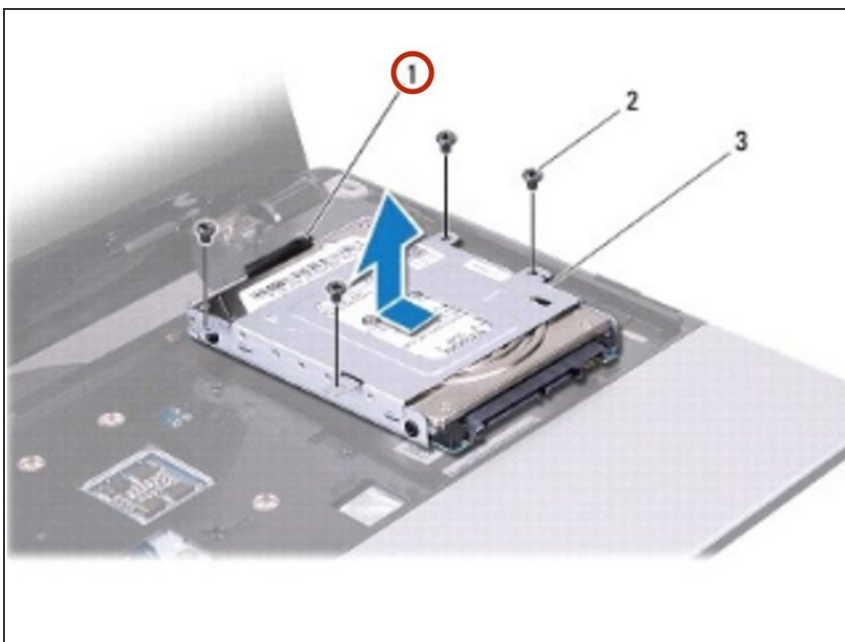
- Remove the four screws that secure the hard drive assembly to the computer base.

Step 2 — Sliding the Hard Drive Assembly



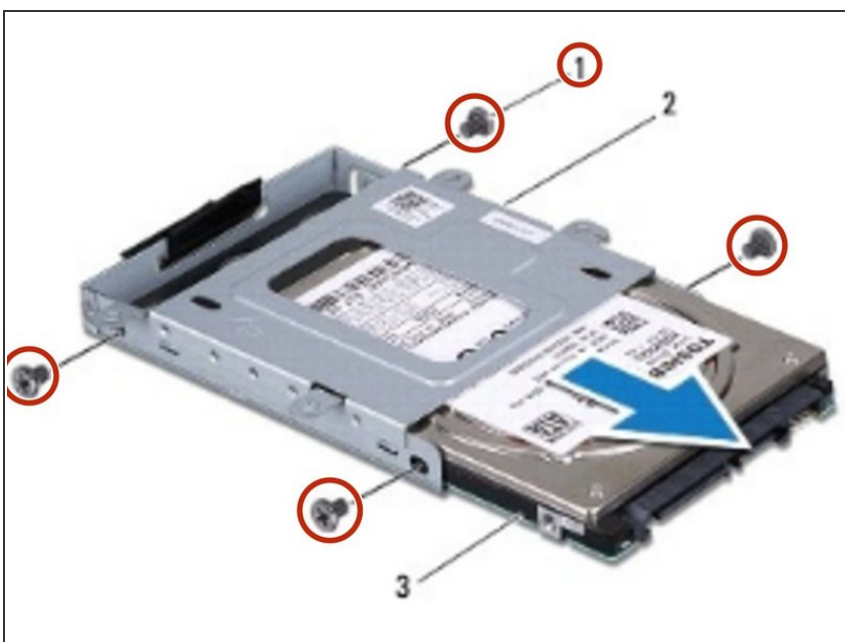
- Slide the hard drive assembly to disconnect it from the system board connector.

Step 3 — Pull the Black Pull-Tab



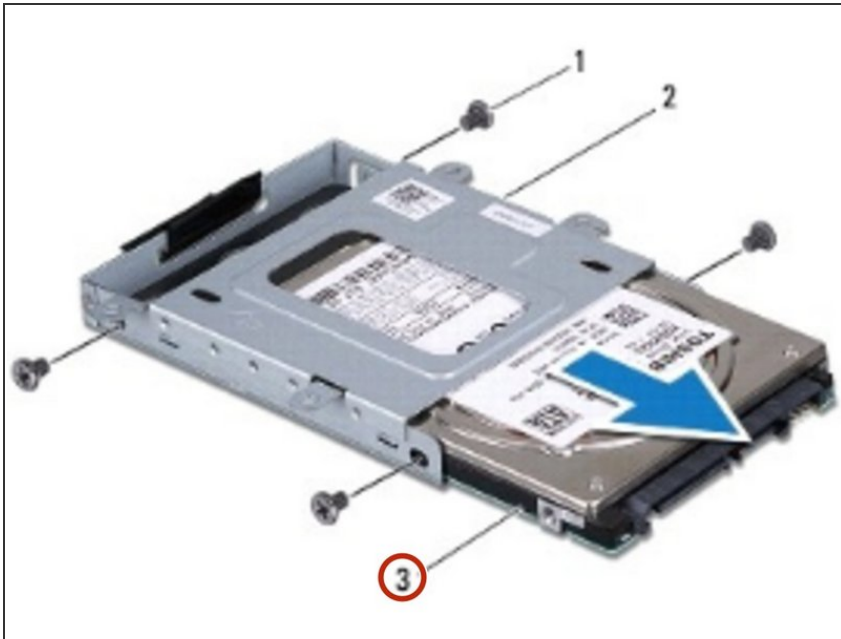
- Pull the black pull-tab and lift the hard drive assembly out of the computer base.

Step 4 — Remove the Screws



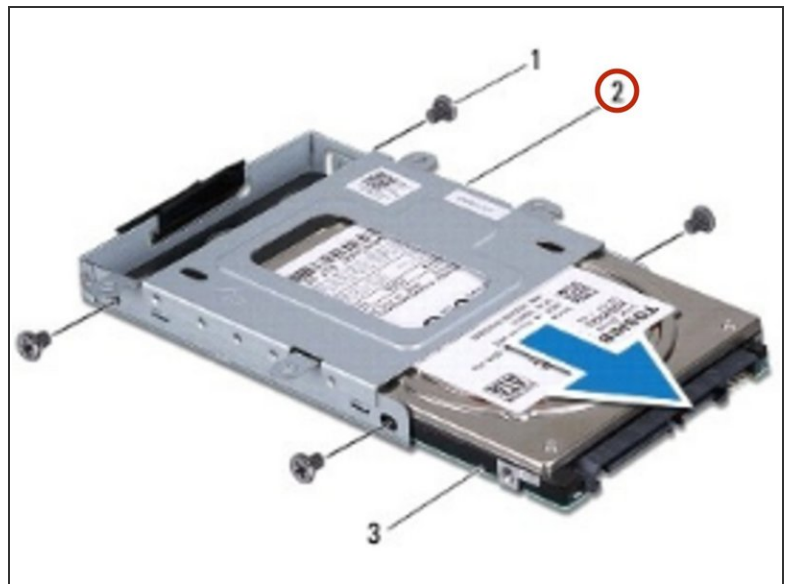
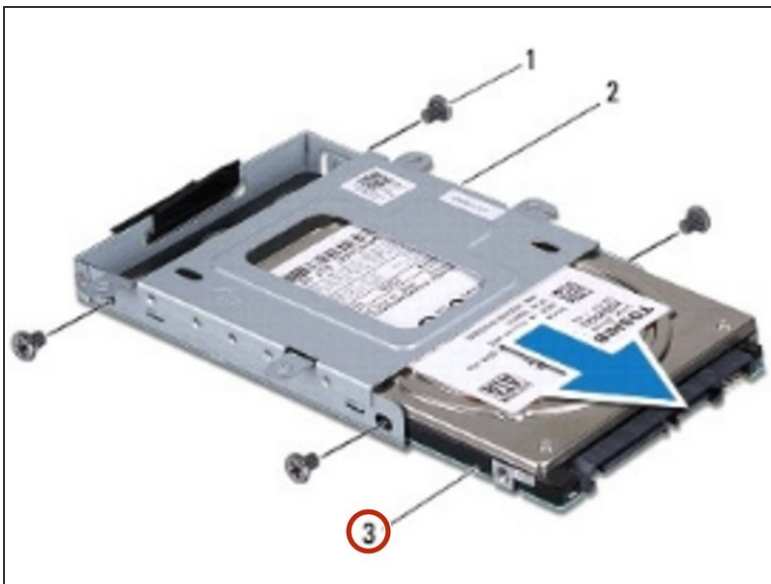
- Remove the four screws that secure the hard drive to the hard drive cage.

Step 5 — Sliding the Hard Drive



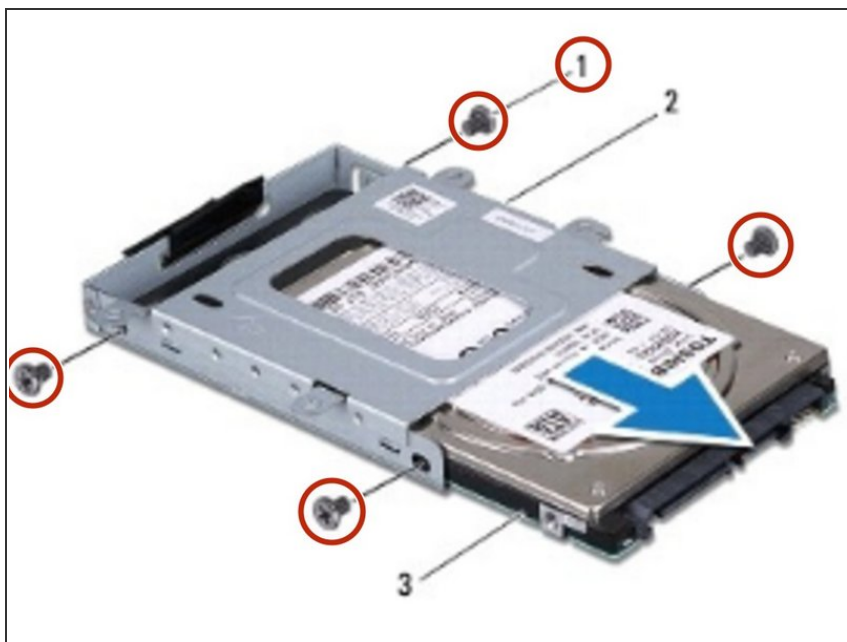
- Slide the hard drive out of the hard drive cage.

Step 6 — Sliding the Hard Drive



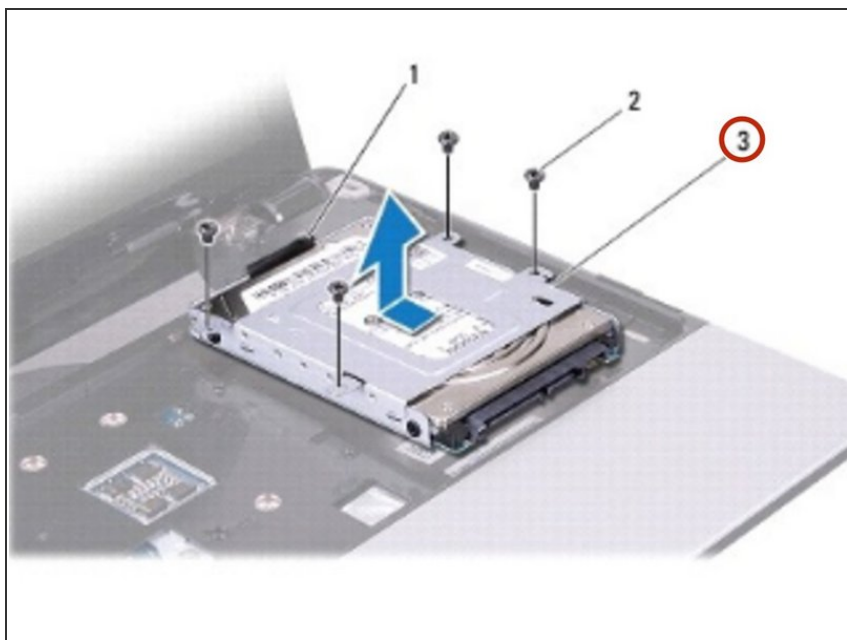
- Slide the **NEW** hard drive into the hard drive cage.

Step 7 — Replace the Screws



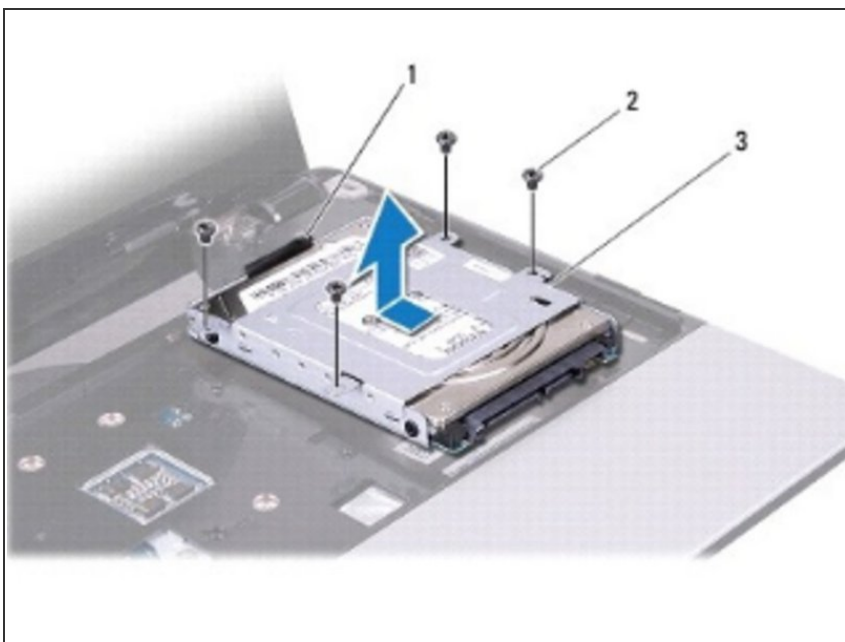
- Replace the four screws that secure the hard drive to the hard drive cage.

Step 8 — Placing the Hard Drive Assembly



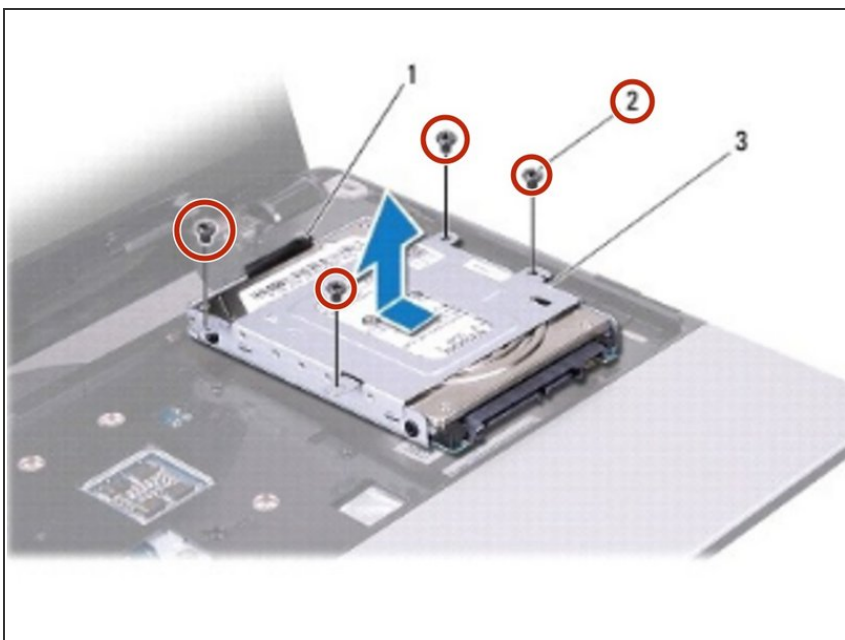
- Place the hard drive assembly in the computer base.

Step 9 — Connecting the Hard Drive Assembly



- Slide and connect the hard drive assembly to the system board connector.

Step 10 — Replace the Screws



- Replace the four screws that secure the hard drive assembly to the computer base.