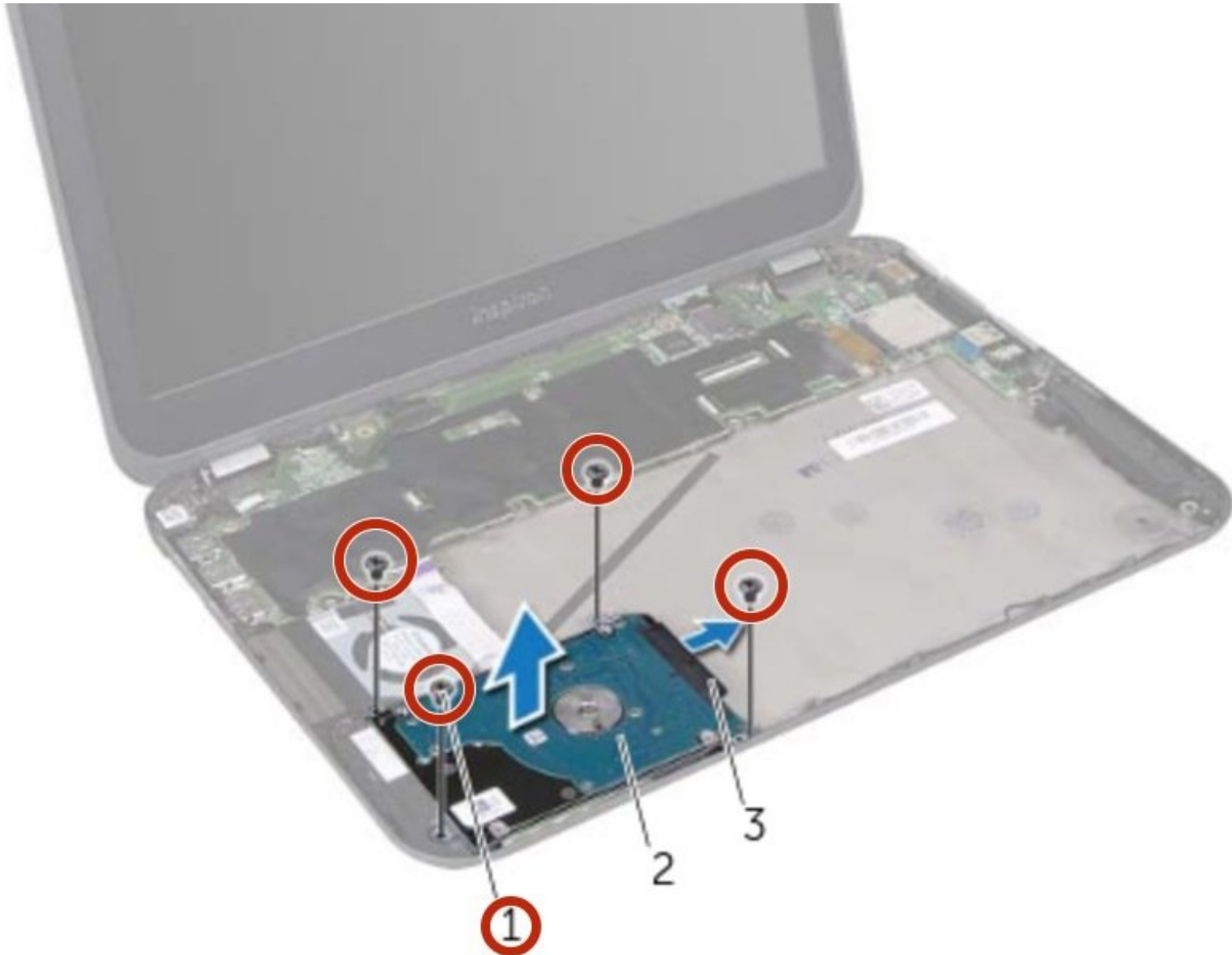




Dell Inspiron 13z 5323 Hard Drive Replacement

Written By: Terrence15



INTRODUCTION

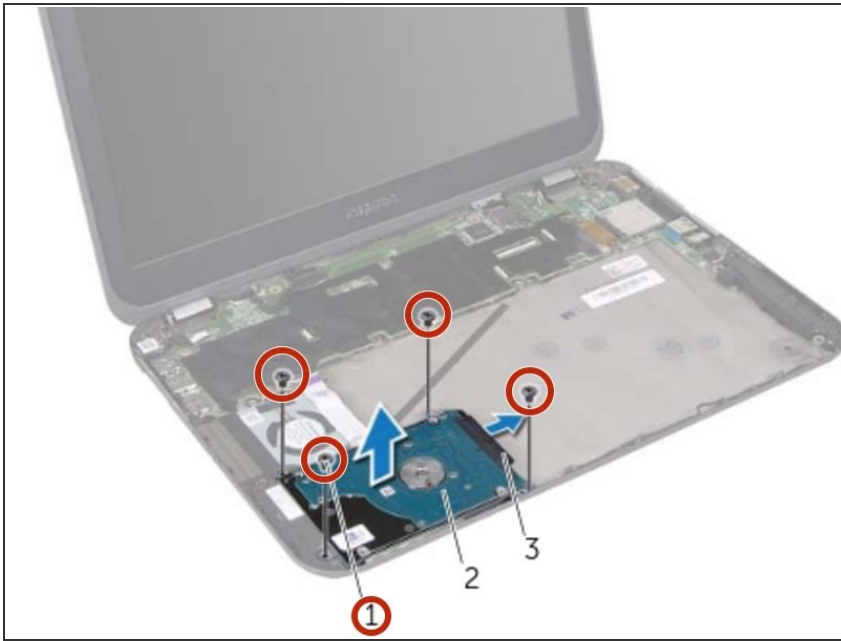
In this guide, we will show you how to remove and replace the Hard Drive.



TOOLS:

- [Essential Electronics Toolkit](#) (1)
-

Step 1 — Remove the Screws

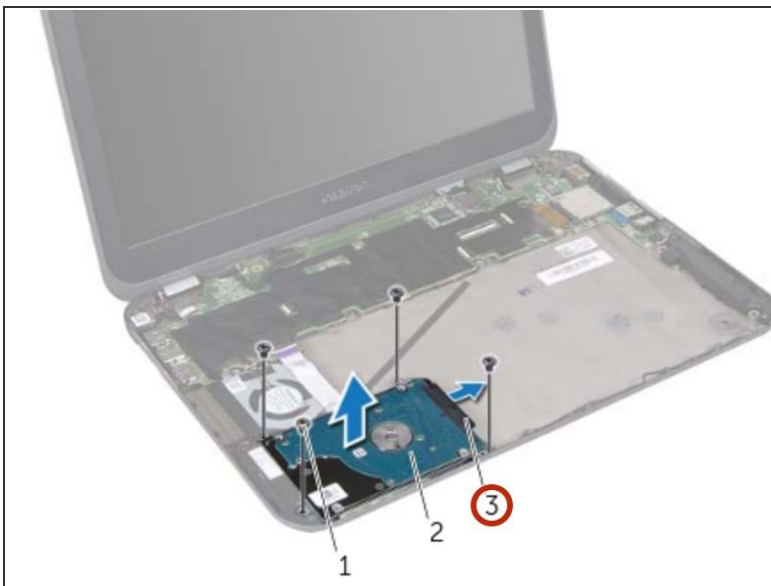


⚠ WARNING: Before working inside your computer, read the safety information that shipped with your computer and follow the steps in ["Before You Begin"](#).

⚠ CAUTION: Hard drives are extremely fragile. Exercise care when handling the hard drive.

- Remove the screws that secure the hard-drive assembly to the computer base.

Step 2 — Disconnecting the Hard-Drive Cable



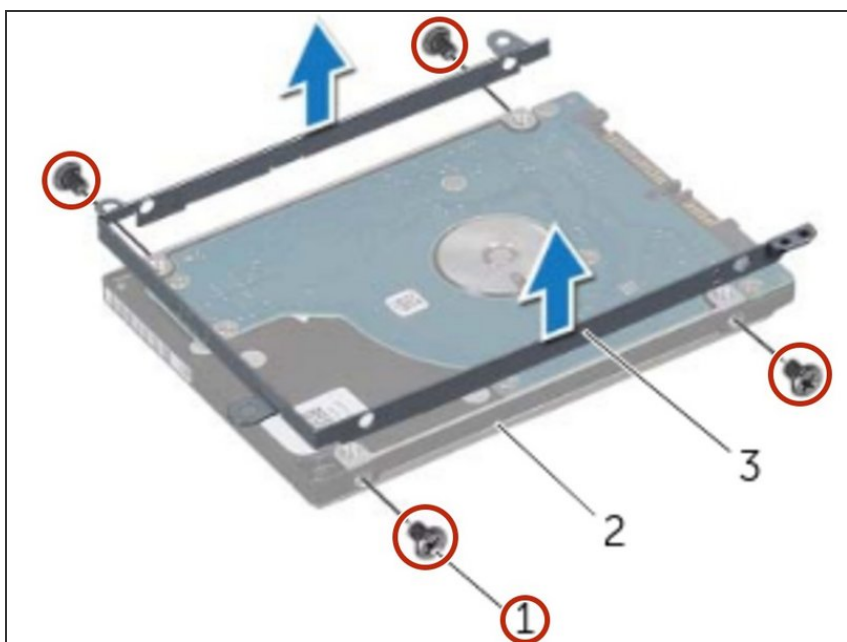
- Disconnect the hard-drive cable connector from the hard-drive assembly.

Step 3 — Lifting the Hard-Drive Assembly



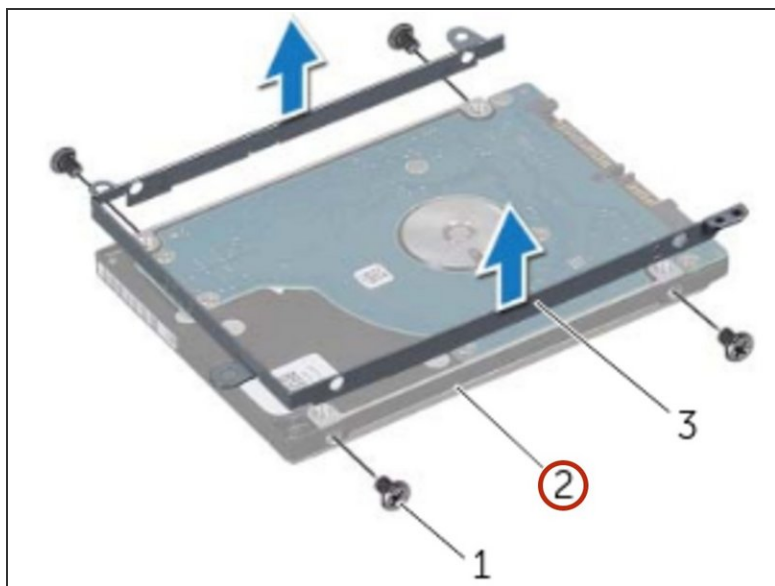
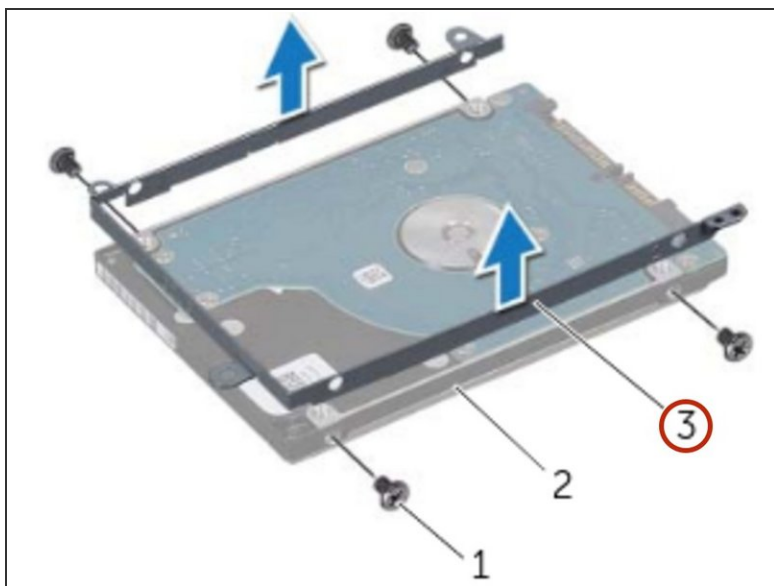
- Lift the hard-drive assembly away from the computer base.

Step 4 — Remove the Screws



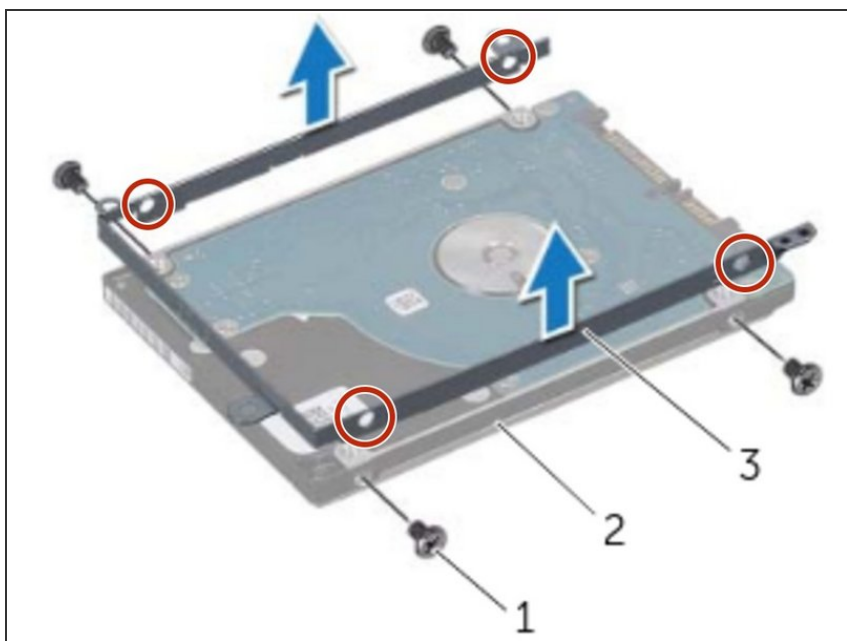
- Remove the screws that secure the hard-drive bracket to the hard drive.

Step 5 — Lifting the Hard-Drive Bracket



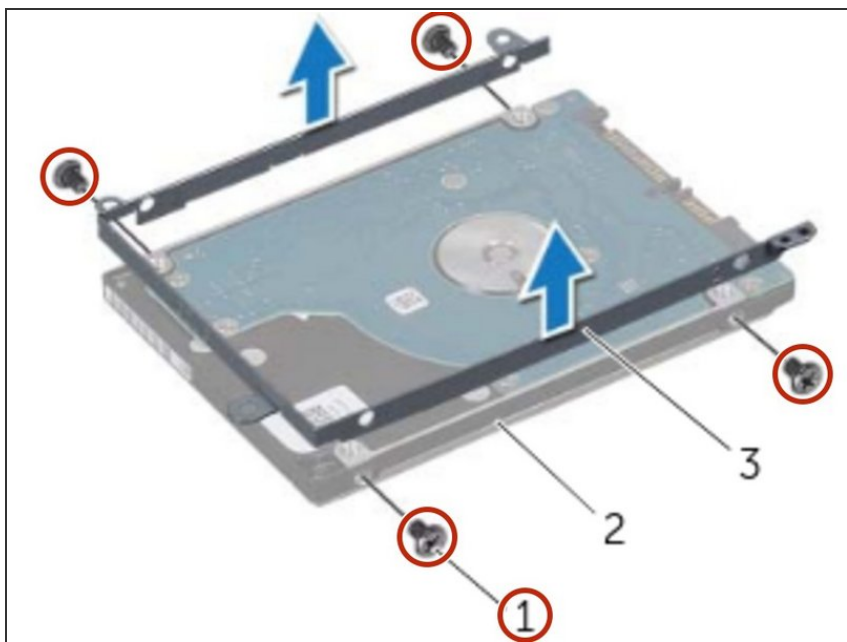
- Lift the hard-drive bracket off the hard drive.

Step 6 — Align the Screw Holes



- Align the screw holes on the hard drive-bracket with the screw holes on the **NEW** hard drive.

Step 7 — Replace the Screws



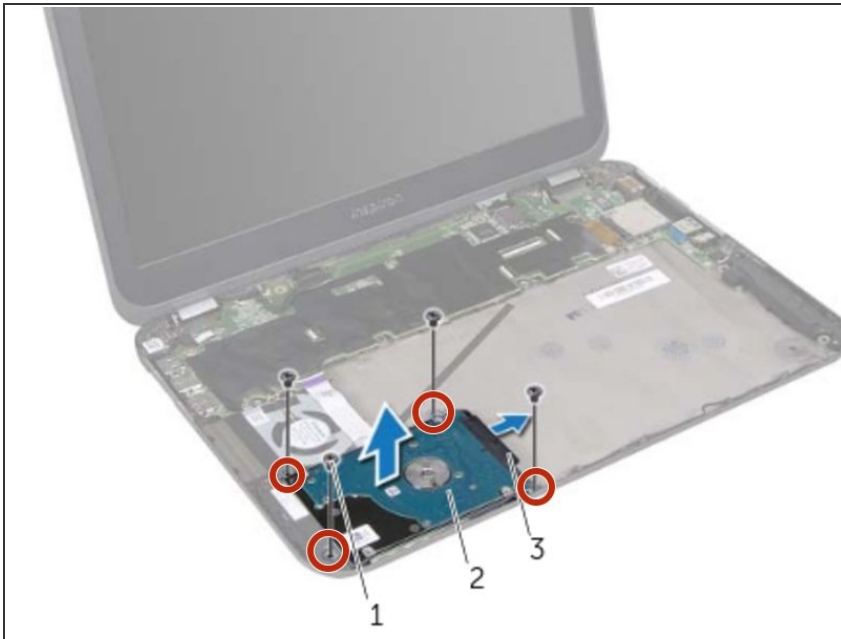
- Replace the screws that secure the hard-drive bracket to the hard drive.

Step 8 — Connecting the Hard-Drive Cable



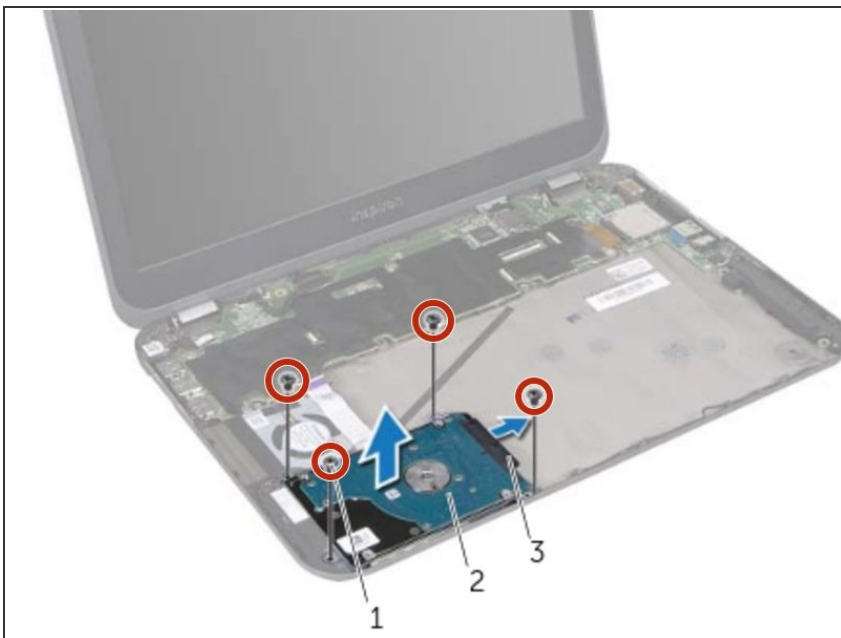
- Connect the hard-drive cable connector to the hard-drive assembly.

Step 9 — Align the Screw Holes



- Align the screw holes on the hard-drive assembly with the screw holes on the computer base.

Step 10 — Replace the Screws



- Replace the screws that secure the hard-drive assembly to the computer base.

To reassemble your device, follow these instructions in reverse order.