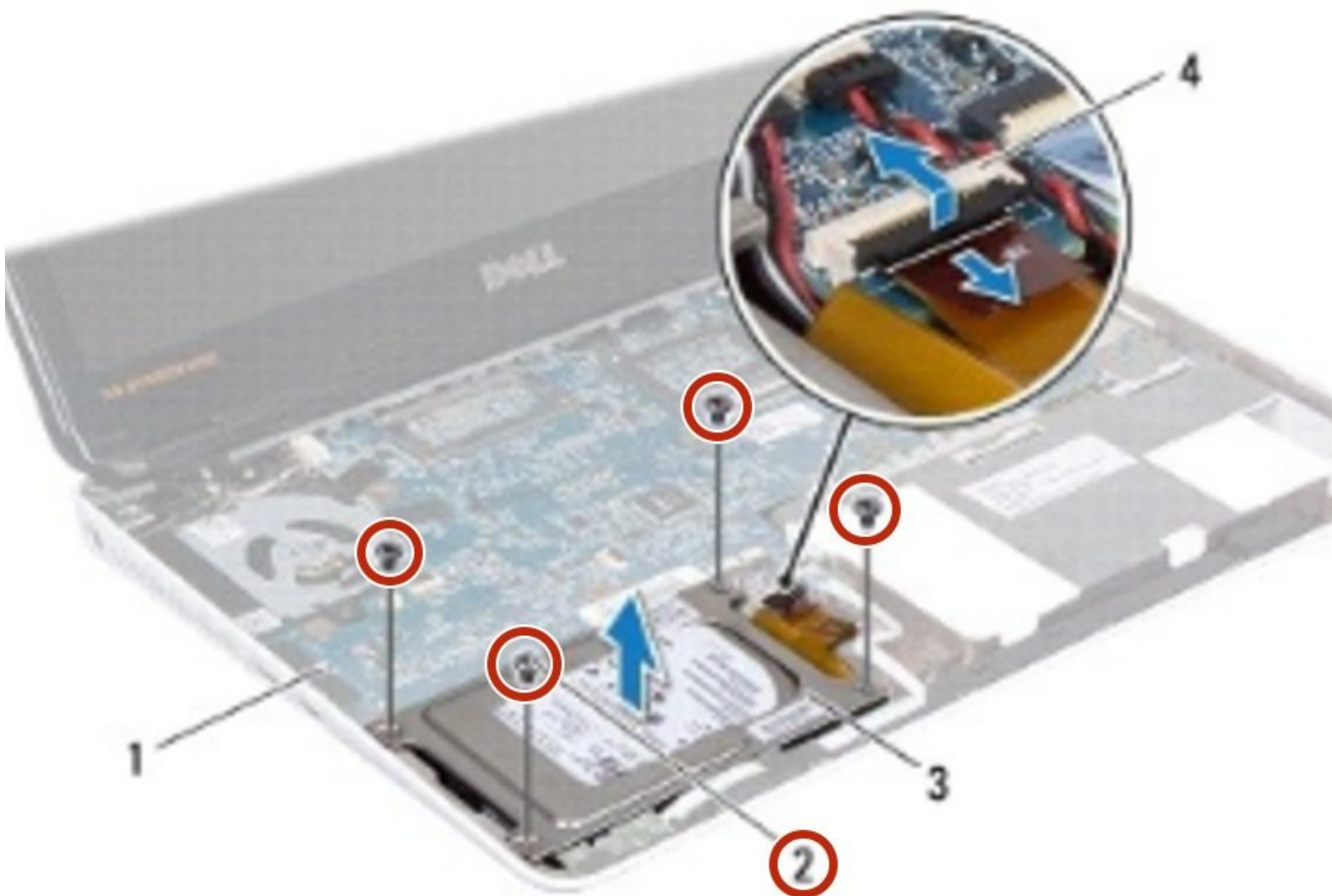




# Dell Inspiron 13z N301z Hard-Drive Assembly Replacement

Written By: Terrence15



---

## INTRODUCTION

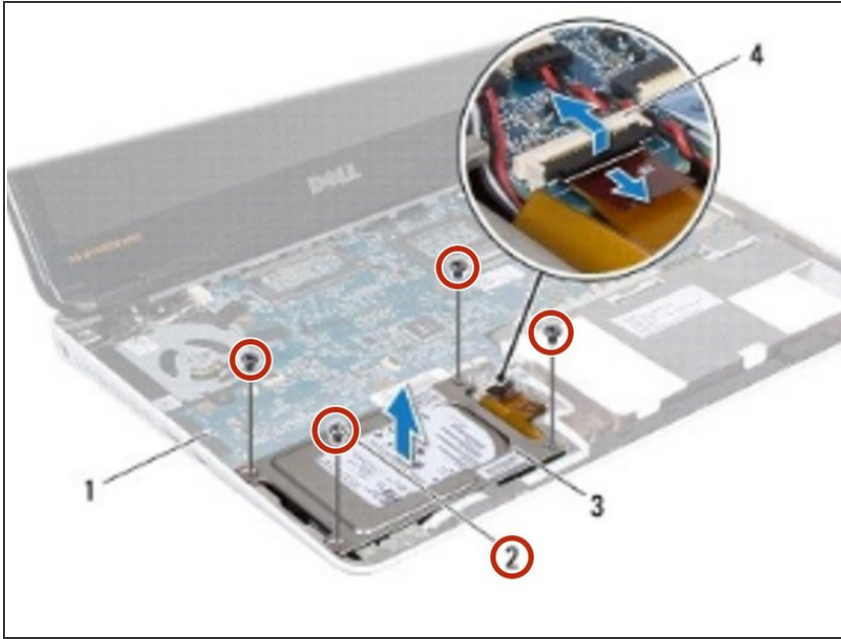
In this guide, we will be showing you how to remove and replace the Hard-Drive Assembly.



### TOOLS:

- [Phillips #0 Screwdriver](#) (1)
-

## Step 1 — Removing the Screws

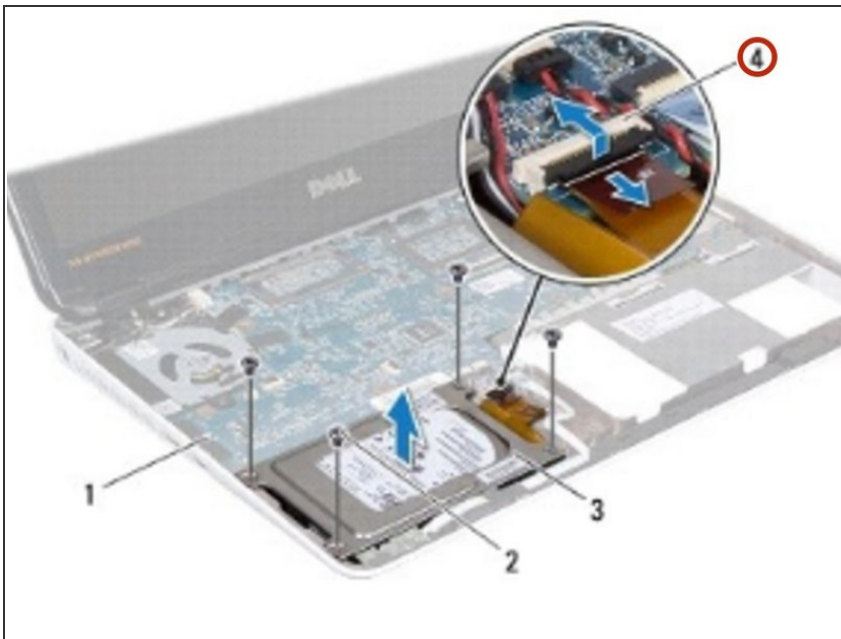


**⚠ WARNING:** Before working inside your computer, read the safety information that shipped with your computer. Follow the instructions in [Before You Begin](#).

**⚠ CAUTION:** To avoid electrostatic discharge, ground yourself by using a wrist grounding strap or by periodically touching an unpainted metal surface (such as a connector on your computer).

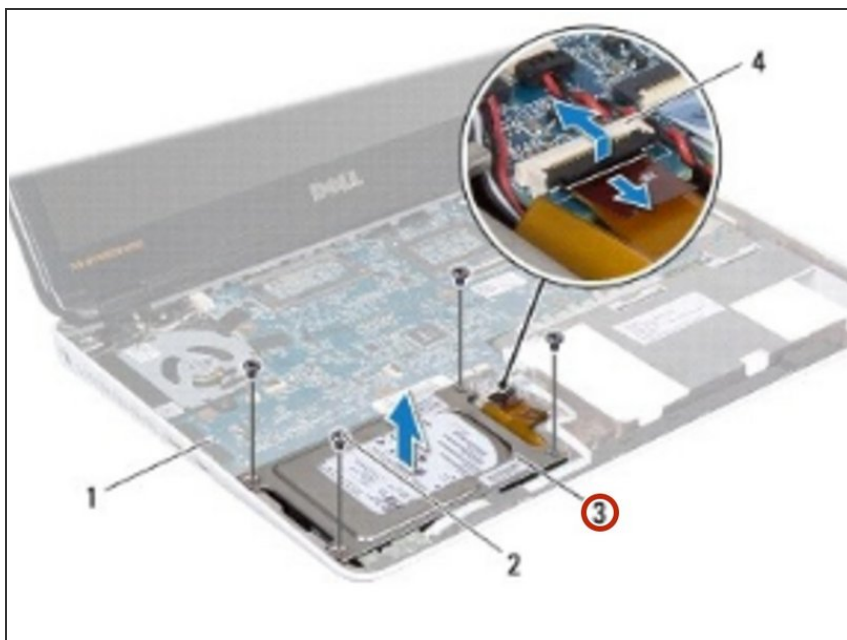
- Remove the four screws that secure the hard-drive assembly to the computer base.

## Step 2 — Lifting the Connector Latch



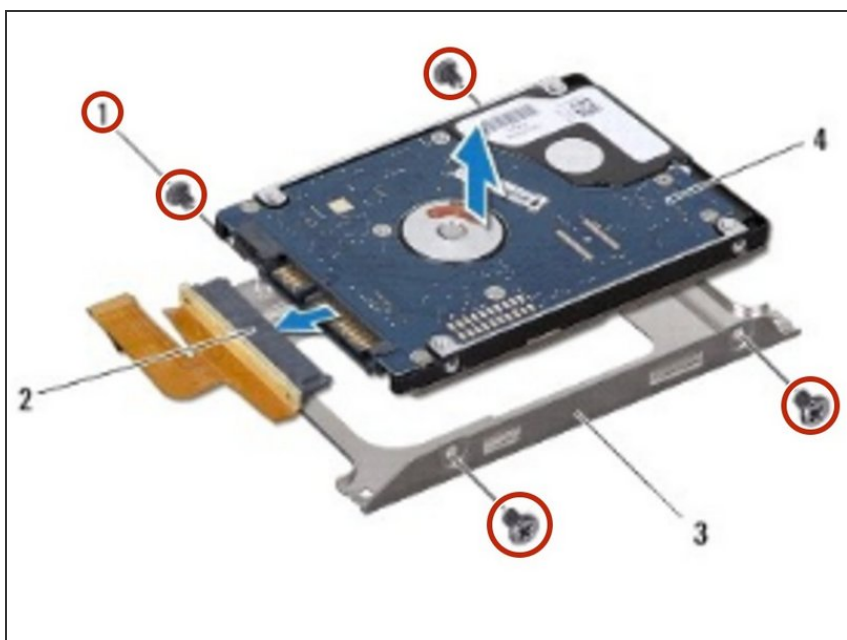
- Lift the connector latch and pull the pull-tab to disconnect the hard-drive cable from the connector on the system board.

### Step 3 — Lifting the Hard-Drive Assembly



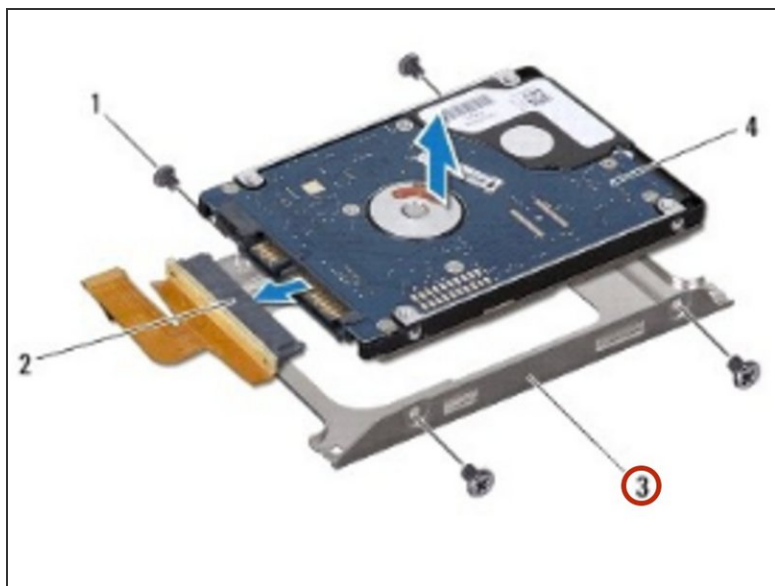
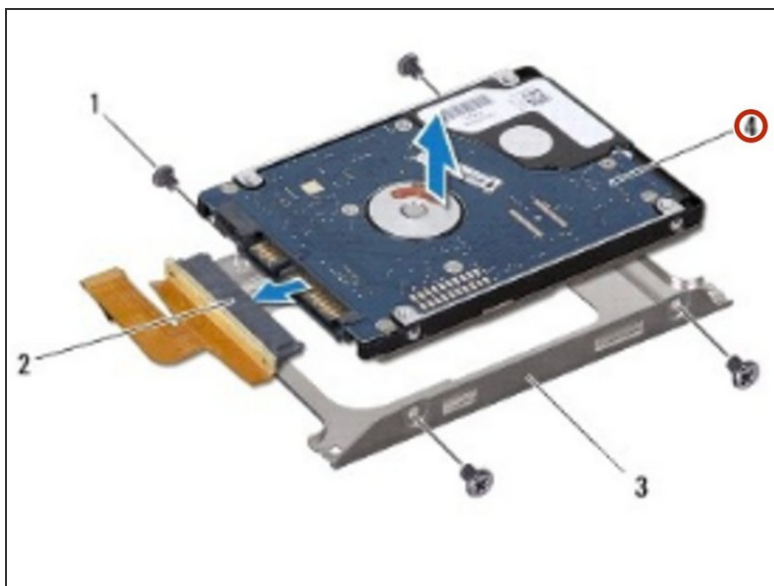
- Lift the hard-drive assembly out of the computer base.

### Step 4 — Remove the Screws



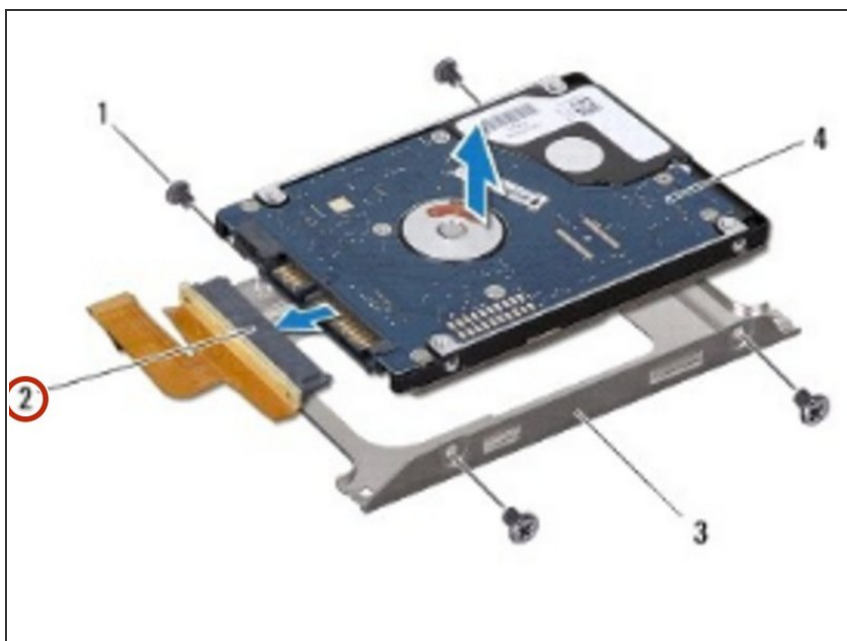
- Remove the four screws that secure the hard-drive bracket to the hard drive.

## Step 5 — Lifting the Hard Drive



- Lift the hard drive out of the hard-drive bracket.

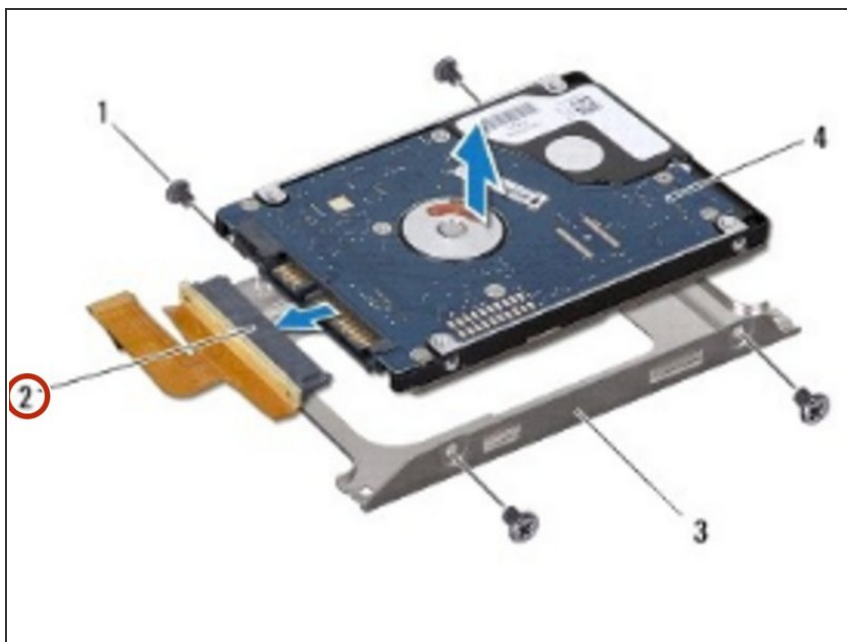
## Step 6 — Disconnecting the Interposer



- Pull the interposer to disconnect it from the hard drive.

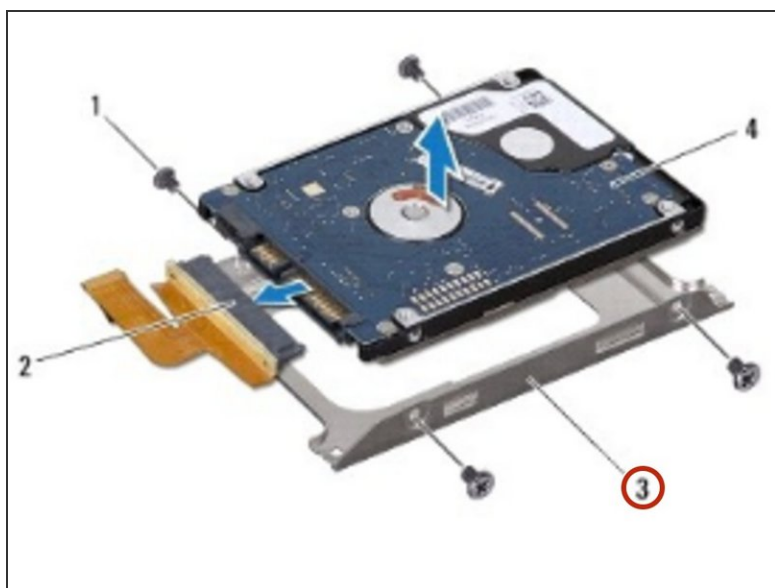
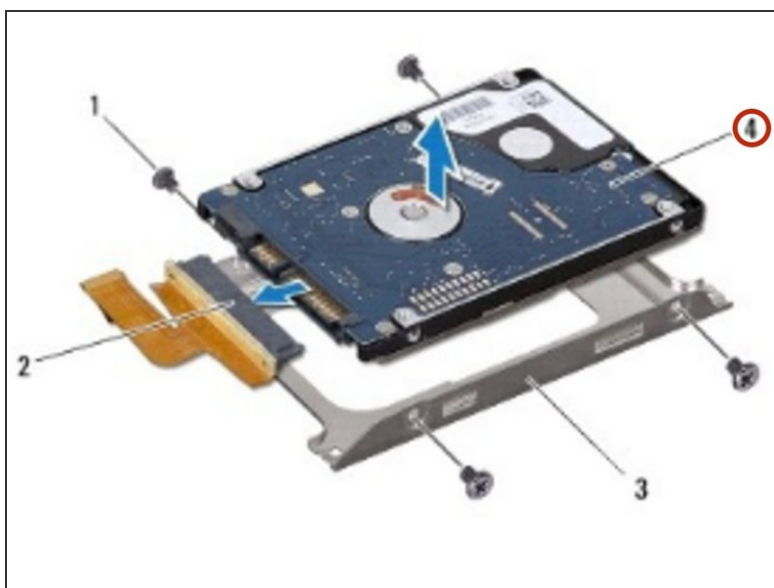


## Step 7 — Connecting the Interposer



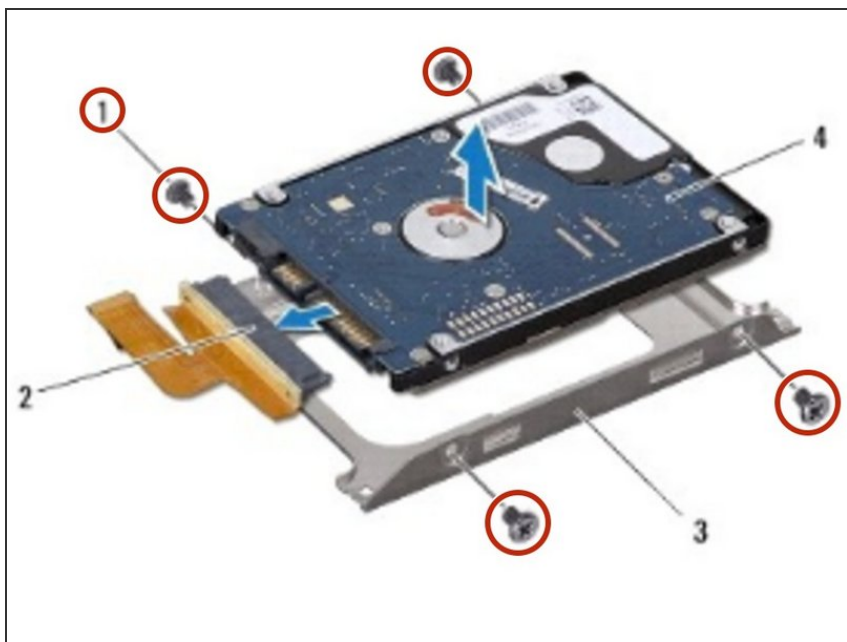
- Connect the interposer to the **NEW** hard drive.

## Step 8 — Placing the Hard-Drive



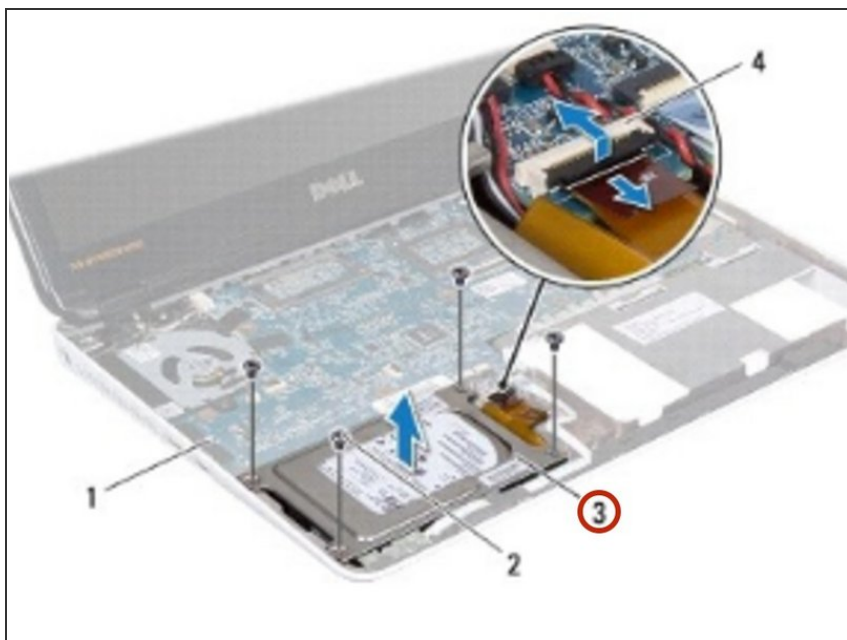
- Place the hard drive in the hard-drive bracket.

## Step 9 — Replace the Screws



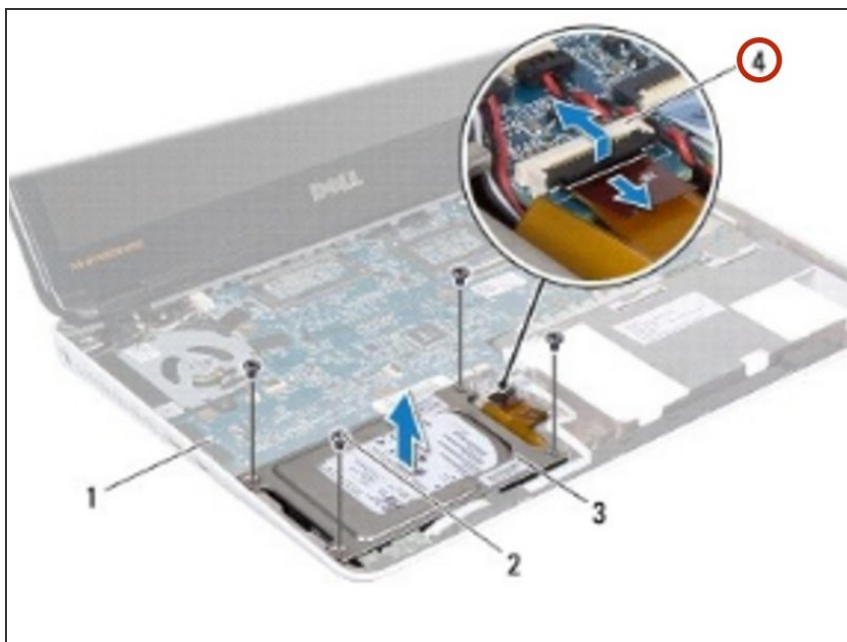
- Replace the four screws the hard-drive bracket to the hard drive.

## Step 10 — Placing the Hard-Drive Assembly



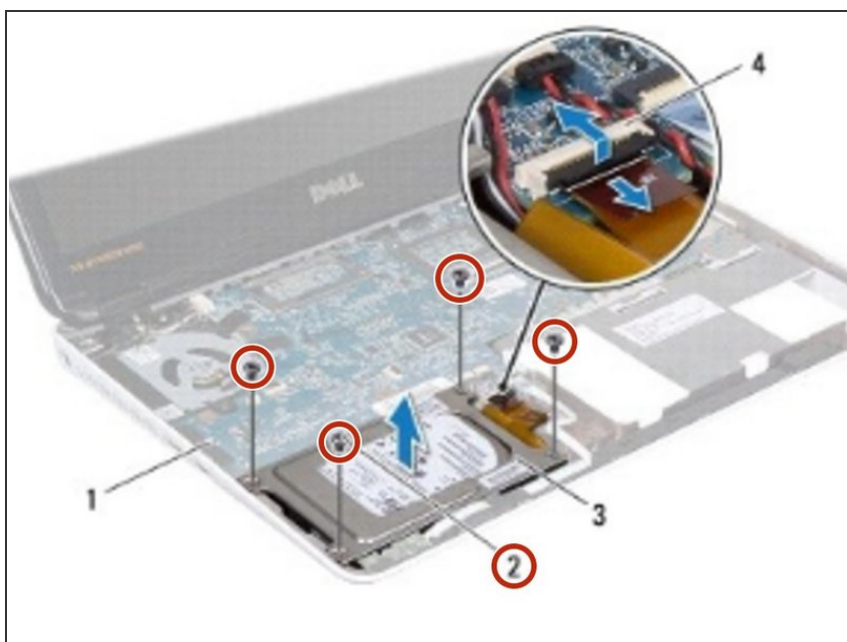
- Place the hard-drive assembly in the computer base.

## Step 11 — Sliding the Hard-Drive Cable



- Slide the hard-drive cable into the connector on the system board and press down on the latch to secure the hard-drive cable.

## Step 12 — Replace the Screws



- Replace the four screws that secure the hard-drive assembly to the computer base.