



Dell Inspiron 13z N311z Hard-Drive Assembly Replacement

Written By: Terrence15



INTRODUCTION

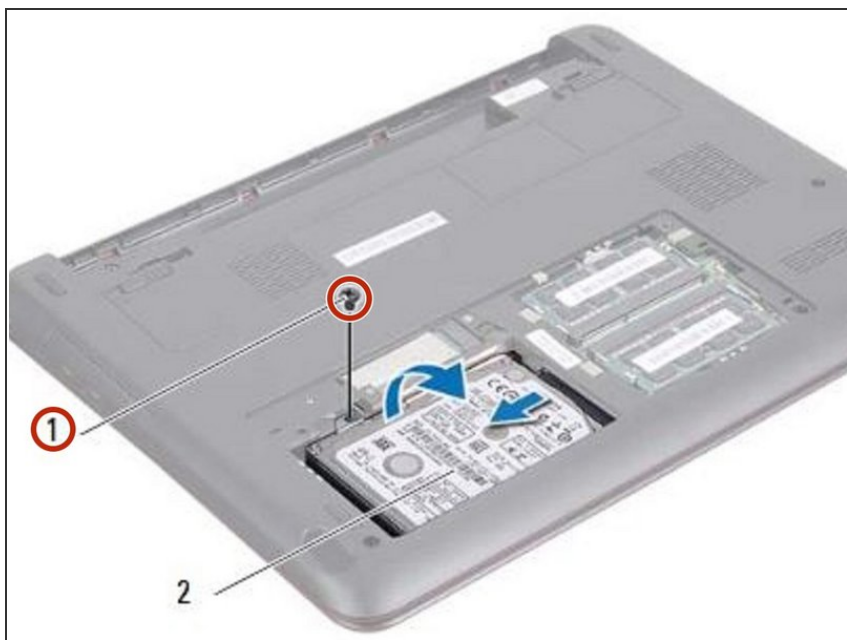
In this guide, we will show you how to remove and replace the Hard-Drive Assembly.



TOOLS:

- [Essential Electronics Toolkit](#) (1)
-

Step 1 — Remove the Screw

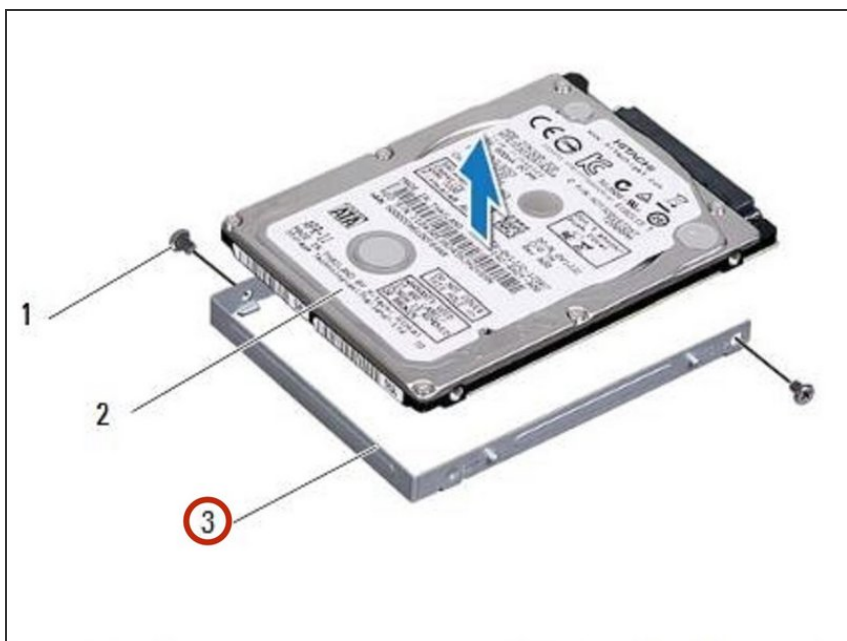


⚠ WARNING: Before working inside your computer, read the safety information that shipped with your computer. Follow the instructions in ["Before You Begin"](#).

⚠ CAUTION: To avoid electrostatic discharge, ground yourself by using a wrist grounding strap or by periodically touching an unpainted metal surface (such as a connector on your computer).

- Remove the screw that secures the hard-drive assembly to the computer base.

Step 2 — Sliding the Hard-Drive Bracket



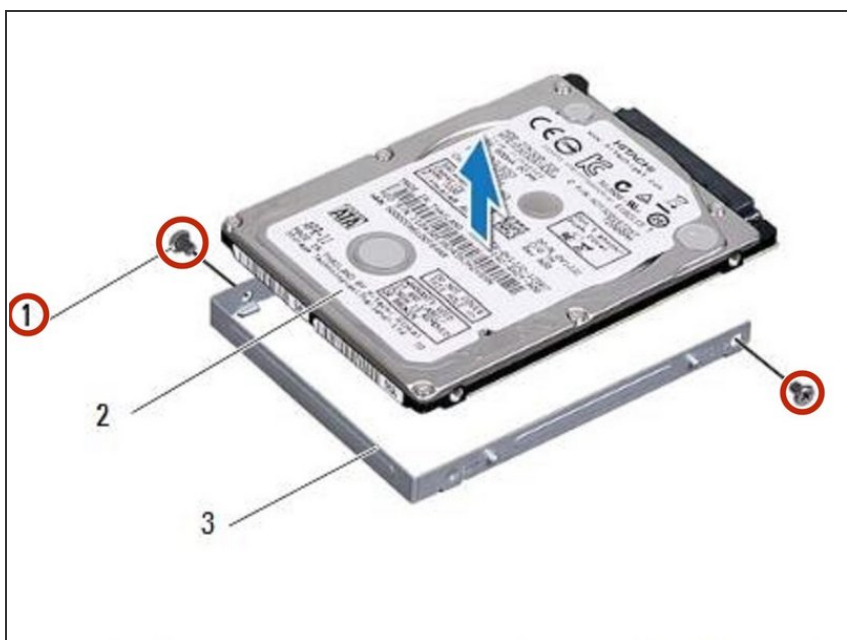
- To avoid damage to the hard drive, gently slide the hard-drive bracket away from the hard-drive slot.

Step 3 — Lift the Hard-Drive Assembly



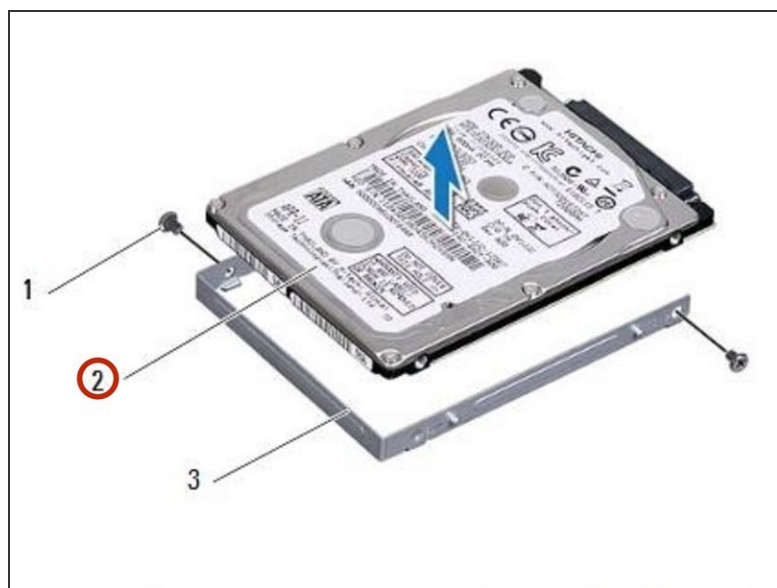
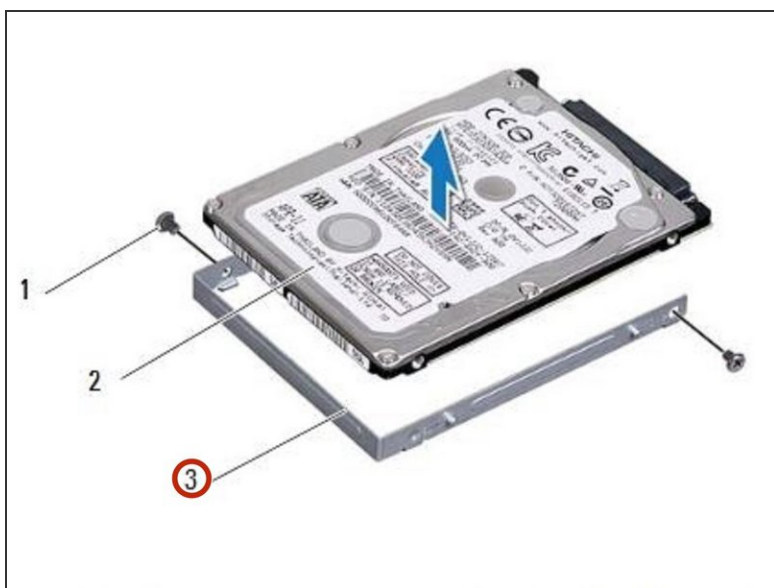
- Lift the hard-drive assembly off the computer base.

Step 4 — Removing the Screws



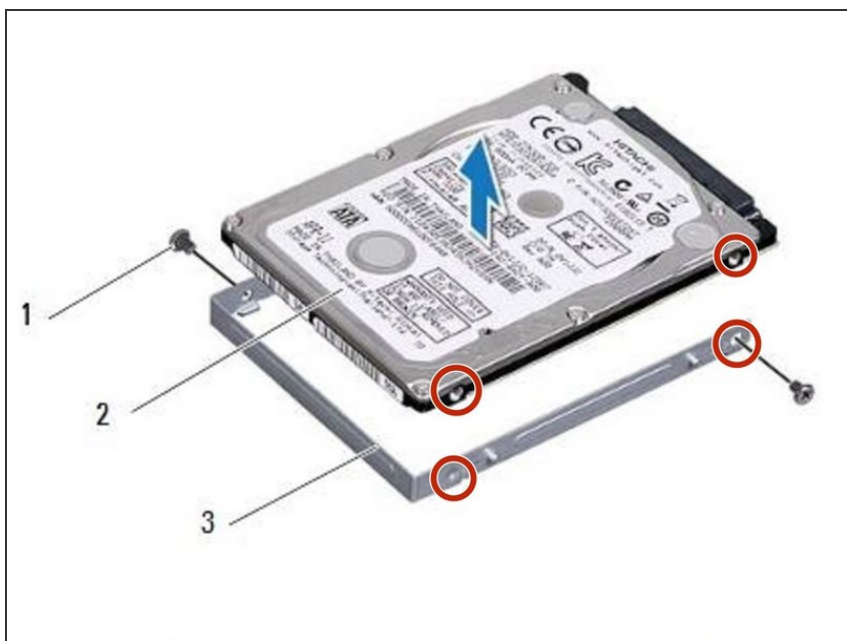
- Remove the two screws that secure the hard-drive bracket to the hard drive.

Step 5 — Lifting the Hard Drive



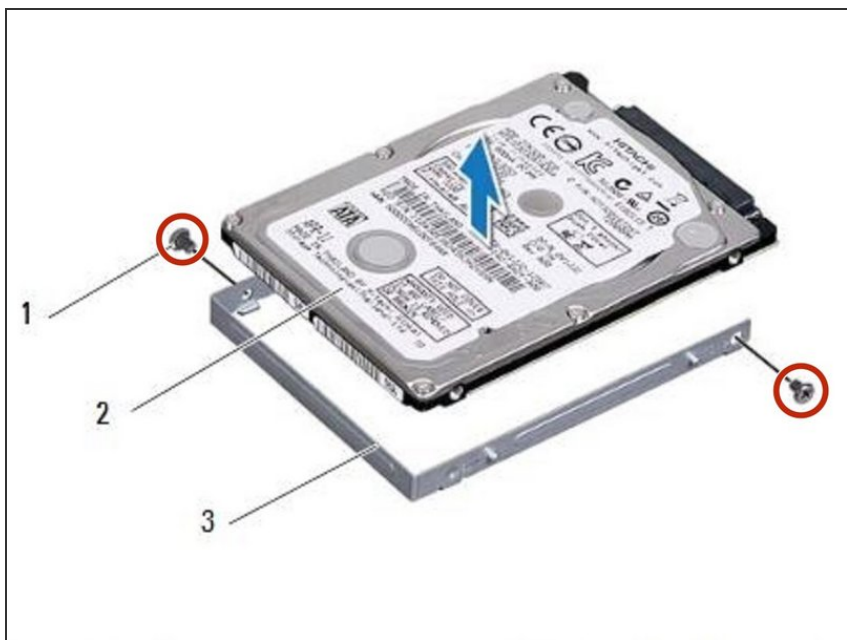
- Lift the hard drive out of the hard-drive bracket.

Step 6 — Align the Screw Holes



- Align the screw holes on the hard-drive bracket with the screw holes on the hard drive.

Step 7 — Replace the Screws



- Replace the two screws that secure the hard-drive bracket to the hard drive.

Step 8 — Placing the Hard Drive Assembly



- Place the **NEW** hard-drive assembly in the computer base.

Step 9 — Sliding the Hard-Drive Assembly



- Slide the hard-drive assembly into the connector on the system board.

Step 10 — Replace the Screw



- Replace the screw that secures the hard-drive assembly to the computer base.