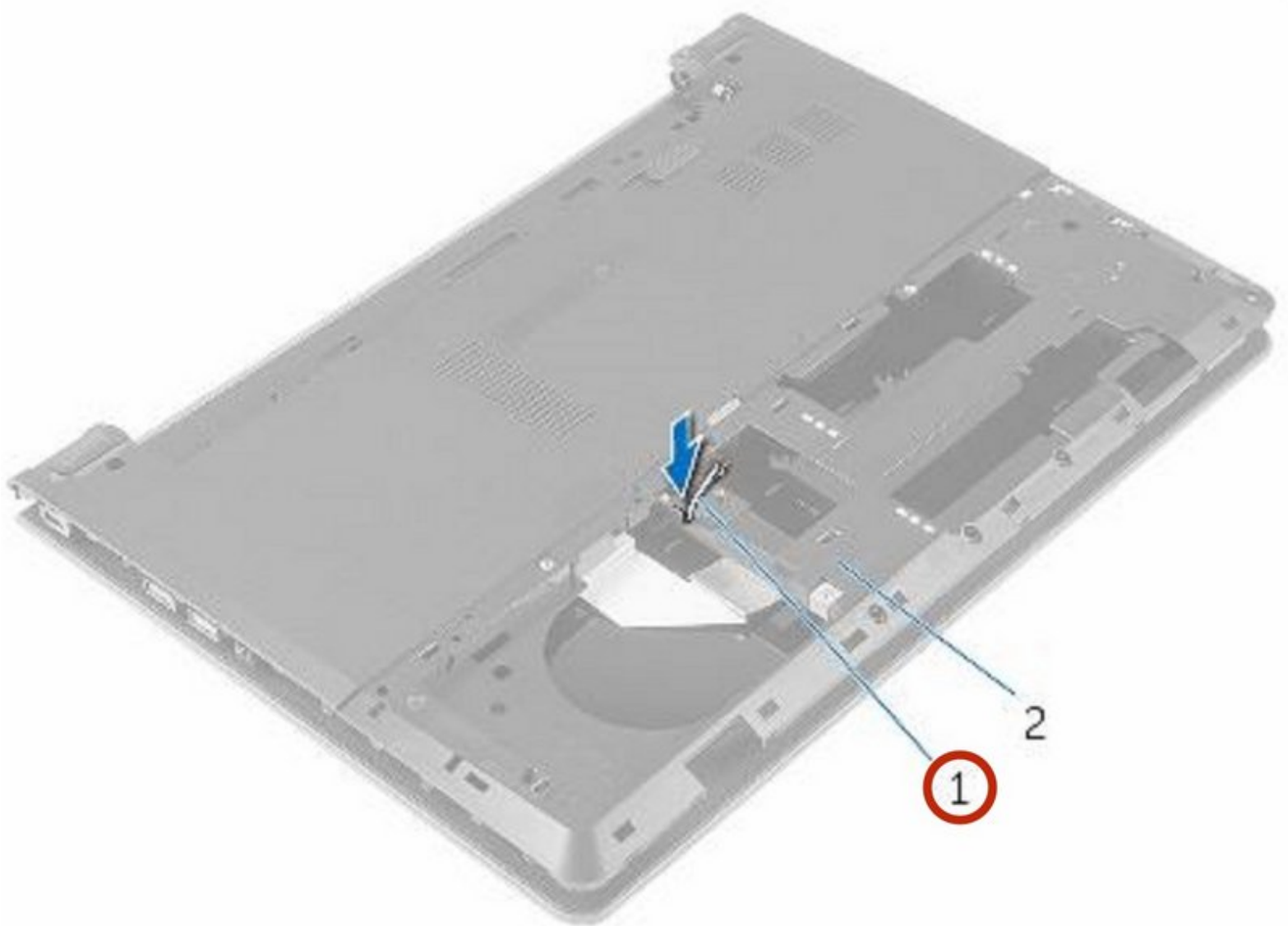




Dell Inspiron 14 3459 Display Assembly Replacement

Written By: Terrence15



INTRODUCTION

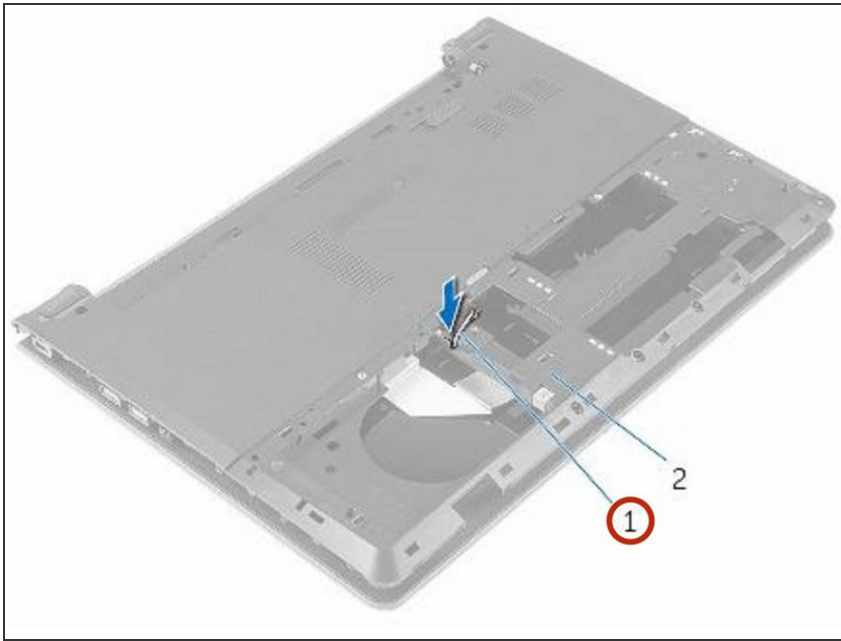
In this guide, we will be showing you how to remove and replace the Display Assembly.



TOOLS:

- [Phillips #0 Screwdriver](#) (1)
-

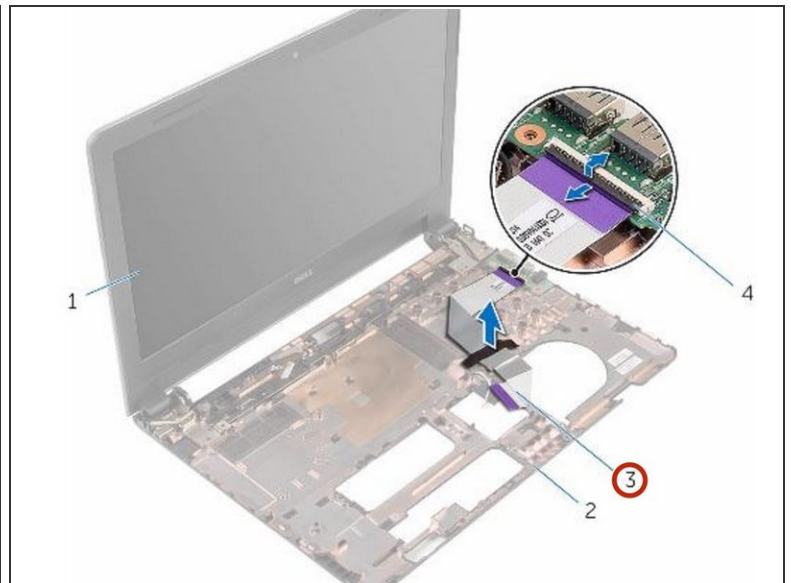
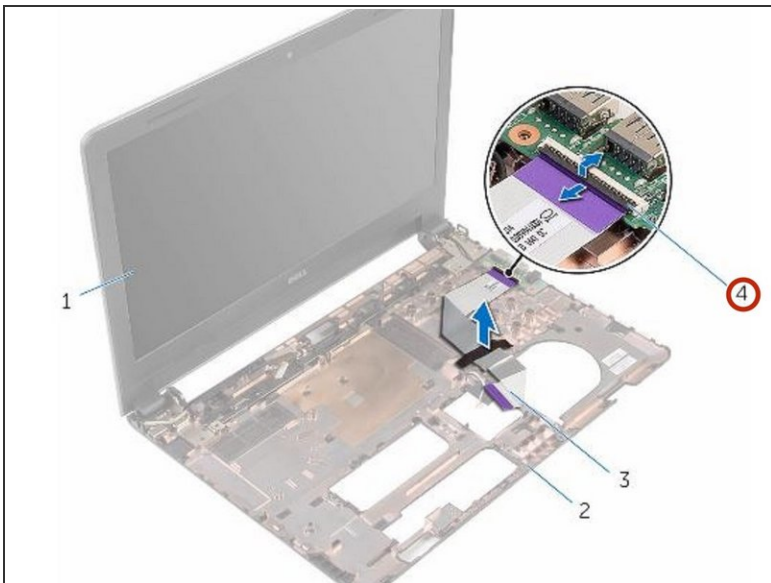
Step 1 — Sliding the Antenna Cables



⚠ WARNING: Before working inside your computer, read the safety information that shipped with your computer and follow the steps in [Before Working Inside Your Computer](#). After working inside your computer, follow the instructions in [After Working Inside Your Computer](#).

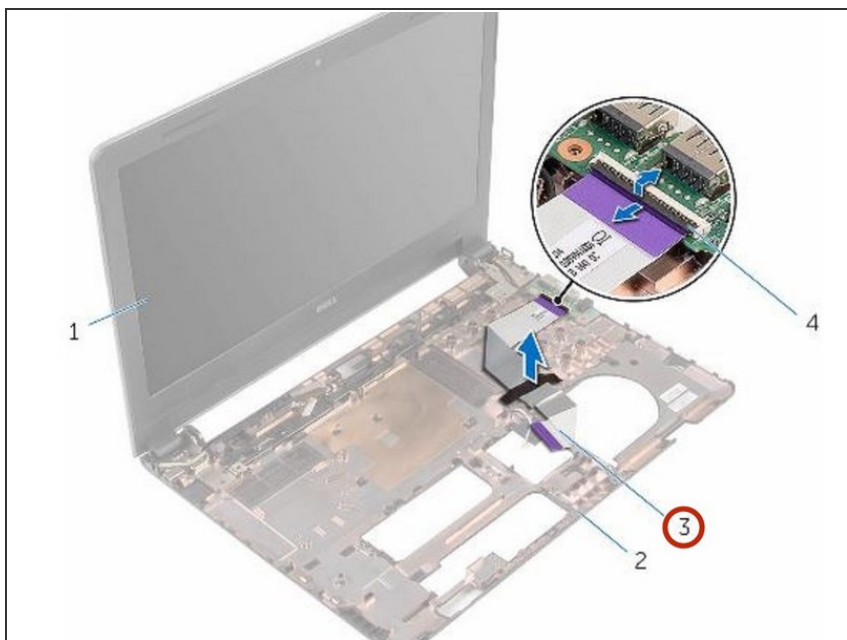
- Close the display and turn the computer over.
- Slide the antenna cables into the slot on the computer base.

Step 2 — Disconnecting the I/O Board Cable



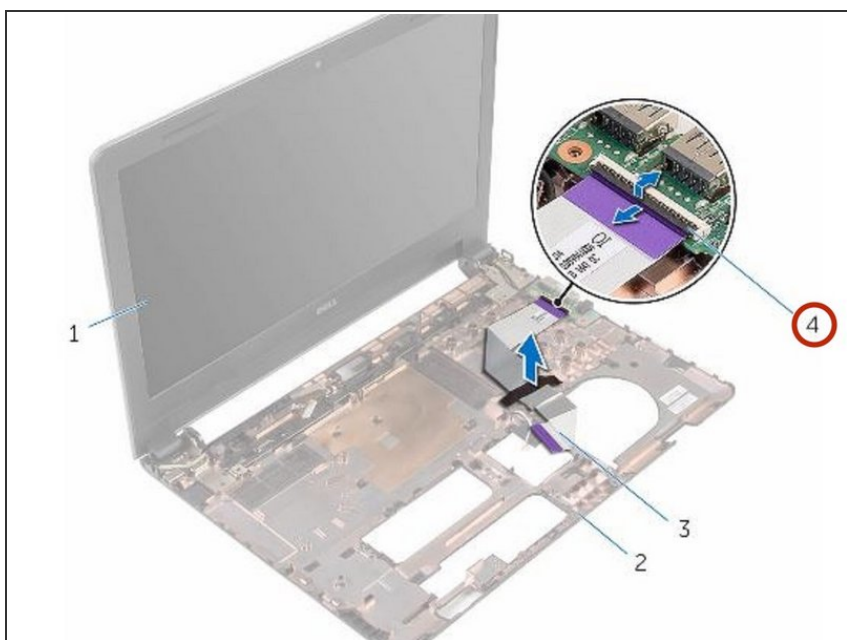
- Turn the computer over and open the display.
- Open the latch and disconnect the I/O-board cable from the I/O board.

Step 3 — Removing the Board Cable



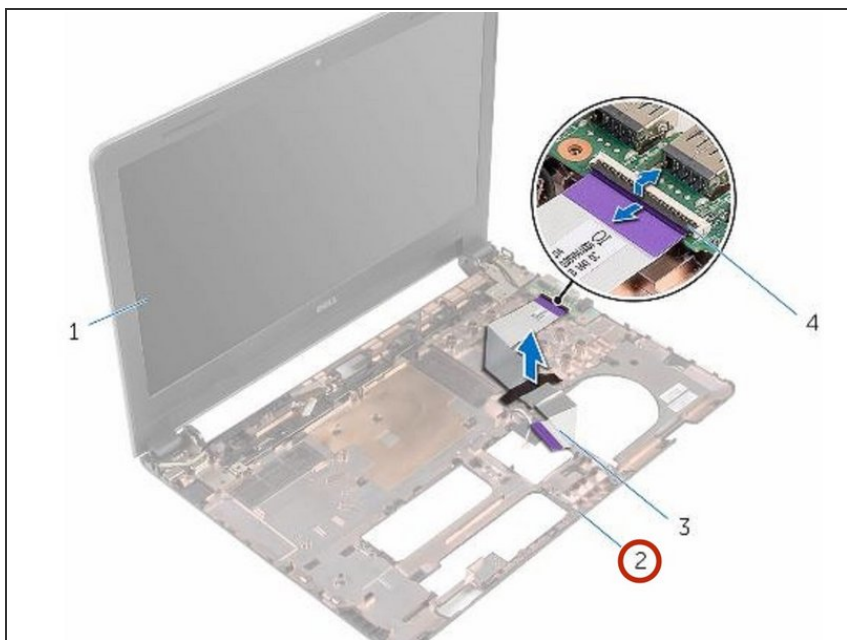
- Remove the I/O-board cable from the computer base.

Step 4 — Remove the Antenna Cables



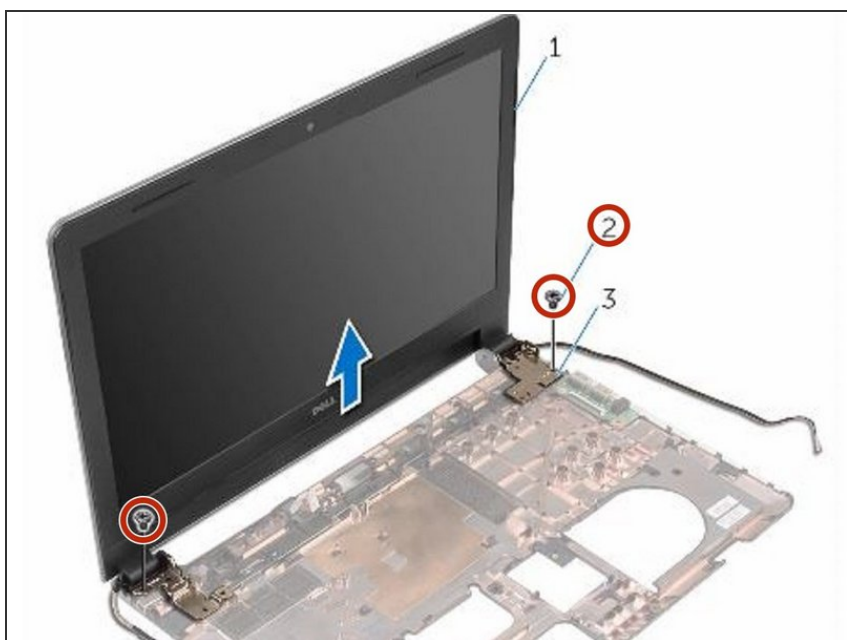
- Note the antenna cable routing and remove the antenna cables from the routing guides on the computer base.

Step 5 — Note the Routing



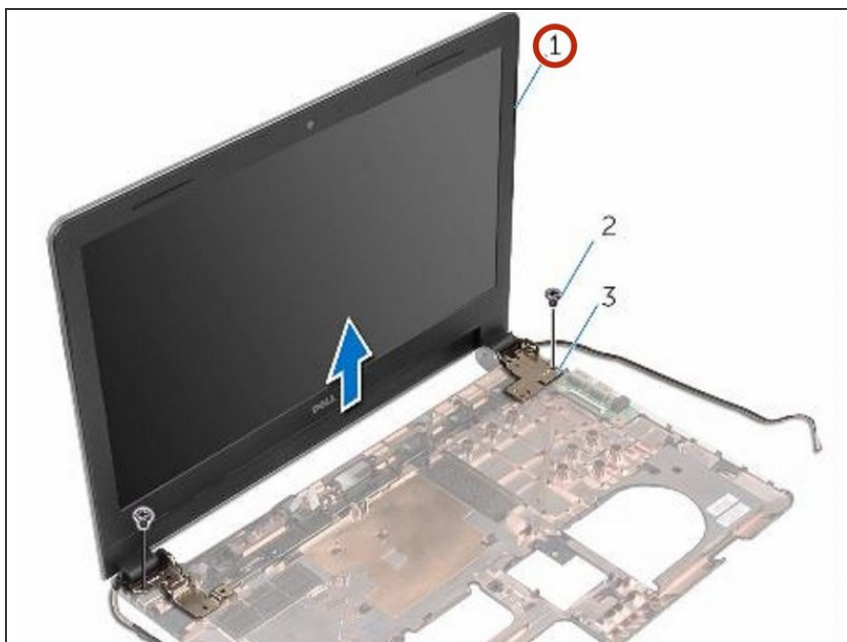
- Note the display cable routing and remove the cable from its routing guides on the computer base.

Step 6 — Remove the Screws



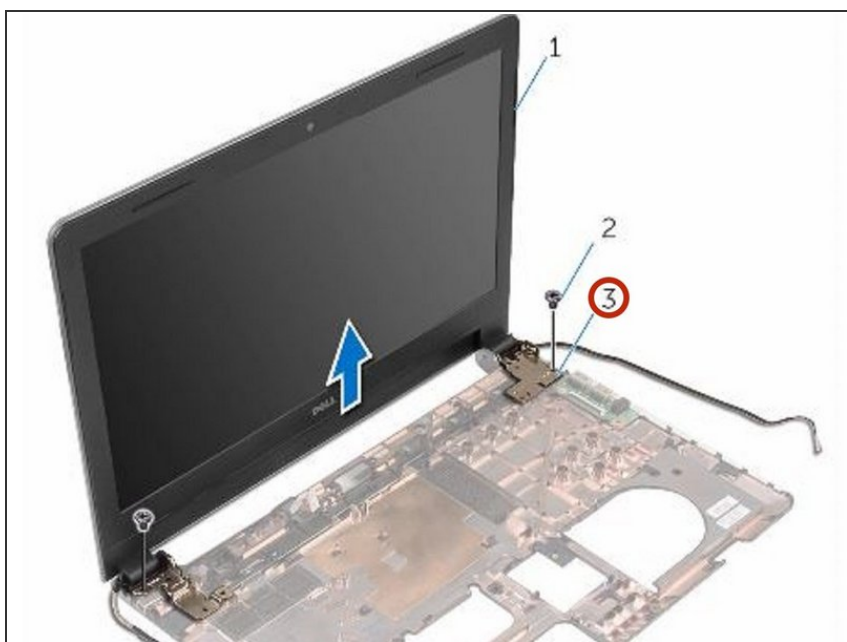
- Remove the screws that secure the display hinges to the computer base.

Step 7 — Lift the Display Assembly



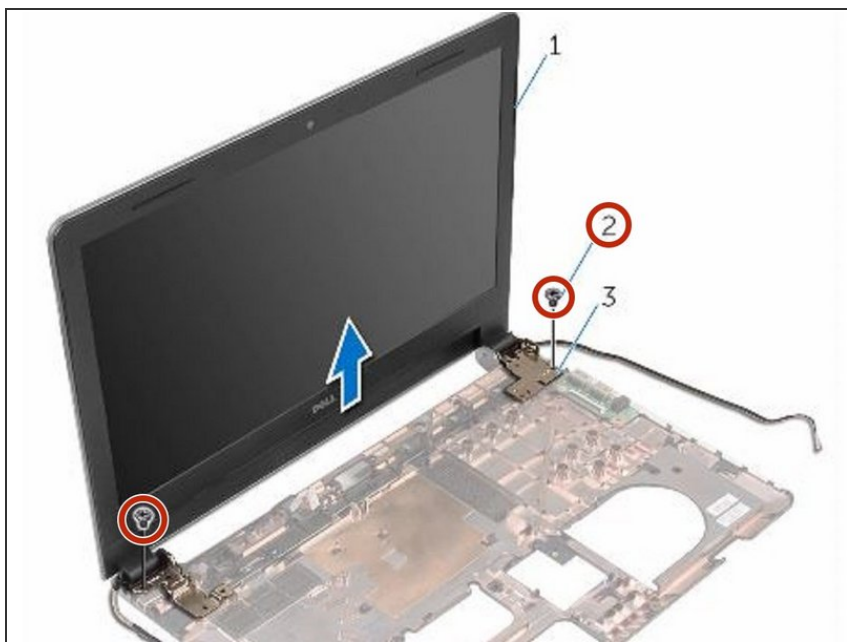
- Lift the display assembly off the computer base.

Step 8 — Align the Screw Holes



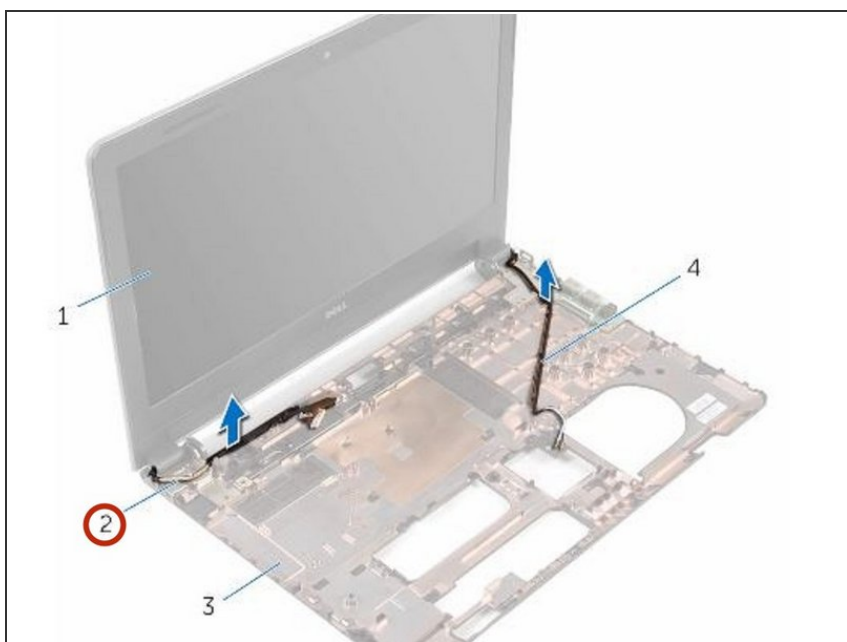
- Align the screw holes on the display hinges with the screw holes on the computer base.

Step 9 — Replace the Screws



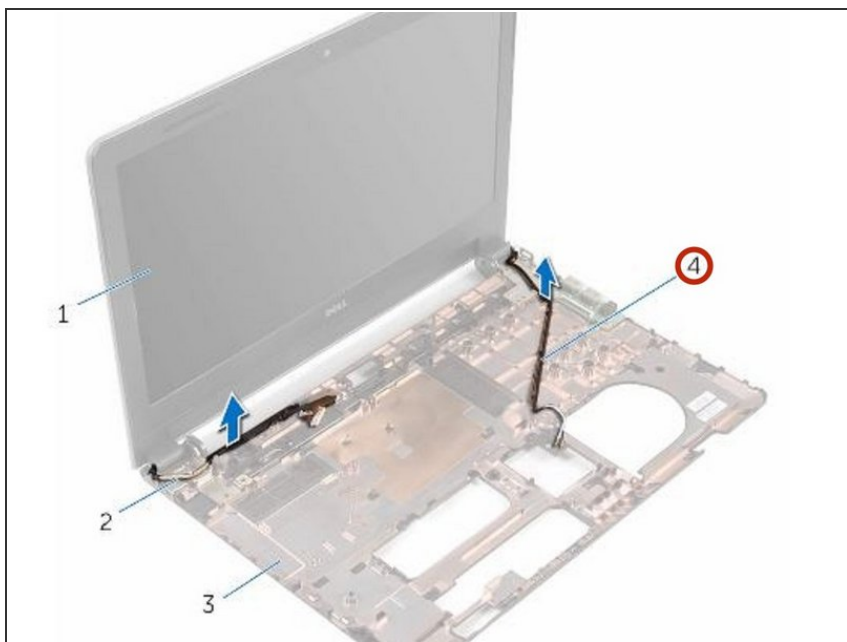
- Replace the screws that secure the display hinges to the computer base.

Step 10 — Route the Display Cable



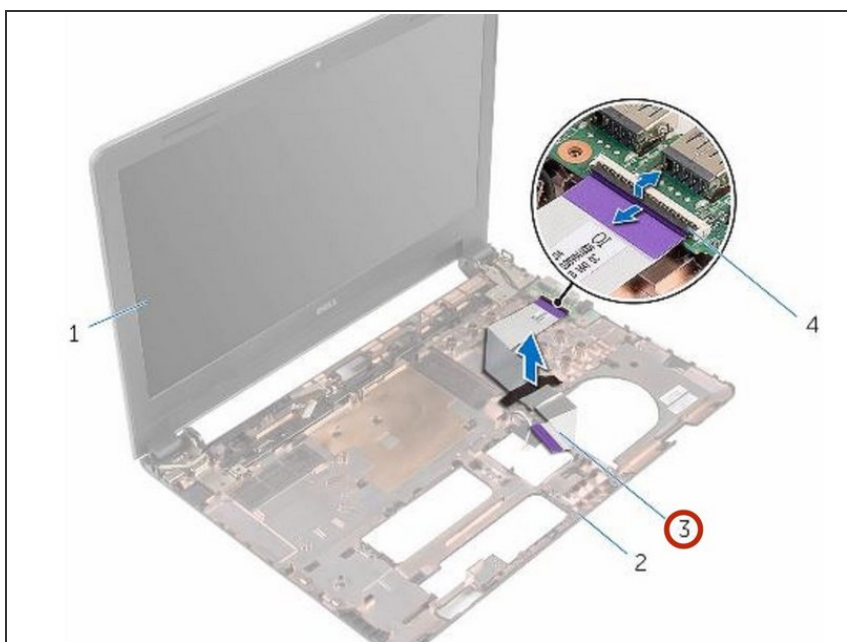
- Route the display cable through the routing guides on the computer base.

Step 11 — Route the Antenna Cables



- Route the antenna cables through the routing guides on the computer base and slide the antenna cables through the slot on the computer base.

Step 12 — Sliding the I/O Board Cable



- Slide the I/O-board cable into the I/O board and close the latch to secure the cable.