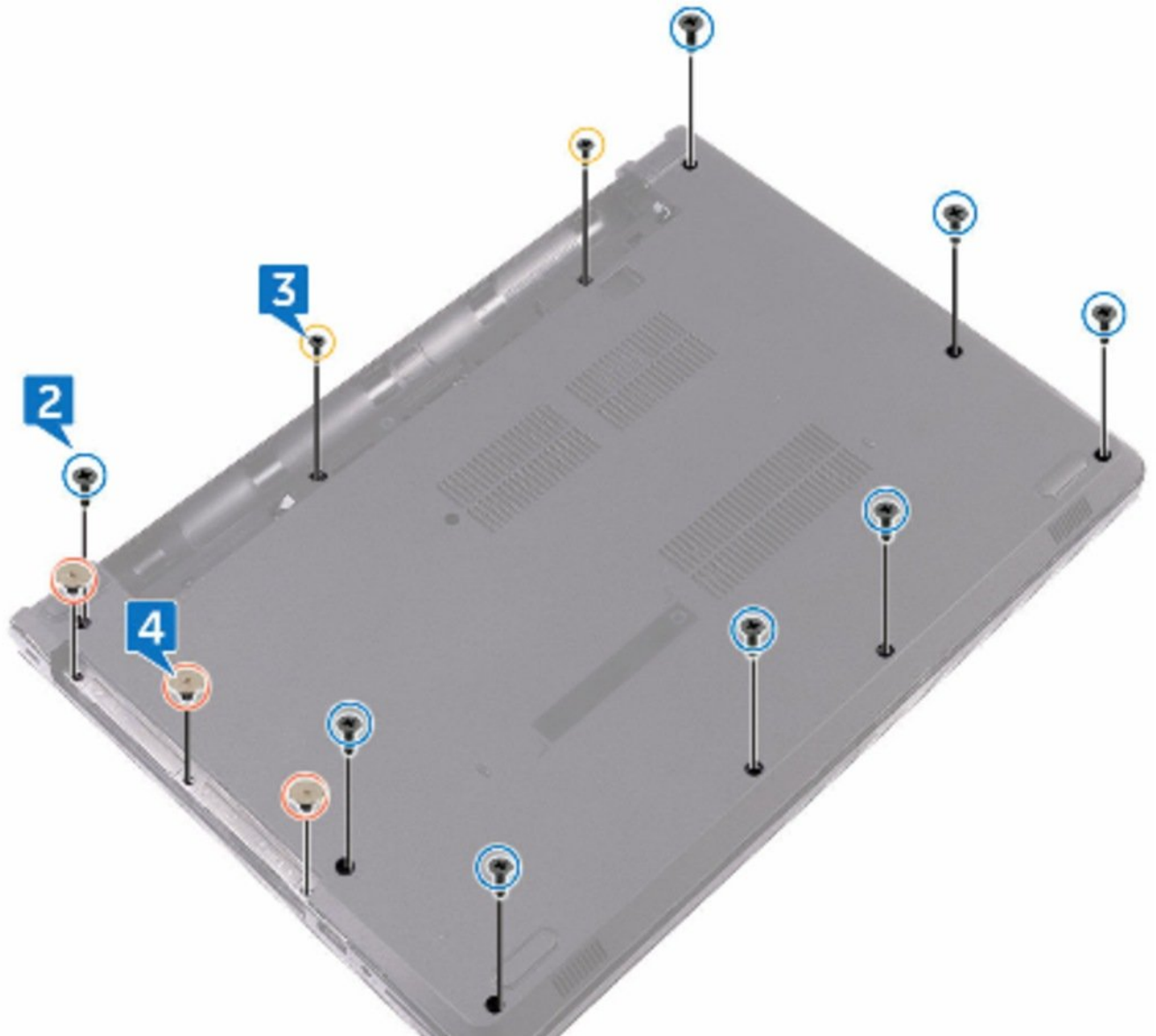




Dell Inspiron 14 3465 Base Cover Replacement

Written By: darrius



INTRODUCTION

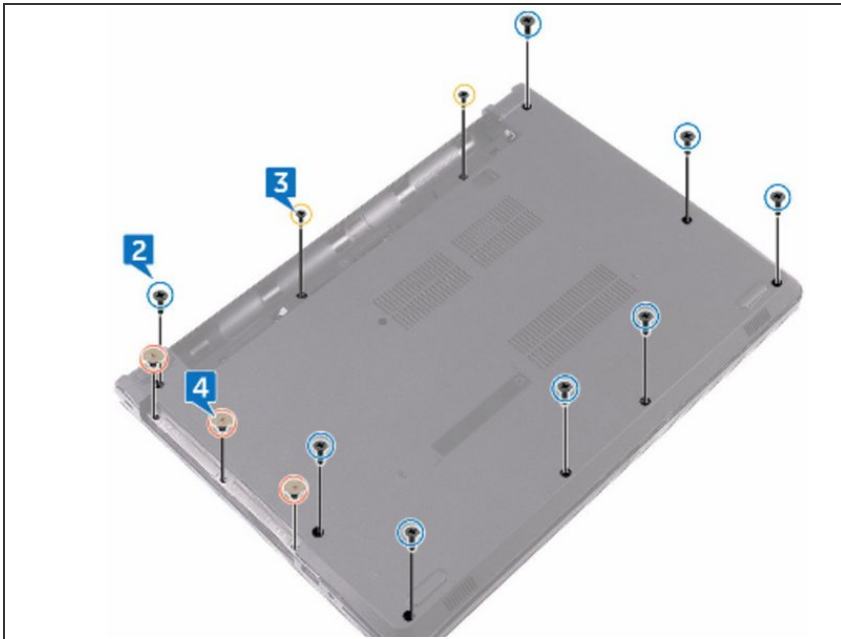
How To Remove And Replace The Base Cover



TOOLS:

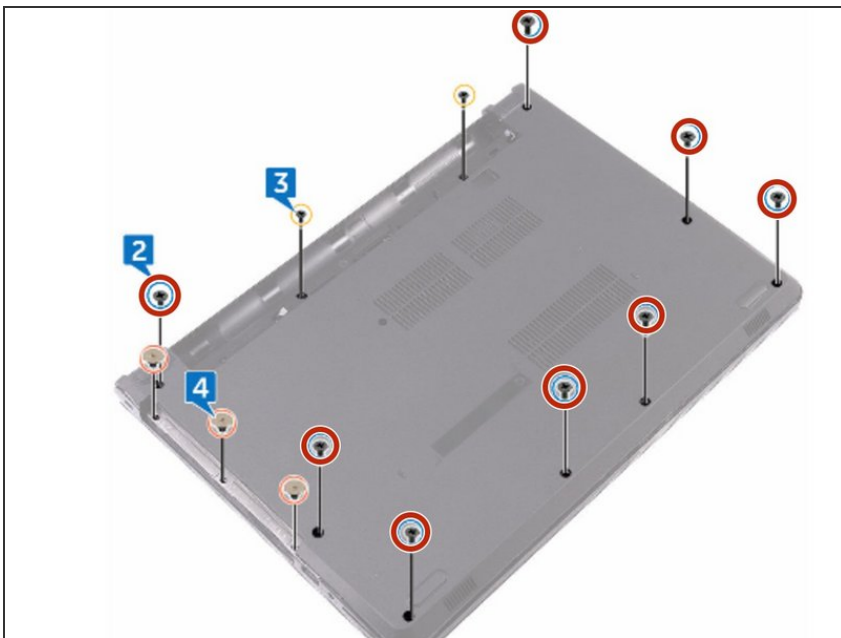
- [Phillips #0 Screwdriver](#) (1)
-

Step 1 — Turning The Computer Over



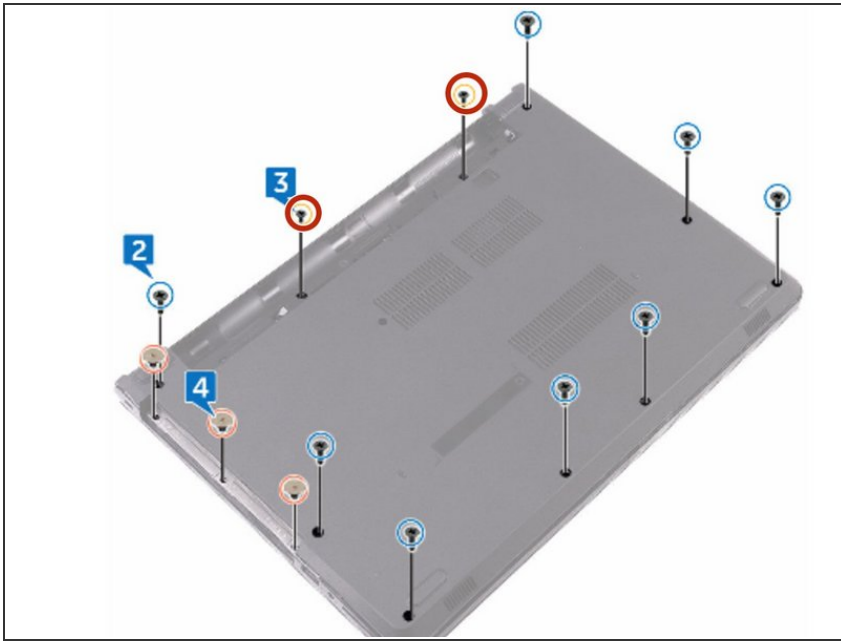
- Close the display, and turn the computer over.

Step 2 — Removing Eight Screws



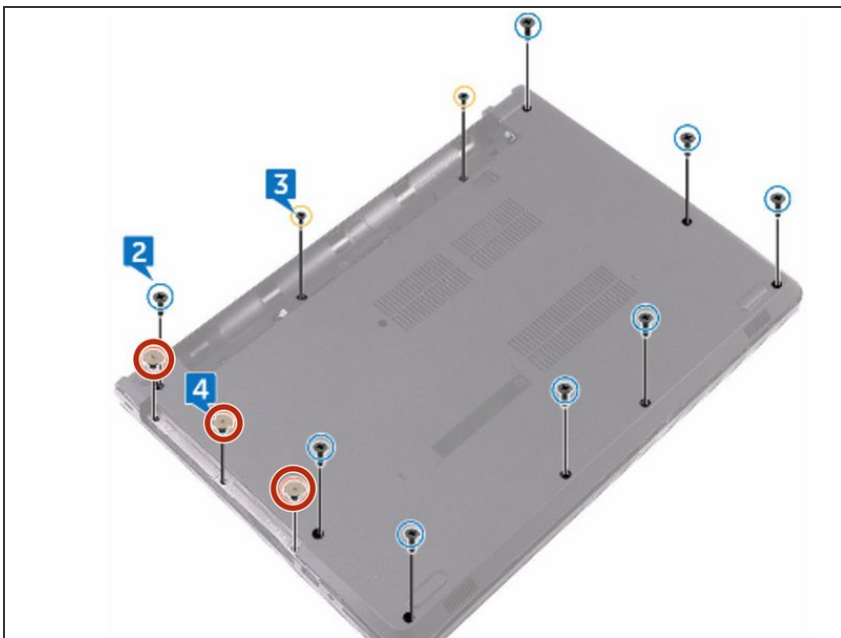
- Remove the eight screws (M2.5x8) that secure the base cover to the palm-rest assembly.

Step 3 — Removing Two Screws



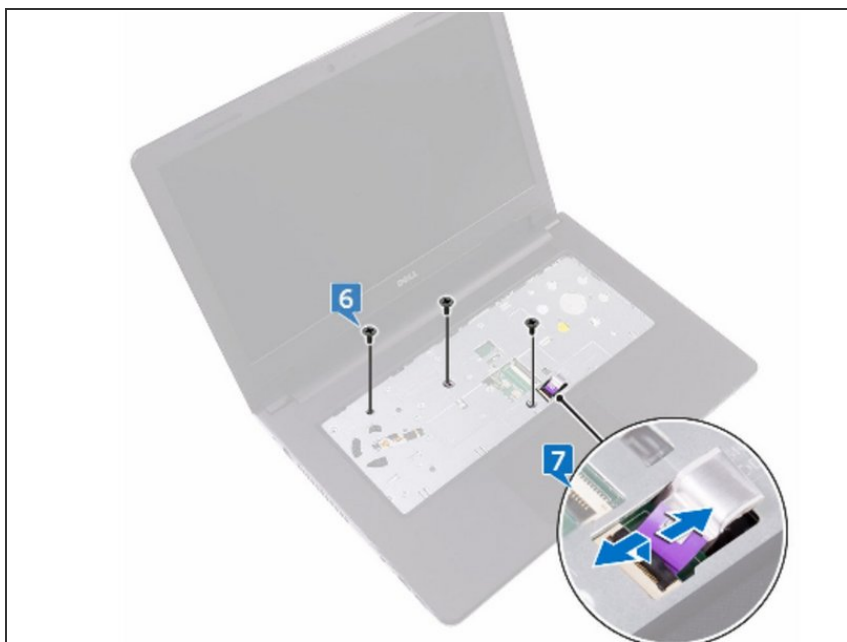
- Remove the two screws (M2x5) that secure the base cover to the palm-rest assembly.

Step 4 — Removing Three Screws



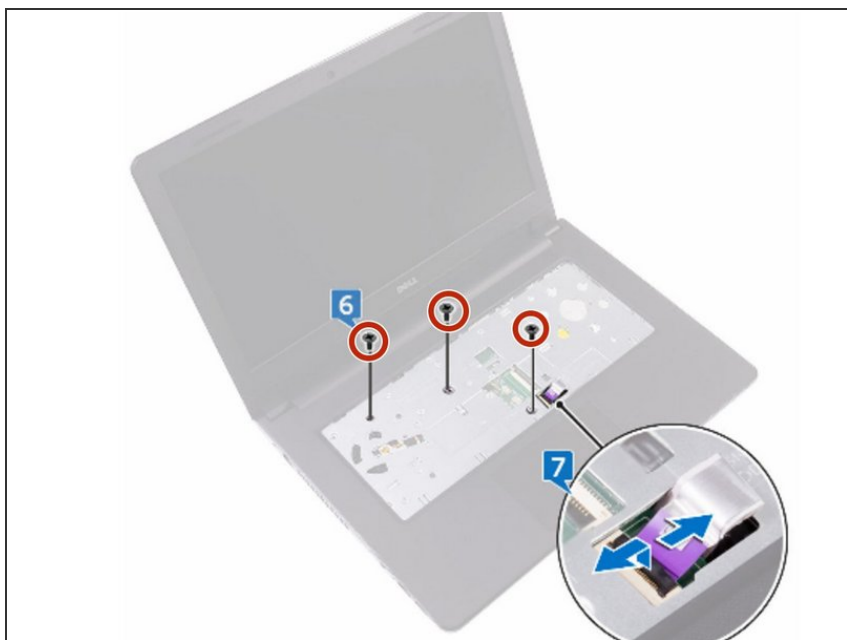
- Remove the three screws (M2x2) that secure the base cover to the palm-rest assembly.

Step 5 — Open The Display



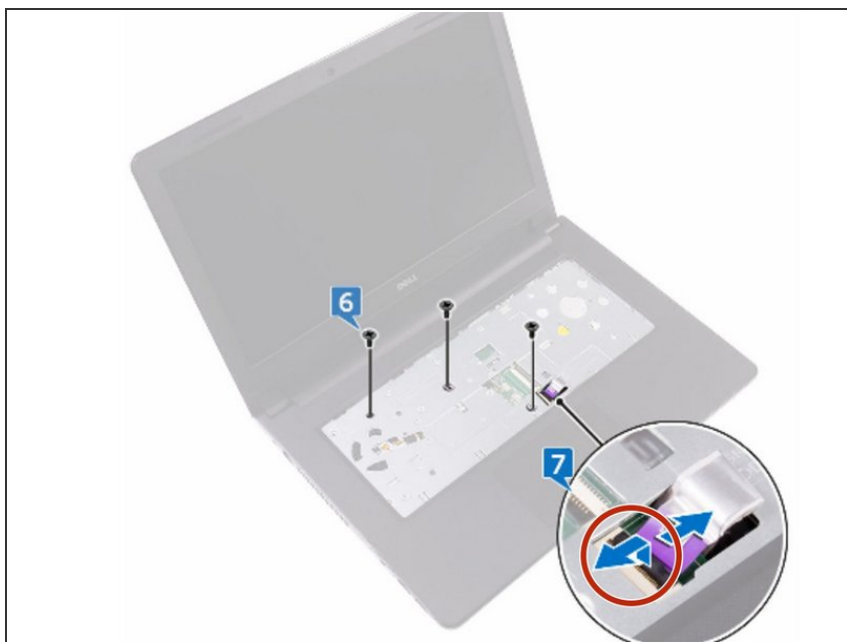
- Turn the computer over, and open the display.

Step 6 — Removing Three Screws



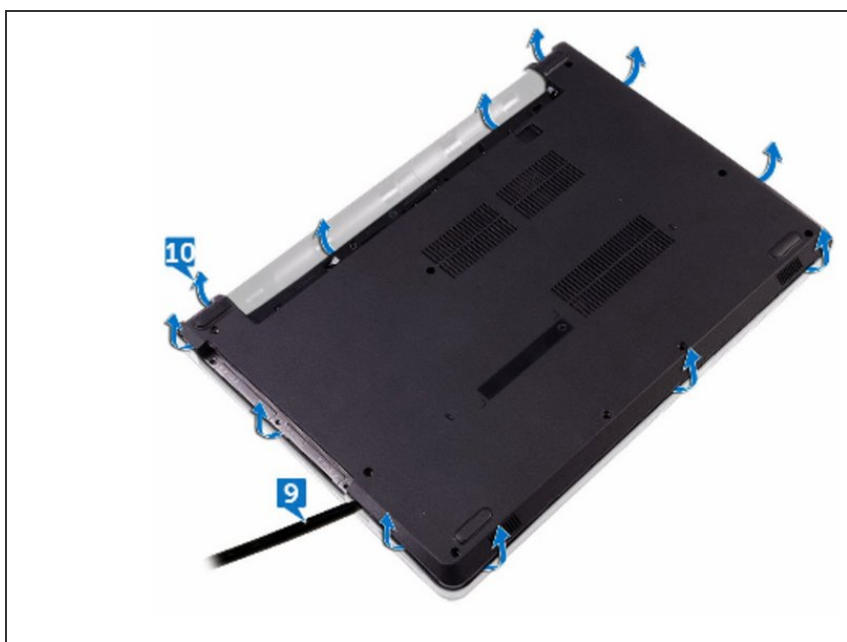
- Remove the three screws (M2x5) that secure the base cover to the palm-rest assembly.

Step 7 — Disconnecting The Optical-Drive Cable



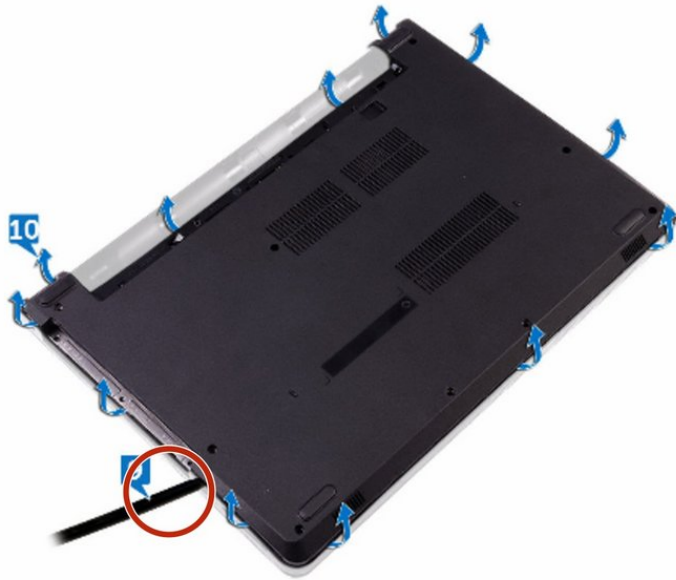
- Open the latch, and disconnect the optical-drive cable from the system board.

Step 8 — Turn Over The Computer



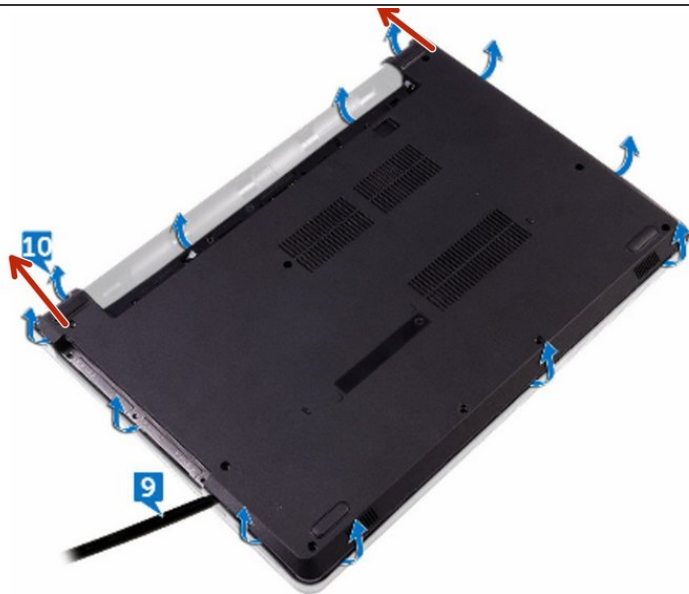
- Close the display, and turn the computer over.

Step 9 — Prying The Base Cover



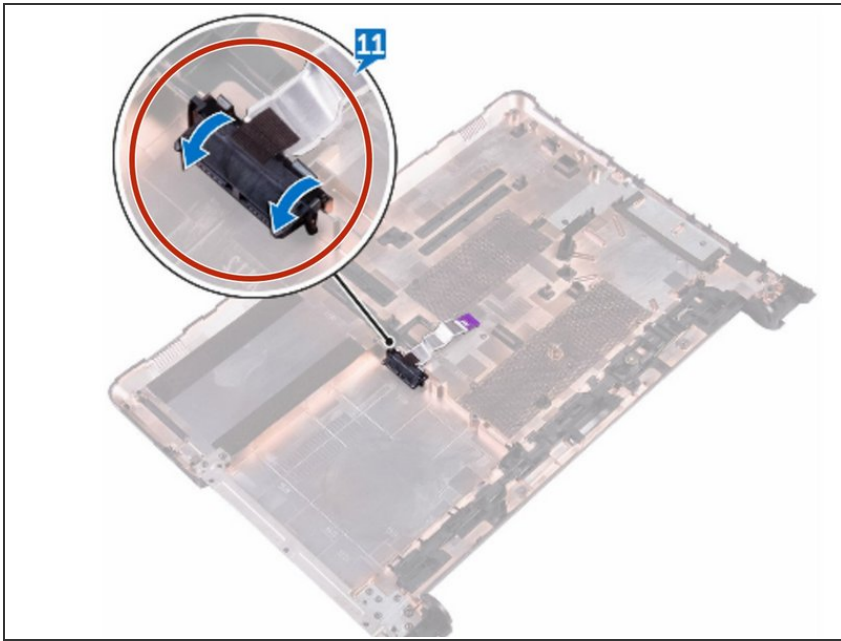
- Using a plastic scribe, pry the base cover off the palm-rest assembly.

Step 10 — Lifting The Base Cover



- Lift the base cover off the palm-rest assembly.

Step 11 — Releasing the optical-drive



- Release the optical-drive interposer from the tabs, and remove it from the base cover.

Step 12 — Sliding the optical-drive



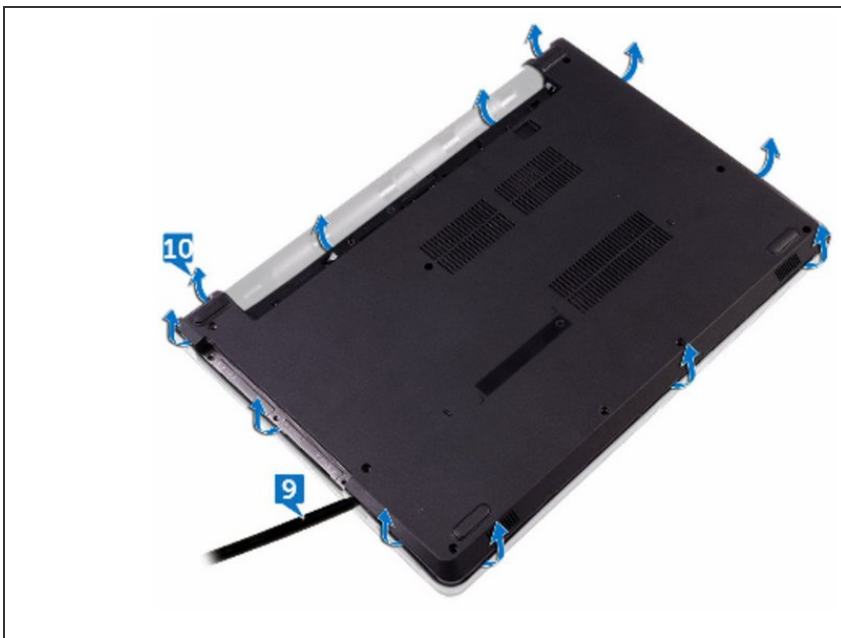
- Slide the optical-drive interposer into the tabs on the **NEW** base cover and snap it into place.

Step 13 — Placing The New Base Cover



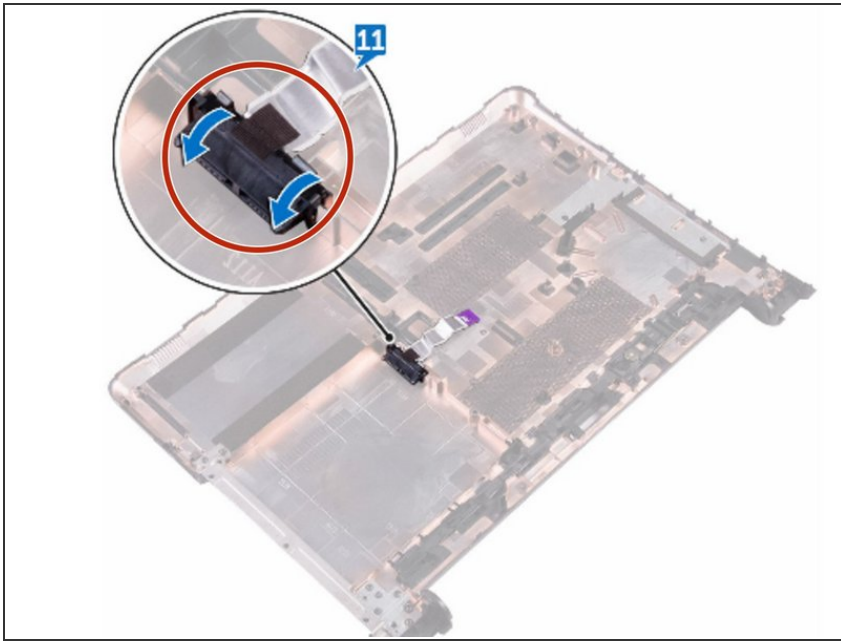
- Place the base cover on the palm-rest assembly and route the optical-drive cable through the slot on the palm-rest assembly.

Step 14 — Sliding The Tabs



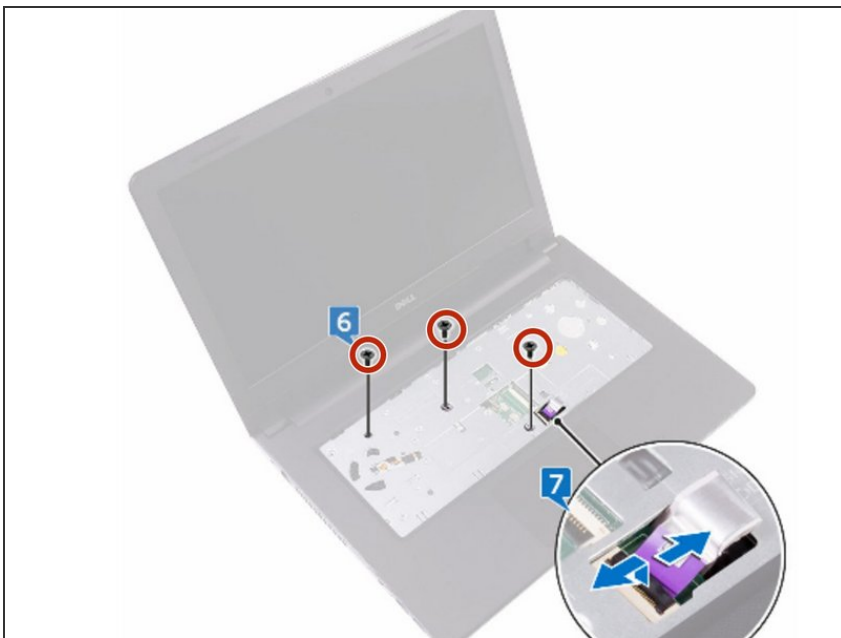
- Slide the tabs on the base cover into the slots on the palm-rest assembly, and snap the base cover into place.

Step 15 — Sliding The Optical-Drive Cable



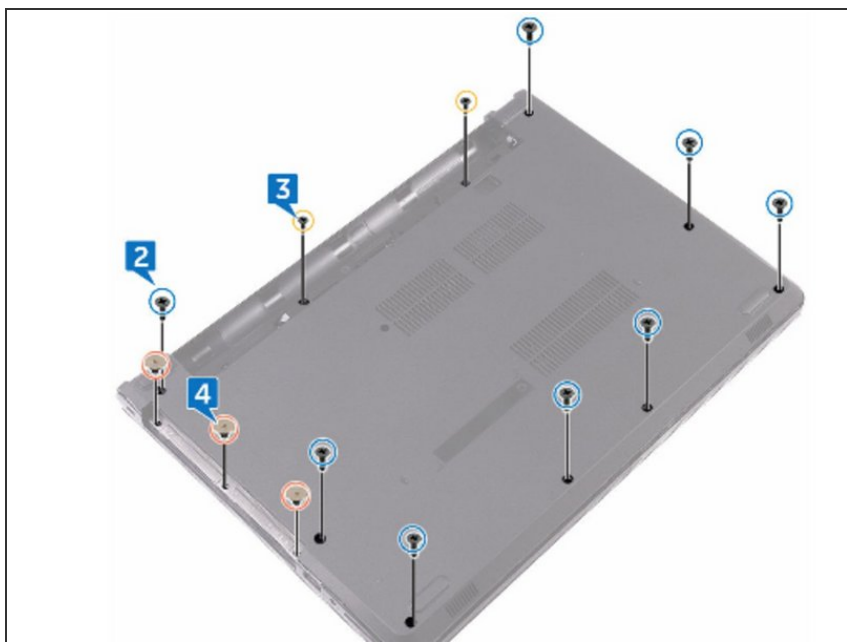
- Slide the optical-drive cable into the connector on the system board and press down the latch to secure the cable.

Step 16 — Replacing The Three Screws



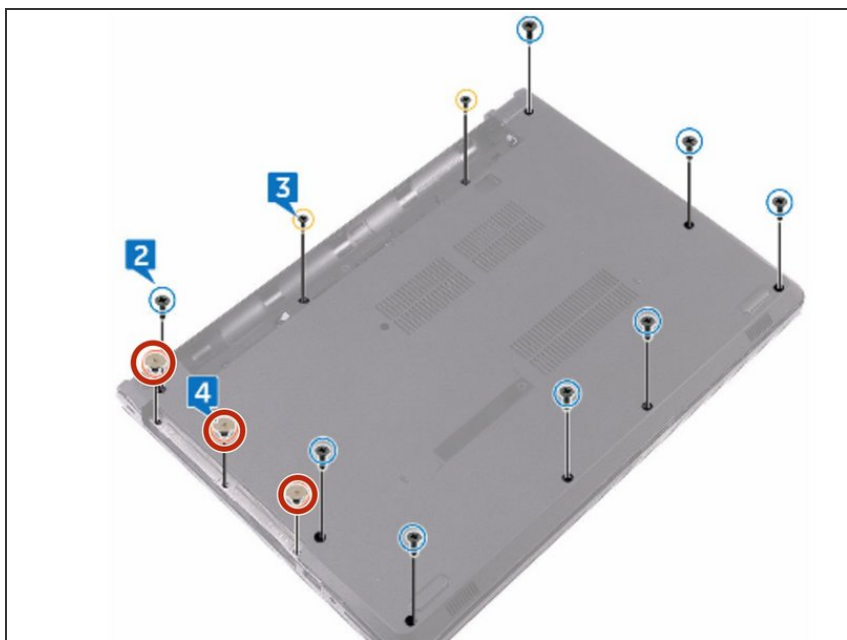
- Replace the three screws (M2x5) that secure the base cover to the palm-rest assembly.

Step 17 — Turn Over The Computer



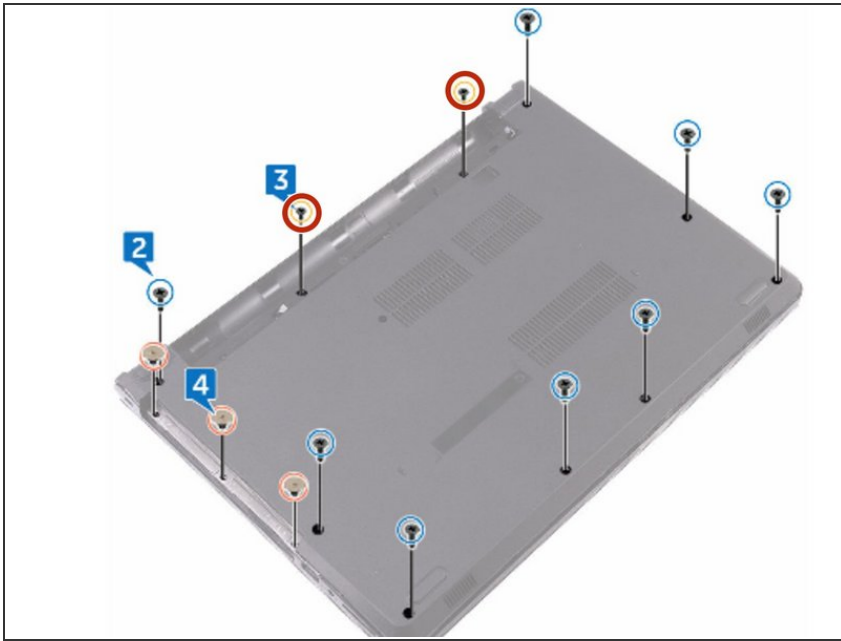
- Close the display, and turn the computer over.

Step 18 — Replacing The Three Screws



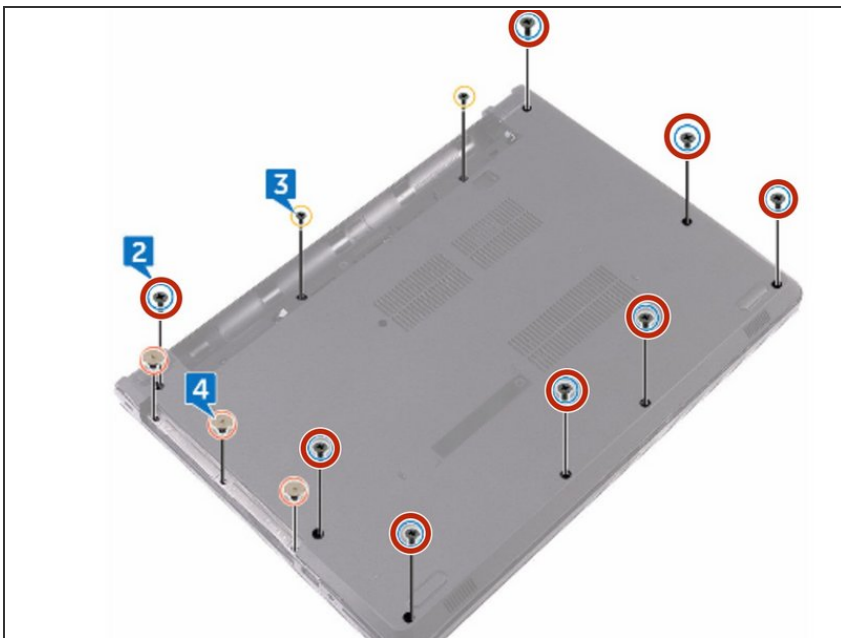
- Replace the three screws (M2x2) that secure the base cover to the palm-rest assembly.

Step 19 — Replacing The Two Screws



- Replace the two screws (M2x5) that secure the base cover to the palm-rest assembly.

Step 20 — Replacing The Eight Screws



- Replace the eight screws (M2.5x8) that secure the base cover to the palm-rest assembly

To reassemble your device, follow these instructions in reverse order.