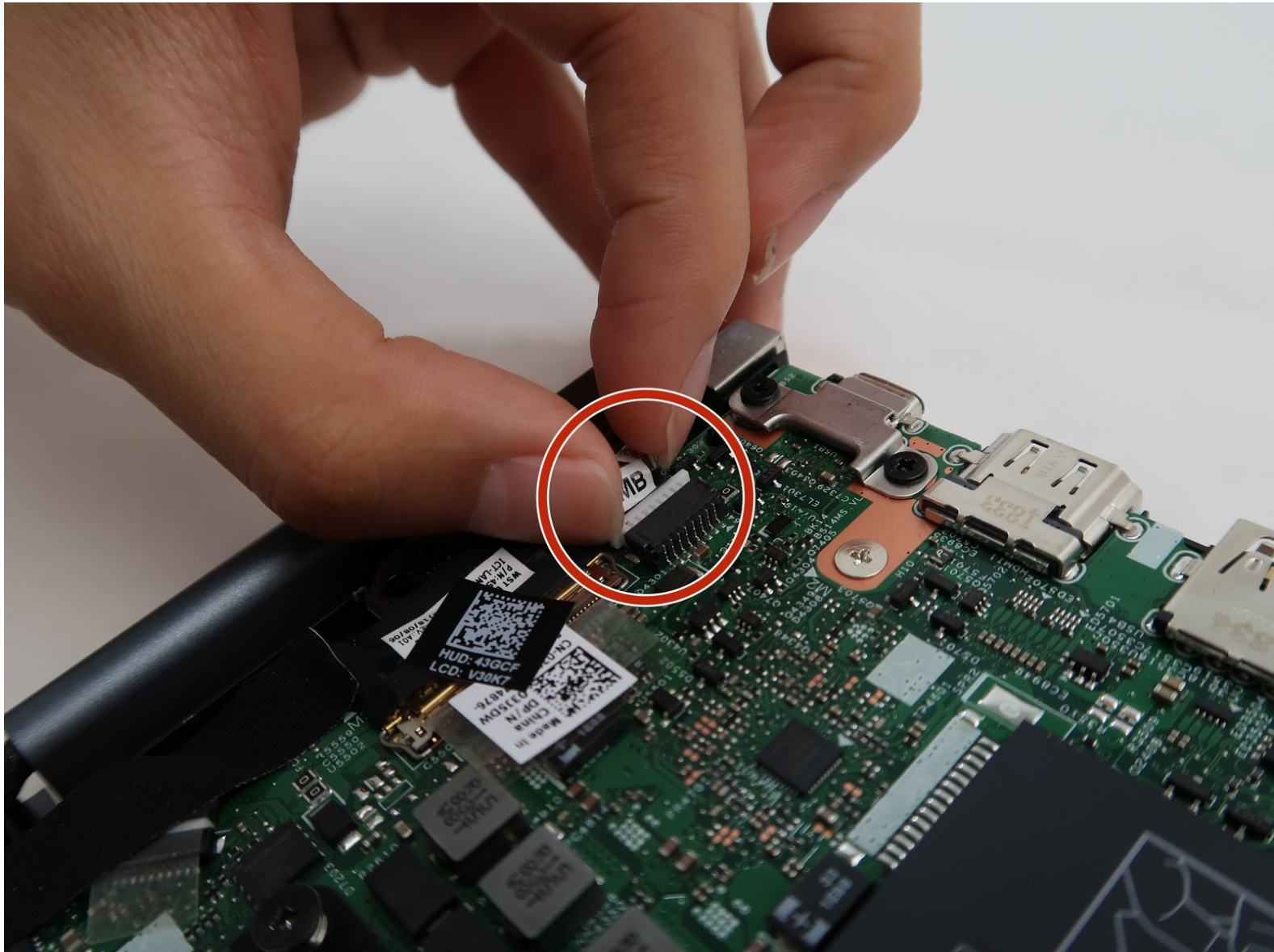




# Dell Inspiron 14 5100 Power Adapter Port Replacement

Use this guide to replace the power adapter port in your Dell Inspiron 14 5100.

Written By: Ting-Hao Lao



---

## INTRODUCTION

Verify with the device's [troubleshooting page](#) whether the replacement of your power adapter port is required for your situation.

This guide will go through the process of replacing the power adapter port for the Dell Inspiron 14 5100.

A faulty power adapter port can cause your device to never be charge or randomly shut down due to the lack of connection between the charger and the battery and to the motherboard.

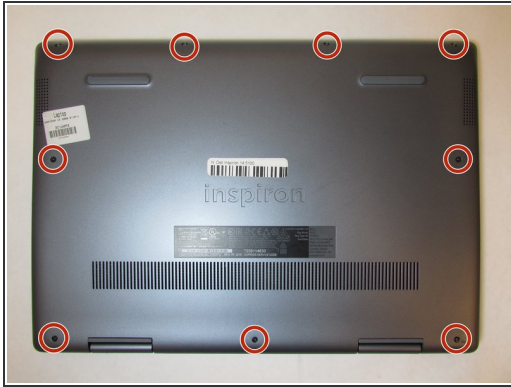
If this guide is unnecessary, go to our [device page](#) to look for the correct guide for your situation.


---

### TOOLS:

- [Phillips #0 Screwdriver](#) (1)
  - [iFixit Opening Tools](#) (1)
-

## Step 1 — Dell Inspiron 14 5100 Disassembly



 Make sure to disconnect the power source to the device.

- Remove nine screws securing the base cover of the laptop's keyboard assembly using the Phillips #0 screwdriver.
- There are 2 sets of screws.
  - Remove the 3 captive screws.
  - Remove the 6M2\*6 screws.

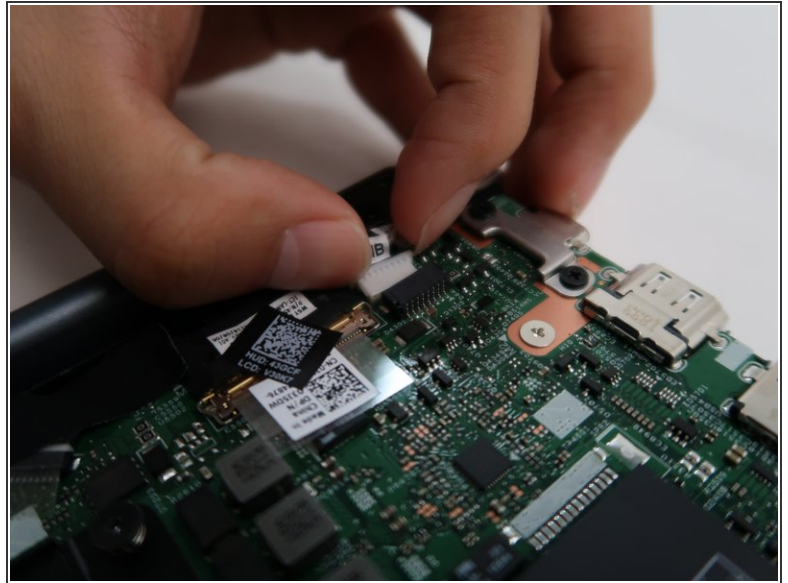
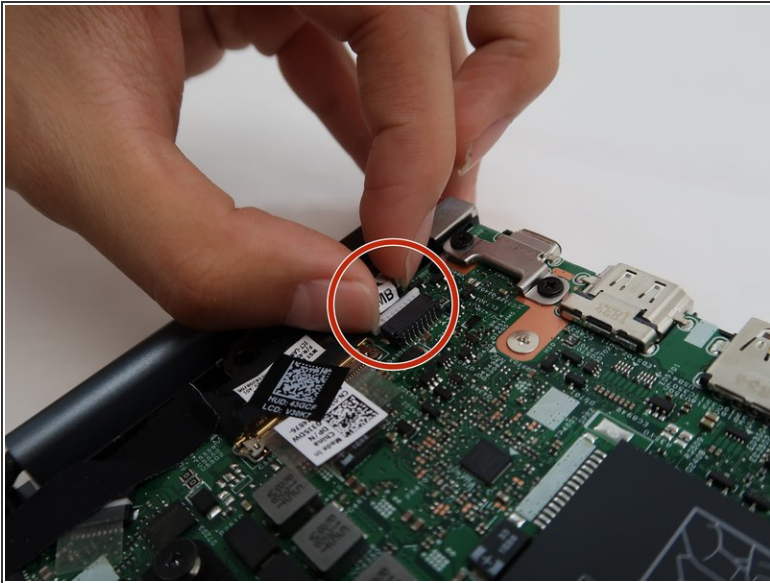
## Step 2



- Pry open the laptop to separate the base cover from the keyboard assembly.
- You may use your fingertips or use plastic opening tools.

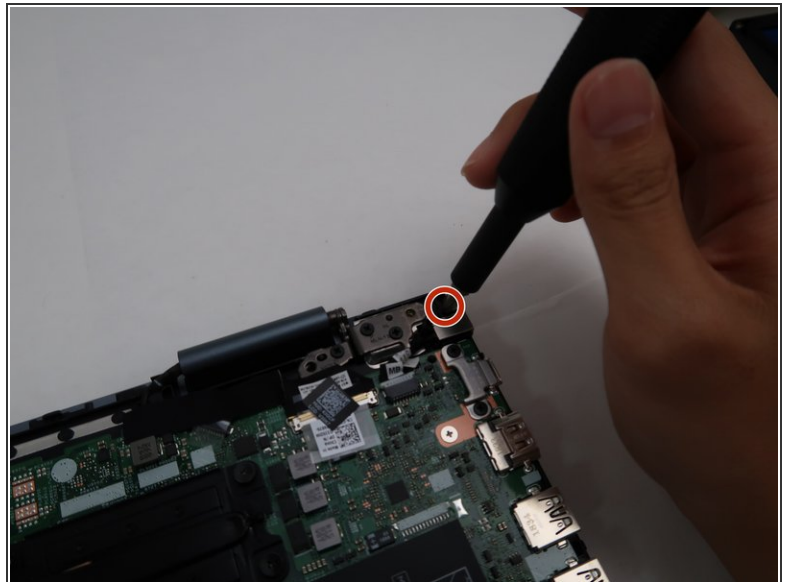
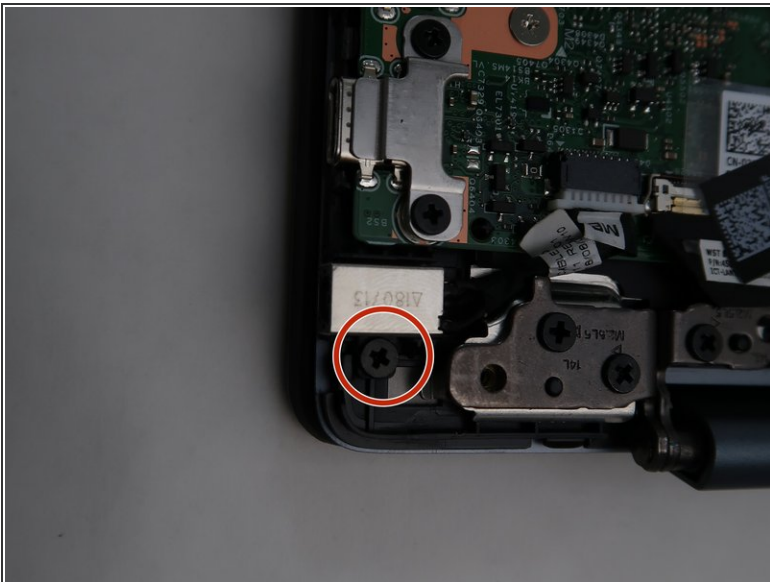


### Step 3 — Power Adapter Port



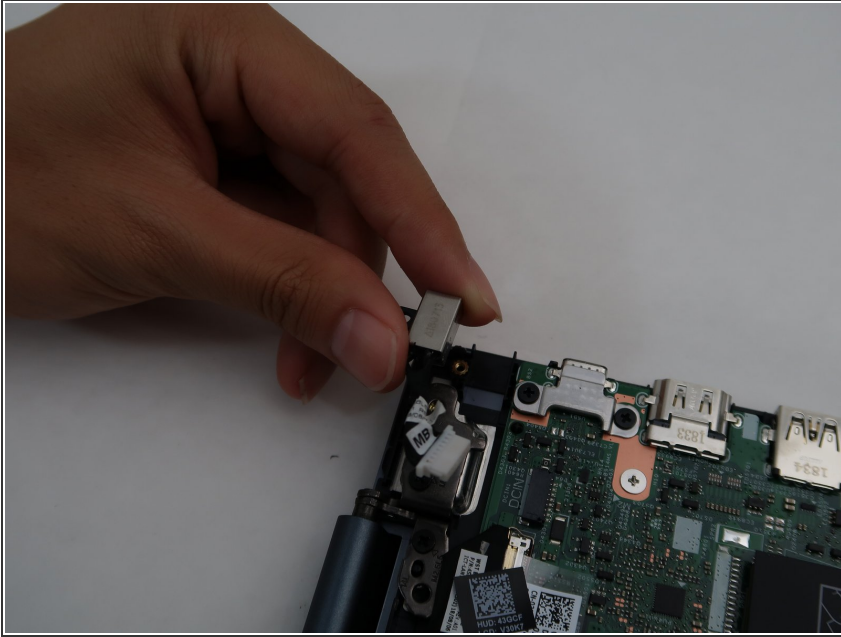
- Disconnect the power-adapter port cable from the motherboard.

### Step 4



- Remove the two screws securing the power adapter port to the keyboard assembly using the Phillips #0 screwdriver.

## Step 5



- Remove the power adapter port and remove it from the device.

To reassemble your device, follow these instructions in reverse order.