



Dell Inspiron 14 5443 Battery Replacement

Written By: darrius



INTRODUCTION

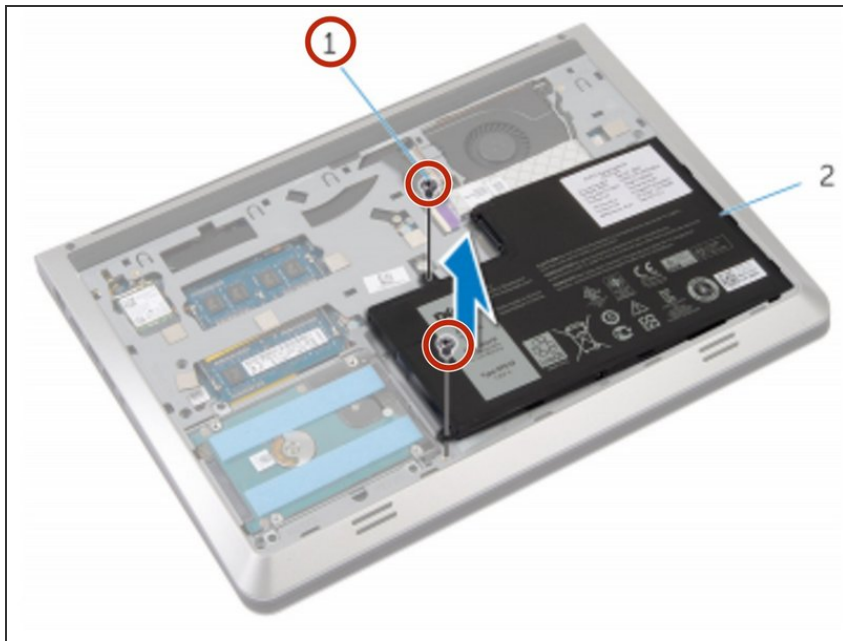
How To Remove and Replace the Battery.



TOOLS:

- [Phillips #0 Screwdriver](#) (1)
-

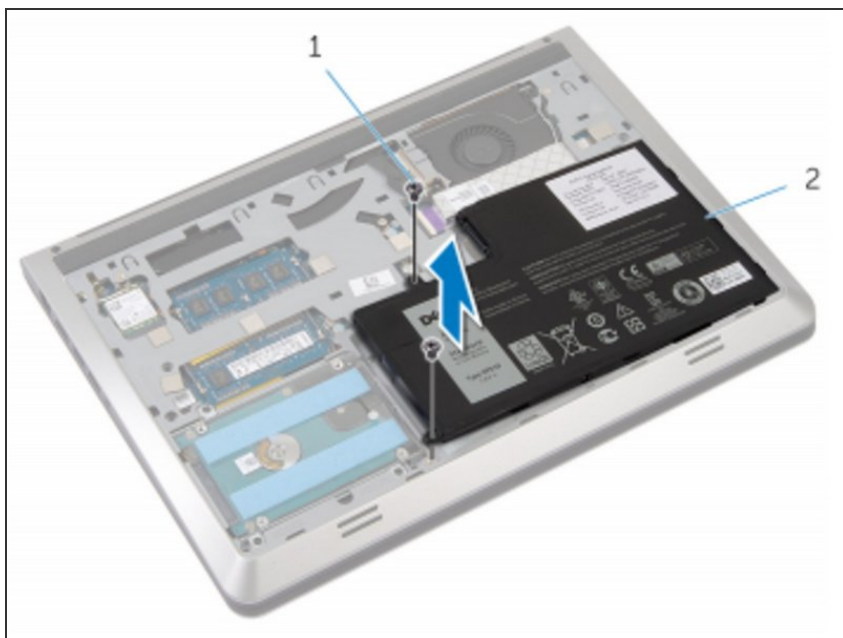
Step 1 — Removing Screws



⚠ WARNING: Before working inside your computer, read the safety information that shipped with your computer and follow the steps in [Before Working Inside Your Computer](#). After working inside your computer, follow the instructions in [After Working Inside Your Computer](#).

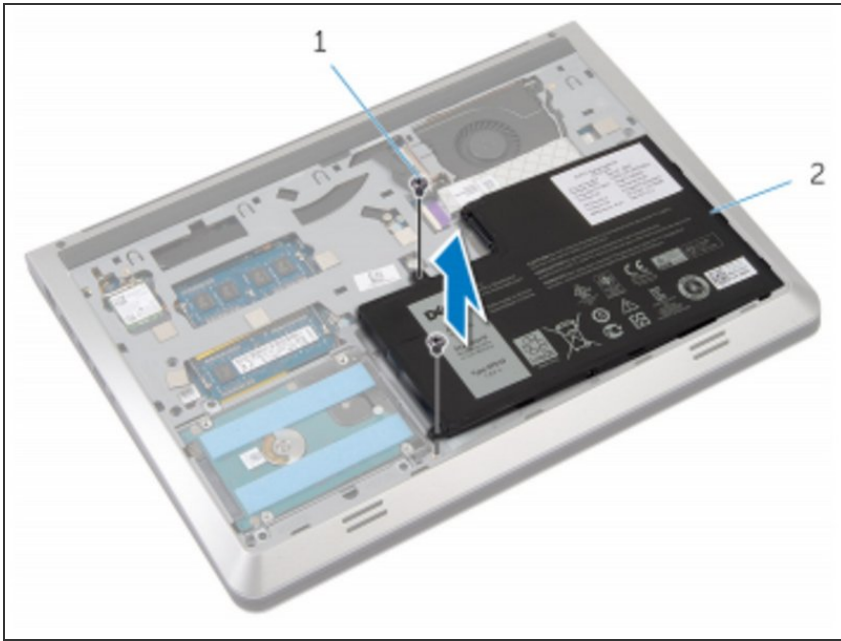
- Remove the screws that secure the battery to the base frame.

Step 2 — Lifting The Frame



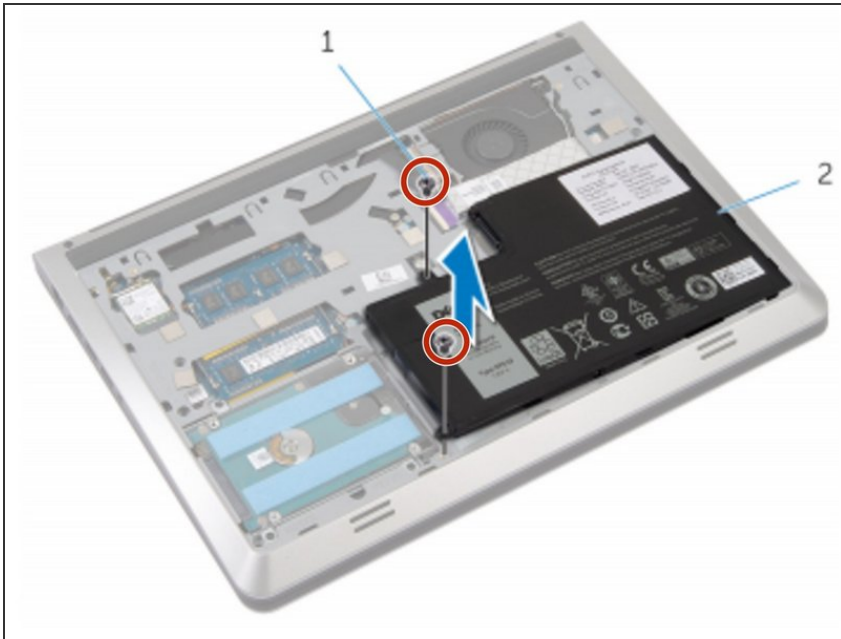
- Lift the battery off the base frame.

Step 3 — Turning Over The Computer



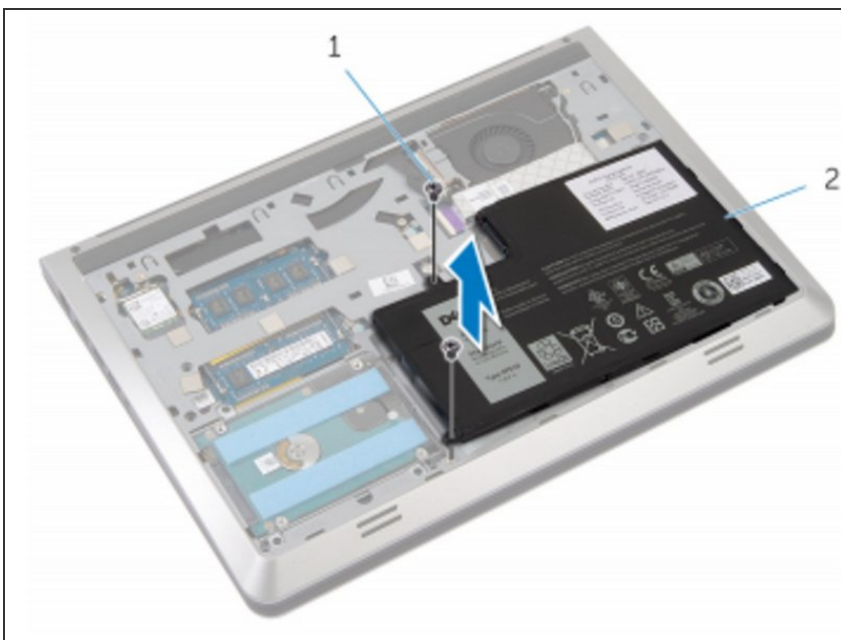
- Turn the computer over, open the display, and press the power button for five seconds to ground the system board.

Step 4 — Connect The New Battery



- Align the screw holes on the **New** battery with the screw holes on the base frame and press down on the battery to connect it to the battery connector.

Step 5 — Replace the Screws



- Replace the screws that secure the battery to the base frame.