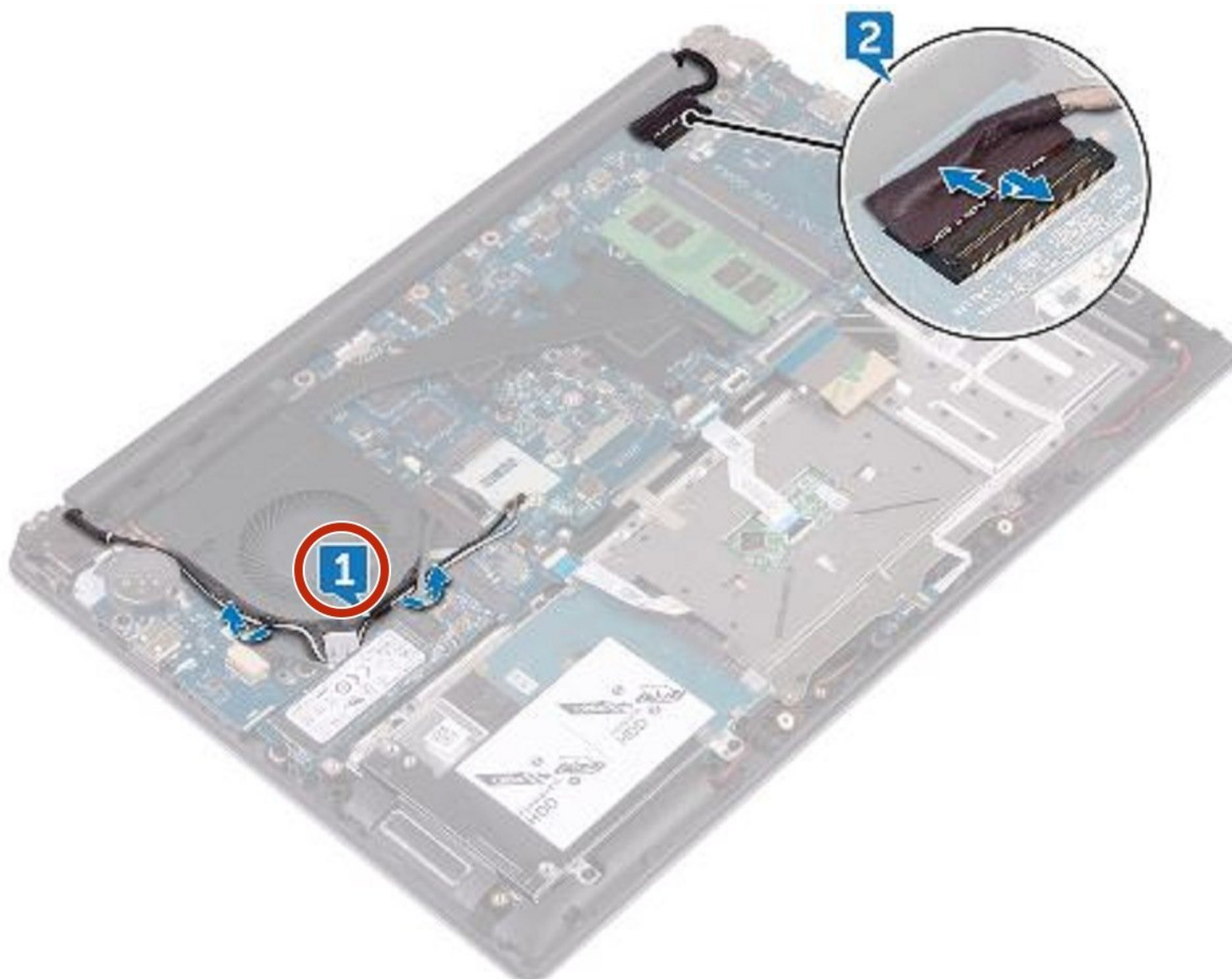




# Dell Inspiron 14 7460 Display Assembly Replacement

Written By: Terrence15



---

## INTRODUCTION

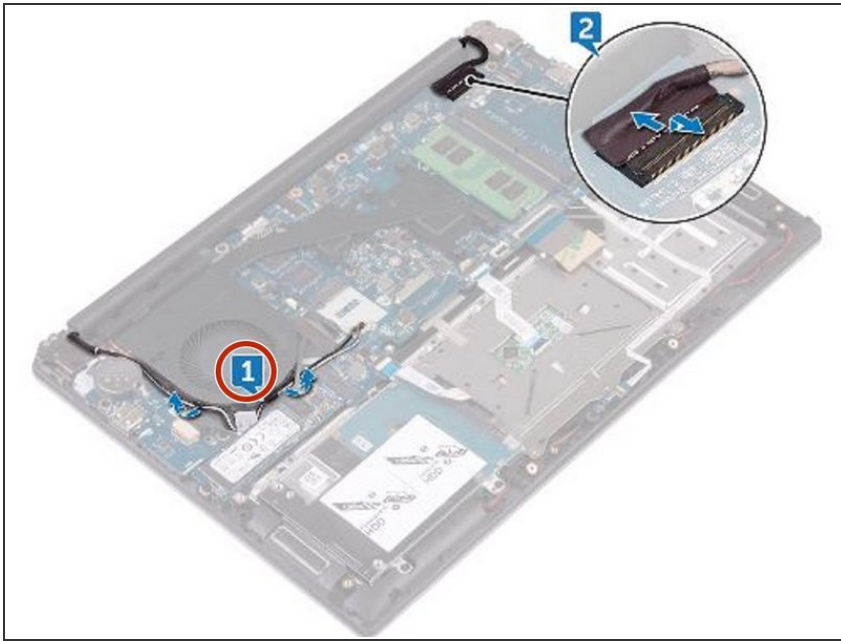
In this guide, we will be showing you how to remove and replace the Display Assembly.



### TOOLS:

- [Phillips #0 Screwdriver](#) (1)
-

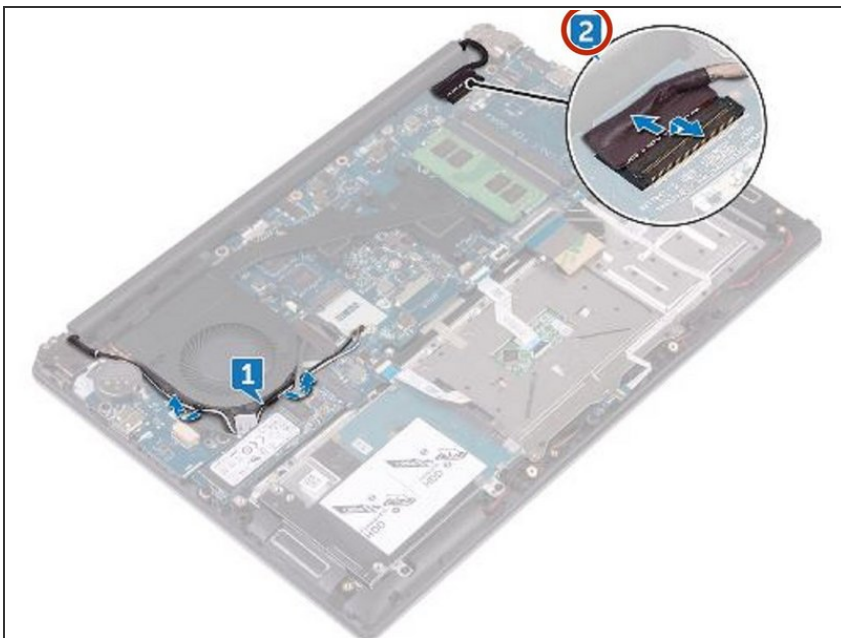
## Step 1 — Remove the Antenna Cables



**⚠ WARNING:** Before working inside your computer, read the safety information that shipped with your computer and follow the steps in [Before Working Inside Your Computer](#). After working inside your computer, follow the instructions in [After Working Inside Your Computer](#).

- Note the routing and remove the antenna cables from the routing guides on the fan.

## Step 2 — Disconnecting the Display Cables



- Open the latch and disconnect the display cable from the system board.

### Step 3 — Placing the Computer



- Open the display at an angle of 90 degrees.
- Place the computer on the edge of a table so that the palm rest and keyboard assembly is on the table and the display assembly extends past the table edge with the display hinges facing up.

### Step 4 — Remove the Screws



- Remove the four screws (M2.5x5) that secure the display hinges to the palm rest and keyboard assembly.



## Step 5 — Lifting the Display Assembly



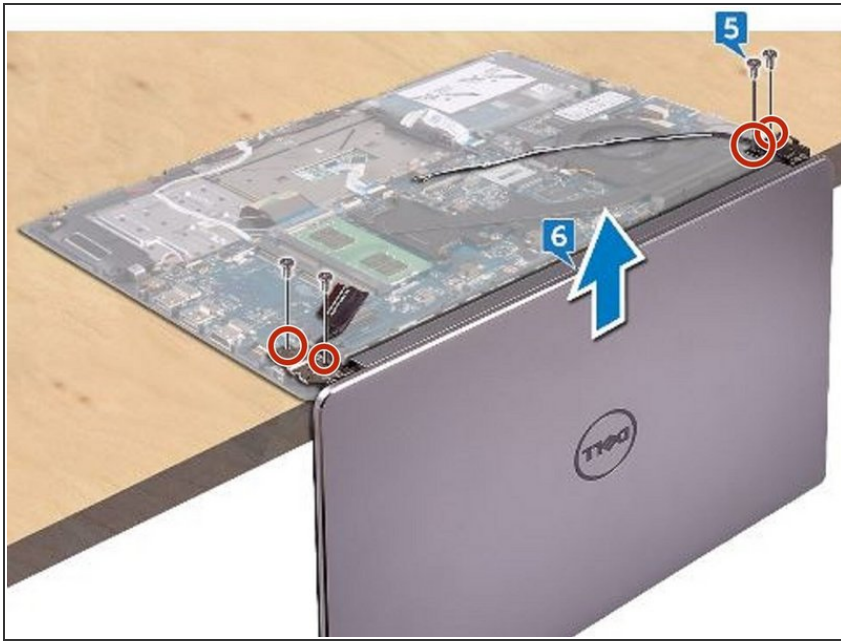
- Lift the display assembly off the palm rest and keyboard assembly.

## Step 6 — Placing the Palm Rest



- Place the palm rest and keyboard assembly on the edge of a table with the keyboard facing down.

## Step 7 — Align the Screw Holes



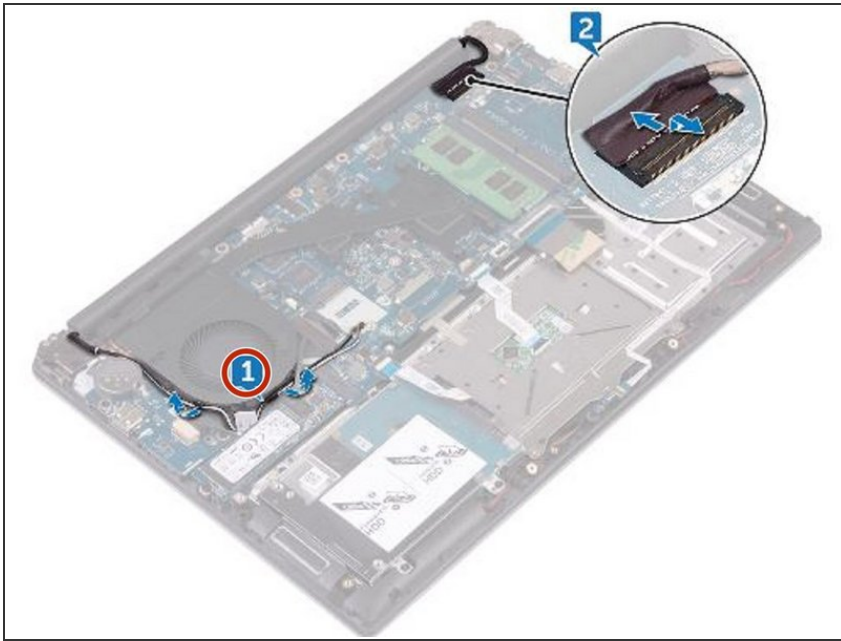
- Align the screw holes on the display hinges with the screw holes on the palm rest and keyboard assembly.

## Step 8 — Replace the Screws



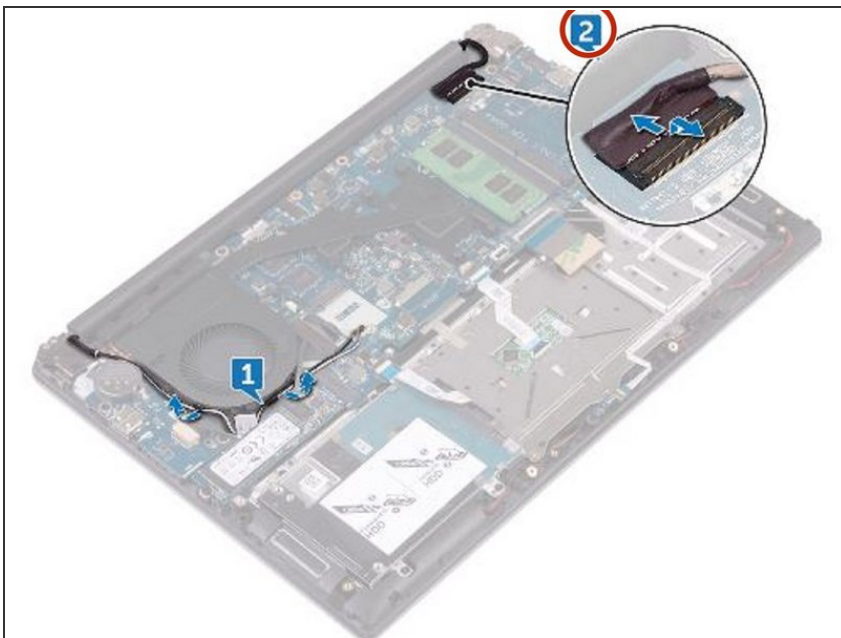
- Replace the four screws (M2.5x5) that secure the **NEW** display assembly to the palm rest and keyboard assembly.

## Step 9 — Securing the Display Cable



- Close the display and turn the computer over.
- Slide the display cable into the connector on the system board and close the latch to secure the cable.

## Step 10 — Routing the Antenna Cables



- Route the antenna cables through the routing guides on the fan.

To reassemble your device, follow these instructions in reverse order.