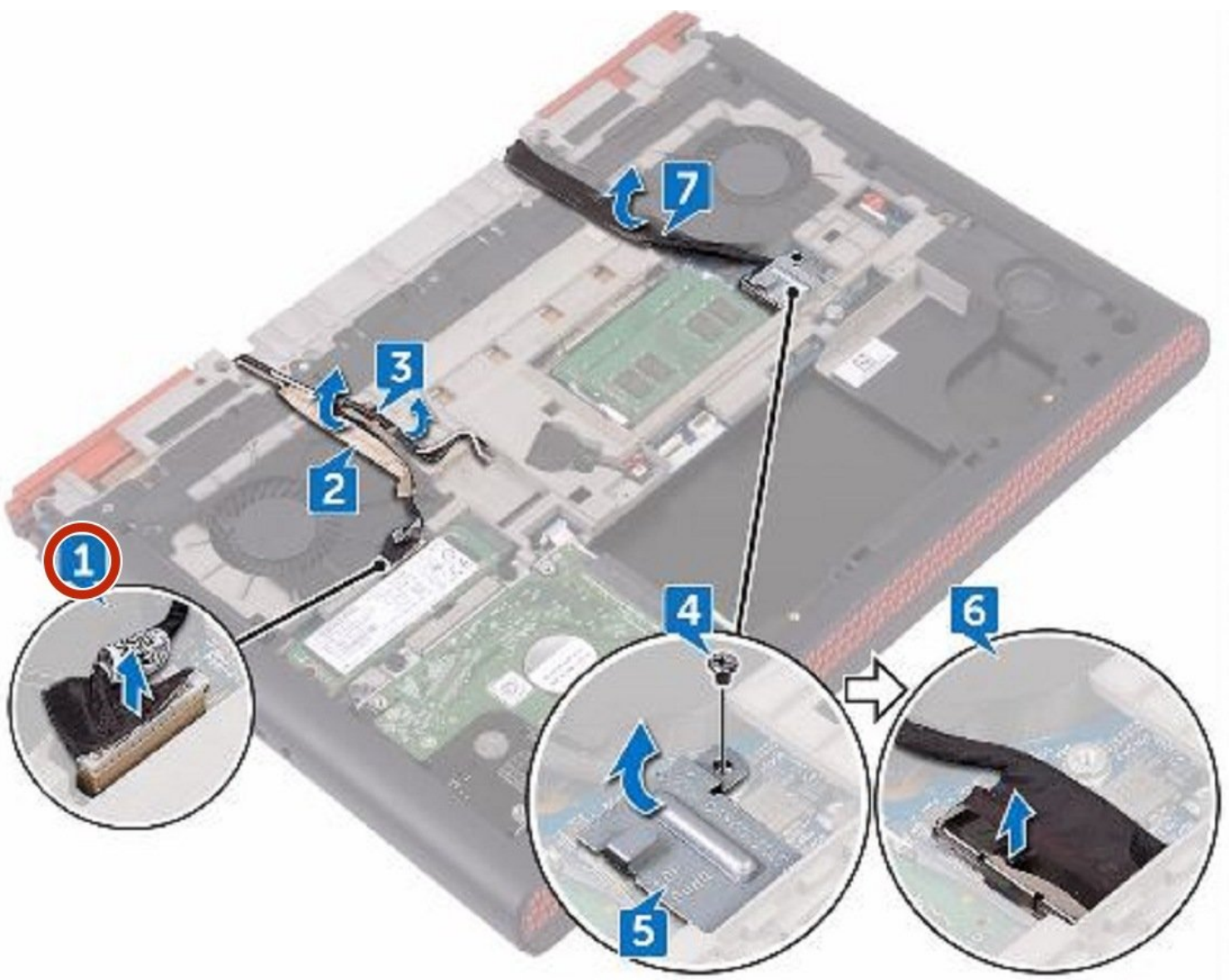




Dell Inspiron 14 Gaming 7467 Display Assembly Replacement

Written By: Terrence15



INTRODUCTION

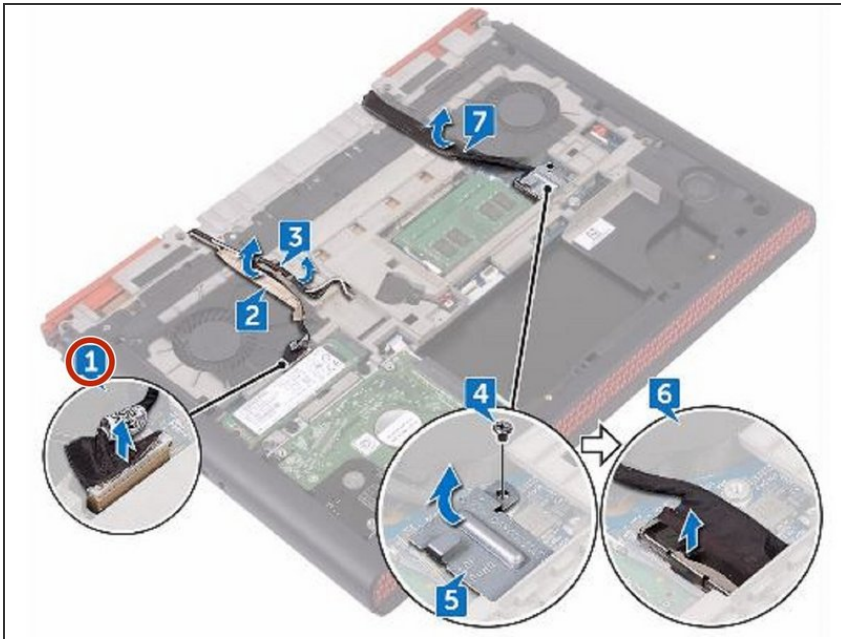
In this guide, we will show you how to remove and replace the Display Assembly.



TOOLS:

- [Phillips #0 Screwdriver](#) (1)
-

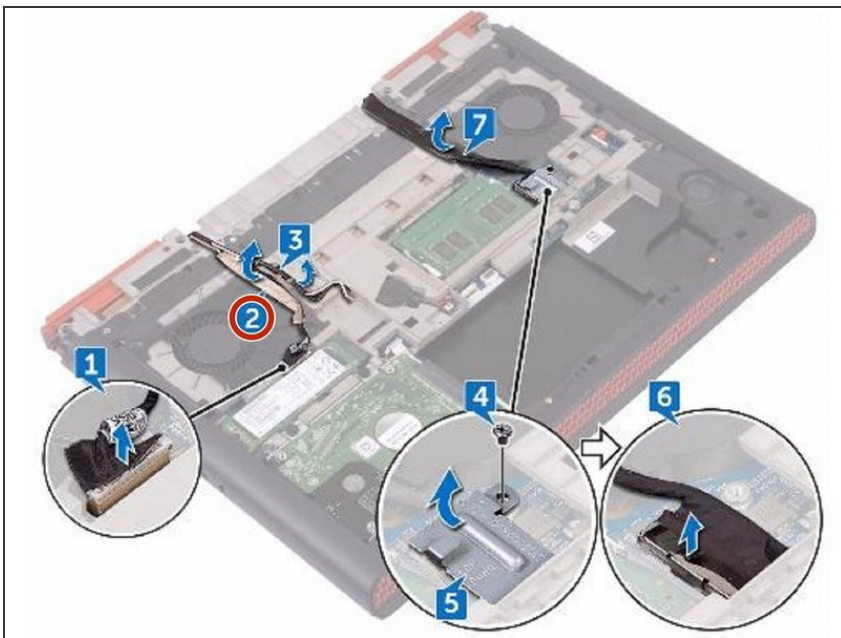
Step 1 — Disconnecting the Camera Cable



⚠ WARNING: Before working inside your computer, read the safety information that shipped with your computer and follow the steps in [Before Working Inside Your Computer](#). After working inside your computer, follow the instructions in [After Working Inside Your Computer](#).

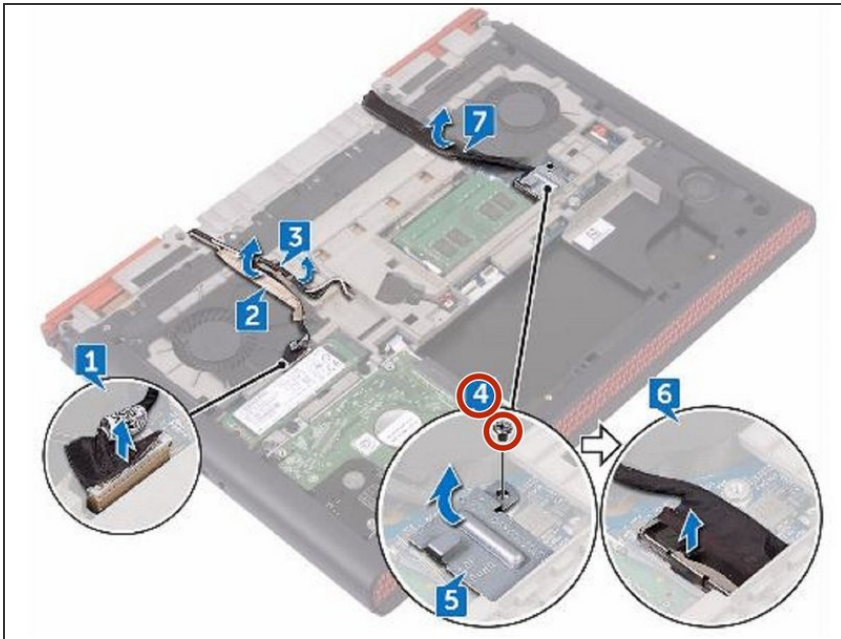
- Using the pull-tab, disconnect the camera cable from the system board.

Step 2 — Peel the Camera Cable



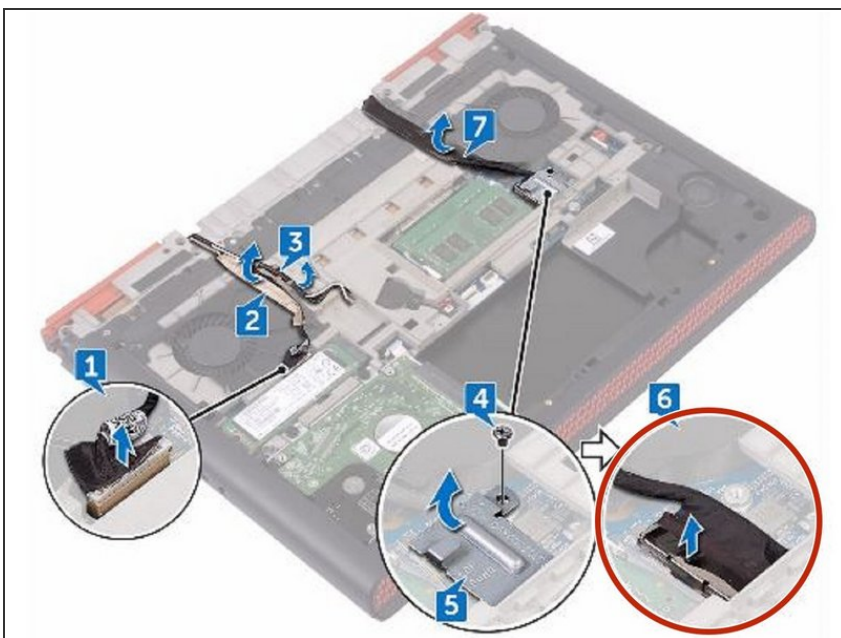
- Peel off the camera cable from the computer base.

Step 3 — Remove the Screw



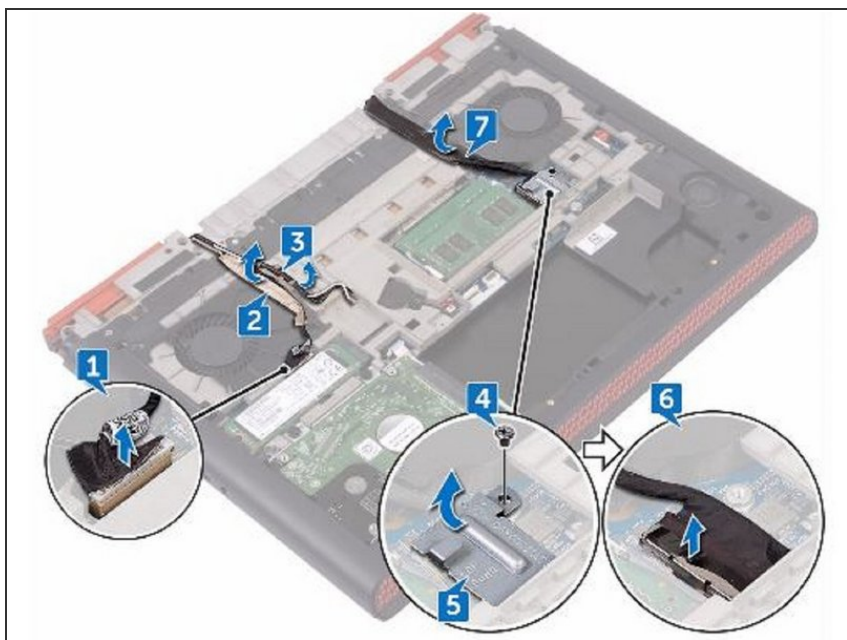
- Remove the screw (M2x3) that secures the display-cable bracket to the system board.

Step 4 — Removing the Cable Bracket



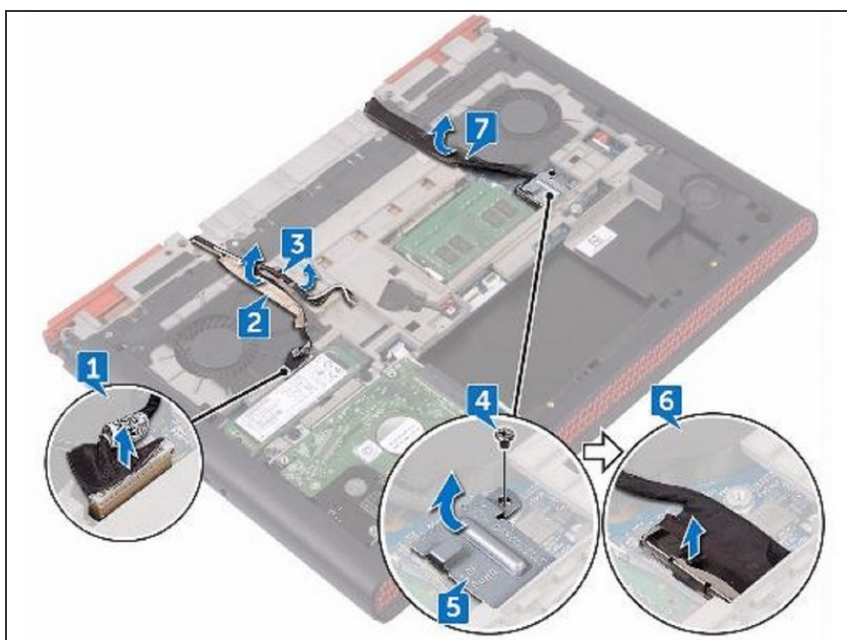
- Lift the display-cable bracket off the system board.

Step 5 — Disconnecting the Display Cable



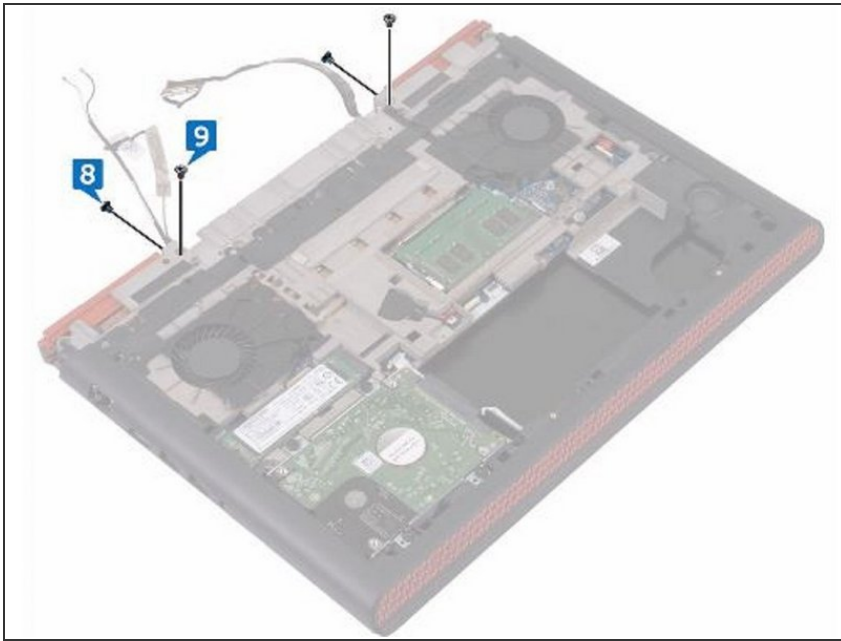
- Using the pull-tab, disconnect the display cable from the system board.

Step 6 — Peeling the Display Cable



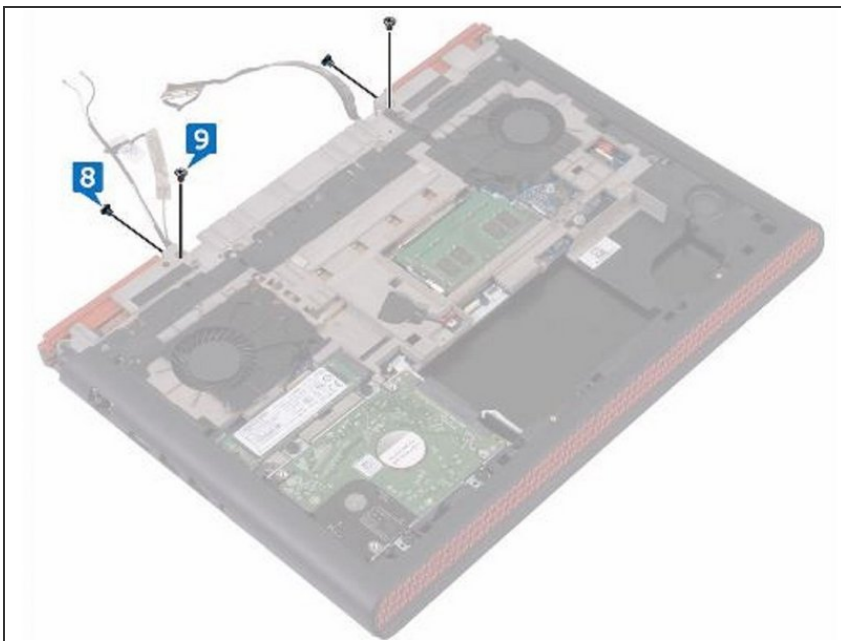
- Peel off the display cable from the computer base.

Step 7 — Remove the Screws



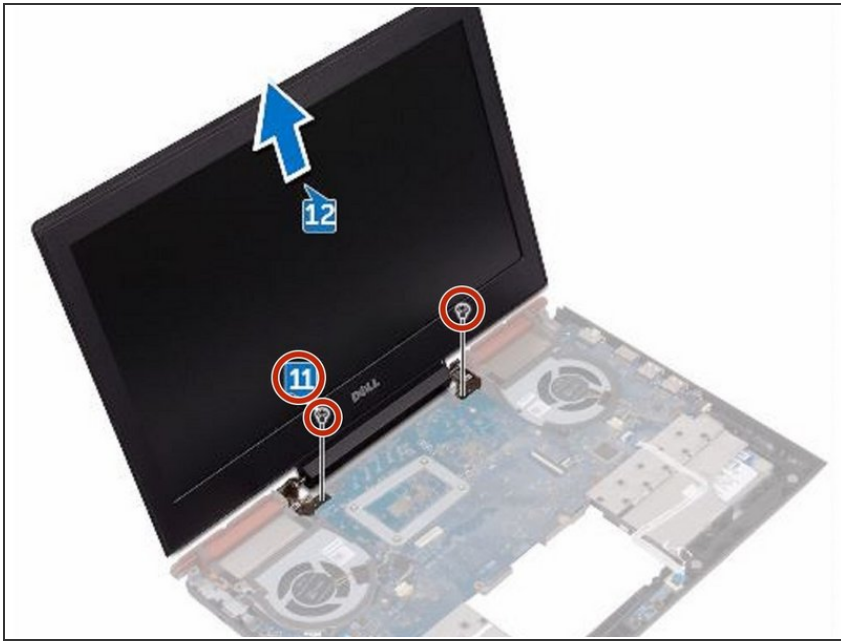
- Remove the two screws (M2x3) that secure the display assembly to the computer base.

Step 8 — Remove the Screws



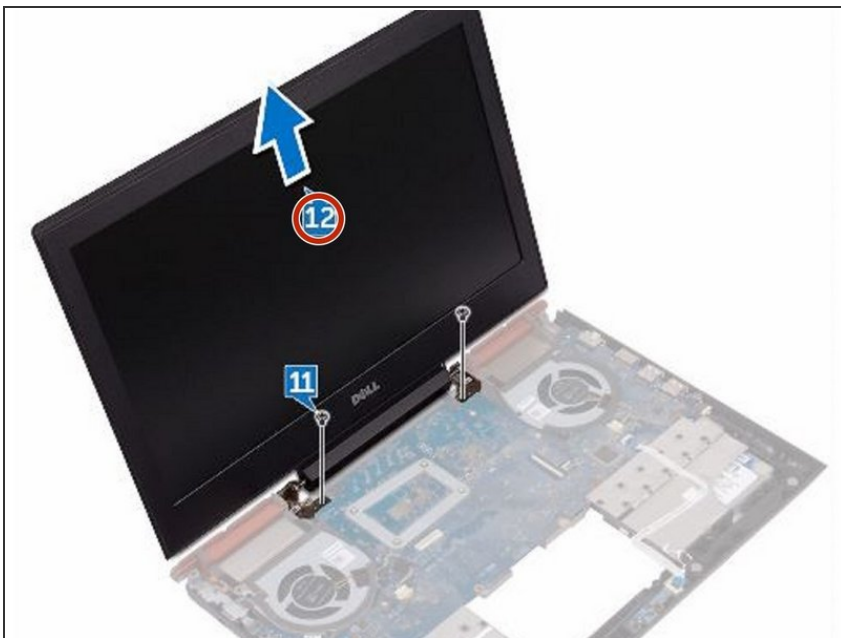
- Remove the two screws (M2.5x5) that secure the display assembly to the computer base.

Step 9 — Remove the Screws



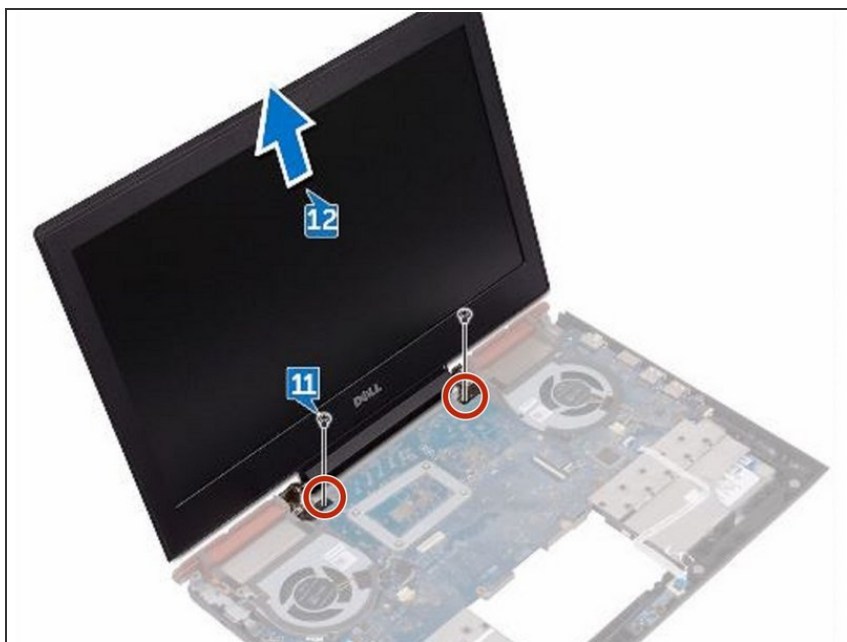
- Turn the computer over and open the display.
- Remove the two screws (M2.5x5) that secure the display assembly to the computer base.

Step 10 — Lift the Display Assembly



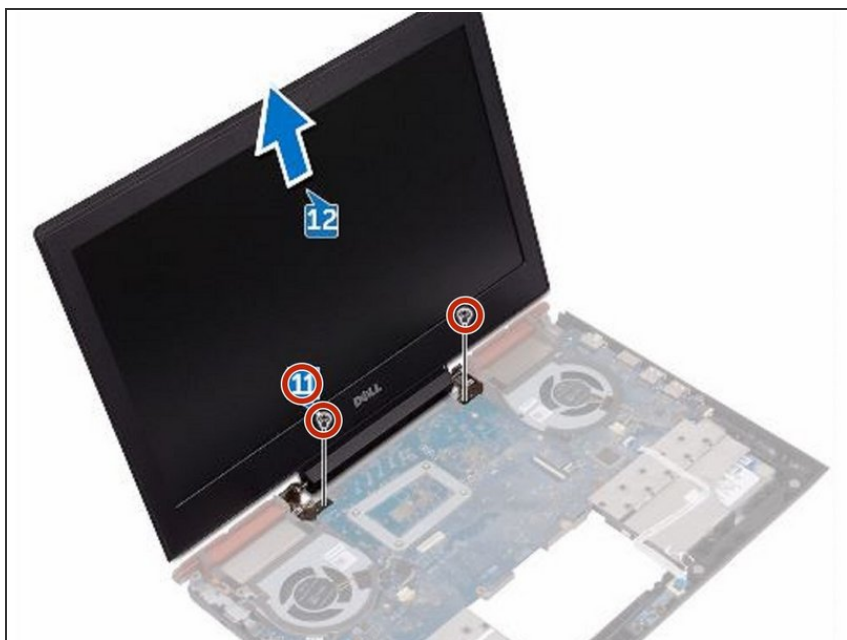
- Lift the display assembly off the computer base.

Step 11 — Align the Screw Hole



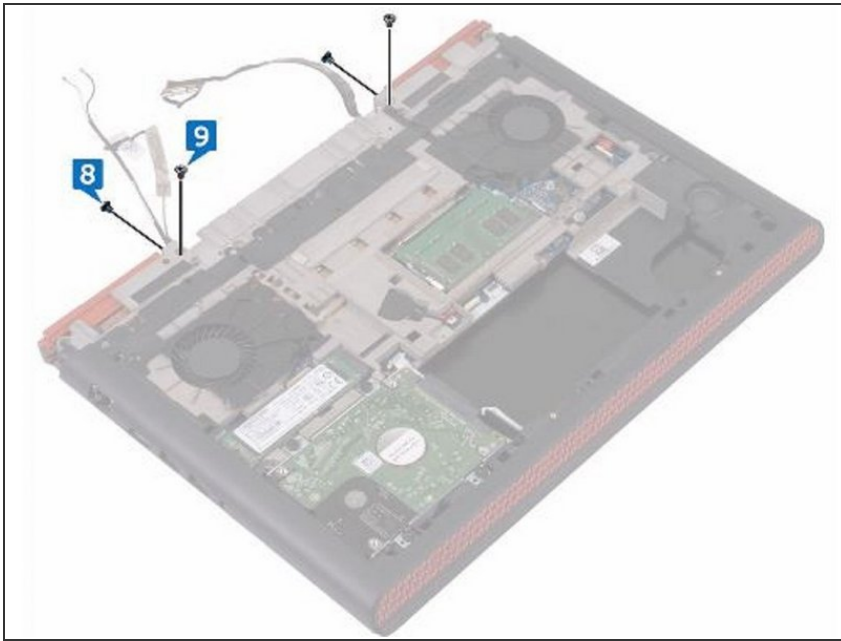
- Align the screw holes on the **NEW** display assembly with the screw holes on the computer base.

Step 12 — Replace the Screws



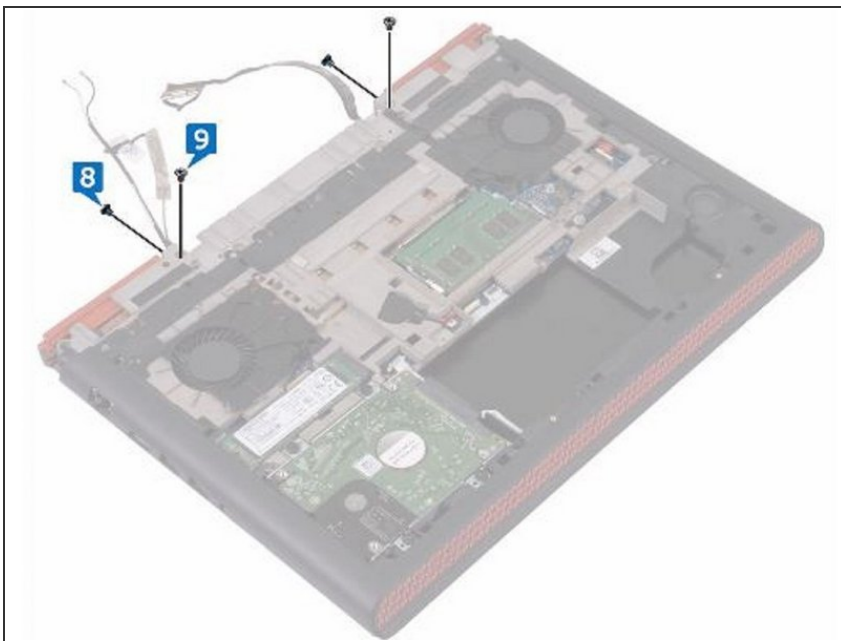
- Replace the two screws (M2.5x5) that secure the display assembly to the computer base.

Step 13 — Replace the Screws



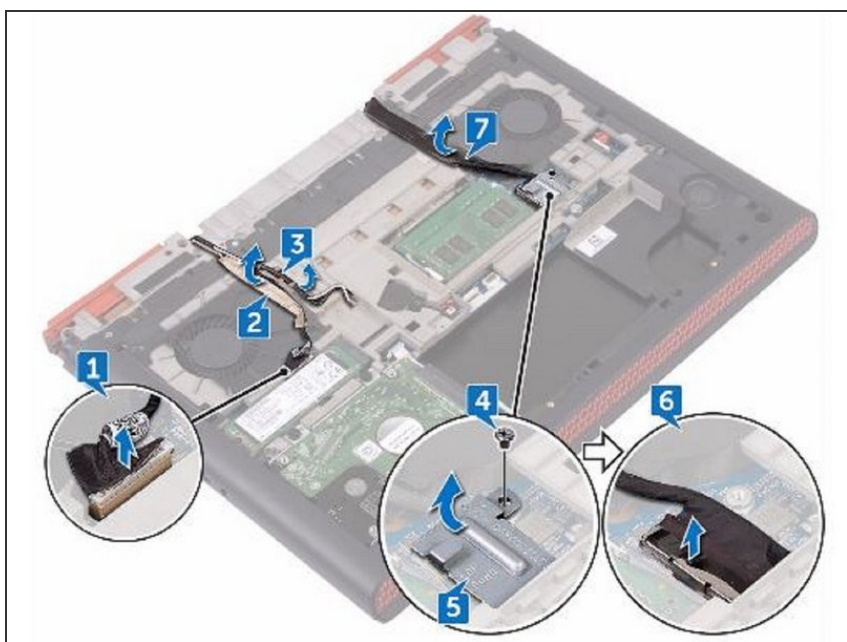
- Close the display and turn the computer over.
- Replace the two screws (M2.5x5) that secure the display assembly to the computer base.

Step 14 — Replace the Screws



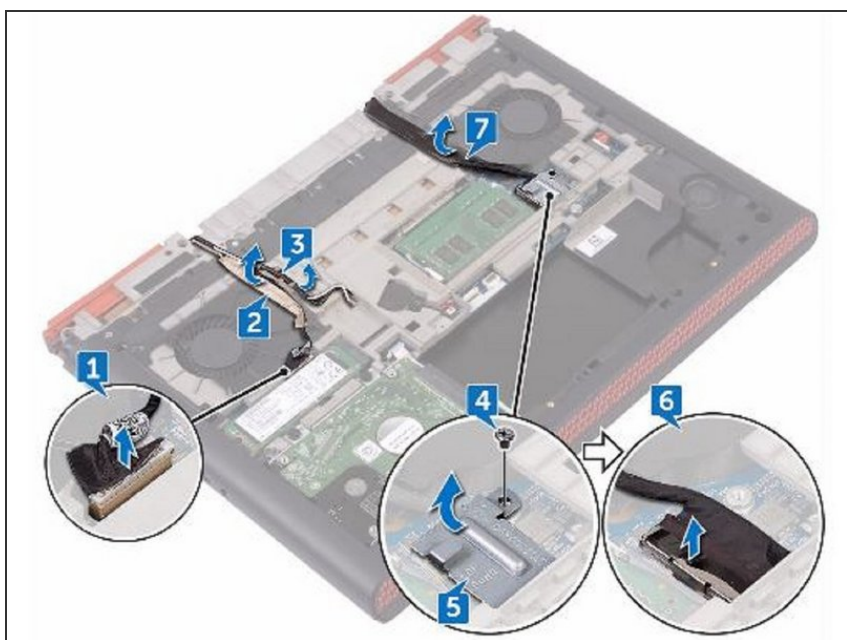
- Replace the two screws (M2x3) that secure the display assembly to the computer base.

Step 15 — Adhere the Cable



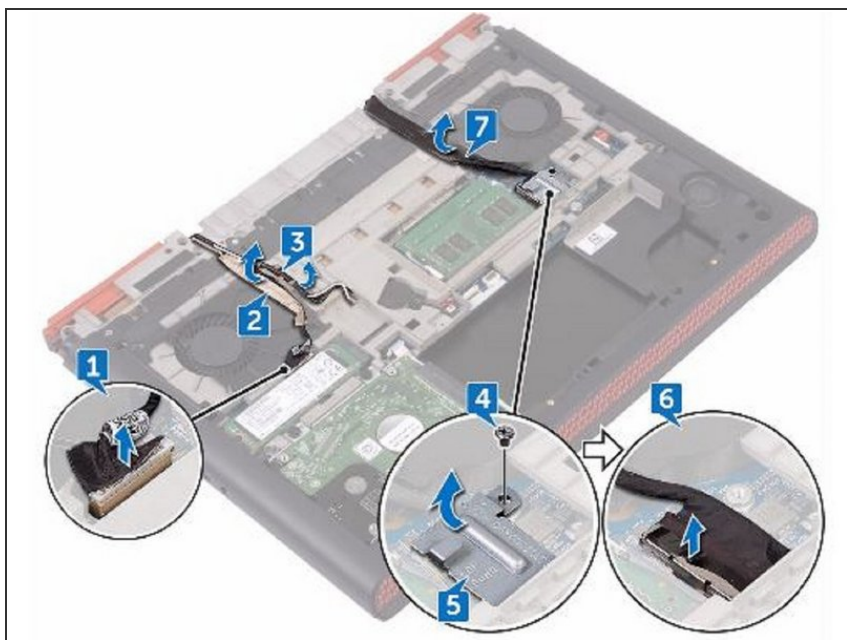
- Adhere the display cable and the camera cable to the computer base.

Step 16 — Route the Cables



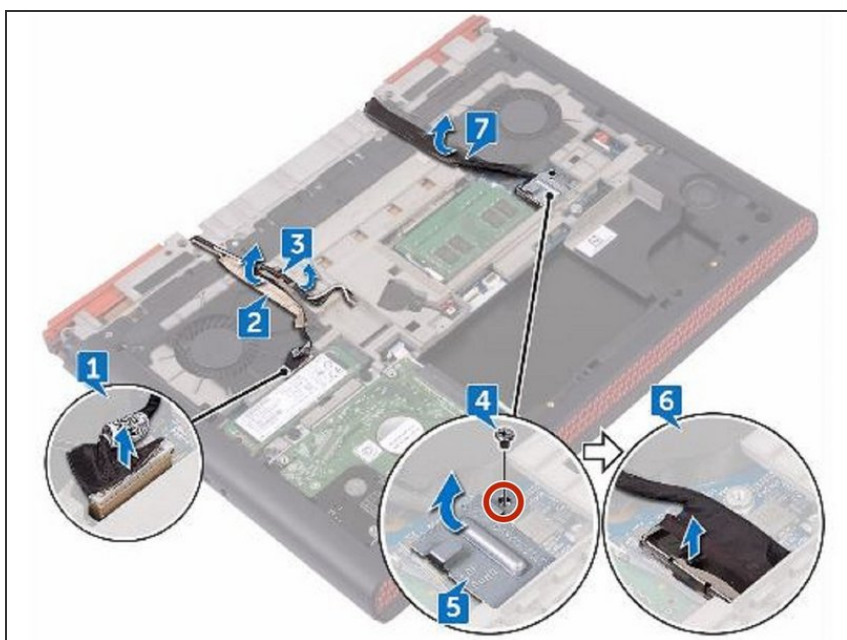
- Route the antenna cables through the routing guides on the computer base.

Step 17 — Connect the Cable



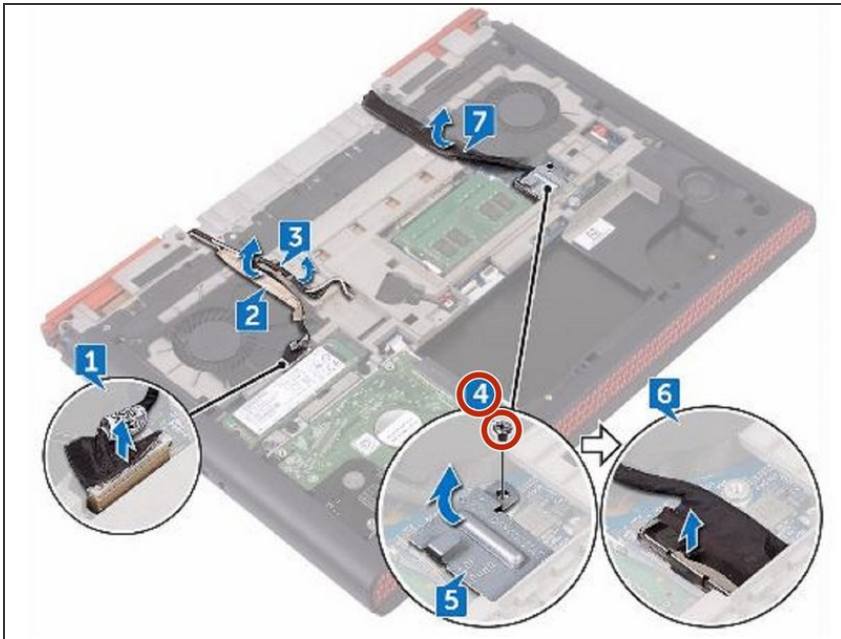
- Connect the display cable and camera cable to the system board.

Step 18 — Align the Screw Hole



- Align the screw hole on the display-cable bracket with the screw hole on the system board.

Step 19 — Replace the Screw



- Replace the screw (M2x3) that secures the display cable bracket to the system board.