



# Dell Inspiron 14 N4050 Hard Drive Replacement

Written By: Terrence15



---

## INTRODUCTION

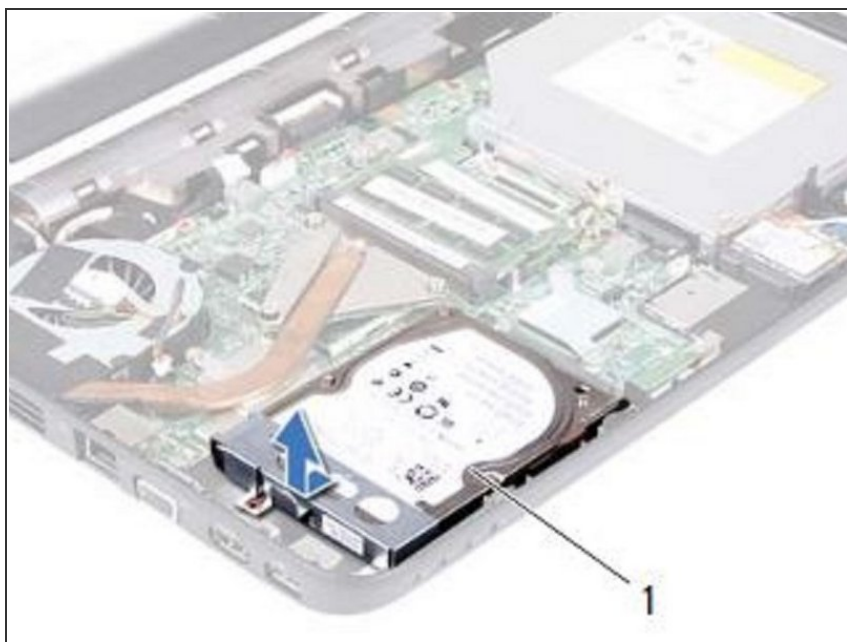
In this guide, we will be showing you how to remove and replace the Hard Drive.



### TOOLS:

- [Phillips #0 Screwdriver](#) (1)
-

## Step 1 — Sliding the Hard-Drive Assembly

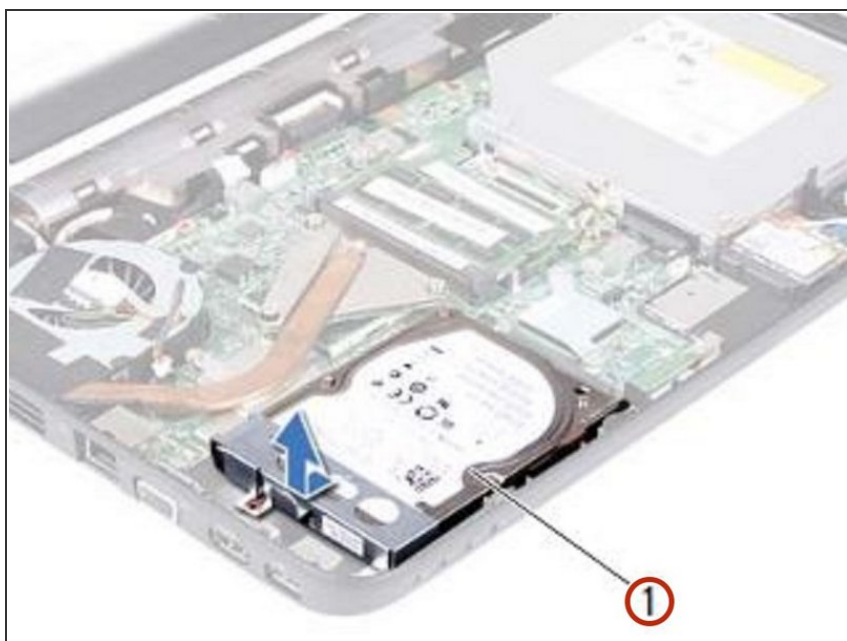


**⚠ WARNING:** Before working inside your computer, read the safety information that shipped with your computer. Follow the instructions in ["Before You Begin"](#).

**⚠ CAUTION:** To avoid electrostatic discharge, ground yourself by using a wrist grounding strap or by periodically touching an unpainted metal surface (such as a connector on your computer).

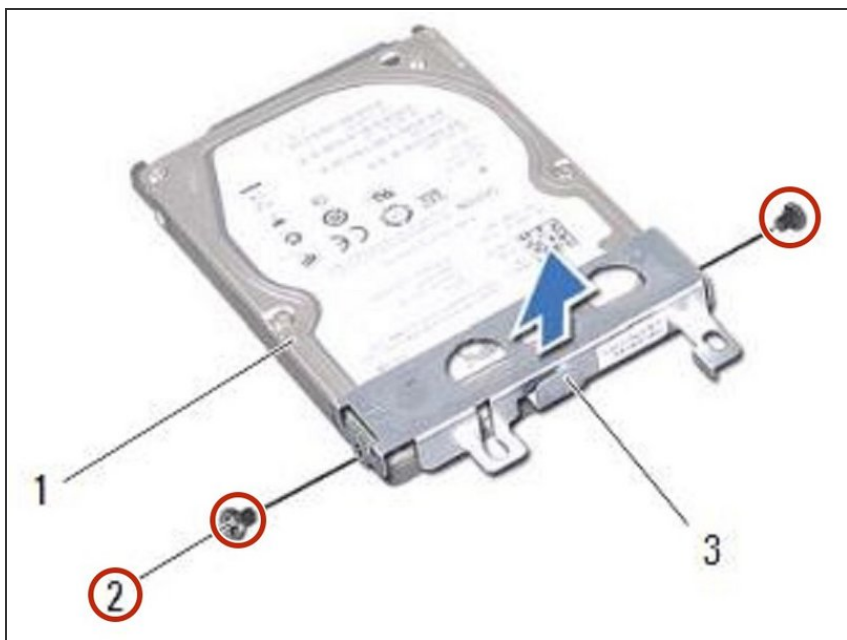
- Slide the hard-drive assembly to the left to disconnect it from the connector on the system board.

## Step 2 — Lifting the Hard-Drive Assembly



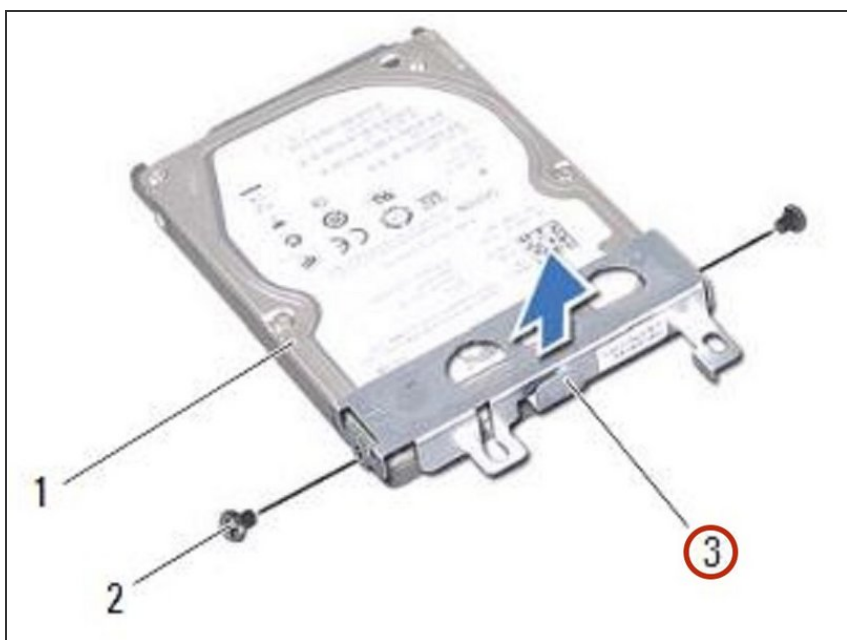
- Lift the hard-drive assembly out of the computer base.

### Step 3 — Remove the Screws



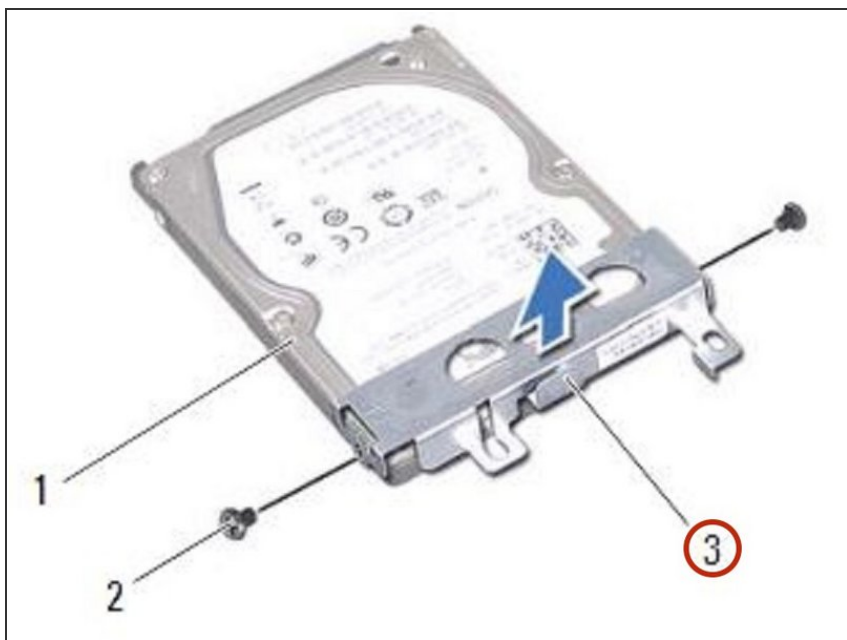
- Remove the two screws that secure the hard-drive bracket to the hard drive.

### Step 4 — Lifting the Hard-Drive Bracket



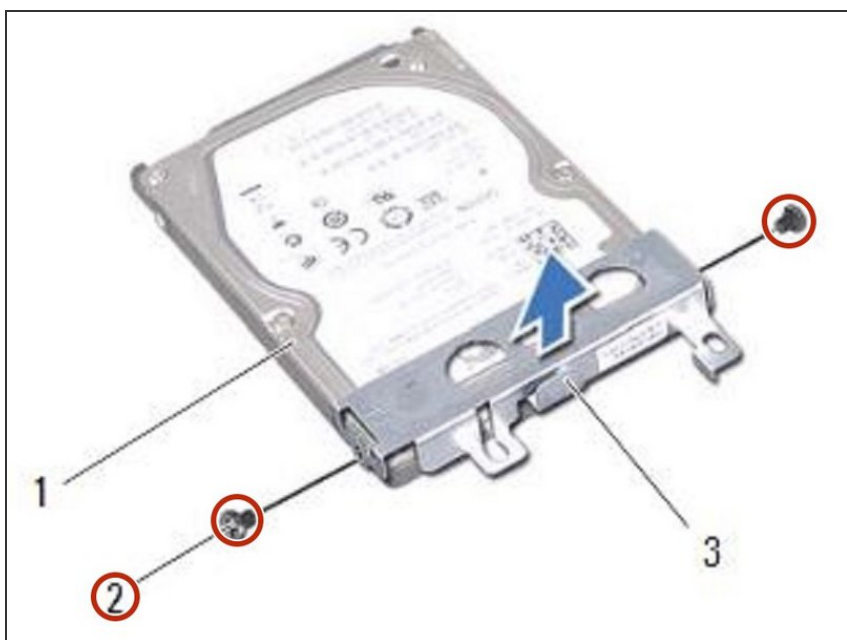
- Lift the hard-drive bracket away from the hard drive.

## Step 5 — Placing the Hard-Drive Bracket



- Place the hard-drive bracket on the **NEW** hard drive.

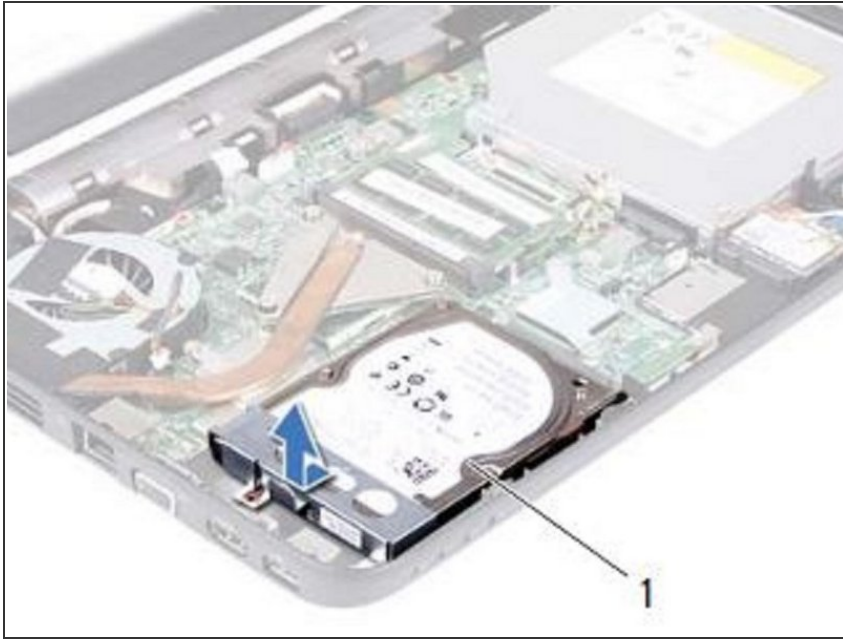
## Step 6 — Replace the Screws



- Replace the two screws that secure the hard-drive bracket to the hard drive.

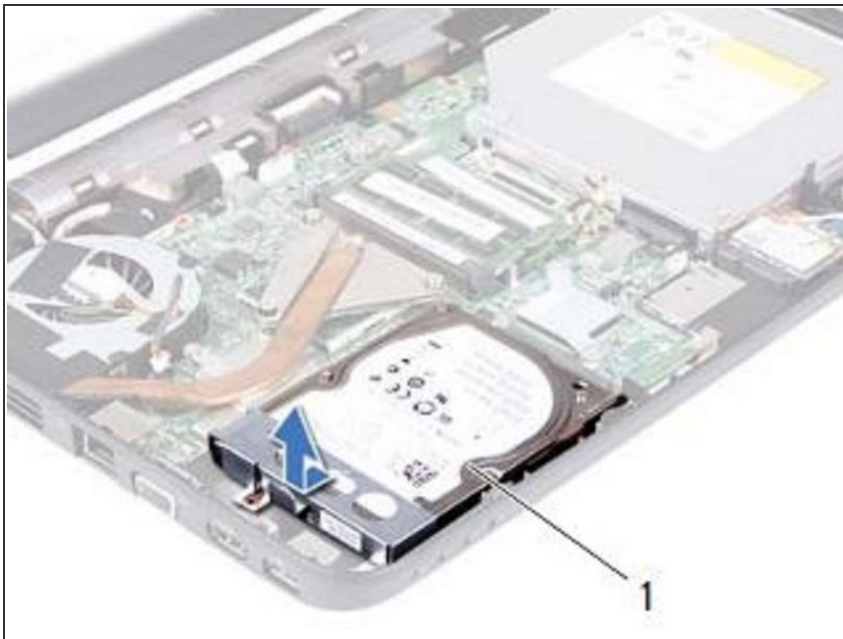


## Step 7 — Placing the Hard-Drive Assembly



- Place the hard-drive assembly on the computer base.

## Step 8 — Push the Hard Drive Assembly



- Push the hard-drive assembly towards the right to connect it to the connector on the system board.