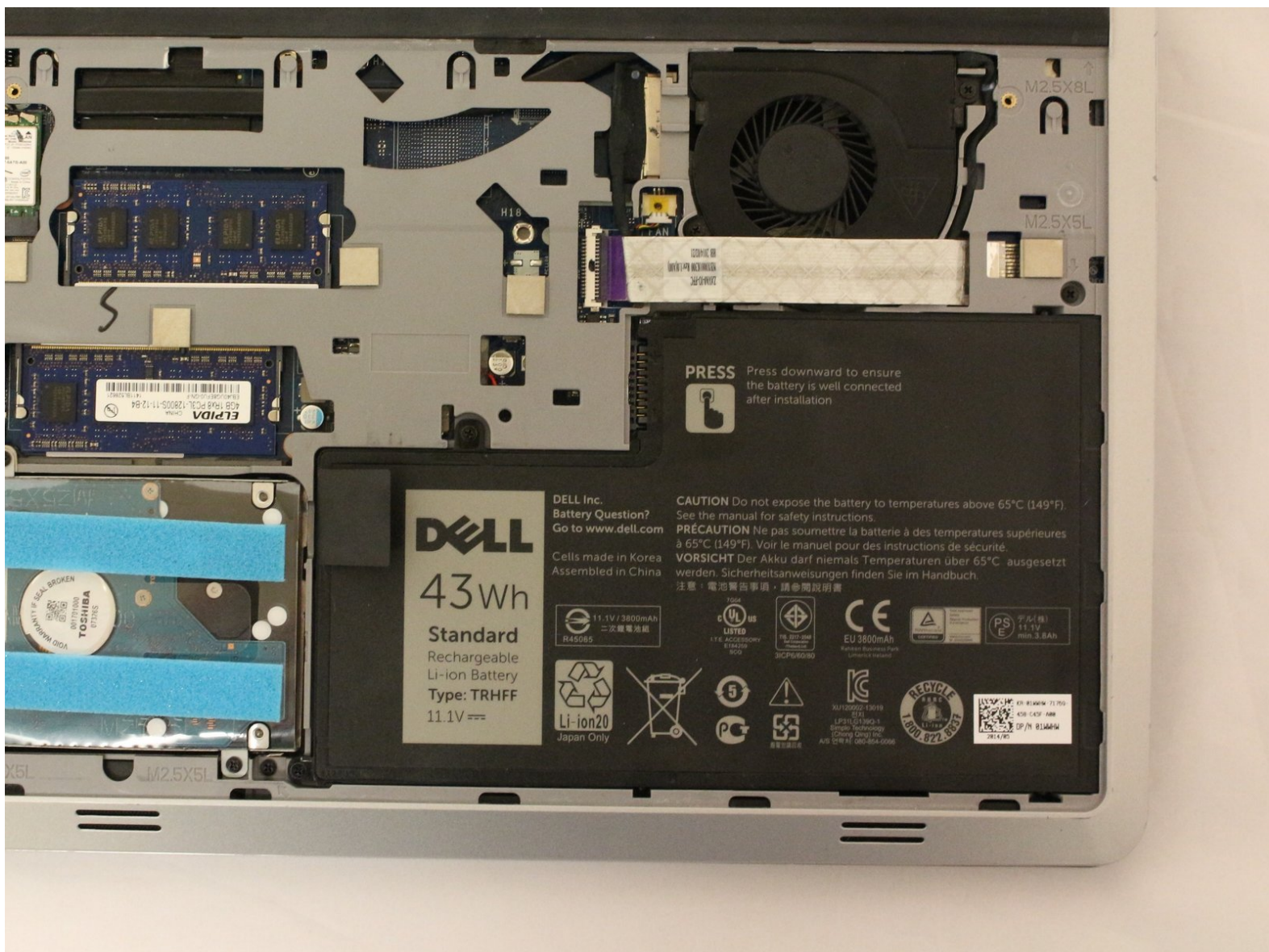




# Dell Inspiron 14-5447 Battery Replacement

Replacing a faulty battery for the Dell Inspiron 14-5447.

Written By: Isabella Chavez



## INTRODUCTION

This guide will walk you through the steps to replace a faulty battery for the Dell Inspiron 14-5447. Make sure that the device is not plugged in before trying to replace the battery. If the laptop wont turn on, it's safe to say that removing the battery shouldn't result in any damage.



### TOOLS:

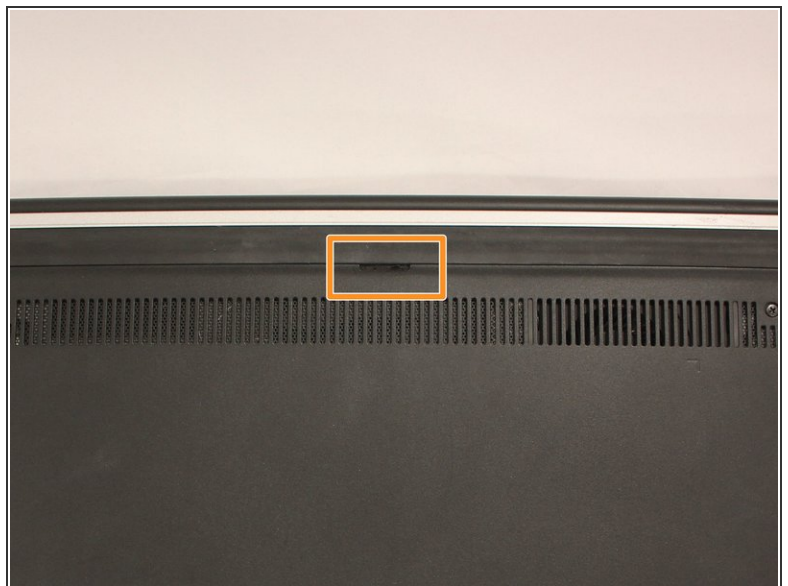
- [Spudger](#) (1)
  - [Phillips #0 Screwdriver](#) (1)
  - [iFixit Opening Tools](#) (1)
  - [Tweezers](#) (1)
-

## Step 1 — Battery



- Flip the laptop upside down to access the battery.

## Step 2

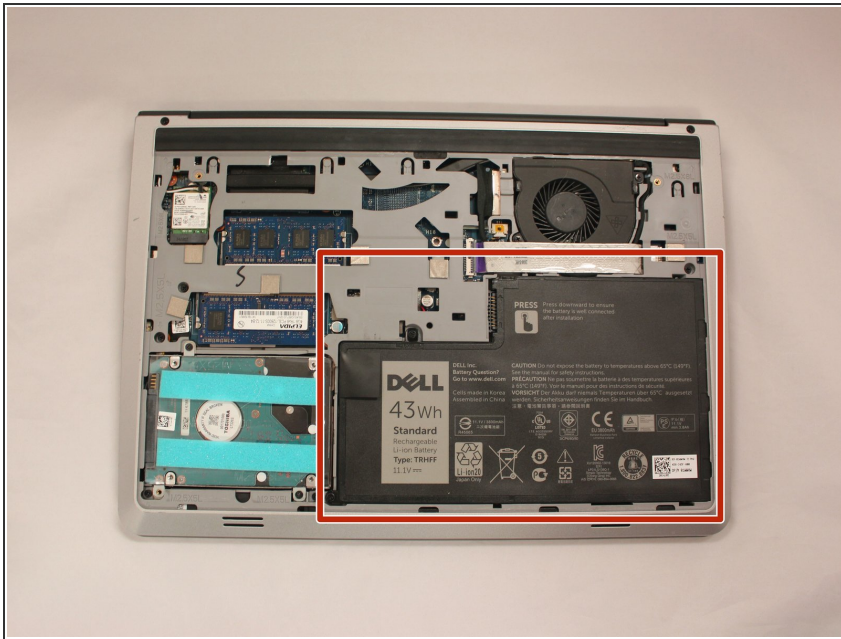


- Remove the two black 5.70mm Phillips#0 screws on the case's back.
- Locate the small slit, centered between the removed screws, which will help open and remove the back cover.
- Insert a plastic opening tool into the small slit and pry up the back cover.

This document was generated on 2019-09-18 12:46:14 AM (MST).

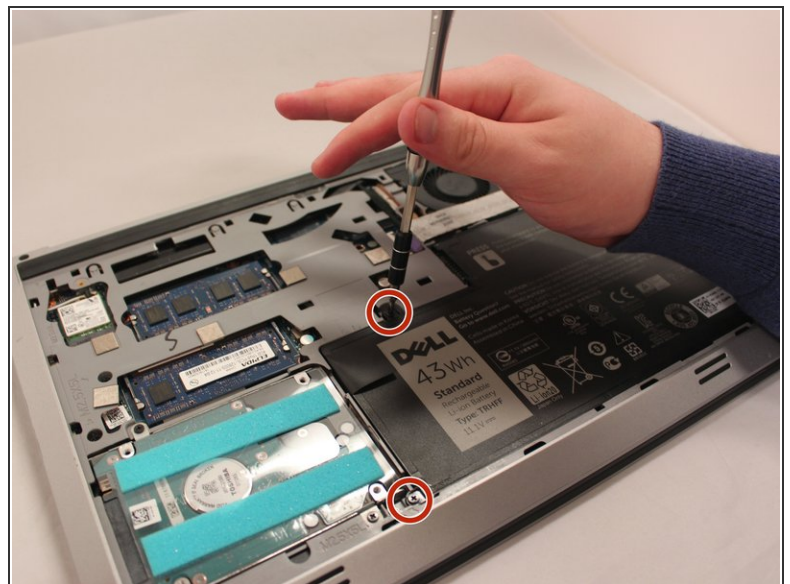
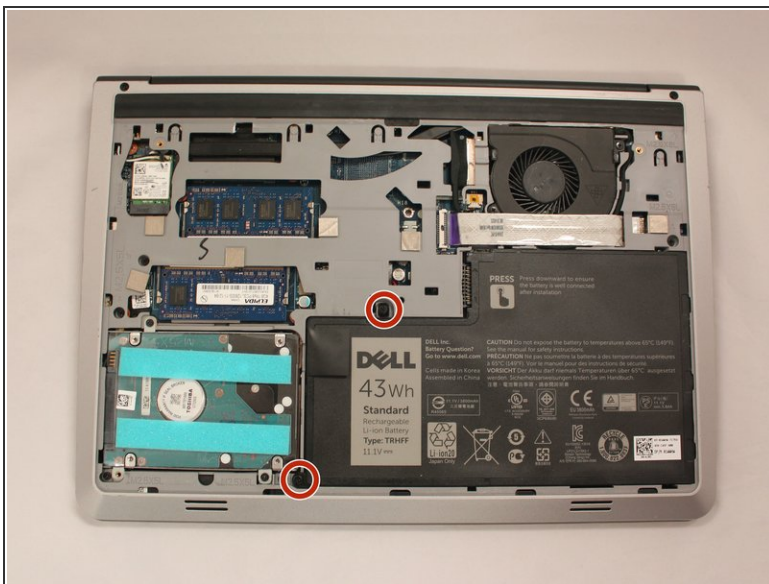


## Step 3



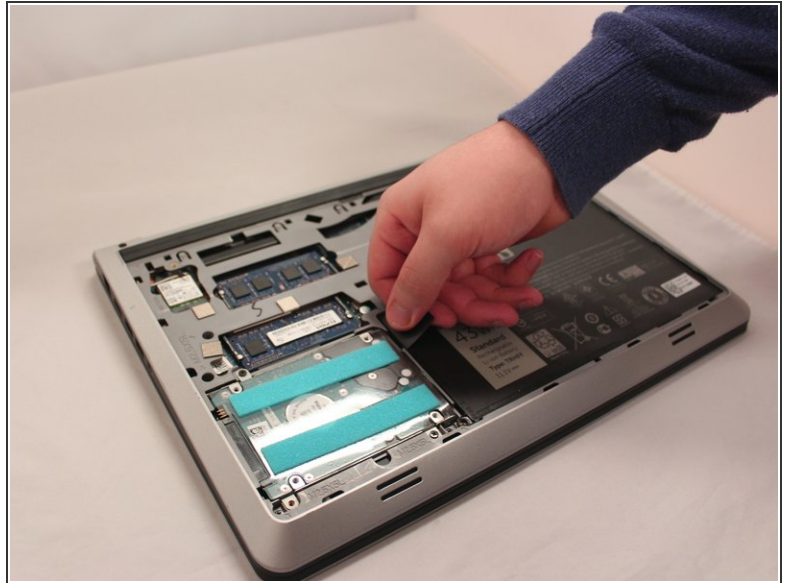
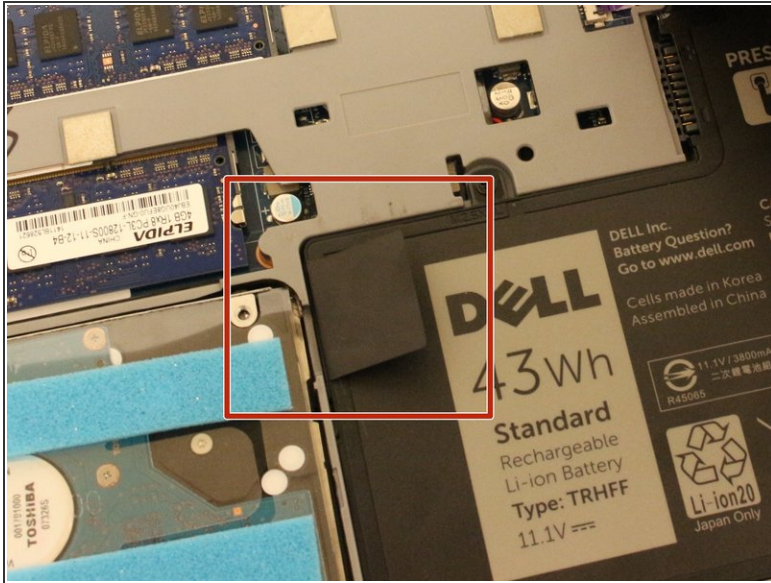
- Locate the battery. It is a large black plastic object that has a grey square with the words "DELL" on it.
- ⚠ Treat the battery with care - puncturing or bending may cause damage to the battery and may result as a fire or injury.

## Step 4



- Remove the two 5.70mm Phillips #0 screws on the left side that secure the battery in place.

## Step 5



- Use the black plastic flap on the left side to pull the battery out.
- Slowly lift the flap up with the battery and it should slide out smoothly.

To reassemble your device, follow these instructions in reverse order.