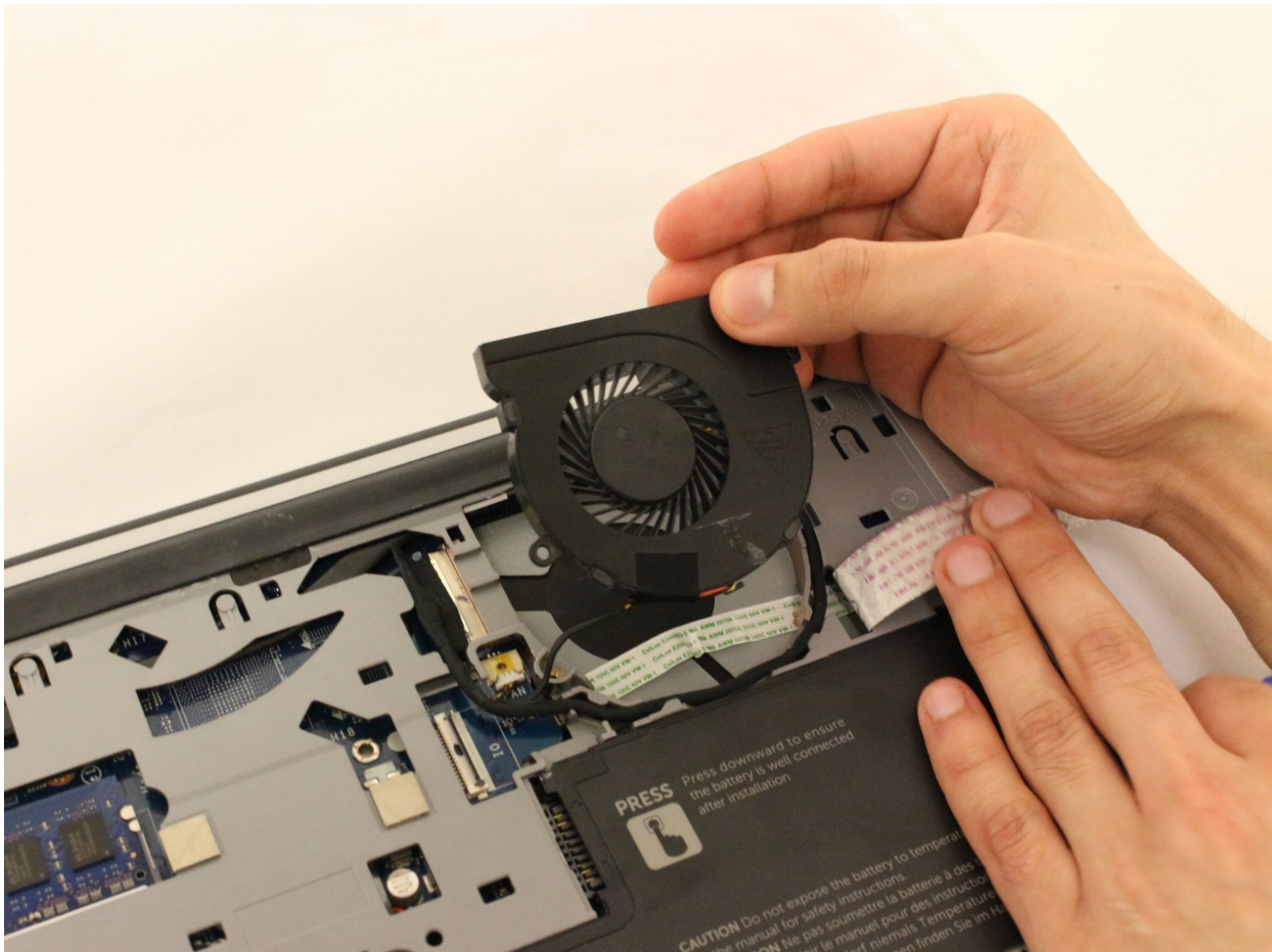




Dell Inspiron 14-5447 Fan Replacement

Replacing a faulty fan for the Dell Inspiron 14-5447.

Written By: Isabella Chavez



INTRODUCTION

This guide will teach users how to replace a faulty fan for the Dell Inspiron 14-5447. With removal of the fan, cleaning any debris left behind will help your new fan run much quieter and have better cooling circulation.

TOOLS:

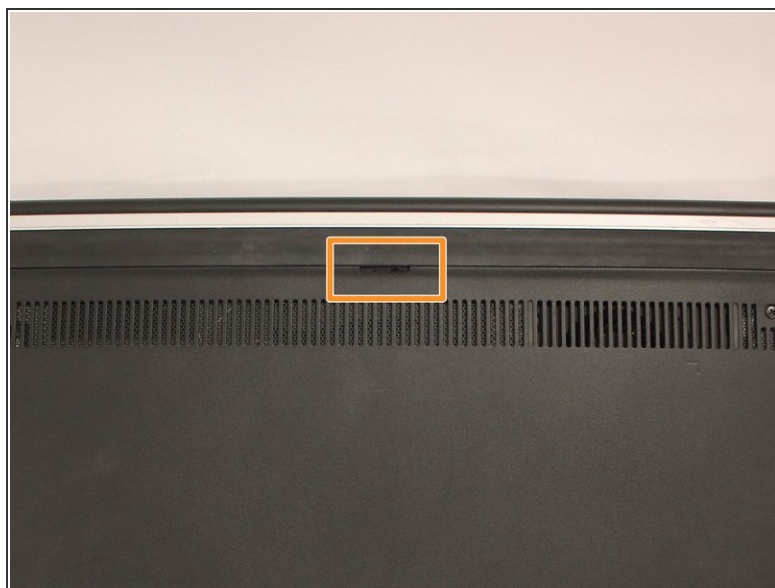
- [Phillips #0 Screwdriver](#) (1)
 - [iFixit Opening Tools](#) (1)
 - [Spudger](#) (1)
 - [Tweezers](#) (1)
-

Step 1 — Battery



- Flip the laptop upside down to access the battery.

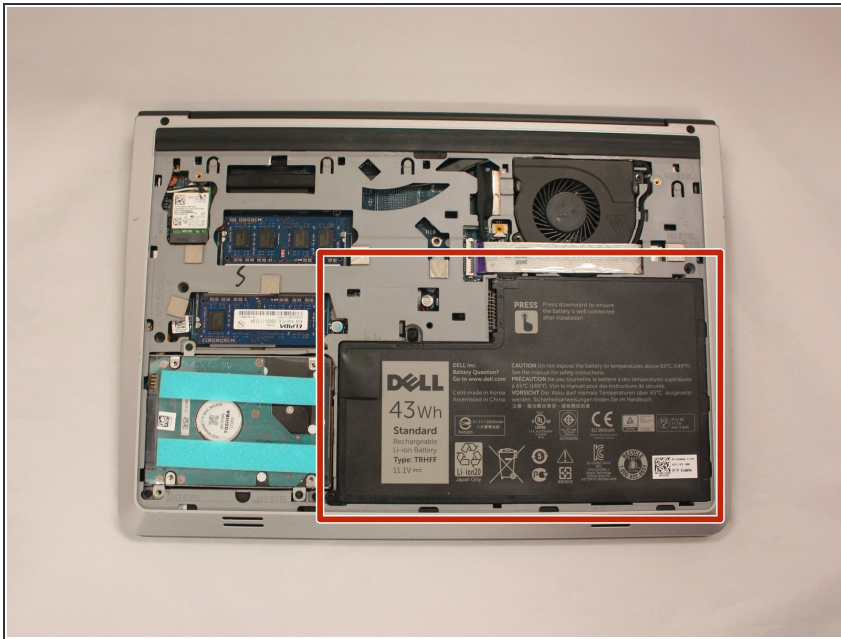
Step 2



- Remove the two black 5.70mm Phillips#0 screws on the case's back.
- Locate the small slit, centered between the removed screws, which will help open and remove the back cover.
- Insert a plastic opening tool into the small slit and pry up the back cover.

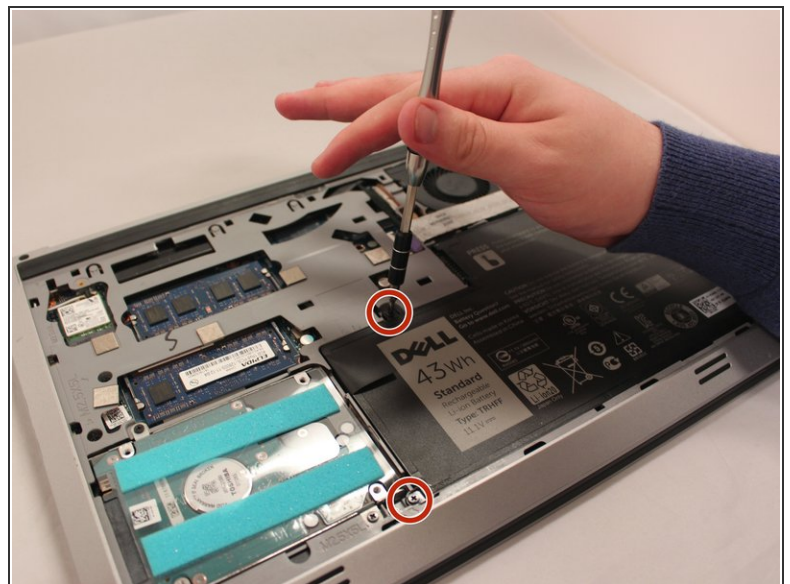
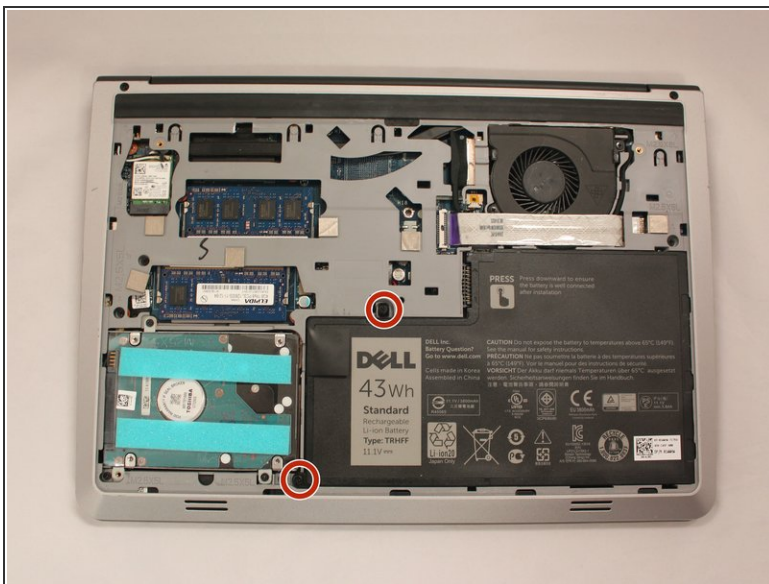
This document was generated on 2019-10-25 08:39:27 PM (MST).

Step 3



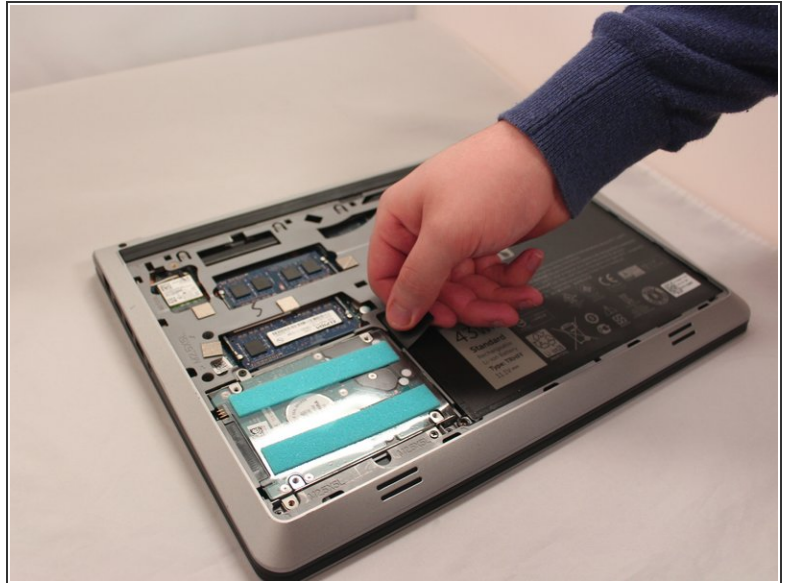
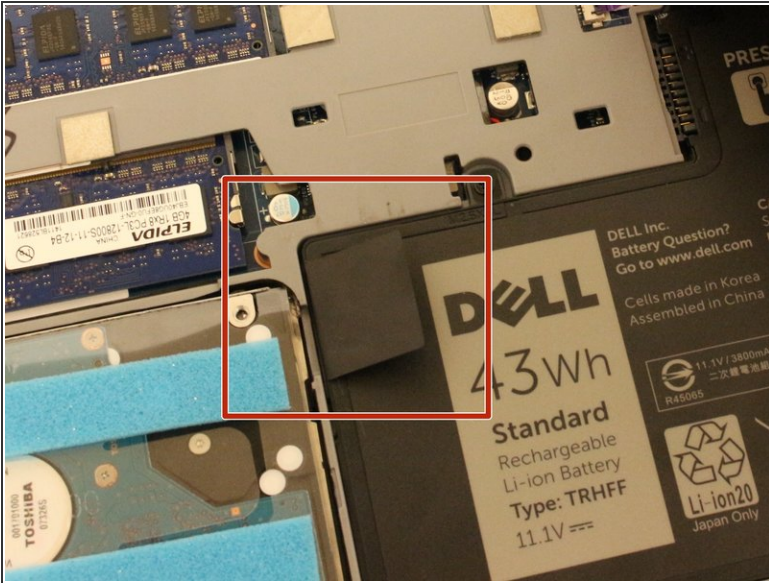
- Locate the battery. It is a large black plastic object that has a grey square with the words "DELL" on it.
- ⚠ Treat the battery with care - puncturing or bending may cause damage to the battery and may result as a fire or injury.

Step 4



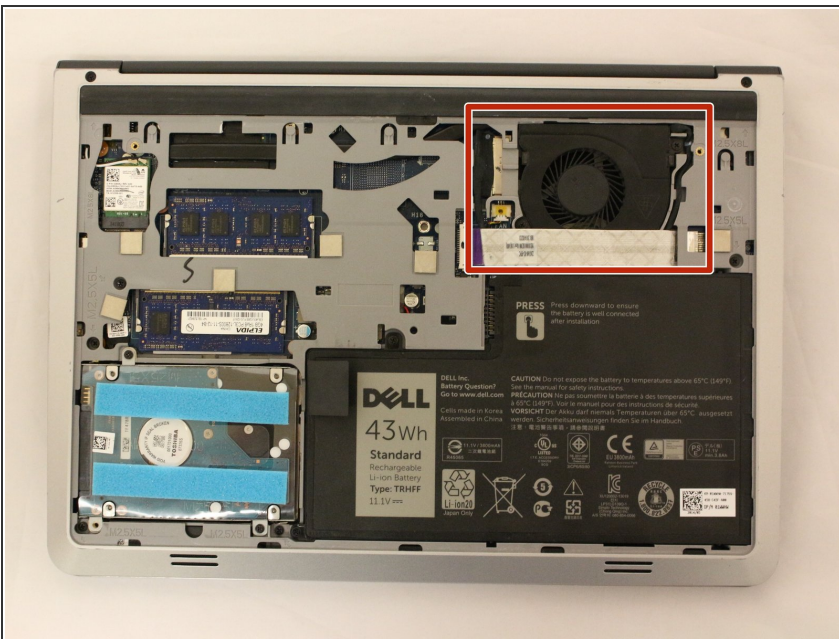
- Remove the two 5.70mm Phillips #0 screws on the left side that secure the battery in place.

Step 5



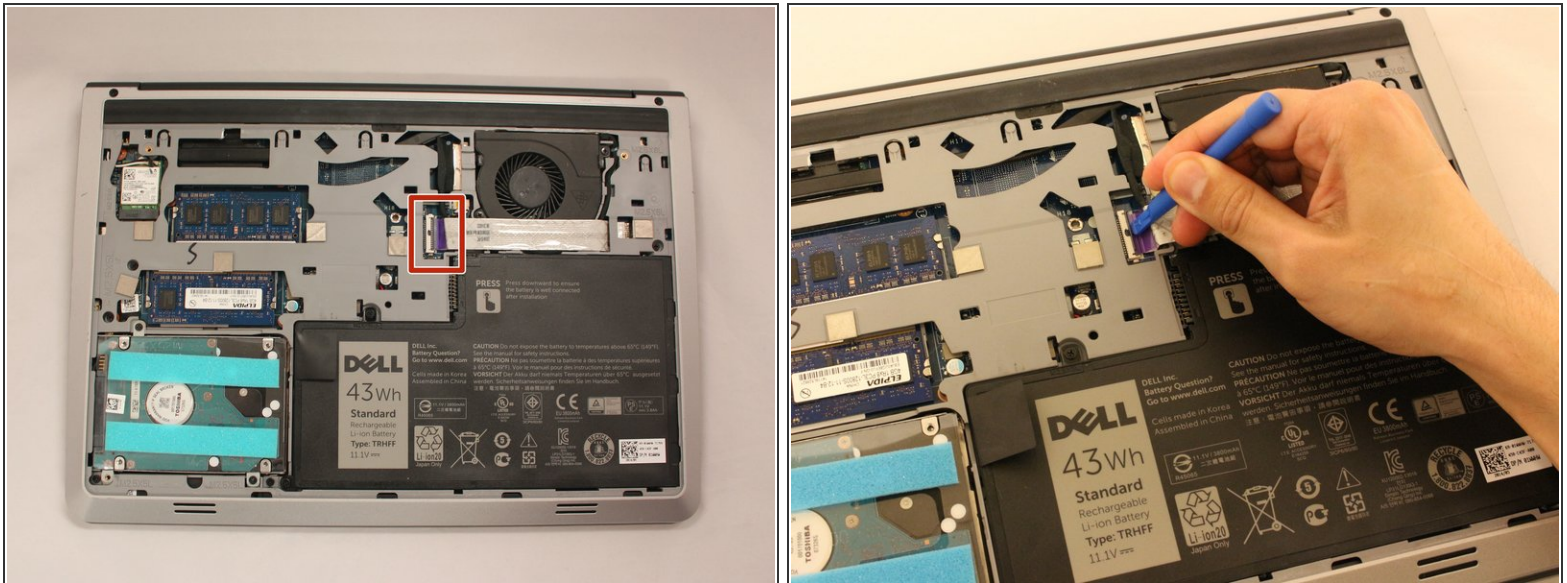
- Use the black plastic flap on the left side to pull the battery out.
- Slowly lift the flap up with the battery and it should slide out smoothly.

Step 6 — Fan



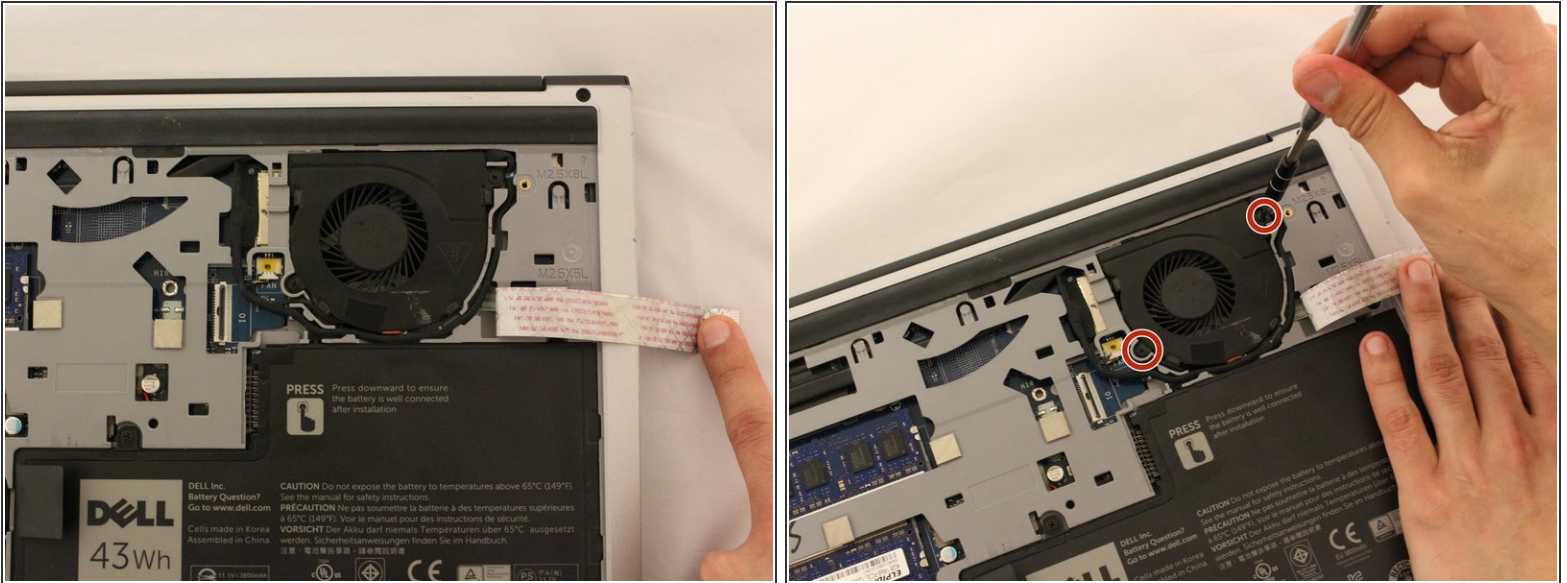
- Locate the fan system in the top right corner.

Step 7



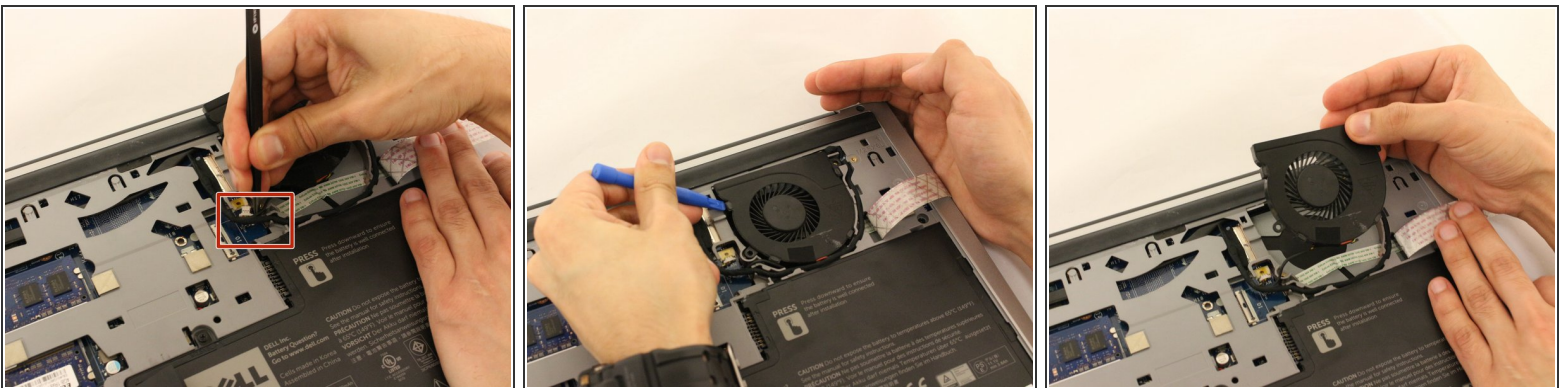
- Locate the wide white cable line until to see the securing flap insert.
- Remove the thick white cable crossing over the fan by using the spudger to flip the securing flap holding down the cable.

Step 8



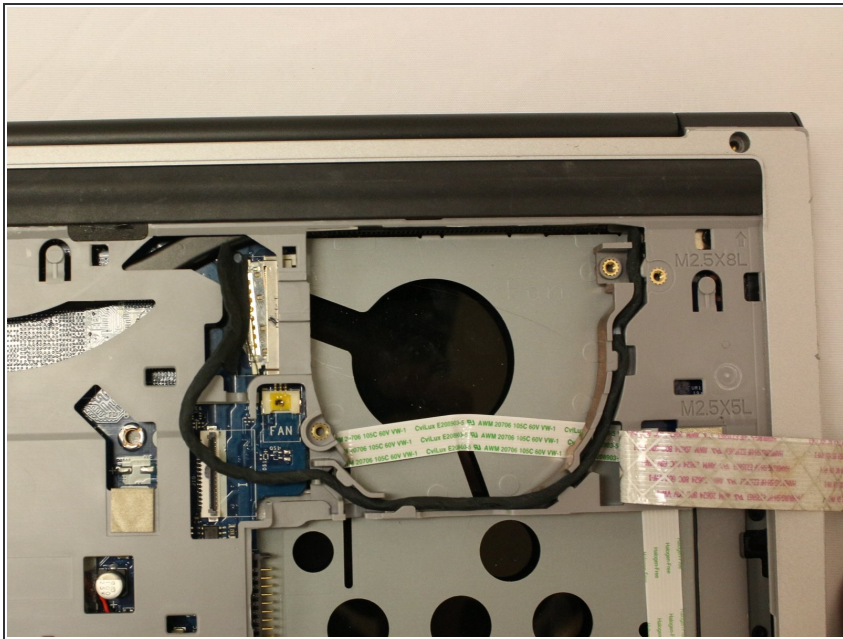
- Move the cable over to the side to reveal the fan screws.
- Locate and remove the two black (5.70mm) screws from the fan.

Step 9



- Use tweezers to remove the small cable attached to the fan.
- Using the blue spudger, pry the fan out of its place.
- Remove the fan slowly to prevent damage to any wires or cables connected to the device.

Step 10



- Carefully remove the fan. Once the fan is removed, cleaning may be necessary to prevent overheating.

To reassemble your device, follow these instructions in reverse order.