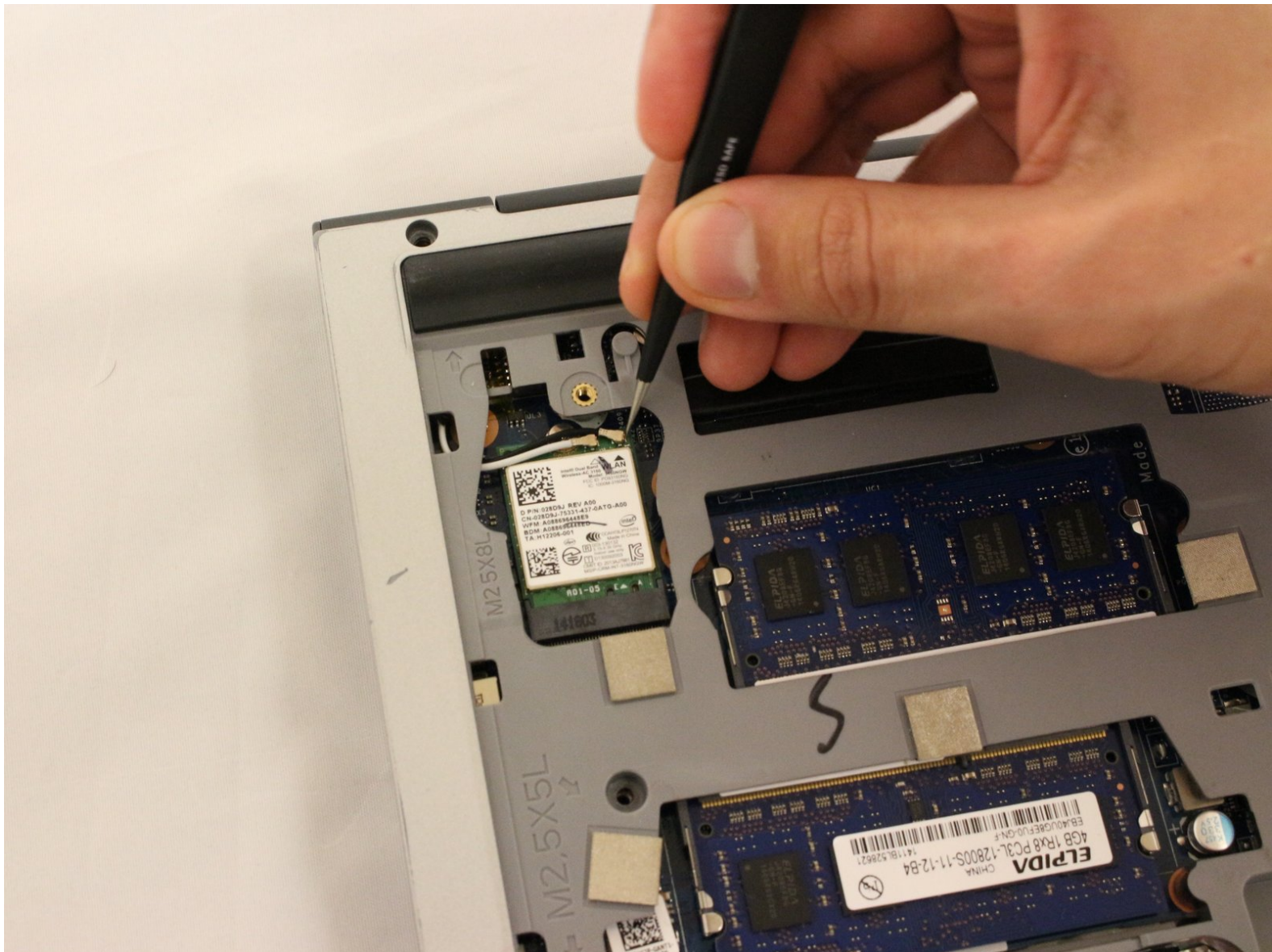




# Dell Inspiron 14-5447 Wifi Card Replacement

Replacing a faulty Wi-Fi card for the Dell Inspiron 14-5447.

Written By: Isabella Chavez



## INTRODUCTION

This guide will cover the steps needed to repair a faulty wifi card for the Dell Inspiron 14-5447 laptop. Make sure that prior to starting this guide, the device is not plugged into any power source and it is turned off.



### TOOLS:

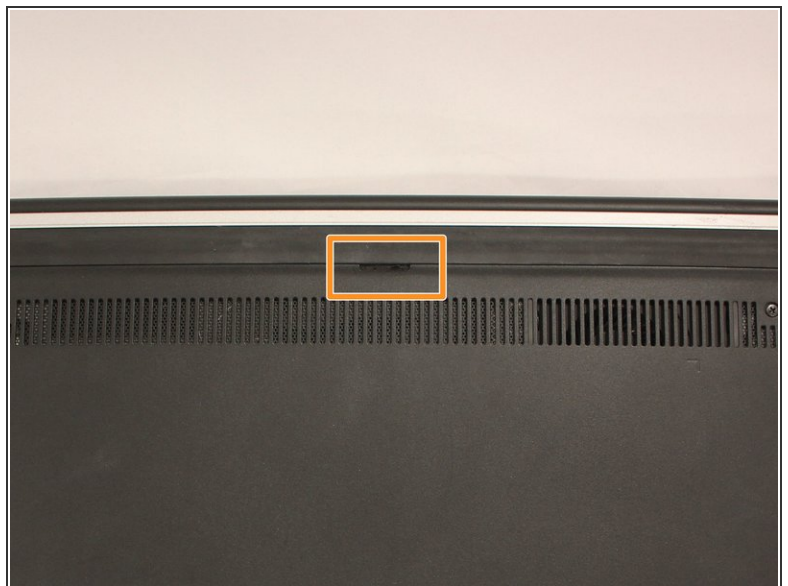
- [Phillips #0 Screwdriver](#) (1)
  - [Phillips #1 Screwdriver](#) (1)
  - [iFixit Opening Tools](#) (1)
  - [Spudger](#) (1)
  - [Tweezers](#) (1)
-

## Step 1 — Battery



- Flip the laptop upside down to access the battery.

## Step 2

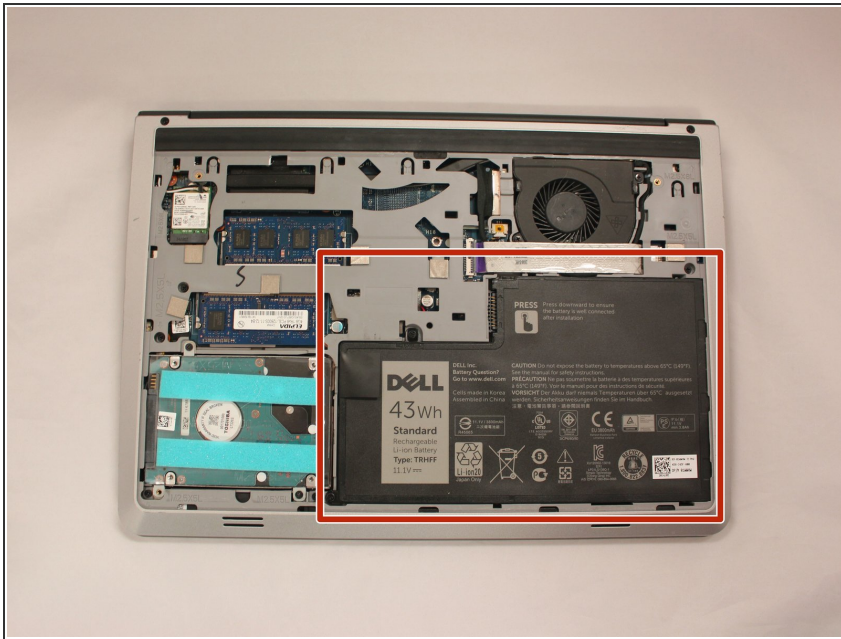


- Remove the two black 5.70mm Phillips#0 screws on the case's back.
- Locate the small slit, centered between the removed screws, which will help open and remove the back cover.
- Insert a plastic opening tool into the small slit and pry up the back cover.

This document was generated on 2019-09-22 04:33:48 PM (MST).

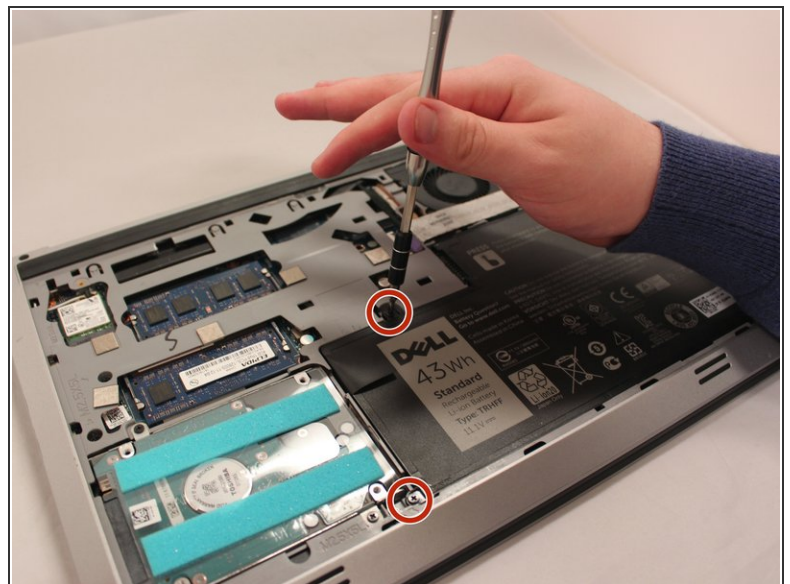
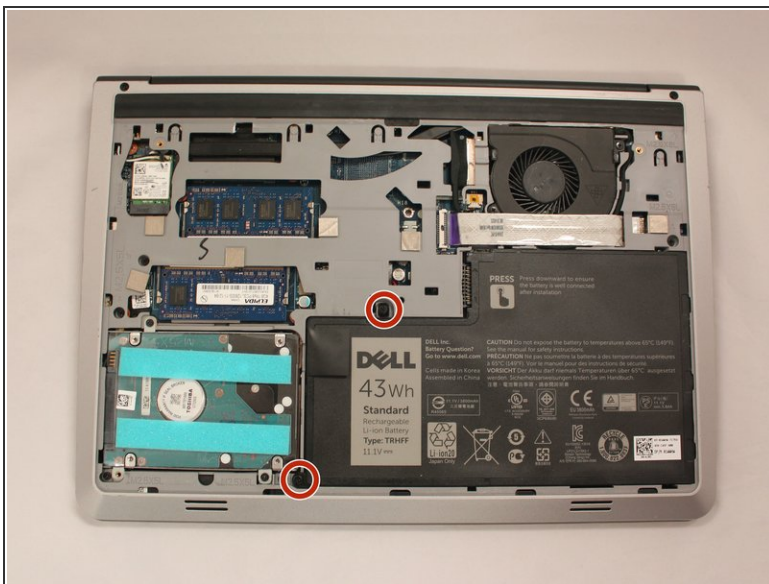


## Step 3



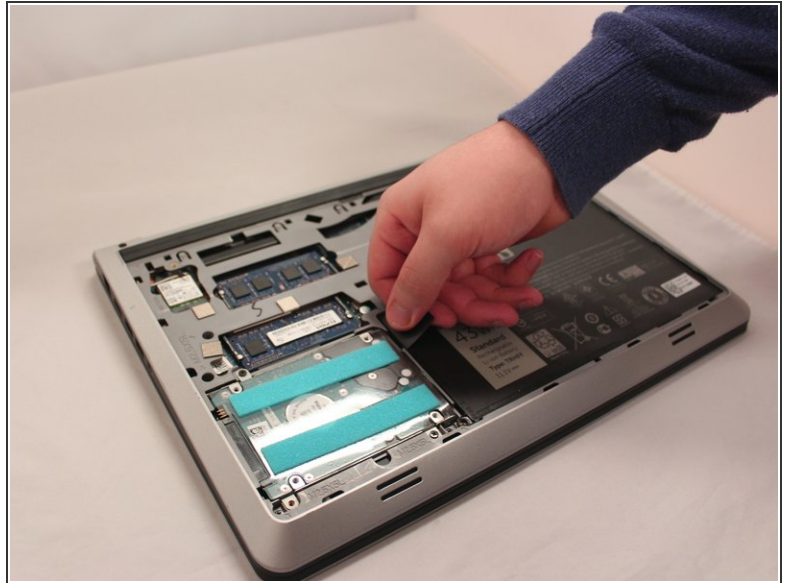
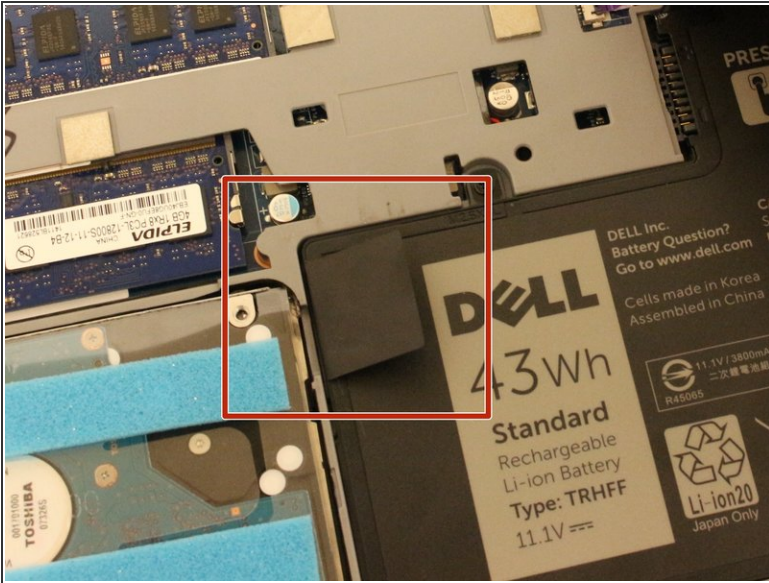
- Locate the battery. It is a large black plastic object that has a grey square with the words "DELL" on it.
- ⚠ Treat the battery with care - puncturing or bending may cause damage to the battery and may result as a fire or injury.

## Step 4



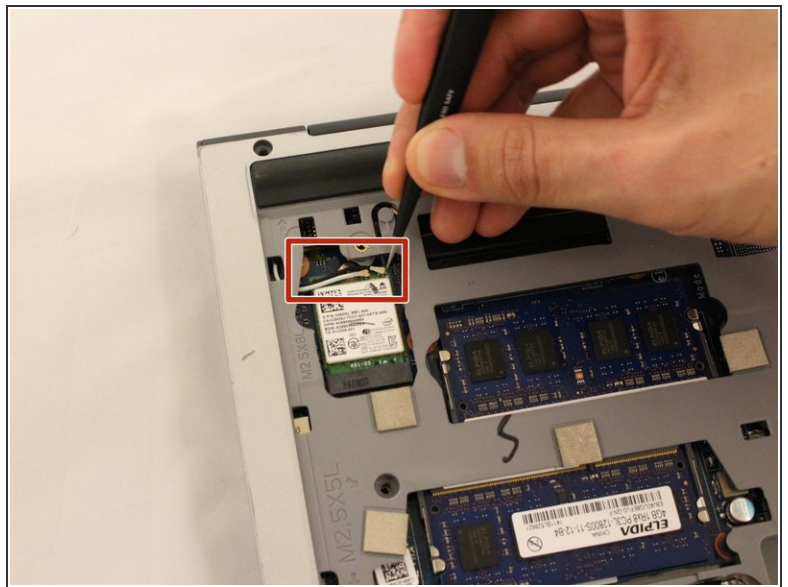
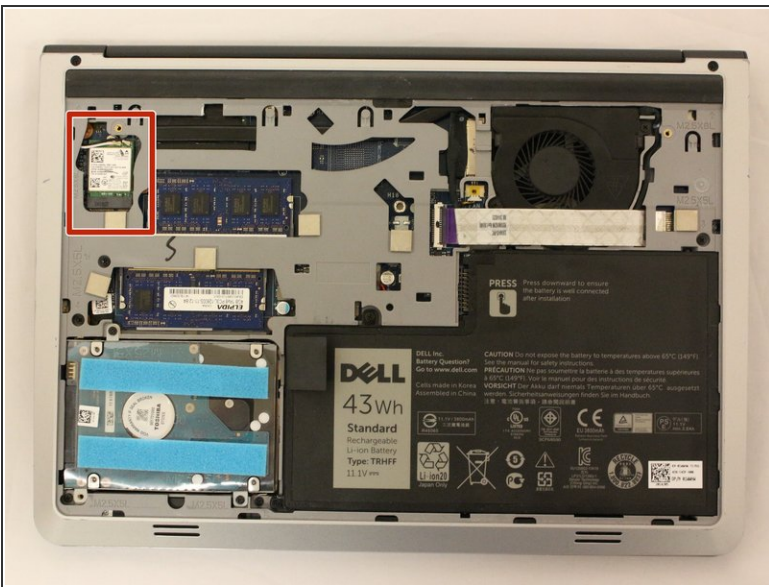
- Remove the two 5.70mm Phillips #0 screws on the left side that secure the battery in place.

## Step 5



- Use the black plastic flap on the left side to pull the battery out.
- Slowly lift the flap up with the battery and it should slide out smoothly.

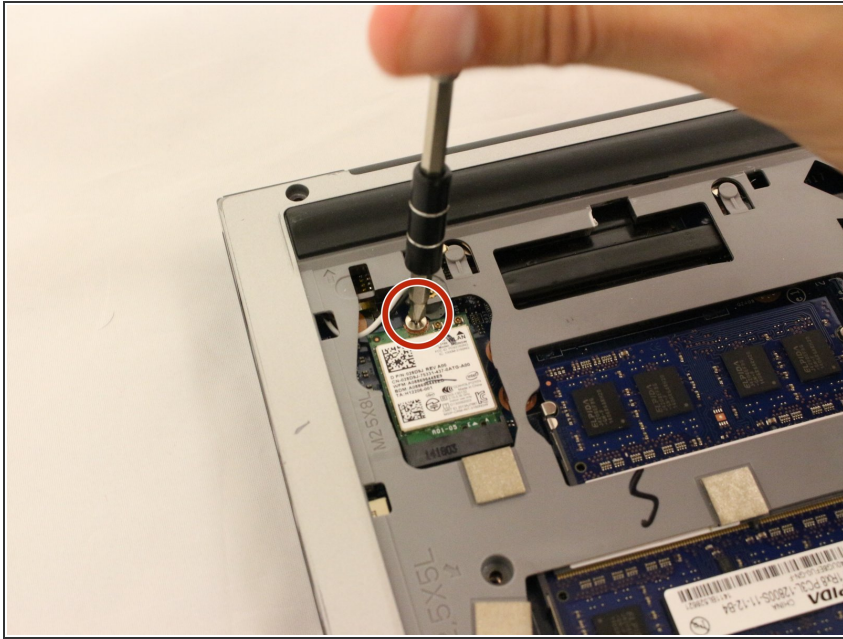
## Step 6 — Wifi Card



- Locate the Wifi card on the top left of the laptop.
- Use the tweezers to release the black and white cables.



## Step 7



- Remove one silver 2.9mm Phillips #1 screw which secures the WiFi card.

## Step 8



- ① The Wi-Fi card should slide out of the black socket.
- Use tweezers to push the white part of the Wi-Fi card up towards the top of the device to remove.
- Remove the card with the tweezers.

To reassemble your device, follow these instructions in reverse order.