



Dell Inspiron 1410 Display Assembly Replacement

Written By: Terrence15



INTRODUCTION

In this guide, we will be showing you how to remove and replace the Display Assembly.



TOOLS:

- [Phillips #0 Screwdriver](#) (1)
-

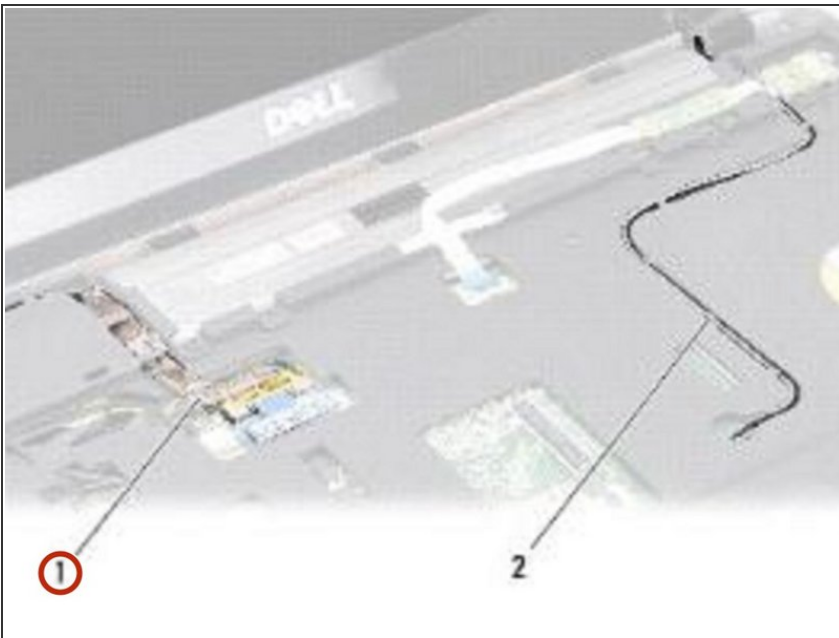
Step 1 — Removing the Mylar Tape



⚠ Before working inside your computer, read the safety information that shipped with your computer. Follow the instructions in [Before Working Inside Your Computer](#).

- Remove the mylar tapes and then remove the two screws from the back of the computer.

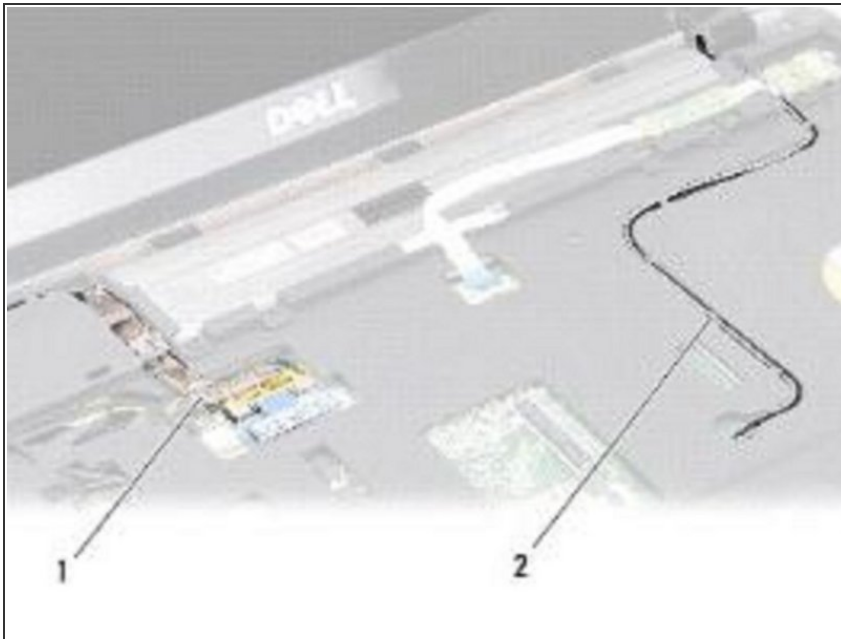
Step 2 — Disconnecting the Display Cable



i NOTE: Note how the display cable is routed through their routing guides.

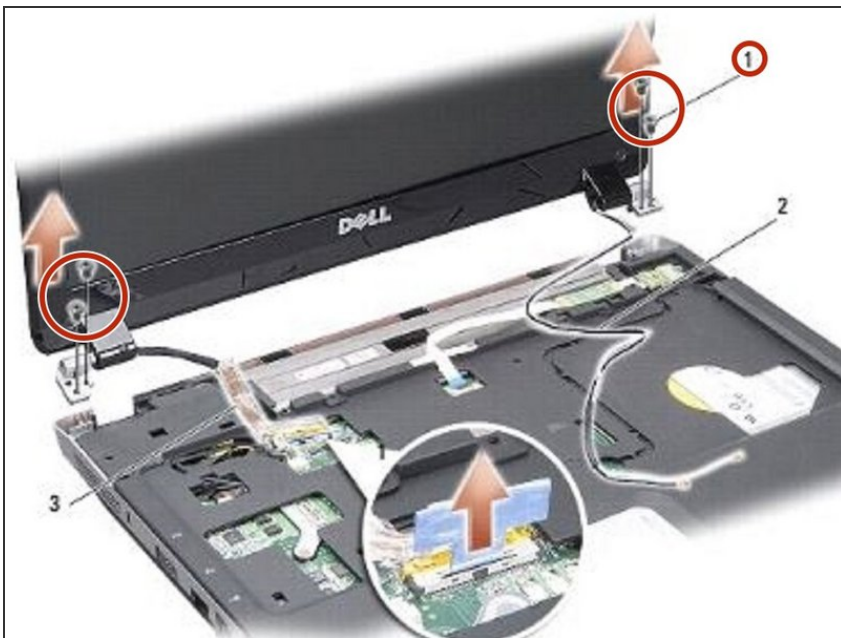
- Pull the display cable tab to disconnect the display cable from the system board connector.

Step 3 — Dislodging the Cables



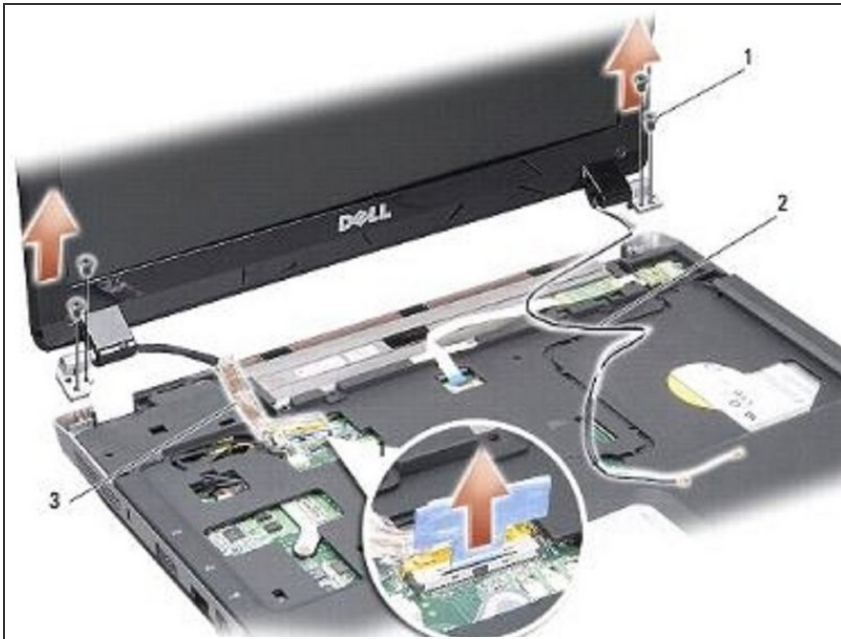
- Make note of the cable routing and carefully dislodge the WLAN antenna cables and the rest of the cables from their routing guides. Pull the cables away, so that they are clear of the palm rest.

Step 4 — Remove the Screws



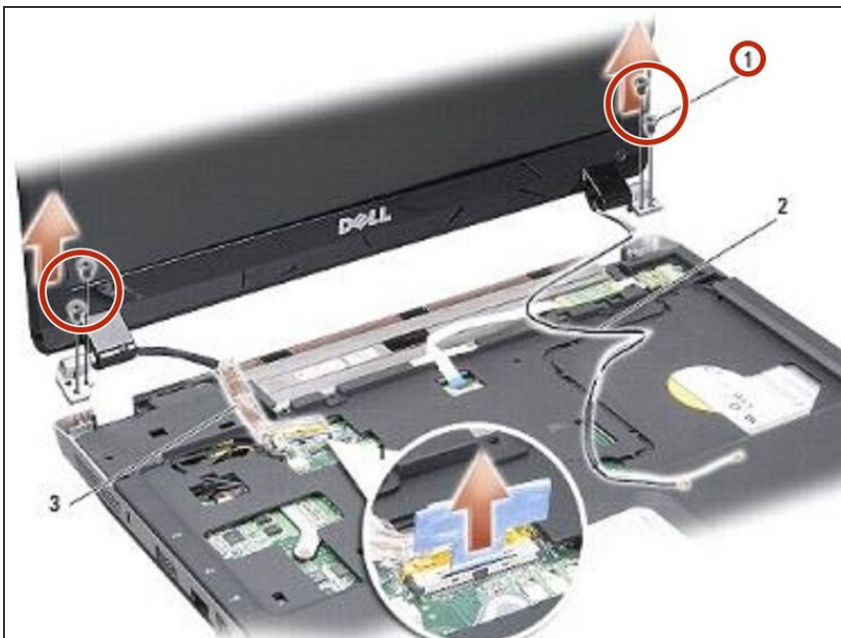
- Remove the two screws from either side of the display hinges.

Step 5 — Removing the Display Assembly



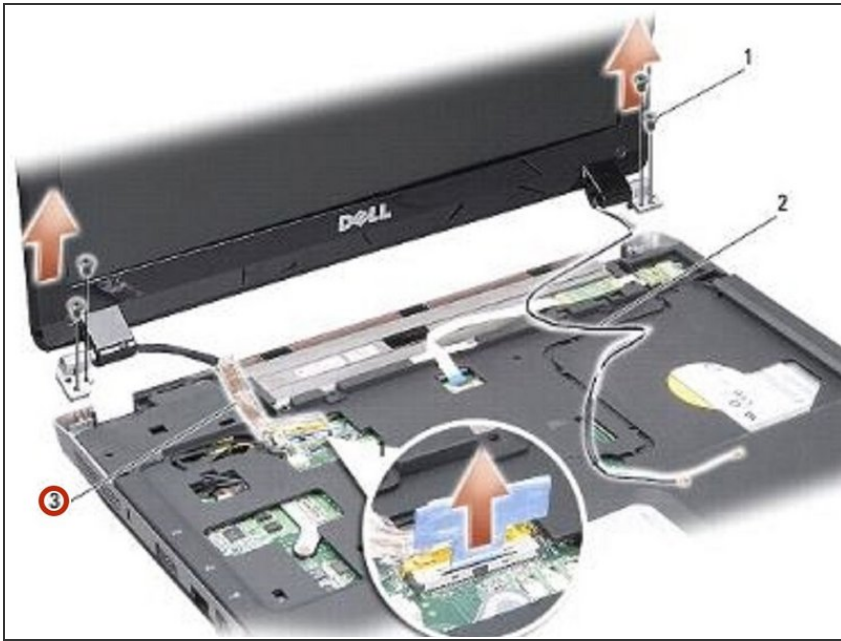
- Lift and remove the display assembly.

Step 6 — Placing the Display Assembly



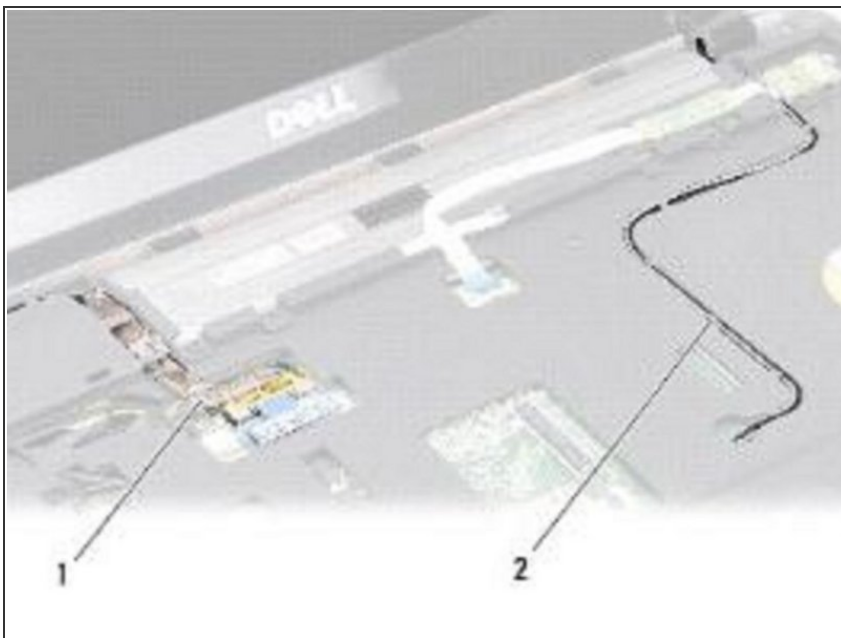
- Place the **NEW** display assembly in place and replace the two screws on each side of the display hinges.

Step 7 — Connecting the Display Cable



- Re-route and connect the display cable to the connector on the system board.

Step 8 — Routing the Antenna Cables



- Carefully route the WLAN antenna cables into their routing guides on the palm rest and through the computer base.