



Dell Inspiron 1420 Display Replacement

The display, or screen, is responsible for providing a visual interface for computer users.

Written By: Kris Karanxha



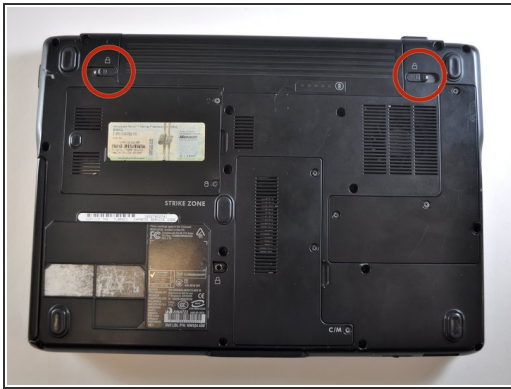
INTRODUCTION

Do you find your display is cracked, internally damaged, or covered in dead pixels? One solution can simply be replacing your screen.

TOOLS:

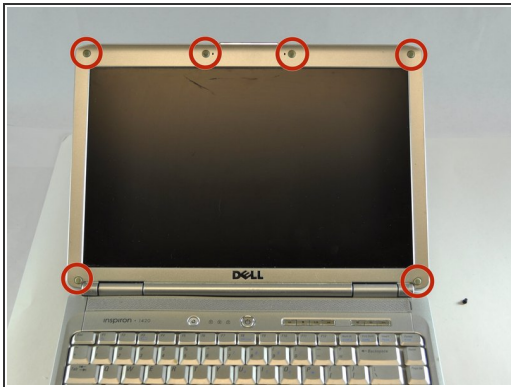
- [Phillips #00 Screwdriver](#) (1)
 - [Spudger](#) (1)
-

Step 1 — Battery



- Slide the two tabs to release the battery.
- Pull the battery out.

Step 2 — Removing the Outer Frame



- Use a spudger to pry the 6 rubber bumpers from the display.
- Using a Phillips #00 screwdriver, remove the six 4mm screws that are beneath the six rubber bumpers.

Step 3 — Removing the Outer Frame



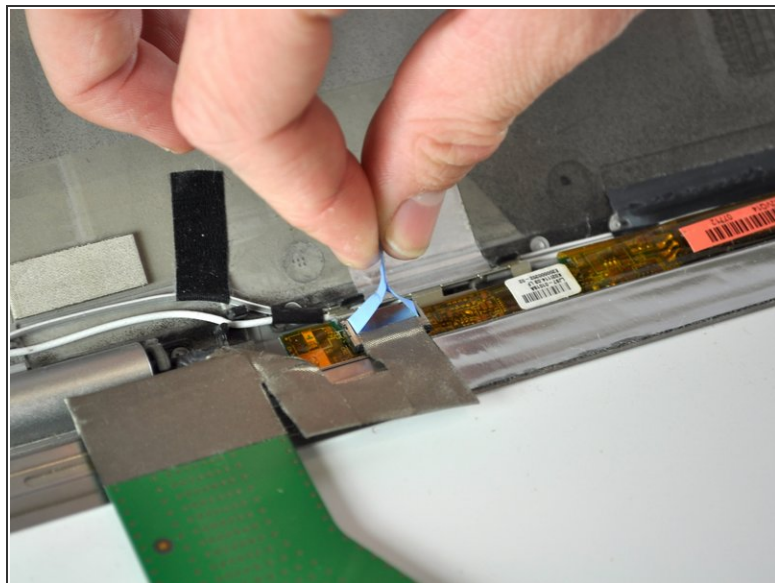
- Gently pry the frame using a spudger.
- Using a Phillips #00 screwdriver, remove the two 5mm screws at the bottom of the screen.

Step 4 — Separating the Display from the Frame



- Use a spudger to loosen the frame from the top.
- Lift up the black connector to detach the gold ribbon.

Step 5 — Removing the Power Connector Cable



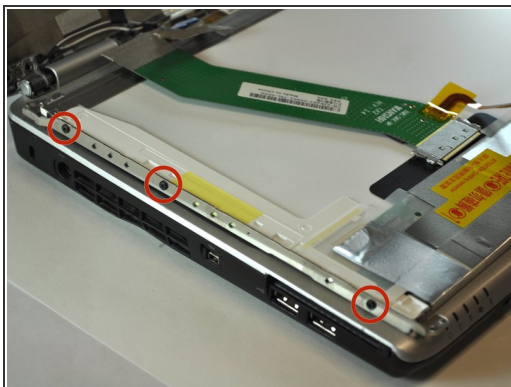
- Pull directly up on the light blue tab.

Step 6 — VGA cable



- Squeeze the two metal clips located on the VGA cable.
- Pull while squeezing the clips in order to remove the cable.

Step 7 — Isolating the Display



- Using a Phillips #00 screwdriver, remove the three 3mm screws located on both the left and right side of the laptop.
- Remove the metal brackets, one on each side, by gently pulling.

To reassemble your device, follow these instructions in reverse order.