



# Dell Inspiron 1428 Display Assembly Replacement

Written By: Terrence15



---

## INTRODUCTION

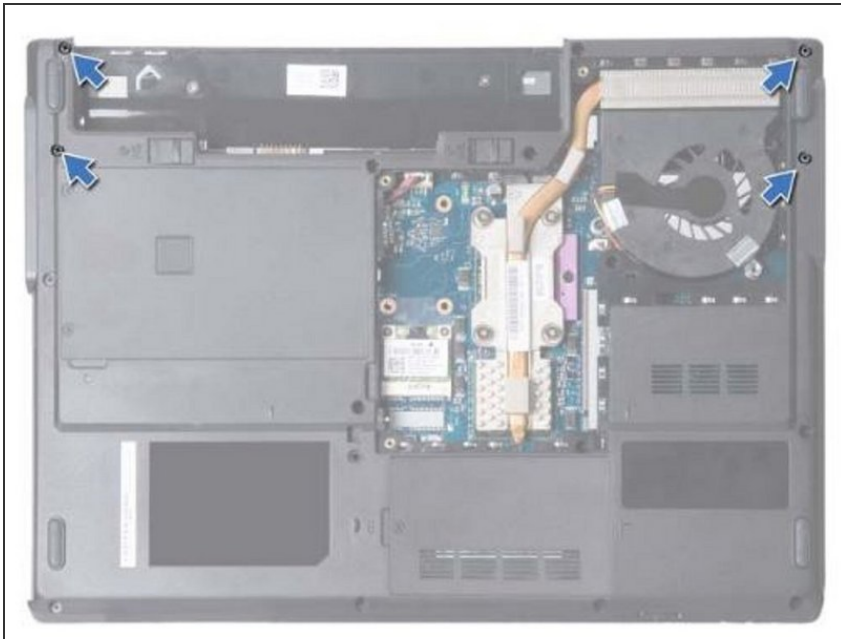
In this guide, we will be showing you how to remove and replace the Display Assembly.



### TOOLS:

- [Phillips #0 Screwdriver](#) (1)
-

## Step 1 — Routing the Cables

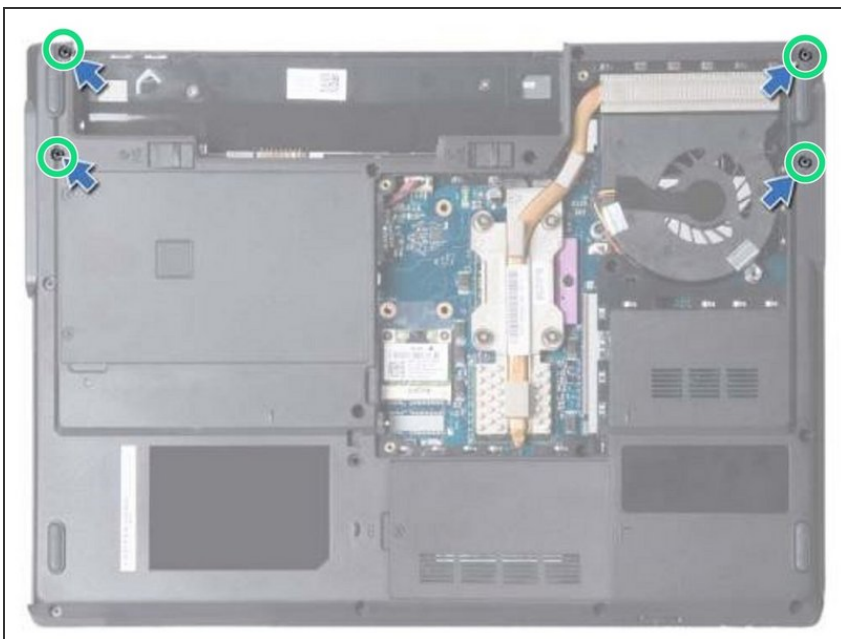


**⚠ WARNING:** Before working inside your computer, read the safety information that shipped with your computer. Follow the procedures in ["Before You Begin"](#).

**⚠ CAUTION:** To avoid electrostatic discharge, ground yourself by using a wrist grounding strap or by periodically touching an unpainted metal surface (such as a connector on your computer).

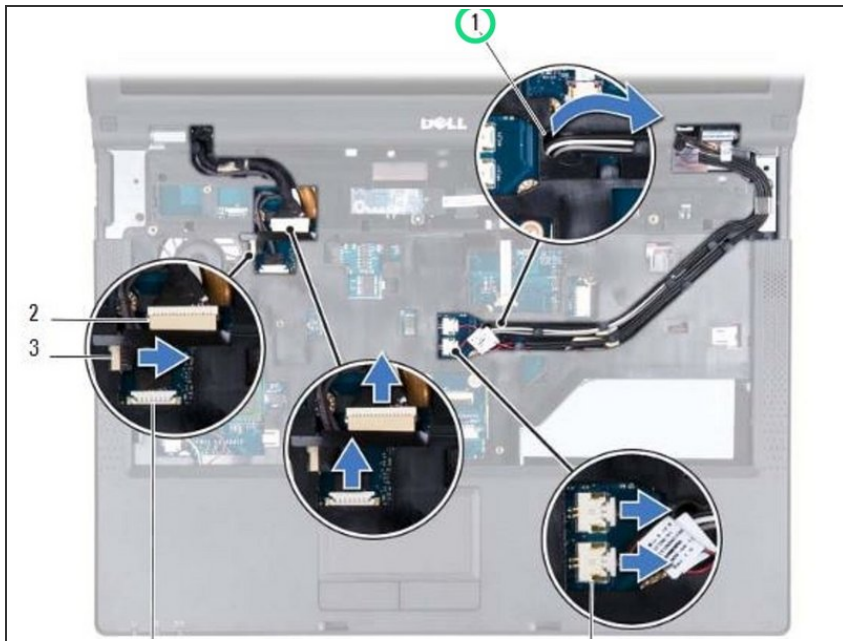
- Make note of the Mini-Card antenna cables routing and remove the cables from the routing guides.

## Step 2 — Remove the Screws



- Remove the four screws that secure the display assembly to the computer base.

### Step 3 — Dislodging the Cables



- Make note of the Mini-Card antenna cable routing and carefully dislodge the antenna cables from the cable routing slot on the computer. Pull the cables away, so that they are clear of the palm rest.

### Step 4 — Disconnecting the cables



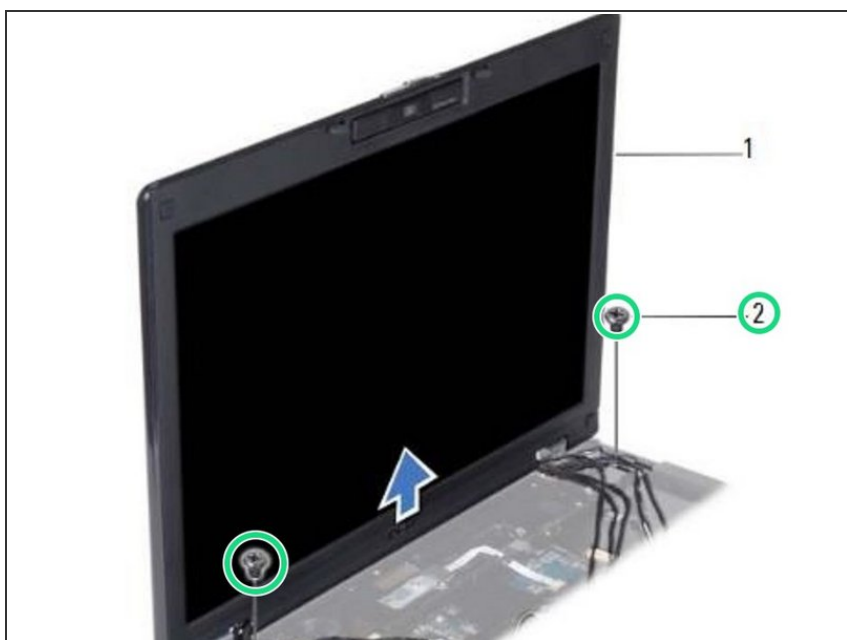
- Disconnect the display cable, inverter board cable, camera cable, and microphone cables from the respective system board connectors.

## Step 5 — Remove the Cables



- Remove the cables from their routing guides.

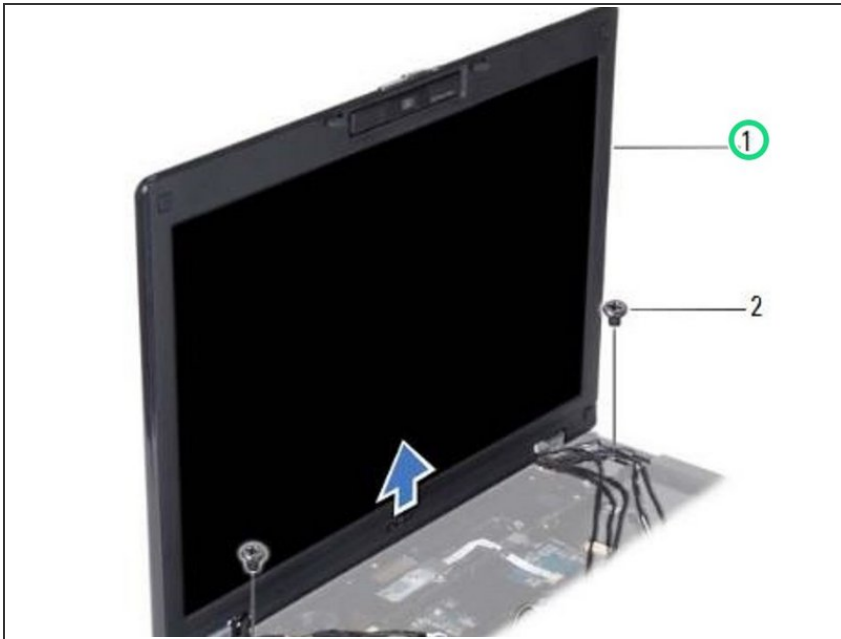
## Step 6 — Remove the Screws



- Remove the two screws that secure the display assembly to the computer base.



## Step 7 — Lifting the Display Assembly



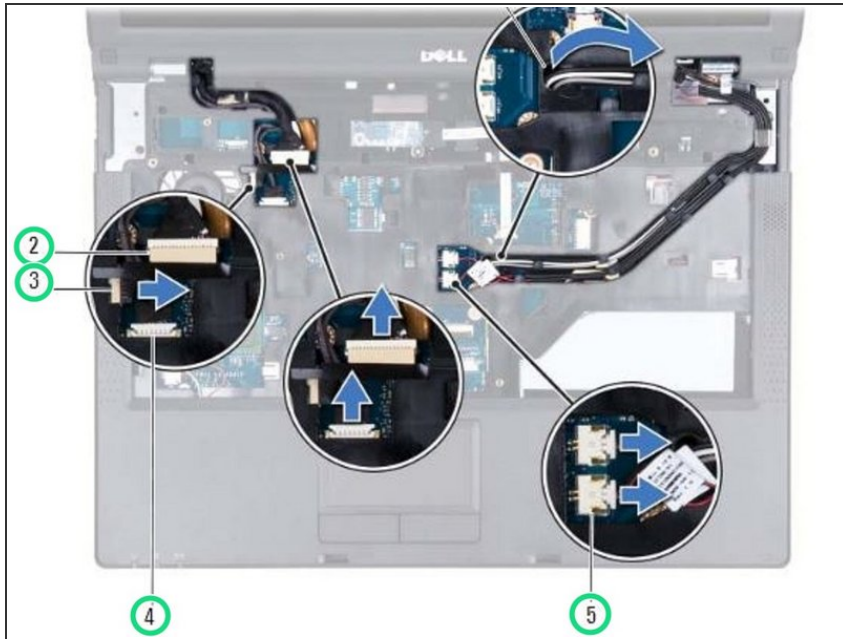
- Lift the display assembly off the computer.

## Step 8 — Placing the Display Assembly



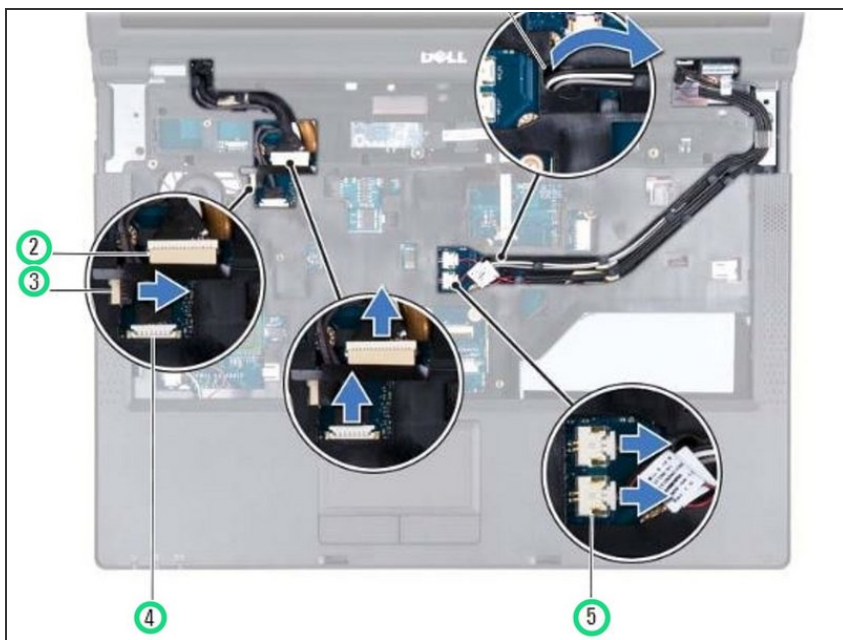
- Place the **NEW** display assembly in position and replace the two screws that secure the display assembly to the computer base.

## Step 9 — Routing the Cable



- Route all the cables through the routing guides.

## Step 10 — Connecting the Cables



- Connect the display cable, inverter board cable, and the camera cable to their respective system board connectors.