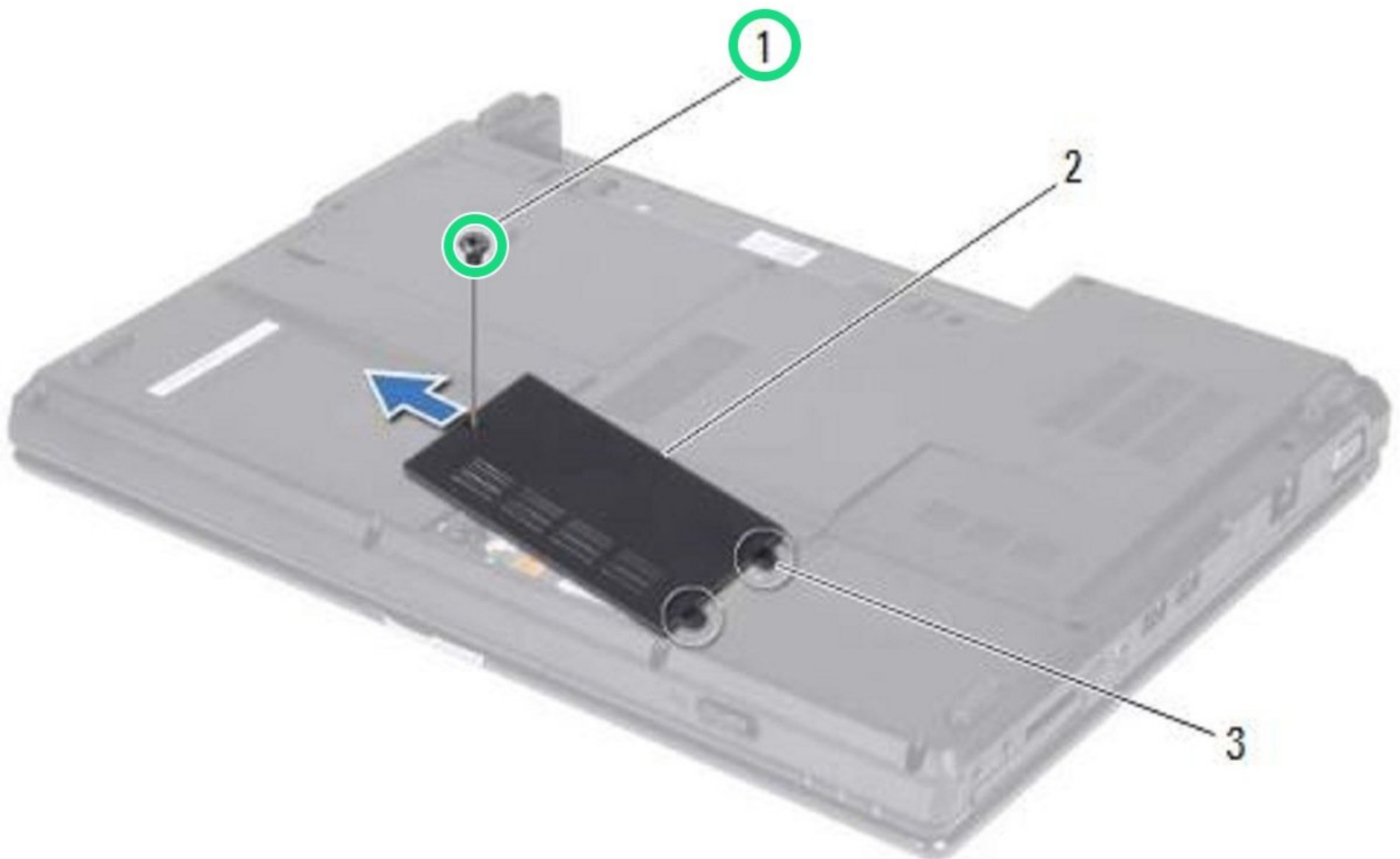




Dell Inspiron 1428 Memory Modules Replacement

Written By: Terrence15



INTRODUCTION

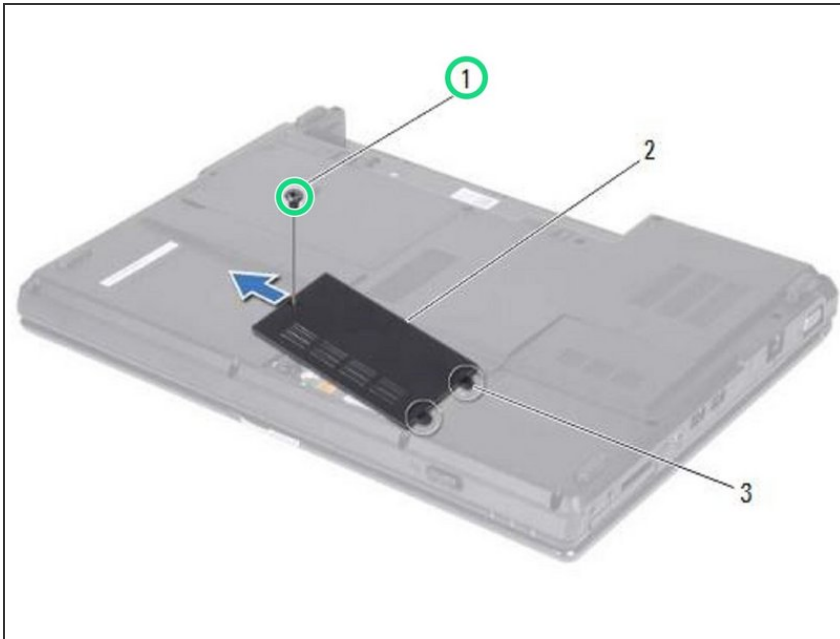
In this guide, we will show you how to remove and replace the Memory Modules.



TOOLS:

- [Phillips #0 Screwdriver](#) (1)
-

Step 1 — Remove the Screw

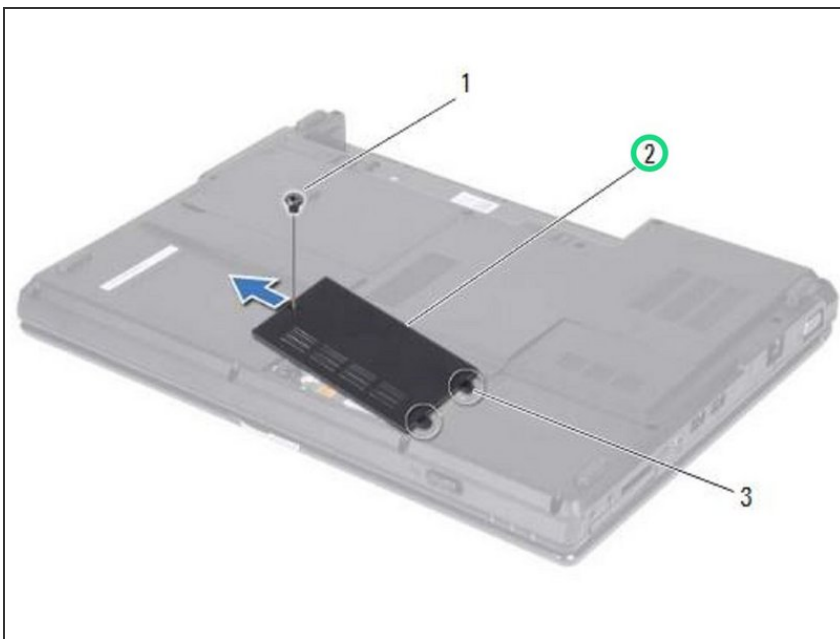


⚠ WARNING: Before working inside your computer, read the safety information that shipped with your computer. Follow the procedures in ["Before You Begin"](#).

⚠ CAUTION: To avoid electrostatic discharge, ground yourself by using a wrist grounding strap or by periodically touching an unpainted metal surface (such as a connector on your computer).

- Remove the screw that secures the memory-module cover to the computer base.

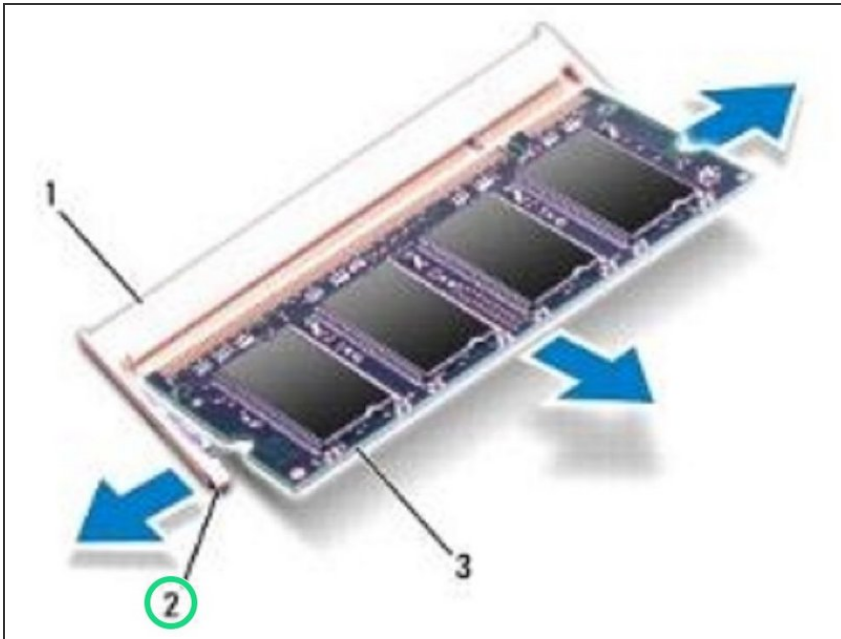
Step 2 — Removing the Module Cover



- Lift and slide the memory-module cover off the computer base.

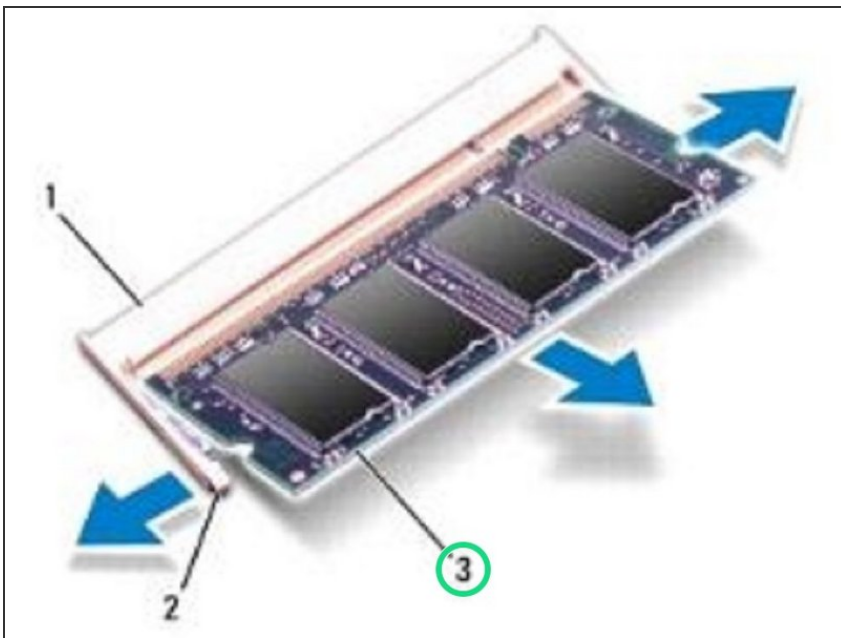
⚠ CAUTION: To prevent damage to the memory module connector, do not use tools to spread the memory module securing clips.

Step 3 — Popping up the Memory Module



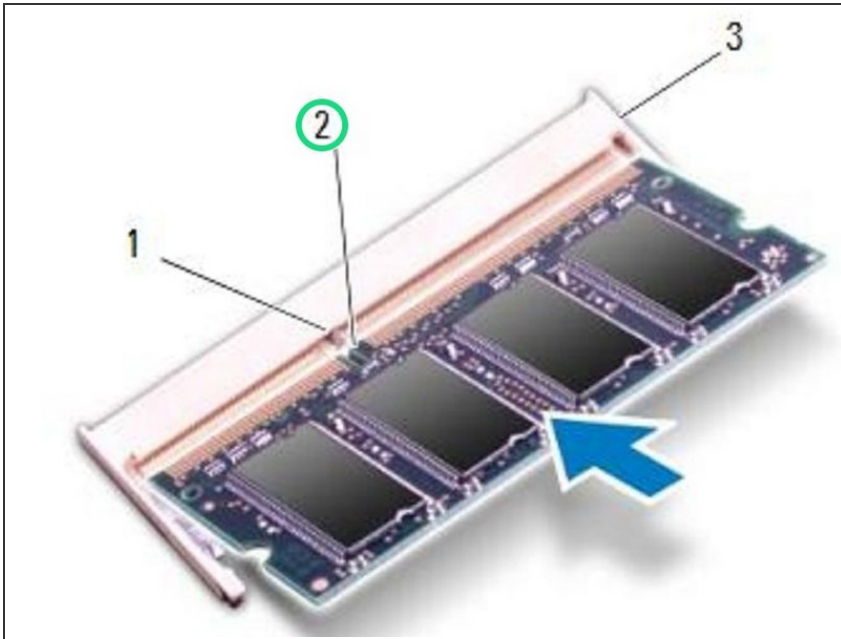
- Use your fingertips to carefully spread apart the securing clips on each end of the memory-module connector until the memory module pops up.

Step 4 — Remove the Memory Module



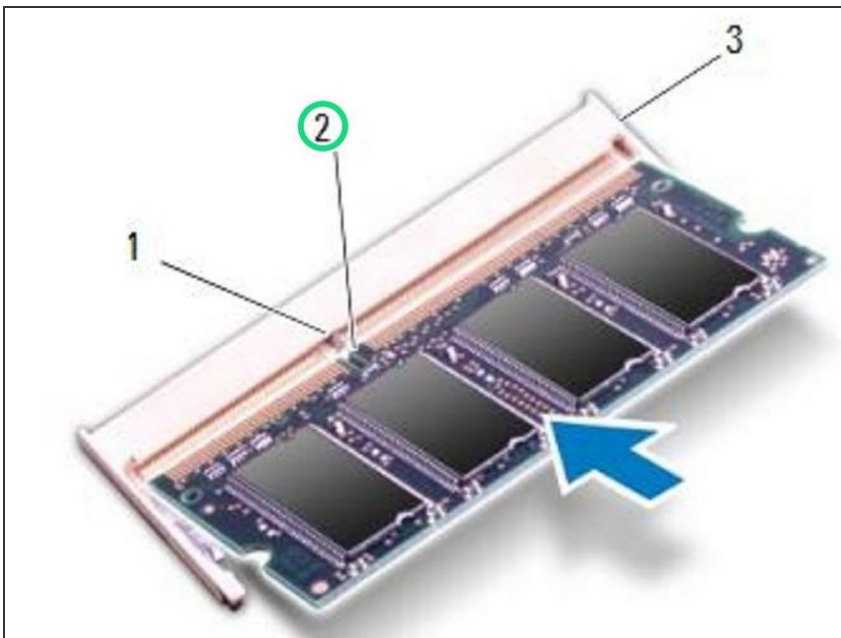
- Remove the memory module from the memory-module connector.

Step 5 — Align the Notch



- Align the notch in the **NEW** memory module with the tab in the memory module connector.

Step 6 — Sliding the Module

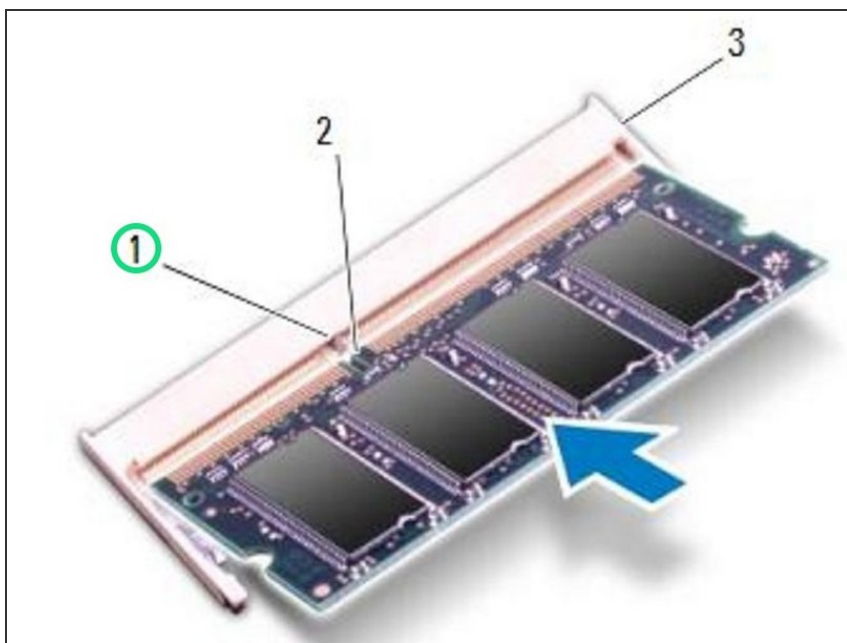


- Slide the memory module firmly into the slot at a 45-degree angle, and press the memory module down

until it clicks into place. If you do not hear the click, remove the memory module and reinstall it.

- i** NOTE: If the memory module is not installed properly, the computer may not boot.

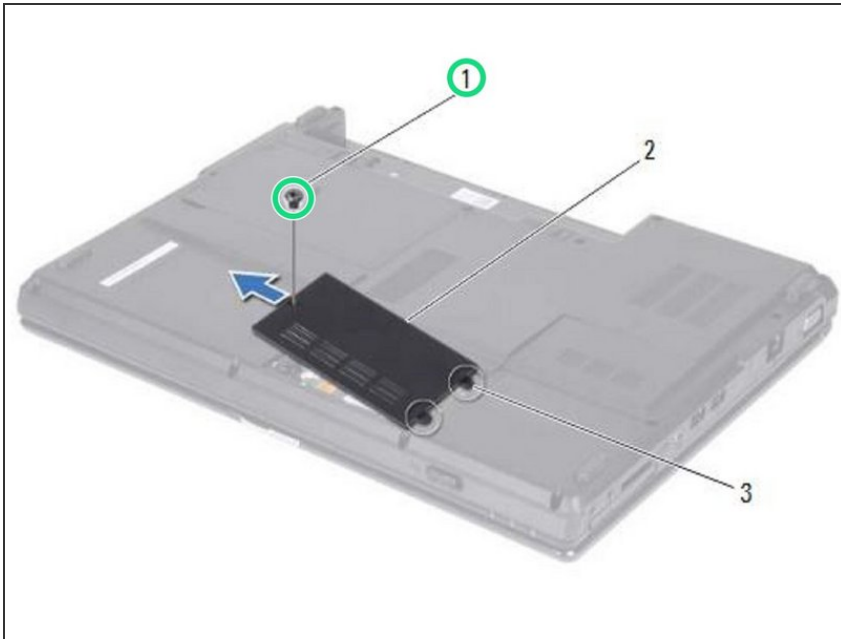
Step 7 — Align the Tabs



! CAUTION: If the memory module cover is difficult to close, remove the module and reinstall it. Forcing the cover to close may damage your computer.

- Align the tabs on the memory module cover with the slots on the computer base and place the module cover in position.

Step 8 — Replace the Screw



- Replace the screw that secures the memory module cover to the computer base.