



Written By: Tyler Lyons



INTRODUCTION

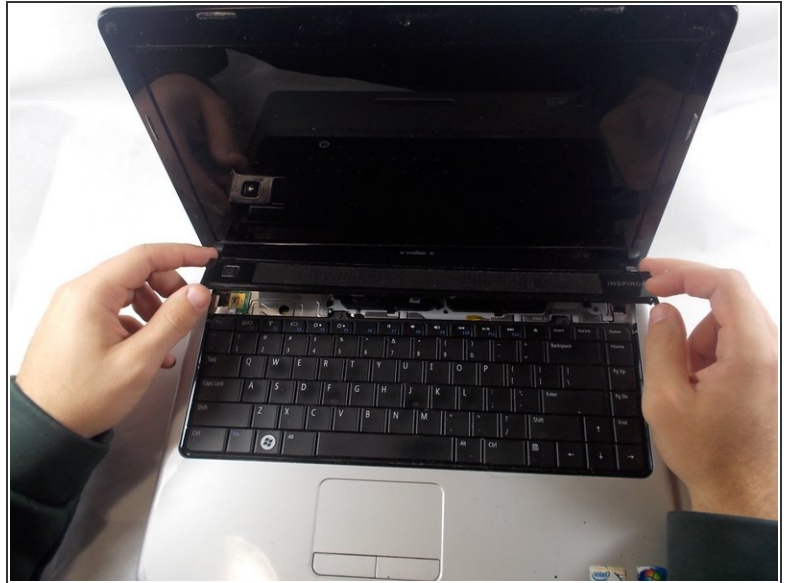
This is a step that takes a little bit of time because it requires going inside of the Dell Inspiron 1440. Make sure to have a neat space to keep track of the different screws. Before following this guide to replace the CD drive in a Dell Inspiron you will need certain tools. A screwdriver is needed to complete this process. In addition to this you will need something that can “pry” the laptop dashboard off safely. These are important in order to not damage the product while trying to fix it.



TOOLS:

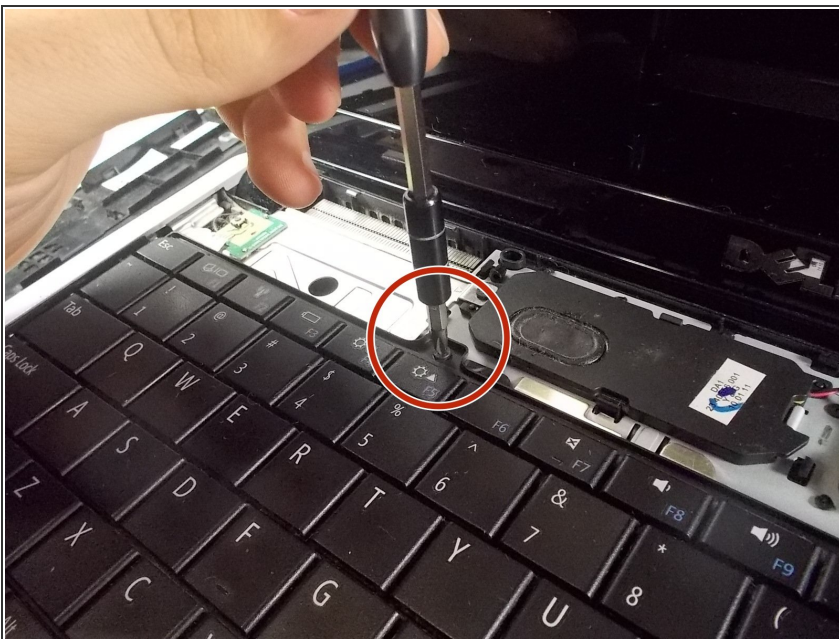
- [iFixit Opening Tools](#) (1)
- [Phillips #1 Screwdriver](#) (1)

Step 1 — Keyboard



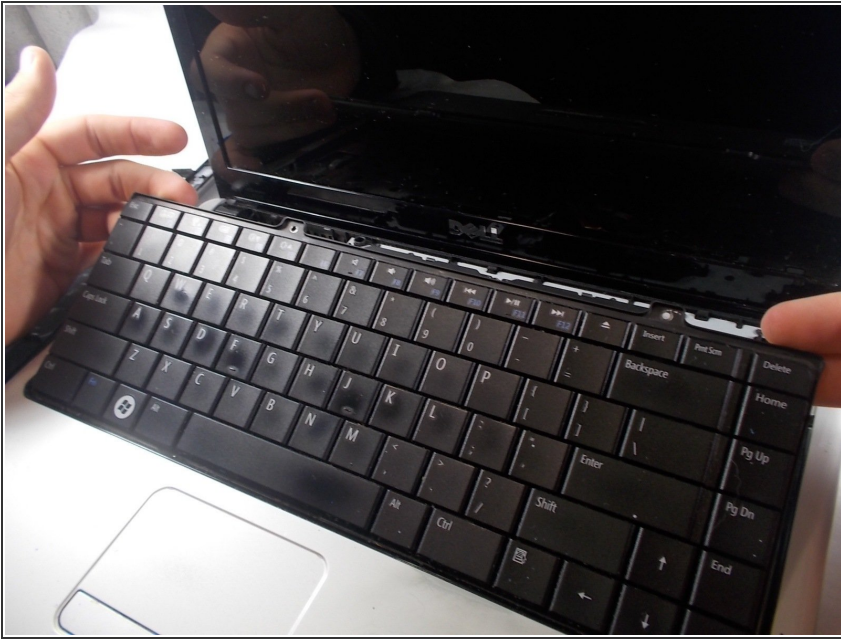
- Take off the plastic strip with the speaker cover above the keyboard using an opening tool.
- Once it pops out, pull it off.

Step 2



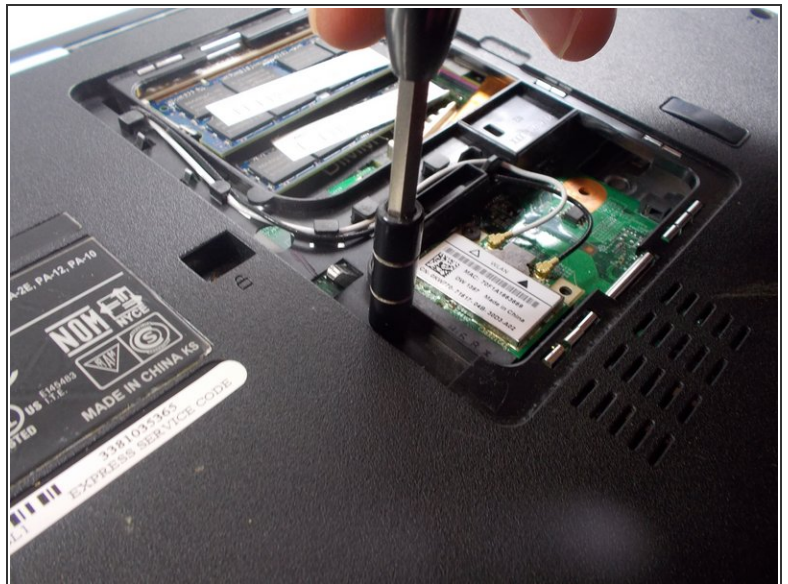
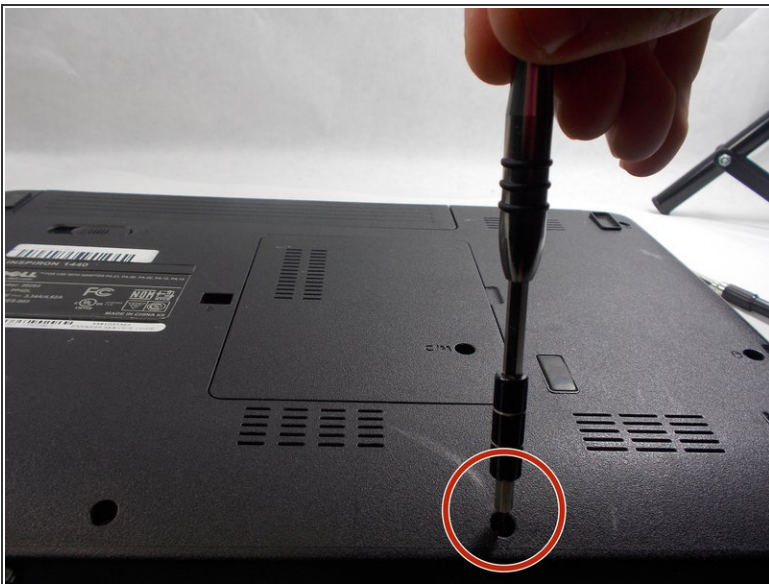
- Remove the screws at the top of the keyboard.

Step 3



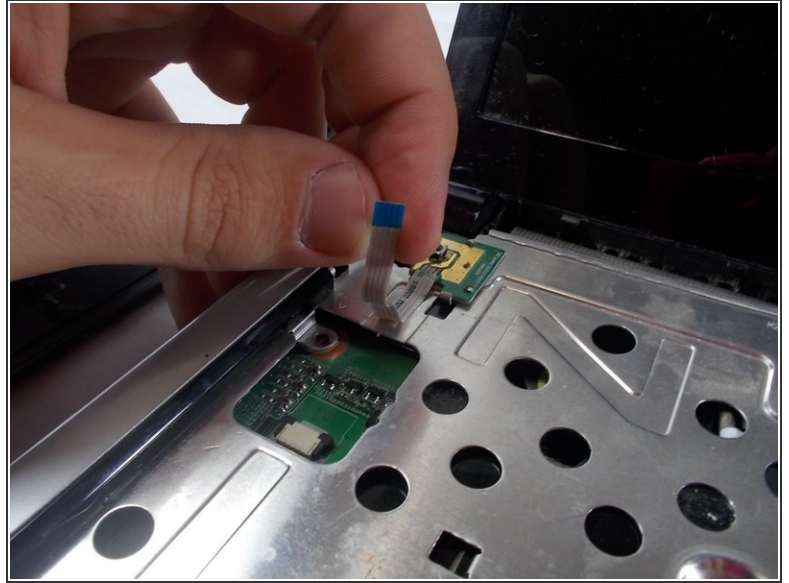
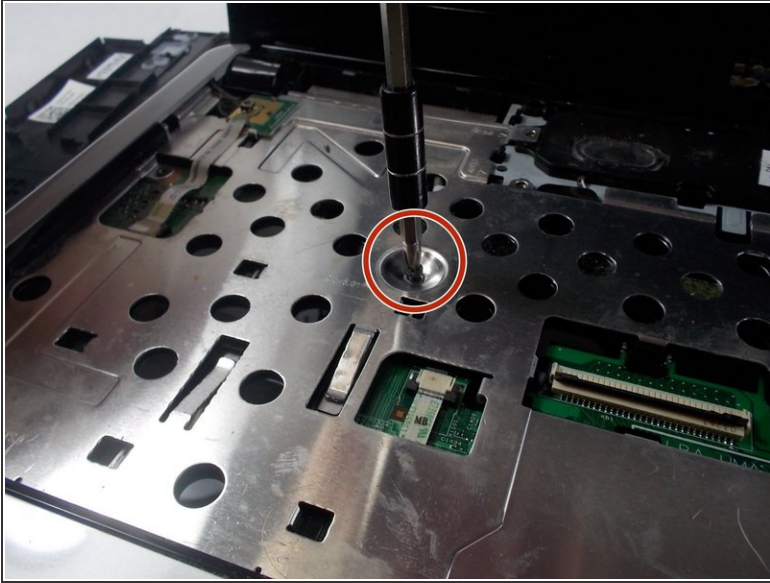
- Lift from the top part of the keyboard and pull out.

Step 4 — CD Drive



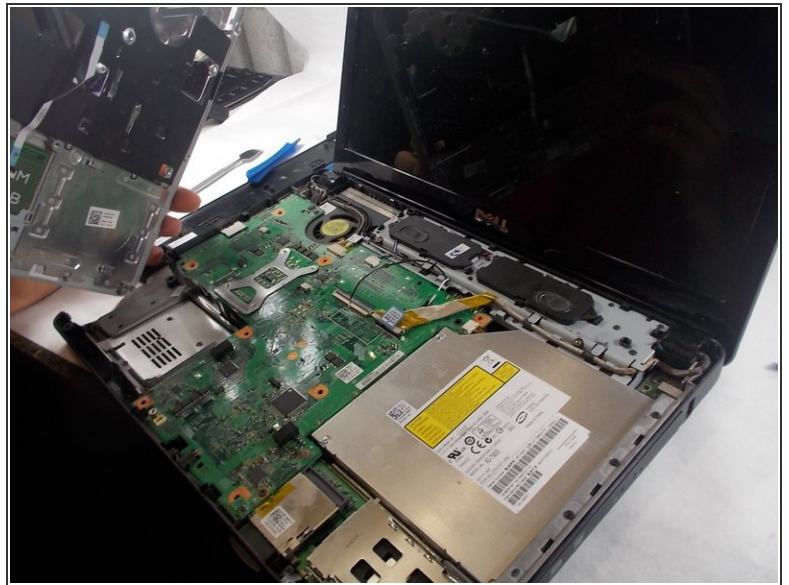
- Remove all of the 6 mm screws on the bottom of the laptop.
- ⓘ There are some that go along the edge and some that are surrounding and underneath the middle plate.

Step 5



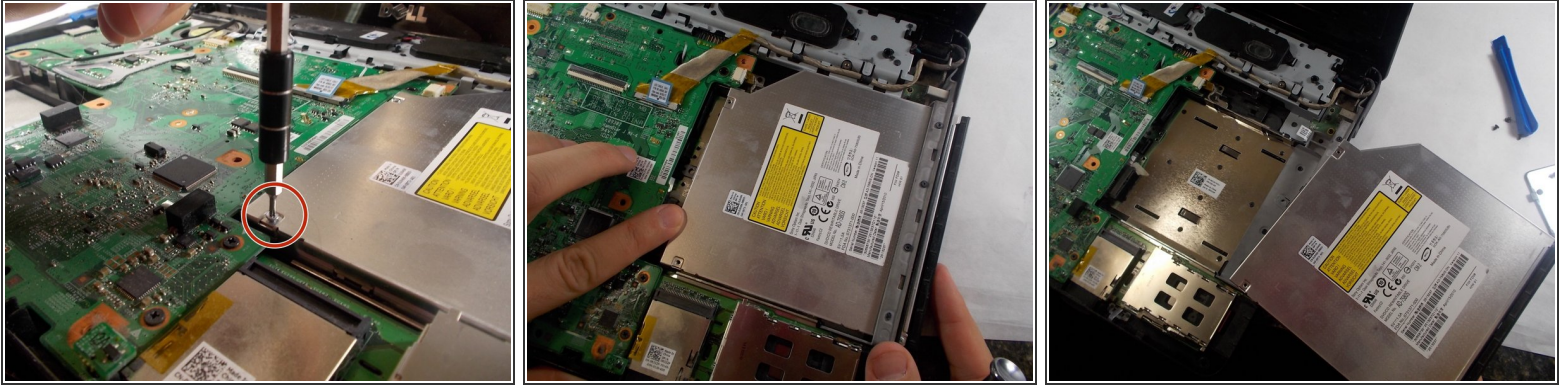
- Remove the 6 mm screws that are in the silver metal plate under the keyboard.
- Disconnect any wires that are attached to the metal plate.

Step 6



- Once all of the screws are out of the silver plate and the bottom of the laptop, pull the silver plate, which is attached to the silver plastic on top, off of the laptop.

Step 7



- Remove the 3 mm screws from the CD drive.
- Push out on the top of the CD drive to the right.
- Pull the CD drive all the way out.

To reassemble your device, follow these instructions in reverse order.