



# Dell Inspiron 1440 Display Assembly Replacement

Written By: Terrence15



---

# INTRODUCTION

In this guide, we will show you how to remove and replace the Display Assembly.





## TOOLS:

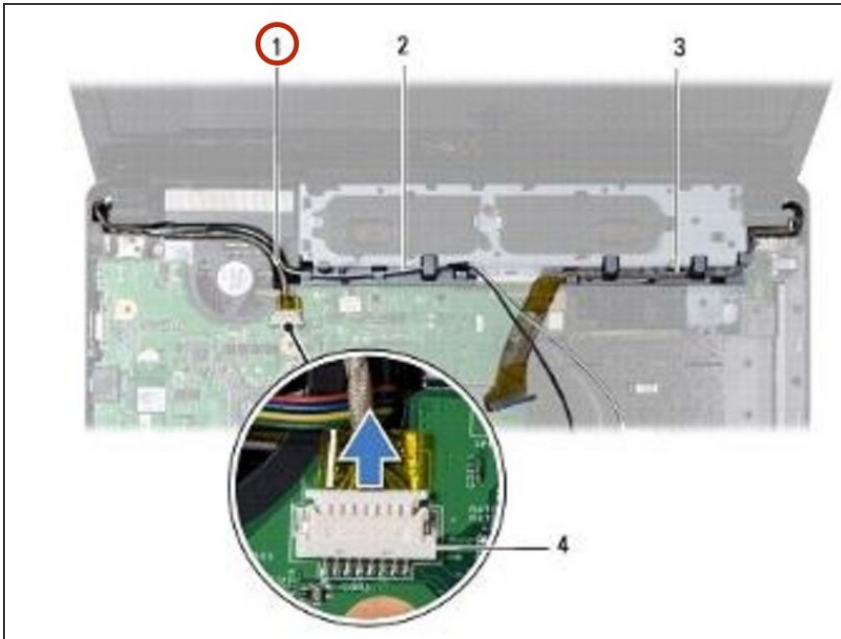
- [Essential Electronics Toolkit](#) (1)
-

## Step 1 — Remove the Screws



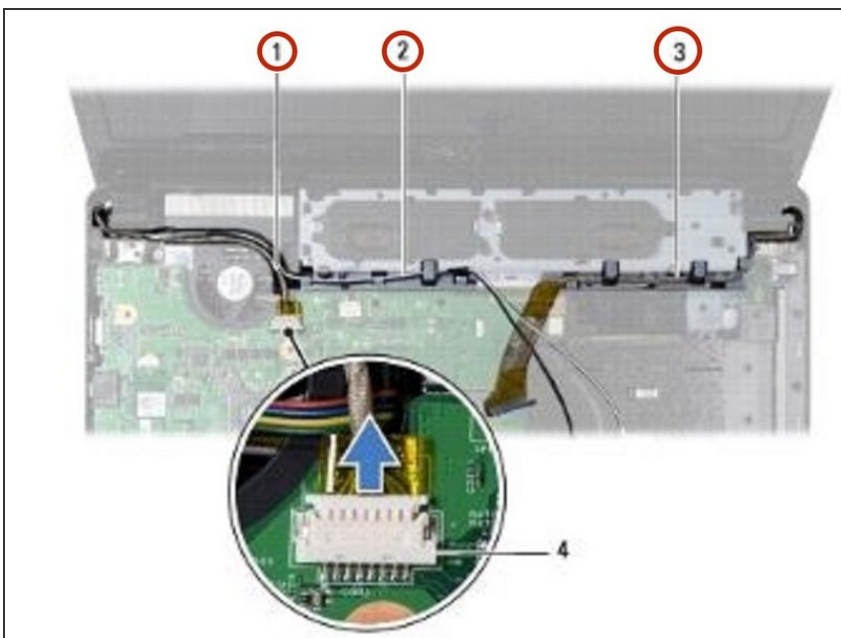
-  **WARNING:** Before working inside your computer, read the safety information that shipped with your computer. Follow the procedures in [Before You Begin](#).
-  **CAUTION:** To avoid electrostatic discharge, ground yourself by using a wrist grounding strap or by periodically touching an unpainted metal surface.
- Remove the two screws from the computer base.

## Step 2 — Disconnecting the Camera Cable



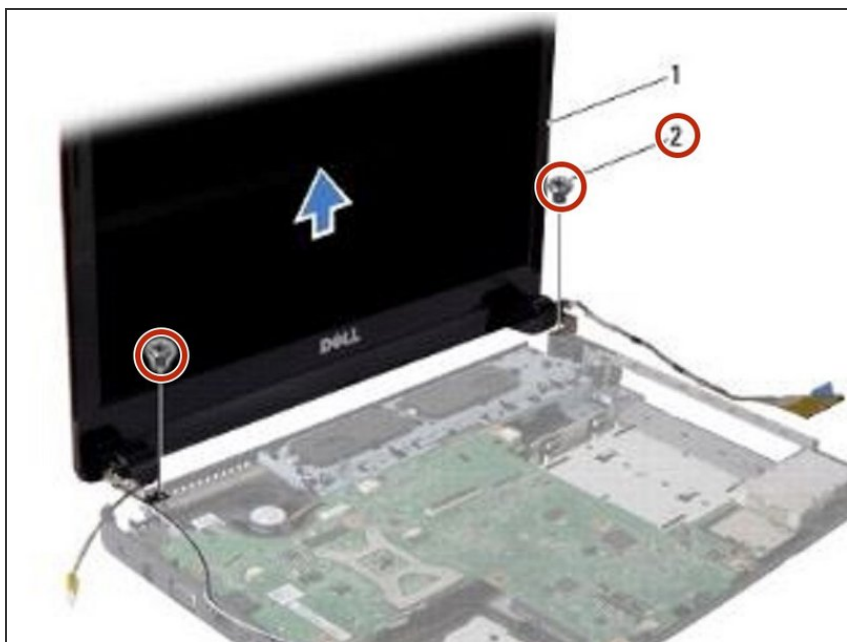
- Disconnect the camera cable from the system board connector.

## Step 3 — Removing the Cables



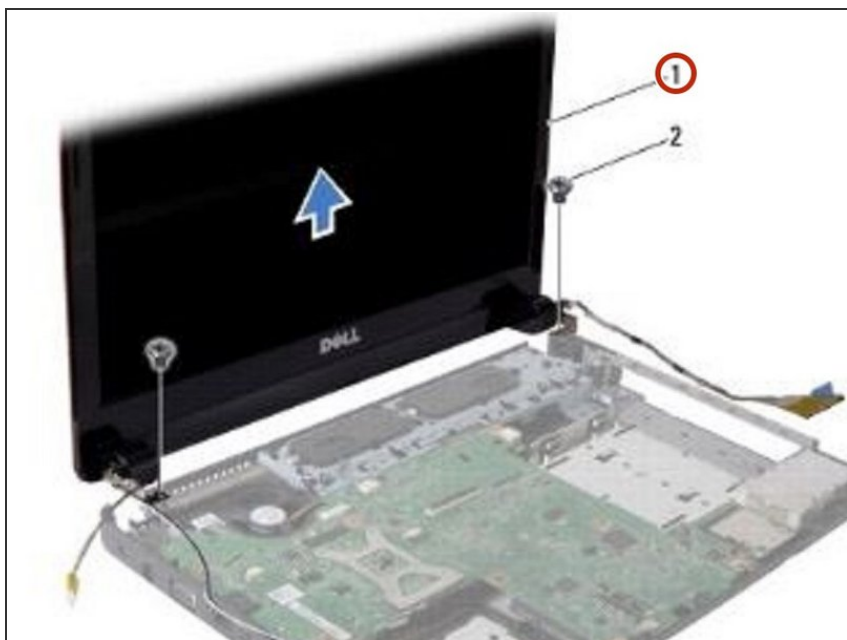
- Make note of the Mini-Card antenna cables, camera cable, and the display cable routing and remove the cables from their routing guides.

## Step 4 — Remove the Screws



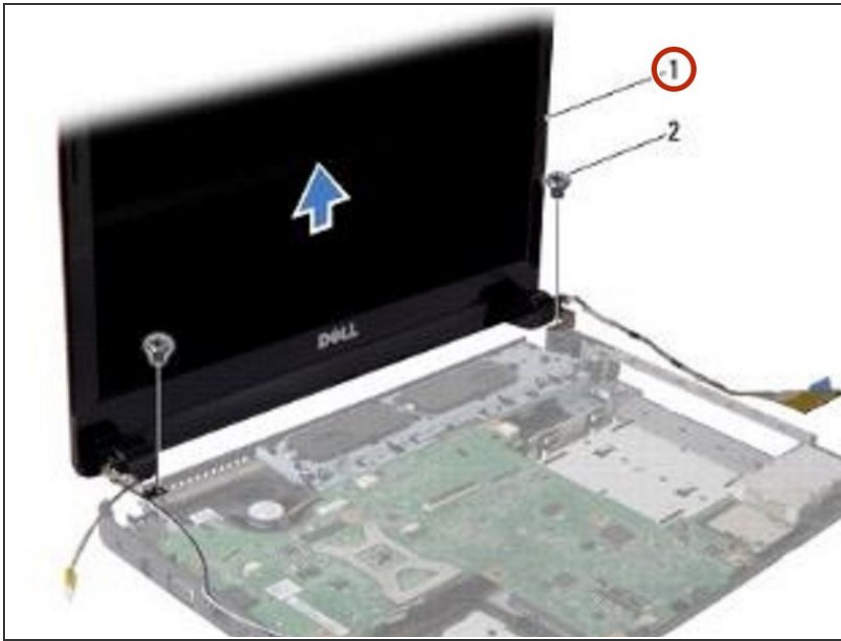
- Remove the two screws that secure the display assembly to the computer base.

## Step 5 — Removing the Display Assembly



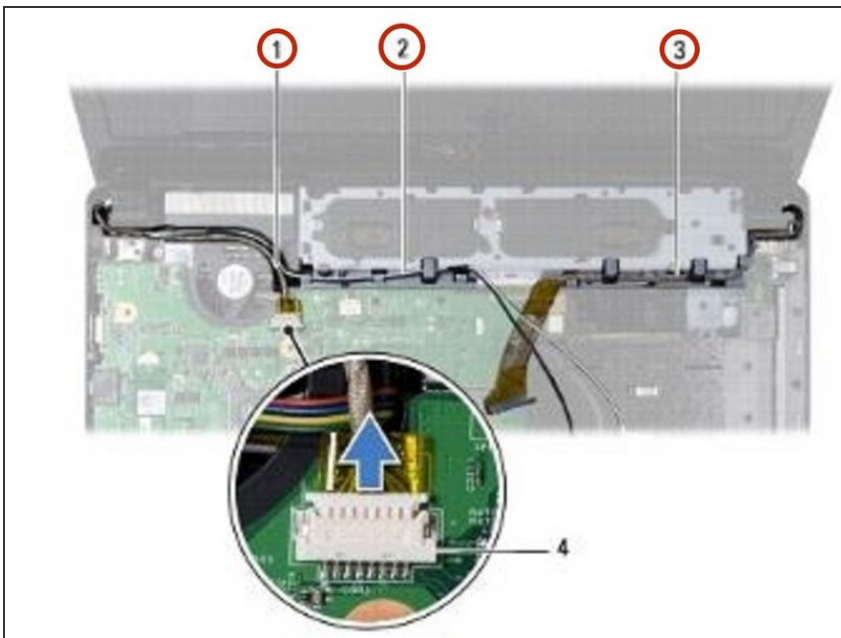
- Lift and remove the display assembly from the computer base.

## Step 6 — Placing the Display Assembly



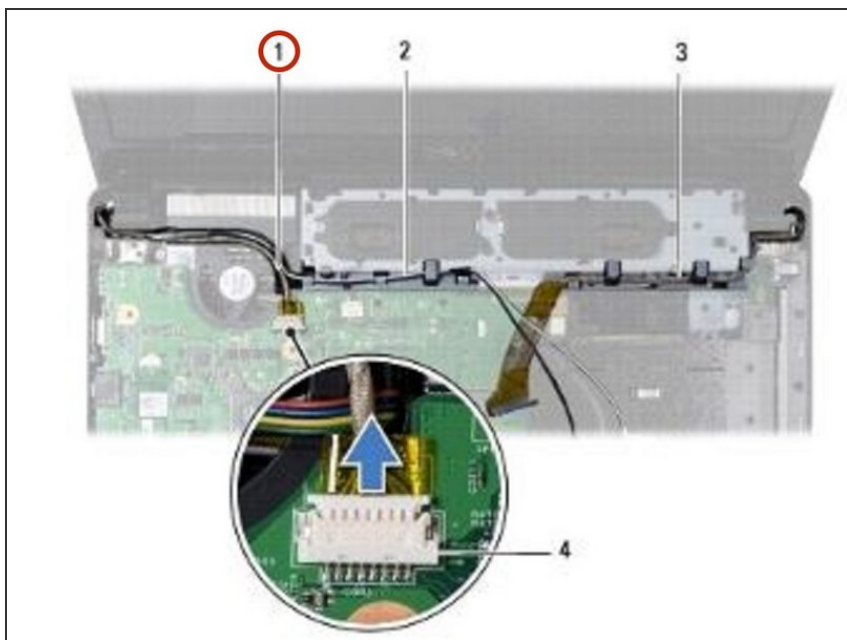
- Place the **NEW** display assembly in position and replace the two screws that secure the display assembly to the computer base.

## Step 7 — Routing the Cables



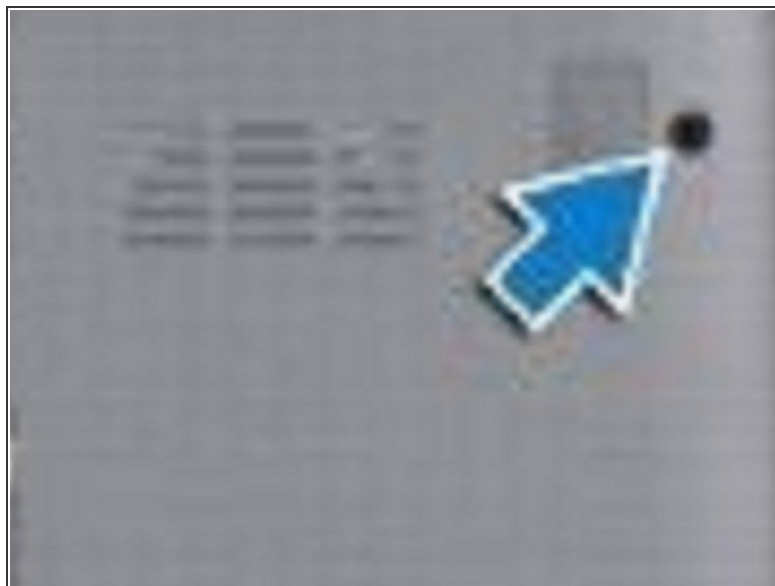
- Route the Mini-Card antenna cables, camera cable, and display cable through the routing guides.

## Step 8 — Connecting the Camera Cable



- Connect the camera cable to the system board connector.

## Step 9 — Replace the Screws



- Replace the two screws at the bottom of the computer.