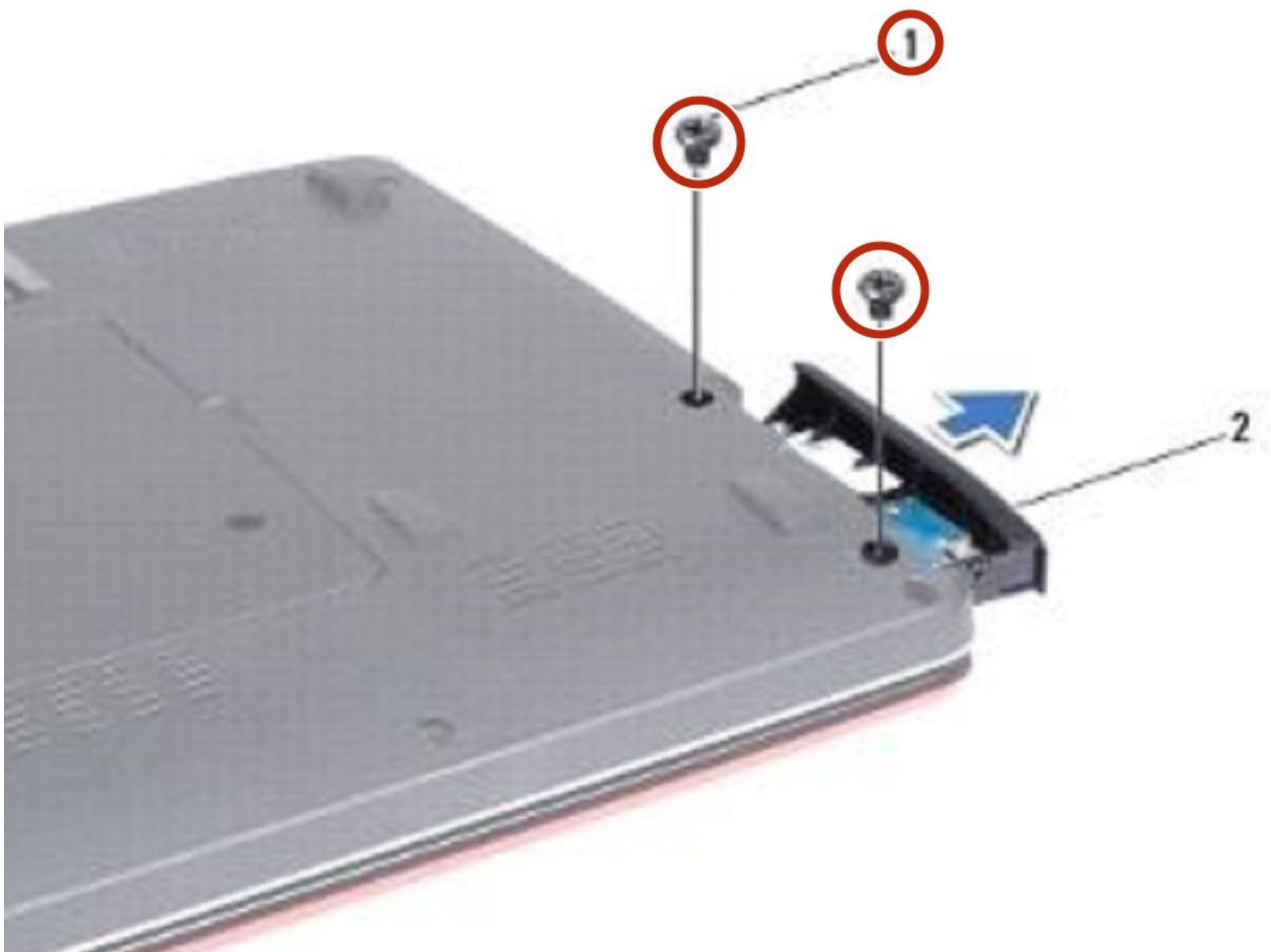




# Dell Inspiron 1440 Hard Drive Replacement

Written By: Terrence15



---

## INTRODUCTION

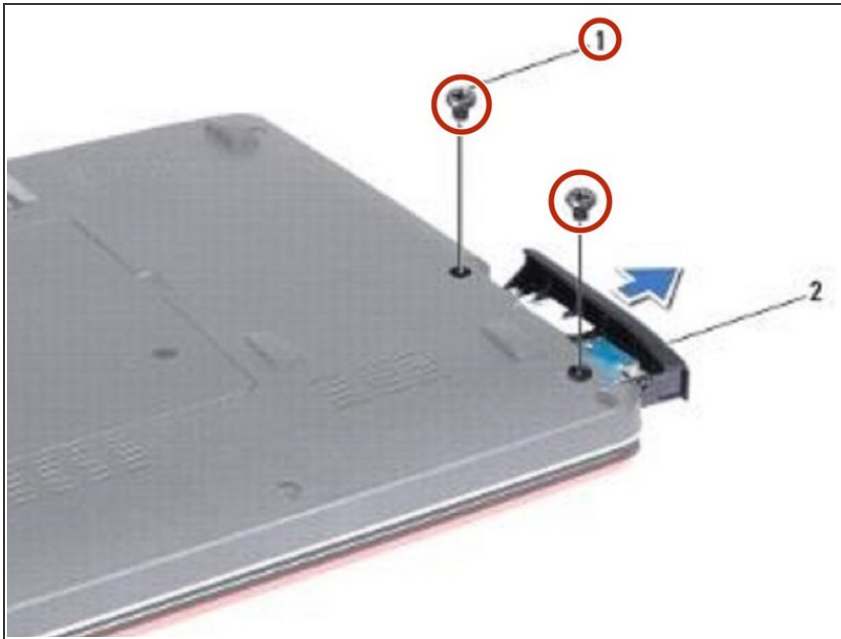
In this guide, we will show you how to remove and replace the Hard Drive.



### TOOLS:

- [Phillips #0 Screwdriver](#) (1)
-

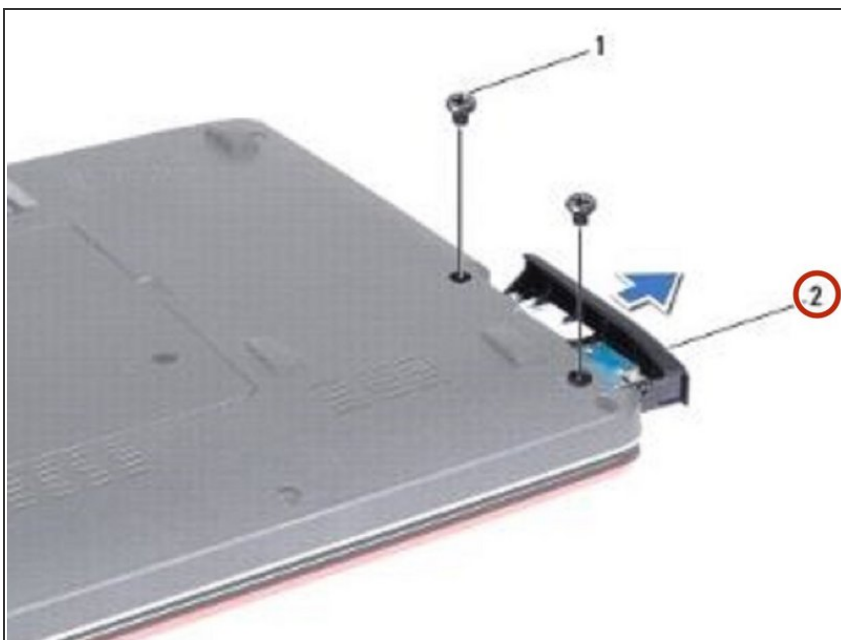
## Step 1 — Remove the Screws



**⚠ WARNING:** Before working inside your computer, read the safety information that shipped with your computer. Follow the procedures in [Before You Begin](#).

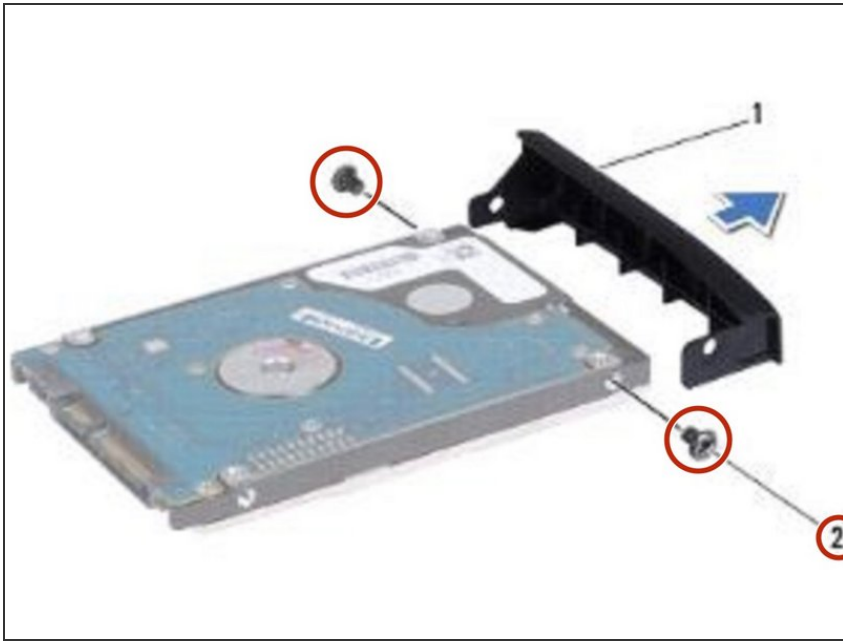
- Remove the two screws that secure the hard drive assembly to the computer base.

## Step 2 — Sliding the Hard Drive Assembly



- Slide the hard drive assembly out of the hard drive compartment.

### Step 3 — Remove the Screws



- Remove the two screws that secure the hard drive bezel to the hard drive.

### Step 4 — Remove the Hard Drive



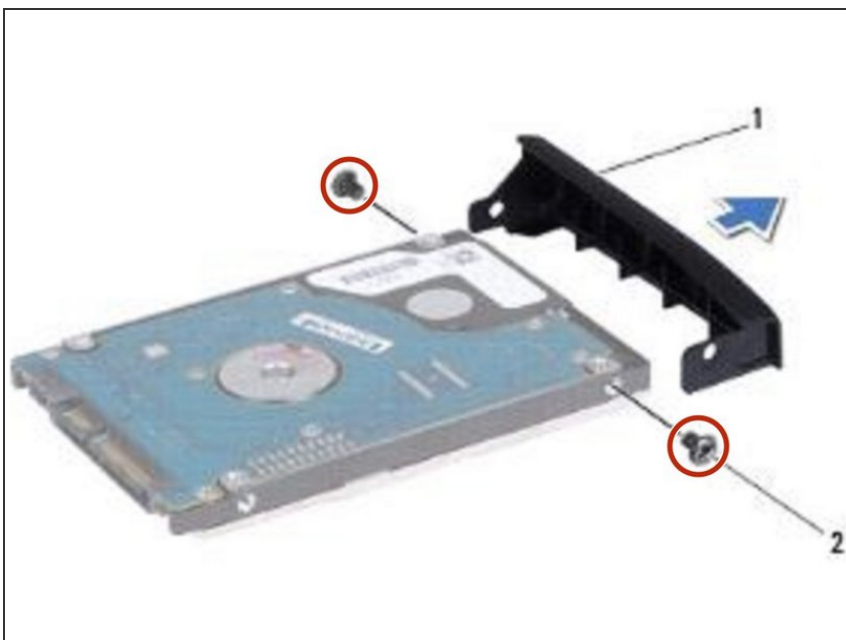
- Remove the hard drive.

## Step 5 — Align the Screw Holes



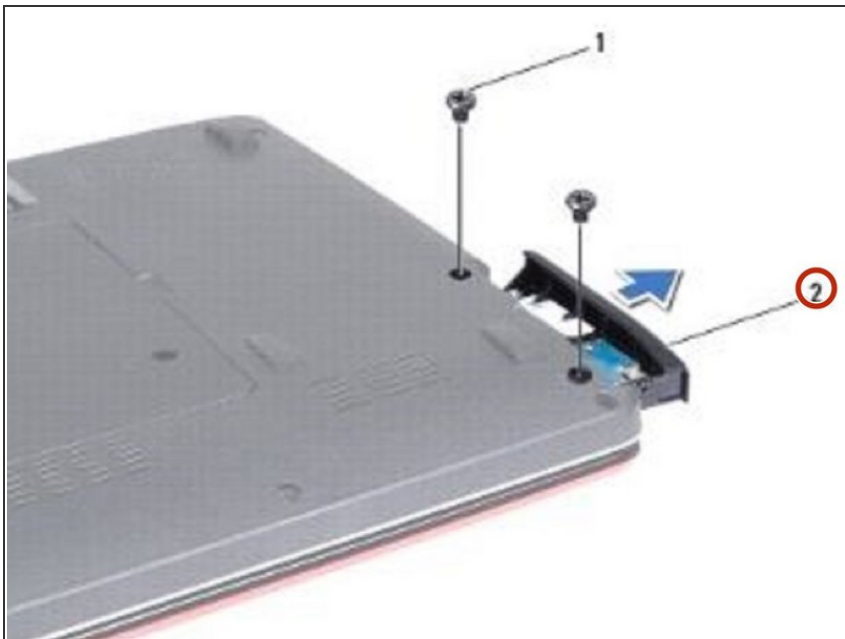
- Align the screw holes on the hard drive bezel with the holes on the hard drive.

## Step 6 — Replace the Screws



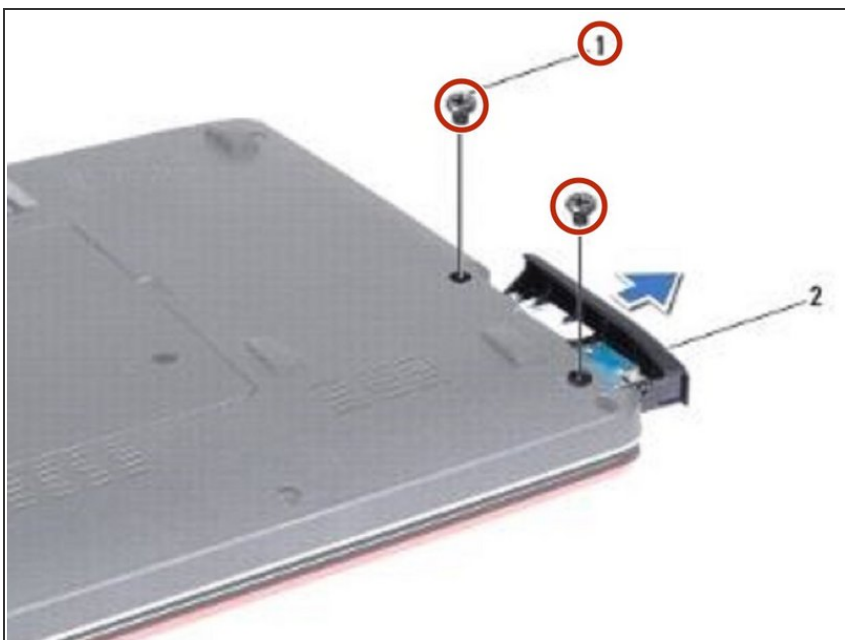
- Replace the two screws that secure the hard drive bezel to the hard drive.

## Step 7 — Sliding the Hard Drive Assembly



- Slide the hard drive assembly into the hard drive compartment until it is fully seated.

## Step 8 — Replace the Screws



- Replace the two screws that secure the hard drive assembly to the computer base.