



Dell Inspiron 14R 5420 Display Assembly Replacement

Written By: Terrence15



INTRODUCTION

In this guide, we will be showing you how to remove and replace the Display Assembly.



TOOLS:

- [Phillips #0 Screwdriver](#) (1)
-

Step 1 — Close the Display



⚠ WARNING: Before working inside your computer, read the safety information that shipped with your computer and follow the steps in ["Before You Begin"](#).

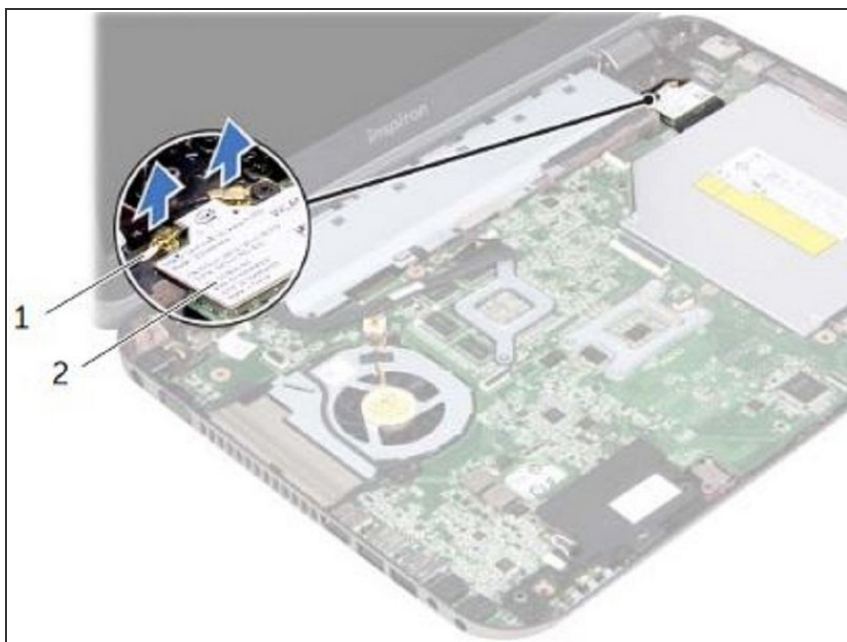
- Close the display and turn the computer over.

Step 2 — Remove the Screws



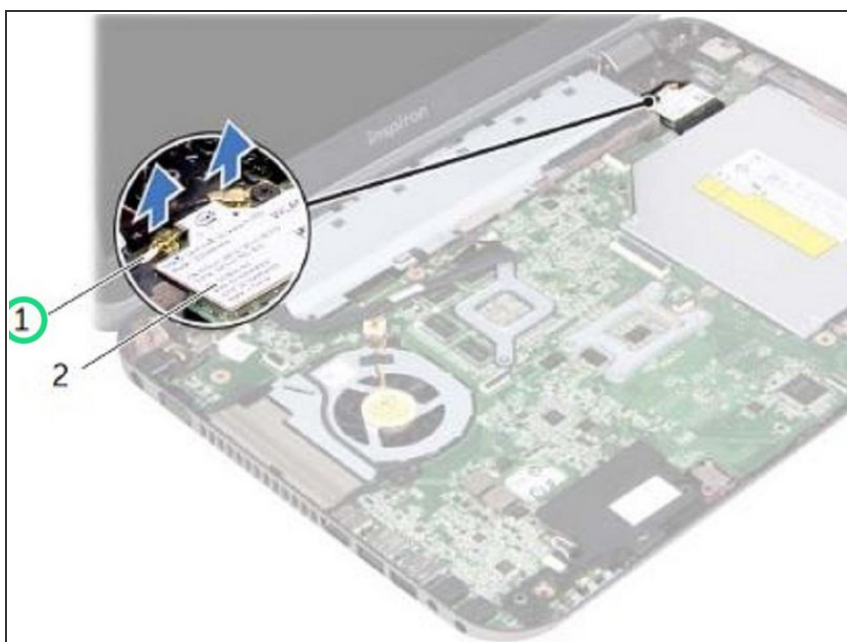
- Remove the screws that secure the display assembly to the computer base.

Step 3 — Open the Display



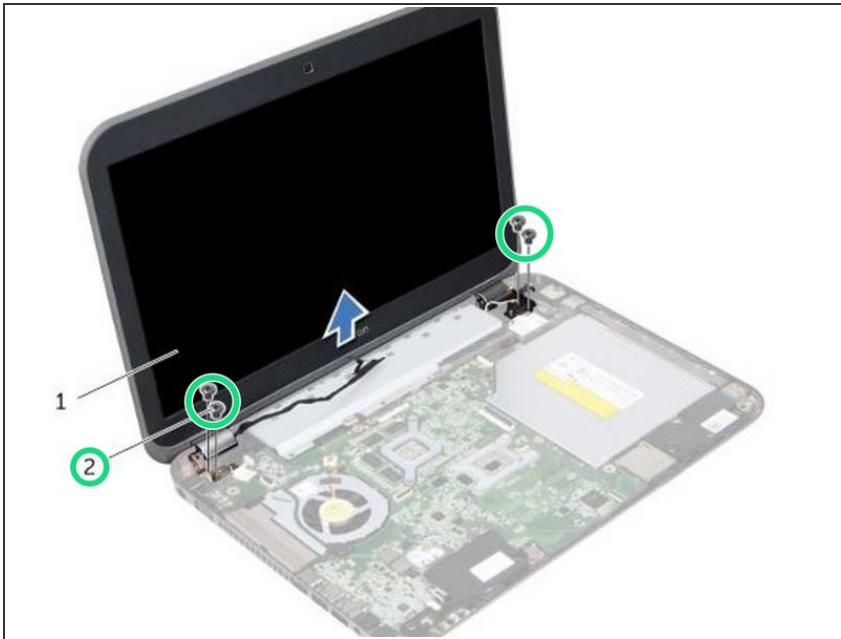
- Turn the computer over and open the display as far as possible.

Step 4 — Disconnecting the Antenna Cables



- Disconnect the antenna cables from the connectors on the Mini-Card.

Step 5 — Remove the Screws



- Remove the screws that secure the display assembly to the computer base.

Step 6 — Removing the Display Assembly



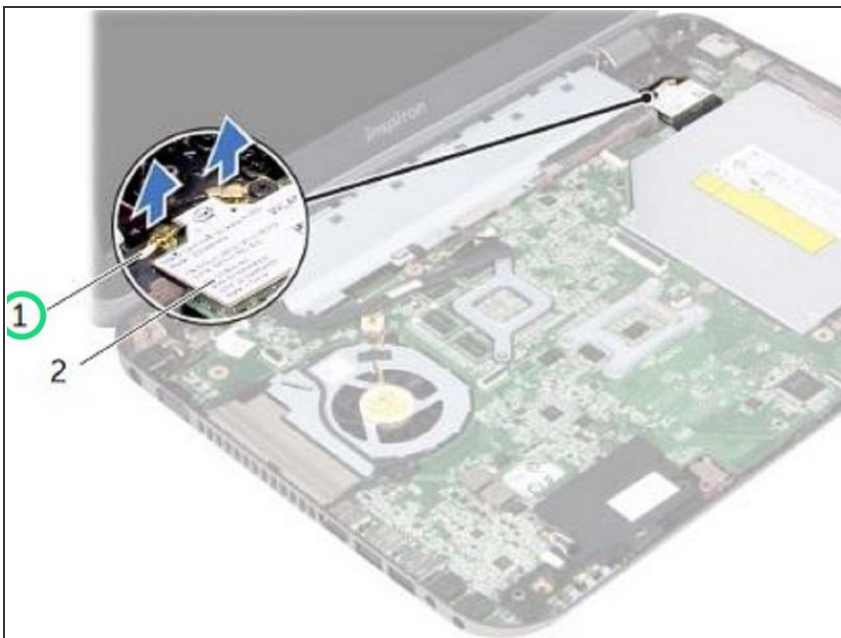
- Lift the display assembly off the computer base.

Step 7 — Placing the Display Assembly



- Place the **NEW** display assembly in position and replace the screws that secure the display assembly to the computer base.

Step 8 — Connecting the Antenna Cables



- Connect the antenna cables to the connectors on the Mini-Card.

Step 9 — Close the Display



- Close the display and turn the computer over.

Step 10 — Replace the Screws



- Replace the screws that secure the display assembly to the computer base.