



# Dell Inspiron 14R Display Assembly Replacement

Written By: Terrence15



---

# INTRODUCTION

In this guide, we will show you how to remove and replace the Display Assembly.

---

## TOOLS:

- [Phillips #0 Screwdriver](#) (1)
-

## Step 1 — Remove the Screws

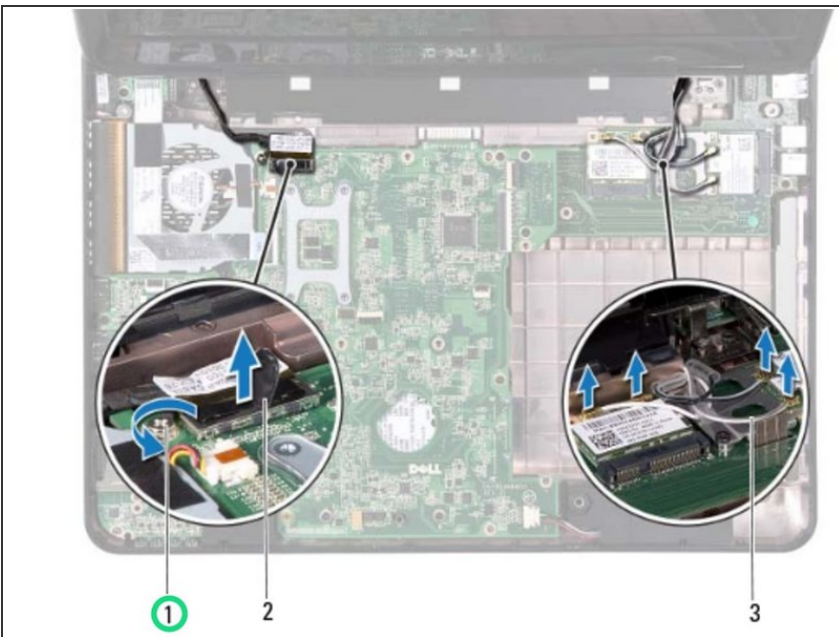


**WARNING:** Before working inside your computer, read the safety information that shipped with your computer. Follow the instructions in ["Before You Begin"](#).

**CAUTION:** To avoid electrostatic discharge, ground yourself by using a wrist grounding strap or by periodically touching an unpainted metal surface (such as a connector on your computer).

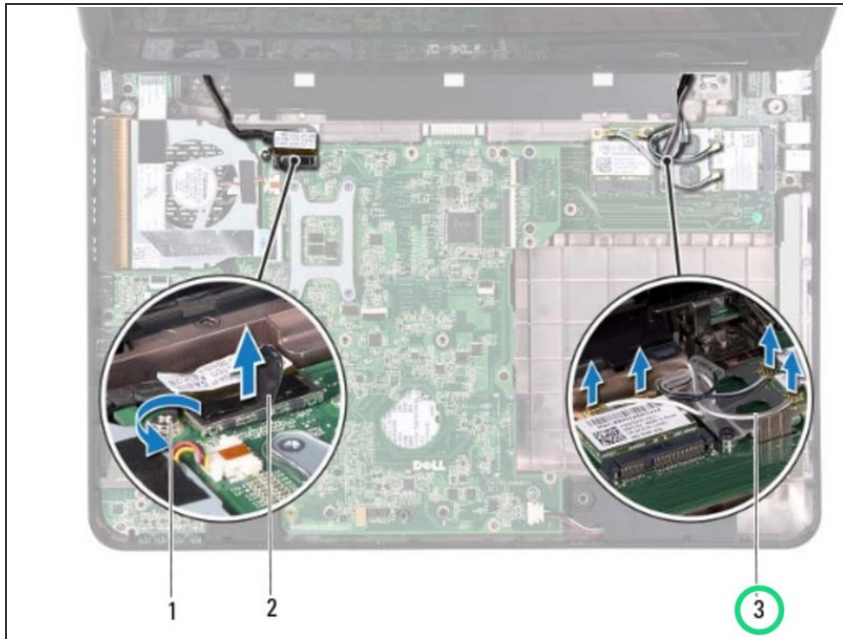
- Remove the two screws from the computer base.

## Step 2 — Loosen the Cable



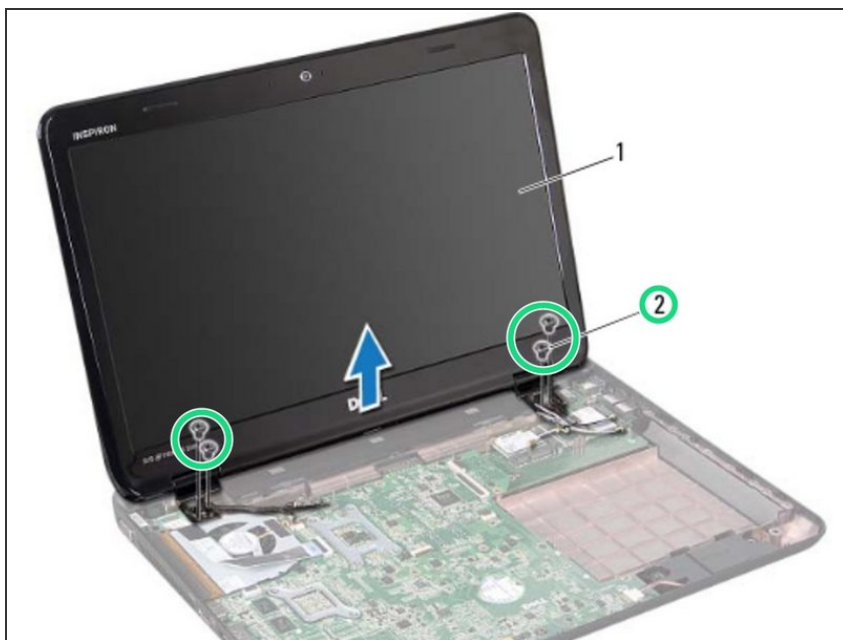
- Loosen the display cable grounding screw.

### Step 3 — Disconnect the Display Cable



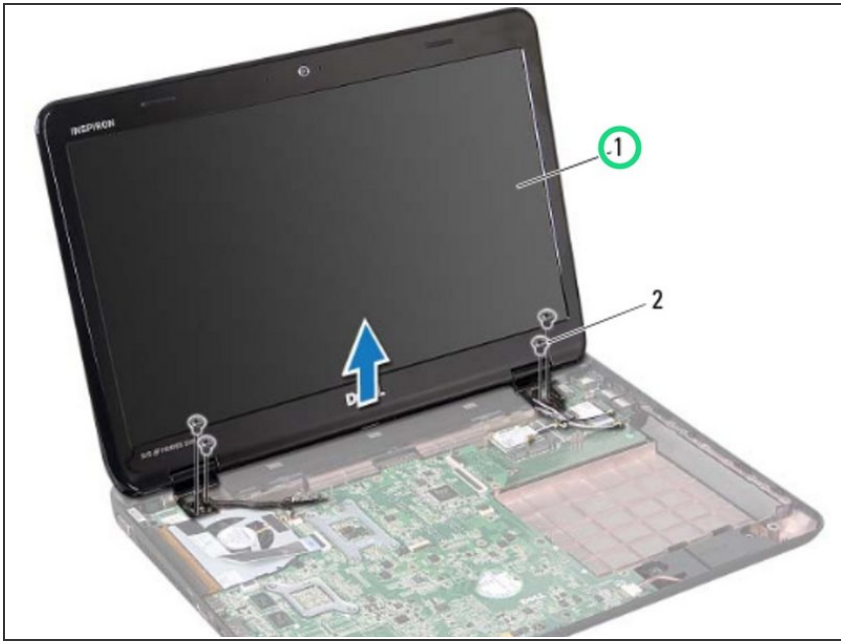
- Disconnect the display cable from the connector on the system board.

### Step 4 — Remove the Screws



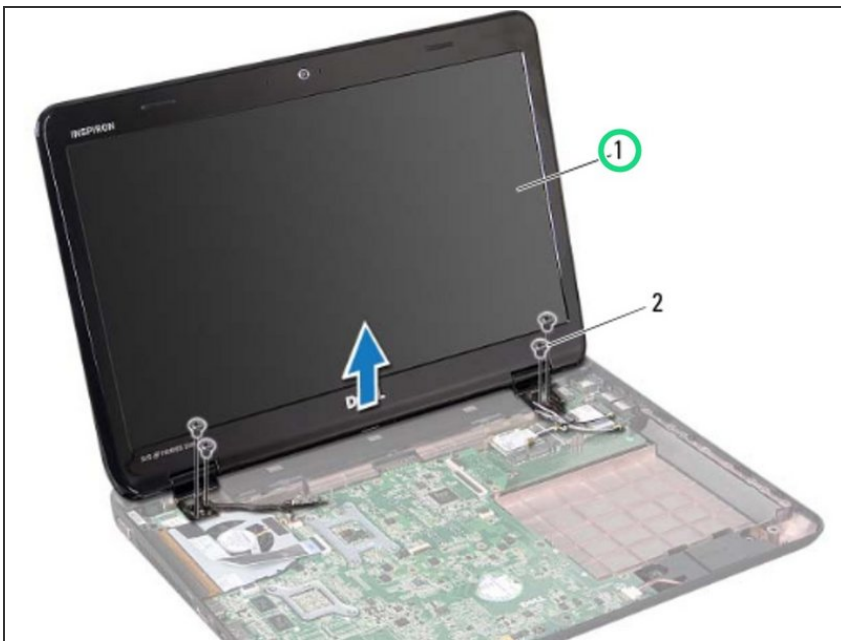
- Remove the four screws that secure the display assembly to the computer base.

## Step 5 — Lifting the Display Assembly



- Lift the display assembly off the computer base.

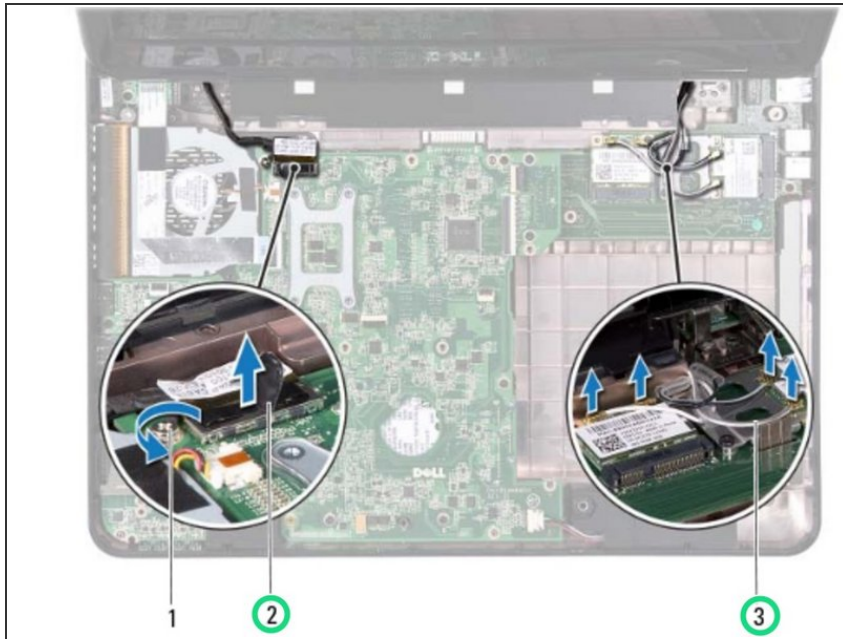
## Step 6 — Place the Display Assembly



- Place the **NEW** display assembly in position and replace the four screws that secure the display assembly to the computer base.

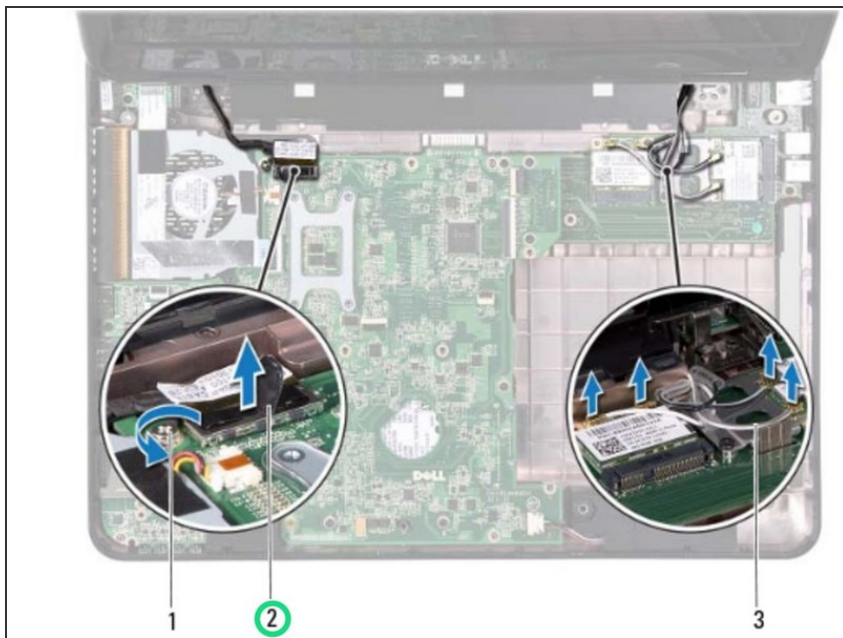


## Step 7 — Routing the Cable



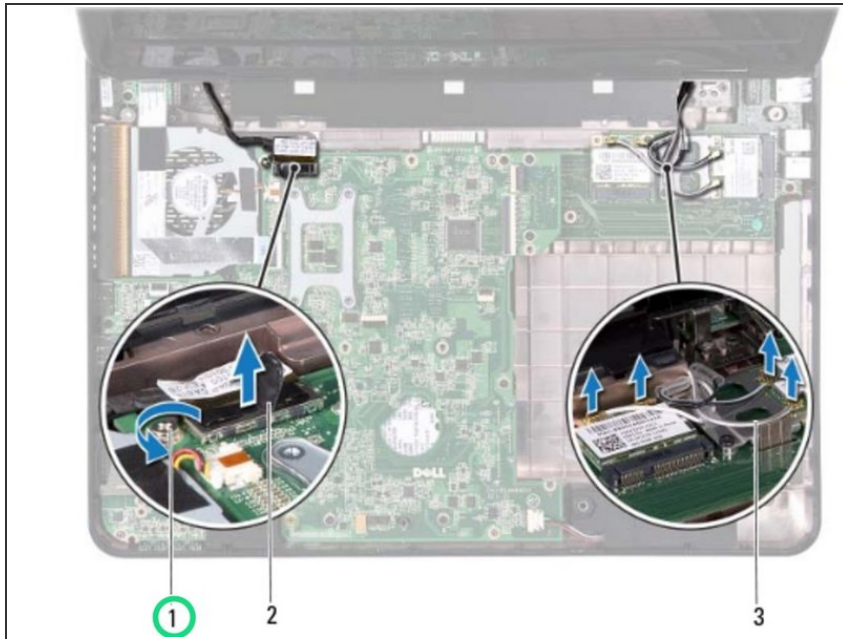
- Route the display cable and Mini-Card antenna cables through the routing guides.

## Step 8 — Connect the Display Cable



- Connect the display cable to the connector on the system board.

## Step 9 — Tighten the Grounding Screw



- Tighten the display cable grounding screw.

## Step 10 — Replace the Screws



- Replace the two screws at the bottom of the computer.