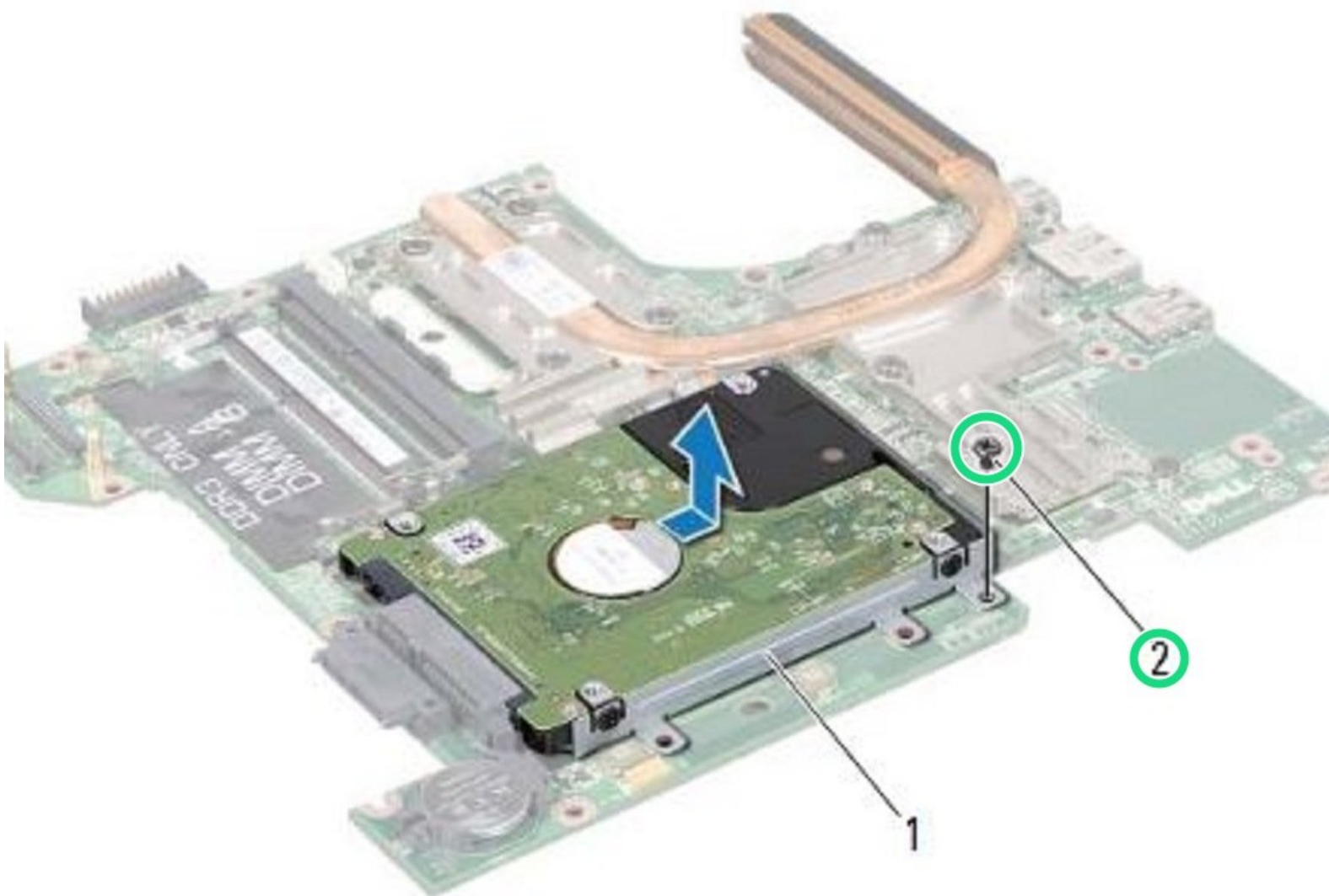




Dell Inspiron 14R Hard Drive Assembly Replacement

Written By: Terrence15



INTRODUCTION

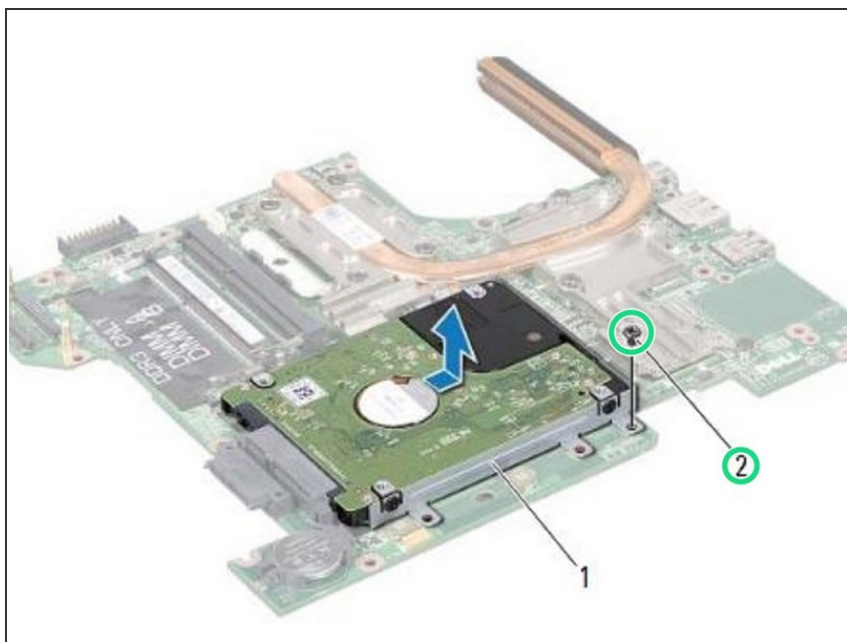
In this guide, we will be showing you how to remove and replace the Hard Drive Assembly.



TOOLS:

- [Phillips #0 Screwdriver](#) (1)
-

Step 1 — Remove the Screw



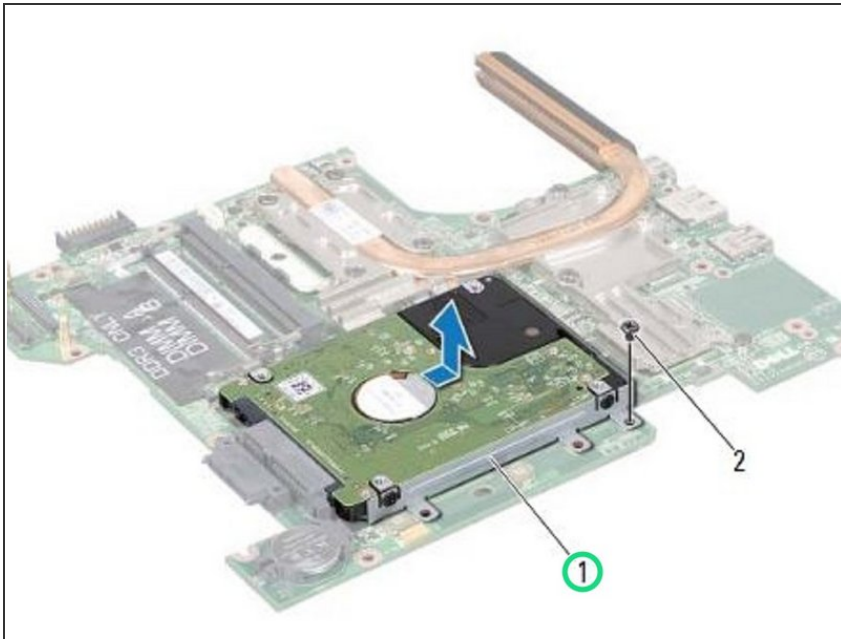
⚠ WARNING: Before working inside your computer, read the safety information that shipped with your computer. Follow the instructions in ["Before You Begin"](#).

⚠ CAUTION: To avoid electrostatic discharge, ground yourself by using a wrist grounding strap or by periodically touching an unpainted metal surface (such as a connector on your computer).

⚠ CAUTION: Hard drives are extremely fragile. Exercise care when handling the hard drive.

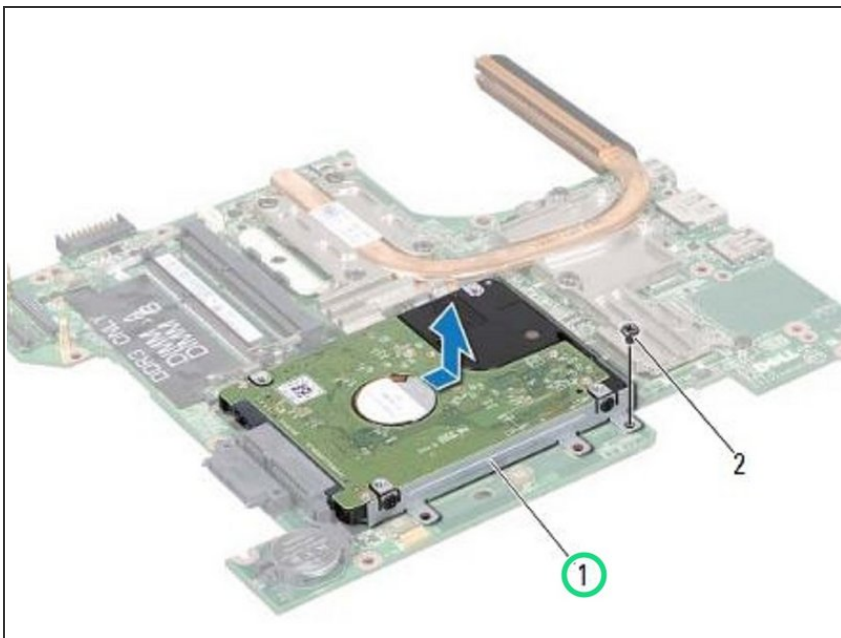
- Remove the screw that secures the hard-drive assembly to the system board.

Step 2 — Sliding the Hard-Drive Assembly



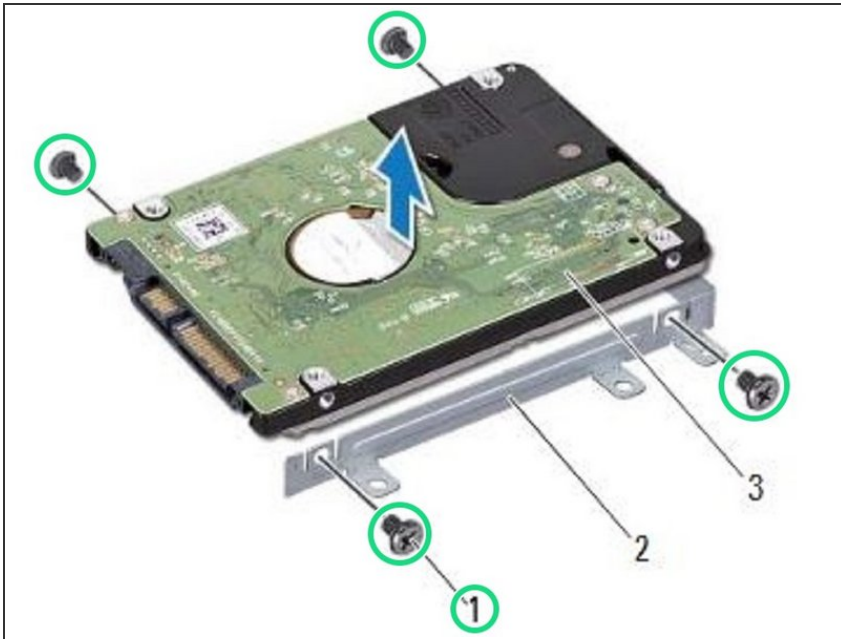
- Slide the hard-drive assembly in the direction shown in the illustration to disconnect it from the connector on the system board.

Step 3 — Lifting the Hard-Drive Assembly



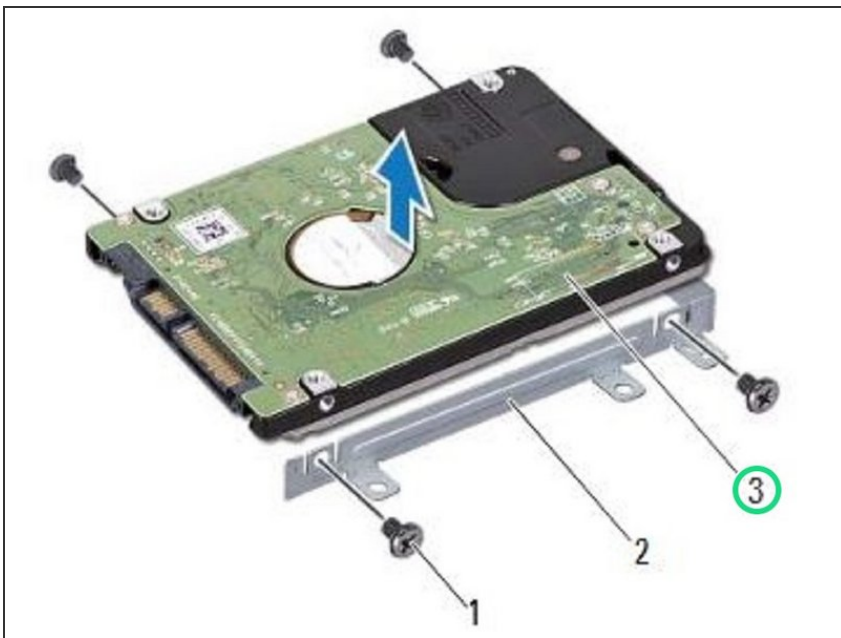
- Lift the hard-drive assembly off the system board.

Step 4 — Remove the Screws



- Remove the four screws that secure the hard-drive bracket to the hard drive.

Step 5 — Lifting the Hard Drive



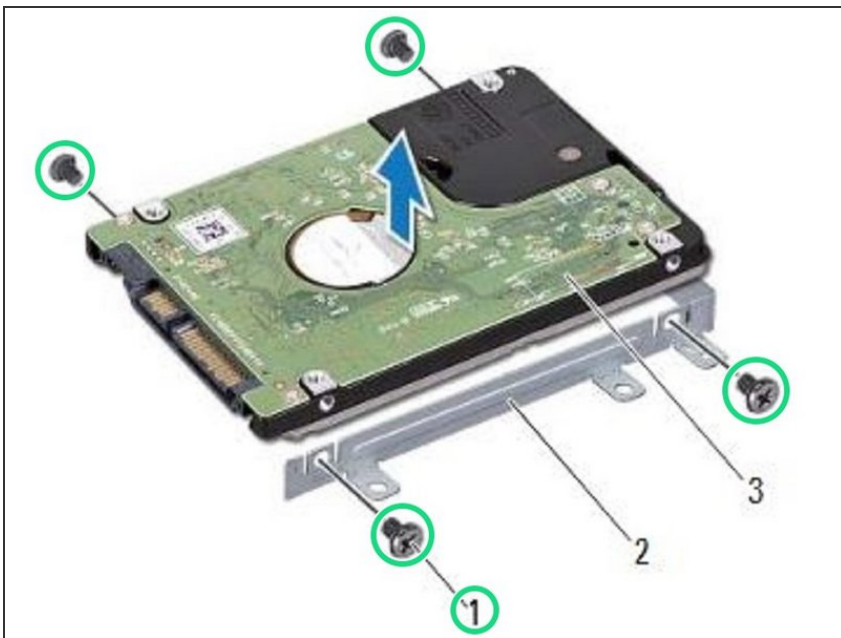
- Lift the hard drive away from the hard-drive bracket.

Step 6 — Placing the Hard Drive



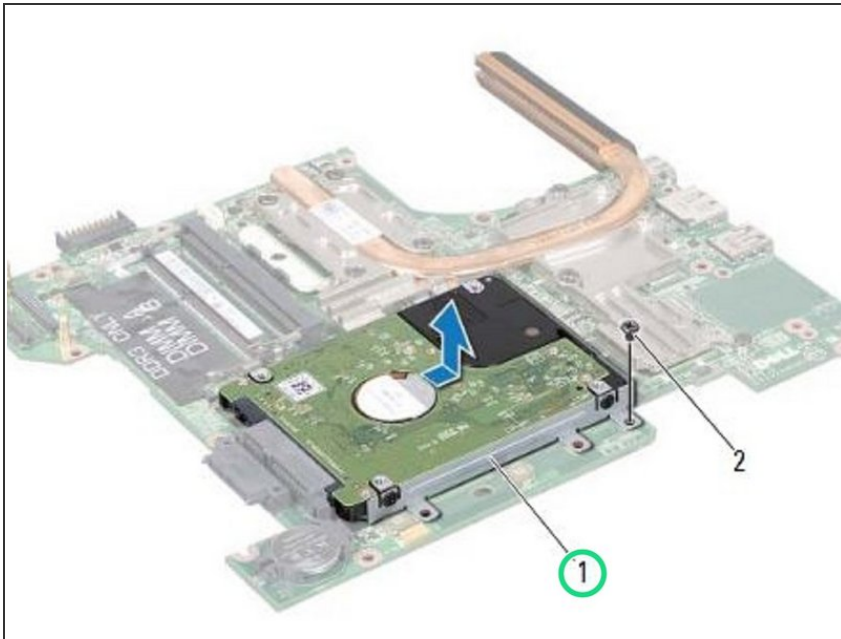
- Place the **NEW** hard drive in the hard-drive bracket.

Step 7 — Replace the Screws



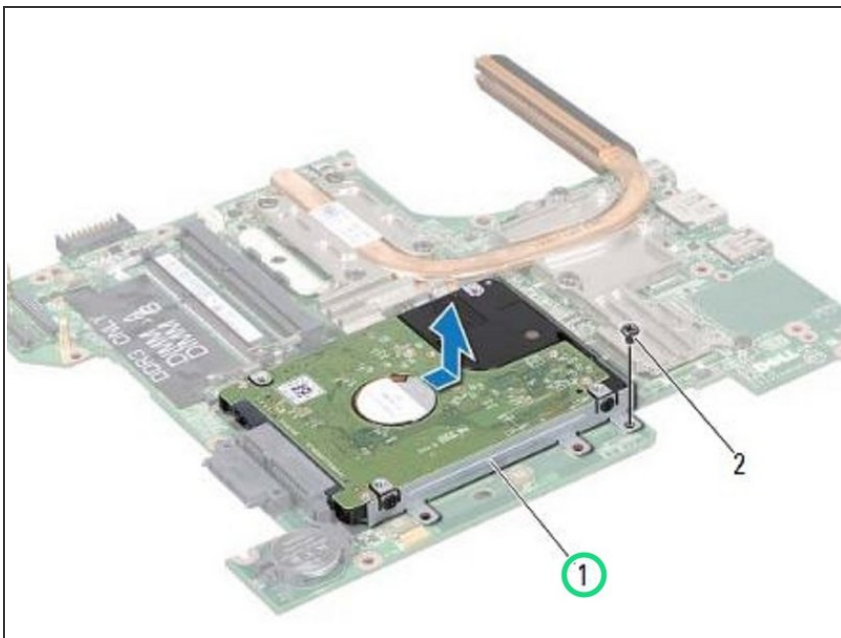
- Replace the four screws that secure the hard-drive bracket to the hard drive.

Step 8 — Placing the Hard-Drive Assembly



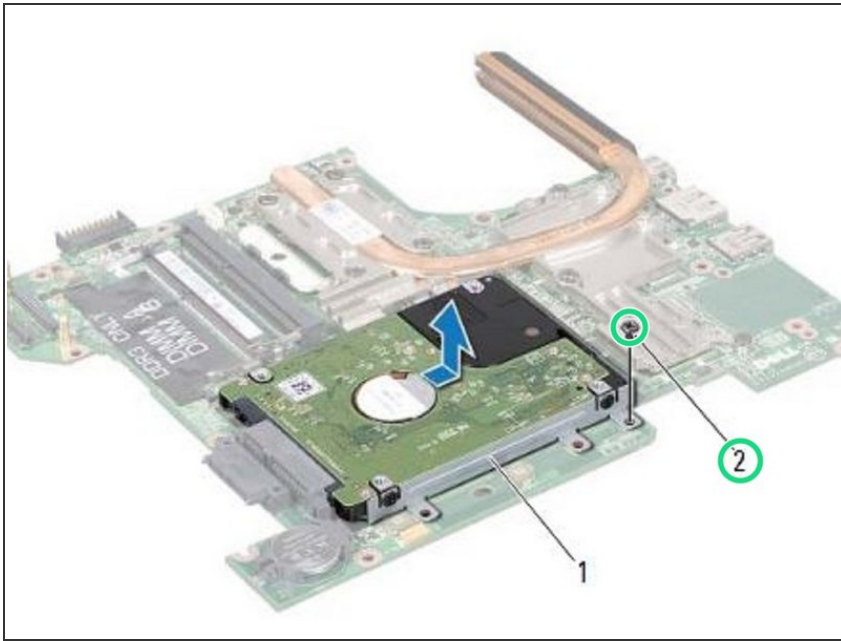
- Place the hard-drive assembly on the system board.

Step 9 — Sliding the Hard Drive Assembly



- Slide the hard-drive assembly to connect it to the connector on the system board.

Step 10 — Replace the Screw



- Replace the screw that secures the hard-drive assembly to the system board.

⚠ CAUTION: Before turning on the computer, replace all screws and ensure that no stray screws remain inside the computer. Failure to do so may result in damage to the computer.