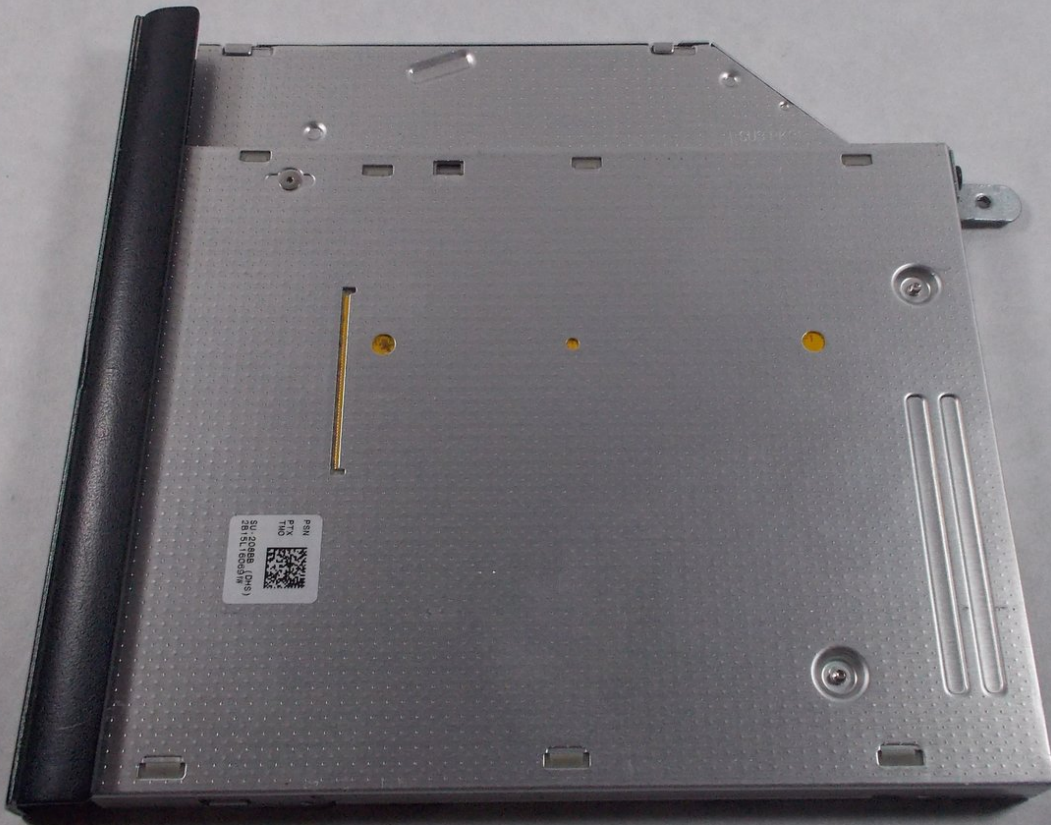




Dell Inspiron 14R-5421 CD Drive Replacement

replace the cd drive

Written By: Jared paiva



INTRODUCTION

this guide will show you how to replace the cd drive



TOOLS:

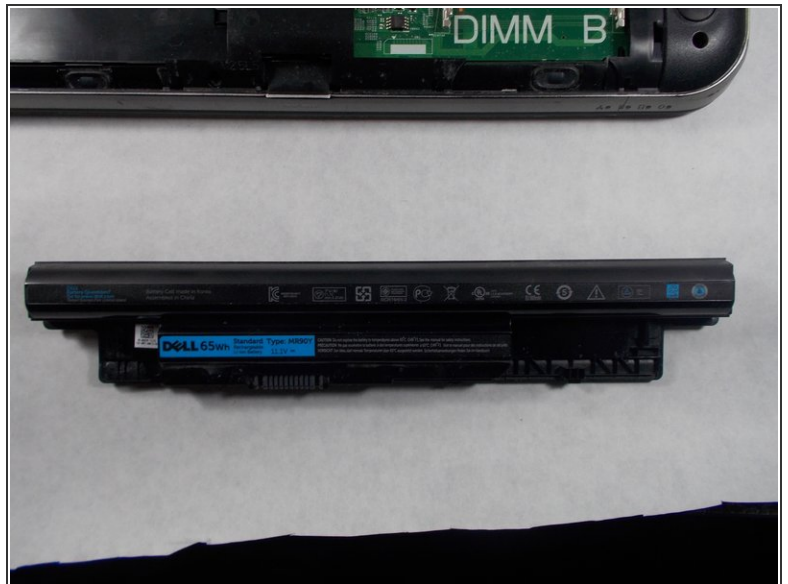
- [Phillips #00 Screwdriver](#) (1)
-

Step 1 — Battery



- Push the two sliders away from the battery towards the outer edges.

Step 2



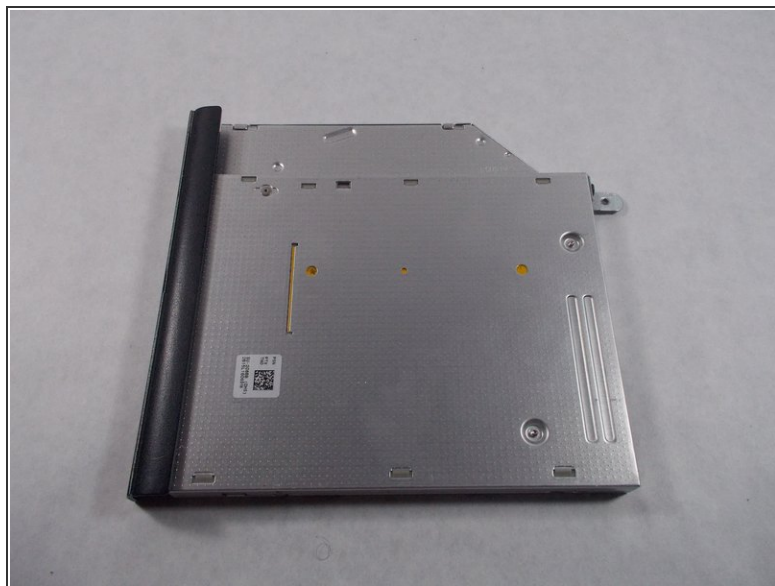
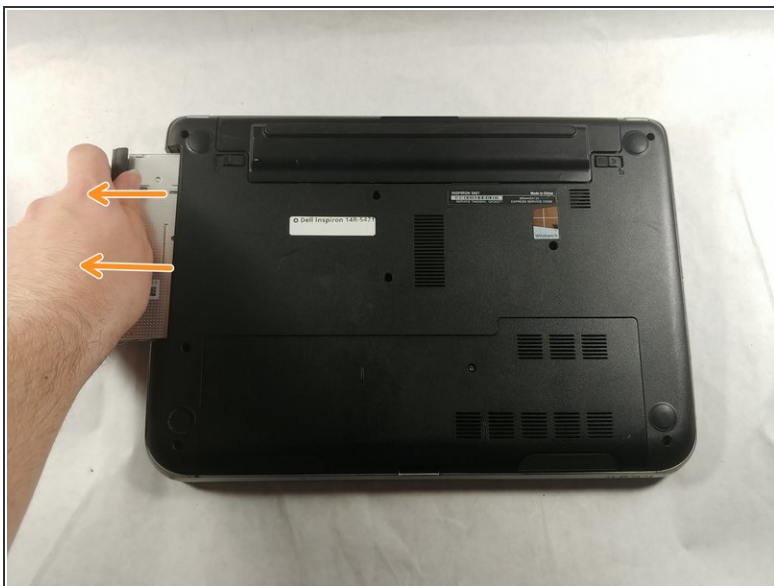
- Remove the battery when it pops up.

Step 3 — CD Drive



- Remove the single screw that secures the cd drive to the laptop noted by the red circle

Step 4



- Now just pull the cd drive until it disconnects from the computer

To reassemble your device, follow these instructions in reverse order.