



Dell Inspiron 14z 1470 Display Assembly Replacement

Written By: Terrence15



INTRODUCTION

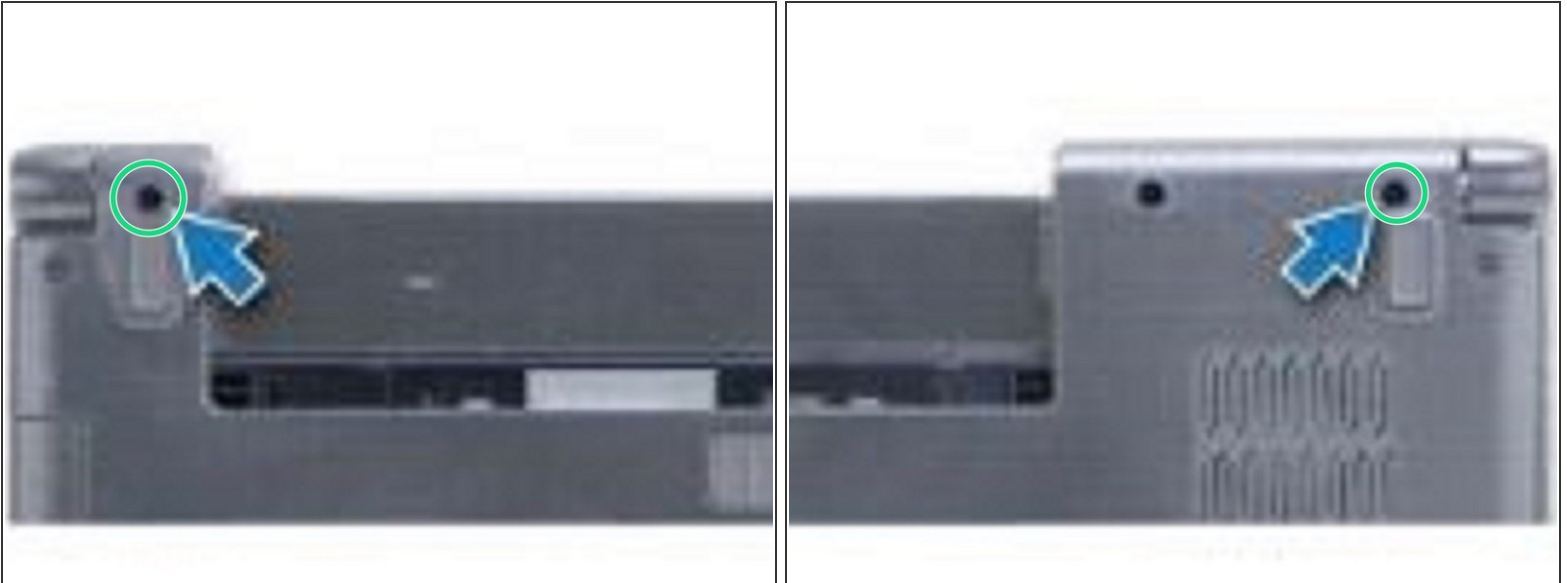
In this guide, we will be showing you how to remove and replace the Display Assembly.






TOOLS:

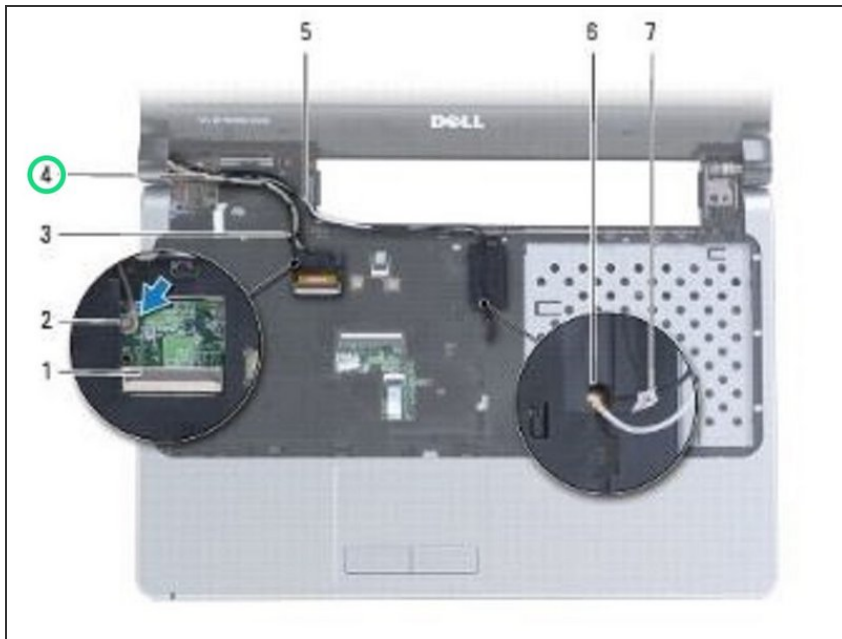
- [Phillips #0 Screwdriver](#) (1)
-

Step 1 — Remove the Screws



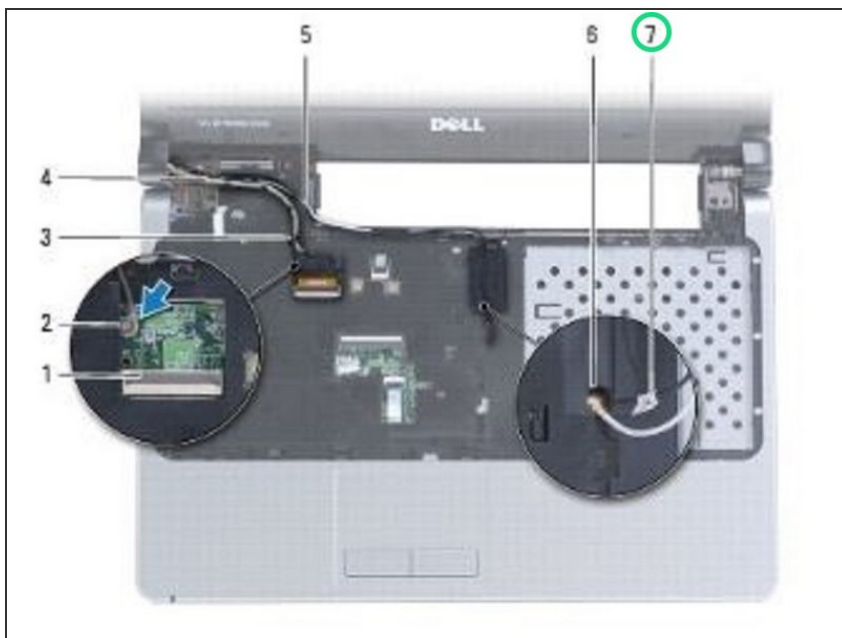
-  **WARNING:** Before working inside your computer, read the safety information that shipped with your computer. Follow the procedures in [Before You Begin](#).
-  **CAUTION:** To avoid electrostatic discharge, ground yourself by using a wrist grounding strap or by periodically touching an unpainted metal surface.
-  Remove the two screws on the base of the computer that secure the display assembly to the computer base.

Step 2 — Disconnecting the Display Cable



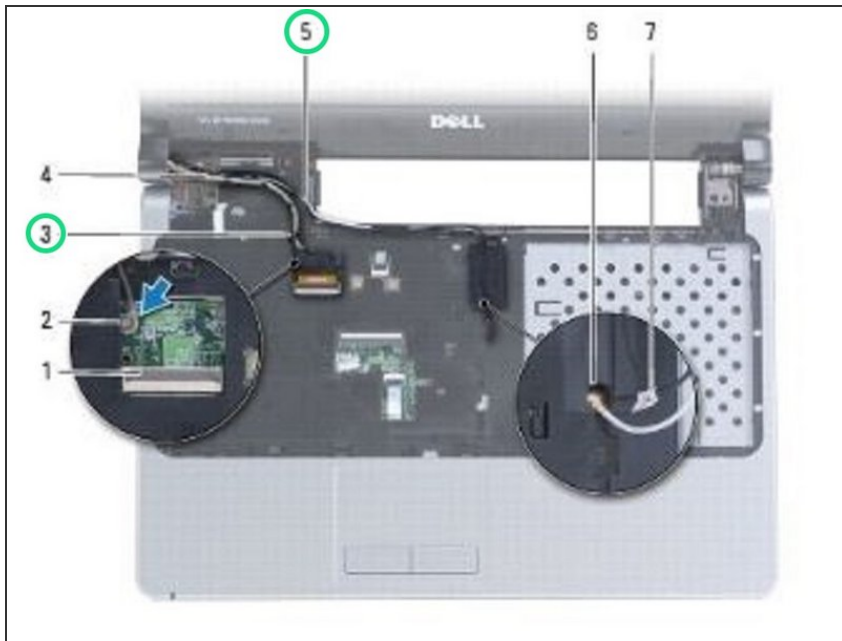
- Disconnect the display cable and remove the screw from the system board.

Step 3 — Pull the Antenna Cables



- Pull the Mini-Card antenna cables up through the slot in the computer base.

Step 4 — Note the Routing



- Note the routing of all the cables and remove them from their routing guides.

Step 5 — Removing the Display



- Hold the display while you remove the three screws that secure the display assembly to the computer base.

Step 6 — Removing the Display Assembly



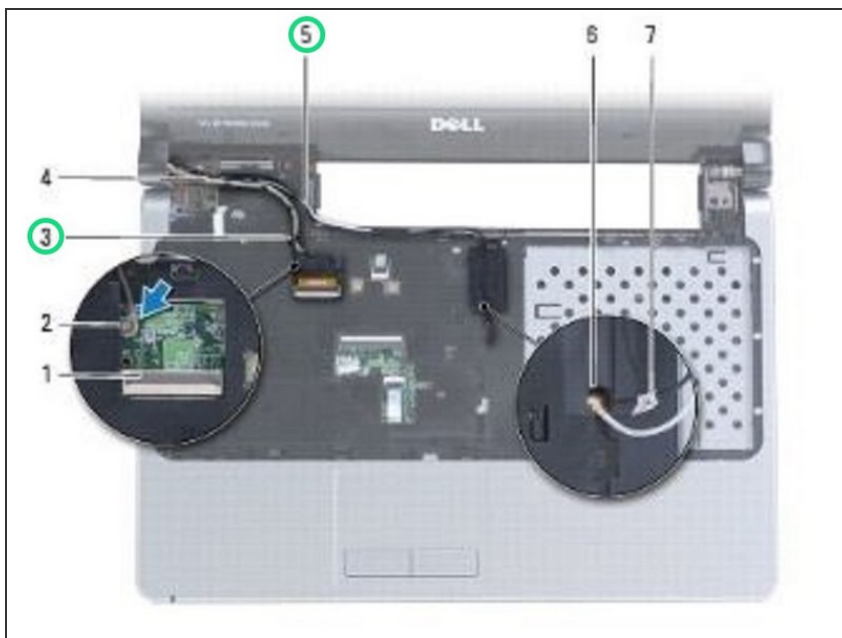
- Lift and remove the display assembly from the computer base.

Step 7 — Place the Display Assembly



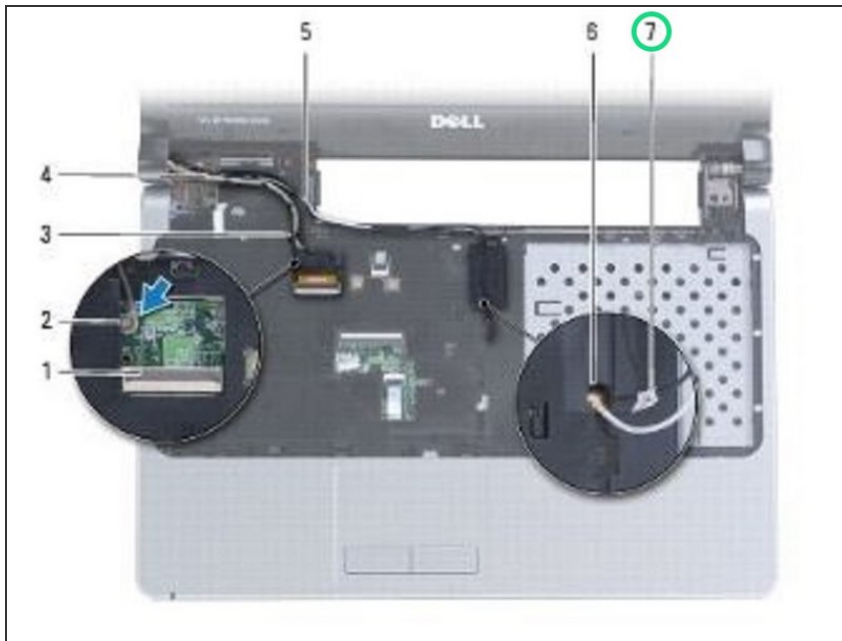
- Using the alignment posts, place the **NEW** display assembly in position and replace the three screws that secure the display assembly to the computer base.

Step 8 — Routing the Antenna Cables



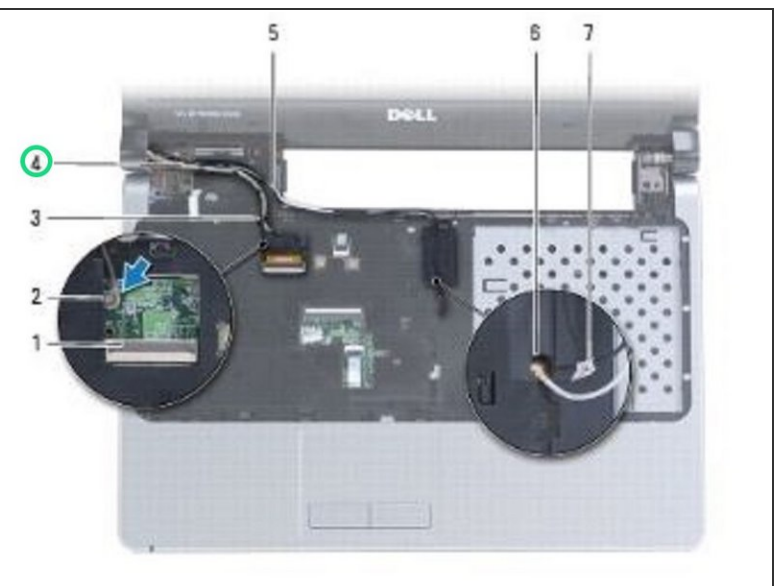
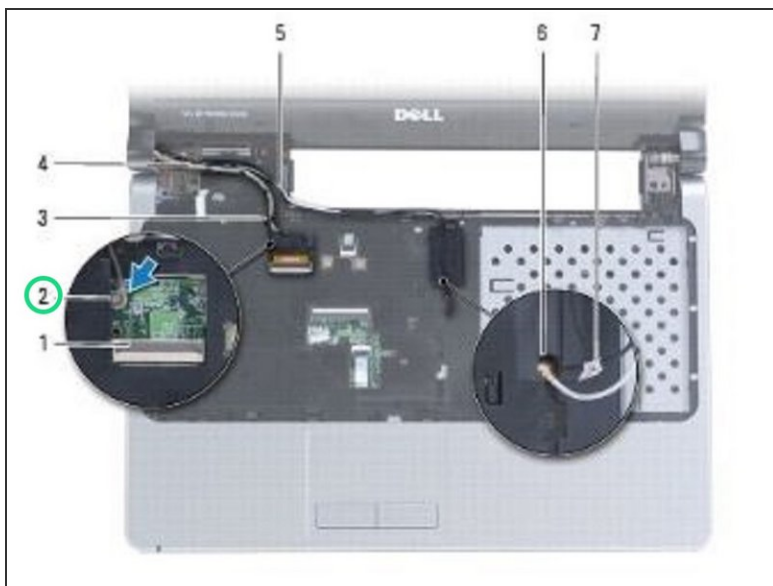
- Route the Mini-Card antenna cables and display cable through their routing guides.

Step 9 — Route the Antenna Cables



- Route the antenna cables through the slot in the computer base.

Step 10 — Replace the Screw



- Replace the screw and connect the display cable.