



Dell Inspiron 14z N114z Memory/RAM Replacement

This guide will take you through the process of removing and replacing the Dell Inspiron's memory/RAM.

Written By: Duggan Young



This document was generated on 2019-09-28 09:30:28 AM (MST).

INTRODUCTION

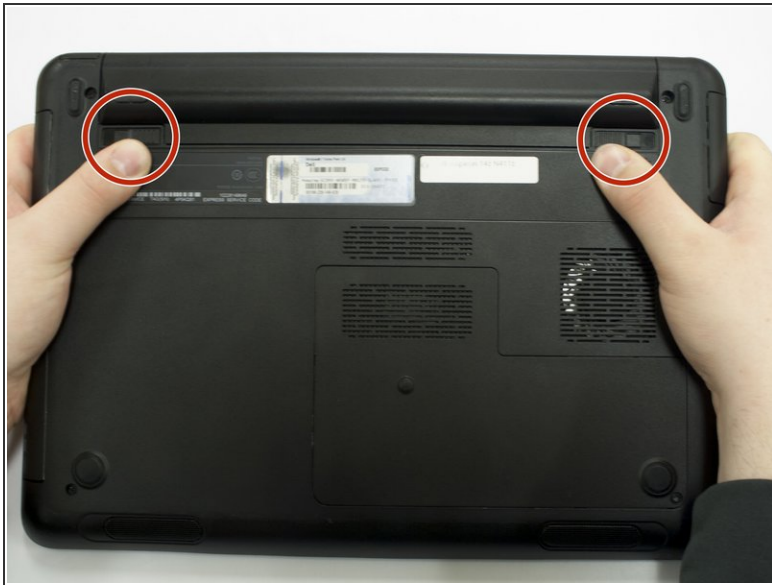
Replacing your Dell Inspiron's (14z N114z) memory/RAM can potentially speed your computer up and help it to accomplish multiple tasks at a time. This guide will NOT include the entire process of the prerequisite guide, as accessing the RAM will require tearing down front half of the laptop.



TOOLS:

- [IFIXIT screwdriver with a PH0 bit](#) (1)
 - [iFixit Opening Tools](#) (1)
-

Step 1 — Battery



- Using your thumbs, push out on both side tabs simultaneously. You should hear a soft click and see the battery slightly pop out.
- Grab and lift the battery off from the underside of the laptop.

Step 2 — Memory/RAM



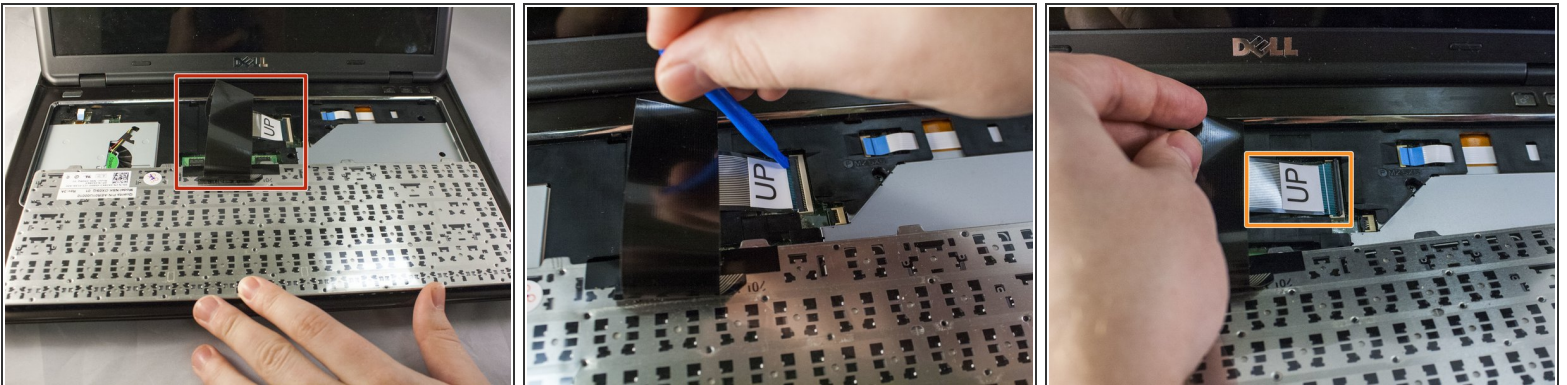
- Unscrew one 6.75mm screw on the bottom of the access panel using a PH0 bit.
- Pry up on the bottom edge of the access panel to remove.
- Locate RAM in the upper left portion of the access panel. Using both thumbs, push out on the small locking arms, located on each side of the RAM. If done correctly, RAM will pop up to an accessible angle.
- Carefully pull RAM out of the slot.

Step 3



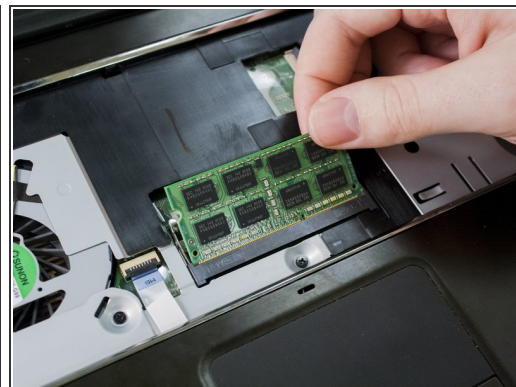
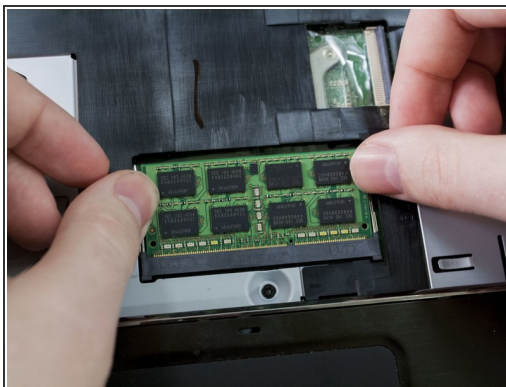
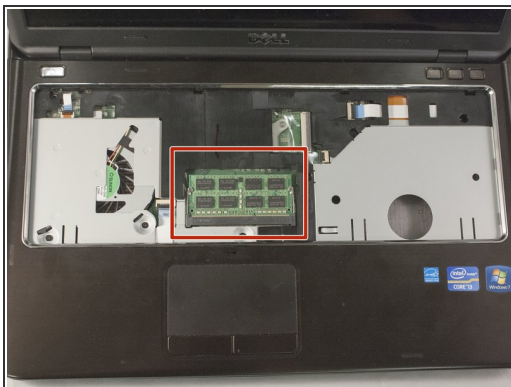
- Carefully flip laptop right side up and open to view the keyboard.
- Using a plastic opening tool, pry up on the four tabs holding the keyboard in place. Be careful not to damage the keys on the top of the keyboard. You will know when it has been successfully pried open when you hear four clicks from the top of keyboard.
- Gently lift the keyboard out from the rest of the laptop. Do not attempt to pull away or damage of the keyboard cable could occur.

Step 4



- Gently flip keyboard over without damaging the ribbon cable.
- Carefully disconnect the ribbon cable by flipping up the tab holding the cable in place by using a plastic opening tool. Set keyboard and ribbon cable aside.

Step 5



- Locate the RAM slot in the center of where the keyboard was just removed.
- Using both thumbs, push out on the small locking arms, located on each side of the RAM. If done correctly, RAM will pop up to an accessible angle.
- Carefully pull RAM out of the slot.

To reassemble your device, follow these instructions in reverse order.