



# Dell Inspiron 14z N114z Display Assembly Replacement

Written By: Terrence15



---

## INTRODUCTION

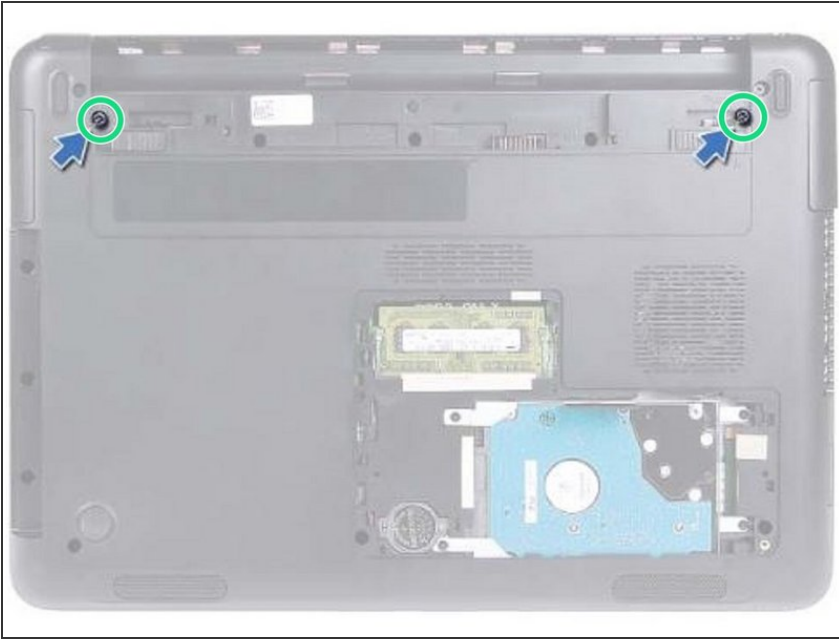
In this guide, we will be showing you how to remove and replace the Display Assembly.



### TOOLS:

- [Phillips #0 Screwdriver](#) (1)
-

## Step 1 — Remove the Screws

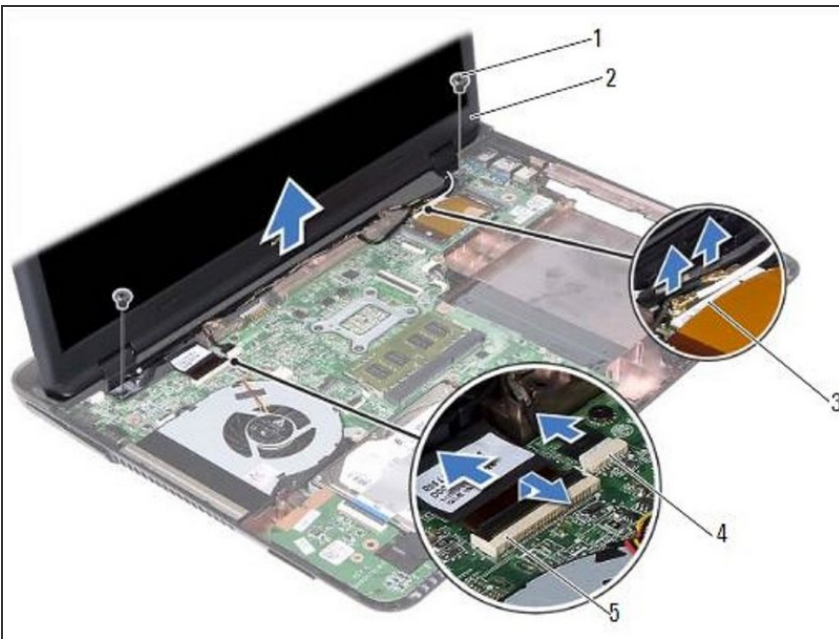


**WARNING:** Before working inside your computer, read the safety information that shipped with your computer. Follow the instructions in ["Before You Begin"](#).

**CAUTION:** To avoid electrostatic discharge, ground yourself by using a wrist grounding strap or by periodically touching an unpainted metal surface (such as a connector on your computer).

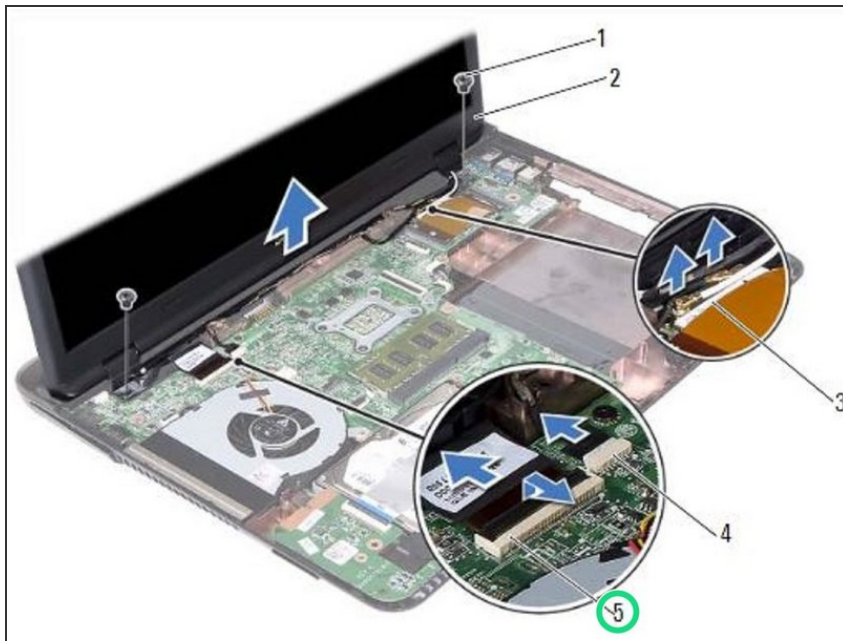
- Remove the two screws that secure the display assembly to the computer base.

## Step 2 — Turn over the Computer



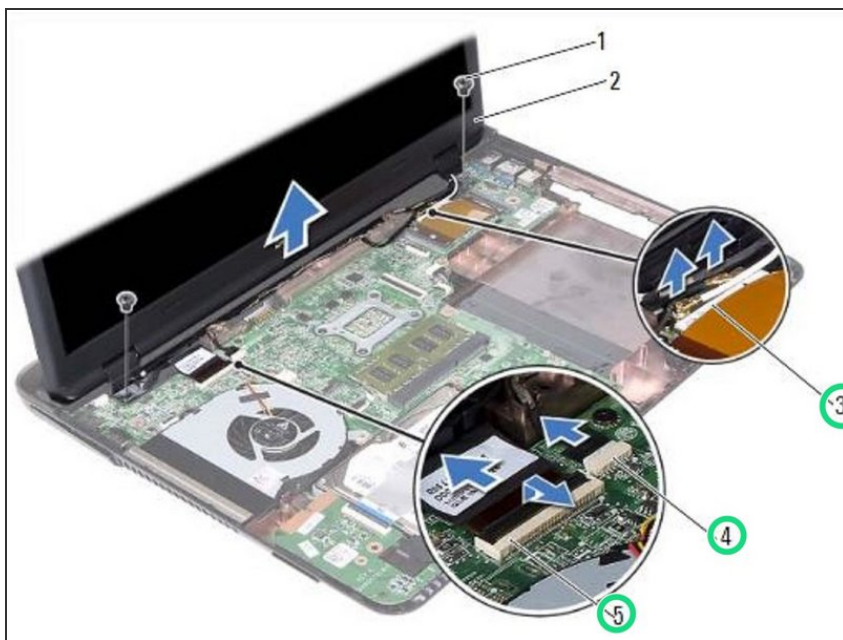
- Turn the computer over and open the display as far as possible.

### Step 3 — Lifting the Connector Latch



- Lift the connector latch and disconnect the display cable from the connector on the system board.

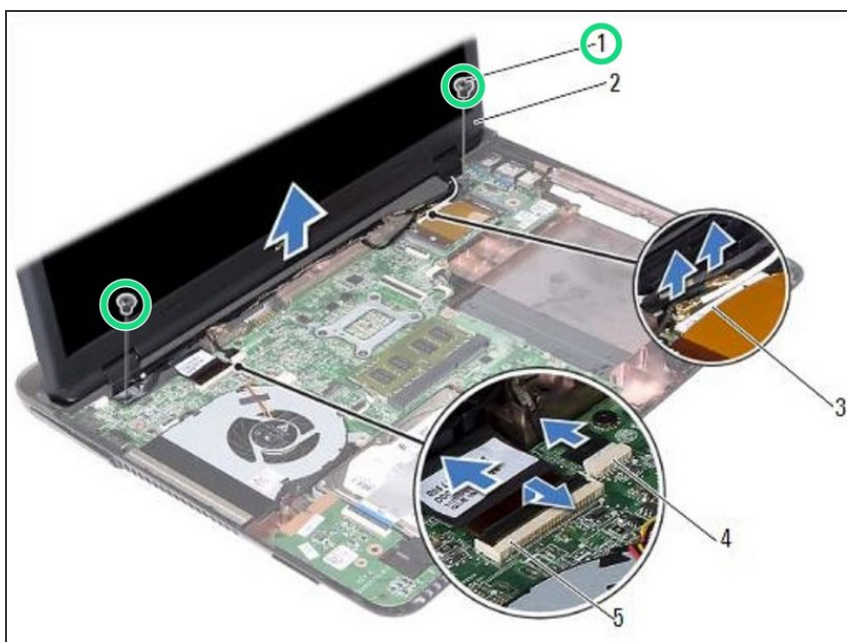
### Step 4 — Note the Routing



- Note the routing of the display, camera, and mini-card antenna cables, and remove the cables from their routing guides.

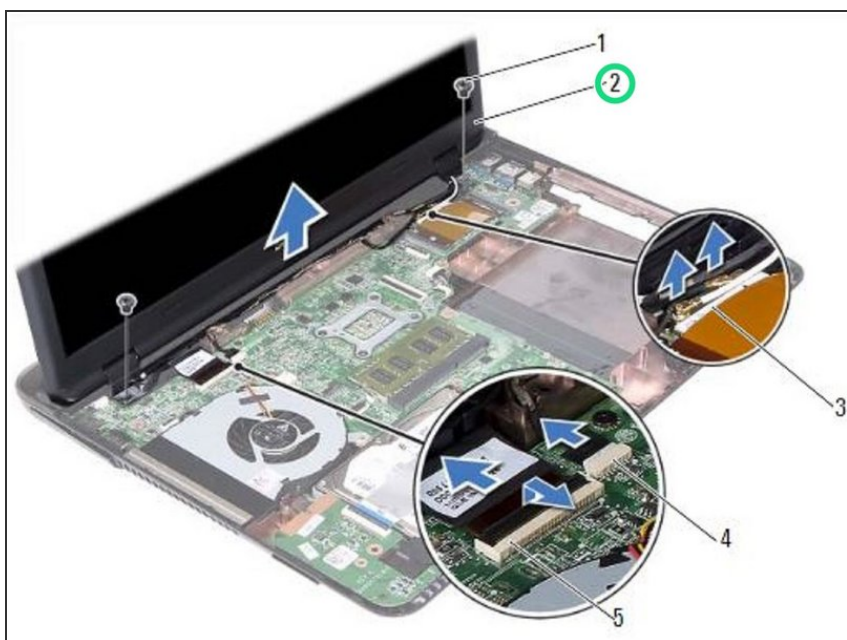


## Step 5 — Remove the Screws



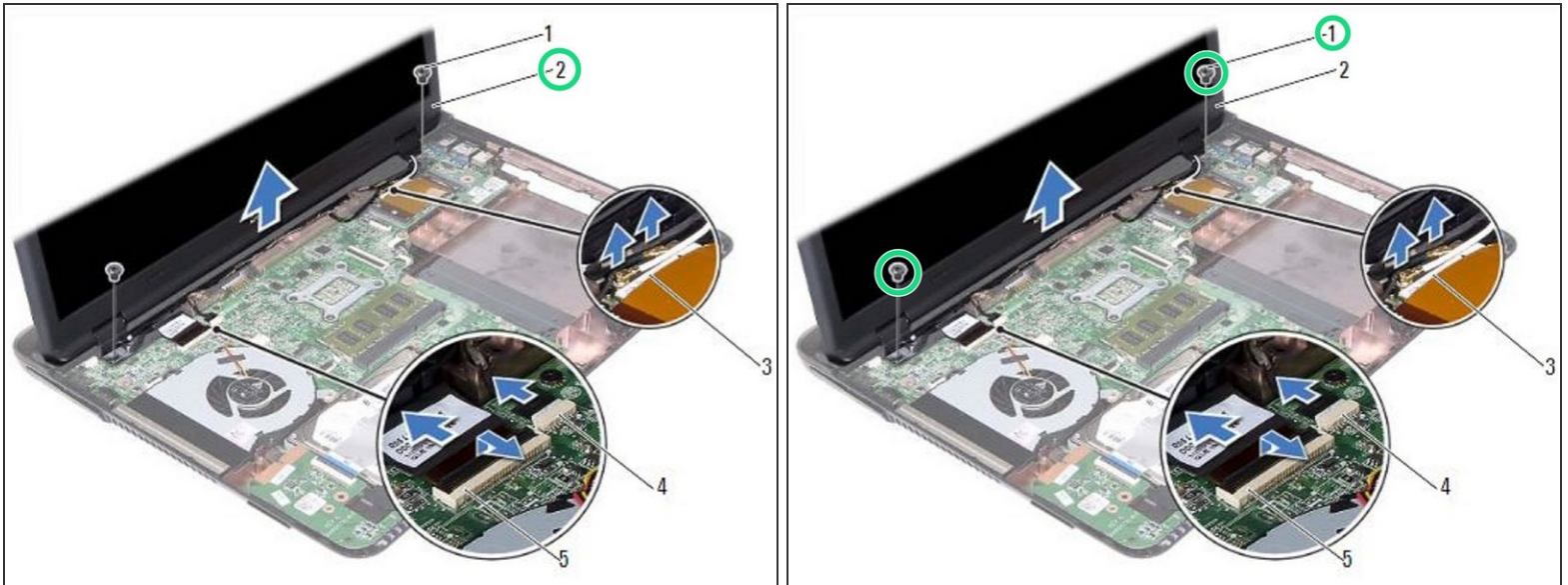
- Remove the two screws that secure the display assembly to the computer base.

## Step 6 — Lifting the Display Assembly



- Lift the display assembly off the computer base.

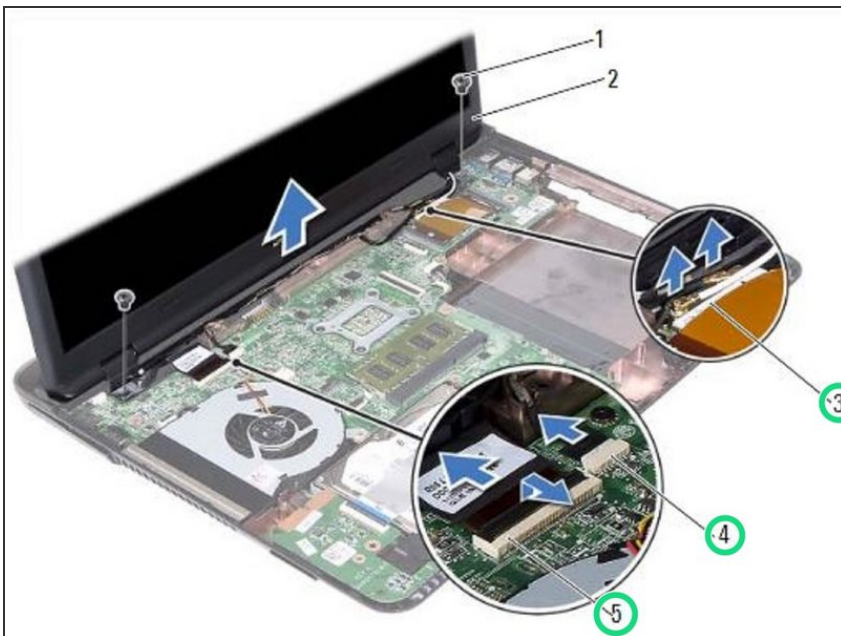
## Step 7 — Placing the Display Assembly



- Place the **NEW** display assembly in position and replace the two screws that secure the display assembly to the computer base.

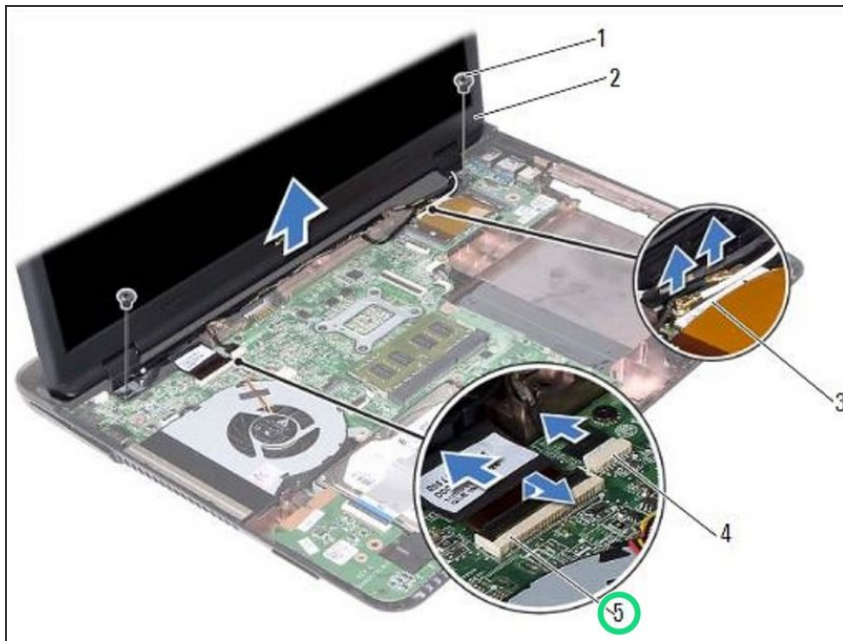
**i** NOTE: Ensure that no cables are caught between the display assembly and the computer base.

## Step 8 — Route the Cables



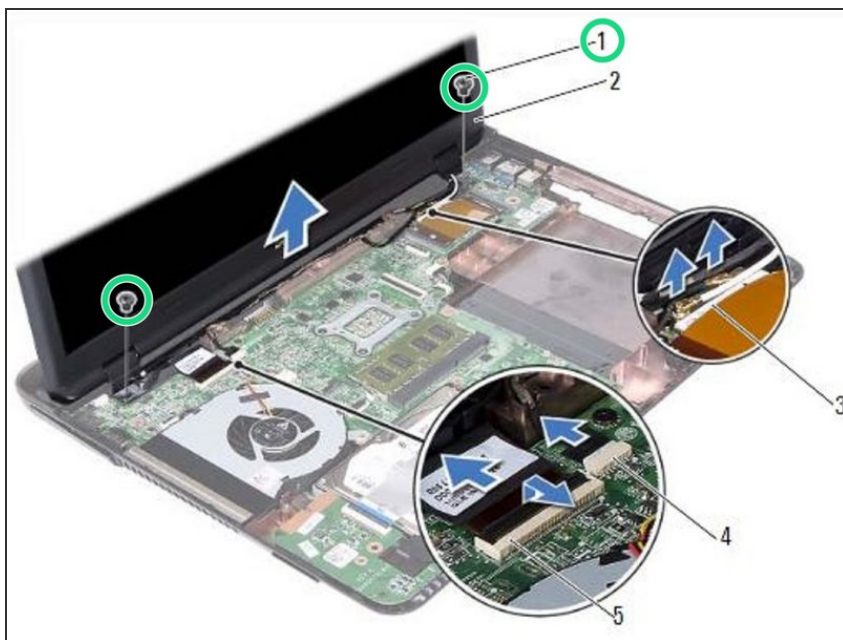
- Route the display, camera, and mini-card antenna cables through their routing guides.

## Step 9 — Sliding the Display Cable



- Slide the display cable in the connector on the system board and press down the latch to secure the cable.

## Step 10 — Replace the Screws



- Turn the computer over.
- Replace the two screws that secure the display assembly to the computer base.