



Dell Inspiron 14z N114z Hard Drive Assembly Replacement

Written By: Terrence15



INTRODUCTION

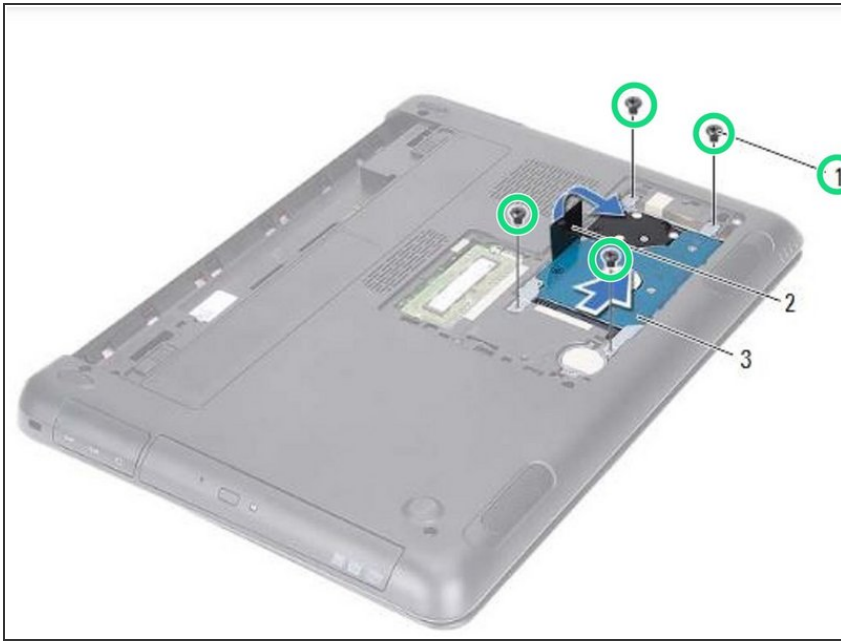
In this guide, we will be showing you how to remove and replace the Hard Drive Assembly.




TOOLS:

- [Phillips #0 Screwdriver](#) (1)
-

Step 1 — Remove the Screws



 Follow the instructions in ["Before You Begin"](#).

- Remove the four screws that secure the hard-drive assembly to the computer base.

Step 2 — Sliding the Hard Drive



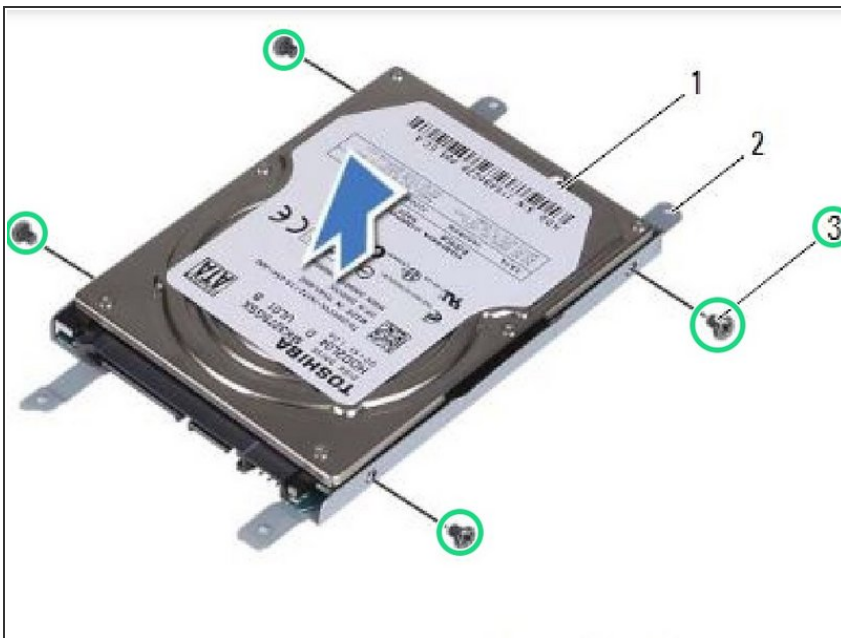
- Using the pull-tab, slide the hard-drive assembly to disconnect it from the connector on the system board.

Step 3 — Lifting the Hard-Drive Assembly



- Lift the hard-drive assembly off the computer base.

Step 4 — Remove the Screws



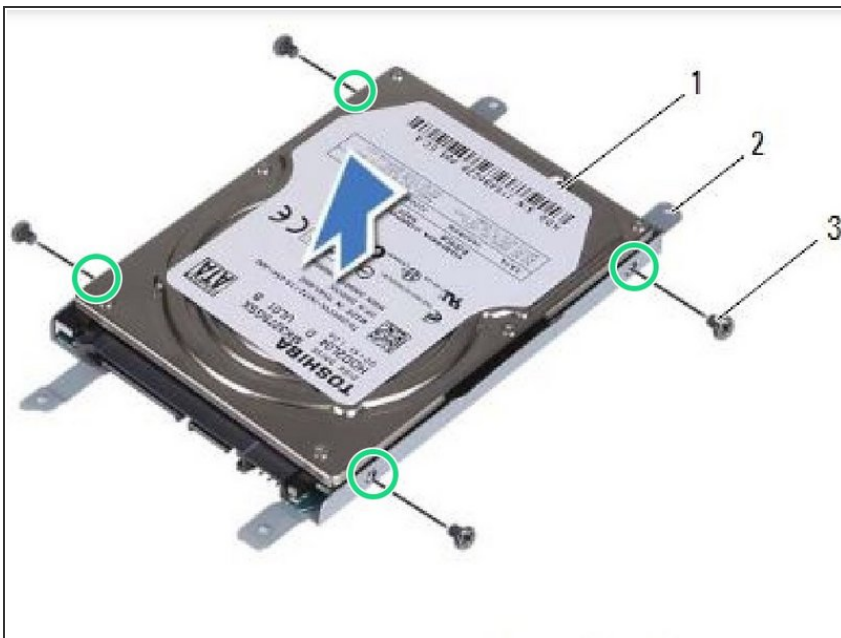
- Remove the four screws that secure the hard-drive bracket to the hard drive.

Step 5 — Lifting the Hard Drive



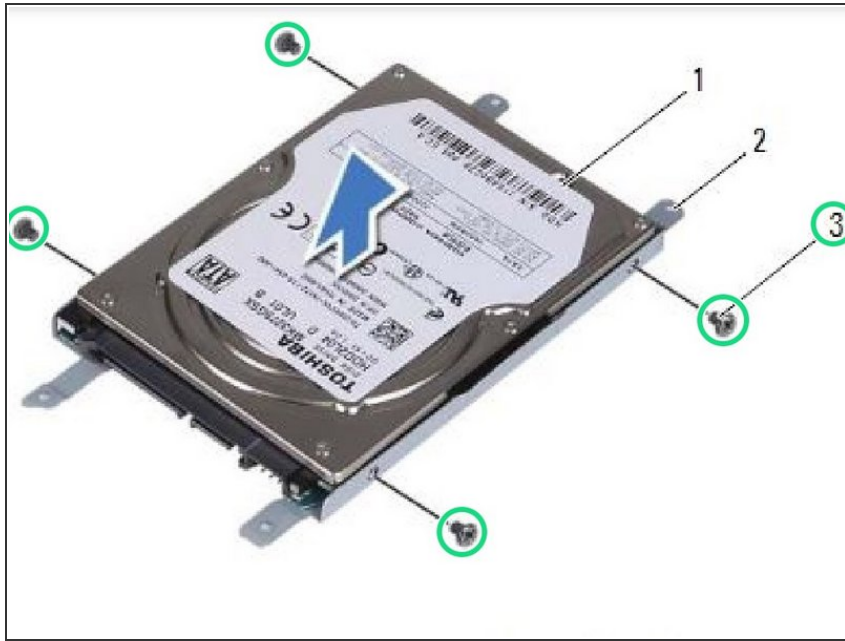
- Lift the hard drive away from the hard-drive bracket.

Step 6 — Align the Screw Holes



- Align the screw holes on the hard-drive bracket with the screw holes on the hard drive.

Step 7 — Replace the Screws



- Replace the four screws that secure the hard-drive bracket to the hard drive.

Step 8 — Placing the Hard-Drive Assembly



- Place the hard-drive assembly in the computer base.

Step 9 — Sliding the Hard Drive Assembly



- Using the pull-tab, slide the hard-drive assembly into the connector on the system board.

Step 10 — Replace the Screws



- Replace the four screws that secure the hard-drive assembly to the computer base.